

Mini Track Loaders / Small Articulated Loaders / Mini Excavators  
Compact Wheel Loaders / Compact Track Loaders / Skid Steer Loaders

---



# SMALL MACHINES AND TACTICS LINEUP



**NO ONE WILL OUTWORK US.™**

**CASE**  
CONSTRUCTION



# CONSTRUCTION-GRADE SMALL MACHINES

FOR PEOPLE WHO WANT TO  
**BUILD A BUSINESS.**







These machines are for anyone who needs to do big things in small spaces and wants to upsize the amount of work they can get done with a pick-up truck and a trailer. CASE mini track loaders, small articulated loaders, mini excavators, compact track loaders and skid steer loaders offer the big-time features and big-time attachments needed to knock down any landscaping, nursery, backyard and tree service jobs that come your way—and growing the size of your business along the way. Then, swap attachments and sweep, plane, auger and hammer anything else on your list.



## HEAVY-DUTY ATTACHMENTS

# THERE'S AN ATTACHMENT FOR THAT.







If there's a job that needs doing, these machines give you the attachment you need to do it. So, you can be a jack of all trades and a master of them all, too. This is big-time, heavy-duty equipment with an optional multi-function control connector that lets you tackle everything from loading, tilling, digging, sweeping, grappling, stump grinding and snow blowing to fine grading. And, when you step up to a bigger machine in the future, most of these attachments will step up right along with you. That's an example of the advantages of going with machines that are construction-grade.



## MINI TRACK LOADER

---

# THE WORKHORSE THAT TRAILERS LIKE A PONY.

Whether you're looking to load, lift, dig, doze, auger, sweep, snow blow, snow push, rake, grind or plane, this versatile hard worker gives you the capability to get the job done fast and easy. It's easy to operate, goes anywhere and lets you fit in tight spaces. Rated lifting capacity (calculated at 35%) is 1,000 lb. There are more than 40 different attachments available and an optional 14-pin connector which lets you plug into the big-time attachments. The pilot joystick control makes it easy to operate. And it's all backed by CASE, so everything about it is heavy duty. Including our commitment to helping you grow your business.









## EXPLORE THE FEATURES

# GET IN. GET OUT. GET PAID.



The TL100 mini track loader gives you the construction-grade features you need to work easier, faster and more profitably on all kinds of projects.

### **FUEL-EFFICIENT POWER.**

A quiet, smooth, efficient, powerful Tier 4 Final engine minimizes cost of ownership and maximizes uptime with no DEF and no regeneration needed.

### **COMPACT TRACK DESIGN.**

You get maximum traction on concrete, blacktop, grass, mud and snow. The narrow 7-inch track option allows easy access to narrow entryways, and fits through 36-inch doors or gates. The wider 10-inch option makes the machine 40 inches wide, decreasing ground pressure and maximizing stability.

### **VERSATILITY.**

With 40+ attachment options, the mini track loader has an industry-standard CII interface. You can run soil conditioners, tillers, grapples, grapple buckets, trenchers, mowers, augers and much more. It's designed for simple or complex attachments with standard industry hydraulics and optional 14-pin electrical and CASE drain connectors.





### PREMIUM PRODUCTIVITY FEATURES.

ISO pilot joystick control, thumbwheel auxiliary hydraulics and advanced instrumentation create an ergonomic, easy-to-use machine for improved efficiency. Clear sightlines to tracks and bucket cutting edge enhance productivity.

### LIFTING PERFORMANCE.

A radial linkage loader arm improves digging performance and decreases required maintenance. A hinge pin height of 86.7 inches allows for high clearance over many dumpsters and dump trailers.

## TL100 SPECIFICATIONS

### DRIVETRAIN

Engine	D1305-E4B
Displacement/ Cylinders	77.0 in <sup>3</sup> (1.261 L)
Emissions Certification* Solutions	Stage V
Gross Horsepower	24.8 hp (18.5 kW)
Net Horsepower	24 hp (18.0 kW)
Peak Torque	59.1 lb·ft (80.1 Nm)
Fuel Tank (Diesel)	7.9 gal (30 L)
Max Travel Speed	4.7 mph (7.5 kph)
Narrow Track (ROC) 35%	992 (450 kg)
Narrow Track (ROC) 50%	1,416 (643 kg)
Narrow Track Tipping Load*	2,833 lb (1 285 kg)
Wide Track (ROC) 35%	1,102 lb (500 kg)
Wide Track (ROC) 50%	1,574 lb (714 kg)
Wide Track Tipping Load*	3,148 lb (1 428 kg)
Lift Configuration	Radial
Standard Auxiliary Hydraulics	13.2 gpm (50 L/min)
Narrow Track Operating Weight	3,536 lb (1 604 kg)
Wide Track Operating Weight	3,783 lb (1 716 kg)

### DIMENSIONS

Overall Height	56.5 in (1 435 mm)
Overall Length (Without Bucket)	85.6 in (2 175 mm)
Narrow Track Machine Width	35.0 in (890 mm)
Narrow Track Bucket Width	36.0 in (914 mm)
Wide Track Machine Width	40.4 in (1 026 mm)
Wide Track Bucket Width	42.0 in (1 067 mm)





# UNLOAD ALL KINDS OF “CAN DO” ON ALL KINDS OF PROJECTS.

We offer various small articulated loaders, including an electric model, to fit the jobs you want to do and your budget. All of them give you bigtime horsepower and lifting capacity. And there are more than 70 attachments available. So, you can buy one machine that does the work of many. They're all easy to operate and give the operator the kind of comfort and control you'd only expect to find on much bigger machines.









## EXPLORE THE FEATURES

# WHEN IT COMES TO FEATURES, WE THINK BIG.

Yes, they're small enough to haul around with a pick-up truck and a trailer, but CASE small articulated loaders give you the kind of features that are born on bigtime jobsites.

### 70+ ATTACHMENTS.

We offer a wealth of attachments, and a CII coupler makes non-CASE attachments compatible with CASE SL Series small articulated loaders. Attachments for our smaller SALs are compatible with the CASE mini track loader. Attachments for the larger SALs are compatible with skid steer loaders and compact track loaders.

### CLEAN, QUIET, ELECTRIC POWER.

The SL22EV small articulated loader gives you the option of adding an electric model to your stable. It's perfect for indoor work and any noise-sensitive environment. Also for bidding on the growing number of contracts where EV machinery is required.

### NIMBLE.

The new CASE SL Series small articulated loaders are narrower, lighter, and more compact than other machines, making them easy to transport with a regular pickup and a trailer and easy to use in tight spaces.





### TELESCOPIC REACH.

Several models feature telescoping arms for added reach when loading trucks or moving material from high areas. These can serve as a replacement for telehandlers.

### FORWARD ARTICULATION.

CASE small articulated loaders put the operator station on the rear section, allowing for larger cab size and easier entry/exit. The rear tires track inline with the front tires for a tighter turn radius. It also allows the operator to work alongside walls and gives clear sightline to the working area. You get greater cab stability with zero cab swing compared to others with rear articulation.



### CASE-LEVEL COMFORT

Tough jobs shouldn't mean uncomfortable workdays—and with CASE-level cab design, you get comfort in spades. A roomy cab, near-360-degree visibility, an adjustable seat and ergonomic controls come together to prioritize operator comfort no matter the task. Choose from heated cab options with the CASE Series SL15, SL22EV, SL23, SL27 and SL27 TR, or additional air conditioning with the SL35 TR and SL50 TR.

### CONSTRUCTION-GRADE SERVICE.

You're not buying from a lawn-and-garden dealer when you go with CASE. You get the full service and support of the CASE dealer network, which has the qualified technicians and agility you need to limit downtime if there's ever an issue.

### OPERATOR-FIRST DESIGN.

A simple operator station offers 360-degree visibility and the machine drives like a utility tractor with a steering wheel and loader control. It's designed to make operators feel comfortable instantly, and stay that way for hours.



## EV SMALL ARTICULATED LOADERS

# BUILT TO WORK HARD. ENGINEERED TO WORK QUIET.

The SL22EV brings serious capability in a cleaner, quieter, zero-emissions package. Whether you're working indoors, on turf or in residential areas, this electric small articulated loader delivers up to 5-6 hours of runtime and impressive lift capacity—all without sacrificing performance. Compact enough to move through tight spaces, yet strong enough to move serious material, it's perfect for contractors bidding on EV-required jobs or those looking to cut fuel costs while lifting their business higher.

## SL22EV KEY SPECIFICATIONS

### ELECTRICAL POWERTRAIN

Nominal Battery Voltage	48V
Battery Capacity	24.9 kWh
On-Board Charger	240V 1Ø NEMA 6-20
On-Board Charging Time 20-80%	5.2 hr
On-Board Charging Time 0-100%	8.7 hr
Run Time	5-6 hr depending on application

### WARRANTY

Vehicle Base Warranty	2 yr / 1,000 hr
Electric Powertrain Warranty*	3 yr / 3,000 hr

\*Includes all electric powertrain system components including battery, motors, inverters, etc.







**EV**

# THERE'S NOTHING **MINI** ABOUT THEIR CAPABILITIES.

We give you an extensive line-up of mini excavators to choose from, including the CX15EV and new CX25EV electric models. So, you can load the one that fits your business like a glove on your pick-up truck trailer. All are construction-grade. You get plenty of power, top-notch operator comfort and control and a wealth of heavy-duty attachments you can add to make short work of the kinds of jobs you want to take on with your growing business.









## EXPLORE THE FEATURES

# WE DUG DEEPER TO HELP MAKE YOUR WORK EASIER.

CASE mini excavators are built from the ground up to give you top-of-the-line features, comfort and control in a compact machine that's easy-to-own, easy-to-operate, easy-to-maintain and easy-to-trailer.



### **PURPOSE-BUILT FOR ATTACHMENTS.**

Standard multifunction auxiliary hydraulics and a standard 2nd auxiliary circuit + an optional 3rd auxiliary circuit put a world of attachments at your fingertips.







#### **LARGE COLOR MONITOR.**

A large LCD color monitor means easy operation and control of machine performance, hydraulic settings and easy access to critical machine data.

#### **TRUE ZERO TAILSWING DESIGN.**

Get massive performance that lets you work extremely close to buildings and obstacles.

#### **TELEMATICS.**

CASE Telematics are standard with all D Series mini excavators, giving you real-time information and insights on machine performance, utilization and service schedules that's easy to access and understand.

#### **SUPERIOR STABILITY & BACKFILLING.**

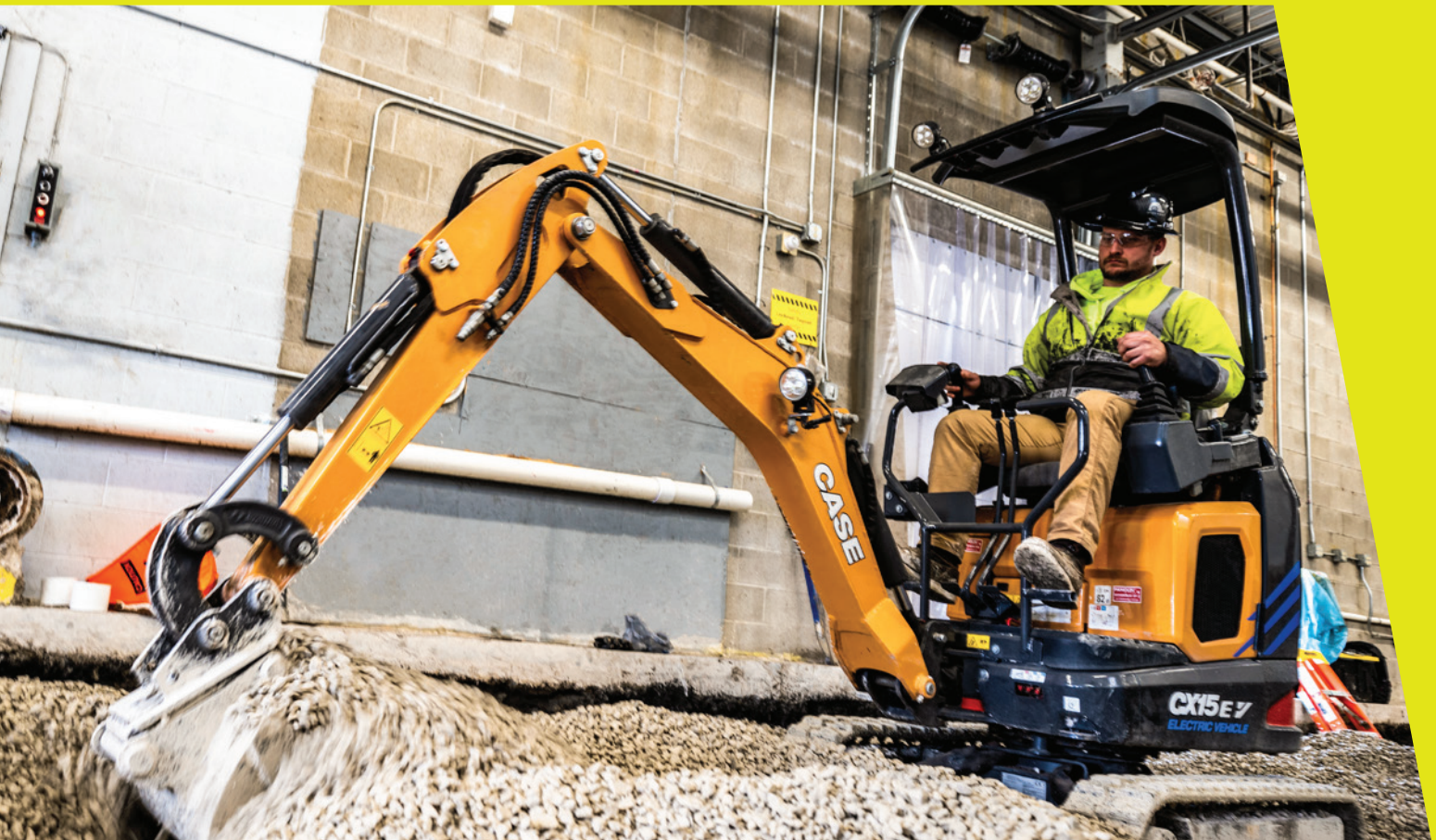
The standard two-way and optional six-way blade gives the operator the confidence needed to get the job done.



## EV SMALL ARTICULATED LOADERS

# POWER UP. DIG IN.

The CASE CX15EV and CX25EV mini excavators prove that electric can still mean serious performance. Both deliver up to 8 hours of runtime with fast off-board charging. The CX15EV offers zero-tail swing agility for tight or indoor jobs, while the CX25EV adds more digging depth, reach and battery capacity for high-output work. Quiet, clean and packed with CASE reliability—these electric machines are built for real work.





## CX15EV KEY SPECIFICATIONS

### ELECTRICAL POWERTRAIN

Motor Type	Internal permanent magnet (IPM)
Drive Motor Power	21 hp (16 kW)
Nominal Battery Voltage	102 Volts
Battery Capacity	21.5 kWh
Expected Run time	4 - 8 hr
On-Board Charger	120V 1 Phase
On-Board Charging Time 0-100%	14 hr
Off-Board Charger	208V 3 Phase, 240V 1 Phase, 480V 3 Phase Optional
Off-Board Charging Time 0-100%	<1 - 3 hrs

### WARRANTY

Vehicle Base Warranty	2 yr / 2,000 hr
Electric Powertrain Warranty*	3 yr / 3,000 hr

## CX25EV KEY SPECIFICATIONS

### ELECTRICAL POWERTRAIN

Motor Type	Internal permanent magnet (IPM)
Drive Motor Power	34 hp (25 kW)
Nominal Battery Voltage	102 Volts
Battery Capacity	25.8 kWh
Expected Run time	4 - 8 hr
On-Board Charger	240V 1 Phase
On-Board Charging Time 0-100%	9 hr
Off-Board Charger	208V 3 Phase, 240V 1 Phase, 480V 3 Phase Optional
Off-Board Charging Time 0-100%	2 - 7 hrs

### WARRANTY

Vehicle Base Warranty	2 yr / 2,000 hr
Electric Powertrain Warranty*	3 yr / 3,000 hr

\*Includes all electric powertrain system components including battery, motors, inverters, etc.

## COMPACT WHEEL LOADERS

---

# A MACHINE TO HELP YOU MAKE THE RIGHT MOVES.

Growing a business means making the right moves—and nothing scoops, pushes and moves like a CASE compact wheel loader. These machines deliver maximum muscle in a dense package, giving you plenty of power without cutting corners on comfort, control or convenience. Packed with features like lightning-fast attachment changes, easy maneuverability and simple service points, these loaders make tough jobs simple and help you focus on what matters most: making big moves that benefit your bottom line.







## EXPLORE THE FEATURES

# A MUSCLE-PACKED MOBILE MISSION CONTROL.

CASE compact wheel loaders combine three things—muscle, mobility and mounds of load-lightening features—to help you haul and lift whatever's on your list.

### COMPACT COMFORT.

Shut out noise, dust and debris with a fully sealed and pressurized 5-foot-wide cab that maximizes comfort while cushy ergonomics, optional climate control, radio options and intuitive controls turn your workspace into a personal command center.

### MAINTENANCE-FREE.

Make endless maintenance lists a distant memory with Tier 4 Final emission solutions: no regeneration, no costly filter replacements, no extreme exhaust temperatures and no after-treatment fluids to worry about here.





### **COMPLETE CONTROL.**

Need to dial in your settings? Use optional Creep Speed to independently set engine RPM and ground speeds for more control over performance and attachments. Meanwhile, the Inch & Brake pedal lets you divert power to hydraulics systems without connecting the drive all while keeping your RPM constant.

### **STRONG, TOUGH AND STABLE.**

A dense frame offers a tighter turning radius and better clearance in constricted spaces, like barns, outbuildings and narrow passages while Z-bar linkage maximizes breakout force for even the biggest jobs. The rear axle oscillates to a max angle of 20 degrees—allowing wheels to maintain ground contact in uneven terrain.

### **LIGHTNING-FAST HYDRAULIC HOOKUPS.**

Swapping out attachments has never been so simple. Skid steer-style coupler and auxiliary hydraulic connections let you swap attachments fast, giving you more flexibility to adapt.



## EV COMPACT WHEEL LOADERS

# HEAVY DUTY WITHOUT THE HEAVY FUEL BILL.

The CL36EV compact wheel loader brings brute electric power to your tightest and toughest jobsites. It lifts over 3,700 lb with a full-size reach height of over 10 feet—all with zero engine emissions. It's built for hard work in noise-sensitive zones and low-carbon projects, with quick-charge capabilities and the same CASE-grade toughness as its diesel siblings. It's time to get behind the wheel of what's next.

## CL36EV KEY SPECIFICATIONS

### ELECTRICAL POWERTRAIN

Motor Type	3 Phase AC Induction
Implement Motor Power	30 hp (22 kW)
Nominal Battery Voltage	96 Volts
Battery Capacity	25 kWh
Expected Run time	3 - 6 hr
On-Board Charger - J1772 Compatible	240V 1 Phase
On-Board Charging Time 0-100%	6 hr
Off-Board Charger	208V 3 Phase, 240V 1 Phase, 480V 3 Phase Optional
Off-Board Charging Time 0-100%	1.4 - 2.8 hrs

### WARRANTY

Vehicle Base Warranty	2 yr / 2,000 hr
Electric Powertrain Warranty*	3 yr / 3,000 hr
EV Care	3 yr / 3,000 hr

\*Includes all electric powertrain system components including battery, motors, inverters, etc.







**EV**

# DON'T MESS WITH THE DIRT DOMINATOR.

CASE B Series compact track loaders: the ultimate job-crushing machines that have defined versatility since they first came online. Born from a legacy of industry-leading performance, these track loaders pack productivity-boosting power and torque while offering endless flexibility, serving as get-more-done-machines for every landscaping, nursery or tree service job that comes down the pike.







## EXPLORE THE FEATURES

# BREAKING GROUND, BREAKING LIMITS.

From precision digging to heavy lifting, CASE compact track loaders don't just handle the task—they redefine it. Engineered to adapt, these machines up productivity, cut downtime and turn otherwise complex jobs into seamless operations.

### **MORE UPTIME, LESS MAINTENANCE.**

Tool-free access to oil coolers, radiators and maintenance points means less downtime. The entire cab lifts forward for comprehensive drivetrain access, turning maintenance from a chore into a quick pit stop.

### **FUSS-FREE EMISSIONS.**

Tier 4 Final emissions solutions eliminate complexity. No intricate maintenance, no filter headaches—just industry-compliant performance that's easier to service and keeps you focused on the job.

### **MAKE LIFE EASY WITH EZ TRAC.**

The innovative EZ Trac suspension system features a rigid chassis mount with pivoting bogey-mounted rollers, delivering unmatched ground contact and operator comfort. Available on TR340B, TV370B, TV450B and TV620B models.





### **CAB COMMAND.**

Wide doors, low entry and oversized steps create a roomy interior with unprecedented legroom. Bluetooth® radio with USB compatibility keeps you connected and hands-free while you work.

### **CHOOSE YOUR LIFTING STYLE.**

Two lift configurations give you total control: radial and vertical. Radial lift excels in tight spaces, perfect for precision grading, prying and below-grade digging. Vertical lift dominates material handling, truck loading and pallet stacking.

### **HYDRAULIC MUSCLE.**

More hydraulic options bring serious power to your jobsite. Optional High Flow gives you more flow while Enhanced High Flow gives more flow and 4,000 psi for powering attachments like cold planers and mulching heads.



# STEEL- EDGED PERFORMANCE.

Forged from over 50 years of relentless performance success, CASE B Series skid steer loaders are your ultimate jobsite weapon. These machines don't just do the work—they demolish challenges across land-clearing, snow removal, demolition and beyond with plenty of power, intuitive controls, multiple lift configurations, attachment versatility and industry-proven reliability.







## EXPLORE THE FEATURES

# SKID PAST THE COMPETITION.

CASE skid steer loaders are built to do more, no matter what “more” is—from easy-to-swap attachments to swift, smooth, smart product features, these compact construction beasts stand ready to conquer your next mission with ease.

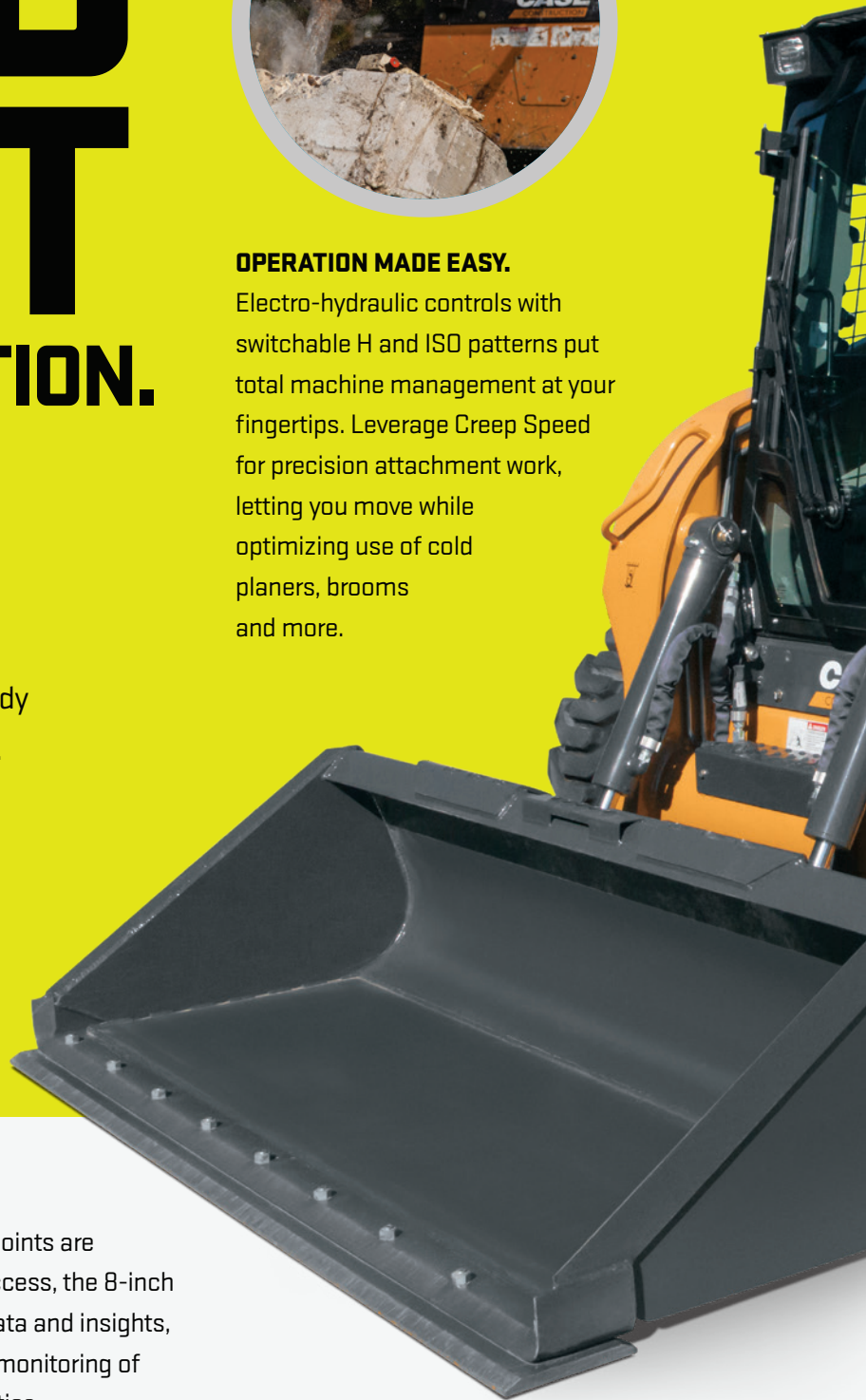


### OPERATION MADE EASY.

Electro-hydraulic controls with switchable H and ISO patterns put total machine management at your fingertips. Leverage Creep Speed for precision attachment work, letting you move while optimizing use of cold planers, brooms and more.

### MANAGE MAINTENANCE.

Maintenance made simple: all critical service points are grouped at the rear of the machine for quick access, the 8-inch LCD display system gives real-time machine data and insights, and optional CASE Telematics provide remote monitoring of engine hours, trouble codes and other diagnostics.







#### **VISIBLE RESULTS.**

Large windows, a low-profile hood and minimal structural obstructions offer a clear, 360-degree jobsite view—perfect for tight spaces and unconventional tasks.



#### **COMFORT AND CAPABILITY.**

A spacious cab with low-entry design, adjustable armrests and an optional heated air-suspension seat upgrades your work environment while Bluetooth® connectivity and an 8-inch LCD display keep you connected and focused on getting the job done.



#### **CHOOSE YOUR CONFIGURATION, MASTER YOUR TERRAIN.**

Two lift configurations—radial and vertical—offer ultimate versatility. Radial lift excels in tight spaces and gives you more reach at mid-lift height, while vertical lift dominates material handling and truck loading.

# WHATEVER THE JOB DEMANDS, WE'VE GOT IT.

## SMALL ARTICULATED LOADERS



SPECIFICATIONS	SL12	SL12 TR	SL15	SL22EV	SL23
Engine	D902	D902	D1105	—	D1803 CR
Displacement/Cylinders	54.8 in³ (0.898 L)	54.8 in³ (0.898 L)	68.5 in³ (1.123 L)	24.9 kWh (Battery Total Usable Capacity)	91.4 in³ (1.498 L)
Emissions Certification	Tier 4 Final/Stage V	Tier 4 Final/Stage V	Tier 4 Final/Stage V	Zero emissions	Tier 4 Final/Stage V
Gross Horsepower	25 hp (18.5 kW)	25 hp (18.5 kW)	25 hp (18.5 kW)	Traction 9 hp (6.5 kW) Implement 16 hp (12 kW)	25 hp (18.5 kW)
Peak Torque	41.4 lb ft (56.1 Nm)	41.4 lb ft (56.1 Nm)	41.4 lb ft (56.1 Nm)	—	41.4 lb ft (56.1 Nm)
Fork Tipping Load (ISO) Straight*	1,435 lb (650 kg)	1,665 lb (755 kg)	2,680 lb (1 215 kg)	3,095 lb (1 405 kg)	2,930 lb (1 330 kg)
Max Travel Speed	9.3 mph (15 kph)	9.3 mph (15 kph)	11.8 mph (19 kph)	11.2 mph (18 kph)	12.4 mph (20 kph)
Operating Weight (Open Cab)	2,425 lb (1 100 kg)	2,646 lb (1 200 kg)	3,362 lb (1 525 kg)	4,850 lb (2 200 kg)	5,181 lb (2 350 kg)
Auxiliary 1: Max Flow Rate	7.4 gpm (28 L/min)	7.4 gpm (28 L/min)	11.1 gpm (42 L/min)	9.2 gpm (35 L/min)	8.5 gpm (32 L/min)
DIMENSIONS	SL12	SL12 TR	SL15	SL22EV	SL23
Hinge Pin Height	85.4 in (2 170mm)	110.2 in (2 800 mm)	81.4 in (2 800 mm)	96.5 in (2 450 mm)	111 in (2 825 mm)
Dump Height (Fully Raised @ 45° Dump)	54.3 in (1 380 mm)	83.4 in (2 120 mm)	53.5 in (1 360 mm)	66.1 in (1 680 mm)	96.4 in (2 450 mm)
Height to top of ROPS**	81.4 in (2 060 mm)	81.4 in (2 060 mm)	87.7 in (2 230 mm)	90.6 in (2 300 mm)	90.5 in (2 300 mm)
Overall Width** (Without Bucket)	37.7 in (960 mm)	37.7 in (960 mm)	43.3 in (1 100 mm)	48.4 in (1 230 mm)	49.3 in (1 251 mm)
Overall Length (Without Bucket)	87.0 in (2 211 mm)	87.0 in (2 211 mm)	107.0 in (2 718 mm)	150.8 in (3 830 mm)	123.8 in (3 145 mm)
Wheelbase	47.4 in (1 205 mm)	49.1 in (1 247 mm)	55.9 in (1 419 mm)	62.2 in (1 580 mm)	62.2 in (1 580 mm)

\*Measured at Mid Fork

\*\*Equipped with smallest available tire option.





SPECIFICATIONS	SL27	SL27 TR	SL35 TR	SL50 TR
Engine	D1803 CR	D1803 CR	V2403 CR	V3307 CR
Displacement/Cylinders	111.4 in³ (1.826 L)	111.4 in³ (1.826L)	148.5 in³ (2.434 L)	203.3 in³ (3.331 L)
Emissions Certification	Tier 4 Final/Stage V	Tier 4 Final/Stage V	Tier 4 Final/Stage V	Tier 4 Final/Stage V
Gross Horsepower	50 hp (37.0 kW)	50 hp (37.0 kW)	65 hp (48.6 kW)	74 hp (55.4 kW)
Peak Torque	111.0 lb ft (150.4 Nm)	111.0 lb ft (150.4 Nm)	146.4 lb ft (198.5 Nm)	195.4 lb ft (265.0 Nm)
Fork Tipping Load (ISO) Straight*	4,400 lb (1 995 kg)	3,750 lb (1 702 kg)	4,795 lb (2 175 kg)	5,910 lb (2 680 kg)
Max Travel Speed	18.6 mph (30 kph)	18.6 mph (30 kph)	18.6 mph (30 kph)	21.6 mph (34.7 kph)
Operating Weight (Open Cab)	5,732 lb (2 600 kg)	5,940 lb (2 694 kg)	8,818 lb (4 000 kg)	11,464 lb (5 200 kg)
Auxiliary 1: Max Flow Rate	13.5 gpm (51 L/min)	13.5 gpm (51 L/min)	18.5 gpm (70 L/min)	20.6 gpm (78 L/min)
DIMENSIONS	SL27	SL27 TR	SL35 TR	SL50 TR
Hinge Pin Height	99.2 in (2 520 mm)	146 in (3 710 mm)	169 in (4 310 mm)	171 in (4 350 mm)
Dump Height (Fully Raised @ 45° Dump)	68.9 in (1 750 mm)	114.9 in (2 920 mm)	122 in (3 100 mm)	133 in (3 400 mm)
Height to top of ROPS**	92.1 in (2 340 mm)	92.5 in (2 350 mm)	91.7 in (2 330 mm)	100.3 in (2 550 mm)
Overall Width** (Without Bucket)	53.5 in (1 360 mm)	53.5 in (1 360 mm)	57.8 in (1 470 mm)	61.4 in (1 560 mm)
Overall Length (Without Bucket)	136.5 in (3 468 mm)	145 in (3 683 mm)	160.1 in (4 067 mm)	209.1 in (5 310 mm)
Wheelbase	66.9 in (1 700 mm)	66.9 in (1 700 mm)	77.6 in (1 972 mm)	80.5 in (2 044 mm)

\*Measured at Mid Fork

\*\*Equipped with smallest available tire option.

# YOUR NEXT MACHINE IS RIGHT HERE.

## MINI EXCAVATORS



SPECIFICATIONS	CX12D	CX15EV	CX17C	CX19D	CX25EV	CX26C	CX30C
Engine	Kubota D722	—	Kubota D902	Yanmar 3TNV76	—	Kubota D1305	Kubota D1305
Engine Horsepower	11.8 hp (8.8 kW)	21 hp (16 kW)	16.8 hp (12.5 kW)	18.4 hp (13.7 kW)	34 hp (25 kW)	24.8 hp (18.5 kW)	24.8 hp (18.5 kW)
Max Travel Speed	2.4 mph (3.8 kph)	2.4 mph (3.8 kph)	2.6 mph (4.2 kph)	2.7 mph (4.4 kph)	2.5 mph (4 kph)	2.7 mph (4.3 kph)	2.7 mph (4.3 kph)
Max Pump Rated Flow	6.9 gpm (26 L/min)	—	2 x 5 + 3 gpm (2 x 18.8 + 11.3 L/min)	13 gpm (49.1 L/min)	—	2 x 7.3 + 5.2 gpm (2 x 27.6 + 19.6 L/min)	2 x 7.3 + 5.2 gpm (2 x 27.6 + 19.6 L/min)
AUX1 Max Flow	6.9 gpm (26 L/min)	7.4 gpm (28 L/min)	7.9 gpm (30 L/min)	8.2 gpm (31.1 L/min)	13.2 gpm (50 L/min)	12.2 gpm (46 L/min)	12.2 gpm (46 L/min)
AUX2 Max Flow	—	—	—	—	—	—	—
Minimum Operating Weight*	—	3,186 lb (1 445 kg)	3,910 lb (1 775 kg)	—	—	5,520 lb (2 505 kg)	—
Maximum Operating Weight*	—	—	—	—	5,467 lb (2 480 kg)	—	6,636 lb (3 010 kg)
DIMENSIONS	CX12D	CX15EV	CX17C	CX19D	CX25EV	CX26C	CX30C
Overall Reach Height	9 ft 11 in (3 025 mm)	10 ft 5 in (3 115 mm)	12 ft 1 in (3 680 mm)	12 ft 2 in (3 710 mm)	12 ft 9 in (3 885 mm)	13 ft 7 in (4 150 mm)	14 ft 0 in (4 270 mm)
Maximum Dig Radius	11 ft 8 in (3 545 mm)	12 ft 0 in (3 645 mm)	13 ft 3 in (4 030 mm)	13 ft 10 in (4 210 mm)	15 ft 0 in (4 480 mm)	14 ft 8 in (4 480 mm)	15 ft 3 in (4 650 mm)
Overall Height	7 ft 7 in (2 300 mm)	7 ft 7 in (2 300 mm)	7 ft 7 in (2 320 mm)	7 ft 9 in (2 370 mm)	7 ft 10 in (2 395 mm)	8 ft 2 in (2 500 mm)	8 ft 2 in (2 500 mm)
Overall Transport Length	11 ft 3 in (3 425 mm)	10 ft 5 in (3 180 mm)	11 ft 5 in (3 480 mm)	12 ft 8 in (3 860 mm)	13 ft 7 in (4 145 mm)	13 ft 3 in (4 030 mm)	13 ft 9 in (4 180 mm)
Machine Width – Retracted Tracks	2 ft 7 in (790 mm)	2 ft 7 in (790 mm)	3 ft 3 in (990 mm)	3 ft 3 in (990 mm)	3 ft 3 in (990 mm)	—	—
Machine Max Width	3 ft 5 in (1 050 mm)	3 ft 5 in (1 050 mm)	4 ft 3 in (1 300 mm)	4 ft 3 in (1 300 mm)	4 ft 3 in (1 300 mm)	4 ft 11 in (1 500 mm)	5 ft 1 in (1 550 mm)

\*Specifications may vary based on machine configurations





SPECIFICATIONS	CX37C	CX42D	CX50D	CX57C	CX60C	CX60D
Engine	Yanmar 3TNV88F-ESHYB	Kubota D1803	Perkins 404J-E22T	Yanmar 4TNV98C	Yanmar 4TNV98C	Kubota V2607-CR-T
Engine Horsepower	24.4 hp (18.2 kW)	43.3 hp (32.3 kW)	58.7 hp (43.8 kW)	66.9 hp (49.9 kW)	64.7 hp (48.3 kW)	59.4 hp (44.3 kW)
Max Travel Speed	2.6 mph (4.2 kph)	2.8 mph (4.5 kph)	2.8 mph (4.5 kph)	2.5 mph (4.1 kph)	2.5 mph (4.0 kph)	2.8 mph (4.5 kph)
Max Pump Rated Flow	2 x 9.9 + 6.1 gpm (2 x 37.4 + 23.1 L/min)	28.3 + 5.9 gpm (107 + 22.3 L/min)	34.1 + 7.6 gpm (129 + 28.8 L/min)	2 x 15.3 + 10.1 gpm (2 x 57.8 + 38.4 L/min)	2 x 14.5 + 10.1 gpm (2 x 55 + 38.4 L/min)	44.6 gpm (168.8 L/min)
AUX1 Max Flow	16.0 gpm (60.5 L/min)	18.5 gpm (70 L/min)	18.5 gpm (70 L/min)	15.3 gpm (57.8 L/min)	14.5 gpm (55 L/min)	22.5 gpm (85 L/min)
AUX2 Max Flow	—	10.6 gpm (40 L/min)	10.6 gpm (40 L/min)	7.9 gpm (30 L/min)	7.9 gpm (30 L/min)	15.9/10.6 gpm (60/40 L/min)
Minimum Operating Weight*	7,990 lb (3 625 kg)	9,259 lb (4 200 kg)	10,912 lb (4 950 kg)	—	12,940 lb (5 870 kg)	13,162 lb (5 970 kg)
Maximum Operating Weight*	—	—	11,574 lb (5 250 kg)	12,320 lb (5 590 kg)	13,760 lb (6 240 kg)	—
DIMENSIONS	CX37C	CX42D	CX50D	CX57C	CX60C	CX60D
Overall Reach Height	15 ft 9 in (4 810 mm)	16 ft 5 in (5 010 mm)	17 ft 3 in (5 260 mm)	19 ft 0 in (5 780 mm)	18 ft 8 in (5 680 mm)	19 ft 6 in (5 950 mm)
Maximum Dig Radius	17 ft 5 in (5 315 mm)	17 ft 9 in (5 400 mm)	18 ft 6 in (5 630 mm)	20 ft 2 in (6 150 mm)	20 ft 2 in (6 150 mm)	21 ft 4 in (6 490 mm)
Overall Height	8 ft 2 in (2 500 mm)	8 ft 3 in (2 510 mm)	8 ft 5 in (2 570 mm)	8 ft 4 in (2 550 mm)	8 ft 4 in (2 550 mm)	8 ft 4 in (2 550 mm)
Overall Transport Length	15 ft 9 in (4 790 mm)	17 ft 5 in (5 300 mm)	18 ft 4 in (5 580 mm)	19 ft 4 in (5 900 mm)	18 ft 3 in (5 600 mm)	19 ft 8 in (6 000 mm)
Machine Width – Retracted Tracks	—	—	—	—	—	—
Machine Max Width	5 ft 9 in (1 740 mm)	5 ft 9 in (1 750 mm)	6 ft 3 in (1 900 mm)	6 ft 4 in (1 920 mm)	6 ft 6 in (1 990 mm)	6 ft 6 in (1 980 mm)

\*Specifications may vary based on machine configurations

# MACHINES THAT MATCH YOUR GRIND.

## COMPACT WHEEL LOADERS



SPECIFICATIONS	21F	121F	221F	321F	421G	CL36EV
Engine	FPT F5H FL463 B	FPT F5H FL463 C*F001	FPT F5H FL463 A	FPT F5H FL463 A	FPT F5M GL413J	—
Displacement/ Cylinders	207 in³ (3.4 L)	207 in³ (3.4 L)	207 in³ (3.4L)	207 in³ (3.4L)	220 in³ (3.6 L)	—
Emissions Certification* Solutions	Tier 4 Final Certified (CEGR, DOC)	Tier 4 Final Certified (CEGR, DOC)	Tier 4 Final Certified (CEGR, SCR)	Tier 4 Final Certified (CEGR, DOC)	Tier 4 Final Stage V Certified	Zero emissions
Gross Horsepower	58 hp (43 kW)	64 hp (48 kW)	74 hp (55 kW)	74 hp (55 kW)	112 hp (82 kW)	Traction Motor Power 23 hp (17 kW)
Net Horsepower	55 hp (41 kW)	60 hp (45 kW)	70 hp (52kW)	70 hp (52 kW)	98 hp (72 m)	Implement Motor Power 30 hp (22 kW)
Peak Torque	181 lb-ft (250 Nm)	192 lb-ft (260 Nm)	232 lb-ft (314 Nm)	232 lb-ft (314 Nm)	232 lb-ft (314 Nm)	—
Tipping Load	6,997 lb (3 174 kg)	6,898 lb (3 129 kg)	8,014 lb (3 635 kg)	8,192 lb (3 716 kg)	10,725 lb (4 865 kg)	3,728 lb (1 942 kg)
Bucket Breakout Force	9,199 lb (4 172 kg)	8,971 lb (4 069 kg)	10,959 lb (4 971 kg)	10,076 lb (4 570 kg)	15,806 lb (7 170 kg)	—
Aux Hydraulics Flow Rate gpm (L/min)	17.7 gpm (67 L/min)	17.7 gpm (67 L/min)	22.5 gpm (85 L/min)	22.5 gpm (85 L/min)	25.1 gpm (95 L/min)	11.9 gpm (45 L/min)
High Flow Aux Hydraulics Flow Rate gpm (L/min)	—	—	34.3 gpm (130 L/min)	34.3 gpm (130 L/min)	33 gpm (125 L/min)	—
Max Travel Speed	12.4 mph (20 kph)	12.4 mph (20 kph)	21.7 mph (35 kph)	25 mph (40 kph)	25 mph (40 kph)	12.4 mph (20 kph)
Fuel Tank (Diesel)	22.7 gal (86 L)	22.7 gal (86 L)	22.7 gal (86 L)	22.7 gal (86 L)	31.1 gal (118 L)	—
Operating Weight	10,518 mph (4 771 kg)	11,826 lb (5 364 kg)	12,547 lb (5 691 kg)	13,633 lb (6 184 kg)	19,775 lb (8 970 kg)	8,911 lb (4 042 kg)

DIMENSIONS	21F	121F	221F	321F	421G	CL36EV
Height to Bucket Hinge Pin	123.5 in (3 136 mm)	123.5 in (3 182 mm)	129.5 in (3 290 mm)	133.7 in (3 395 mm)	146.2 in (3 714 mm)	121.6 in (3 088 mm)
Dump Height with Foundry/ Excavating Bucket	90.6 in (2 302 mm)	92.1 in (2 339 mm)	95.5 in (2 425 mm)	98.1 in (2 493 mm)	106.4 in (2 702 mm)	90.6 in (2 302 mm)
Height to Top of ROPS	96.8 in (2 458 mm)	96.7 in (2 457 mm)	103.4 in (2 627 mm)	105.5 in (2 680 mm)	118.8 in (3 017 mm)	96.6 in (2 453 mm)
Overall Length with Foundry/Excavating Bucket	218.5 in (5 549 mm)	222.2 in (5 645 mm)	231.1 in (5 869 mm)	234.3 in (5 952 mm)	251.6 in (6 390 mm)	61.8 in (1 570 mm)

\* Note: CEGR = Cooled Exhaust Gas Recirculation      OC = Diesel Oxidation Catalyst      SCR = Selective Catalytic Reduction



# MORE EARTH MOVING OPTIONS.

## COMPACT TRACK LOADERS



SPECIFICATIONS	TR270B	TR310B	TR340B	TV370B	TV450B	TV620B
Lift Configuration	Radial	Radial	Radial	Vertical	Vertical	Vertical
Engine	FPT F5H FL463A*G001	FPT F5H FL463A*G001	FPT F5B FL413 D*C001	FPT F5H FL463A*G001	FPT F5B FL413 D*C001	FPT F5B FL413 D*C005
Gross Horsepower	74 hp (55 kW)	74 hp (55 kW)	90 hp (67 kW)	74 hp (55 kW)	90 hp (67 kW)	114 hp (85 kW)
Net Horsepower	68 hp (51 kW)	68 hp (51 kW)	84 hp (63 kW)	68 hp (51 kW)	84 hp (63 kW)	114 hp (85 kW)
Peak Torque	232 lb-ft (314 Nm)	232 lb-ft (314 Nm)	282 lb-ft (383 Nm)	232 lb-ft (314 Nm)	282 lb-ft (383 Nm)	339 lb-ft (460 Nm)
Displacement/ Cylinders	207 in³ (3.4 cc) / 4	207 in³ (3.4 cc) / 4	207 in³ (3.4 cc) / 4	207 in³ (3.4 cc) / 4	207 in³ (3.4 cc) / 4	207 in³ (3.4 cc) / 4
Emissions Certification* Solutions	Tier 4 Final Certified (CEGR, DOC)	Tier 4 Final Certified (CEGR, DOC)	Tier 4 Final Certified (CEGR, SCR)	Tier 4 Final Certified (CEGR, DOC)	Tier 4 Final Certified (CEGR, SCR)	Tier 4 Final Certified (CEGR, SCR, DOC)
Rated Operating Capacity (ROC) 35%	1,890 lb (860 kg)	2,170 lb (984 kg)	2,380 lb (1 079 kg)	2,590 lb (1 178 kg)	3,150 lb (1 432 kg)	4,340 lb (1 969 kg)
Rated Operating Capacity (ROC) 50%	2,700 lb (1 225 kg)	3,100 lb (1 406 kg)	3,400 lb (1 542 kg)	3,700 lb (1 682 kg)	4,500 lb (2 045 kg)	6,200 lb (2 812 kg)
Tipping Load	5,400 lb (2 449 kg)	6,200 lb (2 810 kg)	6,800 lb (3 084 kg)	7,400 lb (3 364 kg)	9,000 lb (4 091 kg)	12,400 lb (5 625 kg)
Bucket Breakout Force	7,270 lb (32.3 kN)	8,680 lb (38.6 kN)	8,700 lb (38.7 kN)	8,593 lb (38.2 kN)	9,188 lb (41.8 kN)	12,907 lb (57.4 kN)
Standard Auxiliary Hydraulics	24.2 gpm (91.5 L/min)	24.2 gpm (91.5 L/min)	24.2 gpm (91.5 L/min)	24.2 gpm (91.5 L/min)	24.2 gpm (91.5 L/min)	24.2 gpm (91.5 L/min)
Hydraulic Coupler Size	1/2 in Standard Flow 5/8 in High Flow	1/2 in Standard Flow 5/8 in High Flow	1/2 in Standard Flow 5/8 in High Flow	1/2 in Standard Flow 5/8 in High Flow	1/2 in Standard Flow 5/8 in High Flow	3/4 in
High-Flow Auxiliary Hydraulics	32.4 gpm (122.6 L/min)	32.4 gpm (122.6 L/min)	37.6 gpm (142.5 L/min)	37.6 gpm (142.5 L/min)	39.5 gpm (149 L/min)	41.6 gpm (157 L/min)
Operating Weight	8,270 lb (3 750 kg)	8,880 lb (4 027 kg)	10,000 lb (4 536 kg)	9,945 lb (4 520 kg)	10,610 lb (4 823 kg)	16,300 lb (7 409 kg)

DIMENSIONS	TR270B	TR310B	TR340B	TV370B	TV450B	TV620B
Height to Bucket Hinge Pin	125.1 in (3.18 m)	125.1 in (3.18 m)	126.7 in (3.22 m)	131.1 in (3.33 m)	131.6 in (3.34 m)	140.2 in (3.56 m)
Dump Height with Foundry/ Excavating Bucket	100.6 in (2.56 m)	100.6 in (2.56 m)	102.2 in (2.59 m)	104.5 in (2.66 m)	104.1 in (2.65 m)	109.0 in (2.77 m)**
Height to Top of ROPS	78.7 in (2.00 m)	78.7 in (2.00 m)	80.4 in (2.04 m)	80.4 in (2.04 m)	80.4 in (2.04 m)	84.6 in (2.15 m)
Overall Length with Foundry/ Excavating Bucket	129.1 in (3.28 m)	129.1 in (3.28 m)	142.6 in (3.62 m)	141.4 in (3.59 m)	144.4 in (3.67 m)	159.1 in (4.04 m)**
Track Width	12.6 in (320 mm)	15.75 in (400 mm)	17.7 in (450 mm)	17.7 in (450 mm)	17.7 in (450 mm)	17.7 in (450 mm)

\* Note: CEGR = Cooled Exhaust Gas Recirculation

OC = Diesel Oxidation Catalyst

SCR = Selective Catalytic Reduction

# ENGINEERED TO MOVE MORE THAN JUST DIRT.

## SKID STEER LOADERS



SPECIFICATIONS	SR160B	SR175B	SV185B	SR210B
Lift Configuration	Radial	Radial	Vertical	Radial
Engine	Perkins N844LT-F-45SL	Perkins 404F-E22TA	Perkins 404F-E22TA	FPT F5H FL463 A*G001
Gross Horsepower	60 hp (44.7 kW)	67 hp (50 kW)	60 hp (44.7 kW)	74 hp (55 kW)
Net Horsepower	57 hp (42.2 kW)	64 hp (47.7 kW)	57 hp (42.4 kW)	68 hp (51 kW)
Peak Torque	139 lb-ft (188 Nm)	153 lb-ft (208 Nm)	135 lb-ft (183 Nm)	232 lb-ft (314 Nm)
Displacement/Cylinders	135.2 in³ (2.2 L) / 4	135.2 in³ (2.2 L) / 4	135.2 in³ (2.2 L) / 4	207.0 in³ (3.4 L) / 4
Emissions Certification* Solutions	Tier 4 Final (CEGR, DOC, DPF)	Tier 4 Final (CEGR, DOC, DPF)	Tier 4 Final (CEGR, DOC, DPF)	Tier 4 Final (CEGR, DOC, DPF)
Rated Operating Capacity (ROC) 50%	1,600 lb (726 kg)	1,750 lb (790 kg)	1,850 lb (840 kg)	2,100 lb (955 kg)
Tipping Load	3,200 lb (1 455 kg)	3,500 lb (1 588 kg)	3,700 lb (1 678 kg)	4,200 lb (1 905 kg)
Bucket Cylinder Breakout Force	5,270 lb (23.4 kN)	7,270 lb (32.3 kN)	5,550 lb (24.7 kN)	7,270 lb (32.3 kN)
Standard Auxiliary Hydraulics	18.4 gpm (69.7 L/min)	20.6 gpm (78.0 L/min)	20.6 gpm (78.0 L/min)	24.2 gpm (91.5 L/min)
High-Flow Auxiliary Hydraulics	—	30.7 gpm (116.2 L/min)	30.7 gpm (116.2 L/min)	33.2 gpm (125.7 L/min)
Operating Weight	5,645 lb (2 560 kg)	6,270 lb (2 842 kg)	6,570 lb (2 980 kg)	6,970 lb (3 160 kg)

DIMENSIONS	SR160B	SR175B	SV185B	SR210B
Height to Bucket Hinge Pin	112.0 in (2.85 m)	122.0 in (3.10 m)	120.0 in (3.05 m)	123.0 in (3.12 m)
Dump Height with Low-Profile Bucket**	84.8 in (2.15 m)	94.6 in (2.4 m)	90.7 in (2.31 m)	95.6 in (2.43 m))
Height to Top of ROPS	75.5 in (1.92 m)	77.7 in (1.97 m)	77.7 in (1.97 m)	78.7 in (2.00 m)
Overall Length with Low-Profile Bucket	125 in (3.18 m)	134.3 in (3.41 m)	135.8 in (3.45 m)	133.7 in (3.40 m)
Over-the-Tire Width with Spec. Tires	59.8 in (1.52 m)	64.6 in (1.64 m)	64.6 in (1.64 m)	69.1 in (1.76 m)

\* Note: CEGR = Cooled Exhaust Gas Recirculation

\*\*Measured with Heavy-Duty bucket

OC = Diesel Oxidation Catalyst

SCR = Selective Catalytic Reduction





SPECIFICATIONS	SR240B	SR270B	SV280B	SV340B
Lift Configuration	Radial	Radial	Vertical	Vertical
Engine	FPT F5H FL463 A*G001	FPT F5B FL413 D*C001	FPT F5H FL463 A*G001	FPT F5B FL413 D*C001
Gross Horsepower	74 hp (55 kW)	90 hp (67 kW)	74 hp (55 kW)	90 hp (67 kW)
Net Horsepower	68 hp (51 kW)	84 hp (63 kW)	68 hp (51 kW)	84 hp (63 kW)
Peak Torque	232 lb-ft (314 Nm)	282 lb-ft (383 Nm)	232 lb-ft (314 Nm)	282 lb-ft (383 Nm)
Displacement/ Cylinders	207.0 in³ (3.4 L) / 4	207.0 in³ (3.4 L) / 4	207.0 in³ (3.4 L) / 4	207.0 in³ (3.4 L) / 4
Emissions Certification* Solutions	Tier 4 Final (CEGR, SCR)	Tier 4 Final (CEGR, SCR)	Tier 4 Final (CEGR, SCR)	Tier 4 Final (CEGR, SCR)
Rated Operating Capacity (ROC) 50%	2,400 lb (1 088 kg)	2,700 lb (1 225 kg)	2,800 lb (1 270 kg)	3,400 lb (1 545 kg)
Tipping Load	4,800 lb (2 177 kg)	5,400 lb (2 450 kg)	5,600 lb (2 540 kg)	6,800 lb (3 090 kg)
Bucket Cylinder Breakout Force	8,680 lb (39.4 kN)	8,677 lb (38.6 kN)	8,620 lb (38.3 kN)	9,531 lb (42.4 kN)
Standard Auxiliary Hydraulics	24.2 gpm (91.5 L/min)	24.2 gpm (91.5 L/min)	24.2 gpm (91.5 L/min)	24.2 gpm (91.5 L/min)
High-Flow Auxiliary Hydraulics	37.6 gpm (142.5 L/min)	37.6 gpm (142.5 L/min)	37.6 gpm (142.5 L/min)	38.7 gpm (146.5 L/min)
Operating Weight	7,400 lb (3 350 kg)	8,117 lb (3 681 kg)	8,000 lb (3 630 kg)	9,100 lb (4 136 kg)

DIMENSIONS	SR240B	SR270B	SV280B	SV340B
Height to Bucket Hinge Pin	125.1 in (3.18 m)	125.1 in (3.18 m)	129.5 in (3.29 m)	131.6 in (3.34 m)
Dump Height with Low-Profile Bucket**	98.3 in (2.50 m)	98.3 in (2.50 m)	102.2 in (2.59 m)	102.2 in (2.59 m)
Height to Top of ROPS	78.8 in (2.00 m)	78.8 in (2.00 m)	78.8 in (2.00 m)	80.4 in (2.04 m)
Overall Length with Low-Profile Bucket	146.2 in (3.71 m)	148.0 in (3.76 m)	146.8 in (3.73 m)	148.5 in (3.77 m)
Over-the-Tire Width with Spec. Tires	69.6 in (1.77 m)	69.8 in (1.77 m)	69.6 in (1.77 m)	73.8 in (1.88 m)

\* Note: CEGR = Cooled Exhaust Gas Recirculation

\*\*Measured with Heavy-Duty bucket

OC = Diesel Oxidation Catalyst

SCR = Selective Catalytic Reduction

**NO ONE WILL OUTWORK US.™**



©2025 CNH Industrial America LLC. All rights reserved. CASE and CNH Industrial are trademarks registered in the United States and many other countries, owned by or licensed to CNH Industrial NV, its subsidiaries or affiliates. Any trademarks referred to herein, in association with goods and/or services of companies other than CNH Industrial America LLC., are the property of those respective companies.

IMPORTANT: CASE Construction Equipment Inc. reserves the right to change these specifications without notice and without incurring any obligation relating to such change. Availability of some models and equipment builds vary according to the country in which the equipment is used. The illustrations and text may include optional equipment and accessories and may not include all standard equipment. Your CASE dealer/distributor will be able to give you details of the products and their specifications available in your area.

SAFETY NEVER HURTS!™ Always read the Operator's Manual before operating any equipment. Inspect equipment before using it, and be sure it is operating properly. Follow the product safety signs, and use any safety features provided.

Replaces Form No: CCE202506SMAT  
Form No. **CCE202509SubCompact**