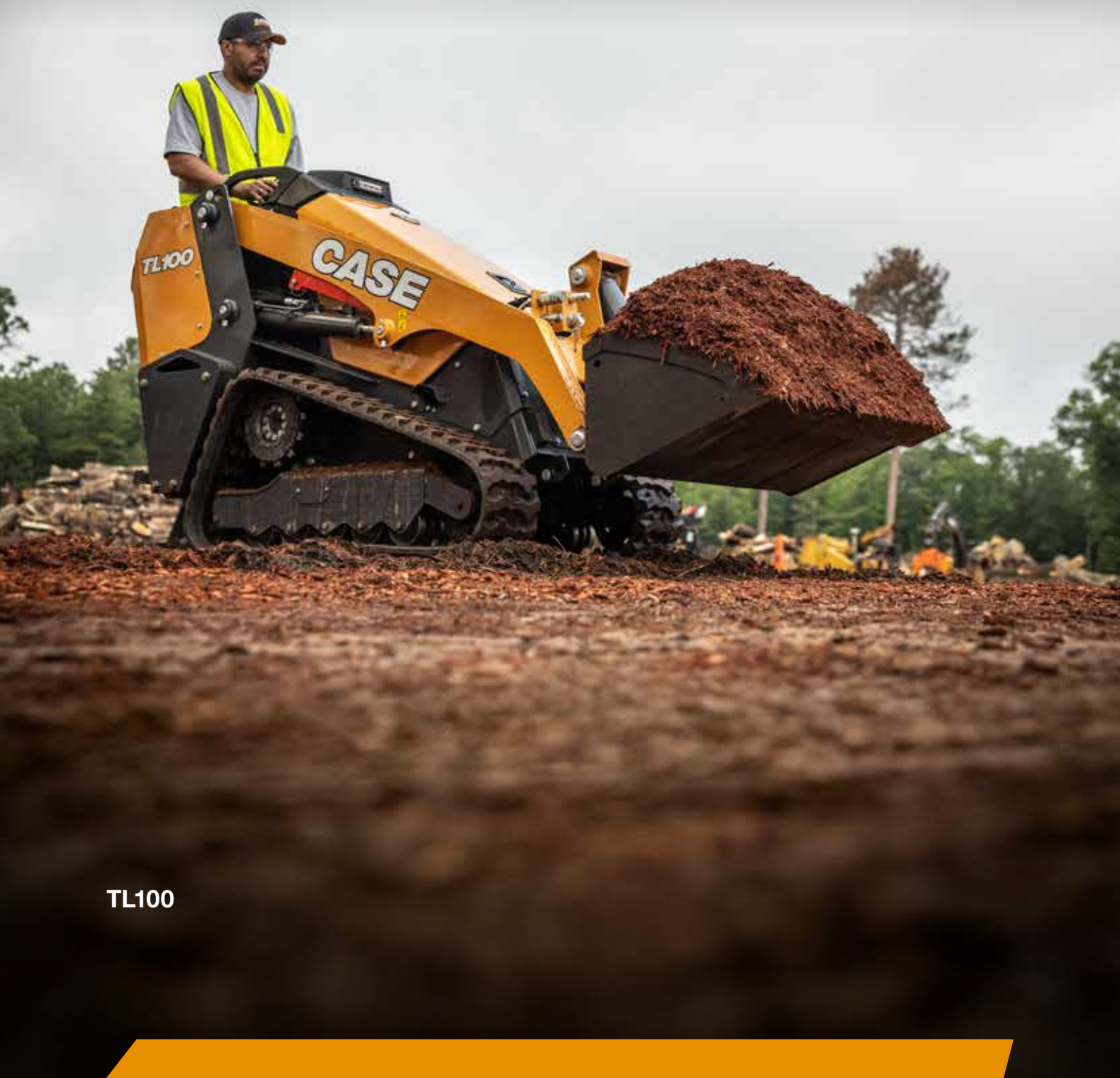




CASE
CONSTRUCTION

MINI TRACK LOADER



TL100

MAIN REASONS TO CHOOSE THE TL100

PREMIUM PRODUCTIVITY

ISO joystick controls, thumbwheel auxiliary hydraulics, and advanced instrumentation ensure ergonomic, intuitive operation for greater efficiency. Clear sightlines to the tracks and bucket edge boost productivity.



COMPACT TRACK DESIGN

Excellent traction on all surfaces: concrete, asphalt, grass, mud, and snow.

- 7-inch track: fits through 36-inch doors and narrow entryways.
- 10-inch track: makes the machine 42 inches wide, reducing ground pressure and enhancing stability.

FUEL EFFICIENT POWER

Stage V engine delivers quiet, smooth, and powerful performance—no DEF, no regeneration. Lower ownership costs, maximum uptime.

LIFTING PERFORMANCE

Radial lift arm design improves digging capability and reduces maintenance needs. A hinge pin height of 7 ft. 2 in. allows easy loading into most dumpsters and trailers.



COMMON INDUSTRY INTERFACE (CII)

Standard CII coupler is compatible with 40+ attachments: soil conditioners, tillers, grapples, sweepers, trenchers, mowers, augers, and more. Designed to handle both simple and advanced tools using standard auxiliary hydraulics.





TL100

MINI TRACK

OPERATING WEIGHT

| | |
|--|---------------------|
| Narrow Track (NT) - 2X Counterweights (STD): | 3,536 lb (1 604 kg) |
| Wide Track (WT) - 6X Counterweight (OPT): | 3,783 lb (1 716 kg) |

OVERALL DIMENSIONS

| | |
|-----------------------------------|--------------------|
| Overall Height | 56.5 in (1 435 mm) |
| Overall Length: Without Bucket | 85.6 in (2 175 mm) |
| Machine Width: | |
| Narrow Track | 35.0 in (890 mm) |
| Wide Track | 40.4 in (1 026 mm) |
| Bucket Width: | |
| Narrow Track | 36.0 in (914 mm) |
| Wide Track | 42.0 in (1 067 mm) |

SERVICE CAPACITIES

| | |
|----------------------|-----------------|
| Fuel Tank | 7.9 gal (30 L) |
| Engine oil w/ filter | 4.8 qt (4.5 L) |
| Hydraulic system | 4.5 gal (17 L) |
| Engine Coolant | 0.9 gal (3.5 L) |

ENGINE

| | |
|------------------------------------|--------------------------------|
| Model | Kubota D1305-E4B |
| Emissions Certification | Stage V |
| Cylinders | 3 |
| Displacement | 77.0 in ³ (1.261 L) |
| Fuel | Diesel |
| Exhaust aftertreatment | N/A |
| Engine speeds | RPM |
| Rated – full load | 2600 |
| Horsepower @ 2600 RPM – SAE J1349: | |
| Gross | 24.8 hp (18.5 kW) |
| Net | 24 hp (18.0 kW) |
| Peak torque @ 1700 RPM | 59.1 lb-ft (80.1 N-m) |

ELECTRICAL

| | |
|----------------|---|
| System Voltage | 12 Volts |
| Alternator | 60 amp |
| Battery | 62 AHR |
| | 540 cold-cranking amps @ 0° F (-18° C°) |

DRIVETRAIN

| | |
|--------------------|-------------------|
| Transmission Type | Hydrostatic |
| Max. Travel speed | 4.7 mph (7.5 kph) |
| Parking brake Type | SAHR pin brake |

LOADER PERFORMANCE SPECS

| Lift Geometry | Radial Lift |
|---|---------------------|
| Narrow Track Rated operating capacity – ROC*: | |
| 35% of tipping load | 992 lb (450 kg) |
| 50% of tipping load | 1,416 lb (643 kg) |
| Narrow Track Tipping load* | 2,833 lb (1 285 kg) |
| Wide Track Rated operating capacity – ROC*: | |
| 35% of tipping load | 1,102 lb (500 kg) |
| 50% of tipping load | 1,574 lb (714 kg) |
| Wide Track Tipping load* | 3,148 lb (1 428 kg) |

NOTE: *Measured using standard equip bucket.

HYDRAULICS

| | |
|--|---|
| Implement pump type | Fixed Gear |
| Displacement | 1.2 in ³ (19 cm ³) |
| Standard flow @ rated engine RPM: | |
| @ 100% efficiency | 13.2 gpm (50 L/min) |
| Loader control valve: | |
| Type | Open center |
| Implement Hydraulics Operating Pressure: | |
| | 2,800 psi (190 bar) |

STANDARD EQUIPMENT

OPERATOR ENVIRONMENT

Hydraulic pilot joystick control
 Loader and ground drive control lockout
 Cushioned operator platform
 Operator presence sensor
 Operator grab handles
 Key start
 Hand throttle
 Cup holder
 Pocket for cellular phone

ENGINE

Engine tip-over shut-off
 Glow plug starting aid
 Locking fuel cap
 Fuel filter with water separator
 Electric fuel pump
 Lock-able hood compartment

OPTIONAL EQUIPMENT

DRIVETRAIN

Wide rubber track belt

HYDRAULICS

Case drain attachment connection
 Bio-hydraulic oil and lubricants

DRIVETRAIN

Dual hydrostatic drive motors
 SAHR parking brake
 5 roller undercarriage
 Narrow rubber track belt

HYDRAULICS

3-spool loader control valve
 1x dual acting auxiliary hydraulics
 Proportional auxiliary hydraulic control on joystick with detent
 1-way or 2-way auxiliary hydraulic selector valve
 Loader arm float

TELEMATICS

CASE SiteWatch™ Telematics – includes hardware and a 5-yr data subscription

LOADER

Radial lift geometry
 CII mechanical attachment coupler
 Loader lift arm support strut
 2x additional counterweight

ELECTRICAL

12V power plug socket
 Front and rear LED work lights
 Master battery disconnect
 Horn

WARRANTY

Base warranty coverage: 2-Year/2,000-Hour
 Full Machine Limited Warranty

ELECTRICAL

14-pin electrical auxiliary connection

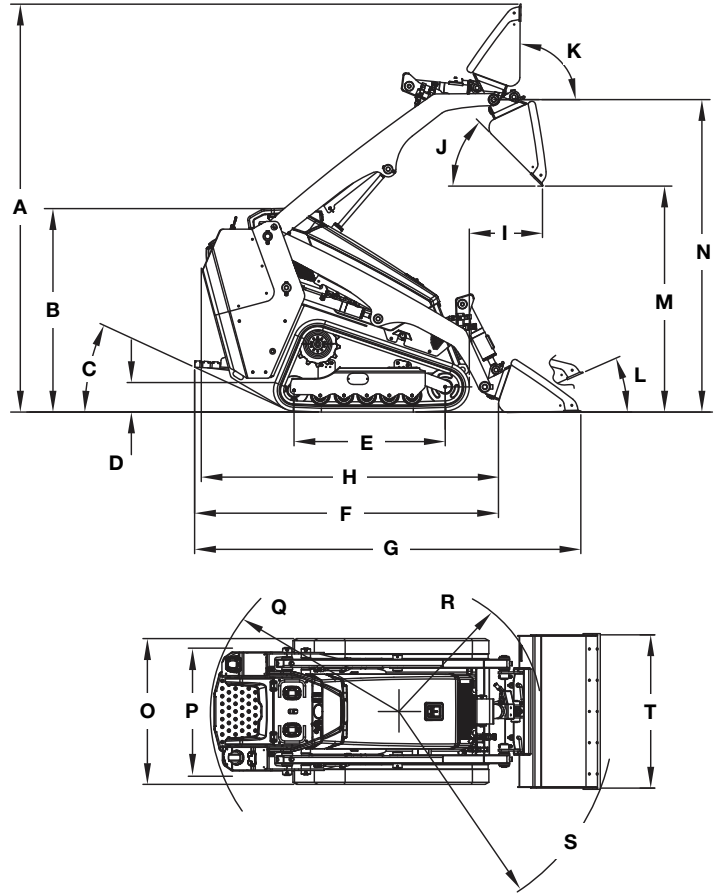
OTHER

English, Spanish, or French Operator Manual

SPECIFICATIONS

DIMENSIONS

| | |
|--|---------------------|
| A. Overall operating height | 114.6 in (2 911 mm) |
| B. Overall height | 56.5 in (1 435 mm) |
| C. Rear departure angle | 31° |
| D. Ground clearance | 8.7 in (222 mm) |
| E. Track length on ground | 41.9 in (1 065 mm) |
| Overall length: | |
| F. without bucket | 85.6 in (2 175 mm) |
| G. with standard bucket | 110.1 in (2 796 mm) |
| H. Transport Length – no bucket, platform raised: | 85 in (2 155 mm) |
| I. Reach at Maximum Dump | 22 in (570 mm) |
| J. Dump angle | 42° |
| K. Maximum rollback at full height | 90° |
| L. Maximum rollback at ground | 24° |
| M. Dump height – standard bucket | 62 in (1 580 mm) |
| N. Hinge Pin Height | 86.7 in (2 201 mm) |
| O. Machine width: | |
| Narrow Track | 35.0 in (890 mm) |
| Wide Track | 40.4 in (1 026 mm) |
| P. Track Gauge: | |
| Narrow Track | 28.0 in (710 mm) |
| Wide Track | 30.6 in (776 mm) |
| Clearance Circle Radius: | |
| Q. Rear | 53.1 in (1 348 mm) |
| R. No bucket | 35.9 in (913 mm) |
| S. Standard bucket | 60.7 in (1 541 mm) |
| T. Bucket Width: | |
| Narrow Track | 36.0 in (914 mm) |
| Wide Track | 42.0 in (1 067 mm) |



Line drawings are for illustrative purpose only and may not be exact representation of unit.

TRACK SELECTION

| Type | Area | Ground Pressure | Width to Outside Track |
|------------------------------|--|------------------------------------|------------------------|
| 7 in (180 mm) – Narrow Track | 594 in ² (0.38 m ²) | 5.9 psi (0.41 kg/cm ²) | 35.0 in (890 mm) |
| 10 in (250 mm) – Wide Track | 825 in ² (0.53 m ²) | 4.6 psi (0.32 kg/cm ²) | 40.4 in (1 026 mm) |



SINCE 1842

BUILDING A STRONG CASE.

Since 1842, at CASE Construction Equipment we have lived by an unwavering commitment to build practical, intuitive solutions that deliver both efficiency and productivity.

We continually strive to make it easier for our customers to implement emerging technologies and new compliance mandates.

Today, our global scale combined with our local expertise enables us to keep customers' real-world challenges at the center of our product development.

The vast CASE dealers' network is always ready to support and protect your investment and exceed your expectations, while also providing you with the ultimate ownership experience.

Our goal is to build both stronger machines—and stronger communities. At the end of the day, we do what's right for our customers and our communities so that they can count on CASE.

CASECE.com

NOTE: Standard and optional fittings can vary according to the demands and specific regulations of each country. The illustrations may include optional rather than standard fittings - consult your CASE dealer. Furthermore, CNH Industrial reserves the right to modify machine specifications without incurring any obligation relating to such changes.

Conforms to directive 2006/42/EC

