

# GUARDIAN™ SELF-PROPELLED FRONT BOOM SPRAYERS



SP310F



# Efficient high-clearance spraying. Ultimate comfort.

---

With a New Holland Guardian™ sprayer you can spray later into the growing season, easily maneuver at the headlands, and make on-the-go adjustments quickly and easily — all from the comfort of a new cab specifically designed for the Guardian sprayer. **The NEW, ground breaking Guardian SP310F front boom sprayer** from New Holland combines rugged construction with innovative design to save you time and make you more productive all season long.





**NEW redesigned chassis** provides up to 1,98 m of clearance for late season applications. A redesigned suspension system makes what was already a great riding sprayer even better.

**Automated rinse** allows you to clean out the tank and boom with the press of a button while in the cab or by using the ground level display.



Whether you prefer nitrogen placement with a dual tube application system or soil injection, we have the right tool for the job.



#### **NutraBoss fertilizer placement system**

**Accurate dual fertilizer application that saves time and minimizes costs.** Apply Nitrogen with NutraBoss, an easy-on, easy-off, lightweight and flexible solution that meets all your late-stage Nitrogen application needs.

# A new way of Guarding your investment.

Guardian front boom sprayers are the easiest way to spray. With the boom in front, you get the very best view of the spray nozzles and the field ahead to confidently cover ground faster. Try the new Guardian SP310F front boom sprayer and **NEVER LOOK BACK.**

**NEW! The ultra-quiet cab** is designed expressly for the SP310F and offers operators maximum comfort, maximum view, control and convenience.

**A larger field of view** provides unmatched visibility of your spraying operation.

**Boom width options up to 41 m!**  
New Holland gives you choices of either a MonoBeam boom up to 36 m wide or a Truss boom up to 41 m wide to match your needs for maximum productivity.

**Highest ground clearance on the market**  
– up to 1.98 m to allow late-season application. For truck transport, you can easily lower the overall height down to 3.88 m from the operator's seat.



**Variable speed cooling fan** runs only as fast as it needs to, saving horsepower and fuel while reducing noise around the sprayer.



**Engine and hydraulic service checkpoints** are easy to access from the walkway by the engine compartment.

**Even weight distribution** provides an ideal balance, with near equal load on each tire, to maximize power to the ground while minimizing compaction.

**Planetary drive system** is electronically controlled and provides a long list of outstanding features such as full-time traction control, cruise control, anti-stall, integrated speed limiting and four driver-programmable speed settings. Add to that a 56 km/h road speed with four-wheel dynamic braking, and you have an effortless system to operate.



#### Additional features:

- **Increased torque and improved fuel economy** from the FPT 6.7L 310-hp turbocharged and aftercooled engine.
- **Hypro product pumps** provide exceptional performance. Choose from either a 795 or 1173 L/min capacity. The 1173 L/min pump features ForceSeal technology that provides for longer dry run time protection.
- **Redesigned lift arms** allow for a clear view of the nozzles and field in front of you.
- **Lighter than previous models** means less soil compaction and a better horsepower-to-weight-ratio.
- **Tight turning radius** for excellent maneuverability.
- **Four-wheel steer** option enables front to rear track following for reduced crop damage at headlands. When engaged, it gives you an exceptionally short 4,1 m turning radius.
- **IntelliSpray™ nozzle system** features individual pulsing valves for more flexibility to select operating speed, with the added benefit of increased spray consistency and maximum crop coverage. If equipped with a Raven Viper 4+ monitor, individual nozzle control can be unlocked.

INTELLISPRAY

# The new benchmark for spraying comfort.

## Quiet, comfortable control

Step into the spacious, newly designed cab and long days will melt away. The wide air-ride seat ensures every operator stays comfortable even after extended spraying hours. Details like footpegs on the steering column, auto climate control, Bluetooth and XM radio, push-button engine start and backlit, dimmable switches, add up to major comfort. The multi-function handle puts all critical controls at your fingertips, while the armrest console moves with you.



## Panoramic visibility

You'll appreciate the expansive view of the field and the full width of the spray boom. Sitting tall in the sprayer, you look through a full height windshield and large wrap-around side windows, past redesigned lift arms, to a front boom.

**Luxury cab option** includes a heated and vented Grammer leather trimmed seat with self-adjusting air suspension, height adjustment and power lumbar, a 12-volt fridge under the instructor seat, leather-wrapped steering wheel, rear camera, auto on/off headlights, integrated self-charging flash light and 110-volt power outlet.



## Stay refreshed on the hottest days

The Automatic Temperature Control (ATC) system comes as standard equipment. Choose the Luxury cab and a refreshing drink is only an arm's length away in the integrated fridge located under the instructor seat.



### Make adjustments conveniently right from the cab

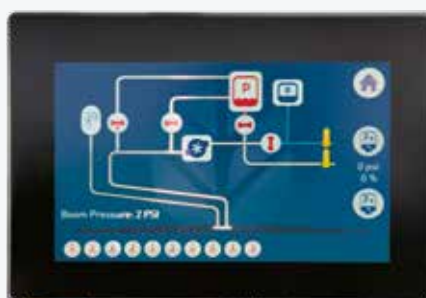
The Guardian SP310F allows you to adapt to changing needs without leaving your seat, including adjusting sprayer under-body clearance from 1,82 to 1,98 meters on-the-go. When spraying fungicide, there's no need to leave the cab to activate the rear fungicide boom. Operation of the standard electric rinse system can be done from either the cab or from the ground. For even more convenience, order the optional auto rinse system.

**Next-level monitoring systems** provide information on the go.

- **A right hand console chassis monitor**, mounted on an adjustable swing arm, is where operators control many functions of the sprayer and select what is displayed on the monitoring screen.
- **A headliner chassis monitor** continually displays operating functions of the chassis including speed, rpm, pressures, temperatures and fuel level. It is mounted on the ceiling where it does not disrupt the operator's line of sight to the spray boom.
- **The ultra-wide 10.4-inch IntelliView™ IV color touchscreen display or Raven Viper 4+** is mounted to a swing arm so operators can position it exactly where they want it.

**A new spray info bar** with light-up section display is mounted to the ceiling and lets you know which boom systems are operating.

Right hand console chassis monitor



Headliner chassis monitor



IntelliView™ IV color touchscreen display



## SPECIFICATIONS

## NEW HOLLAND GUARDIAN™

Model	SP310F		
<b>Deluxe Cab</b>	<ul style="list-style-type: none"> <li>• Ultra Quiet ISO mount cab</li> <li>• 2-way tilt/telescope steering wheel with foot pegs</li> <li>• Cloth air ride seat, with folding instructional seat</li> <li>• Sun visor</li> </ul>	<ul style="list-style-type: none"> <li>• Variable speed pressurization, charcoal filtration, Automatic Temperature Control</li> <li>• AM/FM/WX with CD, Bluetooth, XM, 4 speakers and remote controls</li> </ul>	<ul style="list-style-type: none"> <li>• Touch Screen monitor</li> <li>• 2nd screen to monitor primary functions</li> <li>• Adjustable field computer and chassis monitor placement</li> <li>• Ambiance ceiling lighting</li> </ul>
<b>Luxury Cab</b>	<p><b>All Deluxe Cab features PLUS:</b></p> <ul style="list-style-type: none"> <li>• Self-adjusting leather grammer seat with air-ride suspension (heated and ventilated with power lumbar)</li> </ul>	<ul style="list-style-type: none"> <li>• Leather instructional seat</li> <li>• Leather wrap steering wheel</li> <li>• X-Grip for cell phone</li> <li>• Rear view camera</li> <li>• Auto on/off head lights</li> </ul>	<ul style="list-style-type: none"> <li>• Integrated flash light and 110 volt power outlet</li> <li>• 12-volt fridge under instructional seat</li> </ul>
<b>Engine</b>	FPT® NEF 6 / 6.7 Liter Tier 4B or Tier 2		
<b>Horsepower</b>	212 kw (285 hp) / 231 kw (310 hp) Bulge		
<b>Fuel Tank / DEF Tank</b>	568 L (150 gal.) / 91 L (24 gal.)		
<b>Cooling System</b>	Efficient Single Pass stacked top to bottom, Hydraulically driven variable speed fan with reverse option		
<b>Alternator / Batteries</b>	200 amp with 3 – 1000 cca heavy-duty batteries		
<b>Transmission</b>	Hydrostatic drive with electronic controlled single Danfoss 165 cc, H1 series heavy-duty pump		
<b>Final Drives</b>	Danfoss H 1 Series 80 cc drive motors with Oerlikon Fairfield Torque Hub gearbox final drives (CO17 series)		
<b>Speed Range</b>	Full range with 4 user defined speed ranges. 0 – 56 km (0 – 35 mph)		
<b>Steering</b>	Hydrostatic with heavy-duty ball joints		
<b>Turning Radius 2 wheel steer model</b>	5.48 m (18 feet)		
<b>Turning Radius 4 wheel steer model</b>	In 2 wheel steer mode - 5.48 m (18 feet) In 4 wheel steer mode – 4.1 m (13.5 feet)		
<b>Tread Width</b>	Fixed width – 304.8 cm (120 in.) Auto Adjustable / 304.8 – 406.4 cm (120 – 160 in.)		
<b>Suspension</b>	4 wheel independent, full suspension travel of 51 cm (20 in.), hydraulic leveling/shock absorbers, auto level for each leg		
<b>Crop Clearance</b>	Variable height 182.88 – 198.12 cm (72 – 78 in.)		
<b>Product Tank Options</b>	3785 or 4542 L (1000 or 1200 gal.) Stainless Steel with 7.62 cm (3 in.) fill connection		
<b>Rinse System</b>	Standard electric controls or optional AutoRinse 568 L (150 gal.) poly tank with 2 in. fill connection		
<b>Product Pump (choice of)</b>	Hypro 9306C / Up to 795 L/min (210 gpm) at the pump or Hypro 9307CWS Up to 1,173 L (300 gpm) with ForceField seal technology		
MonoBeam Boom, m	27,30,36 (90,100,120)		
Truss Booms, m	36,40,41 (120,132,135)		
Lift Arm Travel	254 cm (100 in.)		
Nozzle Bodies	3 +1 Way Turret / 5 Way Turret / IntelliSpray		
<b>Dimensions (Shipping):</b>			
Height	388.6 cm (153 in.)		
Width MonoBeam boom bar	414 cm (163 in.)		
Width MonoBeam boom bar	464.8 cm (183 in.)		



Visit our website: [www.newholland.com/za](http://www.newholland.com/za)



The data indicated in this folder are approximate. The models described here can be subjected to modifications without any notice by the manufacturer. The drawings and photos may refer to equipment that is either optional or intended for other countries. Please apply to our Sales Network for any further information. Published by CNHI INTERNATIONAL SA. Brand Marketing and Communication. creative-farm.it - 04/19 - RSA19002