

# PUMA AFS CONNECT

TRACTORS FROM  
185 – 260 hp



**CASE IH**

# THE NEXT LEVEL

The most powerful Puma ever  
– with up to 302 hp

**+11 %**  
more powerful

When we designed our first Puma more than a decade ago, we had power and reliability in mind.

Today's farming requires more than that. Case IH has listened to and understood the needs of countless farmers and contractors – and prioritised what they need most: the latest on- and offboard telematics to enhance productivity, lower cost of ownership, a quieter, more premium operating experience and better uptime in the fields.

**+18 %**  
footprint





**+8 %**  
enlarged cab

**+50 %**  
quieter

RANGE OVERVIEW .....	04 – 05
PACKAGES .....	06 – 07
ADVANCED FARMING SYSTEMS .....	08 – 09
AFS CONNECT .....	10 – 11
COMFORT & CUSTOMIZATION .....	12 – 15
VERSATILITY .....	16 – 17
PERFORMANCE & PRODUCTIVITY .....	18 – 21
SAFETY .....	22 – 23
ENDURANCE & AFTERWORK ROUTINE .....	24 – 27
SAFEGUARD CONNECT .....	28 – 29
SPECIFICATIONS .....	30 – 31

**CASE IH**

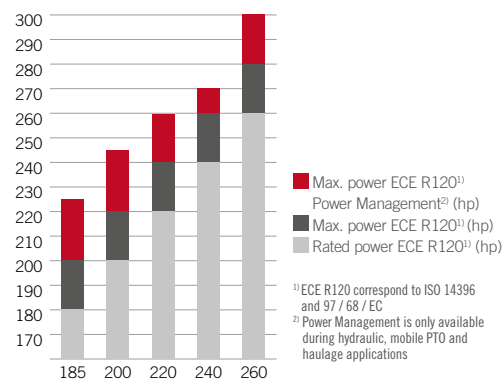


# WHATEVER YOU CHOOSE, PERFORMANCE GOES UP

At Case IH, we understand that each farm has unique priorities. That's why we provide options to meet your specific needs, including two transmission types, a variety of tyre options and high-capacity axle choices. Whether you value versatility, performance, or tractive power, we have a Puma that can fit your needs.

## ENGINE

FPT 6 / 6 cylinders / 6.700 m<sup>3</sup>



## PUMA 185 - 200 - 220 MULTICONTROLLER



### TRANSMISSION

PowerDrive 19x6 full powershift  
40 kph ECO or 50 kph



### GVW

up to 13,650 kg



### TYRES

Front: 600/65 R28  
Rear: 650/65 R42



### AXLES

- Suspended front axle with or without brakes
- Standard rear axle\*\*







### PUMA 185 - 200 CVXDRIVE



#### TRANSMISSION

CVXDrive 40 kph ECO  
or 50 kph ECO



#### GVW

up to 14,400 kg



#### STANDARD TYRES

Front: 600/65 R28  
Rear: 650/65 R42



#### AXLES

- Suspended front axle with or without brakes
- Optional suspended HD front axle with or without brakes
- Standard rear axle

### PUMA 220 - 240 CVXDRIVE



#### TRANSMISSION

CVXDrive 40 kph ECO  
or 50 kph ECO



#### GVW

up to 14,500 kg or 15,000\* kg



#### STANDARD TYRES

Front: 600/65 R28  
Rear: 650/65 R42



#### AXLES

- Suspended front axle with or without brakes
- Optional suspended HD front axle with or without brakes
- Standard rear axle or HD rear axle as option\*\*

### PUMA 260 CVXDRIVE



#### TRANSMISSION

CVXDrive 40 kph ECO  
or 50 kph ECO



#### GVW

up to 15,000 kg



#### STANDARD TYRES

Front: 600/70 R30  
Rear: 710/70 R42



#### AXLES

- Suspended HD front axle with or without brakes
- HD rear axle\*\*



# ONE STANDARD – TWO PACKAGES

The choice is yours

**Your machine, your choice of comfort. Choose from Advanced and Professional editions to tailor your Puma AFS Connect to your needs.**

The equipment packages can be changed by Case IH without prior notification. Please contact your local dealer for the latest configuration.

## ADVANCED

ADVANCED FEATURES FOR DAILY OPERATIONS

- CVXDrive continuously variable transmission (40 kph Eco or 50 kph Eco options)
- Electro-hydraulic remotes and powerful hydraulic pump (165 l/min or 220 l/min optional)
- 4 speed PTO (540/540E/1,000/1,000E)
- Electronic park lock is standard
- Air conditioning, passenger seat & cab suspension
- Front axle suspension is optional
- Intuitive AFS Pro 1200 touchscreen monitor
- Optional advanced headland management (HMC II), AccuGuide autoguidance and AFS Connect telematics
- ISOBUS Class II or III optional



## PROFESSIONAL

UNLOCK THE FULL POTENTIAL OF THE TRACTOR

- CVXDrive continuously variable transmission (40 kph Eco or 50 kph Eco options)
- Electro-hydraulic remotes and powerful hydraulic pump (165 l/min or 220 l/min optional)
- 4 speed PTO (540/540E/1,000/1,000E)
- Electronic park lock is standard
- Air conditioning, passenger seat & cab suspension
- Front axle suspension is optional
- Intuitive AFS Pro 1200 touchscreen monitor
- Advanced functionality Joystick is standard
- Optional advanced headland management (HMC II), AccuGuide autoguidance and AFS Connect telematics
- Power Beyond is standard
- ISOBUS Class II or III optional



# THE NEXT LEVEL OF PROFITABILITY

Case IH Advanced Farming Systems (AFS™) revolutionised precision farming in 1995, allowing farmers to monitor the entire crop production cycle.

With AFS solutions, farmers can increase profits through repeatable accuracy, lower operating costs and reduced overlaps.



## A PRECISION SOLUTION FOR EVERY NEED

Case IH offers a number of precision farming signals with varying levels of accuracy, so that you can choose what's best for your operation.

### RTK+

- Pass to pass: 1.5 cm
- Repeatable: 1.5 cm

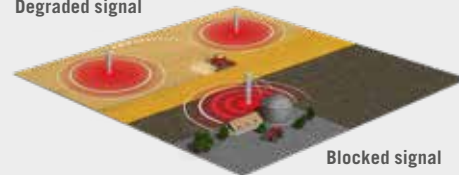
### AFS1

- Pass to pass: 15 cm



### TRADITIONAL SINGLE BASE RTK NETWORK

Degraded signal



### CASE IH AFS RTK+ NETWORK

RTK+ (Real Time Kinematic) is the top-end technology that ensures a fast, dependable signal and maximum accuracy in all conditions, regardless of field location.





## PRECISE AND REPEATABLE AUTOMATED STEERING

**AFS AccuGuide** is a highly accurate auto guidance system designed to maintain parallel swaths with precision down to 1.5 cm. Choose from various guidance patterns including field, circle, curved, heading, spiral and straight.

- Fewer “skips” and “overlaps” for more precise planting, fertilizing and tilling
- Less compaction for higher yields
- Faster field speeds to reduce your time on the job
- Reduced operator stress and fatigue



## FULLY AUTOMATIC HANDS-FREE STEERING

Our **AFS AccuTurn Pro** technology combines headland management and headland steering processes. Turning radius, speed, and implement control when turning on headlands are automated and optimised, resulting in increased efficiency and improved comfort.

- Automation optimises headland turns and field layouts
- Improves the repeatability and the overall efficiency
- Minimises operator error and reduces fatigue



## AUTOMATIC HEADLAND TURNING

The **Headland Management Control II** system assists drivers when turning at the headland by allowing them to program each step by time or distance. It can also trigger other automated functions, such as lowering engine speed after lifting the implement.

- Automates workflows for less driver fatigue and higher productivity
- HMC II turns a repetitive manual task into an automated pinpoint process



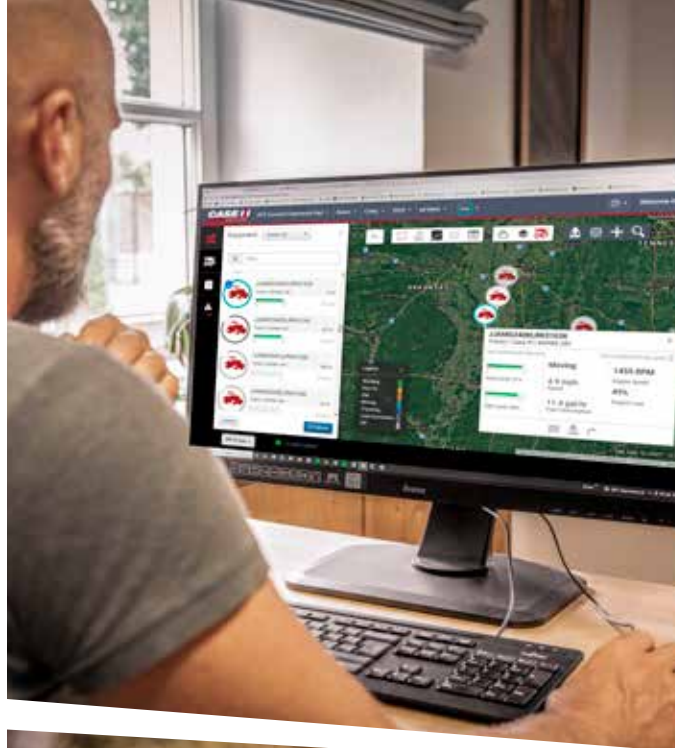
# THE NEXT LEVEL OF DIGITAL FLEXIBILITY

Discover a new way  
of farming!

AFS Connect is a farm management system that provides easy access to important farm data, optimising performance and productivity. It can be accessed from any computer or mobile device with a free MyCaseIH account.

Start to create a free MyCaseIH account and use the same login credentials to access the features of AFS Connect!

**MyCASE IH**



- Real-time overview map of your connected machines
- Access detailed performance values of your machines and create 7-day report
- Configure notifications (vehicle speeds, fuel level...) and receive them via web or text messages

## MANAGE YOUR FLEET

Maximise machine tracking  
capabilities you need to make  
the most of your time



## MANAGE YOUR FARM

Easily organise your fields,  
applications and agronomic data  
to gain better insights



- View field activity and generate coverage maps with multiple layers of agronomic data
- Push guidance lines, boundaries and prescriptions to equipment remotely

## AFS CONNECT FARM APP

View and monitor your equipment and field information in one place, all on your mobile device or tablet.





### DATA STORAGE

Store your data manually or automatically in a secured cloud platform, year after year, with no risk of losing them.

### DATA SHARING WITH TRUSTED PARTNERS

Securely share your data with agronomists and send subscriptions wirelessly to your connected vehicles.

### DATA SHARING & BACK-UP BETWEEN YOUR FLEET

Share real-time data (coverage maps and A/B guidance lines...) across Case IH vehicles in the same field for a fully connected operation.



### MANAGE YOUR DATA

Store and share data securely to facilitate administration and get tailored prescriptions



### SUPPORT & SERVICE REMOTELY

Get proactive support from our technicians ready to handle any service issues remotely and faster than ever

### REMOTE DISPLAY VIEWING

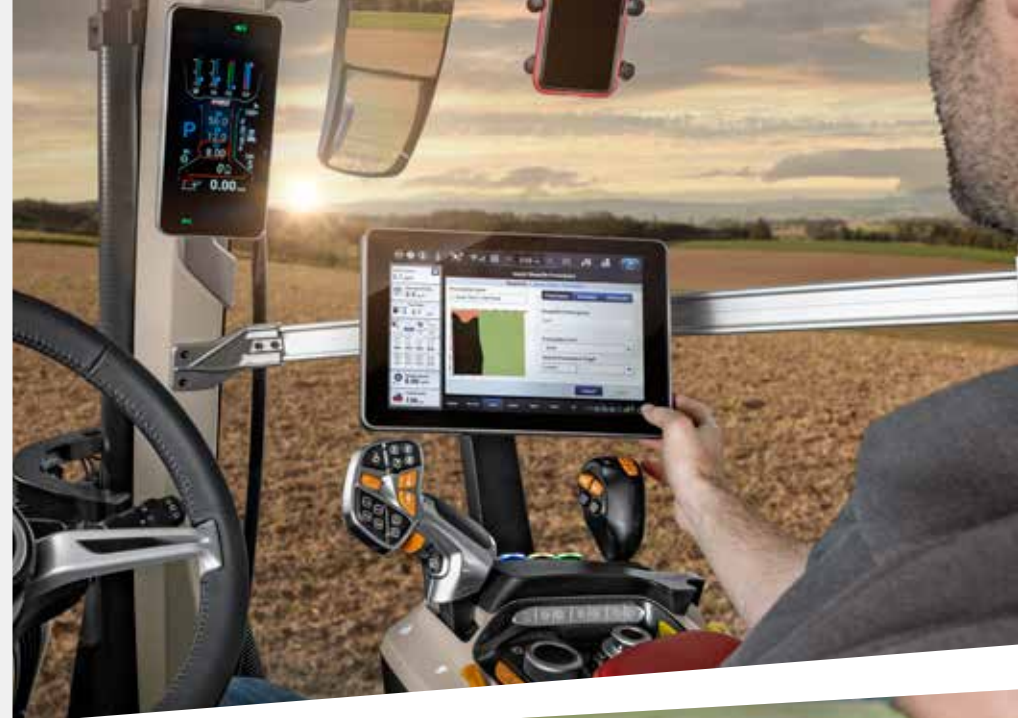
No matter where they are, a farm manager or dealer can easily see exactly what the operator is seeing on the screen in the tractor cab.

### REMOTE SERVICE SUPPORT

There's no time for downtime. Now, you can work with your local Case IH dealer to remotely diagnose maintenance and service issues and identify the parts you need to stay up and running.

### FIRMWARE OVER THE AIR (FOTA)

Your dealer can update your operating firmware wirelessly, giving you the advantage of new features, functionality and enhancements.





# THE NEXT LEVEL OF COMFORT

## Unmatched silence in the cab

Get ready for a premium 360-degree experience and a unique farming experience.

### IT ALL STARTS FROM THE GROUND

The wider cab steps are fully integrated into the fuel tank design, taking the form of a real staircase for more comfort and safety to jump in/off.

### +8 % ENLARGED CAB

The enlarged cab and larger frames enable more legroom as well as ample storage capacity, including a 20-litre cooled compartment under the passenger seat.

### +11 % GLASS AREA

Enjoy an unobstructed view around you and of your implements.

### +50 % QUIETER

With only 66 dB(A), the Puma AFS Connect is one of the quietest tractors on the market. Acoustics contributes to reduce stress and fatigue at the end of a long working day.

### CUSTOMIZE YOUR RIDE COMFORT

Different cab suspensions are available to bring the comfort you need: mechanical, semi-active or the Advanced Vehicle Suspension system (more in page 22).

### DETAILS THAT MAKE THE DIFFERENCE

- Automatic AC and heated with ideal 360° air repartition
- Electronically-telescoping mirrors that can be adjusted in-cab
- De-frosting electrical mirrors
- Multiple electrical outlets and USB charging points to keep your electronic devices charged
- Smartphone holder to always keep an eye on notifications
- Key fob for keyless operation and an engine start button
- Premium sound system











# THE NEXT LEVEL OF CUSTOMISATION

Everything in control

The AFS Pro 1200 monitor maximises control and automation in the cab. With just a few touches, operators can view and fine-tune most machine functions. Each driver can configure and save submenu and shortcut options to suit their needs.

## THE AFS PRO 1200 MONITOR

- 12" size
- Anti-fingerprint coating
- Bluetooth® pairing with mobile phone
- Ambient light sensor
- Multi-touch screen
- USB port

## EXCLUSIVE ENCODER KNOB

The integrated encoder allows an easy navigation and an accurate AFS monitor set-up under harsh field condition.



## PERSONALISE YOUR WORKING SCREEN

Easily customise your run screens with seven nameable options, giving you the freedom to choose which information to display.



## CUSTOMIZE YOUR EXPERIENCE

Choose from over 100 functions to assign to eight freely-programmable keys.



## CONFIGURE AUXILIARY BUTTONS

Assign implement functions according to individual preferences or implement requirements thanks to AUX-N capability.



## THE NEXT LEVEL OF VERSATILITY

The hydraulic layout of a tractor plays a crucial role in the daily routine of hitching and unhitching implements. With the latest ISOBUS standards and a variety of hitches and remote valves, Puma tractors facilitate the efficient use of large implements, easily and safely.

### PULL ANY IMPLEMENT YOU NEED

The Puma AFS Connect is equipped with a wide slider with choice of different hitch inserts to meet any needs like [\[market to give 2 examples of most sold locally\]](#). Drawbar can be specified either in cat. II, cat. III or with the HD K80 ball-type hitch extension.

### QUICK AND EASY HITCHING/SWITCHING

The new design of pressure-release couplers makes the daily work of attaching and removing implements even faster and more comfortable. Colour-coded inlet and outlet sides prevent errors in attaching the implements.

### CONFIGURABLE CONTROL SWITCHES

Use the high definition AFS Pro 1200 monitor to assign four remote valves to hot keys on the Multicontroller, or to the electrical joystick. The backlit toggle switches change colour depending on which remote valve has been assigned to them.



**SHORTCUT KEYS BRING YOU DIRECTLY TO THE SETTINGS MENU TO CONFIGURE YOUR REMOTE VALVES.**





### SUCCESS UNDER PRESSURE

A Power Beyond connection is available for implements with a load sensing controller. The machine is also provided with an unpressurised return line.

### ISOBUS CLASS III – AEF CERTIFIED

ISOBUS allows compatibility and connectivity between displays, tractors, and implements, regardless of brand. The plug-and-play capability ensures greater flexibility for your mixed fleet.

### HIGHER PRODUCTIVITY WITH TIM

The new AEF TIM (Tractor Implement Management) module allows the implement to automatically manage certain tractor functions and operating parameters (ground speed, lift, PTO...). This enhances the quality, efficiency, and driver experience of the entire process, resulting in increased productivity and easier operation for users.



**ISOBUS ALLOWS TO SET UP AND VISUALIZE DATA FROM MULTIPLE EQUIPMENT DIRECTLY FROM THE AFS PRO 1200.**



# THE NEXT LEVEL OF PERFORMANCE



## Strength without compromise

**Our engineers have achieved what you wished for: power, compact design, low cost of ownership, performance under tough conditions, and environmental compatibility.**

### THE MOST POWERFUL PUMA EVER

The Puma AFS Connect boasts a 6.7 L NEF engine with HI-eSCR2 tech for Stage V compliance. The flagship Puma 260 CVXDrive delivers 302 hp and impressive fuel efficiency.

### IMPRESSIVE POWER BOOST

All models benefit from an innovative power management system that provides up to 30 hp extra power when transporting heavy loads or moving at higher speeds.

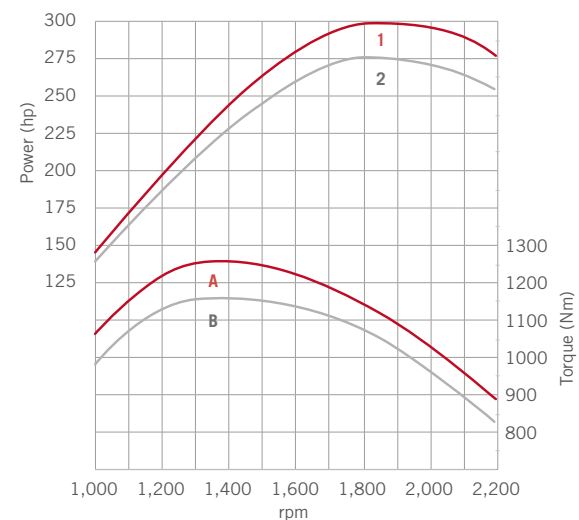
### ADVANCED ENGINE CHARACTERISTICS

The electronically controlled Variable Geometry Turbocharger (eVGT) system ensures optimal combustion, resulting in improved torque and fuel efficiency. This, combined with a superior torque rise of 46 % and a wide constant performance range, makes even the most challenging situations easy to handle.

### ENVIRONMENTALLY FRIENDLY

Hydro-treated vegetable oil, or HVO, is a biosynthetic diesel that is fully compatible with the Stage V FPT engine. Combined with extended service intervals and biodegradable transmission oil, HVO compatibility cements the Puma's eco-credentials.

PUMA 260 CVXDRIVE



Curves 1 and A with Power Management  
Curves 2 and B without Power Management



# CVXDRIVE TRANSMISSION

For those who demand maximum versatility

PUMA 185 - 200 - 220 - 240 - 260

## MORE EFFICIENCY

The APM system automatically selects the most suitable engine speed and gearbox ratio combination to perform the task at hand, at the same time optimising fuel consumption and power efficiency.

Added to that, the Case IH double-clutch technology results in less torque interruption, making this transmission more suited for power-hungry tasks where momentum is important.

## PRODUCTIVITY

Uninterrupted power to the ground delivers the exact speed for any operation with full flexibility during transport.

## EASY-TO-USE

Stepless operations concept with automatic range change: ideal for inexperienced or seasonal operators.

## SETTINGS ON THE GO

You can easily customize your transmission settings directly from the AFS Pro 1200 monitor

- Acceleration / deceleration
- Shuttling speed
- Drive pedal behaviour
- Overdrive / Speed control



# POWERDRIVE TRANSMISSION

Efficient power for your traction activities

PUMA 185 - 200 - 220

## SMOOTH RIDE

Shifting through all gears without torque interruption allows up to 20 % faster acceleration with each gear change.

## OPERATOR COMFORT

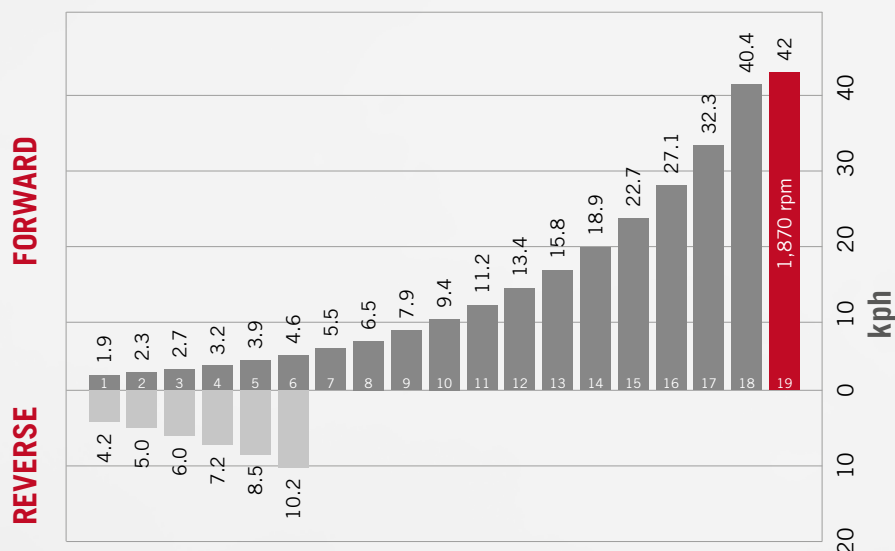
Right hand power shuttle or dedicated buttons on the Multicontroller allow direction changes without releasing the steering wheel.

## FOR SENSITIVE TASKS

The optimal number of gears are available with no clutching or torque interruption in the crucial 2.5 kph to 14 kph working range.

PowerDrive is available in:

- 40 kph ECO @ 1,870 engine rpm
- 50 kph @ 2,200 engine rpm



Max. speed 19 x 6 PowerDrive full powershift transmission 40 kph ECO



## THE NEXT LEVEL OF PRODUCTIVITY

Every detail carefully designed

Transmitting power efficiently is the key to tractor performance. Puma tractors feature larger axles to transfer more power, bigger tyres for greater traction and high hydraulic capacities to handle the heaviest implements.

**15 t  
GVW**

An engine side frame and bigger axles allow a gross vehicle weight of 15 t, ideal for handling the heaviest attachments and improving draft performance.

**170 l/min  
FLOW RATE**

Puma tractors are fitted with high performance hydraulic pumps with flowrates of up to 170 l/min to run with the heaviest implements.





## **+18 % FOOTPRINT**

The latest VF technology with 2.05 m rear tyres makes sure the Puma 260, 240 or 220 converts more tractive power into draft work without compacting the soil.

## **LIFTING CAPACITY**

### **10,400 KG REAR LIFT CAPACITY**

Easy to switch between Cat. II and Cat. III

### **6,000 KG FRONT LIFT CAPACITY**

Choice of stabilizers (telescopic, automatic and hydraulic)

## **1,000 RPM FRONT PTO**

The 1,000 rpm speed allows maximum productivity to be maintained in dense forage. Combined with the reversible eco-fan, you ensure full productivity.

## **4 REAR PTO SPEEDS**

4 speeds are offered as standard for maximum versatility. The 540E and 1,000E are reached at less than 1,600 rpm for improved fuel efficiency.

# THE NEXT LEVEL OF SAFETY

To protect what matters most

## UNIQUE ADVANCED VEHICLE SUSPENSION (AVS)

Thanks to the clever suspension software, the tractor's front axle, semi-active cab suspension and rear linkage react instantly to changes in terrain. This system reduces operator fatigue on longer working days and, importantly, protects the vehicle and implement.

## SAFE AND STRESS-FREE WORK

Active hold control is always a standard feature. It automatically prevents the tractor from rolling on slopes, without needing to activate brakes or clutch. To continue forward, simply push the Multicontroller forward.



SYNCHRONIZED  
REAR HITCH DAMPING

SYNCHRONIZED  
CAB DAMPING

SYNCHRONIZED  
FRONT AXLE DAMPING

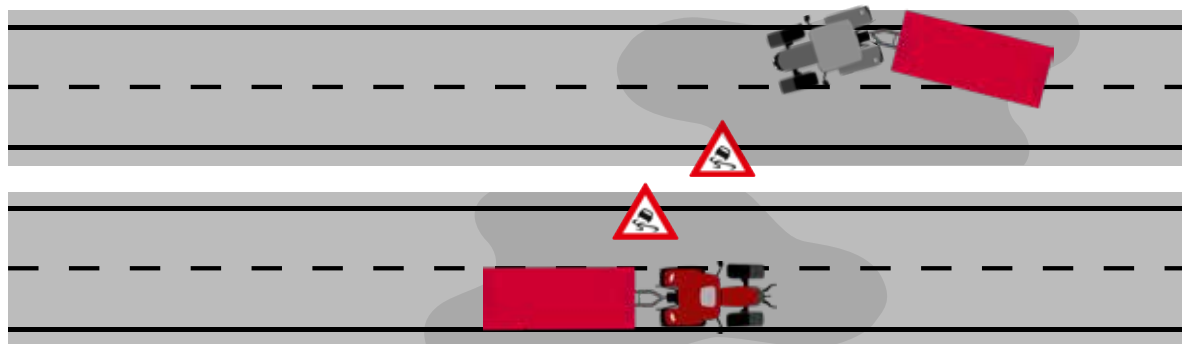


WATCH THE  
ADVANCED VEHICLE  
SUSPENSION  
VIDEO HERE!





#### WITHOUT ADVANCED TRAILER BRAKE SYSTEM



#### WITH ADVANCED TRAILER BRAKE SYSTEM

#### FEEL SECURE WITH YOUR HEAVY TRAILED EQUIPMENT

The Advanced Trailer Brake enhances safety, as the patented system actively recognises driving situations and changes to the load on the flywheel – followed by stabilising the tractor through pulsed activation of pneumatic trailer brakes. When decelerating either by pulling back the Multicontroller or using the brake pedal, the system keeps the combination stable and in line.



### 24-HOUR WORKING LIGHTING POWER

The 24-LED light package delivers a 360° illumination area with a specific long-range lights so that you can work in perfect safety with a wide implement even at night. Two configurable memories can have any lights assigned to them to quickly switch light patterns, from left to right for example.

### FOLLOW ME HOME

Enter or exit the cab safe in dark conditions with this function which allows several lights (configurable in the monitor) to stay on after key-off.



THE ICONS ON ALL SWITCHES ARE BACKLIT  
WHEN THE HEADLIGHTS ARE ON.



# THE NEXT LEVEL OF ENDURANCE

Keep performance up no matter what

**We know that time is critical in this business. We have designed Puma AFS Connect tractors with longer run-to-fill time features and quick daily maintenance to reduce your costs and machine downtimes.**

## UP TO 3 EXTRA WORKING HOURS

The bigger fuel tank of 460 l (395 l previously) and the 54 l AdBlue capacity means longer intervals between refuelling. This allows Puma to work longer without stopping up to 3 hours longer depending on the workload.

- Time and labour savings for the farm fuel truck
- Easier to plan supporting tractors in the field

## 50 % LONGER SERVICE INTERVALS THAN THE COMPETITION

The patented HI-eSCR2 system boasts industry-leading service intervals of 750 hours, letting you operate your machinery longer. The maintenance-free solution eliminates the need for SCR component cleaning or filter replacement during the system's entire lifecycle.

- 750 hours for the main service interval
- 1,500 hours for the transmission

## COST-EFFECTIVE ROUTINE MAINTENANCE

When you run a Puma, daily checks and regular maintenance are easy and quick, getting you in the field faster and home sooner.

- Ground-level fluid checks
- Battery compartment close at hand with including jump start connector
- Convenient access to filters
- Easy access to the right-hand side of the cab with ladder and platform

## STAY COOL TO SAVE FUEL AND TIME

The Puma comes equipped with an adjustable fan that can reverse air flow to clean the cooling unit. Optimal engine cooling enables significant fuel savings as well as contributing to extend the life of your machine.





# THE NEXT LEVEL OF AFTERWORK ROUTINE

Smart ideas to simplify your life

We at Case IH strive to innovate and provide solutions that enhance your productivity. Our newest Puma AFS Connect is designed with smart features that streamline your workload and offer long-term cost savings.

## EXCLUSIVE INTEGRATED AND LOCKABLE TOOLBOX

Located beside the cab steps, the fuel tank is designed to accommodate the storage of a large toolbox on rails for easy and safe handling

- Store essentials for on-the-go adjustments without leaving the field
- Located at ground level for easy access
- Lockable with a key for peace of mind
- Keep your cab clean and tidy

## EXCLUSIVE HAND-WASHING WATER TANK

Provided right below the toolbox is a 5-litre water tank which can easily be removed for refills.

- Wash your hands wherever you are and keep your cab clean

## SECONDARY OUTSIDE LOCKABLE STORAGE

You can store even more tools or accessories in a built-in upper storage area, which is also lockable. Easy to access and with enough space for items such as a grease pump or the coupling ball joints to keep your cab tidy.

## EASY CLEANING ROUTINE

Two compressed air nozzles, one right below the cab door and one at the back next to the hydraulic outlets allow easy 360° cleaning of the tractor and your implements without struggling with the hose.







## **SAFE***GUARD* WARRANTY

### **PROTECTED FOR 3 YEARS**

Extend your warranty for two more years: SAFEGUARD WARRANTY allows you to protect your investment from exposure to risk of unexpected repair cost. Harvest with peace of mind, keep operating cost under control and, at same time, increase machine resale value.

**UP TO  
+12 %  
INCREASED  
RESELL  
VALUE**

## **OPERATOR** *TRAINING*

### **KNOWLEDGE IS POWER**

Unleash the full potential of your machine: Reach maximum performance and avoid an improper use of your new Case IH machine. Our professional training for operators delivered by your Case IH Dealer focuses on the new functionalities of your machine.

**INCREASE  
OPERATOR  
SAFETY AND  
PERFORMANCE**

## **PRE-SEASON** *CHECK*

### **PEACE OF MIND FOR 3 YEARS**

The Case IH dealer technicians offer a Pre-Season Check to keep your machines in good shape and prevent downtime. The inspection covers over 100 checkpoints, and the technician will suggest ways to optimize machine performance based on the history report data.

MAXIMIZE MACHINE USE,  
PREVENT DOWNTIME  
**SAVE UP TO  
€ 15/HA**

# **SAFE***GUARD*

**PROTECT YOUR INVESTMENT,**





# CONNECT

## ENHANCE YOUR PRODUCTIVITY

Increase uptime and keep your costs to an absolute minimum

This Case IH service package includes the professional services you need to help you reach the full potential of your Case IH machine.

**REPAIRS  
PERFORMED  
UP TO 50%  
FASTER**

### MAXSERVICE

#### 3 YEARS OF ALL AROUND SUPPORT

Reduce downtime to a minimum: Get support around the clock in your busiest season and in close partnership with the dealer network. Take advantage of priority shipment of needed parts (24/7), in-field support by Case IH technicians and courtesy units wherever possible.

**SAVE  
UP TO 3 %  
FERTILIZER**



#### 5 YEARS OF AFS CONNECT

Use precision farming data and manage your fleet: the AFS Connect app provides you with information about recent operations and lets you monitor machine status. Adapt in-field precision farming AB lines at any time so that all machines will follow the same lines every season.

TELEMATICS ALERTS  
**SAVE UP  
TO 5 REPAIR  
HOURS**



#### CONNECT ROOM: YOUR PIT CREW

Connect Room continuously monitors machines, proactively identifies potential issues, and alerts dealers for quick help, maximising productivity and minimising downtime.

MODELS	PUMA 185 MULTICONTROLLER	PUMA 200 MULTICONTROLLER	PUMA 220 MULTICONTROLLER	PUMA 185 CVXDRIVE	PUMA 200 CVXDRIVE	PUMA 220 CVXDRIVE	PUMA 240 CVXDRIVE	PUMA 260 CVXDRIVE
<b>ENGINE</b>								
Number of cylinders / Capacity [cm <sup>3</sup> ]	6 / 6,700			6 / 6,700				
Type / Emission level	Common Rail Diesel engine, turbocharger and HI-eSCR2 only exhaust after treatment / Stage V			Common Rail Diesel engine, turbocharger and HI-eSCR2 only exhaust after treatment / Stage V				
Rated power ECE R120 <sup>1)</sup> [kW/hp(CV)]	132 / 180	147 / 200	162 / 220	132 / 180	147 / 200	162 / 220	177 / 240	191 / 260
... at engine speed [rpm]	2,200	2,200	2,200	2,200	2,200	2,200	2,200	2,200
Maximum power ECE R120 <sup>1)</sup> [kW/hp(CV)]	147 / 200	162 / 220	176 / 239	147 / 200	162 / 220	176 / 239	191 / 260	205 / 281
... at engine speed [rpm]	1,800	1,800	1,800	1,800	1,800	1,800	1,800	1,800
Maximum power ECE R120 <sup>1)</sup> Power Management <sup>2)</sup> [kW/hp(CV)]	165 / 224	180 / 245	191 / 260	165 / 224	180 / 245	191 / 260	199 / 271	222 / 302
... at engine speed [rpm]	1,800	1,800	1,800	1,800	1,800	1,800	1,800	1,800
Maximum torque [Nm @ 1,500 rpm]	942	1,038	1,101	942	1,038	1,101	1,159	1249
Torque rise [%]	44	45	44	44	45	44	40	39
Fuel tank capacity, diesel / urea [litres]	470 / 54			470 / 54				
<b>TRANSMISSION</b>								
CVXDrive continuously variable transmission 50 kph or 40 kph ECO	–			●				
PowerDrive 19x6 full powershift 40 kph ECO @ reduced rpm	○			–				
PowerDrive 19x6 full powershift 50 kph	○			–				
Powershuttle	●			●				
Creeper	○			–				
Rear axle diff-lock type	Multi disc wet plate with management system			Multi disc wet plate with management system				
Service brake	Hydraulically operated multiple wet disc brake, self adjusting			Hydraulically operated multiple wet disc brake, self adjusting				
<b>POWER TAKE OFF</b>								
Type	Shiftable with progressive electro-hydraulic engagement. Auto-PTO optional			Shiftable with progressive electro-hydraulic engagement. Auto-PTO optional				
4 speeds	540 / 540E / 1,000 / 1,000E			540 / 540E / 1,000 / 1,000E				
... at engine speeds [rpm]	1,931 / 1,598 / 1,912 / 1,583			1,931 / 1,598 / 1,912 / 1,583				
Shaft type Standard (Option)	1 3/8" 21 splines or 1 3/8" 6 splines			1 3/8" 21 splines or 1 3/8" 6 splines				
<b>FRONT PTO AND FRONT HITCH</b>								
Front PTO 1,000 speed @ engine rpm	1,886			1,886				
Front hitch max. lift capacity [kg]	6,220			6,220				
<b>FOUR-WHEEL DRIVE AND STEERING (DRIVELINE)</b>								
Type	Electro-hydraulic with management system, differential lock as standard			Electro-hydraulic with management system, differential lock as standard				
Active front axle suspension	○			○				
ABS Anti-lock braking system	–			○				
Min. turning radius <sup>3)</sup> track setting 1,829 mm [m]	5.9			5.9				
<b>HYDRAULIC SYSTEM</b>								
System type	Variable displacement, pressure flow compensated pump			Variable displacement, pressure flow compensated pump				
Max. pump flow rate Standard (Option) / System pressure	120 l/min (150 l/min) / 210 bar			150 l/min (170 l/min) / 210 bar				
Control type	Electronic Hitch Control (EHC) with cushion ride control			Electronic Hitch Control (EHC) with cushion ride control				
Max. lift capacity [kg]	10,464			10,464				
OECD lift capacity through range @ 610 mm [kg]	7,280			7,280				
Max. number of rear remote valves	4 mechanical or 5 electrical			5 electrical				
Max. number of mid mount valves with electronic joystick	3 electrical			3 electrical				
Remote valve timer control	1 - 60 seconds on all models			1 – 60 seconds on all models				
Category type	Cat II-III quick adjust			Cat II-III quick adjust				
Slip control	●			●				



MODELS	PUMA 185 MULTICONTROLLER	PUMA 200 MULTICONTROLLER	PUMA 220 MULTICONTROLLER	PUMA 185 CVXDRIVE	PUMA 200 CVXDRIVE	PUMA 220 CVXDRIVE	PUMA 240 CVXDRIVE	PUMA 260 CVXDRIVE
<b>STANDARD TYRES <sup>4)</sup></b>								
Standard front tyre size		600/65 R28			600/65 R28			600/70 R30
Standard rear tyre size		650/65 R42			650/65 R42			710/70 R42
Maximum rear tyre size		Group 47		Group 47		Group 48		
<b>WEIGHT / DIMENSIONS <sup>3)</sup></b>								
Approximate shipping weight standard / suspended front axle [kg] <sup>3)</sup>		8,625 / 9,550			8,625 / 9,550			
Maximum permissible total weight [kg]		13,650		14,400		15,000		
A: Max. length with front and rear lower links downstandard / suspended front axle [mm]		5,398 / 5,517			5,467 / 5,467			
B: Total height [mm]		3,314		3,314		3,367		
C: Minimum width across rear fenders (narrow / wide type fender) [mm]		2,550 / 2,750			2,550 / 2,750			
D: Wheel base standard / suspended front axle [mm]		2,884 / 2,884			2,884 / 2,884			
E: Height at centre of rear axle, highest point cab [mm]		2,339			2,339			
F: Track setting front / rear [mm]		1,560-2,258 / 1,530-2,240			1,544-2,276 / 1,530-2,240			

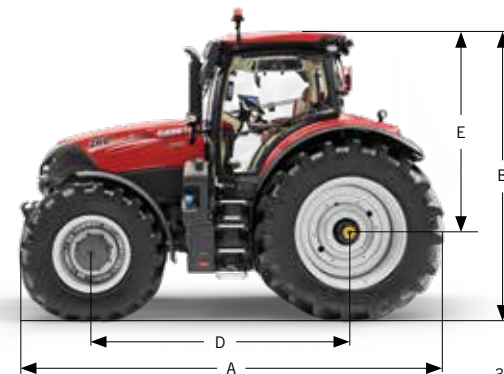
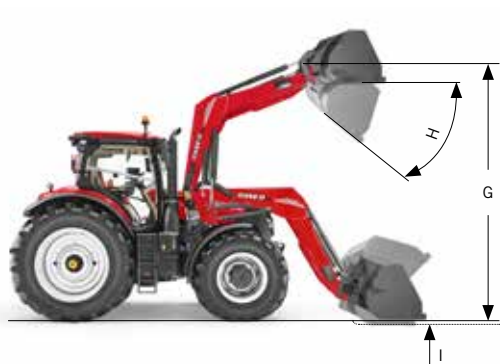
● Standard Equipment ○ Optional Equipment — Not available

<sup>1)</sup> ECE R120 correspond to ISO 14396 and 97 / 68 / EC <sup>2)</sup> Power Management is only available during hydraulic, mobile PTO and haulage applications

<sup>3)</sup> With standard tyres <sup>4)</sup> Other tyres on request <sup>5)</sup> Weight can vary according to tractor configuration


COMPATIBLE FRONT LOADER	L4727T
Self-levelling type	Hydraulic self-levelling
Loader working pressure [bar]	210
<b>LIFT HEIGHT / WORKING ANGLE / DIGGING DEPTH</b>	
G: Maximum lift height at implement pivot pin <sup>1)</sup> [mm]	4,680
H: Maximum dumped angle <sup>1)</sup> [°]	55
I: Digging depth <sup>1)</sup> [°]	172
<b>LIFTING CAPACITY</b>	
Lift capacity to maximum height - at load gravity center <sup>1)</sup> [kg]	2,626
Lift capacity to 1.5 m height - at load gravity center <sup>1)</sup> [kg]	3,424
Breakout force at load gravity center <sup>1)</sup> [kg]	3,582
Bucket rollback force at maximum height <sup>1)</sup> [kg]	3,083
Bucket rollback force at ground level <sup>1)</sup> [kg]	3,147

<sup>1)</sup> According to ASABE S301.5





     
**caseih.com**

 Free phone: 00 800 22 73 44 00

Safety never hurts! Always read the Operator's Manual before working with any equipment. Inspect equipment before using it, and be sure it is operating properly. Follow the product safety signs, and use any safety features provided. This literature has been published for worldwide circulation. The standard and optional equipment and the availability of individual models may vary from one country to the next. Case IH reserves the right to undertake modifications without prior notice to the design and technical equipment at all times without this resulting in any obligation whatsoever to make such modifications to units already sold. Whilst every effort is made to ensure that the specifications, descriptions and illustrations in this brochure are correct at the time of going to press, these are also subject to change without prior notice. Illustrations may show optional equipment or may not show all standard equipment. Case IH recommends **AKCELA** lubricants.

TP01 / SM / 04.23 / Printed in Austria - Cod.No. 23C0012COMINB

**CASE IH**