

E60C

COMPACT EXCAVATOR

TIER 4 FINAL



Engine	
Model	Yanmar 4TNV98C
Emission certification	Tier 4 Final
Fuel	Diesel
Cylinders	4
Displacement	203 in. ³ (3319 cc)
Fuel Injection	Electronic common rail
Gross horsepower	SAE J1995 @ 2200 RPM: 64.7 hp (48.3 kW)
Net horsepower	SAE J1349 @ 2200 RPM: 63 hp (47 kW)
Maximum engine torque @ 1560 RPM	173.6 lb. ft. (235.4 Nm)
Cooling	Water-cooled

Drivetrain	
Travel speeds:	
1st	1.4 mph (2.2 kph)
2nd	2.5 mph (4.0 kph)
Maximum traction force	11,680 lb. (5300 kg)
Gradeability	35° (70%)
Ground pressure	5.12 psi (0.36 kgf/cm ²)

Electrical	
Voltage	12 Volts
Alternator rating	80 amp
Battery	1 x 12 V x 100 Ah 850 CCA

Operator Weight	
Canopy operating weight:	
Short arm	12,940 lb. (5870 kg)
Long arm w/additional counterweight	13,430 lb. (6090 kg)

NOTE: w/rubber tracks/no quick coupler/bucket/fluids/full of fuel/165 lb. operator.

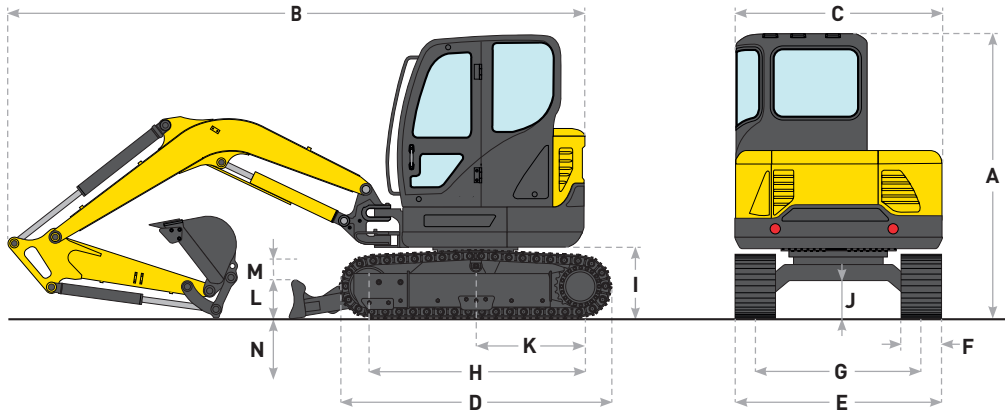
Operator Environment	
Enclosed cab w/heat and air conditioning; ISO 6396:2008 sound pressure level LpA=77dB (A); Pilot operated hand controls and foot pedals; Adjustable seat w/seat belt and seat heater; Arm rests; 12V socket; 5.7 in color LCD display; cup holder; Cell phone holder; Bluetooth radio with USB input, 2 speakers and remote control.	
Display includes: Hydraulic oil temp warning lamp; Air cleaner warning lamp; Engine stop warning lamp; Check engine warning lamp; Water in fuel warning lamp; Battery charging warning lamp; Emergency warning lamp; Engine coolant temp warning lamp; Engine oil pressure warning lamp; DPF regeneration inhibit warning lamp; DPF regeneration acknowledge warning lamp; DPF warning lamp; High Exhaust Temperature warning lamp; Low fuel level warning lamp Engine coolant temperature gauge; Hydraulic oil temperature gauge; Fuel gauge; Engine RPM and Hour meter.	

Service Capacities	
Fuel tank	21.7 gal. (82 L)
Hydraulic tank:	
Refill capacity	15.9 gal. (60 L)
Total system	29.1 gal. (110 L)
Engine oil w/filter change	3.1 gal. (11.6 L)
Radiator	2.9 gal. (11 L)

Other Specifications	
Swing speed	0 – 8.8 RPM
Undercarriage:	
Track rollers	1 upper / 5 lower each
Boom:	
Swing	70° left/50° right
Length	9 ft. 6 in. (2.9 m)
Arm:	
Standard length	4 ft. 10 in. (1.48 m)
Long arm length	6 ft. 3 in. (1.9 m)

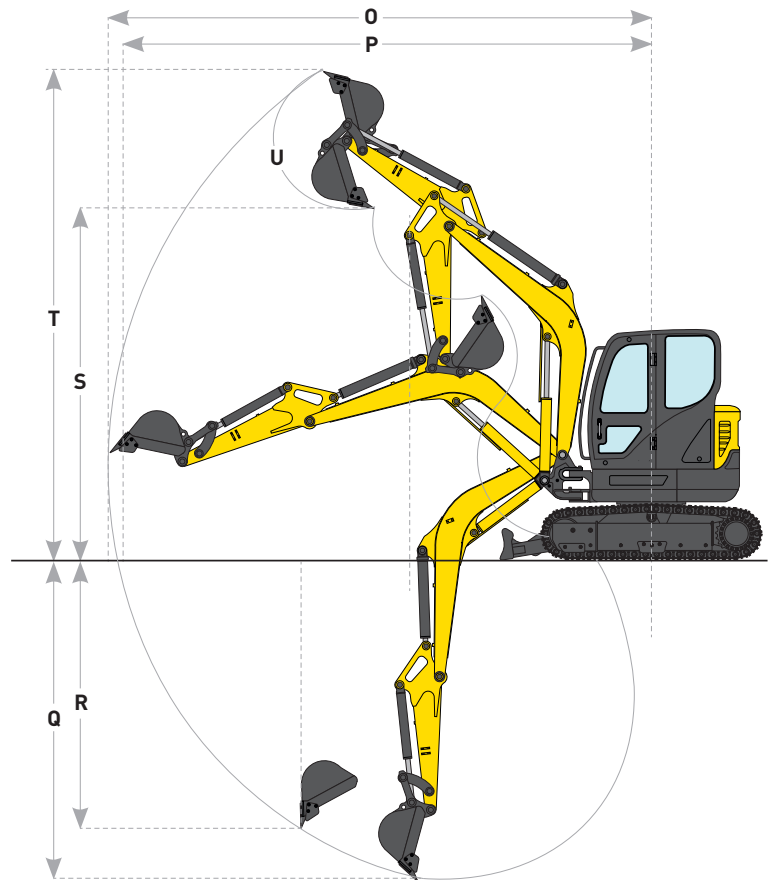
Hydraulics	
Main pumps: Variable displacement tandem axial piston pump	
Max rated flow	2 x 14.5 gpm (2 x 55 L/min)
Auxiliary flow	
Hammer circuit 1-way:	
Flow	14.5 gpm (55L/min)
Pressure	3132 psi (216 bar)
1st aux 2-way circuit:	
Flow	14.5 gpm (55L/min)
Pressure	3132 psi (216 bar)
2nd aux 2-way circuit:	
Flow	14.5 gpm (55L/min)
Pressure	3132 psi (216 bar)
Pilot control hydraulic system:	
Pump	Gear pump
Maximum capacity	2.4 gpm (9 L/min)
Control valves: Pilot control for left/right track travel, boom, arm, bucket and swing Manual control for breaker and backfill blade	
Swing motor: Fixed displacement axial piston motor Automatic spring applied hydraulic released brake	
Travel motor: Variable displacement axial piston 2-stage planetary Automatic spring applied hydraulic released brake	

E60C SPECIFICATIONS



Dimensions		4 ft. 10 in. (1.48 m) Arm	
A	Overall height	ft. in. (mm)	8' 4" (2550)
B	Overall transport length	ft. in. (mm)	18' 3" (5600)
C	Width of upper structure	ft. in. (mm)	6' 4" (1940)
D	Track overall length	ft. in. (mm)	8' 4" (2550)
E	Track overall width	ft. in. (mm)	6' 6" (1990)
F	Track shoe width	in. (mm)	15 (380)
G	Track gauge	ft. in. (mm)	5' 3" (1600)
H	Center to center - idler to sprocket	ft. in. (mm)	6' 6" (1990)
I	Upper structure ground clearance	ft. in. (mm)	2' 2" (660)
J	Minimum ground clearance	ft. in. (mm)	1' 3" (380)
K	Tail swing radius:		
	Standard counterweight	ft. in. (mm)	3' 7" (1080)
	Additional counterweight	ft. in. (mm)	3' 9" (1138)
	Boom swing	degrees	70 left/50 right
	Tail swing overhang:		
	Standard counterweight	in. (mm)	3 (85)
	Additional counterweight	in. (mm)	6 (143)

Blade Specs			
L	Backfill blade height	ft. in. (mm)	1' 2" (350)
M	Backfill blade rise above ground	in. (mm)	8 (200)
N	Backfill blade dig depth	ft. in. (mm)	2' 4" (700)
	Backfill blade width	ft. in. (mm)	6' 7" (2010)



Performance Specs		4 ft. 10 in. (1.48 m) Arm		6 ft. 3 in. (1.9 m) Arm	
O	Maximum dig radius	ft. in. (mm)	20' 2" (6150)		21' 3" (6480)
P	Dig radius at groundline	ft. in. (mm)	19' 9" (6010)		20' 10" (6350)
Q	Maximum dig depth	ft. in. (mm)	11' 9" (3570)		13' 1" (3990)
R	Vertical straight wall dig depth	ft. in. (mm)	10' 0" (3040)		11' 0" (3360)
S	Dump height	ft. in. (mm)	12' 11" (3930)		13' 5" (4100)
T	Overall reach height	ft. in. (mm)	18' 8" (5680)		19' 2" (5850)
U	Bucket rotation	degrees	180		180
	Arm digging force - ISO	lbf (kgf/kN)	5950 (2700/26.5)		5035 (2280/22.4)
	Bucket digging force - ISO	lbf (kgf/kN)	9190 (4170/40.9)		9190 (4170/40.9)

Line drawings are for illustrative purpose only and may not be exact representation of unit

Lift Capacities E60C Standard Arm Lift

9 ft. 6 in. (2.9 m) Boom, 4 ft. 10 in. (1.48 m) Arm, Dozer Blade Down

Cab unit equipped with 0.18 m³ (SAE heaped) bucket, 15 in. (380 mm) rubber track and 1036 lb. (470 kg)

Load/Lift point height		Load Radius								At Maximum Reach		
		7 ft. (2.0 m)		10 ft. (3.0 m)		13 ft. (4.0 m)		16 ft. (5.0 m)		Reach ⊕	Capacity	
		end	side	end	side	end	side	end	side		end	side
+13 ft. (4.0 m)	lb. (kg)					2460* (1120)*	1990 (900)			13 ft. 10 in. (4.22 m)	1960* (890)*	1780 810
+10 ft. (3.0 m)	lb. (kg)					2590* (1180)*	1950 (880)			15 ft. 11 in. (4.86 m)	1880* (850)*	1330 (600)
+7 ft. (2.0 m)	lb. (kg)			4200* (1900)*	2990 (1360)	3150* (1430)*	1830 (830)	2740* (1240)*	1220 (550)	17 ft. 0 in. (5.18 m)	1960* (890)*	1130 (510)
+3 ft. (1.0 m)	lb. (kg)			5880* (2670)*	2680 (1220)	3810* (1730)*	1700 (770)	2990* (1350)*	1160 (530)	17 ft. 3 in. (5.25 m)	2210* (1000)*	1060 (480)
Groundline	lb. (kg)	3610* (1640)*	3610* (1640)*	6560* (2970)*	2540 (1150)	4230* (1920)*	1610 (730)	3110* (1410)*	1120 (510)	16 ft. 8 in. (5.09 m)	2700* (1230)*	1090 (490)
-3 ft. (-1.0 m)	lb. (kg)	6420* (2910)*	5250 (2380)	6290* (2850)*	2510 (1140)	4160* (1890)*	1580 (720)			15 ft. 3 in. (4.65 m)	3260* (1480)*	1250 (570)
-7 ft. (-2.0 m)	lb. (kg)	8530* (3870)*	5380 (2440)	5110* (2320)*	2570 (1170)					12 ft. 7 in. (3.83 m)	3510* (1590)*	1740 (790)

Lift Capacities E60C Long Arm Lift

9 ft. 6 in. (2.9 m) Boom, 6 ft. 3 in. (1.9 m) Arm, Dozer Blade Down

Cab unit equipped with 0.18 m³ (SAE heaped) bucket, 15 in. (380 mm) rubber track and 1477 lb. (670 kg) counterweight.

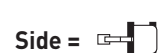
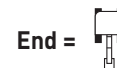
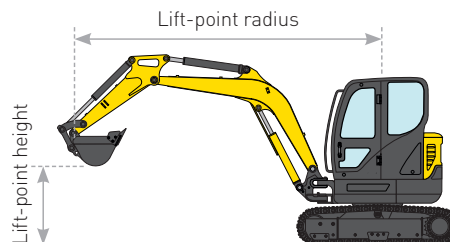
Load/Lift point height		Load Radius								At Maximum Reach		
		7 ft. (2.0 m)		10 ft. (3.0 m)		13 ft. (4.0 m)		16 ft. (5.0 m)		Reach ⊕	Capacity	
		end	side	end	side	end	side	end	side		end	side
+13 ft. (4.0 m)	lb. (kg)									15 ft. 5 in. (4.70 m)	1430* (650)*	1430* (650)*
+10 ft. (3.0 m)	lb. (kg)					2090* (950)*	2090* (950)*	2130* (960)*	1400 (640)	17 ft. 3 in. (5.27 m)	1380* (620)*	1250 (570)
+7 ft. (2.0 m)	lb. (kg)			3260* (1480)*	3260* (1480)*	2680* (1210)*	2040 (920)	2410* (1090)*	1350 (610)	18 ft. 3 in. (5.56 m)	1420* (650)*	1090 (490)
+3 ft. (1.0 m)	lb. (kg)			5140* (2330)*	3000 (1360)	3430* (1550)*	1880 (850)	2730* (1240)*	1270 (580)	18 ft. 6 in. (5.63 m)	1580* (710)*	1020 (460)
Groundline	lb. (kg)	3590* (1630)*	3590* (1630)*	6250* (2840)*	2770 (1260)	3990* (1810)*	1760 (800)	2980* (1350)*	1210 (550)	18 ft. 0 in. (5.48 m)	1880* (850)*	1030 (470)
-3 ft. (-1.0 m)	lb. (kg)	5480* (2490)*	5480* (2490)*	6370* (2890)*	2700 (1220)	4150* (1880)*	1700 (770)	2950* (1340)*	1190 (540)	16 ft. 8 in. (5.08 m)	2510* (1140)*	1160 (520)
-7 ft. (-2.0 m)	lb. (kg)	8080* (3670)*	5700 (2590)	5630* (2550)*	2730 (1240)	3680* (1670)*	1710 (780)			14 ft. 4 in. (4.36 m)	3140* (1420)*	1500 (680)
-10 ft. (-3.0 m)	lb. (kg)	6020* (2730)*	5960 (2700)	3460* (1570)*	2880 (1300)					9 ft. 11 in. (3.01 m)	3450* (1570)*	2870 (1300)

NOTE: Lifting capacity are based on ISO 10567.

Lifting capacity does not exceed 75% of tipping load with the machine on firm, level ground or 87% of full hydraulic capacity.

The lift point is a hook located on the back of the bucket.

*Indicates load limited by hydraulic capacity.



E60C STANDARD EQUIPMENT

Engine

Yanmar 4TNV98C
 Engine access under rear hood
 Glow plug starting aid
 Dry type air cleaner with restriction indicator

Electrical

12-volt electrical starting system
 Heavy-duty battery
 Battery master switch
 Key start
 Anti-Theft-Engine starting passwords
 Front and rear working light
 12 V power outlet
 Auto-idle feature with on/off switch
 Horn
 Pre-wired – Telematics ready

Hydraulics

Auxiliary hydraulics – independent single and bi-directional – and plumbing to arm
 Large hydraulic oil cooler
 Control pattern selector valve
 Cylinder rod protection cover – Boom

Track Drive

Rubber belt tracks
 Automatic 2-speed travel
 Fully hydrostatic drive system
 Sealed and lubricated track rollers
 Track tension adjustment – grease type

Upper Structure

Short radius tail swing
 Standard arm: 4 ft. 10 in. (1.48 m)
 Bucket linkage with lifting hook
 Thumb bracket

Operator Environment

See page 1

Other

Swing boom – 70° left/50° right
 Hydraulic backfill blade

Warranty

Base warranty coverage: 2-Year/3,000-Hour
 Full Machine Limited Warranty

E60C OPTIONAL EQUIPMENT

Operator Environment

Rearview camera
 Travel alarm

Track Options

Tracks:
 Steel Tracks 1 ft. 3 in. (380 mm)
 Steel Tracks 1 ft. 6 in. (450 mm)
 Steel Tracks with bolt on Rubber Pads
 1 ft. 4 in. (400 mm)
 Roadliner tracks – steel chain with rubber
 grousers/shoes 1 ft. 4 in. (400 mm)
 Rubber Belt Tracks 1 ft. 4 in. (400 mm)
 Track guides for steel tracks and steel tracks
 with bolt on rubber track pads only: 3-piece

Other

Additional counterweight adds 440 lb. (200 kg)
 Optional long arm: 6 ft. 3 in. (1.9 m)
 Hydraulic quick coupler provision
 Hydraulic coupler
 Klac coupler
 Mechanical coupler
 Hydraulic hammer
 Beacon
 2nd auxiliary circuit



New Holland Construction Equipment is biodiesel-friendly. NOTE: All engines meet current EPA emissions regulations. All specifications are stated in accordance with SAE Standards or Recommended Practices, where applicable.

Learn more at www.newholland.com

New Holland Construction
 500 Diller Ave.
 New Holland, PA 17557

www.newholland.com

Design, materials and/or specifications are subject to change without notice and without liability therefor. Specifications are applicable to units sold in Canada, the United States, its territories and possessions, and may vary outside these areas.

© 2021 CNH Industrial America LLC. All rights reserved. New Holland is a trademark in the United States and many other countries, owned by or licensed to CNH Industrial N.V., its subsidiaries or affiliates. Any trademarks referred to herein, in association with goods and/or services of companies other than CNH America LLC, are the property of those respective companies.



Safety begins with a thorough understanding of the equipment. Always make sure you and your operators read the Operator's Manual before using the equipment. Pay close attention to all safety and operating decals and never operate machinery without all shields, protective devices and structures in place. This is a one-person machine. Never allow riders in the cab, outside the machine, or in/on any bucket or attachment.

NHC7130219216 • 0921 • OTP • PRINTED IN U.S.A.