

HEAVY REACH, COMPACT GROUND PRESSURE.

CX120E LONG REACH

PRELIMINARY SPEC SHEET



Operating Weight	11.4 t
Max Reach	12 m
Max. Power	73 hp
Max dig depth	7.73 m

CASE
CONSTRUCTION



CERTIFIED SAFETY

Choose confidence with a fully O.E.M. CE-certified machine engineered to meet the highest safety standards. Unlike locally modified alternatives, our certification ensures compliance and protects you from liability in the event of an accident.

EASY TO TRANSPORT

With a width of just 2.32 m (standard tracks) or 2.67 m (800 mm LGP tracks), transport is simple and hassle-free. The short radius design also ensures smooth maneuvering in tight spaces.

WORKING ENVIRONMENT 5.0

- Step into a next-generation operator experience. Enjoy a premium seat and intuitive controls, featuring a 7" color display and jog shuttle for precise engine speed and auto-idle management.
- Equipped with E.O.C. the world's most advanced hydraulic system in its class you can fine-tune and store detailed attachment settings, a major advantage for demolition professionals using multiple tools.
- Additional smart features like an electric fuel pump, auto-stop function, powerful LED lighting, and more make every workday smoother, safer, and more efficient.

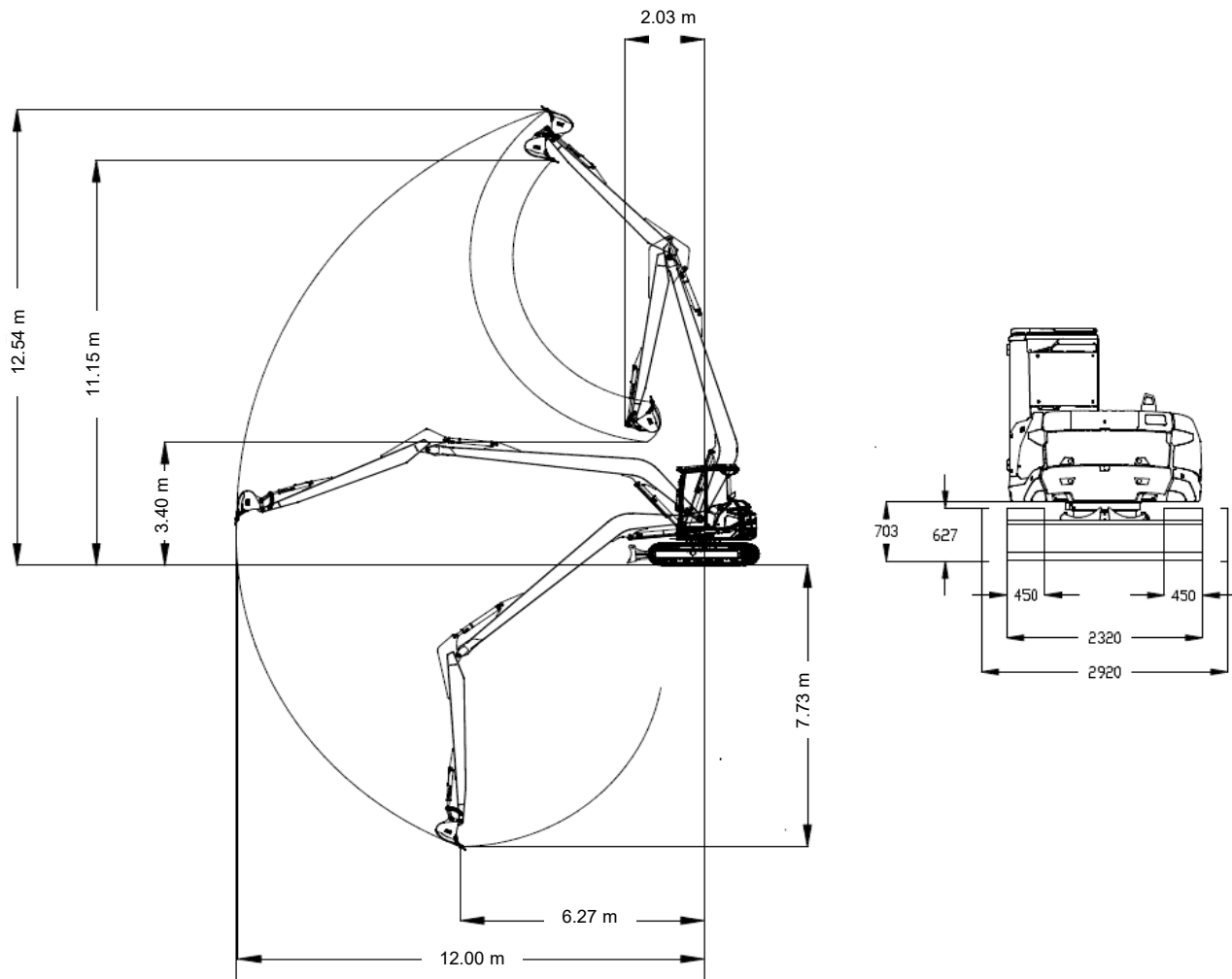
UNMATCHED PRODUCTIVITY

- Achieve more with industry-leading performance. With:
- an exceptional **reach of 12 meters**
 - a dig **depth of 7.73 meters** outperforming any machine in its class,
 - powerful lift capacities throughout the entire digging range,
 - plus Low Ground Pressure solutions and an optional additional pump to constantly power attachments such as mulcher or mowing bucket you can tackle more jobs and complete them faster.

Retractable undercarriage is available on demand (2,32-2,92m).



PRELIMINARY SPECIFICATIONS



ENGINE

4-cylinder, 3.3-litre Yanmar Stage 5. Liquid-cooled.
Maximum power @2100 rpm 73 hp / 54 kW

HYDRAULICS

eOC (electronic Open Center) system by Bosch Rexroth
1 electronic variable displacement pump + 1 gear pump
Pumps 100 + 14 cm³
Flow rate 192 + 27 lpm
Maximum pressure 290 bar
AUX 1 single/double action 100lpm, 200 bar
AUX 2 double effect 70-90lpm, 290 bar
AUX 3 double effect (opt) 50-50lpm, 250 bar
AUX1 Mulcher Provision (opt)
"Constant Flow" additional pump 62 lpm, 200 bar

PERFORMANCES

Max travel speed (2 automatic speeds) 1,8 - 3,5 km/h
Rotational speed 4,5 rpm

DIMENSIONS

Width 2,32 m
Height with FOPS level 2 guard 2,76m
Rear radius 1,22 m

Tracks width 0,45 m
Number of rollers on each side 5+1

CAPACITIES

Diesel 105 l
Hydraulic Oil 85 l
Hydraulic system 135 l
Cooling system 23 l
Engine Oil 10 l

TRANSPORT WEIGHT

with 450mm rubber tracks 11,0 t
with 450 mm steel tracks 11,4 t
with 600 mm steel tracks 11,6 t
with 800 mm steel tracks 11,8 t

OPERATING WEIGHT

with 450mm rubber tracks 11,4 t
with 450 mm steel tracks 11,8 t

LIFTING CAPACITY

Without attachments

450 mm tracks
+ Standard undercarriage (2.32 m width)

FRONT, BLADE DOWN							
	5m	6m	7m	8m	9m	10m	11m
>2m	3.3t	2.7t	2.3t	2.0t	1.8t	1.6t	1.4t
2m	3.4t	2.8t	2.4t	2.1t	1.8t	1.6t	1.4t
1m	3.5t	2.9t	2.4t	2.1t	1.8t	1.6t	1.4t
-1m	3.4t	2.8t	2.4t	2.1t	1.8t	1.6t	1.4t
-2m	3.3t	2.8t	2.3t	2.0t	1.7t	1.5t	1.3t
-3m	3.1t	2.6t	2.2t	1.9t	1.7t	1.4t	1.2t
-4m	2.8t	2.4t	2.0t	1.8t	1.5t	1.2t	
-5m	2.4t	2.1t	1.8t	1.5t	1.3t		
-6m	1.9t	1.7t	1.4t	1.2t			

SIDE							
	5m	6m	7m	8m	9m	10m	11m
>2m	1.5t	1.2t	0.9t	0.7t	0.6t	0.5t	0.4t
2m	1.4t	1.1t	0.9t	0.7t	0.6t	0.5t	0.4t
1m	1.2t	1.0t	0.8t	0.6t	0.5t	0.4t	0.4t
-1m	1.1t	0.9t	0.7t	0.6t	0.5t	0.4t	0.3t
-2m	1.1t	0.9t	0.7t	0.6t	0.5t	0.4t	0.3t
-3m	1.1t	0.8t	0.7t	0.6t	0.5t	0.4t	0.4t
-4m	1.1t	0.8t	0.7t	0.6t	0.5t	0.4t	
-5m	1.1t	0.9t	0.7t	0.6t	0.5t		
-6m	1.2t	0.9t	0.7t	0.6t			

800 mm tracks
+ Standard undercarriage (2.67 m width)

FRONT, BLADE DOWN							
	5m	6m	7m	8m	9m	10m	11m
>2m	3.3t	2.7t	2.3t	2.0t	1.8t	1.6t	1.4t
2m	3.4t	2.8t	2.4t	2.1t	1.8t	1.6t	1.4t
1m	3.5t	2.9t	2.4t	2.1t	1.8t	1.6t	1.4t
-1m	3.4t	2.8t	2.4t	2.1t	1.8t	1.6t	1.4t
-2m	3.3t	2.8t	2.3t	2.0t	1.7t	1.5t	1.3t
-3m	3.1t	2.6t	2.2t	1.9t	1.7t	1.4t	1.2t
-4m	2.8t	2.4t	2.0t	1.8t	1.5t	1.2t	
-5m	2.4t	2.1t	1.8t	1.5t	1.3t		
-6m	1.9t	1.7t	1.4t	1.2t			

SIDE							
	5m	6m	7m	8m	9m	10m	11m
>2m	2.1t	1.6t	1.3t	1.1t	0.9t	0.7t	0.6t
2m	1.9t	1.5t	1.2t	1.0t	0.8t	0.7t	0.6t
1m	1.8t	1.4t	1.1t	0.9t	0.8t	0.7t	0.6t
-1m	1.7t	1.3t	1.1t	0.9t	0.8t	0.6t	0.6t
-2m	1.7t	1.3t	1.1t	0.9t	0.7t	0.6t	0.6t
-3m	1.6t	1.3t	1.0t	0.9t	0.7t	0.6t	0.6t
-4m	1.7t	1.3t	1.0t	0.9t	0.7t	0.6t	
-5m	1.7t	1.3t	1.0t	0.9t	0.8t		
-6m	1.7t	1.3t	1.1t	0.9t			

On request: 450 mm tracks
+ Extendable undercarriage (2.92 m width)

FRONT, BLADE DOWN							
	5m	6m	7m	8m	9m	10m	11m
>2m	3.3t	2.7t	2.3t	2.0t	1.8t	1.6t	1.5t
2m	3.4t	2.8t	2.4t	2.1t	1.8t	1.6t	1.5t
1m	3.5t	2.9t	2.4t	2.1t	1.8t	1.6t	1.4t
-1m	3.4t	2.8t	2.4t	2.1t	1.8t	1.6t	1.4t
-2m	3.3t	2.8t	2.3t	2.0t	1.7t	1.5t	1.3t
-3m	3.1t	2.6t	2.2t	1.9t	1.7t	1.4t	1.2t
-4m	2.8t	2.4t	2.0t	1.8t	1.5t	1.2t	
-5m	2.4t	2.1t	1.8t	1.5t	1.3t		
-6m	1.9t	1.7t	1.4t	1.2t			

SIDE							
	5m	6m	7m	8m	9m	10m	11m
>2m	2.8t	2.2t	1.7t	1.4t	1.2t	1.0t	0.8t
2m	2.6t	2.0t	1.6t	1.4t	1.1t	1.0t	0.8t
1m	2.5t	1.9t	1.6t	1.3t	1.1t	0.9t	0.8t
-1m	2.4t	1.9t	1.5t	1.3t	1.1t	0.9t	0.8t
-2m	2.3t	1.8t	1.5t	1.2t	1.0t	0.9t	0.8t
-3m	2.3t	1.8t	1.5t	1.2t	1.1t	0.9t	0.8t
-4m	2.3t	1.8t	1.5t	1.2t	1.1t	0.9t	
-5m	2.4t	1.8t	1.5t	1.2t	1.1t		
-6m	1.9t	1.7t	1.4t	1.2t			



DESIGNED, PRODUCED AND CERTIFIED BY CASE IN EUROPE

Our Special Applications team based in Italy customizes machines for specific needs, including military and beyond. We offer CE-certified vehicles, safe and compliant, unlike some local modifications that are not always recertified. By choosing CASE, a CNH brand, you are supporting the European economy and thousands of jobs.



NEED TO CONTACT US?
specialapplications@cnh.com

NOTE: Standard and optional fittings can vary according to the demands and specific regulations of each country. The illustrations may include optional rather than standard fittings - consult your Case dealer. Furthermore CNH Industrial reserves the right to modify machine specifications without incurring any obligation relating to such changes.

Conforms to directive 2006/42/EC

