

ENGINE

Model	FPT NEF6
Emissions Certification	Tier 4 Final/Stage V
Fuel	Requires ultra-low sulfur fuel B5 biodiesel tolerant
Type	Water-cooled, 4-cycle diesel, 6-cylinder in line, high pressure common rail system – electric control. Fixed geometry turbocharger w/ air cooled intercooler, ATS, EGR-free
Cylinders	4-cylinder in-line
Displacement	411 in ³ (6.74 L)
Bore/Stroke	4.09 x 5.20 in (104 x 132 mm)
Fuel injection	High pressure common rail system – electronic
Fuel filter	Replaceable, full flow spin-on cartridge
Air filter	Dry type dual element w/ warning restriction indicator
Oil filter	Replaceable, full flow spin-on cartridge
Engine gradeability:	
Side-to-side	35°
Fore and aft	35°

Net horsepower – SAE J1349 @ 1800 RPM:
162 hp (120.4 kW)

Net max. torque – SAE J1349 @ 1600 RPM:
475 lbf-ft (644 N·m)

Cooling operating range:
113° to -4°F (45° to -20°C)

Oil Requires low-ash oil CJ-4

DRIVETRAIN

Travel control	Dual stage relief/ counter balance design
Brakes	Mechanical disc
Two speed travel:	
Max. high speed	3.5 mph (5.6 km/h)
Max. low speed	2.1 mph (3.4 km/h)
Automatic downshift	
Drawbar pull	42,300 lbf (188 kN)
Gradeability	70% – 35° Slope

ELECTRICAL

Voltage	24 Volts
Alternator rating	90 amp
Batteries	2 x 12 Volt
Battery reserve capacity	92 Ah/5 hour
Work lights – 4 1 boom, 1 upper, 2 cab	24 Volt/70 watt

OPERATOR ENVIRONMENT

Air conditioner output	18,100 BTU/hr
Heater output	20,150 BTU/hr
Sound level inside cab – ISO6396	70 dBA
Electrical outlet	12 Volt
Cab interior light	10 watt
Rear and side view cameras	

Operator's Cab:

Smooth and round shape design cab; Safety glass for all windows; Shock-less cab suspension by 4-point fluid mounting; Sliding front window w/ auto lock; 10" Full-color LCD monitor display; Membrane switch on monitor display; Switch panel (including throttle dial w/ eco-mode switch); Windshield wiper & washer; AM/FM/Bluetooth Radio w/ hands-free phone; Sectioned floor mat; Polycarbonate roof hatch & Sun shade; Auto air conditioner; Roll-over protective structure (ROPS); Top guard OPG level 1 (in cab structure).

Seat:

Low frequency air suspension w/ air springs and double acting hydraulic damper; Manual weight adjustment; Backrest angle adjustment; Seat height adjustment; Adjustable armrest (Angle and height); Adjustable headrest; Retractable seat belt; Adjustable lumbar support; Console mount on suspension; Control consoles adjust independently of seat.

ATTACHMENT

Boom	18 ft 8 in (5.70 m)
Arm options:	
Standard	9 ft 8 in (2.94 m)
Heavy-duty	7 ft 10 in (2.40 m)
Bucket digging force* w/ Auto Power-Boost	31,900 lbf (142 kN) 34,600 lbf (154 kN)

NOTE: *Digging force ratings based on ISO6015.

OPERATING WEIGHT

Operating weight	48,900 lb (22 400 kg)
w/ shoes	2 ft 6.25 in (800 mm)
w/ boom	18 ft 8 in (5.7 m)
w/ arm	9 ft 8 in (2.94 m)
w/ bucket	1,433 lb (650 kg)
w/ counterweight	10,140 lb (4 600 kg)

NOTE: W/ operator/full fuel/standard equipment.

GROUND PRESSURE

@ Standard operating weight 6.8 psi (0.46 bar)
w/ 23.6 in (600 mm) triple semi-grouser shoes

HYDRAULICS

System design	Open center
Main pumps	Two-variable displacement/ axial piston pumps w/ regulating system
Max. rated flow x 2	55.7 gpm (211 L/min) @ 1,800 RPM
System pressures:	
Boom, arm and bucket w/ Auto Power Up	4,970 psi (343 bar) 5,410 psi (373 bar)
Travel circuits	4,970 psi (343 bar)
Swing circuits	4,260 psi (294 bar)
Pilot pump	1 x gear design
Max. capacity	4.8 gpm (18 L/min)
Pilot system working pressure:	570 psi (39 bar, 40 kgf/cm ²)

Control valve w/ boom/arm holding valve:

Right track travel, bucket, boom and arm acceleration. 1 x Four-spool section
Left track travel, auxiliary, swing, boom and arm acceleration. 1 x Five-spool section

Work mode selections	SP – Mode Power – Mode Eco – Mode Lift – Mode
----------------------	--

Swing motor	Fixed displacement axial piston
Swing brake	Mechanical disc brake
Turn table bearing	Ball bearing type w/ internal gear
Swing final drive	Planetary gear reduction
Travel motor	Two-speed independent travel/axial piston

HYDRAULIC CYLINDERS

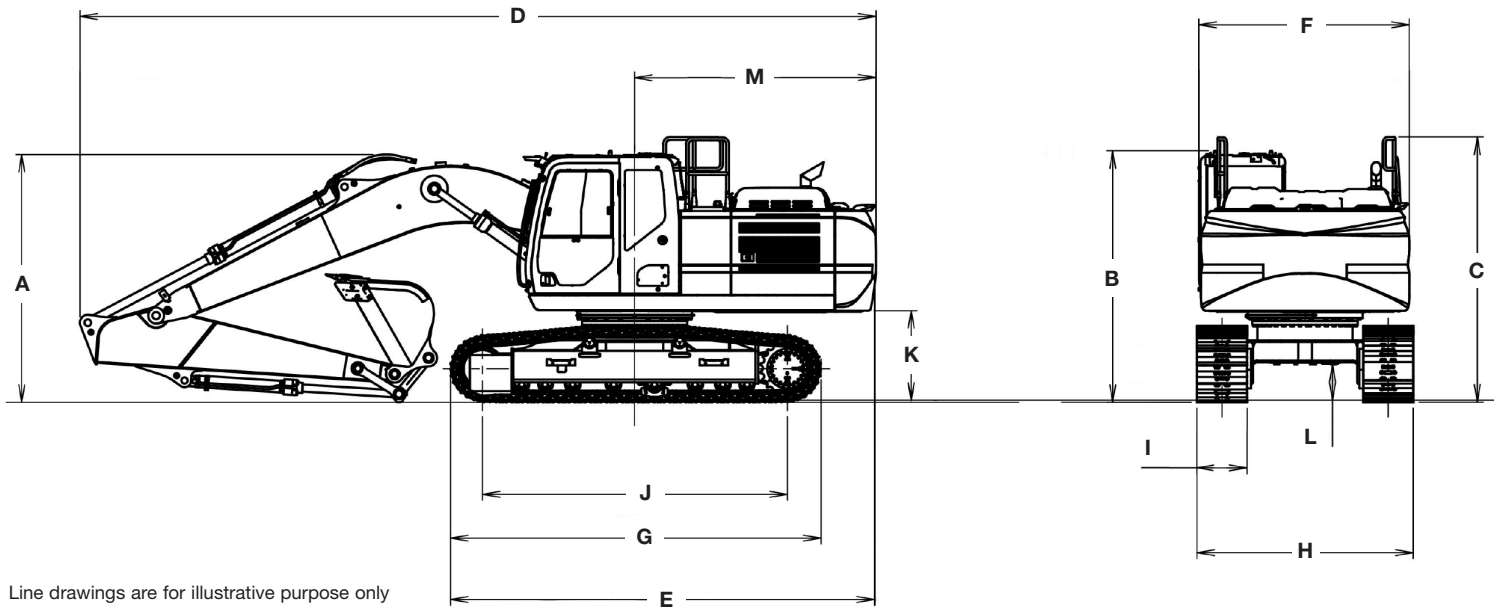
Boom cylinders	Two (2)
Cylinder bore	4.7 in (120 mm)
Cylinder rod diameter	3.3 in (85 mm)
Cylinder stroke	49.4 in (1 255 mm)
Arm cylinder	One (1)
Cylinder bore	5.5 in (140 mm)
Cylinder rod diameter	3.9 in (100 mm)
Cylinder stroke	57.5 in (1 460 mm)
Bucket cylinder	One (1)
Cylinder bore	4.7 in (120 mm)
Cylinder rod diameter	3.3 in (85 mm)
Cylinder stroke	39.8 in (1 010 mm)

SERVICE CAPACITIES

Fuel tank	85 gal (320 L)
Hydraulic system	70 gal (265 L)
Hydraulic Sump tank	38 gal (145 L)
Engine oil w/ filter	3.9 gal (14.6 L)
Swing drive	1.3 gal (5.0 L)
Final drive	1.3 gal (5.0 L)
Cooling system	7.9 gal (30 L)
DEF Tank	16 gal (60 L)

OTHER SPECIFICATIONS

Swing speed	11.5 RPM
Swing torque	47,200 lbf-ft (64 kN-m)
Swing brake	Mechanical disc
Undercarriage:	
Length	14 ft 8 in (4 470 mm)
Track gauge	6 ft 6 in (1 990 mm)
Carrier rollers	2
Track rollers	8
Shoes – triple grouser	49
Shoe width – std.	2 ft 7 in (800 mm)
Link pitch	7.5 in (190 mm)
Track:	
Chain	Grease lubricated/strutted
Guides	Single
Adjustment	Hydraulic

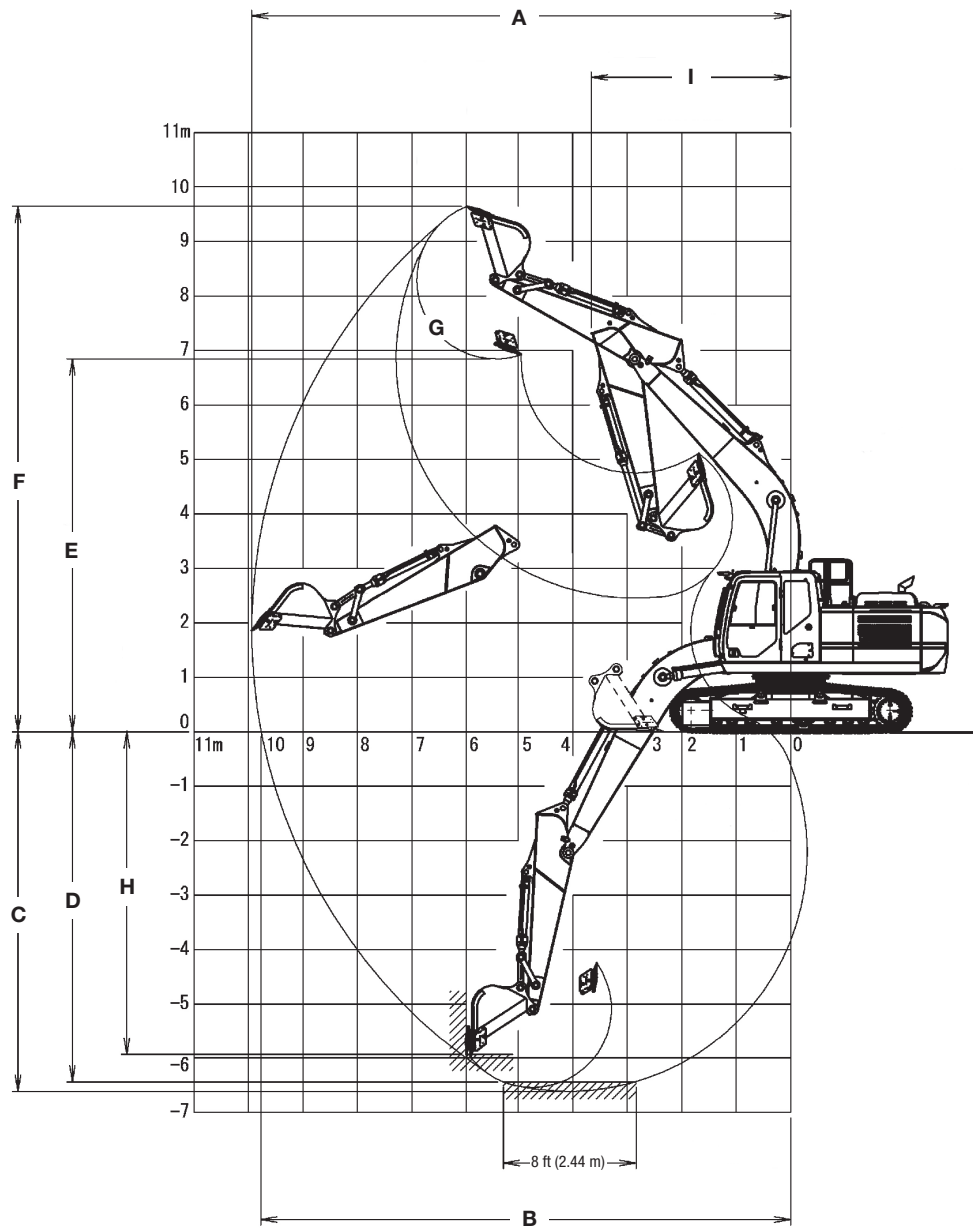


Line drawings are for illustrative purpose only and may not be exact representation of unit.

DIMENSIONS

	9 ft 8 in (2.94 m) Arm	7 ft 10 in (2.40 m) Arm
A. Overall height – with attachment	9 ft 9 in (2 970 mm)	10 ft 5 in (3 190 mm)
B. Cab height	9 ft 11 in (3 020 mm)	9 ft 11 in (3 020 mm)
C. Overall height to top of guardrail	10 ft 5 in (3 180 mm)	10 ft 5 in (3 180 mm)
D. Overall length – with attachment	31 ft 4 in (9 540 mm)	31 ft 7 in (9 630 mm)
E. Overall length – without attachment	16 ft 10 in (5 120 mm)	16 ft 10 in (5 120 mm)
F. Width of upper structure	8 ft 3 in (2 520 mm)	8 ft 3 in (2 520 mm)
G. Track overall length	14 ft 7 in (4 470 mm)	14 ft 7 in (4 470 mm)
H. Track overall width with 24 in (600 mm) shoes	8 ft 6 in (2 590 mm)	8 ft 6 in (2 590 mm)
I. Track shoe width	2 ft 0 in (600 mm)	2 ft 0 in (600 mm)
J. Center to center – idler to sprocket	12 ft 0 in (3 660 mm)	12 ft 0 in (3 660 mm)
K. Upper structure ground clearance	3 ft 6 in (1 070 mm)	3 ft 6 in (1 070 mm)
L. Minimum ground clearance	1 ft 5 in (430 mm)	1 ft 5 in (430 mm)
M. Rear tail swing radius	9 ft 6 in (2 890 mm)	9 ft 6 in (2 890 mm)
Operating weight*	49,400 lb (22 400 kg)	48,848 lb (22 181 kg)
Ground pressure	6.7 psi (0.46 bar)	4.93 psi (0.34 bar)

NOTE: *With 9 ft 8 in (2.94 m) Arm, 1.18 yd³ (0.9 m³) Sumitomo Bucket, 31.5 in (800 mm) grouser shoe, operator, lubricant, coolant, full fuel tank.



PERFORMANCE SPECS

	9 ft 8 in (2.94 m) Arm	7 ft 10 in (2.40 m) Arm
A. Maximum dig radius	32 ft 6 in (9 900 mm)	30 ft 11 in (9 420 mm)
B. Dig radius at groundline	31 ft 11 in (9 730 mm)	30 ft 3 in (9 230 mm)
C. Maximum dig depth	21 ft 7 in (6 620 mm)	19 ft 11 in (6 080 mm)
D. Dig depth – 8 ft 0 in (2.44 m) level bottom	21 ft 2 in (6 440 mm)	19 ft 3 in (5 870 mm)
E. Dump height	22 ft 5 in (6 840 mm)	21 ft 9 in (6 620 mm)
F. Maximum reach height	32 ft 6 in (9 900 mm)	30 ft 11 in (9 420 mm)
G. Bucket rotation	177°	177°
H. Maximum vertical wall dig depth	19 ft 5 in (5 930 mm)	17 ft 11 in (5 450 mm)
I. Minimum swing radius	12 ft 0 in (3 660 mm)	11 ft 11 in (3 620 mm)
Arm digging force:		
Standard	23,200 lbf (103 kN)	27,700 lbf (123 kN)
Auto Power Up	25,200 lbf (112 kN)	29,900 lbf (133 kN)
Bucket digging force:		
Standard	31,900 lbf (142 kN)	31,900 lbf (142 kN)
Auto Power Up	34,600 lbf (154 kN)	34,600 lbf (154 kN)

LIFT CAPACITIES

9 ft 8 in (2.94 m) Lift capacities using a 1,433 lb (650 kg) bucket, 8,642 lb (3 920 kg) counterweight.

Load (Lift Point Height)	MINIMUM REACH			5 ft (1.5 m)		10 ft (3 m)		15 ft (4.5 m)		20 ft (6 m)		25 ft (7.5 m)		30 ft (9 m)		MAXIMUM REACH		
	@	END	SIDE	END	SIDE	END	SIDE	END	SIDE	END	SIDE	END	SIDE	END	SIDE	@	END	SIDE
+25 ft (7.5 m)	20 ft 2 in (6.16 m)	6,250 lb* (2 980 kg)*	6,250 lb* (2 980 kg)*									5,100 lb* (2 960 kg)*	5,100 lb* (2 960 kg)*			25 ft 0 in (7.73 m)	5,000 lb* (2 260 kg)*	5,000 lb* (2 260 kg)*
+20 ft (6 m)	20 ft 1 in (6.11 m)	9,200 lb* (4 180 kg)*	9,200 lb* (4 180 kg)*									8,550 lb* (3 940 kg)*	7,850 lb (3 660 kg)			28 ft 4 in (8.69 m)	4,750 lb* (2 150 kg)*	4,750 lb* (2 150 kg)*
+15 ft (4.5 m)	16 ft 11 in (4.98 m)	11,350 lb* (4 870 kg)*	11,350 lb* (4 870 kg)*							10,300 lb* (4 760 kg)*	10,300 lb* (4 760 kg)*	9,800 lb* (4 490 kg)*	7,600 lb (3 550 kg)	5,700 lb* (3 180 kg)*	5,400 lb (2 530 kg)	30 ft 4 in (9.26 m)	4,700 lb* (2 140 kg)*	4,700 lb* (2 140 kg)*
+10 ft (3 m)	7 ft 3 in (2.23 m)	19,400 lb* (8 280 kg)*	19,400 lb* (8 280 kg)*			22,500 lb* (10 500 kg)*	22,500 lb* (10 500 kg)*	16,500 lb* (7 670 kg)*	16,350 lb (7 580 kg)	12,700 lb* (5 880 kg)*	10,550 lb (4 900 kg)	10,700 lb* (4 930 kg)*	7,300 lb (3 400 kg)	8,300 lb* (3 870 kg)	5,300 lb (2 460 kg)	31 ft 3 in (9.53 m)	4,850 lb* (2 210 kg)*	4,850 lb (2 200 kg)
+5 ft (1.5 m)	8 ft 3 in (2.52 m)	9,350 lb* (4 220 kg)*	9,350 lb* (4 220 kg)*			20,300 lb* (8 580 kg)*	20,300 lb* (8 580 kg)*	20,550 lb* (9 540 kg)*	15,450 lb (7 180 kg)	14,850 lb* (6 860 kg)*	9,950 lb (4 630 kg)	11,000 lb (5 110 kg)	7,000 lb (3 250 kg)	8,150 lb (3 790 kg)	5,100 lb (2 390 kg)	31 ft 3 in (9.28 m)	5,200 lb* (2 350 kg)*	4,750 lb (2 150 kg)
Groundline	5 ft 8 in (1.72 m)	8,300 lb* (3 770 kg)*	8,300 lb* (3 770 kg)*			18,950 lb* (8 330 kg)*	18,950 lb* (8 330 kg)*	22,800 lb* (10 540 kg)*	14,600 lb (6 780 kg)	15,200 lb (7 080 kg)	9,500 lb (4 410 kg)	10,700 lb (4 970 kg)	6,700 lb (3 130 kg)	7,650 lb* (3 730 kg)	5,000 lb (2 330 kg)	30 ft 6 in (9.28 m)	5,700 lb* (2 600 kg)*	4,900 lb (2 220 kg)
-5 ft (-1.5 m)	1 ft 7 in (0.48 m)	11,700 lb* (5 220 kg)*	11,700 lb* (5 220 kg)*	16,400 lb* (7 490 kg)*	16,400 lb* (7 490 kg)*	24,400 lb* (10 770 kg)*	24,400 lb* (10 770 kg)*	23,200 lb* (10 710 kg)*	14,350 lb (6 660 kg)	14,950 lb (6 960 kg)	9,250 lb (4 300 kg)	10,550 lb (4 910 kg)	6,600 lb (3 070 kg)			28 ft 8 in (8.76 m)	6,650 lb* (3 010 kg)*	5,350 lb (2 430 kg)
-10 ft (-3 m)	1 ft 7 in (0.48 m)	18,100 lb* (8 080 kg)*	18,100 lb* (8 080 kg)*	22,300 lb* (9 960 kg)*	22,300 lb* (9 960 kg)*	33,500 lb* (14 770 kg)*	28,750 lb (13 430 kg)	22,550 lb* (10 420 kg)*	14,500 lb (6 730 kg)	15,050 lb (6 990 kg)	9,350 lb (4 340 kg)	10,700 lb (4 980 kg)	6,750 lb (3 130 kg)			25 ft 11 in (7.92 m)	8,400 lb* (3 790 kg)*	6,350 lb (2 860 kg)
-15 ft (-4.5 m)	4 ft 0 in (1.16 m)	29,150 lb* (12 870 kg)*	29,150 lb* (12 870 kg)*	31,500 lb* (13 990 kg)*	31,500 lb* (13 990 kg)*	28,900 lb* (13 430 kg)*	28,750 lb (13 990 kg)	19,900 lb* (9 260 kg)*	14,950 lb (6 940 kg)	14,100 lb* (6 630 kg)*	9,850 lb (4 550 kg)					21 ft 8 in (6.67 m)	11,850 lb* (5 360 kg)*	8,500 lb (3 790 kg)

7 ft 10 in (2.40 m) Lift capacities using a 1,543 lb (700 kg) bucket, 8,642 lb (3 920 kg) counterweight.

Load (Lift Point Height)	MINIMUM REACH			5 ft (1.5 m)		10 ft (3 m)		15 ft (4.5 m)		20 ft (6 m)		25 ft (7.5 m)		30 ft (9 m)		MAXIMUM REACH		
	@	END	SIDE	END	SIDE	END	SIDE	END	SIDE	END	SIDE	END	SIDE	END	SIDE	@	END	SIDE
+25 ft (7.5 m)	18 ft 5 in (5.64 m)	5,600 lb* (2 680 kg)*	5,600 lb* (2 680 kg)*							8,700 lb* (3 510 kg)*	8,700 lb* (3 510 kg)*					22 ft 11 in (7.1 m)	7,400 lb* (3 340 kg)*	7,400 lb* (3 340 kg)*
+20 ft (6 m)	18 ft 4 in (5.57 m)	10,250 lb* (4 680 kg)*	10,250 lb* (4 680 kg)*							10,250 lb* (4 670 kg)*	10,250 lb* (4 670 kg)*	9,400 lb* (4 320 kg)*	7,600 lb (3 550 kg)			26 ft 7 in (8.14 m)	7,000 lb* (3 170 kg)*	6,750 lb (3 020 kg)
+15 ft (4.5 m)	13 ft 4 in (4.03 m)	13,250 lb* (6 870 kg)*	13,250 lb* (6 870 kg)*					13,600 lb* (6 320 kg)*	13,600 lb* (6 320 kg)*	11,300 lb* (5 240 kg)*	10,850 lb* (5 020 kg)*	10,450 lb* (4 840 kg)*	7,400 lb (3 460 kg)			28 ft 8 in (8.76 m)	6,950 lb* (3 140 kg)*	5,700 lb (2 580 kg)
+10 ft (3 m)	9 ft 9 in (3.00 m)	14,650 lb* (6 520 kg)*	14,650 lb* (6 520 kg)*			26,000 lb*	26,000 lb*	17,950 lb* (8 230 kg)*	16,250 lb* (7 530 kg)	13,500 lb* (6 240 kg)*	10,300 lb (4 780 kg)	11,100 lb (5 150 kg)	7,150 lb (3 320 kg)	(3 580 kg)*	(2 400 kg)	29 ft 8 in (9.05 m)	7,150 lb* (3 240 kg)*	5,250 lb (2 370 kg)
+5 ft (1.5 m)	10 ft 7 in (3.21 m)	13,450 lb* (6 110 kg)*	13,450 lb* (6 110 kg)*					21,300 lb* (9 810 kg)*	15,050 lb (6 990 kg)	15,400 lb (7 120 kg)*	9,750 lb (4 530 kg)	10,800 lb (5 040 kg)	6,850 lb (3 180 kg)	(3 740 kg)	(2 340 kg)	29 ft 8 in (9.05 m)	7,550 lb* (3 430 kg)*	5,100 lb (2 320 kg)
Groundline	8 ft 8 in (2.64 m)	12,750 lb* (5 790 kg)*	12,750 lb* (5 790 kg)*			17,000 lb* (7 480 kg)*	17,000 lb* (7 480 kg)*	23,100 lb* (10 680 kg)*	14,400 lb (6 680 kg)	15,050 lb (7 010 kg)	9,350 lb (4 340 kg)	10,600 lb (4 920 kg)	6,650 lb (3 080 kg)			28 ft 10 in (8.78 m)	8,350 lb* (3 780 kg)*	5,300 lb (2 400 kg)
-5 ft (-1.5 m)	3 ft 4 in (1.03 m)	12,350 lb* (5 520 kg)*	12,350 lb* (5 520 kg)*	18,050 lb* (8 040 kg)*	18,050 lb* (8 040 kg)*	25,150 lb* (11 120 kg)*	25,150 lb* (11 120 kg)*	23,050 lb* (10 640 kg)*	14,300 lb (6 650 kg)	14,900 lb (6 940 kg)	9,200 lb (4 280 kg)	10,550 lb (4 900 kg)	6,600 lb (3 060 kg)			27 ft 0 in (8.23 m)	9,400 lb (4 260 kg)	5,900 lb (2 670 kg)
-10 ft (-3 m)	3 ft 5 in (1.03 m)	22,050 lb* (9 830 kg)*	22,050 lb* (9 830 kg)*	25,150 lb* (11 250 kg)*	25,150 lb* (11 250 kg)*	31,800 lb* (14 690 kg)*	29,000 lb (13 510 kg)	21,850 lb* (10 090 kg)*	14,550 lb (6 770 kg)	15,050 lb (7 000 kg)	9,400 lb (4 360 kg)					23 ft 11 in (7.33 m)	11,450 lb (5 140 kg)	7,200 lb (3 230 kg)
-15 ft (-4.5 m)	6 ft 5 in (1.88 m)	42,150 lb* (16 900 kg)*	42,150 lb* (16 900 kg)*			25,950 lb* (12 080 kg)*	25,950 lb* (12 080 kg)*	18,100 lb* (8 460 kg)*	15,100 lb (7 020 kg)							19 ft 4 in (5.96 m)	12,050 lb* (5 500 kg)*	10,200 lb (4 530 kg)

NOTE: *Following number indicates hydraulic capacity

STANDARD EQUIPMENT

ENGINE

FPT NEF6
Tier 4 Final/Stage V Certified
ATS
Selective Catalytic Reduction
on Filter – SCRoF
Six-cylinder turbo-charged diesel
Fixed geometry turbocharger
High pressure common rail
system - electronic
Neutral safety start
Auto-engine warm up
Air intake heater
Fuel Economy Assist System – FEA
Engine Protection Feature – EPF
Dual-stage fuel filtration
Dual element air filter
Remote oil filter
Drain for fuel tank
1000-hour engine oil/filter interval
24-volt system
Engine oil sample port
Battery disconnect switch
Emergency engine stop
External Fuel and DEF gauges
Fan housing
Fuel cooler
Fuel filter restriction indicator
Fuel shut-off valve
Radiator, oil cooler,
intercooler – protective chaff screen

FUEL ECONOMY SYSTEMS

Engine Idle/Fuel Economy System:
Auto-idle
One-touch idle
Timed engine shut down
BEC – Boom Economy Control
AEC – Auto Economy Control
SWC – Swing Relief Control
SSC – Spool Stroke Control

HYDRAULICS

Boom/Arm/Bucket/Swing:
Pilot pressure control system
(ISO or SAE control pattern)
Work mode select:
1 SP – mode
2 Power – mode
3 Eco – mode
4 Lift – mode
Travel mode select – 2-speed travel with
auto downshift
Attachment cushion control
Hydraulic lock – gate lock, left side tilt console
Single pedal travel
Custom flow balance adjustment:
Arm in vs. boom up
Arm in vs. swing
Multi-function with electronic pressure
and flow control/joystick activated
with electronic configurable
proportional controls

UPPER STRUCTURE

ISO mirrors – 3
Cab ISO-Mounts – fluid and spring
Upper mounted work light – 70 watt
Swivel guard belly pan
Center cover – over main CV
Fuel tank belly pan
Handrail – RH access
ISO guard rails
Lifting eyes for counterweight
Lockable fuel cap, service doors and tool box

ATTACHMENTS

Boom – 18 ft 8 in (5.70 m)
Arm – 9 ft 8 in (2.94 m)
Heavy-duty bucket linkage
Boom mounted work light – 70 watt
Auxiliary pipe brackets
Centralized grease fittings
Attachment cushion valve
Arm and boom regeneration
Bucket anti-clatter device
Chrome pins
Easy Maintenance System (EMS) bushings
Teardrop pin retention keepers

OPERATOR ENVIRONMENT

Operators cab:
Smooth and round shape design cab,
fabricated by press work
Safety glass for all windows
Shock-less cab suspension by 4-point
fluid mounting
Sliding front window with auto lock
10 in Full-color LCD monitor display
Membrane switch on monitor display with
5 configurable button on bottom
of monitor
Switch panel – including throttle dial with
eco-mode switch
Windshield wiper & washer
AM/FM/Bluetooth Radio with
hands-free phone
Sectioned floor mat
Polycarbonate roof hatch & Sun shade
Auto climate control
Roll-over protective structure – ROPS
Top guard OPG level 1 – in cab structure
Operator's seat:
Low frequency air suspension with
air springs and double acting
hydraulic damper
With following features:
Manual weight adjustment
Backrest angle adjustment
Seat height adjustment
Adjustable armrest – Angle and height
Adjustable headrest
Retractable seat belt
Adjustable lumbar support
Console mount on suspension
Control consoles adjust
independently of seat
Others:
Rear view mirror – Cab side & Right side
Rear & Right-side view Camera

UNDERCARRIAGE

Travel motor	Variable displacement axial piston motor
Brake	Mechanical disc brake
Hydraulic service brake	Brake valve
Final drive	Planetary gear reduction
Travel speeds:	
High	3.5 mph (5.6 km/h) (Automatic travel speed downshifting)
Low	2.1 mph (3.4 km/h)
Drawbar pull	42,300 lbf (188 kN)
Number of carrier rollers	2 – each side
Number of track rollers	8 – each side
Number of shoes	49 – each side
Type of shoe	Triple semi-grouser shoe
Link pitch	7.48 in (190 mm)
Width of shoe	23.6 in (600 mm) S.T.D
Grade-ability	70% (35°)

TELEMATICS

CASE SiteWatch™ Telematics – includes
hardware and a 3-yr Advanced
data subscription for 2-way communication

OPTIONAL EQUIPMENT

ENGINE

Refueling pump
Air pre-cleaner – Cyclone
High ambient temperature cooling package

HYDRAULICS

Auxiliary hydraulics:
Proportionally controlled secondary
low-flow auxiliary hydraulics
Hose Burst Check Valve – HBCV

MACHINE CONTROL

Leica iCON iXE2 – 2D System
Leica iCON iXE3 – 3D System

ATTACHMENTS

Heavy-duty arm – 7 ft 10 in (2.40 m)
Quick coupler/Case multi-pin grabber
Tools:
Heavy-duty/Extreme-duty/Ditching Buckets;
Hammers; Thumbs; Compaction plates

UPPER STRUCTURE

Rubber bumper guard – order through
Service Parts

UNDERCARRIAGE

23.6 in (600 mm) rubber link chain, bolt-on
rubber pads on steel chain
23.6 in (600 mm) steel shoes,
triple semi-grouser
27.6 in (700 mm) steel shoes,
triple semi-grouser
Track guides – triple

OPERATOR ENVIRONMENT

FOPS cab top guard – Level 2
Front grill guard – 2 x 2 in (50.8 x 50.8 mm)
screen mesh
Front rock guard – vertical bars
Two piece/OPG 1
Front rock guard – vertical bars
One piece/OPG 2
Vandal guard (front window) with common key
Rain deflector – not available with front guards
Sun visor
Max View Monitor - 3 cameras with
270-degree view
LED Package:
Includes 6 LED Lights – 2 front cab
mounted, 2 rear mounted and 1 mounted
on each side

CaseCE.com

©2022 CNH Industrial America LLC. All rights reserved. CASE is a trademark registered in the United States and many other countries, owned by or licensed to CNH Industrial N.V., its subsidiaries or affiliates. CNH Industrial Capital is a trademark in the United States and many other countries, owned by or licensed to CNH Industrial N.V., its subsidiaries or affiliates. Printed in U.S.A. Contains 10% post-consumer fiber.

IMPORTANT: CASE Construction Equipment Inc. reserves the right to change these specifications without notice and without incurring any obligation relating to such change. Availability of some models and equipment builds vary according to the country in which the equipment is used. The illustrations and text may include optional equipment and accessories and may not include all standard equipment. Your CASE dealer/distributor will be able to give you details of the products and their specifications available in your area.



CASE Construction Equipment is biodiesel-friendly. NOTE: All engines meet current EPA emissions regulations. All specifications are stated in accordance with SAE Standards or Recommended Practices, where applicable.



Always read the Operator's Manual before operating any equipment. Inspect equipment before using it, and be sure it is operating properly. Follow the product safety signs and use any safety features provided.

Form No. CCE202209CX220ENLC

CX220E NLC

6 of 6