

# BRAUD HIGH AND EXTRA HIGH CAPACITY GRAPE HARVESTERS

9090L and 9090X



# Braud High & Extra High Capacity Series. Excellence reinvented.

The new Braud 9000L and X Series is built with proven Braud DNA to deliver high quality, clean grapes to some of the world's top vineyards. With industry-exclusive features such as the Noria buckets, and the SDC shaking system, our harvesters are designed to be gentle on the vines, provide better climbing capability in steep hills, and be more efficient and easy to operate. Couple these harvest-focused features, with industry-leading cleaning systems, such as the patented SOCMA destemmer, now available with a side conveyor configuration, and your operation will benefit from less time spent cleaning at the winery and better tasting wines.

## Productivity & harvest care

The harvest season is now shorter than ever. The new Braud 9000L and X Series can be set up quickly and easily to work in different vineyards for maximum efficiency. The SDC shaking system, extra large shaker frame and high capacity cleaning system help you harvest your vineyard gently and efficiently. The integrated Intelligent Management System 2.0, with IntelliView™ IV touch screen monitor provides full access to all key harvester functions. The Automated Crop Setup (ACS) feature helps program and store your preferred harvesting settings for easy setup to start your harvest. Optimizing productivity for all vine types has never been easier.

## Less wash time. More work.

The washing process has been reinvented. The Braud 9000L and X Series now features wireless remote control convenience to provide effective washing while saving you time and money. The picking head wash time is reduced by a unique pre-washing system featuring a strategically positioned water supply pipe, water nozzles positioned to key areas, and fewer debris accumulation areas. The Noria tension system and automatic transport lock helps to reduce maintenance and preparation time. Destemmer rotors now feature a tool-free height adjustment system, allowing easy adjustments in the field to maximize cleanliness.

## Best in class comfort & safety

Step up into your new field office. The Braud cab has been designed to fit you perfectly. The seat and steering wheel adjust to suit you. The standard armrest, with integrated multifunction handle, provides easy access to the most commonly used controls. Safe, quiet and comfortable, the cab complies with the stringent Code 4 European Machine Directive, and can now be fitted with the unique Blue Cab™ 4 system, providing a twin filtration system, complying to both Category 2 and 4 of EN 15695-1 and -2.

## Power & fuel efficiency

With FPT Industrial common rail electronic engines you'll see higher power outputs and better fuel economy. With 175 horsepower, the new Tier III 6 cylinder NEF engines deliver more power and torque with best in class fuel efficiency. The steering system provides time-saving maneuverability, even on tight headlands, with minimum effort.

## Multifunctionality

Fitted with the multipurpose arm, rear frame and ballast, you will quickly turn your new Braud 9000 into a unique tool carrier for different applications. Sprayers and front implements are the go-to choice to turn your Braud 9000 into a multipurpose machine that works productively year round.





BRAUD HISTORY	4-5
PICKING HEAD	6-7
NORIA BUCKET SYSTEM	8-9
DESTEMMER	10-11
WASHING SYSTEM	12-13
ENGINE & TRANSMISSION	14-15
CAB	16-17
OPERATOR ENVIRONMENT	18-21
MULTIFUNCTION	22-23
SERVICE & ACCESSORIES	24-25
SPECIFICATIONS	26-27

# The most awarded brand in history.

**1975:** Braud 1020, one of the very first self-propelled grape harvesters rolled off the production line in 1975. This machine would revolutionize the face of grape harvesting.

**1980:** Gold medal at SIMA The arrival of the **Braud 1014** with the revolutionary Noria bucket conveying system raises the bar for harvesting quality.

**1983:** **Braud 1214** is launched, raising the bar for harvesting capacity.

**1984:** Braud joins forces with Fiat Agri, which marked the dawn of a new era of developments.

**1984:** Braud 2414 to 2714 Series launched, introducing for the first time ever, multipurpose functionality to Braud machines. It first started with a partnership with Berthoud in 1984.

**1989:** **Braud 2420 to 2720** Series, featuring the Gold medal award winning SDC shaking system, represented a major leap forward for increasing picking efficiency.

**1994:** The **Braud Saphir** SB high capacity range represented harvesting and heralded in a new era of world class machines.



## A history of harvesting excellence

In 1975, Braud developed their first self-propelled grape harvester and the face of viticulture changed forever. Today, these state-of-the-art New Holland Braud machines are designed, developed and built by engineers that live, breathe and sleep wine and olives at the New Holland Braud Centre of Excellence in Coex, France. This pioneering plant is at the forefront of sustainable production, with innovative practices aimed at reducing the environmental impact and carbon footprint of harvester manufacturing.

**2001:** Braud SB65 Fitted with an extra large shaker frame with twin adjustment system, the SDC shows its true potential for extra large vineyard grape harvesting as well as Super High Density Olive orchard.

**2003:** Customer can now select the **Braud VL600 and VX680 Series:** with the first time the on board destemmer, able to remove 99.56% of the MOG: a great leap in Grape harvesting mechanisation.

**2007:** Tier 3 engines are installed on **VL6000 and VX7090 Series.**

**2011:** Silver medal award for **Braud 9000L and X Series:** with IMS system; it's the first stage of the Intelligent Grape harvesting Era. Also Gold medal at Sitevi for EnoControl.

**2017:** **15,000 Braud** harvesters built.

**2017:** New, Extra High Capacity Braud 9090X showcases winning features like the integrated washing system and **Blue Cab™ 4** technology, and for the first time a destemmer on board a side conveyor configuration: for non stop harvesting combined with premium quality fruit.



2001

2003

2007

2011

2017



20<sup>th</sup> March 2018: Braud 9090X with destemmer and side conveyor completed a performance test At C&S DeVito Vineyard, South Australia, and verified by SGS. A total of 197.6 Tonnes of shiraz were picked during 8 hours, but also achieving an astonishing clean sample with 1% MOG in the grape sample (as rated MOG-0 in Australian Scale).



## At the heart of Braud DNA.

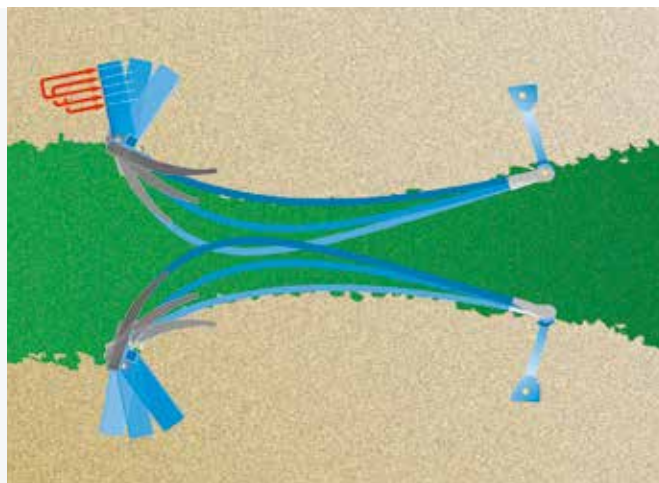
---

For over 40 years, our specialist teams at the Coëx factory in France, have designed, fine-tuned, and produced over 15,000 grape harvesters. The Braud history sets a benchmark in manufacturing quality, grape harvesting quality, and meets the multifunction needs for wine growers throughout the world. The SDC system (Shaking Dynamic Control) with flexible shaking rods, and the Noria collection system are at the heart of Braud DNA. These patented Braud technologies provide unparalleled shaking efficiency, respect for the wine stock, fruit integrity, and minimize ground losses.



### SDC shaking system

The SDC shaking system is an industry exclusive for the Braud Series. Each shaking rod is independent and hinged at the rear on a maintenance-free flexible connection. This connection allows perfect control of the shaker action, with maximum flexibility, for gentle picking. The ACS system "Automated Crop Setup" will enable you to program and save your preferred harvesting settings into a folder on the IntelliView™ IV monitor. You can recall your preferred settings for each crop and vineyard when required.



### X for extra large shaker frame

Braud 9090X feature an exclusive Extra large shaker frame: both sides can slide in and out for perfectly match and shake wide bushes. Once adjusted, heavy duty sliding frame, combined with hydraulic lock pads make the most of your adjustment to efficiently and gently pick even the widest canopies.



### Optimized shaking system

Standard configuration includes 24 shakers on all Braud 9000X Series harvesters Braud 9090L feature 14 shakers standard.



### Adjustable shaker plate

Braud 9000L and X Series harvesters can be fitted with a quick release shaker plate. The quick release shaker plate, allows the operator to easily adapt the chosen shaker rod to the fruit bearing zone with only one bolt. As a result, the shaker height is easily adaptable from vineyard to vineyard. The heavy duty quick release shaker plate can accommodate up to 24 shaker mounts.



# Your wine, treated with care from the beginning.

Since 1980, the Noria bucket system has collected every grape harvested by a Braud harvester. New Holland has been constantly improving and refining the system for higher speed and productivity. The Braud Noria system has become the benchmark for grape harvesting.

## No fruit maceration

The grapes collected by Noria buckets at the bottom of the harvesting head are conveyed gently, without loss or maceration, up to the top of the harvesting head, always by the same bucket. Its design allows it to catch and carry even the lowest fruits safely.



## Noria collection system, a must have

At New Holland Braud, respect for the vine and grapes is a design priority. The proven NORIA polyurethane buckets, ensures total care of the vines and fruit without ground losses. All updated Braud models have extra capacity with 2300mm for 9090L and up to 2500 mm of sealed length on the 9090X and XXL size buckets for all models.



## Quick bucket clip

Noria buckets are now fitted with the quick fit blue bucket clip, acting like a fuse toward over stress, to help reduce bucket damage. The quick attach design is simple and user-friendly and can be installed in no time.



## Reduced and simplified maintenance

Maintenance of the Braud 9000 Series is now even easier. Advanced components make ownership and maintenance more cost effective and straightforward. The Noria tensioning system allows for tool free tensioning of both Noria sides, using a simple crank handle to move the Noria rails up and down. A Noria pressure sensor detects when the Noria are under too much pressure and warns the driver.





### Best in class cleaning

The cleaning conveyors are optimized for even crop distribution. The cleaning always occurs when the crop is in free fall, for better effectiveness on lightweight material. All Braud 9000 Series and 9090X are fitted with a 700 mm wide high capacity cleaning conveyor for a better crop conveying and high capacity cleaning. An easily adjustable flap ensures the best crop distribution over the belt for better crop cleaning.



### High capacity in every way

Cleaning fans have been optimized to improve crop sample cleanliness. The redesigned fan exhaust now directs fan air flow to the rear of the machine for less dust, less noise, and less residue accumulation. The end result is better airflow efficiency for the cleaning system, and provides easier access to the machine and fan pipes. An additional benefit of this redesign is increased hopper capacity of 3600 liters for braud 9090L and up to 4000 liters on the Braud 9090X twin hopper, making it the largest hopper capacity on the market.

# Premium quality fruit delivered... Non-stop.

Now available with side conveyor, the Braud 9000X Series can be fitted with a SOCMA patented destemmer. Add the optional destemmer to your Braud 9090X high-yield harvester and you will maximize fruit quality while maintaining high yields and harvesting capacity. An advanced mesh and finger system eliminates up to 99.56% of harvest impurities, or MOG (material other than grapes) including rachis, stalks, leaves other debris. By removing MOG while you harvest, you not only improve your efficiency, you help eliminate the herbaceous taste that can be transferred to the grapes during transport to the winery. For the two-hopper 9090L and X model, the optional destemmer is fitted on the top of each hopper and does not compromise hopper capacity for optimum productivity. The destemmer can handle high yields while providing outstanding harvest quality and minimal grape damage. Setting up the destemmer has been improved, with easier settings, to fine tune the destemming process resulting in best in class fruit destemming, fruit quality, integrity, and capacity.

## Outstanding impurity elimination

The destemmer eliminates harvest impurities such as stalks, leaves and all material other than grapes (MOG). A dedicated MOG transfer auger discharges this material to the ground or to the picking head for recycling and re-destemming.

## Gain in quality, gain in productivity

The destemmer is positioned on the machine in a way that does not compromise the hopper capacity. It has a high throughput for optimum productivity, that can handle an astonishing destemming throughput up to 25 tons of grape per hour. Two grape level sensors advise the driver when the hopper level reaches 75% full, to prepare unloading logistics, and warns the operator when the hopper is 100% filled.

## Destemming made easy

A specially designed crop distributor for 9090X twin hopper, combined with two infrared level sensors, allows the hopper to be filled completely and automatically, particularly in non-destemming mode. Combined with electrically actuated flaps at the front of destemmers, it enables the driver to switch from destemming to non-destemming from the cab. This feature is especially useful for operators working more than 30% of the time in non-destemming mode.



### Cane remover

In heavy canopy conditions, or conditions that may cause the shaking system to detach canes or branches, the cane removal system removes obstructions to avoid blockages to the Noria buckets, conveyors, fans, etc.



### Pre-sort system improves air flow

For even better cleaning capacity, the 9090X side conveyor model features a pre-sorting system consisting of two rollers positioned at the end of the receiving conveyors. The rollers direct single berries that don't need destemming directly onto the cross conveyor. This increases air flow to the top fan to help lift and remove leaves from the remainder of the harvested fruit.



### High-performance grape cleaning

Four cleaning fans—two upper fans and two lower fans—are standard equipment for braud 9090X and provide optimal performance in heavy canopy conditions. Using four fans leads to the removal of more leaves compared to using two top fans alone. The top fans are 25 inches in diameter for more air flow at lower RPMs for less juicing in high tonnage conditions. Top fan exhaust tubes are directed to the top rear of the harvester for less noise, dust, and residue. The Braud 9090X delivers better productivity and a cleaner product sample.



### Simplified settings, better destemming

Setting up the Braud 9000 Series destemmer is simple and straightforward. The distance between the rotors and mesh can be adjusted using the Noria adjustment lever to fine tune the destemming quality and performance to make the most of your harvest. The mesh tension adjustment has been revised with a tool free system. Advanced materials, sealed bearings and a smoother conveyor path make the New Holland destemmer reliable — saving you time and money.



# Washing made easy.



The Braud 9000 Series was designed with operator ergonomics in mind, user-friendly interfaces, safety and easy maintenance. The washing system and maintenance functions in particular have been carefully engineered, which earned the Braud 9000 series a Silver medal at Sitevi 2017. The award-winning washing system comes standard to ensure cleaning is quick, easy, and effective.



## Washing system: 20 minute cycle time

The pre-wash set up couldn't be easier, all you do is connect a water supply. Using the wireless remote control, the operator can set the machine to run the pre-wash cycle automatically, in preparation for the manual rinse. The result is a complete pre-wash cycle in 20 minutes.

## Pre-washing system

During the pre-wash cycle, six water nozzles spray water into difficult to reach areas, such as the Noria buckets and the conveyor belt. The operator can then use the on board water hose to do a final rinse from the safety of the platform, avoiding the need to drag a water hose from ground level. The pre-wash system improves operator safety and saves time by quickly wetting and rinsing the sugars and debris away while the operator gets "suited up" in preparation for the manual washing process.



## Strategically placed water nozzles

The washer nozzles target the Noria buckets when they are upside down. The dirty water and debris falls out and is carried away by the conveyor belt for a fast, efficient wash cycle.



## Remote control washing

All Braud 9000 models come equipped with a standard wireless and waterproof remote control to allow the operator to activate the key machine functions during the washing process from a safe position. Two specially designed waterproof wash suits are provided and feature a dedicated arm pocket for the wireless remote control, so the operator always has the remote within easy reach.



### Washing platform and IMS 2.0

The flat floor access platform features folding handrails so the operator can access the top part of the harvester in complete safety. The dedicated washing mode allows the operator to engage the washing operation from the safety of the platform, activating the Noria buckets and conveyors with the remote. Handrail sensors linked to IMS 2.0 ensure the machine functions can only be activated from a safe area.



### Integrated storage

A storage compartment provides a convenient place to store boots and wash suits, or can be used for additional tool storage. The compartment is positioned next to the access ladder.

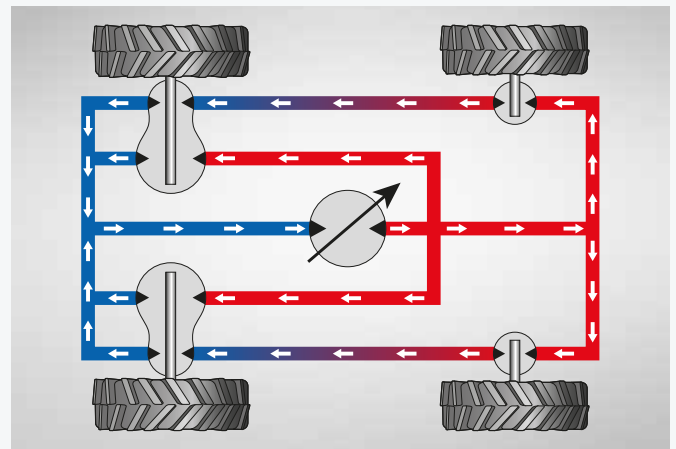


## Powerful and fuel efficient.

The Braud 9000 series is powered by ultra-efficient FPT Industrial 6-cylinder Tier III common rail electronic engines providing 175 horsepower. Combined with the Anti-Skid Twin Lock transmission and IMS 2.0, the power management is designed for efficient fuel consumption. FPT Industrial NEF engines require no EGR valve solution, as the engine only breathes fresh, clean air. As a result, engine power outputs are equivalent to higher horsepower competitors that use EGR valves. The machine with the best engine on the market is the obvious choice.

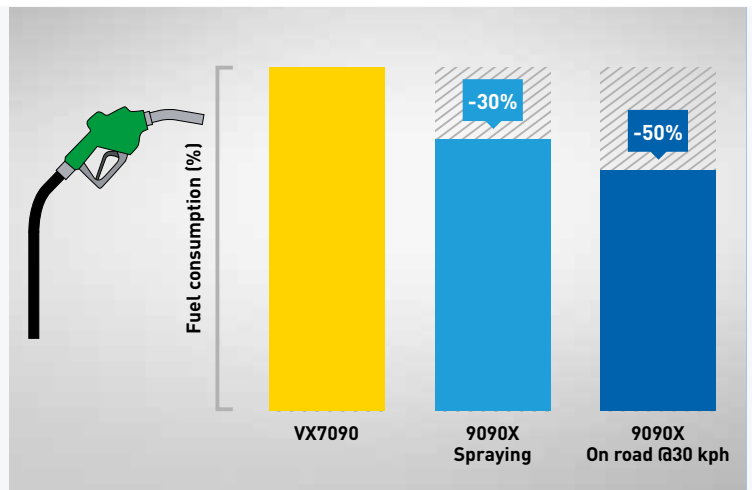
### IMS 2.0 new generation Intelligent Management System

Awarded a bronze medal at Sitevi 2017, the latest generation Braud Intelligent Management System, IMS 2.0, features added functionality: combined with the IntelliView™ IV monitor, it continually monitors the demand on the engine, keeping the harvesting parameters constant, but also taking into account the terrain and hydrostatic load, to constantly adjust engine rpm. The Braud high capacity range also features the benchmark Twin Lock hydrostatic system to maintain traction between the front and the rear wheel motors. As a result, traction is maintained in the most difficult conditions. The result is optimized fuel efficiency and industry-leading slope management.



### Outstanding fuel efficiency

Tier III engines, combined with IMS 2.0 offer outstanding fuel efficiency and economy. Pumps and hydraulics have been increased in displacement, resulting in a lower engine rpm requirement. Hydraulic components have been designed to provide fuel efficiencies during multifunction applications. This provides even better fuel efficiency in all work modes, benchmarking fuel efficiency while picking.



### Heavy duty 30 kph hydrostatic transmission (9090X)

The Braud 9090X feature a high capacity, heavy duty hydrostatic transmission. Based on the Poclain Twin Lock system, this extra high pressure and high efficiency transmission provides ultimate traction and hill climbing ability, with road speeds up to 30 kph road speed. The Braud 9090X also features standard front wheel hydraulic suspension, for the best ride and comfort on the market.



### Automatic leveling and head lock system

IMS 2.0 controls height and leveling. The operator simply sets the desired picking head height, and it will be maintained automatically, regardless of the terrain. Standard sensors, prevent the picking head from making contact with the ground in difficult conditions. Machine height is also maintained in road mode thanks to the auto-leveling system, providing constant height adjustment. Activated from the comfort of the cab, the automatic lock system keeps the picking head secure during road transport.



### Maneuverability and headland management

The headland management sequence can be activated with one button push on the multifunction handle, lifting the machine to a pre-set headland height and stopping the shakers. The same headland button will turn on all functions when entering the next row.

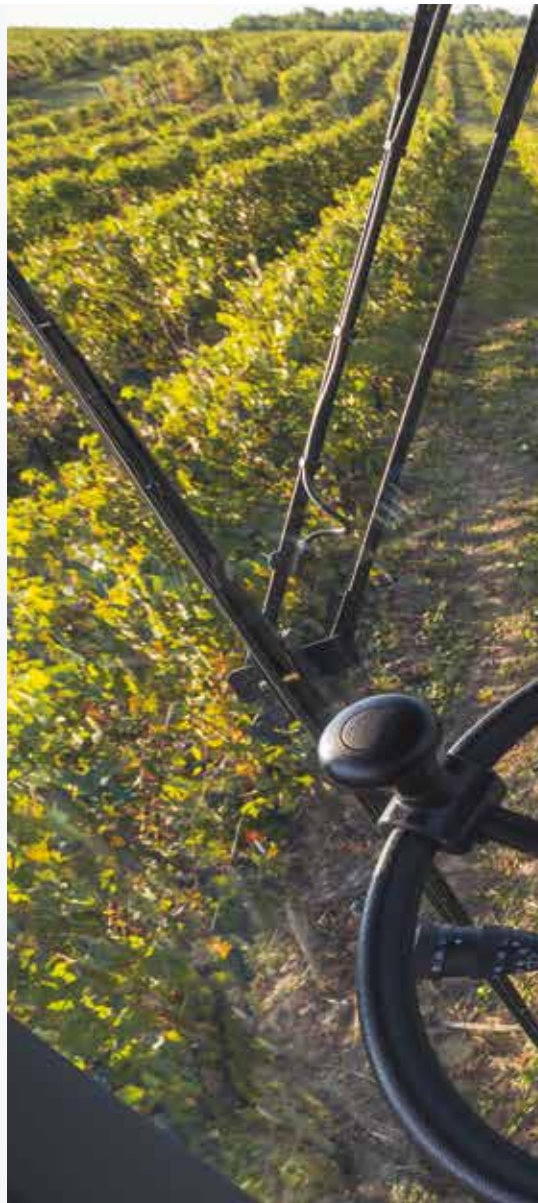


# Harvest in first class.

Braud 9090L and X series harvester cabs are recognized as the industry benchmark. The cabs are fully suspended and soundproofed for a smoother, more comfortable ride. Pressurized, heated and air-conditioned, the cabs are designed to offer optimum comfort and protection during harvest, spraying and other operations. Noise levels are reduced by 3 decibels compared to the previous harvester series, providing the quietest and most comfortable cab on the market.

## The comfort benchmark

The Braud cab is designed to meet safety standards while keeping you comfortable throughout harvest. A seat belt, safety glass hammer and operator presence sensor are standard features. The side console provides enough space to securely store your personal items such as phones and features Bluetooth radio and two USB connections, allowing you to keep electronics fully charged. A fully redesigned headliner, including a coolbox, provides extra finish and functionality, with all buttons easily accessible. More comfort equals more performance.



## Easy access

An electronic ladder platform makes cab access safe and easy. An LED motion sensor automatically lights the way when climbing the steps at night.



## Light Control Panel

The Light Control Panel (LCP) provides easy access to turn on all of the machine lights and beacon.



## Full visibility

The Braud 9000 Series cab and the slim profile engine hood allows full visibility on the right side of the machine, giving you full control during harvesting.





### Night work

As standard, 12 lights illuminate your work area, with the addition of two rear side lights. Mounted on the left and right sides of the cab, the rear lights help with added visibility at night. Extra additional lights can be fitted as an option.



### 360° Vision

Two cameras come standard and are factory installed. In-cab color monitor can accommodate a total of four cameras to enhance visibility and view machine functions.



### Shade and space

Braud cabs are fitted with two sun shades, one on the front windshield and one at the rear. They provide comfort even in the brightest harvest conditions. Attention to design detail includes improved in-cab storage areas. A fold-down laptop table, coat hook and elastic storage.

# Blue Cab™ 4 system: ultimate protection and comfort.



Blue Cab™ 4 technology combines a cab filtration system with complete comfort. It is intended for multifunction activities such as spraying, or for those who expect the most operating ease with unique features. A heated and air ventilated two-tone seat ensures you stay relaxed and productive all day or night long.



## Coolbox

The 9090L and X Series with Blue Cab 4 system features a 12V cooler, meaning a refreshing drink is only an arm's length away. Want more? Its portability means it can be easily removed for easy fill.



## Auto air conditioning

Blue Cab 4 technology also brings with it new levels of comfort with integrated automatic air conditioning.



## LED lights

With the Blue Cab 4 system, the lighting package has raised the lighting bar. The spread of the LED light has been engineered for maximum visibility of the entire machine and working area. A total of over 10,000 lumens produces the best visibility for all working conditions.

# BLUE CAB<sup>4</sup>

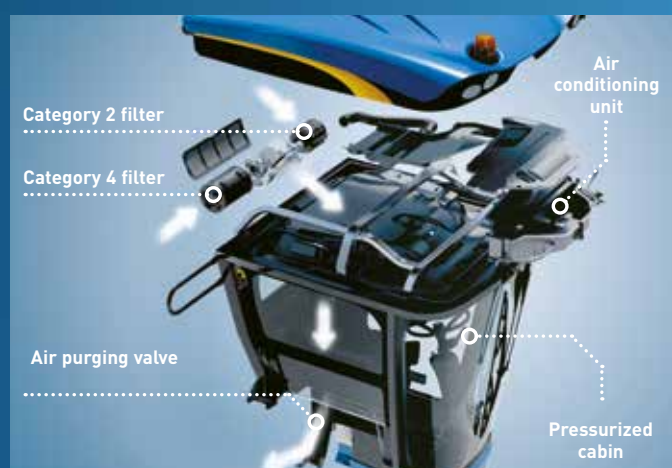
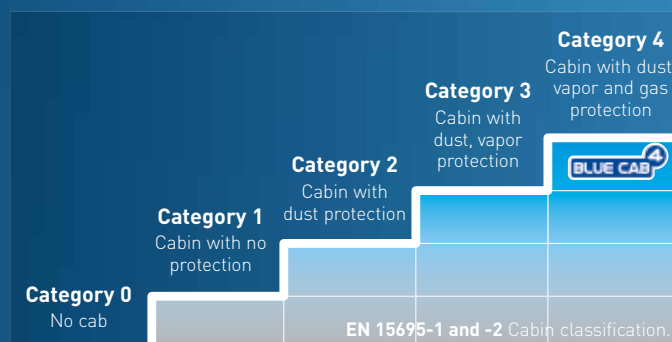


## Level 4 filtration (EN15695-1 and -2) and even more...

The Blue Cab 4 system is the most advanced cab filtration system on the market: it features not only a category 4 filtering, closed loop cab pressurization system but it also includes category 2 filtration, used when category 4 is not needed. Both category 2 and 4 have been validated by IRSTEA according to EN15695-1 and -2 standards, and by a complete field test validation. The filtration switchover is easy. Category 4 automatically starts when a spraying unit is attached and activated. Therefore on the road or in non-spray conditions, only category 2 is used.

## Pure air

The system includes a filter management system, helping to manage maintenance intervals and filter usage. Also included is a unique and patented auto air cleaning valve for purging air in the cab when the category 4 filtration starts.



# Effortlessly maximizing performance.

Intelligent and intuitive automation saves time and enhances harvesting performance. The multifunction handle allows you to control all key machine parameters, including travel speed and direction, manual leveling and harvesting head functions. The right armrest can be adjusted in length and height, and machine functions can be analyzed at a glance courtesy of the IntelliView™ IV touch screen monitor. An interactive handle display will train operators directly on the monitor, teaching and self-training all functions and basic machine settings. The ACS screen will enable the operator to save the preferred picking setting and store for a later recall.

All grape harvester functions and parameters can be simply and easily adjusted by touching the IntelliView™ IV monitor

Raise right hopper

Raise both hoppers

Raise left hopper

Lower both hoppers (Automatic)

Lower right hopper

Lower left hopper

Raise machine

Tilt machine left

Tilt machine right

Lower machine

Engage conveyor and cleaning

Menu button: access menu to set parameters

Adjust parameters within selected menu

Engage shaking system





### IntelliView™ IV plug and play

The ultra-wide 10.3in IntelliView™ IV color touchscreen monitor is fixed on a sliding rail which can move up and down the cab pillar to position it just where you want it. When compatible multifunction implements are connected, the IntelliView IV monitor automatically sets work pages for easier control and management of the machine.



### Row tracking system RTS

The optional RTS system uses GPS technology to map the rows on the IntelliView IV monitor, displaying harvested rows, missed rows and overlaps. Especially useful during night work and spraying applications.



### Grape weighing system

Two hopper versions of the 9000 series harvesters can be equipped with an optional grape weighing system. This option weighs the machine before and after unloading, providing a static measurement of grapes for logistics, press management, or global yield measurement. A dedicated weight performance screen enables weights to be added and calculates the average yield (per block, per trailer, per day, etc.) and enables better management of the harvested crop. A printer will provide a ticket of the weights shown on the screen, to record the harvested grapes weight.



Maximum engine speed setting

Minimum engine speed setting

Flow divider (if fitted)

Cruise control

Road mode

# Year round productivity.

The Braud machine has been designed to be used all year long, from pre-pruning to grape harvesting. A patented system to couple and uncouple the picking head and a front tool carrier provide the flexibility vineyards desire. Multifunction on demand software provides extra adaptability, allowing control of any implement through the multifunction handle and IntelliView™ IV screen.



## Multipurpose frame and ballast

The multipurpose frame can be attached within 10 minutes by one person. All hydraulic and electrical connections are grouped together for easy hook-up. In place of the picking head, the rear frame balances the machine correctly when multipurpose applications are being performed. With this frame, you will turn your new Braud 9000 into the perfect tool carrier, making year round vineyard work.



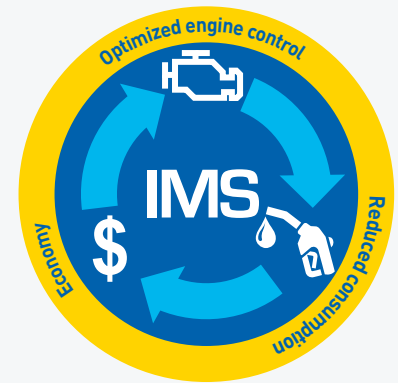
## Front tool carrier

Developed for the 9000 series models, the front implement carrier can be fitted by the operator quickly and easily. Implements, including a trimmer, pre-pruner and leaf-remover, can be fitted with fully integrated control via the IntelliView IV touch screen. The implement carrier telescopically adjusts both horizontally and vertically to suit the implements. It can be set to move away from the cab during a turn; its low attachment point avoids blind spots and ensures unobstructed right hand side visibility. A support stand enables easy detachment and storage of the multifunction arm when not in use.



## Multifunction on demand

Enables the operator to configure the work screen and allocate each button of the multifunction handle to activate the desired hydraulic/electric output to control any vineyard implement. In addition, the implement parameters can be run in a closed loop and managed by IMS 2.0, making improvements in fuel efficiency. The result: all functions can be activated via the Braud multifunction handle and IntelliView™ IV screen, please contact your New Holland dealership for implement compatibility.



## Fuel economy and high productivity

Thanks to the IMS 2.0 Intelligent Management System and the engine technology in the Braud 9000 models, the engine speed can respond to the demand placed on the machine, and the fuel consumption is lowered accordingly. The design and comfort of the New Holland carrier allows high working speeds, ensuring maximum productivity. The view from the cab is totally unobstructed to ensure the operator can comfortably work long hours.



Berthoud spraying equipment can be attached in less than 10 minutes by one person without any special tools, and is fully compatible with the IntelliView™ IV and multifunction handle. Combined with Blue Cab™ 4 technology and the IMS 2.0 system, Berthoud will convert your Braud harvester into the perfect tractor for spraying.



### **Pre-pruner MP 122 Provitis**

Pre-pruning head with two banks of shearing discs, with modular working heights from 19 to 39 inches.



### **Leaf remover LR 350 Provitis**

The frame is composed of two leaf removing heads, each head is equipped with hydraulic width adjustment. The optional A'Syst hydraulic system enables the leaf removing head to react better to the shape of the canopy for gentler and more accurate treatment of the canopy than typical spring loaded systems.



### **Trimmer ST 120 Provitis**

Adjustable cutting bars with 17 inch rotary blades, rotating at a speed in the range of 2000 rpm. The trimmer is offered in 2 models (one row or one and two half rows) with cutting heights of 48, 56 and 69 inches.

# 360°: Braud 9090L and X.

The Braud high capacity models have been designed to spend more time working and less time in the yard. All service points are easy to access, and long service intervals mean they will spend more time in the vineyard.



Both fuel tanks can be filled from the ladder for easy access.

Two piece engine hood opens wide for full service access: front hood flips up perfectly for accessing the engine, side door swings with a gas strut for cleaning and servicing hydraulics and coolers.

Cooling package opens out to make cleaning faster and easier.

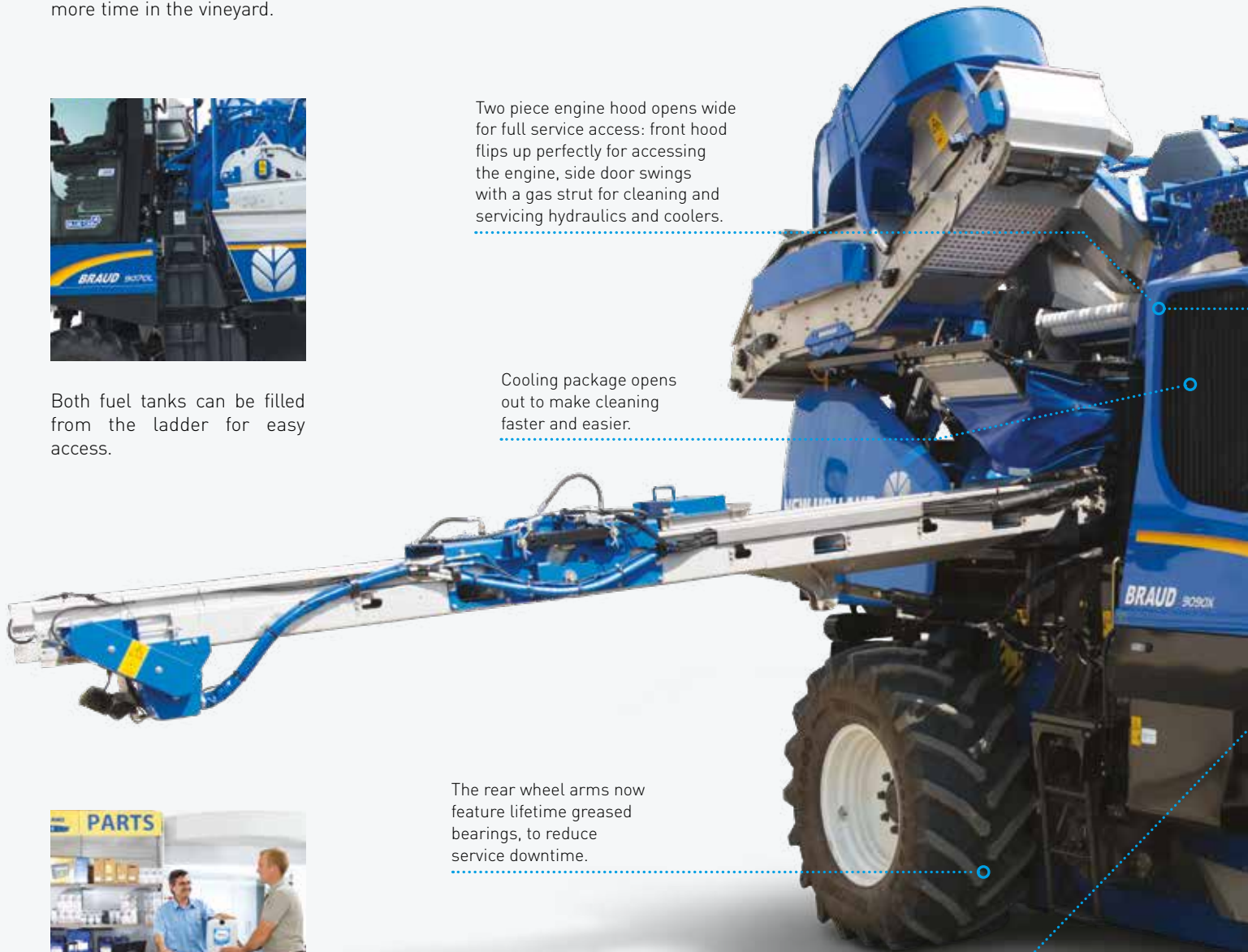
The rear wheel arms now feature lifetime greased bearings, to reduce service downtime.



### Will I be able to find parts easily?

Yes! It is available through your local New Holland dealer.

The engine air filter is easy to check, clean or replace, with no need for tools, and is accessible from the ground.





Washing has never been so easy! With a specially designed access platform, a water supply valve and hose, and washing buttons externally positioned on the cab pillar.

Both Cab air filters (Category 2 and 4) can be easily changed without tools, from the harvesting head platform. The IntelliView™ IV screen alerts the operator when the category 4 filter needs to be replaced.



Engine oil check and fill points are easy to reach. You will also be able to enjoy the long 600 hour service intervals that you've come to expect of New Holland.



### Dealer installed accessories

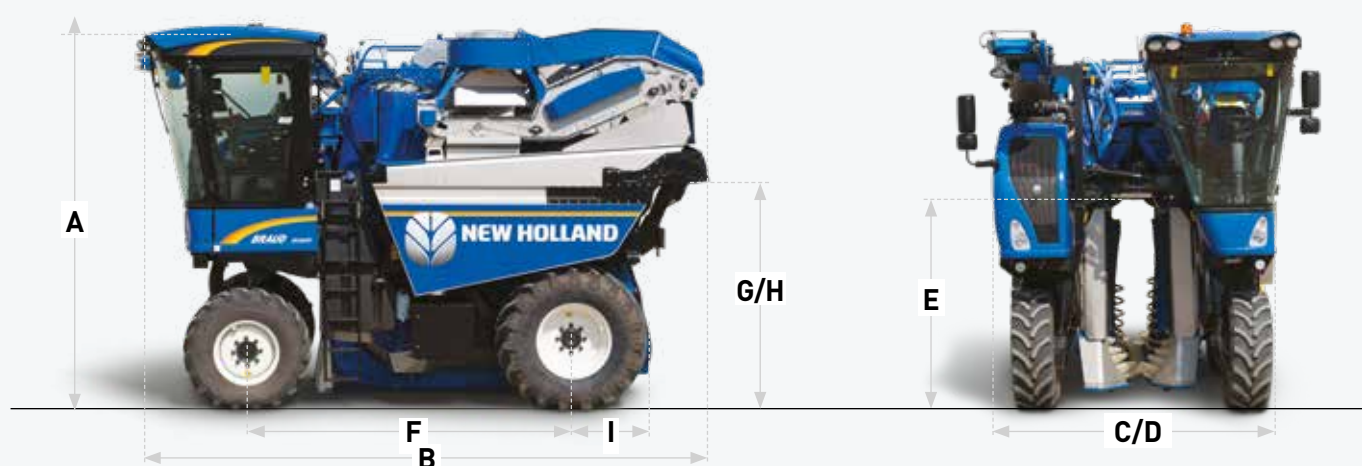
A comprehensive range of approved accessories can be supplied and fitted by your dealer.

Models		9090L twin hopper	9090X side conveyor	9090X twin hopper
<b>Vineyard row spacing</b>	m	2.0	>2.2	>2.2
<b>Clearance Max (machine fully lifted)</b>	m	2.6	2.97	2.97
Multifunctional grape harvester with Quick uncoupling		●	●	●
<b>Engine</b>				
Type		FPT NEF	FPT NEF	FPT NEF
Compliant with engine emissions regulations Tier/Stage		III/3A	III/3A	III/3A
Power ECE R120 - ISO 14396	hp [kW/(CV)]	175 (129)	175 (129)	175 (129)
Cylinders / Aspiration		6 Turbo with Intercooler	6 Turbo with Intercooler	6 Turbo with Intercooler
ECOBBlue™ SCR system [Selective Catalytic Reduction]		●	●	●
Reversible cooling fan		○	●	●
<b>Tractor base unit</b>				
Diesel capacity	L	270	270	270
Hydrostatic transmission with anti-skid system (Twin-Lock)		●	●	●
Road speed (25kph)		●	-	-
Heavy duty high-efficiency transmission, with 30 kph road speed*		-	●	●
Maximum steering angle	degrees	90	90	90
Front wheel torque limiter		●	●	●
Maximum slope (with auger)	(%)	39	39	39
Maximum slope (with destemmer)	(%)	35	35	35
Maximum slope (with Opti-Grape™)	(%)	25	-	-
Maximum lateral slope	(%)	30	30	30
IMS 2.0 - Intelligent management system 2nd generation		●	●	●
CDHA - Automatic height and lateral slope correction		●	●	●
Cruise control with radar		●	●	●
Electric park brake with brake pedal and seat button		●	●	●
Front multifunction tool carrier		○	○	○
<b>Harvesting head</b>				
Number of SDC shakers (standard rotation)		14	24	24
Flexible rear shaker fixation		●	●	●
Semi-Quick coupling of the picking head		●	●	●
Optimised shaking [electric pinch with quick release shaker plate]		○	-	-
Optimized shaking [hydraulic extra wide frame width adjustment pinch]		-	●	●
Quick release shaker plates		○	○	○
Sealed length of collection buckets	mm	2300	2499	2499
Number of collection buckets		2x63	2x68	2x68
Bucket size		XXL with 4 clips	XXL with 4 clips	XXL with 4 clips
Ground sensor for auto-leveling		●	●	●
No tool Noria tightening system		●	●	●
Hydraulic cane removers		○	○	○
Automatic swing lock system		●	●	●
Pre sorter roller on Conveyor		-	●	-
High capacity cleaning conveyors	mm	701	701	701
Upper cleaning fans with rear exhaust		●	●	●
Lower cleaning fans		○	●	●
Auger		●	●	●
Destemmer with easy rotor height adjustment system		○	○	○
Crop repartitor with non destemming from cab		Optional with Destemmer	-	Optional with Destemmer
Stainless steel hoppers capacity (liters)	gal. (L)	3600L	2000L on Left hopper	4000L
Side conveyor length	m	-	4.2 standard/5.2 optional	-
Pre-washing system with 6 nozzle rinse hose and valves		●	●	●
Washing remote control		●	●	●
Washing suits (2 size kit: M-L and XL-XXL)		●	●	●
Harvesting head centralized greasing		●	●	●
Progressive bin level indicator		●	●	●

Models		9090L twin hopper	9090X side conveyor	9090X twin hopper
<b>Cab</b>				
Cab inside volume	m <sup>3</sup>	2.23	2.23	2.23
Cab glass area	m <sup>2</sup>	2.27	2.27	2.27
Actuated access ladder and platform with light		●	●	●
Protective structure		ROPS code 4	ROPS code 4	ROPS code 4
Air conditioning and refrigerated box		●	●	●
Cab filtration system/category level [EN 15695]		●/2	●/2	●/2
Blue Cab™ 4 package**		○	○	○
Bluetooth radio with separated microphone (hand free phone calls)		●	●	●
2 integrated speakers		●	●	●
Adjustable armrest & multifunction handle		●	●	●
IntelliView™ IV touch screen monitor with adjustable position		●	●	●
Splitable color monitor for cameras		●	●	●
Cameras (color)		2 STD /+2 OPT	2 STD /+2 OPT	2 STD /+2 OPT
Steering column and adjustable pneumatic suspended seat		-	-	-
Heated and ventilated bi-color deluxe seat		●	●	●
Lights with dedicated Light Control Panel (LCP)		12	12	12
Mirrors with electrical adjustment		●	●	●
Right mirrors retractable		●	●	●
Front and back glass sunshades		●	●	●
<b>Premium Viticulture/PLM®</b>				
Row Tracking System GPS NH 162 (RTS)		○	○	○
Grape static weighting system with printer		○	-	○
PLM® Connect Telematics professional package		○	○	○

● Standard ○ Optional - Not available \* Only for market authorizing homologation

\*\* Blue Cab™ 4 package: Featuring Category 4 filtration [EN 15695-1 and -2], Automatic A/C, heated and ventilated bi-color deluxe seat, LED working lights, removable 12V Cooler



Models		9090L twin hopper	9090X side conveyor	9090X twin hopper
<b>Dimensions and tires</b>				
Front tires available		SW400/80 R24	SW400/80 R24	SW400/80 R24
Rear tires available		TW540/65 R28TL TW600/65 R28TL	TW540/65 R28TL TW600/65 R28TL	TW540/65 R28TL TW600/65 R28TL
A - Max. height with cab, harvesting head on the ground	m	3.69	3.93	3.93
B - Length max	m	6.0	7.75	6.0
C - Maximum width of base unit	m	2.99	3.18	3.18
D - Min width at the rear wheels (Narrow track if possible)	m	2.53	2.92	2.92
E - Ground clearance (under tractor frame)	m	2.00-2.60	2.20-2.97	2.20-2.97
F - Wheelbase	m	2.93	3.30	3.30
G - Maximum hopper tipping height, under hopper	m	2.70	3.10	3.10
H - Maximum hopper tipping axis height	m	2.88	3.28	3.28
I - Harvesting head back offset (from wheel axle)	m	0.65	0.95	0.95
Max useful shaker height - twin hopper / side hopper	m	1.27	1.50	1.50

New Holland.  
A real specialist in your agricultural business.



AT YOUR OWN DEALER



Visit our website: [www.newholland.com](http://www.newholland.com)  
Send us an e-mail: [international@newholland.com](mailto:international@newholland.com)



The data indicated in this folder are approximate. The models described here can be subjected to modifications without any notice by the manufacturer. The drawings and photos may refer to equipment that is either optional or intended for other countries. Please apply to our Sales Network for any further information. Published by CNHI INTERNATIONAL SA. Brand Marketing and Communication. - creative-farm.it - 04/18 - **AP18202N**