

# Compact Wheel Loaders

W40X | W50C | W60C | W70C | W80C







# A process of Evolution.

Versatile and compact, New Holland's C Series Evolution range of Compact Wheel Loaders offer a tailored fit solution for your farm. The updated range features a renewed cab interior with a 7-inch InfoView™ LCD display, screen navigation using a rotary encoder dial & a new easy to reach keypad for all relevant machine functions. Smart features such as ECO-Mode to save fuel or semi-automatic movements of the loader arm have been developed to increase efficiency and comfort. Alongside these Evolution updates, New Holland proudly introduces its first electric compact wheel loader, combining proven versatility and durability with the benefits of electrification such as significantly reduced noise and zero emissions.

## Low total cost of ownership

C Series Evolution diesel models feature an advanced 3.4 litre, 4-cylinder, Stage V F5H engine developed in house by FPT Industrial, who pioneered low emission, high efficiency solutions for on and off-road applications. This engine delivers high power and low fuel consumption with very low maintenance requirements. In addition, thanks to the maintenance-free Diesel Oxidation Catalyst (DOC) and DPF (Diesel Particulate Filter), the result is high performance and reduced total cost of ownership.

## High versatility

The choice of one or two auxiliary hydraulic circuits and the availability of high flow hydraulics in combination with creep speed allows work to be done at max. flow at a constantly low forward pace. All this makes the C Series Evolution a useful tool in a wide variety of basic and specialist applications from muck loading, yard sweeping or snow blowing.

## Superior performance

The superior hinge pin height and the contoured arms of the Long Reach boom of the W80C Evolution makes it easy to load at the centre of diet feeders and high sided trailers, without touching the edge. The automatic "Ride-Control" system engages at a speed of the operator's choice to prevent arm bouncing and to allow smooth travel at maximum road speed. All contributing to faster work-rates and less spillages.

## High precision

The Inch & Brake pedal progressively disengages the transmission in the decelerating phase while progressively engaging the brakes, giving the operator millimetric control of the machine at low speeds. The all-in-one joystick with proportional auxiliary control, flow memory button and F-N-R switch puts all the machine's controls in the operator's hand.

## Make your choice

The five models, four wheel drive, articulated steer range, with power outputs of 53hp-75hp, and full turn tipping loads of 1.9t-3.9t to a height of 3.08m-3.7m, offer high performance in a very agile package. The impressive performance figures are backed up by useful design features such as the low cab height of just 2.45m which make it ideal for access to low farm buildings and narrow feed passageways. Added to these compact dimensions is the tight turn angle made by the articulated steering system which makes it more manoeuvrable. The new cab design provides the operator a spacious working environment, with the four-pillar cab frame providing almost 360-degree visibility with minimal blind spots, these combine to make your working environment wide, bright and airy.

Models	Engine power [kW/hp(CV)]	Full turn tipping load with bucket (kg)	Hinge pin height (mm)	Hydraulic flow / High flow (l/min)	Operating weight (kg)
W40X	–	1941	3088	40	3880
W50C	43/58	2854	3137	67	4660
W60C	48/64	3269	3176	67	5100
W70C	55/75	3872	3289	85 / 130	5612
W80C	55/75	3924 - LR 3393	3395 - LR 3705	85 / 130	5980 - LR 6017



## Smart features welded to a versatile design.

C Series Evolution Compact Wheel Loaders are designed to maximise productivity and minimise the time needed for servicing and attachment changeover. With the powerful Z-kinematics, the New Holland wheel loader delivers consistently high levels of performance in every task. The S-shaped curved boom ensures greater reach when loading high trailers and better impact protection of the lifting cylinders against trailer sides. The V-shaped loader design enables better visibility of the headstock when switching attachments. In addition to the sophisticated design of the wheel loader, new smart features help the driver to carry out tasks more efficiently and comfortably.



### Quick coupler versatility

All diesel models can be specified with one of three different quick coupler headstocks, Universal, ISO or Euro, so that existing attachments can continue to be used or can be shared with other vehicles such as tractor loaders or skid steer loaders.

### Ancillary choice

With the standard auxiliary control circuit, a non-pressurised return line, an optional control circuit and high flow hydraulics with creep speed, the New Holland compact wheel loader is the ultimate multifunctional machine on every farm.

# Work smarter, not harder.

The smart hydraulic features make the operators life easier during repetitive loading tasks, by reducing fatigue and ensuring accuracy and efficiency is maintained throughout the day. Angle sensors on the loading system and the quick coupler recognise their position. Once the “return to” buttons are activated on the keypad and target positions are saved, the operator can simply actuate the features by operating the joystick in the relevant position. The smart hydraulics work independently of the attachments and memorises the target position even after engine restart.

## Return to Travel

- Sets the desired travel position of the loader arms to approach the stockpile



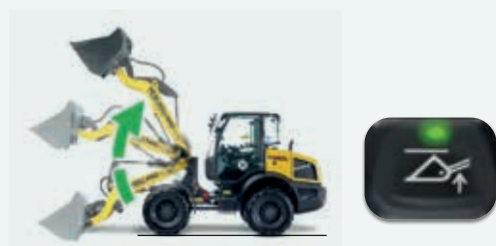
## Return to Dig

- Returns bucket to the desired angle for refilling
- Return to Dig and Return to Travel can also be combined so that the loading system lowers and the bucket swings back at the same time



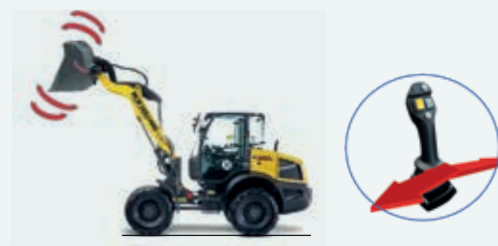
## Return to Height

- Sets the desired max. height of the loader arms to avoid trailer/feed wagon impacts and low doorways/cables



## Bucket Shake

- Accelerates the bucket tilt/roll back function automatically to quickly empty sticky residual material



## W80C Long Reach - Enhanced reach and lift height

- The flagship W80C model can be ordered with either a standard Z-Bar boom or the Long Reach alternative
- The standard Z-Bar offers a higher payload and shorter design, while the 40cm longer Long Reach arm offers a greater reach (+ 36.9cm) and loading height (+ 31cm)
- High trailers and feed mixers can be filled comfortably

# Engineered for maximum precision.

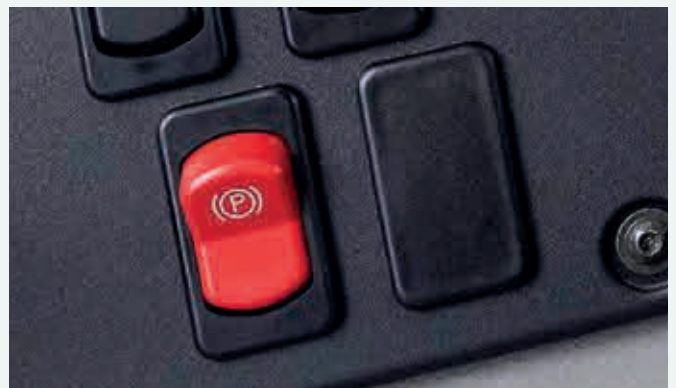
## Press & go hydrostatic transmission

All models in the range are equipped with hydrostatic transmissions, you just press the accelerator and go, smoothly and without fuss. Maximum road speed is 40kph when the optional High Speed is specified (W70C & W80C), which is more than fast enough to get from A to B around the farm or down the road. With the inching & brake pedal, more power can be diverted to the loaders hydraulics without disconnecting the drive, while maintaining a constant engine rpm, which is useful for tasks such as manure handling. A creep speed option is also available, whereby the travel speed can be set and adjusted in the 1-5 kph range, which is useful for yard sweeping applications.



## Millimetric precision

- The Inch & Brake pedal progressively disengages the transmission in the decelerating phase while progressively engaging the brakes
- Millimetric control of the machine is achieved at low speeds



## SAHR parking brake

- On the W70C and W80C a SAHR (Spring Applied Hydraulic Release) parking brake guarantees maximum driver comfort and safety





### Fuel saving ECO mode

- The new ECO-mode feature saves fuel and reduces noise, especially during road travel
- Activated by a button on the side console, the engine speed is limited to just 1700rpm, but the full power of the engine is still available when the hydraulics demand



### Creep Speed controllability

- The Creep Speed option allows the operator to maintain high oil flow at a very low speed range of 0-5kph
- The travel speed can be maintained with the drive pedal or via the cruise control function on the joystick, just like a car. Low speed, high oil flow applications have never been easier



### Cruise Control convenience

- Cruise Control feature allows the operator to maintain a selected constant speed without having to keep their foot on the accelerator, thanks to buttons on the joystick
- Ideal for road travel or slow travel applications like cold planning or road sweeping



### Excellent stability

- The rear axle on the C Series oscillates to a total angle of 18 degrees, improving both safety and stability
- Compared to a machine with an oscillating centre pivot, rear axle oscillation gives operators better perception of the machine's stability



### Differential choice

There are 2 differential configurations:

- Limited slip front and rear (all models)
- Open with 100% lock on front and rear differentials (W70C-W80C) for higher traction and reduced tyre wear



### Ride Control comfort

- The Ride Control system dampens vibrations and shocks from the loading arm to ensure driver comfort and reduction of unnecessary stress on the machine
- Ride control engagement speed can be set by the driver or switched off entirely



# Zero-emissions material handling.

The fully electric New Holland W40X combines the advantages of conventional wheel loaders, such as versatility, superior performance and high operator comfort, with the benefits of electric drive systems, such as zero emissions, significantly lower noise levels and a smaller CO<sub>2</sub> footprint. This makes the W40X the ideal choice for applications in enclosed buildings, noise-sensitive areas or in the immediate vicinity of people and animals.

Equipped with robust and tried-and-tested components, the W40X has a 23kWh Li-ion battery and two electric motors (17kW for the traction drive and 22kW for the working hydraulics) on board. Depending on the intended use, equipment, charging management and environmental conditions, most tasks can be mastered without any problems.

Specially developed as a zero emissions solution, the entire concept of the W40X was designed for efficiency without compromising on ability or robustness. To bolster efficiency & autonomy, the machine offers four driving modes, ECO, Standard, Power and Custom. To save as much energy as possible, the loader arm design has been optimised by reducing unnecessary weight while maintaining the machine's durability.





### The beating heart

The heart of the W40X is its 23kWh lithium ion battery and the associated battery management system, AC/DC converter, DC/AC inverter and charger. All components are protected from damage by the counterweight but are also easily accessible for daily checks or repairs.



### Multiple charging solutions

The W40X can be charged either via the 230V onboard charger with type 2 plug or via a choice of external 400V fast chargers with REMA plug rated for indoor or outdoor use. Both standard connections are located on the left side of the machine behind an opening panel.

		23kW battery
On Board charger	20% to 80%	6h
230 Volt, 16 Amp	0% to 100%	10h
External charger	20% to 80%	60min
400 Volt, 32 Amp	0% to 100%	100min



### Key information at a glance

The standard 7-inch InfoView™ display shows the driver all important information at a glance. Information on the battery and electric motors is also displayed such as charge status, battery temperature, utilisation of the electric motors or energy recovery through recuperation. In addition, the current charge percentage and the remaining time until the maximum charge level is reached are displayed during charging.



### Work modes to suit the job

The driver can select from three performance modes - ECO, Standard or Power mode and even tailor the machine performance to their preference using Custom mode. Custom mode allows the speeds of the hydraulic system and the traction drive to be individually configured. Each mode helps the operator conserve energy or deliver the required power depending on the application.



# Clean, powerful engines.

The entire range boasts 3.4 litre Common Rail F5H engines developed by FPT Industrial that comply with the stringent Stage V emissions regulations.

Advanced Common Rail technology delivers precise fuelling for optimal response and has also significantly reduced fuel consumption compared to previous models.

This super-quiet engine develops up to 75hp and up to 314Nm of torque for guaranteed productivity and operator comfort.

The entire combustion range uses Diesel Oxidation Catalyst (DOC) Diesel Particulate Filter (DPF) technology for Stage V compliance, which is maintenance-free and further enhances efficiency to reduce total cost of ownership.

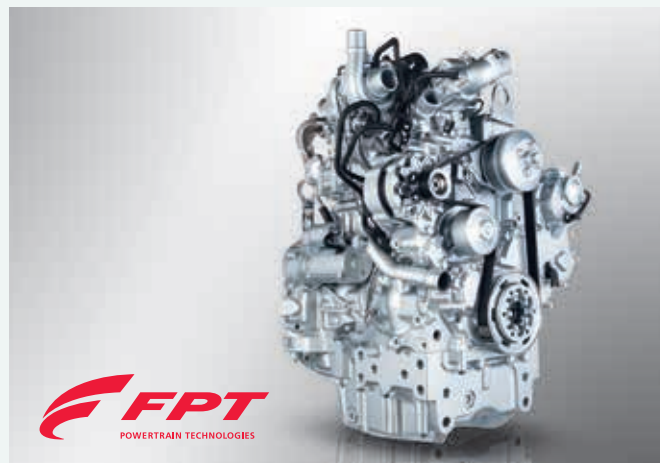


## Easy daily maintenance

All service points are easily accessible from the ground to provide simple and fast daily checks.

## Future proof

New Holland Compact Wheel Loaders are compatible with B7 Biodiesel, HVO (Hydrotreated Vegetable Oil) and all other XTL synthetic fuels (according to DIN EN 15940).



## Powered by FPT Industrial

New Holland are not going it alone when it comes to Stage V technology, they can draw on the experience of their in-house engine development specialist: FPT Industrial.

**Pioneers:** Common Rail technology developed by FPT Industrial at their R&D excellence centre in Arbon, Switzerland in the 1980s and brought it to the masses in 1997 on the Alfa Romeo 156. They were the very first to introduce it on agricultural machines on the TS-A tractor. Pioneering. Always.

**Cleaner:** For the eleventh consecutive year, CNH has topped the Dow Jones Sustainability World and Europe Indexes for the Industrial Engineering sector. Cleaner. Everywhere.

**Proven:** FPT Industrial have already produced over 345,000 F5C engines since the launch in 2007. Reliability. Confirmed.



# Setting new standards of productivity and versatility.

## Great power easily handled

- The ergonomic multifunction joystick falls easily to hand and houses all necessary functions for convenience and productivity:
  - Loader movements
  - Cruise control setting
  - Diff lock activation
  - 3rd /4th Aux switch
  - Aux activation
  - F-N-R direction change
  - Turtle/Hare speed splitter
- Loader hydraulic responsiveness can also be adjusted via the keypad buttons - smooth, moderate or aggressive



## Powerful hydraulic offering

- New Holland C Series Evolution Compact Wheel Loaders can either be equipped with a 3rd or 4th auxiliary control circuit to use attachments such as a silage grab
- Additionally, a return oil line and the powerful 130l/min high flow option can be installed on the larger models to run demanding attachments at creep speeds



## Power to get the job done

- On the W40X the hydraulics delivers max. 40l/min
- On the W50C and W60C the hydraulics delivers max. 67l/min
- On the W70C and W80C a choice of the standard 85l/min pump or the High Flow pump producing 130l/min is able to operate with cold planers or feed mixer buckets
- The High Flow option comes with the Creep Speed, and the front electrical socket and return de-pressurised drain

## Superior comfort and safety, enhanced.

Almost unobstructed 360 degree vision is offered by the updated four post cab. The elevated driving position and an abundance of curved glass within four narrow pillars ensure the best view around the machine. Access via the wide opening glass door is easy and straight forward, operators will appreciate the bright airy space and fully opening side window and low noise levels of 71dB(A). Further comfort includes 10 air vents, air conditioning, air suspended seat, tilting and telescopic steering column and useful storage compartments. All instruments and controls are positioned on the operator's right side and include an electrohydraulic multi-function joystick, with forward and reverse controls. The cab comes standard with ROPS and FOPS Level 2 protection guaranteeing your safety at work.





### All information at a glance

- The new 7-inch InfoView™ LCD colour display groups together all the important machine information logically and clearly
- Screen navigation is via the new rotary encoder for seamless access to menus and settings
- The screen also functions as a reversing camera display for increased safety when reverse travel is engaged



### Logical layout & fingertip control

- The right-side console houses all machine functions and features the new button keypad for a neat arrangement of important functions. Lights on each keypad button clearly indicate to the operator if the function is active
- The rotary encoder dial controls screen navigation and enables the operator to scroll through various screen menus to access and adjust parameters and choose settings
- Additional buttons on the keypad confirm selections, exit menus or activates the rear camera

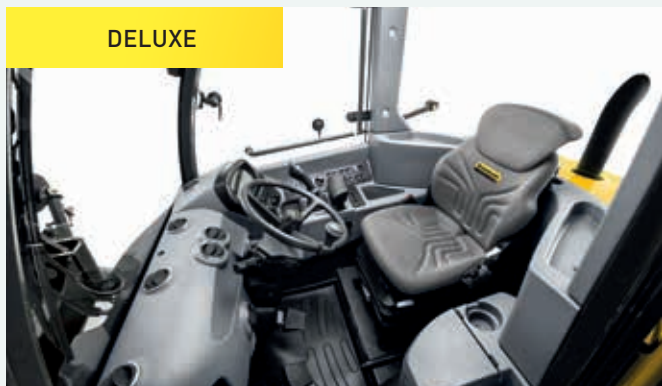


### Cab comforts

- C Series Evolution models come as standard with a closed cab including heating and ventilation with 10 outlets. As an option, a powerful air conditioning system is available
- To make long working days more pleasant, the machine can be equipped with a radio
- A 12V socket and a USB charging port are included as standard



#### DELUXE



#### BASE



### Base or Deluxe, it's up to you

Depending on the applications and requirements, the machine can be equipped with either the spacious and robust Base cab or the higher spec Deluxe cab, which includes additional storage compartments and plastic trim, an adjustable armrest, height & tilt adjustable steering wheel, and a right-hand side window that can be locked open 180 degrees. Both cabs offer the choice of air or mechanical seats.

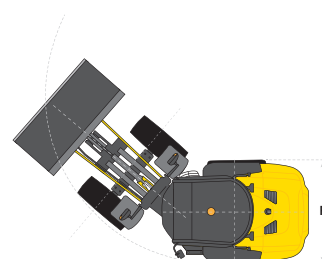
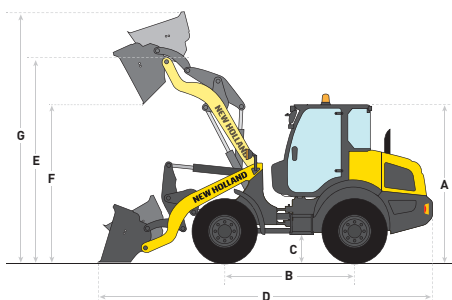
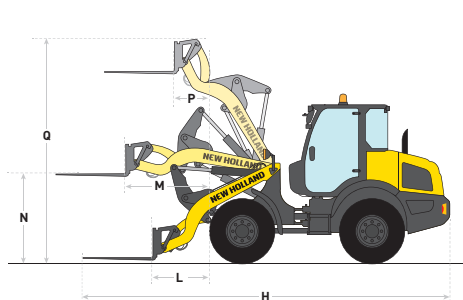
## 14 SPECIFICATIONS

Models		W40X	W50C	W60C	W70C	W80C
<b>Engine</b>						
Rated engine power – ISO 14396 – ECE R120	[kW/hp(CV)]	–	43/58 @ 2500rpm	48/64 @ 2500rpm	55/75 @ 2500rpm	55/75 @ 2500rpm
Max. torque ISO 14396	(Nm)	–	245 @ 1400rpm	261 @ 1400rpm	316 @ 1400rpm	316 @ 1400rpm
No. cylinders and valves		–	4 / 2	4 / 2	4 / 2	4 / 2
Displacement	(cm³)	–	3400	3400	3400	3400
Aspiration and injection		–	Turbocharged and high pressure Common Rail			
Exhaust gas treatment and exhaust level		–	ecEGR + DOC + DPF – Stage V			
Fuel tank capacity	(l)	–	86	86	86	86
<b>Work hydraulics</b>						
System type		Open centre				
Type of pump		Gear pump				
Main pump flow	(l/min)	40	67	67	85	85
Max. system pressure	(bar)	230	230	230	230	230
High flow	(l/min)	–	–	–	130	130
Hydraulics capacity	(l)	53	53	53	53	53
<b>Driveline</b>						
Type of transmission		Electric drive motor 17kW	Hydrostatic 4-wheel drive (2-speed)			
Max. speed (standard / high speed version)	(kph)	20	20	20	20 / 40	20 / 40
Standard tyres		10.5 -18	12.5 - 18	12.5 - 18	12.5 - 20	14.5 - 20
Oscillating angle rear axle	(°)	+/- 9	+/- 9	+/- 9	+/- 9	+/- 9
Differential lock front and rear		Limited slip	Limited slip	Limited slip	Limited slip / 100 % lock on front and rear	Limited slip / 100 % lock on front and rear
<b>Brakes</b>						
Service brake type		Drum type	Drum type	Dry caliper	Multidisc wet brakes	Multidisc wet brakes
Parking brake control and type		Mechanically actuated drum type	Mechanically actuated drum type	Mechanically actuated dry caliper	Spring Applied Hydraulically Released (SAHR)	Spring Applied Hydraulically Released (SAHR)
<b>Electrical system</b>						
Onboard voltage	(V)	96	12	12	12	12
Batteries capacity / Alternator	(Ah)	260	95 / 120	95 / 120	95 / 120	95 / 120
<b>Cab</b>						
Protection against falling objects (FOPS) ISO 3449:2005 – Level II		●	●	●	●	●
Protection against roll over (ROPS) ISO 3471:2008		●	●	●	●	●
Sound pressure level at operator's station – LpA – ISO 6396:2008	[dB(A)]	69	71	71	71	71
Outside sound power level – LwA – EU Directive 2000/14/EC	[dB(A)]	87	101	101	101	101



Models		W40X	W50C	W60C	W70C	W80C	
Dimensions		Z-Bar	Z-Bar	Z-Bar	Z-Bar	Z-Bar	Long Reach
<b>A</b> - Overall height	(mm)	2453	2458	2458	2627	2680	2680
<b>B</b> - Wheelbase	(mm)	1925	2075	2075	2225	2225	2225
<b>C</b> - Ground clearance	(mm)	395	444	444	440	493	493
<b>D</b> - Overall length with bucket	(mm)	5164	5297	5388	5623	5684	6130
<b>H</b> - Overall length with forks 1200mm	(mm)	5875	6000	6066	6246	6287	6731
<b>R</b> - Overall width w/o attachment	(mm)	1570	1740	1740	1860	1860	1860
Front wheel to QC	(mm)	984	957	1023	1001	983	1413
Turning radius	(mm)	3429	3721	3721	3987	3987	3987
Rear angle of departure	(°)	30	28	28	27	32	32
Specifications with forks		Z-Bar	Z-Bar	Z-Bar	Z-Bar	Z-Bar	Long Reach
<b>E</b> - Hinge pin height	(mm)	3088	3137	3176	3289	3395	3705
<b>L</b> - Reach @ ground level	(mm)	984	957	1023	1001	983	1413
<b>M</b> - Max. reach	(mm)	1431	1375	1428	1440	1445	1814
<b>N</b> - Forks height @ max. reach	(mm)	1296	1280	1278	1391	1395	1468
<b>P</b> - Reach @ max. height	(mm)	720	620	655	632	614	852
<b>Q</b> - Overall forks height	(mm)	2875	2924	2963	3129	3183	3537
Tipping load straight	(kg)	1699	2458	2857	3168	3430	2895
Tipping load at full turn (40°)	(kg)	1431	2109	2458	2811	2913	2652
Payload @ 80%	(kg)	1145	1632	1901	2249	2330	2045
Operating weight with forks	(kg)	3910	4615	5035	5559	5910	5917
Specifications with bucket		Z-Bar	Z-Bar	Z-Bar	Z-Bar	Z-Bar	Long Reach
<b>E</b> - Hinge pin height	(mm)	3088	3137	3176	3289	3395	3705
<b>F</b> - Dumping height	(mm)	2458	2500	2521	2598	2690	2969
<b>G</b> - Max. bucket height	(mm)	3902	3950	4011	4179	4322	4604
<b>P</b> - Reach @ max. height	(mm)	879	780	832	844	849	1082
Dig depth	(mm)	52	67	102	101	84	319
Bucket volume (SAE)	(m³)	0.5	0.7 - 1.0	0.8 - 1.1	0.9 - 1.2	1.0 - 1.3	1.0 - 1.3
Tipping load straight	(kg)	2300	3328	3806	4493	4625	3710
Tipping load at full turn (40°)	(kg)	1941	2854	3269	3872	3924	3393
Payload @ 50%	(kg)	971	1427	1635	1936	1962	1696
Breakout force	(kg)	2913	5434	5251	6241	6725	6218
Operating weight (std. bucket)	(kg)	3880	4660	5100	5612	5980	6017
Operating weight (4-in-1 bucket)	(kg)	–	4981	5427	5960	6340	6357

● Standard – Not available



# New Holland Top Service:

customer support and customer information.



## Top Availability

If you need information, or have an out of hours question, ring our toll-free number\*. All day, every day, we are just a call away.



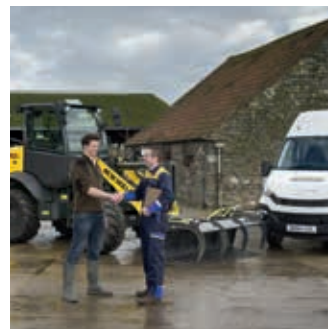
## Top Speed

Express parts delivery: when you need it, where you need it!



## Top Priority

Fast-track solution during the season: because your harvest can't wait!



## Top Satisfaction

We drive and track the solution you need, keeping you informed: until you are 100% satisfied!



### For more details, ask your New Holland dealer!

\* Calls to the Top Service team are free from landlines in the United Kingdom and Republic of Ireland. UK-based mobile calls are also free, but Republic of Ireland mobile users should call 01 2421881 and this will be charged at your standard network rate.

AT YOUR OWN DEALER

[www.newholland.com/uk](http://www.newholland.com/uk) - [www.newholland.com/ie](http://www.newholland.com/ie)



The data indicated in this folder are approximate. The models described here can be subjected to modifications without any notice by the manufacturer. The drawings and photos may refer to equipment that is either optional or intended for other countries. Please apply to our Sales Network for any further information. Published by New Holland Brand Communications. BTS Adv. - Printed in Italy - 04/25 - (Turin) - 244000/INB