

HAY AND HARVEST CATALOGUE



CASE IH

CONTENTS



INTRODUCTION.....	3	LIGHTS.....	20
AXIAL-FLOW COMBINES.....	4	GLASS.....	21
AFS CONNECT™.....	5	DOORS, MIRRORS AND FRIDGES.....	22
LARGE SQUARE BALER.....	5	GENUINE ENGINES.....	23
CUTTING PARTS.....	6	PRECISION FARMING.....	24 - 27
GATHERING, CONVEYING AND FEEDING.....	7	GRAIN MOISTURE TESTERS.....	28
CORN HEADER PARTS.....	8	MAGNAPOWER BATTERIES.....	29
FEEDER CHAINS.....	9	FILTERS.....	30 - 31
CROP FLOW.....	10	LUBRICANTS.....	32 - 34
ROTORS AND RASP BARS.....	11	REMAN PARTS.....	35 - 37
CONCAVES.....	12 - 13	REMAN TRANSMISSION TESTING.....	38 - 39
SIEVES.....	14	MOWER AND BALING PARTS.....	40 - 41
BELTS.....	15	BALESKIIS.....	42
CHOPPER KNIVES.....	16	HAY MOISTURE METERS.....	43
ELEVATOR CHAINS.....	17	MERCHANDISE.....	44
ROLLER CHAINS.....	18	TOYS.....	45
AGRICULTURAL TRACKS.....	19	REDXTEND.....	46 - 47

We understand how important uptime is to you during harvest. While there will always be external factors outside of your control, having the best equipment serviced at the right time with the right parts can help you eliminate downtime and get the most out of your harvest.

There are matters you can take into your own hands to improve your chances of an excellent final crop yield. The first secret to a successful harvest is having equipment you trust to perform. By purchasing genuine parts and high-quality equipment from Case IH, you've taken your first steps on the road to a successful harvest.



KEEPING PARTS IN ORDER

If you're looking for a helping hand, need some friendly advice or an expert opinion, our Case IH dealers are always happy to assist. An important part of harvest is checking that all your machinery's parts are in optimal condition.

All Case IH genuine parts are designed and manufactured to meet strict engineering standards and they are backed by warranty. Only genuine Case IH parts were made for your machine and designed to help maintain peak performance. All our genuine parts are designed to ensure that you avoid any operational downtime and make the most out of your harvest.

To further ensure you have the parts you need, when you need them, our Case IH dealerships all over New Zealand have invested in increasing their parts stock holdings. This is additionally supported by our breakdown assist and dealer hub programs to get critical parts to you in the shortest time possible.

SERVICE BY CASE IH

Only your local Case IH dealer is trained by the organisation that made your machine and is well-versed in the latest, most comprehensive service and diagnostic techniques. Your dealer can spot important maintenance issues before they become costly repairs and offer preventative maintenance and warranty plans that guarantee the lowest cost-of-ownership over the life of your machine.

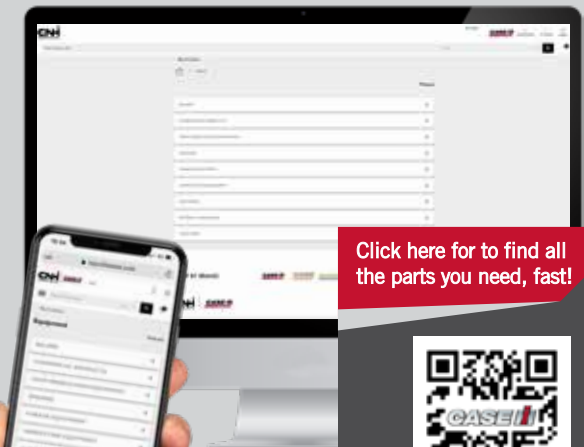
Case IH dealers can offer advice on selecting and financing the right machine, will ensure they deliver what you need when you need it, and will then continue to back you and your equipment with the service and spare parts backing you'd expect from a name as trusted as Case IH.

[Click here to find your local Case IH dealer.](#)



NEED A PART NUMBER?

You can now find the exact part numbers you need for your equipment via the MyCNHiStore. [Search by part number, model or category.](#)



[Click here to find all the parts you need, fast!](#)



AXIAL-FLOW® COMBINES

It's next level. It's here.

Axial-Flow® single rotor technology has led the industry since 1977, providing a simple design that produces superior grain quality and better value than any other combine on the market.

The Axial-Flow® 250 series is even more durable and efficient, with new features that add real value by simplifying operations, enabling consistency and reducing fatigue. With the AFS Harvest Command™ as a standard feature, it can even help the inexperienced operator produce results a seasoned campaigner would be proud of.

In real time, settings such as rotor speed, rotor cage vane angle, cleaning fan speed, sieve positions and more are continuously monitored and adjusted as conditions change, providing exceptional performance - without driver intervention.



SIMPLICITY

Axial-Flow® combines are designed with fewer moving parts for unmatched reliability and easier serviceability.

CROP ADAPTABILITY

Designed to harvest over 134 types of grains in many conditions. The Axial-Flow® combine is versatile enough to match your diverse harvesting needs.

GRAIN QUALITY

Gentle grain-on-grain threshing is the hallmark of the Axial-Flow® design. From feeding to cleaning, the entire system is designed to minimise grain damage.

GRAIN SAVINGS

Axial-Flow® combines pave the way for savings. Thorough threshing and efficient separation put more grain in the tank and more profits in your pocket.

MATCHED CAPACITY

Controlling crop flow is the key to harvesting success. The Axial-Flow® feeder, rotor, grain handling, residue management, and power systems are designed to optimise crop flow and maximise productivity.

RESALE VALUE

Axial-Flow® combines reward their owners with impressive resale value. A wide variety of kits are also available to enhance performance, upgrade technology, boost productivity and maximise your investment.

WANT TO KNOW MORE?

Scan or click here to find out how the Case IH Axial-Flow® combine can improve your operations.



AFS CONNECT™



Power, efficiency and the freedom to farm the way you want

Record-setting power and fuel efficiency, now with the power to remotely manage your farm, fleet and data. New Optum, Magnum and Steiger® AFS Connect™ tractors come with a five-year AFS Connect technology subscription.

Each day in agriculture delivers new challenges and opportunities. One constant is your desire for independence, mapping your own path and seeing your operation succeed. The freedom to act on your own choices also defines the new AFS Connect™ machines. For over 180 years, Case IH tractors have helped producers like you get more from the job in demanding conditions. Now, with the power of AFS Connect, we'll help you find new ways to maximise your yield potential and return on investment, while minimising your fuel consumption, work hours and stress.

TIME IS PRECIOUS. MAKE THE MOST OF IT

Whether you are in the cab or 300 kms away, you can connect to your AFS Connect™ tractor. From remotely monitoring your tractor to seamlessly transferring data to and from the tractor to trusted strategic partners — AFS Connect™ sets a new standard for what connectivity and productivity can mean to your farming operation. With AFS Connect™, you can view current field operations, fleet information, agronomic data and more anywhere from a computer, phone or tablet.

Learn more about the benefits of AFS Connect™ on page 24.



LARGE SQUARE BALER

Maximum productivity from day one

Each feature on our Case IH large square balers is designed to ensure you get crop off the field and into the stack as quickly as possible. Our large square balers have been developed by expert engineers with safety, efficiency and excellency at the forefront of design to provide you with the best equipment, robust enough to perform bale after bale, field after field, year after year, whatever the crop type or condition.

Our large square balers are designed to require the minimum of maintenance so that pre-work preparation takes up the minimum amount of time. That means you get out into the field sooner, getting more work done in a day and helping to ensure crop is gathered as quickly as possible before the weather changes.

Our LB4 series balers cover key baling sizes, and with packer and rotor cutter options, there is an LB4 baler to suit every farming and contracting operation.



LB4 balers were designed to make baling easy. Ground-level access to service points, easy adjustments, narrower transport widths and better visibility in and around the baler, and a sleek new design to better shed debris and keep knotters clean.

HIGH EFFICIENCY BALING

With ISOBUS III compatible tractors and feed rate control technology, it's possible for the implement to control the tractor's forward speed for the ultimate in efficient operation. The load imposed on the baler by the density of the windrow is continuously measured, and this information is used to regulate the tractor's forward speed, meaning the combination of tractor and baler is consistently operating at maximum capacity to maintain the highest productivity and minimise fuel consumption. This means not just lower baling costs, but greater productivity and less stress on the operator. Combine this with an industry leading 48 plunger strokes per minute for the ultimate in high efficiency baling.

CUTTING PARTS

Components engineered for superior compatibility and performance

To ensure you are getting the most out of your header, inspect your knife sections and guards to check they are not worn out. Blunt knife sections result in ragged, uneven cuts. While worn out guards may develop a round, lower cutting edge and an increased gap in the knife section which leads to crops being pinched rather than sheared. Both of which will lead to inefficiencies in your header operation.

Genuine Case IH knife sections and guards are engineered to complement one another and help your header achieve optimal performance.

Our knife sections are made with a special hardening process in addition to the cutting edges. This process is used throughout and on the back to the same hardness as the header wear plates and guards. This ensures a well-balanced wearing of all the components.



GENUINE CUTTING PARTS

- Our sections are made from a high-carbon steel with an induction-hardened cutting edge for superior wearability
- Top serrated sections are self-sharpening for a cleaner, smoother cut

BACK HARDENED SECTIONS

- The back edge of most Case IH sections deliver the same Rockwell hardness as the mating surface of the guard or wear plate
- The even wear-rate between the two mating surfaces eliminates the need for frequent adjustments



87702973

KNIFE SECTIONS AND KNIFE GUARDS FOR CUTTING PARTS



87728905



87298403

CROP LIFTER KIT

- Designed to lift down crop for maximum cutting efficiency
- Manufactured from 5mm thick spring steel for toughness and longer service life
- The locking clip can secure the lifter at three different heights for flexibility in a variety of crop production

Complete knife assemblies, knife sections, guards and kits are available for most grain headers and drapers.

GATHERING, CONVEYING AND FEEDING

Draper headers are meticulously crafted to facilitate seamless, head-first feeding of crops, ensuring a steady and reliable flow even in challenging, high-moisture harvesting conditions. To optimise performance and maximise productivity during part replacements, it is crucial to equip the header with high-quality components specifically engineered to complement the entire header system. By incorporating high-quality parts, the header operates at peak efficiency, enabling you to make the most of each pass and optimise your overall output.

POLY SKID SHOES

- Cut to fit
- Formed to shape
- Counterbored holes
- Designed for a perfect fit

These features prevent soil and debris build up on the underside of your combine head. The smooth, slick surface allows the head and cutterbar to run as low as possible, leaving the least amount of crop in the field.

- Tough, Durable, Slick and Lightweight.

Skid shoes made of UHMWPE have a molecular strength that provides abrasion and impact resistance for longer wear. Yet, they are lightweight and suitable for combines with larger heads.



47415647

BAT WING PADDLE TINE

The bat wing snap-on quick finger is designed to gather short or sparse crops. Paddle tines improve feeding and create a cleaner cutter bar to allow for faster harvesting.

The 150mm paddle width lifts and feeds crop that standard tines often miss. Allowing full crop contact to result in consistent feeding into the header.



73343962

The paddle tine is easy to install without needing tools. It attaches directly over existing mounted fingers.



DRAPER BELTS

Replace your worn out or damaged draper belts with genuine draper belts for efficient crop flow and keep your header at peak performance.

Genuine draper belts have increased material thickness for improved durability and feature an improved tapered cleat design for increased belt life.

FINGERS AND TINES FOR GATHERING AND FEEDING



86562205
Delrin® Plastic Tine



84333198
Picking Finger



84194057
Auger Finger

CORN HEADER PARTS

Poly Hoods and Dividers

INNER HOOD

Introducing our new and improved Inner Hood for your harvesting needs. This Inner Hood features a colour-matched high-strength polyethylene shell that is carefully designed to fit over a durable steel frame. The polyethylene shell offers exceptional resistance to cracks, dents, and rust, reducing the need for frequent maintenance and painting. With no spot welds to worry about, you can rely on the Inner Hood's superior strength and longevity.

Additionally, the smooth surface of the polyethylene shell enhances crop flow, providing you with improved performance in the field.



INNER HOOD

OUTER HOOD

Our outer hood is a versatile and reliable solution for your equipment. Each hood and divider in this collection is fully interchangeable with the existing steel assemblies, making it easy to upgrade your equipment without any compatibility issues. The outer hood also features a replaceable heavy-duty cast wear point, ensuring long-lasting performance even in demanding conditions.

To enhance crop management, the hood is crowned, reducing bunching and improving overall efficiency. Rest assured that our hoods and dividers are identical to the trusted 1000 series production assemblies and have been extensively field tested for quality assurance.



OUTER HOOD

GATHERING CHAINS

When it comes to your corn header, gathering chains play a critical role. It's essential to regularly inspect them for wear at the pins and readjust them to maintain proper tension. If you find that replacement is necessary, we recommend choosing genuine gathering chains. Our genuine gathering chains are specifically engineered with alloy steel pins that are hardened, tempered, and coated with chromium plating. This combination ensures optimal hardness, allowing the chains to withstand the demands of your harvest operations throughout the entire season. Trust in our genuine gathering chains for reliable performance and peace of mind.



84251979 GATHERING CHAIN



84526077 CROP DIVIDER

FEEDER CHAINS

Exclusively engineered to keep your combine operating at peak performance

Achieving maximum yield and profitability at harvest depends on getting everything right – the right plan, weather and equipment all working together. While you can't control every part of farming, you work hard to keep your business running at optimal performance with a well-maintained combine you can depend on. When it's time to replace your feeder chain assembly, you need quality and durability you can rely on.



ENGINEERED FOR EFFICIENCY

Pre-assembled quality: Our feeder chains come pre-assembled with consistent factory-grade torque throughout the assembly reducing installation time. While a competitor feeder chain tested, by an independent lab, reported mismatched hardware with up to +/-70% variability in assembled torque.

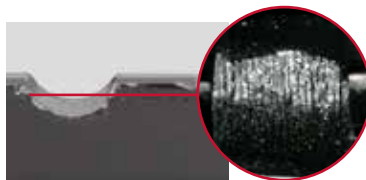


ENGINEERED FOR DURABILITY

Rolled serrations: Our slats are designed with serrations that are rolled into the slats. That's because laser cutting creates stress points in the slats. In fact, testing showed that a competitor feeder chain's laser cut slats tested at a tensile strength that is 24% less than our slats. Their weaker slats result in bending, uneven movement and side stress as loads are pushed to one side or the other.



OURS: Rolled for better durability.



THEIRS: Laser cut creates stress points.

ENGINEERED FOR CONSISTENCY

E-coated slats: Our slats use an e-coat painting process that utilises electrical currents to ensure a consistent application and prevent variation in hardware torque. Competitor feeder chain assemblies have poorly painted slats, which lead to clumped paint and inconsistent hardware torque – this negatively affects feeder chain life.



OURS: E-coated slats for smooth surface.



THEIRS: Uneven painted slats which impact torque.

ENGINEERED FOR VALUE

Dependability you can rely on: With Case IH, you'll replace your feeder chains less frequently, for a faster, more efficient harvest – all while reducing failure and preventing costly downtime. Choose our genuine feeder chains for higher, more efficient yields and ultimately higher profits.

ENGINEERED FOR RELIABILITY

Secure chain pin: When it comes to proper tension in feeder chains, chain pins are key to holding everything together. Without proper tension, a stretched chain will jump off the gear – causing damage to the combine. Test results show that competitor feeder chain pins push off with half as much effort as our pins, causing their chains to stretch or break.



OURS: Secured chain pin.



THEIRS: Chain pin becomes loose.

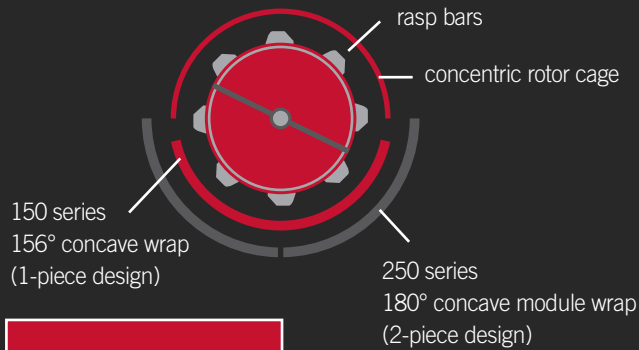
What's available at your local Case IH dealer:

- Chain assemblies for rock trap and non-rock trap models
- Chain links
- Smooth and serrated slats
- Rock trap conversion kits
- Feeder house parts and hardware

CROP FLOW

*Axial-Flow® 250 series AFX rotor configuration shown with optional straight bars.

SIDE VIEW OF ENTIRE ROTOR



For more information on concaves, see page 12

The **transition cone** smoothly transitions crop from feeder to rotor.

CROP FLOW

The **Axial-Flow®** rotor efficiently moves crop through the machine.

The active grain pan moves grain and material other than grains (MOG) to the cleaning system. The grain pan stratifies the grain from the MOG starting the separation process before it reaches the cleaning system.

Adjustable rotor vanes provide the ability to control crop flow in the rotor cage.

For more information on rotors and rasp bars, see page 10

For more information on sieves, see page 14

The **CrossFlow™** cleaning fan provides superior air flow across the entire sieve.

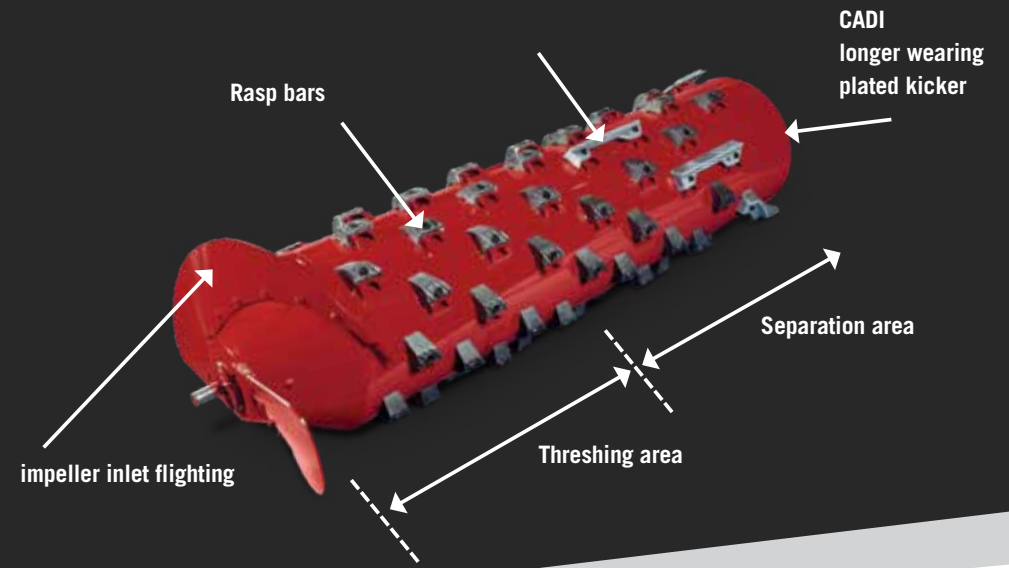
ROTORS AND RASP BARS

Over 40 years of industry leadership

Axial-Flow® single rotor technology has led the industry since 1977, providing a simple design that produces superior grain quality and better value than any other combine on the market.

The single in-line Axial-Flow® rotor coupled with a concentric rotor cage delivers gentle, multiple pass, grain-on-grain threshing and smoother crop flow - the hallmark of an Axial-Flow® combine.

The AFX rotor uses impellers, rasp bars, and helical kickers to efficiently move crop through the machine for more complete threshing and greater productivity. The constant pitch impellers provide more capacity, using less horsepower and less fuel.



Inspect and protect your equipment to maximise uptime and prevent grain damage.

Bars should normally be replaced when serration are worn down to approximately half a centimetre, especially for “hard-to-thresh” crops.

- Constructed from long-wearing nodular iron, then quenched and tempered to a specified hardness
- Rasps formed to shape for optimum threshing performance
- Specifically designed for your combine
- Specialty rasp bars are weight sorted to improve rotor performance.

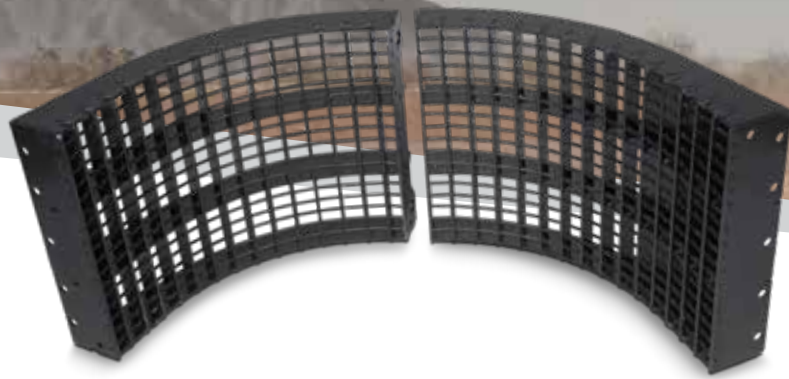
Cast chrome alloy rasp bar kits are available.

- 18-23% chrome for wear-resistance
- 10-50% heavier than competitors rasp bar
- thicker casting for improved toughness and wear
- leading edge is 0.79cm thicker plus added thickness in critical areas for improved toughness and wear resistance.



CONCAVES

Genuine fit for optimal performance



WHY DOES CONCAVE QUALITY MATTER?

Concaves are a critical component in the threshing stage of harvesting crops and work by separating the grain from the chaff. With such a vital role in the harvesting process, the quality of your concaves can directly impact the quality of your harvest. By fitting the right concave to your equipment, you can work more productively and more efficiently for greater profitability.

Using concaves specifically designed for your combine reduces stress loading onto other areas of the combine such as sieve overloading or increased tailings returns (where crops not completely threshed are returned to the main threshing cylinder).

[Click here to find all the parts you need, fast!](#)



WHAT'S THE DIFFERENCE BETWEEN GENUINE AND NON-GENUINE CONCAVES?

Unlike non-genuine concaves that are reverse engineered, our concaves are made for your machine by the expert engineers behind it. We use the latest robotic welding, machining, and heat-treatment technologies to ensure consistent dimensions, a better fit, and the highest quality threshing surface.

Our laboratory analysis has revealed that other suppliers tend to use lower carbon concentrated steel, have a reduced number of welds, shallower weld penetration and fewer cross bars. With our concaves you can expect high carbon steel and thicker components for greater durability and longer life.

Our concaves also feature drilled wire holes rather than punched holes used by competitors. This provides a tighter fit for the wires which prevents spearing and trapping of crops.

Finally, each and every concave is heat-treated and thoroughly tested for long-lasting strength. Our concaves must meet a set of stringent quality control assessments before being declared fit for use to ensure you have the best equipment to protect your harvest.

Benefits of genuine concaves:

- **Designed specifically for your combine.** A better fit reduces stress loading onto other areas and reduces the risk of grain damage.
- **Less downtime when it counts.** Made with high carbon steel and thicker components for a durable, long-lasting part.
- **Efficient functionality for faster threshing.** Our concaves thresh crops efficiently with minimal tailings return so that you can maintain a faster ground speed to cover more ground each day of your harvest.
- **Reduced clogging of crops.** The wire holes in our concaves are drilled rather than punched to prevent spearing and trapping of crops. Our range of concaves remove the seeds or grain from pods and thresh all types of crops including wheat, corn, oats, rye, flax and soybean.

Don't risk sacrificing your grain quality with inferior concaves. Instead, choose genuine concaves for the reliability and efficiency you need to maximise your harvest.



Small wire
Small grain



Large wire
Corn, soybeans and rice



Round bar
High moisture corn and rice



Large skip wire
Separating area



Slotted
Edible beans and sunflowers



Solid module
Easy threshing and separating



Hard-to-thresh kit
Cereal grains

Concave and grate models	Purpose
Small wire	For small grain harvest, grass seed, canola. Small wire concave is normally installed upfront in all crops and conditions, except large size crops.
Large wire	Use in large or high yielding crops or when less aggressive threshing is needed. It improves the separation. Use in all crops and conditions to obtain the highest capacity and throughput.
Round bar	Use in large or high yielding crops or when less aggressive threshing is needed. It improves the separation. Use in all crops and conditions to obtain the highest capacity and throughput.
Skip wire	Use in a large amount of crops or in high yielding crops to obtain maximum separation, throughput, and lowest loss.
Slotted grates	Helps to limit the amount of straw and chaff on the cleaning system and produce a better straw quality.
Smooth	Helps to limit the amount of straw and chaff on the cleaning system and produce a better straw quality.
Hard threshing kit	To use in crops and conditions which are very difficult to thresh.

SIEVES

Keep more grain in your combine with genuine sieves

Be sure to check the condition of the sieves in the cleaning shoe area. If sieves are worn or damaged this poses a risk of not getting clean samples. Keep more high quality grain in your combine with genuine sieves.

For better performance and peace of mind, purchase parts that are designed by engineers who know your machine best. Case IH genuine parts are designed and manufactured to meet strict engineering standards and are backed by warranty. You can trust that our range of genuine sieves will help you maximise your grain yield this harvest.

Only the genuine sieves work well with your combines active cleaning system so you can harvest clean, high-quality end product.



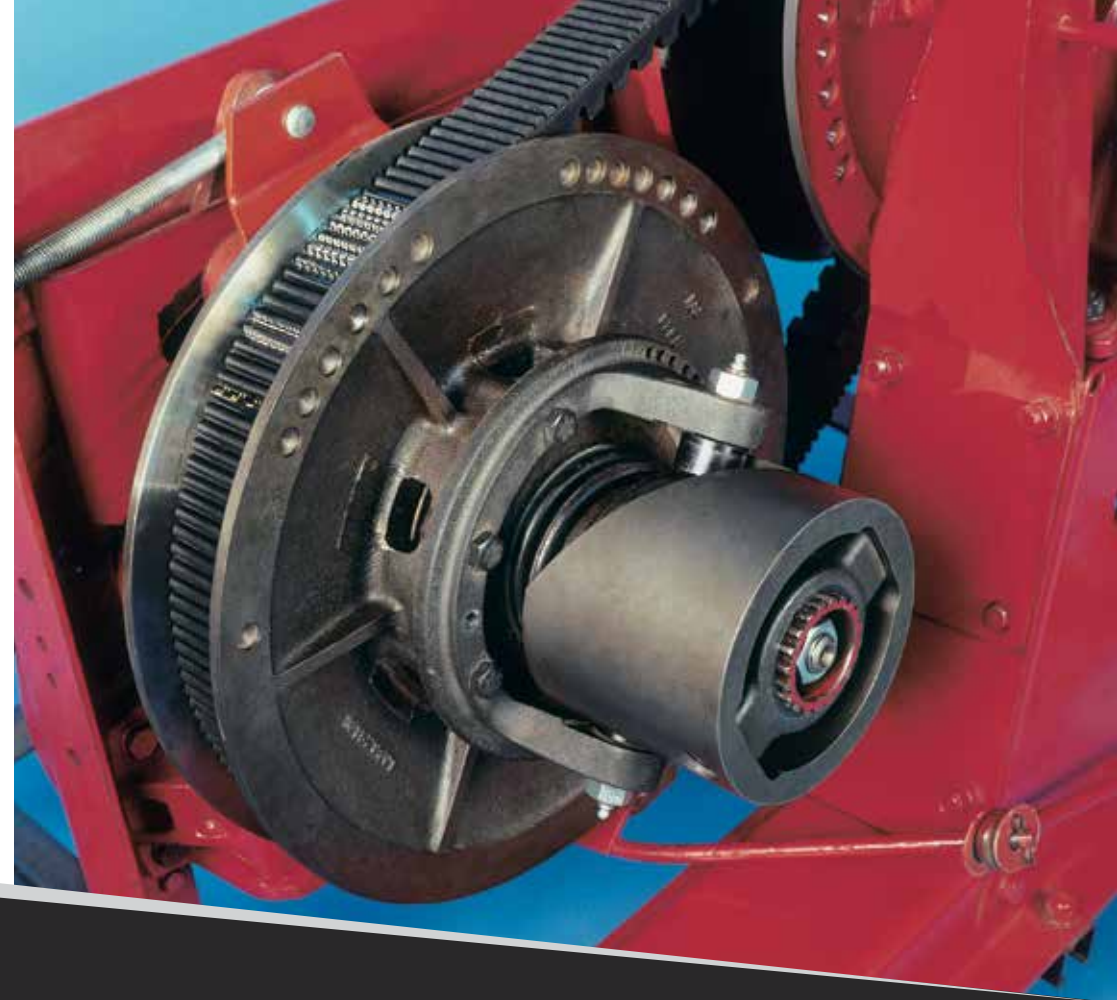
BELTS

Why choose genuine belts?

Our belts are specially designed by our engineers to meet the strict standards of each machine. This specialisation in our belts is just one of the defining factors that makes them superior to other non genuine options.

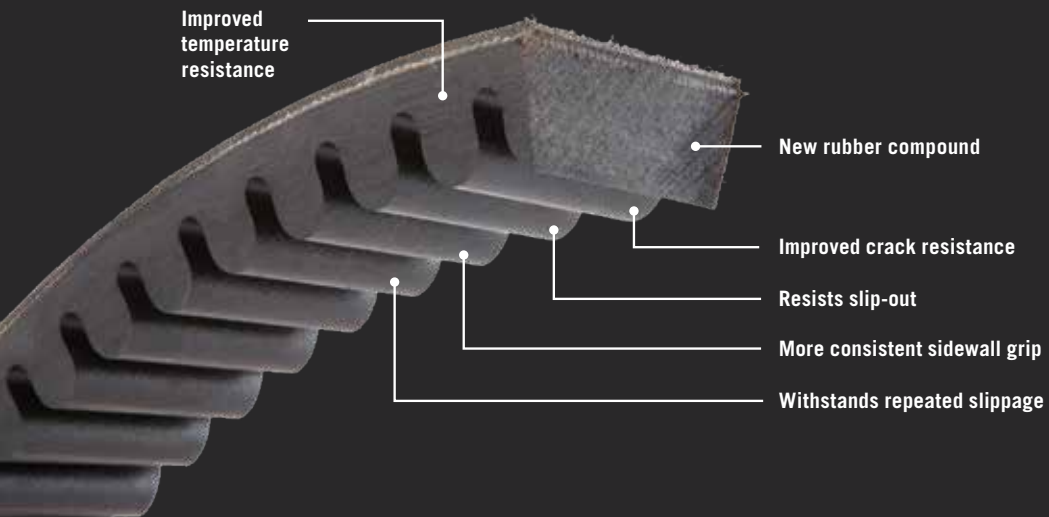
Our suppliers are chosen via a rigorous selection process that ensures we work with market leading companies, selected for their advanced technology and the high quality of the material used.

Our genuine belts are specially developed for heavy duty drives on farming machinery. They are robust and reinforced and are composed of materials that are both very flexible and resistant, specific elastomeric compounds and highly resistant cover bands. Giving you higher performance, higher reliability and a higher resistance to harsh conditions.



ROTOR BELTS

Designed for maximum performance and long life



HEAVY-DUTY ROTOR BELTS

Our heavy-duty rotor belts are constructed to carry higher loads with less chance of slippage. The heavy-duty rotor belts are recommended for all current and prior models of Axial-Flow® combines.

- Outer surface has a special cog design to help dissipate heat.
- In compression areas, the raw cog design provides aggressive power transmission, yet resists fatigue, cracking and heat build-up.
- Belt is up to 47% thicker for increased sidewall contact and maximum grip.
- With raw edge sidewalls, there is no cover to wear through; maximum belt wear life.
- Heavy-duty or regular-duty options.

CHOPPER KNIVES

Straw chopper knives are an integral component to the Case IH residue management system. These knives are manufactured to meet stringent specifications and tolerances, and feature a laser cladding wear preventive additive – the most advanced in the industry. The result is the most reliable and highest performing straw chopper blades for your combine.

FEATURES:

- Manufactured from high carbon steel for added strength and durability.
- Fully through hardened to optimal hardness ratings that ensure strength and impact resistance.
- Stringent manufacturing and quality assurance standards are met, including: raw material validation, dimensional analysis and destructive metallurgical examination.



87297764



CHOPPER KNIVES

- Provide unparalleled chopping in the heaviest of crop.
- Complete and ready to install.
- BT crops and higher residue call for more chopping power.
- More slicing and dicing of trash means quicker decomposition of residue.
- Less remaining residue means less disease pressures on your future crops.

Part Number	Description	Application
51635249	40-knife chopper	20 and 30 series
90411798	28-knife chopper	30 series

Chopper knives available as sets of blades, knife kits or conversion kits.



GRAIN ELEVATOR CHAINS

When it comes to your grain elevator chains, don't settle for anything less than genuine to achieve peak operating performance.



ENHANCED PERFORMANCE:

Say goodbye to interference or rubbing issues between paddles and housing or bearing flanges. Genuine chains ensure a seamless fit, optimising the efficiency of your grain elevator.

DURABILITY AT ITS FINEST:

Genuine chains are built to withstand the continuous grain handling process. Made from heavy-duty chain material, they are quenched and tempered according to CNH Industrial MAT 4050 standards.

This process guarantees the ideal hardness, providing the strength and longevity needed for reliable operation.

SUPERIOR PADDLES:

The paddles of genuine chains are crafted from the highest quality tire carcass and rubber.

This choice of materials ensures optimal performance, longevity, and resistance to wear and tear.

Choose genuine grain elevator chains to ensure you operate with peak performance and reliability. Don't compromise when it comes to the heart of your grain handling system. Trust the quality and expertise that comes with genuine products.



HEAVY-DUTY ELEVATOR CHAIN ASSEMBLIES

- We offer a complete selection of elevator chains for all Case IH combines.
- These heavy-duty roller chains feature a pre-lubed chain that reduces break-in wear and heavy-duty rubber paddles.
- #550 conveyor chain with heavy-duty rubber paddles allows material to move more efficiently.

ROLLER CHAINS

Excellent wear resistance with a long, reliable working life

Renold provides chain solutions for hundreds of applications coping with operating conditions that are hot or cold, wet or dry, dusty or requiring cleanliness. All of these solutions combine excellent wear resistance and fatigue resistance with a long, reliable working life. Working with Renold gives you access to a total care package for all your chain requirements.



The Renold precision steel roller chain is a highly efficient and versatile means of transmitting mechanical power, which, in the field of industrial applications, has almost completely superseded all other types of chains previously used.

All chains are classified according to pitch (the distance between the centres of adjacent bearing pins), roller diameter and width between inner plates.

Collectively, these dimensions are known as the gearing dimensions, as they determine the form and width of the sprocket teeth.

RENOLD SD - THE NEW “STANDARD” IN THE ECONOMY CATEGORY OF CHAIN

If you are looking for a good quality product from a reliable supplier for “standard duty” chain applications, look to Renold SD, the new benchmark in the economy chain category.

The Renold SD range offers:

- an extensive product line of European (BS), ANSI and DIN standard chains
- consistent quality.

RENOLD
Superior Chain Technology

RENOLD ANSI XTRA CHAIN - THE “HEAVY DUTY” CHAIN

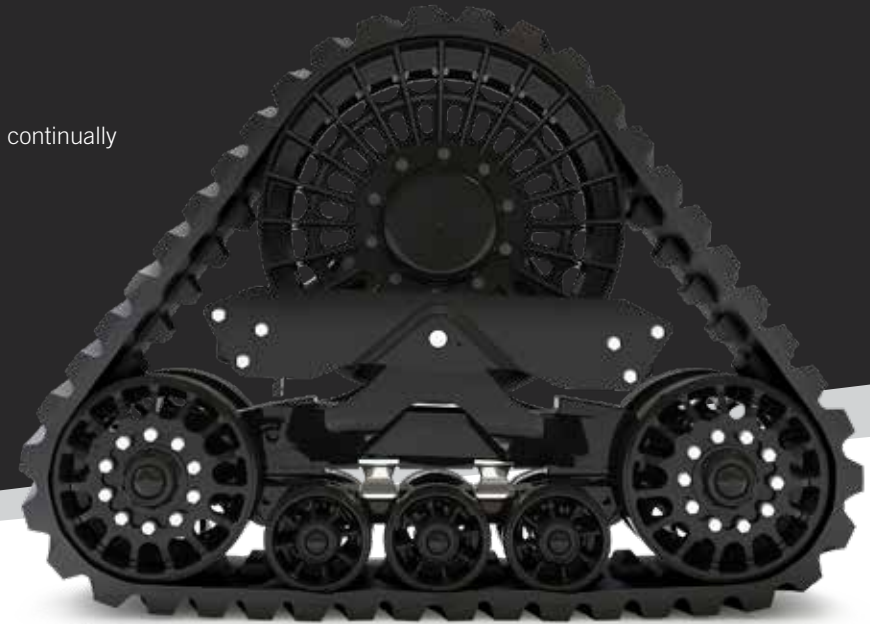
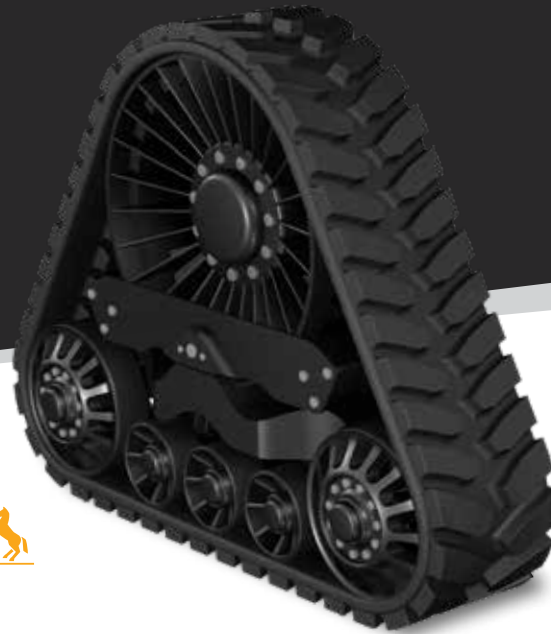
Renold ANSI Xtra chain incorporates the usual Renold performance enhancing features including seamless bushes, ball drifted plate holes, shot peening and optimum interference fits.

The Renold ANSI Xtra range consists of:

- **H RANGE** - Identical to standard Renold ANSI chain with the exception of the overall width. Thicker plates give this chain excellent resistance to heavy loads and help absorb shock. Duplex (2-strand) and triplex (3-strand) chain must have sprockets with an increased transverse pitch of the teeth.
- **V RANGE** - Identical dimensions to standard Renold ANSI chain but with a higher breaking load and excellent resistance to shock loads.
- **HV RANGE** - A combination of the ‘H’ and ‘V’ chain, giving excellent resistance to both heavy and shock loads.

AGRICULTURAL TRACKS

Today's largest, most powerful combines and tractors demand tougher and faster tracks. That's why we continually work with leaders in the design and manufacture of agricultural tracks to create the best offer possible.



THE FUTURE IN MOTION

Case IH chose Trackman® to create the world's first positive-drive track. Continental continue to deliver groundbreaking innovations resulting in the most rugged track out there. Continental tracks handle more horsepower and deliver better traction to pull more weight.

That means Trackman® can take on today's heaviest, most powerful tractors with total confidence.

TRACTOR TRACKS

Description	Continental Part Number	Soucy Part Number
252" x 30" AG	47826945	91748170
264" x 18" AG	91775763	51417162
264" x 24" AG	91775765	51446937
264" x 30" AG	91775766	51527550



SOUCY AGRICULTURAL TRACKS FOR EVERY TERRAIN AND SITUATION

Soucy are proud to introduce AceTrack™, the most durable track on the market. Based on its unique design and technology, the AceTrack™ is an unprecedented breakthrough in the farming world.

Allowing time and money savings as well as overall increased performance, Soucy tracks beat the heat, in real conditions and have been specifically designed and developed for your Case IH equipment.

The track profile responds to all types of terrain. In the field, traction is excellent to make travel easier, regardless of soil conditions.

On the road, the track profile is incredibly effective thanks to its properties that minimise overheating. The operator can count on transport speeds of up to 40km/h.



LED BEACONS PRODUCT ADVANTAGES:

LIGHTING

OPTICAL GROUP WITH 6 LEDS = EXTENDED LIFETIME

POLYCARBONATE DOME

UNBREAKABLE UNDER NORMAL CONDITIONS OF USE

IMPROVED WEATHERPROOFING

PROTECTION AGAINST DUST AND HUMIDITY STANDARDS

GENUINE LIGHTS

Genuine lights are guaranteed to fit, built to last and allow you to work, day and night.

Optimum visibility is the key to boosting productivity at night while working in complete safety. Adequate lighting is essential to ensuring excellent visibility. Genuine lights and bulbs guarantee optimum lighting at all times.

WHY CHOOSE GENUINE LIGHTS AND BULBS?

When you choose our genuine lights and bulbs, you can expect:

RELIABILITY: Lights that have been approved and guaranteed to offer the same standard of quality as the component that was originally installed.

DURABILITY: Genuine lights are guaranteed to last longer as they are made using top-quality raw materials and have a high resistance to vibrations.

PRECISION: Genuine lights can be installed more quickly and with greater precision, as the presence of matching hooks reduces fitting times. Genuine bulbs provide a precise and intense source of luminous power at all times, exhibiting high resistance to sudden changes in voltage and always consuming the correct amount of voltage.



TEST 1 - RESISTANCE TEST

Shock resistance, unbreakable domes

The polycarbonate dome means the genuine beacon dome is virtually unbreakable.



TEST 2 - LIGHT INTENSITY TEST

Light intensity: + 30 %

The genuine flashing beacon consists of an LED group which ensures optimum distribution of the light beam and high visibility.



TEST 3 - WEATHERPROOF TEST

Optimum protection against dust and humidity

The high protection rating (IP65) of Case IH flashing beacons offers excellent weatherproofing against external elements including dust and water.



GENUINE WINDOWS

Safety starts with a clear view

To stay safe at all times while operating your machine, optimum visibility through your cabin windows while in the cabin is essential.

Scan here for to find all the parts you need, fast!



ALL CASE IH GENUINE WINDOWS ARE MADE FROM SAFETY GLASS THAT IS EITHER:

TEMPERED (ESG)



- Safety glass processed by controlled thermal or chemical treatments. This increases the strength versus 'normal' glass.
- Stronger resistance to impacts, blows, scratches or other possible damage meaning the glass is less likely to break.
- And even if it breaks, it will do this in tiny fragments with rounded edges, this will reduce the risk of injuries.
- Due to these tiny fragments, other material damages by glass break is almost impossible. So you and your cabin are perfectly protected.

LAMINATED (VSG)



- Zero risk of injury or material damage as the glass will not shatter into the cabin.
- Dangerous objects such as rocks can't be catapulted into the cabin in case of impact. The PVC film in the glass will keep objects out.
- Better sound insulation thanks to the acoustic PVC compound interlayer in the glass, meaning less noise will enter the cabin while operating the machine.
- Created by two layers of glass that are glued together by PVC film, which binds all the glass together in case of breakage.



WHY CHOOSE GENUINE WINDOWS?

Case IH genuine windows are the only products capable of ensuring maximum quality in:

Safety: all genuine windows are made from either tempered or laminated glass. These offer greater stress and impact resistance, providing more effective protection in the event of breakage.

Comfort: genuine windows have been designed and tested specifically for use in cabins. They filter UV rays to reduce the temperature inside the cabin and limit the deterioration of all the internal parts.

Ease of fitting: products that have been approved and guaranteed offer the same quality and dimensions as the component installed when the vehicle was manufactured. Handles and seals are fully compatible, enabling you to save time.

DOORS, MIRRORS AND FRIDGES

If it's genuine, the quality is guaranteed

MIRRORS

Your safety is our number one priority. That's why we offer an extensive range of high-quality, genuine mirrors. We want you to have clear vision throughout this year's harvest, whenever or wherever you are working.

Our range of genuine mirrors include:

- complete side mirror assemblies
- complete rear-view mirror assemblies
- replacement mirrors (glass only)
- mirror arms (without glass)
- glass seals
- hardware parts.



DOORS

Keep your machine's doors working like new with our wide range of genuine parts. For small repairs, only replace what you need with our wide range of genuine hardware, seals and more. For larger scale repairs, we have complete door assemblies available. These complete assemblies include all the components you need to replace a door which means less time spent waiting on parts, quicker installation time and less downtime when it counts.

Our range of genuine door parts include:

- complete door assemblies
- cab glass door
- door handles
- door seals
- hardware parts.



PORTABLE ELECTRIC FRIDGE

When you're out in the field, there's plenty of tough days when you're battling the sun, wind or rain. Sometimes you need to take a breather, grab a cold drink and admire your work before getting back to the grind. When you're spending so many hours a day in the cab, it's nice to have some little luxuries for your home away from home.

Our genuine portable electric fridges fit under the instructional seat to save room in the cab. Powered by your combine's 12V outlet, you can choose to keep your food warm or cold during the day. The portable design makes it easy to remove for cleaning and to take home and restock for the next day.



48062995

GENUINE ENGINES

Our engines are at the forefront of technology. The tasks in a farm are varied and sometimes very complex, but nothing is impossible with the right technology on a tractor if powered by one of our genuine engines. Depending on the requirements of the mission, they can adopt variable-geometry and two-stage turbochargers, high-pressure Common Rail injection, patented after-treatment systems and more.

Our genuine engines have been vigorously tested and improved to exceed growing requirements in performance and efficiency, while complying with stricter emission regulations.



Part Number	Application
5801509339	Steiger 450, 500
5801507161	Quadtrac 450, 500
5802499078	Combine AF 7240, 8240, 9240
5801793848	Magnum 280, 310, 340, 380
5801507162	Quadtrac 550
5801490158	Combine AF 7230, 8230, 9230

ADVANCED FARMING SYSTEMS

Advanced Farming Systems (AFS) is precision technology that improves productivity and agronomic performance while minimising waste. It's how we define Case IH high-efficiency farming: efficient use of time, resources and inputs.

Built directly into your Case IH equipment, AFS delivers intuitive precision farming solutions that connect each phase of crop production into an interdependent system. The result – precision down to the square centimetre that increases overall efficiency and maximises yield potential.



AFS CONNECT™

AFS Connect™ advanced farm management system gives you instant access to information for every machine in your fleet – including machine location, diagnostics, and fuel and engine stats. Use it to manage operator and equipment performance and monitor real-time data to make informed decisions that impact your bottom line.

KEY FEATURES OF AFS CONNECT™:

- **Graphic Reports** show area worked, yield average, flow average, moisture average and more.
- **Custom Alerts** allow producers to create alerts for maintenance, geo-fencing, curfew and more.
- **Fleet Management** pinpoints the exact location of each machine.
- **Machine Dashboard Monitoring** allows producers to view real-time machine parameters from a remote location. Monitor engine speed, oil temperature, coolant temperature and level, hydraulic oil temperature and pressure, fuel and more.
- **Vehicle and/or Implement Data Monitoring** lets producers view real-time equipment performance data, including yield, moisture, singulation, target rates, rotor speed, engine speed and more.
- **Data Sharing** seamlessly transfers AFS data wirelessly between your machines and home office or trusted adviser. Upload prescriptions directly to your machine and drive daily management decisions based on your current agronomic data.



GUIDANCE SOLUTIONS

EZ-STEER® ASSISTED STEERING SYSTEM

EZ-Steer® is an assisted steering system providing portable, hands-free farming for more than 1200 vehicle makes and models - old and new. The EZ-Steer® system turns the steering wheel for you by combining a friction wheel and a motor with guidance from any compatible display. It keeps your vehicle online for efficient, low-stress steering capabilities for your farming applications.

FEATURES:

- Integrates directly into the steering column for clear access to cab control
- Allows for unrestricted manual steering when assisted steering is not engaged
- Utilises terrain compensation technology for high accuracy on difficult terrain
- Ideal for both low-accuracy broadacre and high-accuracy row-crop farming applications
- Complete field applications quickly and accurately
- Reduce operator fatigue and increase safety
- Operate day or night and in dusty or low visibility conditions

TERRAIN COMPENSATION TECHNOLOGY

EZ-Steer® uses T2® sensors to calculate the actual position of the vehicle to help minimise skips and overlaps in areas with rolling terrain, slopes, and rough ground.



EZ-PILOT® PRO GUIDANCE SYSTEM

The EZ-Pilot® Pro guidance system offers high accuracy guidance across MFWD tractors, 4WDs, and combines. The added benefit of the EZ-Pilot® Pro system is that vehicles are now able to be engaged in reverse to allow them to be lined for the next swath (max 15 seconds). Adding this feature allows users to benefit from a high accuracy solution from the second the implement engages with the soil.

FEATURES:

- High accuracy at an affordable price
- Vehicles can be engaged in reverse for up to 15 seconds
- Vehicles stay engaged while stopped
- Reduced hardware makes transferring between vehicles even quicker



AUTOPILOT™ MOTOR DRIVE AUTOMATED STEERING SYSTEM

Electric, hands-free, automated steering system with easy installation onto steering column, delivers highly-accurate, Autopilot-level steering. Autopilot™ Motor Drive, controls tractors and harvesting machines without hydraulic components up to RTK accuracy. No matter your vehicle type the Autopilot™ Motor Drive system can be quickly installed from one vehicle to another and steers your vehicle on line for maximum precision.

FEATURES:

- Sub-centimetre accuracy inertias from the NavController III
- Slow speed and reverse operation
- Eliminates the requirement for an AutoSense™ or a steering angle sensor
- Autopilot performance without the requirement for hose installation or the need for special tools
- Simple installation similar to the EZ-Pilot system
- Easy to transfer between vehicles
- Available for a large, expanding range of vehicles

TERRAIN COMPENSATION TECHNOLOGY

Autopilot™ Motor Drive uses T3™ sensors to calculate the actual position of the vehicle to help minimise skips and overlaps in areas with rolling terrain, slopes, and rough ground.

PRECISION FARMING

Rethink precision farming and connectivity with our display range

Our display range is ISOBUS compatible and all displays run the Android based Precision IQ operating system. Each featuring a bright HD LCD touchscreen, easy-to-use interface, modular architecture, and rugged construction, our displays make for precise and effortless operation that suits all manner of farming operations - all at your fingertips.



PRO 1200

The Pro 1200 display is designed for intuitive navigation to maximise control and automation in the cab. Featuring an easily customisable multi-touch screen with superior HD anti-glare visibility, day or night and a familiar Android-based interface. Remote display viewing connect operators with farm managers seamlessly, and Bluetooth capabilities pair the display with a mobile device for an intuitive user experience that rivals the latest smartphones and tablets.



- 30.5cm high definition, multi-touch screen display
- Tablet based user interface and new menu structure
- Full glass front that is easily readable in all light conditions
- ISOXML data import/export
- ISOBUS compatible
- Create headlands from boundaries and create inner and outer trigger zones
- Compatible with AFS Vector Pro Receiver and P&CM



XCN-2050™

The XCN-2050™ huge 30.8cm HD colour touch-screen and customisable interface allows you to move and turn widgets on and off to meet their desired set-up. Driven by the familiar Android™ system, it offers stability and reliability within the same environment as mobile devices. Its rugged construction is designed to cope with the harshest environments.

- Customisable tablet-like interface similar to mobile devices
- Choice of configurations with Precision-IQ™ and FM-1000® Plus display software
- 30.8cm high definition colour touch-screen display
- Rugged construction for everyday field use
- One integrated camera with support for an additional external camera
- Easily transferable between vehicles

It's your real-time farm management decision making tool in the cab.

XCN-1050™

The XCN-1050™ 25.6cm display is designed to quickly become an indispensable part of any agriculture machines' operation. With a HD multi-touch display and intuitive Precision-IQ™ interface, this tool allows the operator to quickly and easily configure and manage their farming operations effortlessly.

Tackle farming applications for every season with the XCN-1050™ display system with our most advanced GNSS receiver to date the NAV-900 guidance controller. Built for maximum uptime and a wide range of accuracy options from basic to high precision. It is designed to mount on the roof of most agricultural vehicles to provide positioning and guidance, including autosteer to give more robust performance in areas where satellite visibility may be obstructed.

- 25.6cm display high resolution multi-touch display
- Precision-IQ™ user interface
- IP66 rated app central™ and internet browser

GRAIN MOISTURE TESTERS

Moisture affects quality.
Know when it's the ideal
time to harvest.

WHY TEST MOISTURE?

Moisture is the single most important factor influencing the quality of grain. Moisture management is a continuous process that requires the appropriate measuring tools. Protect your investment by testing moisture content before, during and after the season. Our moisture testers operate accurately and quickly, measuring moisture in the field, bin or barn.



PORTABLE GRAIN MOISTURE TESTERS

Tester name	MT-PRO+	MT-PRO™
Part number	73342898	B96649
Number of grain scales supported	40	40

MAGNAPOWER™ BATTERIES

Made for New Zealand's toughest environments

Did you know?

The number one killer to all batteries is vibration. Extended vibration can crack battery welds and plates, causing electrical shorts. Another leading cause of battery failure is exposure to high temperatures which can result in batteries discharging more or undergoing sulfation (the crystallisation of lead sulfate) which reduces the batteries ability to charge.

What is the benefit of using a premium battery for my equipment over a standard car battery?

MagnaPower™ premium batteries are built for the harsh conditions agriculture equipment is exposed to when bouncing across a field or job site. MagnaPower™ batteries also contain larger and heavier lead connections than typical off-the-shelf batteries. They utilise a unique epoxy bonding design to secure the internal grids to prevent shorts caused by excessive vibration and shocks.

How can you get the most out of your batteries?

In agricultural settings, batteries are often stored for longer periods of time (for example between seasons) and we would recommend investing in a professional charger to monitor the ongoing health of your batteries or should your battery need a kick start.

What makes MagnaPower™ batteries stand out from the rest?

- LifeGrid™ technology for consistent performance
- Large inter-cell connectors provide superior vibration protection
- Heavy-duty container for maximum durability
- Epoxy anchor bonding for improved strength



Talk to your Case IH dealer for more information on our extensive range of batteries for passenger vehicles, SUV/4WD/light commercial vehicles, heavy-duty trucks, motorcycles and marine applications.

FILTERS



ENGINE OIL FILTERS

DID YOU KNOW?

Case IH engine oil filters:

- are 70% more efficient in filtering critical contaminants using our MicroLoc™ synthetic media compared to paper-based media
- allow filtered oil to reach the engine quicker with improved cold flow
- deliver high soot tolerance and dirt-holding capacity for greater filter life.

For best performance, always use with genuine Case IH engineered engine oil.

FUEL FILTERS

DID YOU KNOW?

As fuel travels through a typical fuel system, it picks up dirt and water. A typical litre of fuel can contain over five million contaminants.

Few things impact equipment productivity faster than a low-quality fuel filter.

Extremely high injection pressures and tight tolerances of today's low-emission engines make them highly sensitive to even the smallest amount of water or contaminants. With pressures as high as 30,000 psi, contaminants act as an abrasive jet, capable of eroding fuel pump and injector surfaces.

THE 30-60-90 HORSEPOWER RULE

Off-road equipment generates more usable horsepower – 30% more than on-road trucks and 60% more than automotive engines. Tighter tolerances and higher temperatures than ever before result in severe duty cycles. Therefore, off-road engines require high-quality filtration and increased durability.



30%
HORSEPOWER
USAGE



60%
HORSEPOWER
USAGE



90%
HORSEPOWER
USAGE

CASE IH ADVANTAGE

Today's tier four certified engines require fuel to be 100x cleaner than engines built just a few years ago.

Case IH fuel filters feature advanced design and go through extensive testing to optimise equipment protection and performance.

- MicroLoc™ synthetic media delivers high-efficiency filtration that removes up to 99.7% of contaminants.
- 2x more dirt holding capacity extends the service life of your equipment.
- Offers better injector and fuel pump protection by eliminating more contaminants than competitor filters.
- Patented self-venting drain valve on fuel/water separators dramatically improves removal of free and emulsified water.

As fuel travels through the typical supply chain, it picks up dirt and water that is harmful – or even deadly – to your engine.





ENGINE AIR FILTERS

DID YOU KNOW?

A typical diesel engine requires more than 3,000 litres of clean air for every litre of fuel it burns. The better an engine can breathe, the better it can work.

Case IH works diligently to specify particular filter requirements.

- Filter media, materials, seals and design features are engineered specifically for the machine to which they are fitted.
- As an example, one of Case IH's flagship platforms has 42 different air cleaner filter specifications associated with design and performance.
- Will-fit filters do not integrate with whole machine performance system design.
- Initial savings with a will-fit filter may end up costing your customers much more when repairs are needed.

HYDRAULIC FLUID FILTERS

DID YOU KNOW?

Hydraulic pumps are sensitive to contaminants as small as 10 microns – that's 10x smaller than a grain of table salt.

Without proper filtration, equipment can experience:

- slips
- rough shifts
- brake system chatter
- critical failure of internal components, such as excessive gear wear.

A vast majority of hydraulic component failures are caused by dirt particles.

Up to 70% of these failures can be prevented with proper filtration.

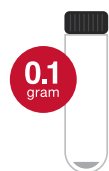
Only Case IH hydraulic filters have up to a 99.9% efficiency at a lower micron rating compared to the competitor.

For best performance, always use genuine Case IH engineered hydraulic transmission fluid when recommended by the operator's manual.

CASE IH ADVANTAGE

It only takes a few grams of dirt to dust an engine.

Compare how much dust can pass through an air filter during 500 hours of operation.



CASE IH MICROLOC™ FILTERS

MicroLoc filter media
99.99% efficiency.



CASE IH STANDARD FILTERS

Standard filter media
99.9% efficiency.



AFTERMARKET FILTERS

Standard filter media
99% efficiency.

CASE IH ADVANTAGE

FILTER	CAPACITY (G)	CASE IH GENUINE PARTS ADVANTAGE	AVG. PRESSURE AT FAILURE (PSID)	CASE IH GENUINE PARTS MIN. SPEC (PSID)	CASE IH GENUINE PARTS ADVANTAGE
Competitor	130	48% greater capacity	189	200	26% stronger
Case IH Genuine Parts	193		239		

Results from a field test of Case IH filter (84226263) versus competitor filter (ISO 16889).

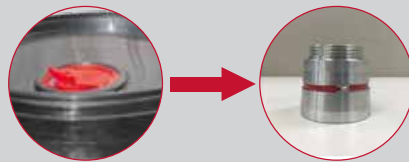
GENUINE LUBRICANTS

NOT SURE WHICH LUBRICANT PRODUCT TO USE OR HOW MUCH?
 Visit Lube Lookup, our online tool to assist you in identifying the lubricants and volumes required for your Case IH equipment.



DID YOU KNOW?

We have designed pail adapters to aid in fitting most oil transfer pumps into your 20L genuine lubricants pails.



These pail adapters help keep the pour spout upright for ease in pumping.

Ask your dealer for more information.



WHAT DOES THE MAT NUMBER ON YOUR OIL CONTAINER MEAN?

The MAT designation on your oil container is what differentiates it from the competition. It certifies that genuine Case IH engine oils have passed our series of stringent, internal tests. The internal technical standards that are applied in testing go above and beyond the minimum API requirements – demanding more from our products. As a result, MAT specifications are used to test and approve all lubricants to ensure they exceed industry standard, meet the demands of machines and help extend component life.

That's why the Case IH choice for oil is documented in the operator's manual and approved for warranty claims. Only those MAT specified oils can make that claim.

NO. 1™ ENGINE OIL

As a safeguard against premature wear, our genuine No.1 Engine Oils™ have been specifically engineered to new, next generation MAT 3571, 3572, 3622 specifications. Our oils have been extensively tested to provide maximum protection in oxidation and aeration control, shear stability and proven performance life for the heavy-duty, high-temperature operation of agricultural and other off-road diesel-powered equipment.

No.1 Engine Oil™ SAE 10W-40 API CK-4 MAT 3571



NZ73394542 NZ73394624 NZ73394541

No.1 Engine Oil™ Super SAE 15W-40 API CI-4 MAT 3622



NZ73394622 NZ73394623 NZ73394533 NZ73394534

REMEMBER THE 30-60-90 RULE

Your machine runs at 30% more usable horsepower than on-road trucks and 60% more than automotive engines.

That's why it's critical you choose the right oil, engineered and formulated specifically for your machine.

Choose Case IH Genuine Lubricants.

HY-TRAN® HYDRAULIC TRANSMISSION OIL - PREMIUM

We first began developing Hy-Tran® oil for our own equipment back in 1964. Our oil has undergone extensive testing and several upgrades to improve performance and is now considered to be an industry standard.

When you use Case IH Hy-Tran® hydraulic transmission oil - premium, you're guaranteed best in class water tolerance, top-of-the-range torque transfer for smoother longer-lasting operations, and industry leading shear stability for less frequent oil top ups.

What equipment can I use Hy-Tran® hydraulic transmission oil - premium for?

Our Hy-Tran® hydraulic transmission oil - premium is designed to keep tractor transmissions, axles and hydraulic systems free from deposits while inhibiting wear, corrosion, sludge and foaming. By utilising the latest anti-wear additives, our oil is formulated to provide premium performance and protection for all generations of equipment - from legacy to CVTs.

Our Hy-Tran® hydraulic transmission oil - premium is designed specifically for your Case IH equipment by the expert engineers behind it.

Why is water tolerance so important?

Moisture contamination in oil can be detrimental to your machinery causing a range of issues from parts corrosion and premature oxidation to sediment build-up and the clogging of filters or even the acidification of your oil.

Our Hy-Tran® hydraulic transmission oil - premium features industry leading water tolerance with the unique ability to hold up to 1% of its volume in water to prevent damage to your equipment - from legacy to CVTs.

Features and Benefits:

- **Superior oxidation stability:** Less oxidation under heat prevents metal deposits and corrosion, extends component life and reduces downtime
- **Superior shear stability:** Provides advanced wear protection for transmissions and implement pumps by maintaining its viscosity when subjected to high temperatures and extreme pressure
- **Superior wear protection:** Less wear for longer component life compared to the competition
- **Water tolerance:** Ability to hold up to 1% of its volume in water helps prevent rust, sticky hydraulic valves, flow restrictions and pump cavitation

Hy-Tran® Hydraulic Transmission Oil - Premium



NZ73394639



NZ73394634



NZ73394521



NZ73394522



HYPOID GEAR OIL EXTREME PRESSURE

Our Hypoid Gear Oil formula is designed to help prevent deposit formation and maximise oil drain intervals without compromising on protection. Our genuine gear oil contains a unique additive package, developed specifically for our machines to keep your equipment operating at it's peak performance.

Gears in agriculture equipment are subjected to immense pressure which without the proper lubrication, can lead to breakdown in the lubricant film resulting in scuffing at high temperatures. The unique formulation in our genuine gear oil is designed to withstand the extreme temperature and pressure of agriculture applications to sustain a long-lasting lubricant film between the gear sets to prevent the dry contact between surfaces which leads to premature wear.

By using only genuine gear oil, your differentials and gear sets are better protected for increased performance under extreme pressure and extended equipment lifetime.

Features and Benefits:

- High load capability, anti-wear and extreme pressure properties extend equipment life
- Reduces maintenance costs under severe conditions
- Thermal and oxidation stability extends seal life and increases service life of equipment and lubricant

Hypoid Gear Oil Extreme Pressure SAE 80W-90 MAT3516-A



NZ73394568

Hypoid Gear Oil Extreme Pressure SAE 85W-140 MAT3516-B



NZ73394575

GREASE AND COOLANT



OAT EXTENDED LIFE COOLANT

For use in tier 4 final/stage V and back

This long service life coolant/antifreeze is based exclusively on a synergistic combination of Organic Additive Technology (OAT), providing excellent overall corrosion protection. Suitable for all heavy/light duty diesel, natural gas and gasoline engines, this formulation is approved by our engineers under the new next-generation MAT 3724 specifications and provides superior high temperature protection in extreme conditions.

It protects cooling system metals including brass, copper, solder, steel and cast iron against rust, corrosion, and deterioration, and also fights against deposit build up and cylinder liner cavitation.

OAT Extended Life Coolant/Antifreeze - Premix MAT 3724



NZ73394595



NZ73394604



GREASE

Our grease is formulated with numerous additives to enhance and maintain consistent performance against high temperatures and extreme pressure. This includes:

- antioxidants
- anti-wear
- extreme pressure additives
- friction modifiers
- dyes
- anti-weld and solid.



Multi-Purpose 251H EP Grease Anti-Wear/NLGI 2 MAT 3555-A



NZ73394600

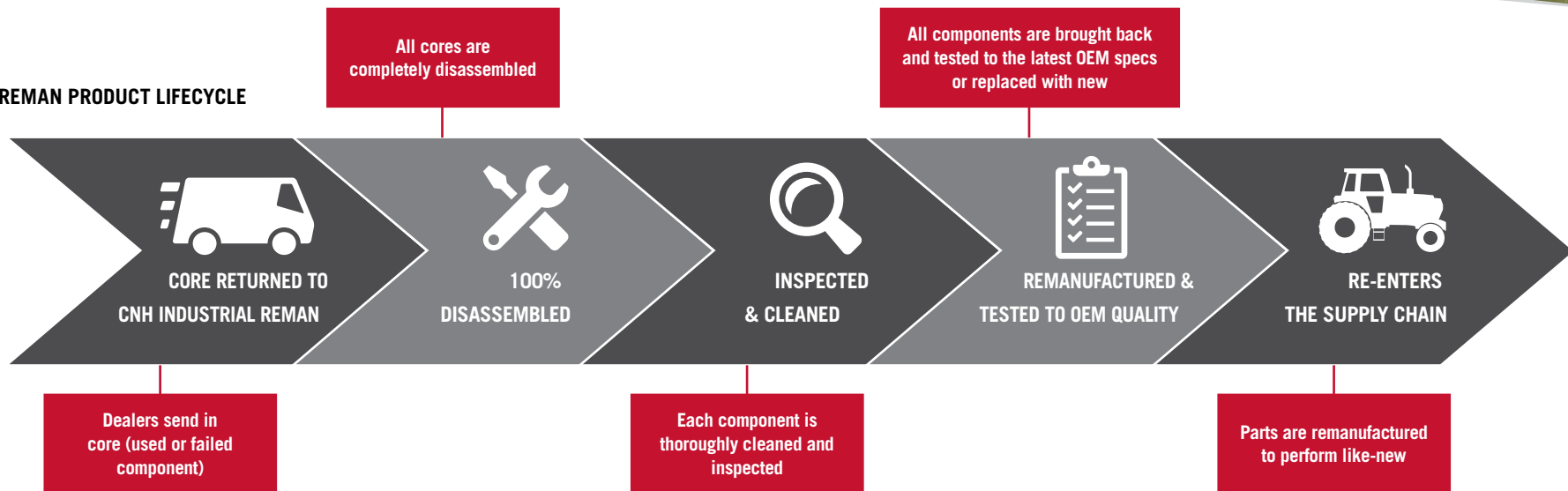
REMAN PARTS

Our history

CNH Industrial Reman is a joint venture between what is now CNH Industrial and Springfield Remanufacturing Corp. The partnership brings together CNH Industrial Parts & Service product expertise, access to equipment, and dedicated dealer networks with SRC's remanufacturing operations, capabilities, and expertise. CNH Industrial Parts & Service is the parts and service arm of the larger company that also includes Case IH. CNH Reman, later called CNH Industrial Reman, was formed on December 31, 2009 and has added an average of 600 new products every year since. The remanufacturing facility is located in Springfield, Missouri and includes a tech centre, distribution centre, and call centre.



REMAN PRODUCT LIFECYCLE



REMAN

• LESS DOWNTIME WITH INSTALLATION OPTIONS

Because many of our remanufactured parts are ready to install, service technicians spend less time completing repairs or shop installs.

The result? Quicker turnaround and a whole new level of equipment uptime for you.

• OEM PERFORMANCE

Our remanufactured parts are engineered to deliver like -new performance that meets stringent Case IH performance specifications.

• SIGNIFICANT SAVINGS

Our remanufactured parts are competitively priced, offering great value while ensuring peak performance.

• QUALITY

Our remanufactured parts are completely disassembled. All parts are thoroughly inspected and reassembled to the latest OEM specifications.

ENGINES

- Long block
- Short block
- Replacement engine

ROTATING ELECTRICAL

- Alternator
- Starter motor

ENGINE COMPONENTS

- Cylinder head
- Crankshaft
- Camshaft
- Crankcase
- Connecting rod
- Water pump
- Oil cooler

FUEL

- Fuel injection pump
- Fuel injector

AC COMPRESSOR

TURBOCHARGER

BLOWER MOTOR

ROLLER WHEEL



ELECTRONICS

- ECU
- Joystick
- Monitor

HYDRAULICS

- Hydraulic pump
- Hydraulic cylinder
- Hydraulic motor

DRIVELINE

- Axle
- Clutches
- Final drive
- Gearbox
- Transmission
- Torque converter

REMANUFACTURED PARTS FOR YOUR MAGNUM TRACTOR. GREAT QUALITY, EXCEPTIONAL VALUE. OUR GENUINE REMAN PARTS ARE THE SMART WAY TO KEEP YOUR MACHINERY AS GOOD AS NEW.

REMAN

Why choose Reman for your equipment



Today, there are more reasons than ever to choose remanufactured parts from CNH Industrial Reman for your equipment. From more product offerings to less downtime during installation, you're sure to appreciate the unique benefits of choosing reman. If you're new to remanufactured parts from CNH Industrial Reman, here are some great reasons to make our parts a key element in your ongoing equipment maintenance program.

INCREASED UPTIME

Increase uptime with drop-in assemblies. There's no need to waste time and labour hours on complicated rebuilds that could yield unanticipated problems and costly surprises.

RELIABILITY, NOT LIABILITY

CNH Industrial Reman remanufactured replacement parts are engineered specifically for Case IH agriculture equipment, minimising risks and improving mechanical dependability.

BETTER FOR THE ENVIRONMENT

Remanufactured parts require up to 85% less energy to construct than new parts. Reman parts save energy and natural resources.

SUPERIOR WARRANTY PROTECTION

CNH Industrial Reman remanufactured replacement parts carry a superior warranty protection, so equipment owners like you can enjoy peace of mind knowing we've got you covered.

GOOD AS NEW

Whenever possible, a component is machined and brought up to the latest specifications to ensure the product is as good as new. Plus, remanufacturing allows us the benefit of hindsight. As parts are received at the core centre, failure trends are identified so improvements can be made on both the remanufactured part as well as the new part design.

LOWER TOTAL COST OF OWNERSHIP

Our remanufactured parts are competitively priced, offering great value while ensuring peak performance.

CONSISTENT PRODUCTION AND CONSTANT COMMUNICATION

CNH Industrial Reman remanufactured replacement parts are built by trained technicians who build hundreds of the same products each year, not just one per season or lifetime. The reman team are in constant communication with the original equipment manufacturer (OEM) which allows us to accommodate changes in the remanufacturing process in any changes they may release.

THE PARTS YOU NEED

There are thousands of CNH Industrial Reman remanufactured replacement parts available for over 20,000 applications. We're adding more parts to our already extensive Reman roster all the time. This expanded offering gives you more options for your equipment needs.

GENUINE REMANUFACTURED PARTS

Reman parts are engineered specifically for Case IH machines to give you better peace of mind.



REMAN TRANSMISSION TESTING

- Test all components to OE specification
- Rotationally and functionally tested in real-world conditions
- Testing protocol sets transmissions apart from rebuilt and repair options.

CNH Industrial Reman test all components according to OEM specification prior to leaving our facility, ensuring operational reliability and durability. All our genuinely remanufactured transmissions are rotationally and functionally tested to simulate components under a load, like conditions in the field or on the job site. For the transmission test bench used at CNH Industrial Reman for the higher horsepower Fuji transmissions, each test has unique parameters set according to the OEM. Our precise testing process and high standard sets our transmissions apart from rebuilt or repaired components.

NEED A PART NUMBER?

You can now find the exact part numbers you need for your equipment via the MyCNHiStore.

Search by part number, model or category.

Scan here for to find all the parts you need, fast!



REMAN TRANSMISSION TESTING

CNH Industrial Reman is dedicated to producing quality components designed to meet OEM specifications. The Fuji Test bench tests clutch packs in all 16 gears – including forward, neutral, and reverse. This test bench is powered by a V8 Chevrolet engine and designed to rotate the transmission under a load to simulate a realworld environment and spins the transmissions like a diesel engine would when the machine is at work. Once the test is started, it is fully automated and prevents the technician from manipulating the test in any way. This test bench shifts between all the gears and is pass/fail, there is no grey area in the test results. All lube and clutch pack pressures are monitored in each gear and readings are auto recorded for product validations. The Fuji test ensures the transmission shifts correctly, the pressures are correct, and it is fully functional before the transmission is sent to the customer.



- Tests clutch pack in all 16 gears – in forward, neutral, and reverse
- Spin transmissions to simulate real-world environment
- Fully automated test – locks operator out once test begins
- Shift to different gears manually.



MOWER AND BALING PARTS

Parts made and designed for your machine

Your Case IH equipment is designed to perform in the toughest environments. When you choose Case IH, you choose to invest into your farm.

Visit your local Case IH dealer to see their full range of mower and baling parts.



Our genuine parts are designed by the engineers who know your machinery best. When using genuine parts, you're making the decision to protect your investments, whether that be your equipment or your harvest. When it comes to baling, we have all of the critical wear parts you need to maintain the quality of your investment.

WINDROWER/MOWER CONDITIONERS

- Blades
- Conditioner rolls
- Crop lifers
- Gear boxes
- Guards
- Hub kits
- Knife sections
- Wobble boxes



87298551



86616634



48054142



87580643



87528245



47756413

NUTRITIONAL LOSSES BEGIN AT CUTTING

Harvesting early and frequently improves the quality of hay produced. However, once the plant is cut, the challenge is to preserve as much of the nutritional value as possible. One thing is clear: the less time it takes to get the crop off the field and into a stable form of storage, the greater the nutrients retained for feeding to the animal. For hay, this means that the more quickly the crop can be dried down, the fewer nutrient losses. For silage or baleage, the sooner that crop is placed in a properly sealed storage structure at the appropriate moisture content, the more nutrients are retained.



LARGE SQUARE BALERS

- Bearing kits
- Bill hook assy
- Pick up guards
- Pickup guards
- Tine kits



87645121



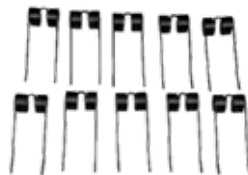
87298488

ROUND BALERS

- Bearing kits
- Belting
- Pickup guards
- Tine kits



87298538



87298536



87394242

SMALL SQUARE BALERS

- Bale counters
- Knife arms
- Knife kits
- Meter wheel kits
- Pick up tines



86608973



84204817



87012136



86979308



86977418

BALESKIIS®

Achieve higher quality bales

BaleSkiis® covers the bale chamber with a specially designed, self adjusting material. An anti springback pattern machined into the product uniformly compresses the hay and keeps it compressed when the plunger retracts. This ensures a constant uniform movement and compression of hay through the bale chamber. This means that the hay is not moving back and forth in the chamber breaking off leaves and stems. Putting more high protein leaves in the bale - not on the ground.

HOW IT WORKS

One-way anti-springback pattern machined full length of liner

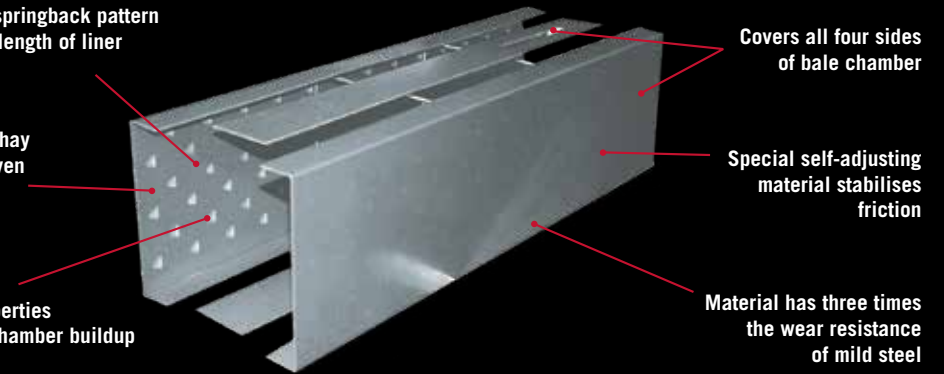
Pattern keeps hay compressed even when plunger retracts

Non-stick properties prevent bale chamber buildup

Covers all four sides of bale chamber

Special self-adjusting material stabilises friction

Material has three times the wear resistance of mild steel



FEATURES AND BENEFITS

- Kits for almost any small or large square baler
- Patented design
- Works in all crops
- BaleSkiis® high-density liner has three times the wear resistance of mild steel
- Reduces knotter problems and broken bales
- Heavier, more dense bales
- Reduced horsepower and fuel consumption
- Tests show leaf loss reduced by 30%
- Increased protein
- Reduces bale chamber plugging and buildup
- Reduced wear, breakdowns and downtime

Click here to watch this video to learn more about how BaleSkiis® can increase your yield this harvest.



Part Number	Description / Application
73323212H	Large square BaleSkiis® for model LB436 high density (includes HD clips)
73322984H	Large square BaleSkiis® for model LB434
73340931	Small square BaleSkiis® for model SB531
73340932	Small square BaleSkiis® for model SB541
Replacement Parts	
73323213	Replacement bolt
73323214	Replacement washer
73323215	Pressure rail strip large sq
73323216	Pressure rail strip small sq
73323217	49" metal clip blank (non HD kits)



MOISTURE METERS

Operate accurately and quickly, measuring moisture in the field

WHY TEST MOISTURE?

Moisture is the single most important factor influencing the quality of your hay and silage. Managing moisture levels is a continuous process that requires appropriate measuring tools. Testing moisture content before, during and after the season is one of the ways you can protect your investment. Whether out in the field or in the barn, our moisture testers operate accurately and quickly.

Scan here for more information on hay and silage moisture testers



PORTABLE HAY AND SILAGE MOISTURE TESTERS

Tester Name	WINDROW™	DHT-1™	HT-PRO™	1210 SILAGE AND GRAIN TESTER
Part Number	87299900	B500818	87298950	B500821



BALER-MOUNTED HAY MOISTURE TESTERS

Tester Name	BHT-1™	BHT-2™
Part Number	B505454	73340410

MERCHANDISE



**PURCHASE YOURS BY VISITING
THECASEIHSHP.COM.AU**

or visit your local Case IH dealer
to shop in store today!

Apparel



NEW



ACCESSORIES



Canvas stubby holder

Click or scan here to visit
the Case IH Shop



Clock



Tasman black duffel bag

Headwear



Straw hat



Nebraska beanie



Retro IH flat peak cap



Leo cap

* Please note all prices listed on the Case IH Shop are in Australian Dollars.

TOYS

Ride-on toys

Look no further for the perfect gift for the little (or not so little) tractor lovers!

SIT N SCOOT

The ultimate entry-level Case IH for your toddlers and small kids. This comfortable, ergonomic design promotes movement skills in a safe environment for your little ones.



73322295

Click or scan here to find your local Case IH dealer to shop their toy range in-store today!



PEDAL TRACTORS

Let the kids keep active with their very own pedal and chain Case IH! With different designs available, find the tractor perfect for your child, whether they prefer delivering goodies with their trailer or helping to prepare the field with their own loader!

Features and benefits:

- Enclosed bicycle chain to protect curious little fingers
- Adjustable bucket seats with roll-bar, perfect for a growing child
- Heavy-duty tractor wheels run easily over dirt, grass, gravel or hard paved surfaces



73322346 Pedal tractor with trailer

Soft toys



Quadtrac



Sugar cane harvester



Puma



73322351 Pedal tractor with loader

REDXTEND WARRANTY

EXTENDED WARRANTY PROTECTION

THE OPTIMAL MACHINE PROTECTION PLAN CREATED JUST FOR YOUR EQUIPMENT,
SHOULD THE UNEXPECTED OCCUR.

RedXtend is designed to offer true peace of mind by providing a range of extended warranty options to offer protection for up to 5 years total, inclusive of the Case IH standard product warranty. It's our commitment to take care of you should the unexpected occur, beyond the standard product warranty period.

You can purchase a RedXtend Protection Plan when ordering your new machine, or within 30 days from the date of delivery of your new equipment.

Click or scan here to
access the full RedXtend
brochure.



QUALITY REPAIRS

If your machine requires some attention, all eligible repairs will be carried out using genuine Case IH parts and will be fitted by our dedicated, factory-trained technicians.

TRANSFERABLE PROTECTION

As an added bonus, RedXtend plans remain with the machine and are transferable to the new owner if sold during the protection period. This provides prospective owners of your Case IH equipment with the peace of mind that the equipment has been properly cared for under your ownership.

FINANCING

For greater convenience and flexibility, RedXtend warranty can be financed as part of your Case IH equipment purchase. Speak to your dealer about developing a complete finance solution**.

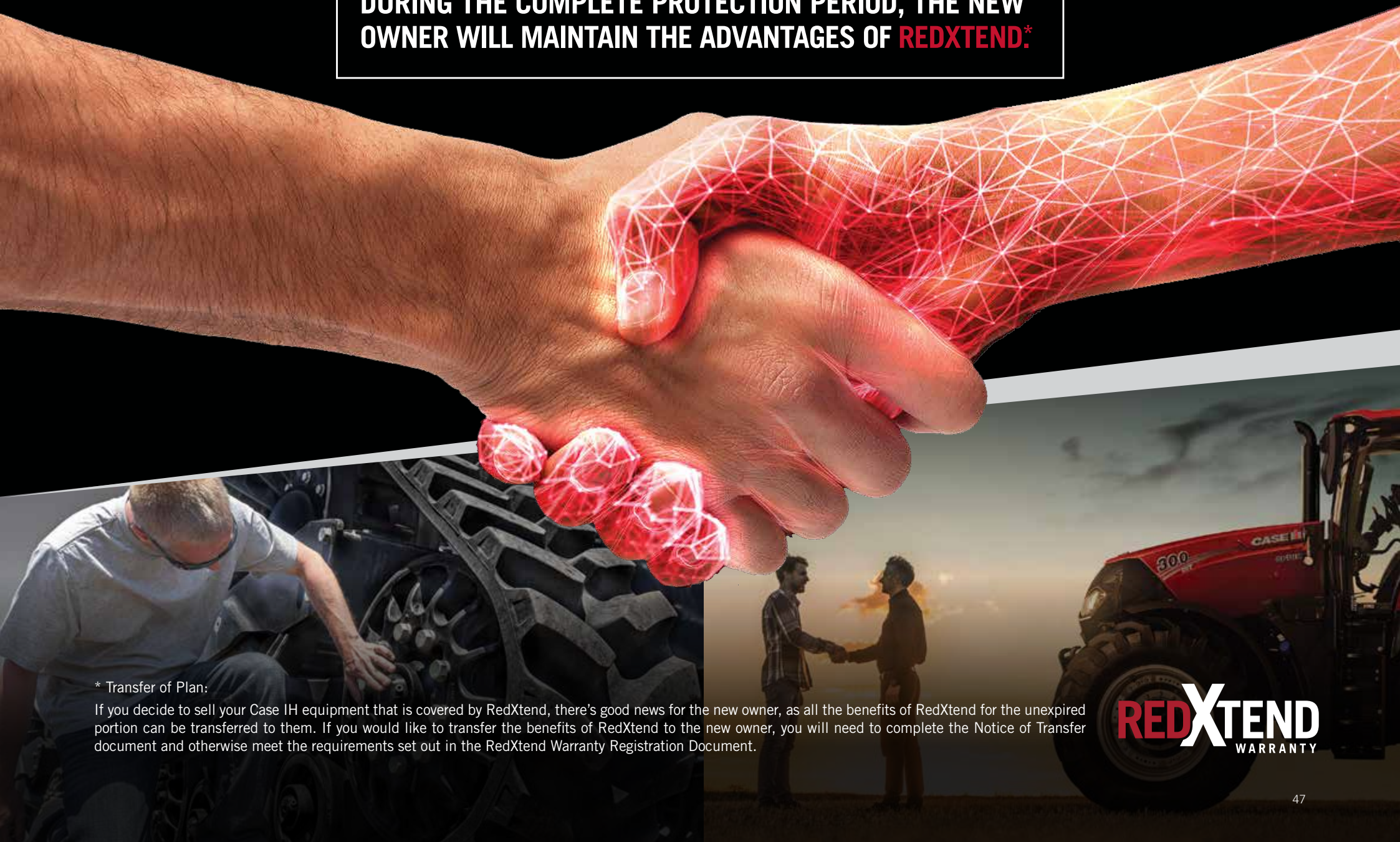
FLEXIBILITY OF PLANS

RedXtend is designed with the care and maintenance of your Case IH equipment in mind, allowing you to choose a protection plan for your specific needs.

* Terms and conditions apply. Contact your local Case IH dealer for details.

** RedXtend plans financed through CNH Industrial Capital Australia Pty Limited are required to be financed with the new machine purchase at time of sale.

REMEMBER, IF YOU TRADE OR SELL YOUR CASE IH DURING THE COMPLETE PROTECTION PERIOD, THE NEW OWNER WILL MAINTAIN THE ADVANTAGES OF **REDXTEND.***



* Transfer of Plan:

If you decide to sell your Case IH equipment that is covered by RedXtend, there's good news for the new owner, as all the benefits of RedXtend for the unexpired portion can be transferred to them. If you would like to transfer the benefits of RedXtend to the new owner, you will need to complete the Notice of Transfer document and otherwise meet the requirements set out in the RedXtend Warranty Registration Document.

REDXTEND
WARRANTY



 
[caseih.com](https://www.caseih.com)

Case IH reserves the right to make improvements in design and changes in specifications at any time without notice and without incurring any obligation to install them on units previously sold. The specifications, descriptions and illustrative material contained herein are as accurate as known at time of publication, but are subject to change without notice. Illustrations may include optional equipment and accessories and may not include all standard equipment.

New Zealand Hay and Harvest Catalogue 2023

CASE IH