

# TH6.26

# TH6.26

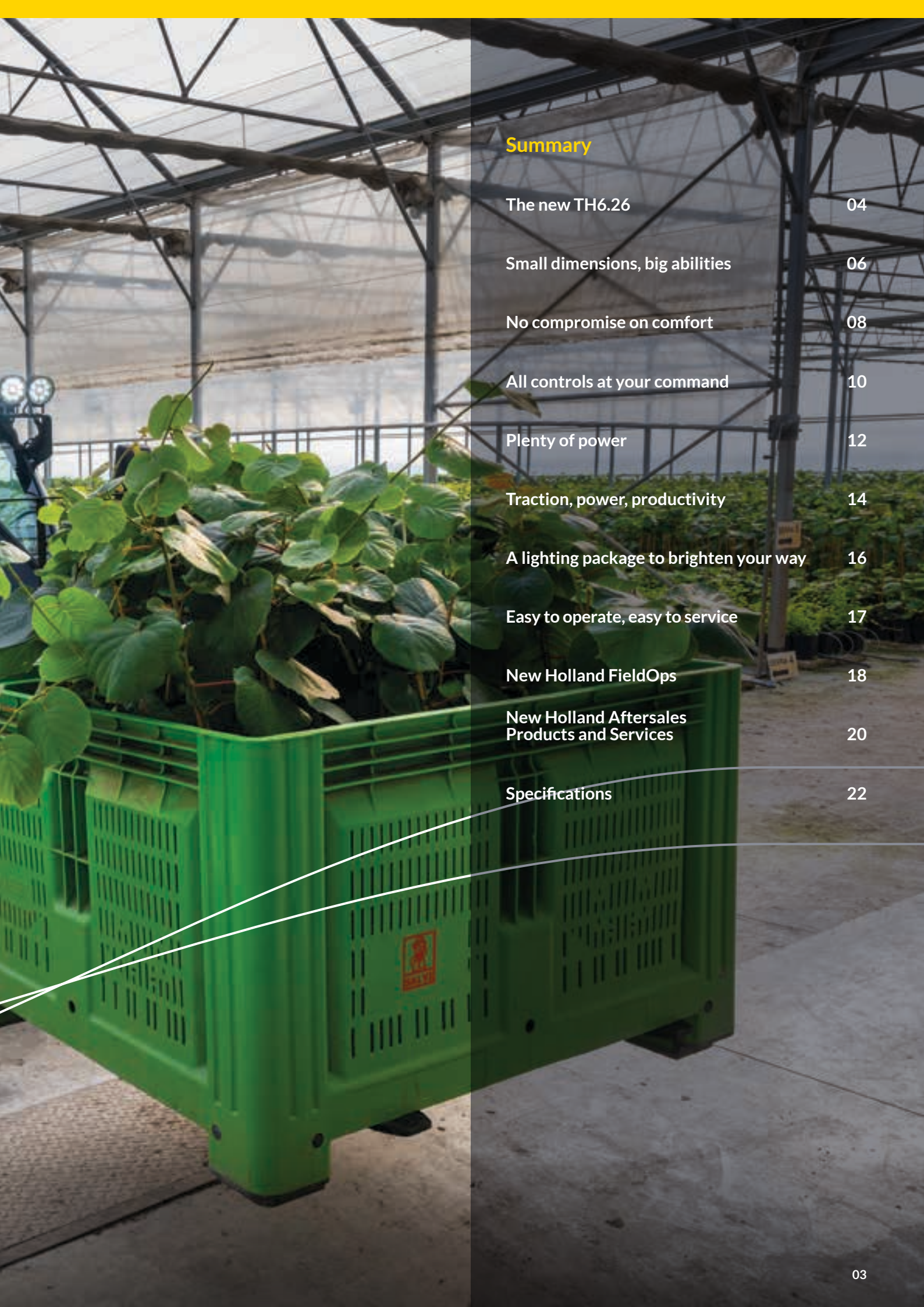


NEW HOLLAND









Summary

The new TH6.26	04
Small dimensions, big abilities	06
No compromise on comfort	08
All controls at your command	10
Plenty of power	12
Traction, power, productivity	14
A lighting package to brighten your way	16
Easy to operate, easy to service	17
New Holland FieldOps	18
New Holland Aftersales Products and Services	20
Specifications	22



# The new TH6.26

If your challenge is moving materials around yards and buildings, in narrow passages, and beneath low doorways, New Holland compact TH handlers are the answer – and now there's a new model that does all this even better.

The TH6.26 packs a huge specification into a 2m high/2m wide package, meeting the needs of pig farms, poultry units, glasshouses and other businesses.

There's more visibility, greater manoeuvrability, lower fuel consumption, higher levels of safety and easier maintenance, all in a machine which can lift 2.6t to 6.0m. Reduced dimensions don't have to compromise performance.



Small dimensions, big abilities  
See page 06



No compromise on comfort  
See page 08





All controls at your command  
See page 10



Easy to operate, easy to service  
See page 17





# Small dimensions, big abilities

Handling in environments such as livestock/poultry buildings and polytunnels demands a machine that is compact, convenient, easy to manoeuvre and simple to operate. Those qualities were the drivers behind the design of the New Holland TH6.26. If your work is in those sectors – and others where compactness is key – then this is the handler for you, blending a high capacity (max lift height 6m, max lift capacity 2.6t) with compact dimensions (less than 2m wide and 2m high). Built on a different platform to larger New Holland models, to match this sector's specific needs, the TH6.26 features a single-range hydrostatic transmission that's simple to operate yet incredibly efficient.





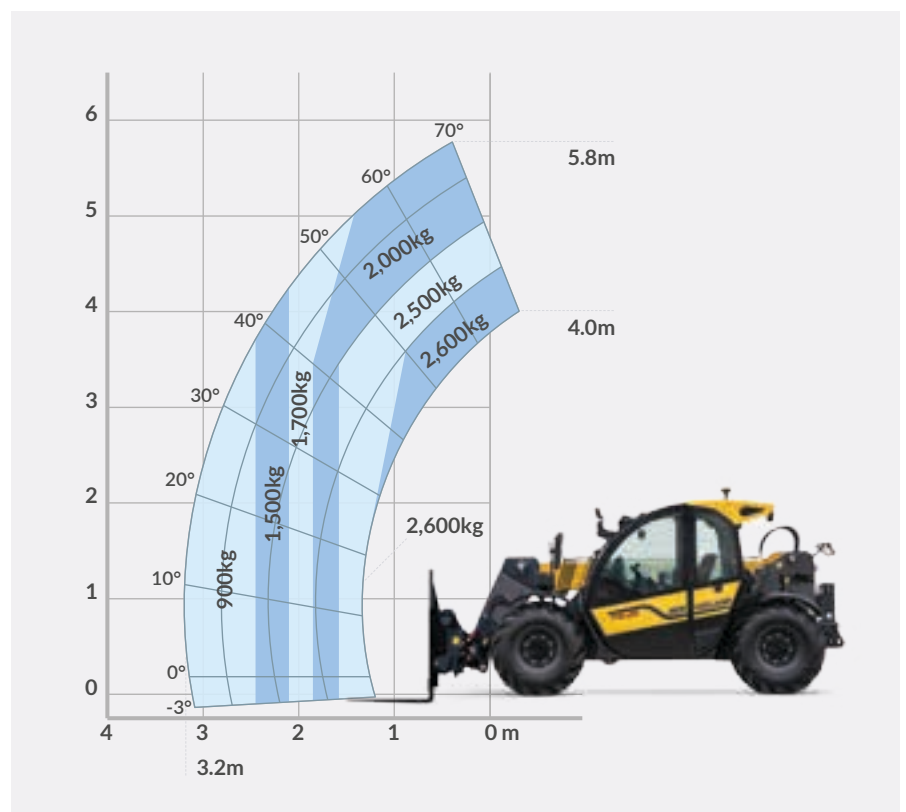


## Compact yet capable

Less than 2m high, the TH6.26 is able to fit with ease beneath low doorways and into restricted height buildings, making work within confined areas easier, faster and simpler, for more productive movement of materials.

This is matched with a narrow yet stable profile that gives the TH6.26 an overall width that is also less than 2m, ensuring easy access to narrow passages and gateways. The result is a telehandler that gives you the performance you need to tackle challenging situations, thanks to its combination of a compact design with the hydraulic performance of a larger machine.

1. 1955mm minimum
2. 4120mm without hook
3. 2265mm with mirrors

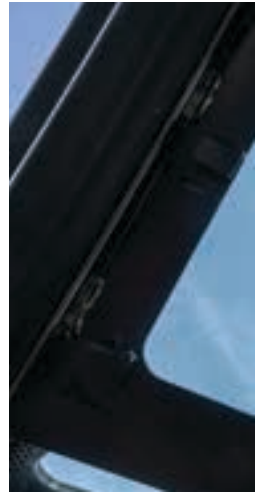


# No compromise on comfort

The cab of the new TH6.26 is proof a compact telehandler can also be a comfortable one. In this well-appointed workplace there are no compromises.

Settle into the fully-suspended luxury seat and you'll see there are no concessions to space or visibility, with plenty of room above and around you, and an unimpeded all-round view.

You even get the operating features of a larger machine, including a simple-to-use touchscreen display that keeps you instantly informed.







### Unlimited all-round views

With large areas of glass and a slim yet strong cab frame, you get a full all-round view from the TH6.26 driver's seat, making operating easy and ensuring maximum safety.

This is enhanced by a boom that, when lowered, is recessed into the machine, maximizing visibility to the operator's right when moving loads. And when lifting at height, a tall, a wide windscreen and roof window make it easy to observe the load all the way to full lift height.



### More space than you thought possible

Well-positioned grab-handles, a wide door provide safe and easy access to the high-comfort seat with its adjustable headrest and mechanical suspension (pneumatic option). Despite a machine height under 2m, you'll find plenty of head room. Start the engine and its smooth running becomes apparent, with minimal sound and vibration, whether you are static or in motion.

A 5in touchscreen display ensures you're fully informed, while a Bluetooth radio with microphone keeps you entertained and connected to your smartphone. Efficient air conditioning and heating are supplemented by opening windows for natural ventilation.

### Fresh, fully-filtered air

The TH6.26 ventilation system filters out a high level of impurities, but for particularly tough environments this can be supplemented with carbon filtration. The optional carbon filter is particularly effective at protecting the operator in environments containing fine dust and mists.



# All controls at your command

Take a seat in the TH6.26 and you'll see why this is such a productive machine to operate. The key controls are laid out logically in a way that ensures everything you need most often is in easy reach. The joystick fits easily into your hand, and all of its operating functions, including the buttons and switches it incorporates, are positive and precise.



The electrohydraulic joystick provides proportional control of the primary boom movement functions, providing precision movement that means operating speed is variable according to how swiftly the controls are activated.

The machine itself provides exactly the same levels of precision operation, from a tilting steering column that ensures a position to suit every operator, to a rotary switch adjacent to the joystick that enables simple selection of the best steering mode of the work situation.







## Keeping you fully informed

A 5in colour touchscreen terminal provides every element of data you need to keep you informed about your machine's status and performance.

Intuitive to use and easy to read, it provides clear sight of essential information, from engine speed and transmission mode to lighting operation and diagnostic data.

## Ensuring your safety

The TH6.26 incorporates a safety system consisting of an LED scale in the cab and a load sensor installed on the rear axle. These components check continuously the weight of the lifted load in relation to the length and inclination of the boom.

The system is proportional, with the colours of the LED lights becoming red when the machine's limits are reached, and an acoustic alarm sounding to fully alert the operator.



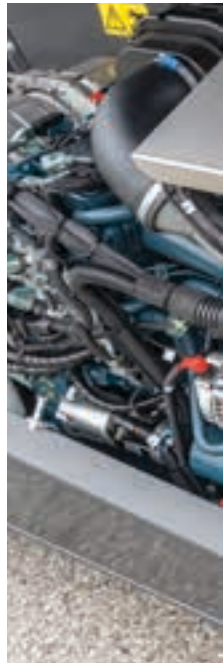
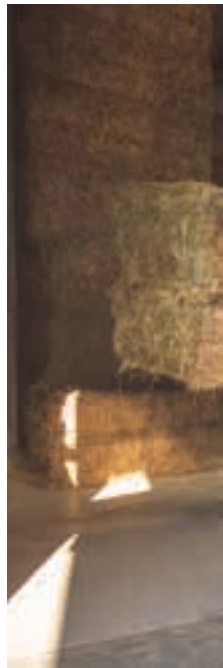


# Plenty of power

A highly-efficient 73hp (54.6kW) four-cylinder engine lies at the heart of the TH6.26, providing plenty of power for every situation – and requiring no DEF/AdBlue.

It is positioned longitudinally, ensuring minimal power losses and high cooling system efficiency.

Combined with a stop/start function, these features mean that fuel use is minimized across all types of work.







### Maximum performance, minimal fuel use

The TH6.26 incorporates the very latest engine technology to ensure you get maximum value from every drop of fuel used. Its features include a start/stop function that minimizes fuel wasted by idling, and IAS (Idle Auto Stop) which automatically switches off the engine if the driver leaves the seat.

Restarting is a simple matter of pressing the brake pedal when seated again.



### Staying cool in all circumstances

The TH6.26 features an electronically-governed low-noise reversible engine fan that ensures the radiator air intake grilles are blasted free of debris at 30-minute intervals.

As a result, the engine gets an uninterrupted supply of cooling air, fuel consumption is minimised and performance maximised.



### The capacity to keep you working

With a capacity of 80 litres, the fuel tank of the TH6.26 is designed to ensure long spells between refuelling stops.

It is easily accessible for swift, safe refilling, but features a robust locking cap to ensure maximum security of valuable fuel.



# Traction, power, productivity

With a new single-range 4WD hydrostatic transmission supplied by a 28cc gear pump with 80l/min flow @ 210 bar, the TH6.26 provides a combination of precision machine control, convenient operation and the ability to handle challenging conditions, complemented by a 45% limited slip differential on the front axle (100% option). An Eco Drive function adapts power delivery to the drive mode, further minimizing fuel consumption. And with a turning radius of just 3.25m, the TH6.26 packs all of this into a very nimble package.





Towable Weight	Unbraked	Inertia braking	Hydraulic braking	Pneumatic braking
TMR Homologation (kg)	3500	8000	13150	
No Homologation (kg)	3000	6000	-	



### Built to tow as well as lift

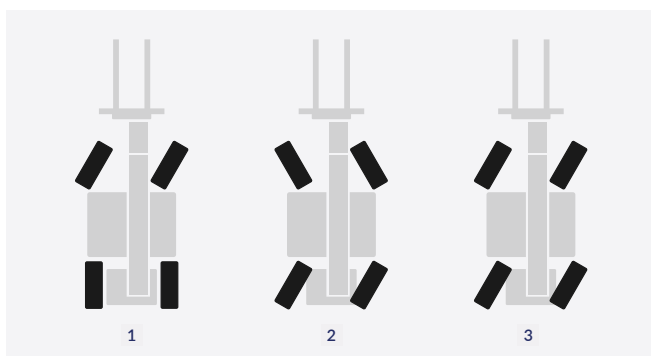
The TH6.26 can be specified compatible with the Tractor Mother Regulations (TMR), meaning that if road registration is required, the process is simplified.

With TMR approval it is possible to specify factory-fitment with a trailer hitch and hydraulic and / or pneumatic trailer braking.



### Drive mode makes everything simple

- In Automotive mode, it is possible to achieve a top speed of 30km/h.
- TH6.26 provide a driving speed totally independent from oil flow for the implement which is really helpful for some specific applications. For example, for a road sweeper, the revs need to be up for the motor to spin at the correct speed while the telehandler is running slowly.
- With the EcoSmart drive mode, it's possible to smoothly accelerate to a top travel speed of 30km/h, attained at just 2,350rpm, minimizing noise and cutting fuel use by 30% compared with Automotive mode.



### Steering modes to suit the task

1. In road mode, the front wheels steer to provide prevision movement on the highway
2. Select four-wheel steer, and the wheels turn towards each other, for the tightest turns
3. With crab steer, all wheels travel in the same direction - ideal for working alongside walls



# A lighting package to brighten your way

The TH6.26 is equipped with a comprehensive lighting package that ensures safe operation and high performance even in challenging dark and dusty conditions. For travel and standard tasks there are pairs of road lights front and rear, supplemented by safety lights including a flashing beacon and a rear fog light.

Handling in the dark is made easier by two boom working lights and a cab light. Everything is managed from a single display.

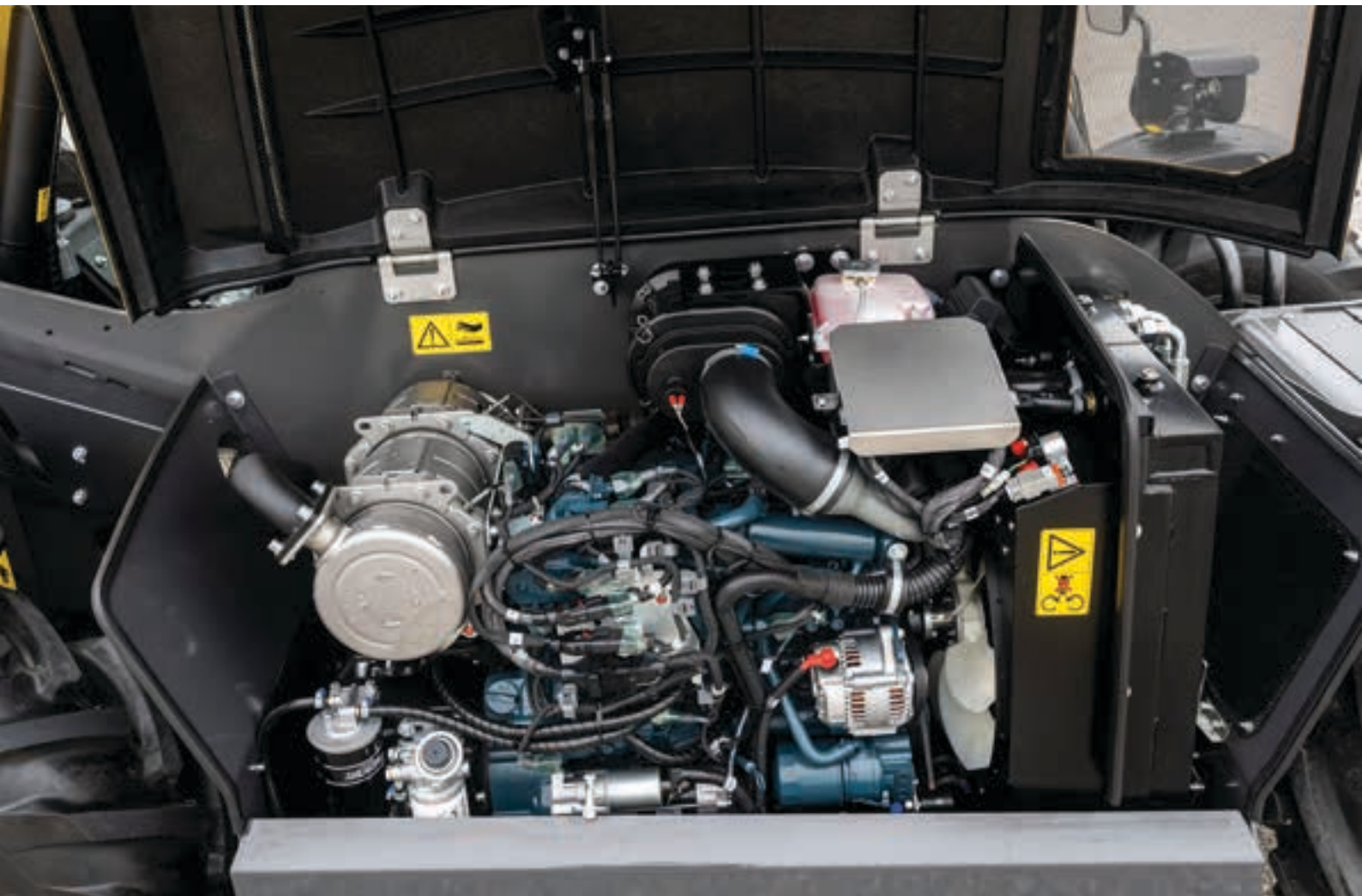




# Easy to operate, easy to service

When the TH6.26 was designed, a lot of thought went into ensuring it would be not only simple to work with, but also simple to prepare for work.

Servicing can be carried out swiftly and easily, with a removable panel covering key filters, and an engine bay that is easy to access fully via a bonnet that's also designed to help minimize noise emissions.



## Maintenance without effort

While the major grease points are easily accessible, the optional automatic lubrication system significantly cuts the amount of time required to grease the key area of the TH6.26.

It provides complete hands-free lubricating of 19 grease points around the machine, including those on the boom and on both of the axles, resulting in significant daily time savings that mean you can get to work faster and do more in a day.







**New Holland FieldOps™** enables you to manage your machine and agronomic data in one convenient location. Manage data quickly, enhance your work in the field or remotely and make informed decisions based on your field operations.

### Monitor Machines in Near Real-Time

Stay on top of machine activity with near real-time tracking of machine parameters, location, job status and task completion. Plan the next operation based on where machines are now and access a 24-hour machine history to optimise every move. Quickly detect abnormal machine conditions with customizable alerts and resolve critical events to maximise uptime.



### Proactive Dealer Support

Keep the contact with your local New Holland dealer to stay up and running by ensuring any potential issues are identified and addressed promptly to minimise downtime and maximise productivity.





Optimise input use with smarter planning and actionable insights  
Boost productivity and operational efficiency  
Maximise uptime with proactive monitoring



### Manage Tasks and Visualize Agronomic Data Layers

Create and send parameters like field names, boundaries, guidance lines and prescriptions directly to your New Holland and compatible third-party machines. Seamlessly transfer yield and other data into FieldOps™ for centralized management.

Gain powerful insights into your fields with in-depth analysis tools. View and compare multiple layers of agronomic data across the season—and year over year—to support better decision-making and long-term planning.



Create a free New Holland  
FieldOps account and get  
connected!



[fieldops.newholland.com](https://fieldops.newholland.com)



# New Holland Aftersales Products and Services

In choosing New Holland you have made a quality choice. You are ready to start your journey with us and our network, counting on a wide range of quality products and professional services available and next to you season after season.

## GENUINE PARTS

### Top performance guaranteed at all times

Committed to keeping your machines in top condition for like-new performance, New Holland offers a wide range of Genuine Parts, manufactured to the same high standards and with the same high-quality components used in new machines.

Genuine Parts are the result of a certified supply chain and stringent tests on the conformity, the reliability and the durability, to ensure consistent high levels of safety and performance over time.



## REMAN PARTS

### Recommended for your ageing New Holland machine

Choosing the Reman range means embracing our circular product lifecycle approach with the certainty that the components fitted to your machine will be as efficient as new.

Thanks to the unrivalled know-how acquired over the last decades, New Holland is the ideal partner for such a complex and sophisticated industrial process, sustainably remanufacturing the essential components of your machine to the highest standards, guaranteeing as good as new quality at an affordable price.

## ACCESSORIES

### Tailored to your farming

Every day, New Holland implement solutions that make your machine unique and reliable, covering every single demand.

From safety to productivity, from comfort to power, the complete range of accessories is adapted to your specific activities, as single items or in kits set up by your New Holland dealer.

### Ambra lubricants

With the right lubricants, you can protect your machine, minimise maintenance and downtime and boost your performance.

Ambra lubricants line, engineered by Petronas specifically for New Holland machines, is our recommended choice.

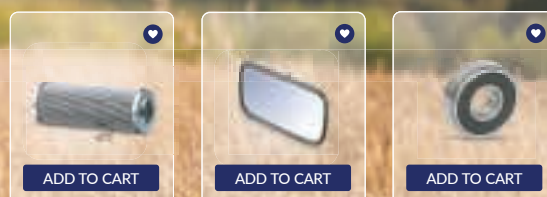


## GENUINE PARTS: whenever, wherever!

Choose from click & collect or doorstep delivery at MYCNHSTORE.



Get your parts on [www.mycnhstore.com](http://www.mycnhstore.com)



GENUINE  PARTS





## UPTIME SERVICE

Developed by New Holland, Uptime Service is the new, professional and flexible Planned Maintenance Programme designed to make it easier for you to manage long term routine maintenance.

Planned Maintenance is a key factor to keep your equipment always in good shape, maximizing the performance and the uptime through scheduled operations carried out by professional New Holland Dealer' technicians, using only genuine parts and lubricants.

## Connected Services



New Holland FieldOps™ is the Telematics Portal to stay constantly connected with your equipment from the comfort of your office. With New Holland FieldOps™ you can monitor the locations and the usage of your fleets, manage precision farming operations, get the Dealer's remote support 24/7 and much more.

New Holland technicians operating in the Dealer's IntelliCentre, remotely monitor the connected machines preventing possible failures before they even occur.

## UPTIME SUPPORT

In high season, our Uptime Support experts are ready to support 24/7 as soon as your assistance request is recorded.

Together with your New Holland dealer, we do everything possible to provide the quickest and most effective support, until the matter is fixed and you are back in your field! You can activate Uptime Support through the Top Service phone number or MyNH App.

## UPTIME WARRANTY

With Uptime Warranty you are assured that all possible failures will be professionally fixed by specialized New Holland Dealer's technicians and you won't need to pay for anything, keeping operating costs under control.

Uptime Warranty is the New Holland extended warranty program offering maximum protection, minimum cost and highest resale value.

**Included on TH6.26**



### New Holland Uptime Pack – All the best services in one pack

Uptime Pack group together the best of New Holland aftersales services in different packages designed to maximise uptime, improve operational safety, keep costs under control and increase productivity. There are three levels of support for our customer: Uptime Pack Basic, Uptime Pack Plus and Uptime Pack Premium.



Farm with peace of mind



Maximise your uptime



Stay connected with your farming



Increase your productivity

## New Holland Style

Want to make New Holland a part of your everyday life? Browse the comprehensive selection on [www.newhollandstyle.com](http://www.newhollandstyle.com)

A whole range of items are available including hard wearing work clothing and a vast selection of scale models, together with so much more. New Holland. As individual as you.





Model	TH6.26
<b>Engine</b>	
Compliant with engine emissions regulations	Stage V
Displacement (cm³) / No. of cylinders / Valves	3300 / 4 / 2
Aspiration	Turbo intercooler
Fuel system	High pressure common Rail
Exhaust system	DPF + DOC
Max power - ISO 14396 - ECE R120 [kW/hp(CV)]	54.6/74.2
Max torque - ISO 14396 - ECE R120 (Nm)	289 @ 1500rpm
Engine start and stop	●
Engine fan reversible	○
Engine preheating	○
<b>Transmission</b>	
Traction type	Hydrostatic / single gear
Maximum speed (km/h)	30
Drive modes	Automotive / EcoSmart / Electronic creeper
Hydraulic oil preheating	○
Oil pressure (MPa)	210
Oil flow rate (l/min / cm³/min)	80 / 28
<b>Brakes</b>	
Inching function integrated into brake pedal	●
Service brake (oil bath disc in front axle)	●
Parking brake (negative SAHR type front axle)	●
Hydraulic trailer brake	○
Pneumatic trailer brake	○
<b>Axles and differentials</b>	
Front / rear axle type	DANA Model 211 (4WD)
Steering mode	2WS Road mode / Crab / 4WS
Front axle limited slip 45%	●
Front axle differential lockable 100%	○
<b>Tyres</b>	
12 - 16.5" CAMSO SKS 532	○
12.5 - 18" AGRI	●
12.5 - 18" BKT MP600	○
12.5 - 18" BKT MP567	○
340/80 R18 Michelin XMCL	○
<b>Lighting</b>	
Work Led Light (2 front and 2 rear) cab roof	○
<b>Hydraulics</b>	
Pump	
Front auxiliary flow	60l/min constant flow
Rear auxiliary flow	60l/min constant flow
<b>Cab</b>	
Structure	ROPS and FOPS
Front and Rear wiper	●
Display and LMC / Steering wheel adjusting	●
Rear and Lateral windows openable	●
Roof Wiper	○
Seat with Mechanical Suspension	●
Seat with Air suspension (Deluxe)	○
Air Heater and Ventilation	●
Air Conditioning	○
Cabin air Filter	●
Carbon air Filter	○
Internal Mirror	○
External mirror Heated	○
Sun Visor	○
Grid Screen Guard	○
Radio	●
Rear Camera	○
Emergency Stop / LIM/LMC sys / Safety seatbelt	●
Oversea Protection	○
Telematics	○
<b>Hitching</b>	
Rear Trailer Hitch	○
Rear Socket 7 Pin	○
External rear Mirror for Hitch	○
<b>Capacities</b>	
Fuel tank (Litres)	80
Engine oil (Litres)	10
Hydraulic oil tank (Litres)	70
Radiator (Litres)	15.5
<b>Greasing</b>	
Automatic lubricant system	○



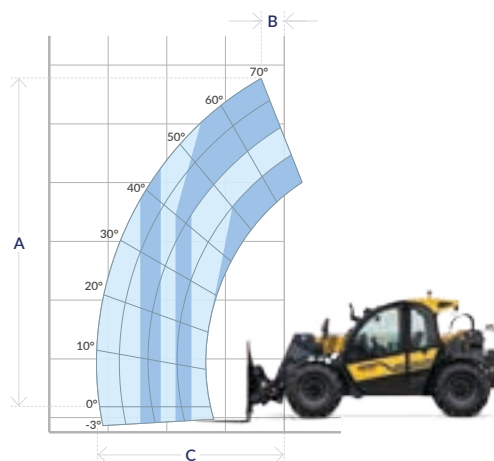
Model	TH6.26
Boom and Carrier	
Boom Suspension (Smooth Ride Control)	○
Floating boom	○
Continuous Flow	○
Vehicle Speed Limiter (ASL)	●
Boom Hydraulic Front Coupler (AUX)	○
Boom Electric Socket (PEB)	○
Boom Speed Control (BSC)	○
Boom suspension + Floating boom	○
Boom angle indicator	-
Aux circuit Return Line	○
Boom Work 2 Led Lights	●
CNH Carrier - Mechanical lock	●
CNH Carrier - Hydraulic lock	○
Manitou Carrier - Mechanical lock	○
Manitou Carrier - Hydraulic lock	○
Euro Carrier - Hydraulic lock	○
SSL Carrier - Mechanical lock	○
SSL Carrier - Hydraulic lock	○

● Standard ○ Optional - Not available



Model	TH6.26
Dimensions	
A Wheelbase (mm)	2525
B Axle to carrier (mm)	1075
C Carrier to rear of machine* (mm)	4120
D Ground clearance (mm)	220*/300**
Total angle (°)	155
E Cab height** (mm)	1955*/2035**
F Cab width (mm)	960
G Wheel track** (mm)	1580
H Overall width (outside tyres) (mm)	1920
Overall width with mirrors out (mm)	2265
Turning radius outside tyres - 4WS** (mm)	2.25*/3.25**

\* With 12 - 16.5" tyres: 3.25m \*\* With 12.5 - 18" tyres: 4.05m



Model	TH6.26
Main performance	
Max lifting capacity (kg)	2600
Lift capacity at full height (kg)	2000
Lift capacity at full reach (kg)	900
A Max lift height (mm)	5800
Tilt angle (°)	155
B Reach at max lift height (mm)	400
C Max forward reach (mm)	3200





New Holland prefers **Ambra** lubricants



[www.newholland.com/uk](http://www.newholland.com/uk) - [www.newholland.com/ie](http://www.newholland.com/ie)



The data indicated in this folder are approximate. The models described here can be subjected to modifications without any notice by the manufacturer. The drawings and photos may refer to equipment that is either optional or intended for other countries. Please apply to our Sales Network for any further information. Published by New Holland Brand Communications. BTS Adv. - Printed in Italy - 11/25 - (Turin) - 251000/INB