

Mini Track Loader

TL100 | TL100EV



CASE
CONSTRUCTION

TL100

Experience the unmatched versatility and power of CASE mini track loaders. Engineered to tackle a wide range of tasks, these machines are perfect for loading, lifting, digging, dozing, augering, sweeping, raking, grinding, and planing. Designed for both ease of use and maximum productivity, our mini track loaders are the ultimate tool for any job site, providing the efficiency and reliability you need to get the job done right. Whether you're in construction or landscaping, these hard-nosed go-getters are built to boost your capabilities and take on more tasks with ease.



PLENTY OF PUSHING POWER

- The TL100 is powered by a 1.2 liters, 18.5 kW, 3 cylinder diesel engine with a peak torque of 80.1 Nm at 1700 RPM
- A phenomenal pushing power for such a small equipment with a travel speed of 7.5 kph
- No DEF or regeneration required



VERSATILE HYDRAULICS

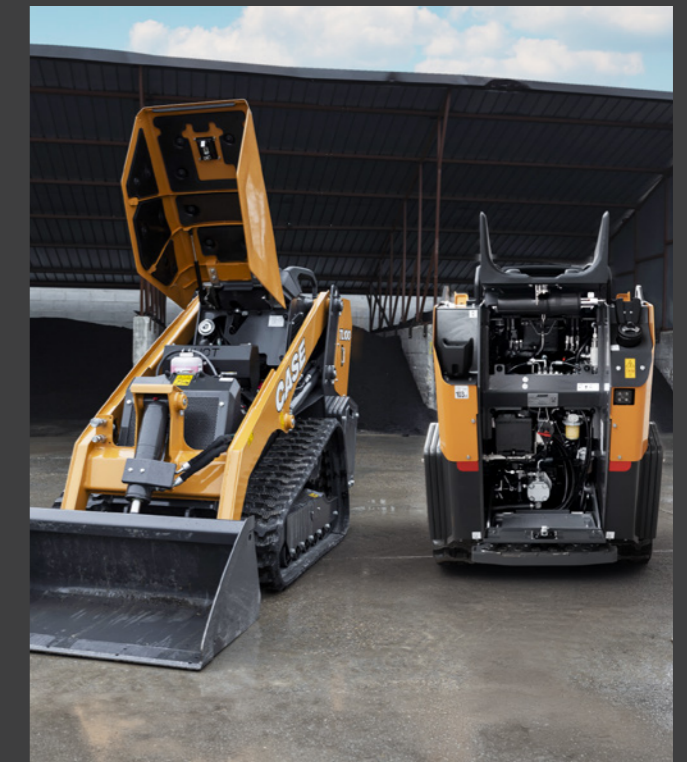
- The TL100 bio-oil compatible hydraulics deliver 50 l/min at 190 bar to master every attachment on all applications
- Optional 14-pin electrical circuit and CASE drain
- The Common Industry Interface coupler makes the attachments interchangeability quick and easy



1026 mm

ULTRA COMPACT SIZE

- Case mini track loaders can be configured with two 5-rollers undercarriage options:
 - Wide undercarriage with an overall width without bucket of 1026 mm;
 - Narrow undercarriage with an overall width without bucket of 914 mm.
- The ideal size to work in jobsites in confined areas and with excellent flotation to minimize the ground markings



EXCELLENT SERVICEABILITY

- Easy access to both front and back service points makes maintenance the easiest in the whole CASE range
- The fully openable front hood and back panels allow an easy access to the engine and hydraulic oil and coolant levels as well as the main components and the battery and battery disconnect

TL100EV ELECTRIC

The reliability of a mini track loader and the ability to work anywhere – that's the secret to the CASE TL100EV. Powered by a 23.5 kWh Lithium Ferrophosphate (LiFePo4) cobalt-free battery, this electric mini track loader delivers 470 kg of rated operating capacity while opening up new jobsite opportunities.



23.5 kWh
Lithium
Ferrophosphate



Super-silent
operation



CLEAN POWER

- A 23.5 kWh Lithium Ferrophosphate (LiFePo4) cobalt-free battery is at the heart of the new TL100EV
- Zero emissions and super-silent operation makes the TL100EV ideal to work indoor, in zero-noise environment and night shifts
- The driveline is powered by two 10,6 kW Intern Permanent Magnets (IPM) electric motors, while the IPM electric motor powering the implement has a rated power of 25 kW



PRECISE AND EFFORTLESS CONTROLS

- The new joysticks, with a better grip, give a safer and more comfortable control
- The dashboard, intuitive and easy to navigate, allows for multiple settings to adapt the machine to the preferred responsiveness of the operator



DURABLE CHARGE FOR LONG WORKING HOURS

- The 230V on-board charger can easily be recharged from any household power grid with 20% to 80% in 5 hours
- The optional 400V off-board charger, compatible with the other Case electric models, allows for a faster charge with 20% to 80% in 1.5 hours
- Two drive speed modes and three work modes help the operator in always having the right power for the application avoiding unnecessary waste of energy



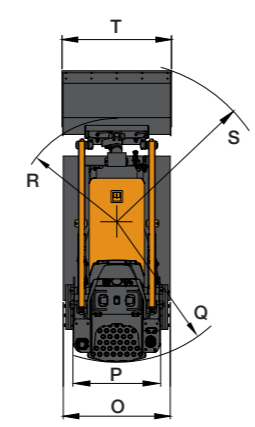
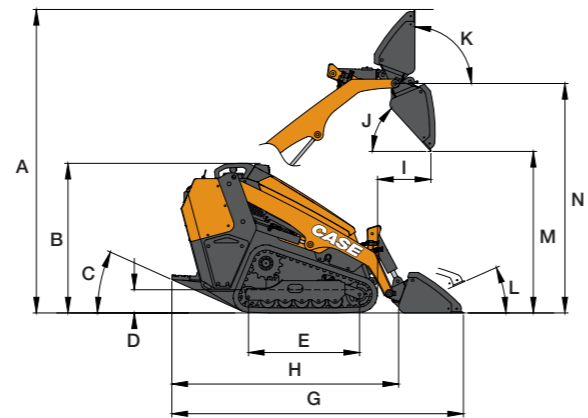
SAFETY IN EVERY JOBSITE

- The platform sensor detects the presence of the operator and immediately disables the hydraulics in case of emergency
- A new coupler light is added to improve the visibility on the attachment and a rear strobe light makes the operation safer when dark

SPEC SHEET

SPECIFICATIONS			
ENGINE/BATTERY		TL100	TL100EV
Model/Type		Kubota D1305-E4B	Lithium Ferrophosphate (LiFePo4) cobalt-free
Engine/Battery Power			
- Gross	hp/kW	24.8 / 18.5	23.5
- Net	hp/kW	24 / 18	21.2
Displacement	l	1.2	-
Cylinders		3	-
Peak Torque	N-m @ rpm	80.1 @ 1700	-
Emissions certification		Stage V	-
DRIVELINE			
Transmission type		Hydrostatic	Internal permanent magnet electric motors: - traction: 2 x 8.4 kW - implement: 25.0 kW
Maximum travel speed	km/h	7.5	8
Parking brake		SAHR pin brake	SAHR pin brake
LOADER ARM			
Lift geometry		Radial	Radial
Tipping load			
- Narrow track	kg	1285	1275
- Wide track	kg	1428	1336
RATED OPERATING CAPACITY (R.O.C.)			
- Narrow track 35% of the tipping load (50%)	kg	450 (643)	449 (637)
- Wide track 35% of the tipping load (50%)	kg	500 (714)	469 (667)
HYDRAULICS			
Implement pump type		Fixed gear	Fixed gear
Loader control valve type		Open center	Open center
Standard flow	lpm	50	52
Operating pressure	bar	190	190
SERVICE CAPACITIES			
Fuel tank	l	30	-
Engine oil with filter	l	4.5	-
Hydraulic system	l	17	25.3
Engine coolant	l	3.5	-

DIMENSIONS			
A Overall operating height	mm	2911	
B Overall height	mm	1435	
C Rear departure angle	°	24	
D Ground clearance	mm	222	
E Track length on the ground	mm	1065	
F Overall length without bucket	mm	2175	
G Overall length with standard bucket	mm	2796	
H Transport length (no bucket, platform raised)	mm	2155	
I Reach at maximum dump	mm	570	
J Dump angle	°	42	
K Maximum rollback at full height	°	90	
L Maximum rollback at ground	°	24	
M Dump height with standard bucket	mm	1549	
N Hinge pin height	mm	2201	
O Machine width:			
- Narrow track	mm	890	
- Wide track	mm	1026	
P Track gauge:			
- Narrow track	mm	710	
- Wide track	mm	776	
Q Clearance circle radius - Rear	mm	1348	
R Clearance circle radius - Without bucket	mm	913	
S Clearance circle radius - With standard bucket	mm	1541	
T Bucket width:			
- Narrow track	mm	914	
- Wide track	mm	1067	



OPERATING WEIGHT		TL100	TL100EV
Narrow track (with 2x lateral counterweights)	kg	1604	1862
Wide track (with 6x lateral counterweights)	kg	1716	1875

STANDARD AND OPTIONS

TL100 | TL100EV

FEATURES	TL100	TL100EV
OPERATOR COMPARTMENT		
Color display dashboard	-	●
Cushioned operator platform	●	●
Operator grab handles	●	●
Cup holder	●	●
Cellular phone holder	●	●
Operator presence sensor	●	●
HYDRAULICS		
Hydraulic pilot joystic control	●	●
Auxiliary circuit with standard flow	●	●
Loader arm float	●	●
CASE drain attachment connection	○	○
Bio-hydraulic oil and lubricants	○	○
WORK LIGHTS		
Front and rear LED work lights	●	●
Extra-LED lights	○	○
ELECTRICAL COMPONENTS		
On-board TYPE-2 EU IEC62196 charger	-	●
Type-2 EU charging cable	-	●
Off-board fast charger	-	○
UNDERCARRIAGE		
Wide track and counterweight	●	●
Narrow track and counterweight	○	○
Non-marking tracks	-	○
GROUND ENGAGING TOOLS		
Common Industry Interface quick coupler	●	●
36" bucket	○	○
42" bucket	●	●
Bolt-on bucket teeth and cutting edge	○	○
MISCELLANEA		
Operator manual	●	●
Master battery disconnect	●	●
14-pin multifunction electric socket	○	○
Engine tip-over shut-off	●	●
Connectivity on-board	○	●

● Standard | ○ options | - N/A



BUILDING ON OUR HERITAGE.

Since 1842, at CASE Construction Equipment we have lived by an unwavering commitment to build practical, intuitive solutions that deliver both efficiency and productivity.

The vast CASE dealers' network is always ready to support and protect your investment. At the end of the day, we do what's right for our customers and our communities so that they can count on CASE.

CNH Industrial
Deutschland GmbH
Case Baumaschinen
Benzstr. 1-3 - D-74076 - Heilbronn
DEUTSCHLAND

CNH Industrial
Maquinaria Spain, S.A.
Avenida Aragón 402
28022 Madrid
ESPAÑA

CNH Industrial France, S.A.
16-18 Rue des Rochettes
91150 Morigny-Champigny
FRANCE

CNH Industrial Italia Spa
Lungo Stura Lazio 19
10156, Torino
ITALIA

CASE Construction Equipment
Cranes Farm Rd
Basildon - SS14 3AD
UNITED KINGDOM

NOTE: Standard and optional fittings can vary according to the demands and specific regulations of each country. The illustrations may include optional rather than standard fittings - consult your Case dealer. Furthermore, CNH Industrial reserves the right to modify machine specifications without incurring any obligation relating to such changes.

Conforms to directive 2006/42/EC

CASECE.COM
00800-2273-7373

The call is free from a land line.
Check in advance with your Mobile Operator if you will be charged. Toll free number not available from all calling areas.

