

EXPERTS FOR THE REAL WORLD
SINCE 1842

CASE
CONSTRUCTION

HYDRAULIC EXCAVATORS

C Series

CX210C / CX220C / CX220C LR



QUALITY
YOU CAN TRUST

MAIN REASONS TO CHOOSE THE C-SERIES



HIGH EFFICIENCY

Up to 8% more fuel efficiency.
Constant consumption monitoring.
With the 5 Energy Saving Controls, Isuzu engine and the new ECO gauge function.



HIGH PRECISION AND CONTROLLABILITY

High performance.
Smooth control.
**Improved fuel efficiency.
With CASE Intelligent Hydraulic System.**



HIGH RELIABILITY

Robust design.
Increased durability.
Lower cost of ownership.
With the CASE top manufacturing quality.



COMFORT AND SAFETY

Spacious and safe cab.
Low noise and vibrations.
Ergonomic workstation.
Real time parameters monitoring.
**With the newly designed cab,
fully adjustable seat/joysticks
and brand new LCD cluster.**





OUTSTANDING VISIBILITY

Safe and fast operations.
More comfort.
With wider glazed area.



FAST CYCLES

Higher breakout force.
Continuous operations.
Up to 10% higher digging capability.
**With H/SP modes and
Auto Power boost.**



HIGH VERSATILITY

The perfect machine
for every application.
**With 3 available power
modes and 10 auxiliary
hydraulic settings.**



LOW TOTAL COST OF OWNERSHIP

Longer service intervals.
Reduced downtimes.
Fast, easy and safe maintenance operations.
**With the EMS bushings, high quality
components and service points accessible
from the ground.**



HIGH PRECISION AND CONTROLLABILITY

The proven CASE Intelligent Hydraulic System (CIHS) delivers impressive machine control with unrivalled energy and fuel savings in all cycle time phases.



HIGH EFFICIENCY

CASE advanced energy management consists of **5 Energy Saving Controls**:

- **Torque Control**: electronic control of the hydraulic output to prevent engine overloads.
- **Boom Economy Control (BEC)**: increased fuel efficiency in boom lowering/swinging operations.
- **Swing Relief Control (SWC)**: optimized hydraulic power distribution in slewing operations to deliver the most efficient flow and pressure.
- **Spool Stroke Control (SSC)**: pressure and flow during digging and leveling operations
- **Idle functions**
 - **Auto Idle**: lowers engine rpm after 5 seconds of lever inactivity;
 - **Idle Shutdown**: shuts the engine down after a pre-set time.

The C series models are powered by **Isuzu engines**, designed to boost machine performances and optimize fuel economy. Fuel consumption can be constantly monitored by the operator throughout the **new ECO gauge function**, that displays in real time the energy saving level utilized.





HIGH RELIABILITY

Boom and arm structure has been designed to reinforce the thickness rate of the most stressed areas, to increase productivity, the cycle times and durability of components.

- New high strength casting parts joined with thicker hinge flanges reduce stress on components.
- Longer greasing intervals to reduce downtime (1.000 hrs).
- The 'sloped' lower frame design reduces the time needed to clean the undercarriage.

Accurate, simple and robust design for high durability.

- The C-Series delivers leading design solutions and manufacturing quality.
- Boom and arm feature forged brackets and reduced tolerances for **increased component life minimizing downtime.**
- The anti-friction resin shims in the boom foot and head reduce noise and free play, **increasing durability and reliability for the customer.**
- New synthetic hydraulic filter reduces system contamination, **cutting service costs and boosting machine longevity.**





COMFORT AND SAFETY

- Superior wide and roomy cab with ample legroom.
- New cushioning system to lower noise and vibration levels for the operator's ultimate comfort.
- Totally adjustable workstation with fully reclinable air-suspended seat (optional).
- Air conditioning system with 25% more airflow and 6% better performances compared to B-Series.



OUTSTANDING VISIBILITY

- Wider glazed surface with single piece side window.
- New 7" LED cluster for a more secure and safe working environment and to constant monitor the main machine parameters.



QUALITY YOU CAN TRUST



FAST CYCLES

The advanced hydraulic system offers higher breakout forces, improved swing speeds and greater swing torque, resulting in **faster cycle times and 5% increase in productivity**. Power boost function is automatically engaged. The electronic management of speed and power lowers fuel consumption and offers considerable productivity benefits in terms of outputs.



HIGH VERSATILITY

3 power modes to match any customer need:

- A** AUTO: for normal digging, grading, lifting and precision work.
- H** HEAVY: for heavy operations always granting the best balance between productivity and fuel economy.
- SP** SUPER POWER: extra speed and power for the most demanding jobs that require maximum productivity.



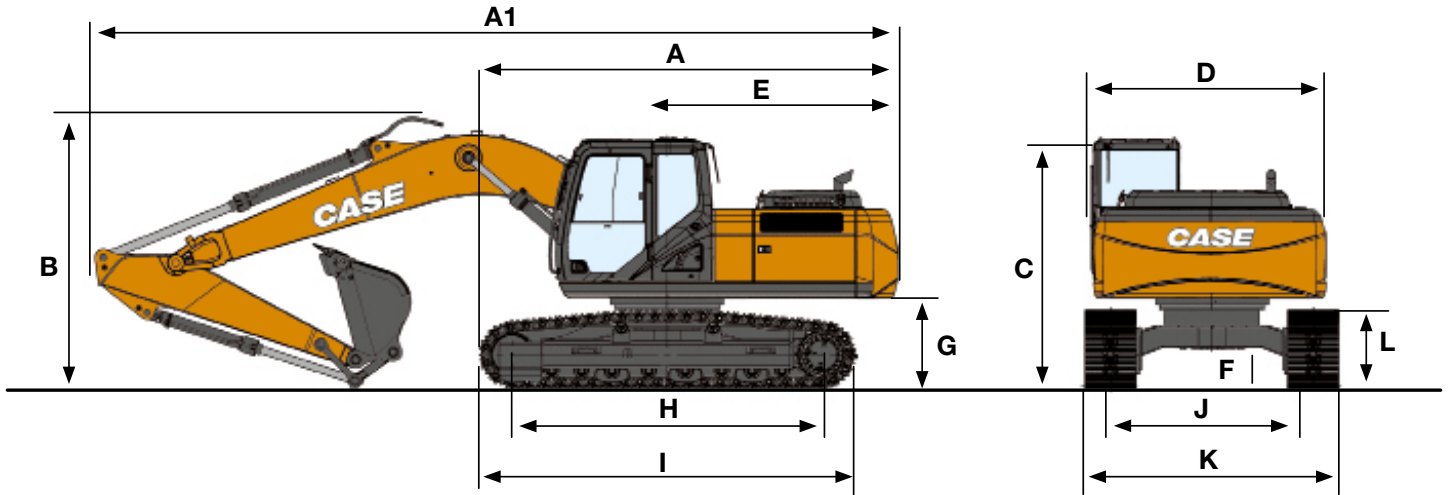
Operators can store up to **10 auxiliary hydraulic flow settings** (and pressures as optional) to easily switch among different attachments with no need of any mechanical adjustment.



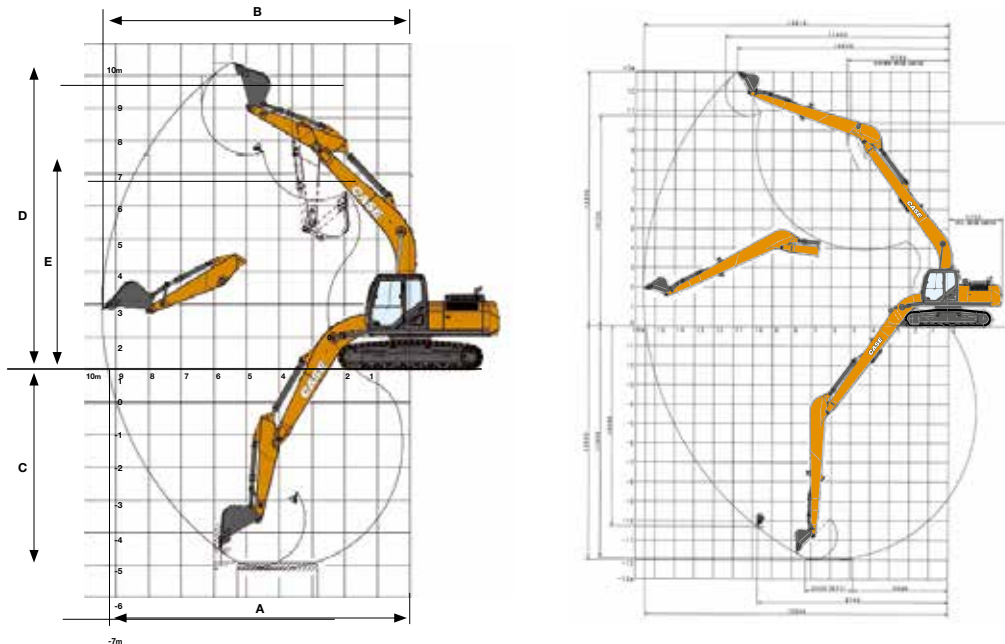
LOW TOTAL COST OF OWNERSHIP

- The Extended Maintenance Bushings (EMS) provide longer greasing intervals, **reducing daily and weekly maintenance for the operator**.
- All filters and regular check points are grouped and easily accessible from the ground.
- Radiator and cooler are mounted side by side fore more efficient cooling and easy access for cleaning.
- Optional refueling pump with auto cut off reduces downtime for regular fills.





GENERAL DIMENSIONS	CX210C		CX220C		CX220C LR
	Arm 2.40 m	Arm 2.94 m	Arm 2.40 m	Arm 2.94 m	Arm 6.40 m
A - Overall length (without attachment)	mm	4810	4810	4960	4960
A1 - Overall length (with attachment)	mm	9480	9400	9480	12470
B - Overall height (with attachment)	mm	3190	2970	3190	3000
C - Cab height	mm	2950	2950	2950	2950
D - Upper structure overall width	mm	2770	2770	2770	2770
E - Swing (rear end radius)	mm	2750	2750	2750	2750
G - Clearance height under upper structure	mm	1040	1040	1040	1040
F - Minimum ground clearance	mm	440	440	440	440
H - Wheel base (Center to center of wheels)	mm	3370	3370	3660	3660
I - Crawler overall length	mm	4180	4180	4470	4470
L - Crawler tracks height	mm	920	920	920	920
J - Track gauge	mm	2200	2200	2390	2390
K - Undercarriage overall width (with 800 mm shoes)	mm	3000	3000	3190	3190



PERFORMANCE DATA	CX210C		CX220C		CX220C LR
	Arm 2.40 m	Arm 2.94 m	Arm 2.40 m	Arm 2.94 m	Arm 6.40 m
Boom length	mm	5700	5700	5700	8700
Bucket radius	mm	1450	1450	1450	1230
Bucket wrist action	°	177	177	177	178
A - Maximum reach at GRP	mm	9240	9730	9240	15500
B - Maximum reach	mm	9420	9900	9420	15610
C - Max. digging depth	mm	6110	6650	6110	12020
D - Max. digging height	mm	9410	9610	9410	12970
E - Max. dumping height	mm	6590	6810	6590	10720
Arm digging force	kN	132	110	132	46
Bucket digging force	kN	152	152	152	65

WEIGHT AND GROUND PRESSURE	CX210C	CX220C
2.94 m arm, 0.9m³ bucket, 600mm grouser shoe, operator, lubricant, coolant and full fuel tank.		
OPERATING MASS	20,9000 Kg	21,250 Kg
GROUND PRESSURE	0.046 MPa	0.043 MPa

WEIGHT AND GROUND PRESSURE	CX220C LR
6.4 m arm, 0.37 m³ bucket, 800mm grouser shoe, operator, lubricant, coolant and full fuel tank	
OPERATING MASS	23,300 Kg
GROUND PRESSURE	0.036 MPa

ENGINE	CX210C - CX220C	
Model	GF-4HK1X	
Type	Water-cooled, 4-cycle diesel, 4-cylinder in line, electronically controlled, high pressure common rail system, variable geometry turbocharger, air cooled intercooler	
Number of cylinders/displacement	l	5.19
Bore/Stroke	mm	115 x 125
Rated flywheel horse power		
Horsepower ISO 9249 (Net)	kW @ 1800 min ⁻¹	117.3
Horsepower ISO 14396 (Gross)	kW @ 1800 min ⁻¹	122
Maximum torque ISO 9249 (Net)	Nm @ 1600 min ⁻¹	608
Maximum torque ISO 14396 (Gross)	Nm @ 1600 min ⁻¹	624

HYDRAULIC SYSTEM		
Main pumps	2 variable displacement axial piston pumps with regulating system	
Max oil flow	l/min @ 1800 min ⁻¹	2 x 211
Working circuit pressure		
Boom/Arm/Bucket circuit	MPa	34.3
Boom/Arm/Bucket circuit (with auto power boost)	MPa	36.8
Swing circuit	MPa	29.4
Travel circuit	MPa	34.3

SWING		
Maximum swing speed	min ⁻¹	11.5
Swing torque	N-m	64,000

FILTERS		
Suction filter	µm	105
Return filter	µm	6
Pilot line filter	µm	8

TRAVEL		
Travel motor	Variable displacement axial piston motor (Automatic travel speed shifting)	
Max travel speed	km/h	5.6
Low travel speed	km/h	3.4
Gradeability	% (°)	70 (35)
Drawbar pull	kN	188

ELECTRICAL SYSTEM		
Circuit	24V	
Alternator	50 Amp	
Starter motor	5.0 kW	
Batteries		
Indonesia, Malaysia, Philippines	2x12V 88 Ah/5HR	
Thailand, Laos, Cambodia, Myanmar	2x12V 92 Ah/5HR	

UNDERCARRIAGE		
Number of carriers rollers (each side)	2	
Number of track rollers (each side)	7/8	
Number of shoes (each side)	46/49	
Type of shoe	Triple grouser shoe	

UNDERCARRIAGE		
Fuel tank	lt	410
Hydraulic system	l	240
Cooling system	l	29,8

Engine Crank Case

23.1 | Number of cylinders/displacement Bore/Stroke Max oil flow

LIFTING CAPACITIES

Front 360°	REACH											
	0 m		3.0 m		4.5 m		6.0 m		7.5 m		At max reach	

CX210 C, Arm Size: 1.9 m, Bucket: 1.0 m³ (820 kg), Shoes: 600 mm

7.5 m							4160*	4160*				3620*	3620*	6,47
6.0 m							4460*	4370	4110*	2920		3420*	2820	7,62
4.5 m				6340*	6340*		5050*	4240	4450*	2850		3390*	2330	8,28
3.0 m				7700*	6300		5890*	4000	4390	2720		3460	2100	8,59
1,5 m				8980*	5790		6120	3760	4260	2610		3400	2050	8,58
0 m				9490	5550		5940	3590	4170	2520		3560	2140	8,29
-1,5 m			10830*	10590	9440	5550	5880	3550	4190	2540		4020	2430	7,68
-3.0 m			12340*	11260*	8700*	5700	5960	3690				5000*	3080	6,7
-4.5 m			9480*	9480*	6650*	5900*						5090*	4650	5,25

Front 360°	REACH													
	1.5 m		3.0 m		4.5 m		6.0 m		7.5 m		9.0 m		At max reach	

CX210 C, Arm Size: 2.4 m, Bucket: 1.0 m³ (820 kg), Shoes: 600 mm

7.5 m							3710*	3710*					2900*	2900*	7.1
6.0 m							4050*	4050*	3770*	2970			2740*	2480	8.15
4.5 m				5680*	5680*		4600*	4290	4200*	2860			2730*	2070	8.76
3.0 m				7370*	6430		5540*	4030	4390	2720	3140*	1900	2810*	1870	9.05
1,5 m				8740*	5860		6090	3760	4250	2590	3110	1840	3000*	1820	9.05
0 m				6780*	6780*		9460	5530	5910	3560	4130	2480	3210	1890	8.77
-1,5 m	7260*	7260*	10120*	10120*	9390	5460	5810	3480	4100	2450			3570	2120	8.2
-3.0 m	10260*	10260*	13130*	11140	8970*	5570	5890	3560					4340	2620	7.28
-4.5 m			10750*	10750*	7480*	5850							4920*	3700	5.95

CX210 C, Arm Size: 2.9 m, Bucket: 0.9 m³ (680 kg), Shoes: 600 mm

7.5 m									2650*	2650*			1990*	1990*	7.74	
6.0 m									3510*	3140			1880*	1880*	8.69	
4.5 m						4240*	4240*		3980*	3030	2830*	2110	1870*	1870*	9.27	
3.0 m				9500*	9500*	6970*	6560	5280*	4210	4380*	2870	3310	2040	1940*	1800	9.53
1,5 m				7800*	7800*	8610*	6110	6160*	3920	4380	2720	3230	1950	2070*	1750	9.53
0 m				7610*	7610*	9480*	5690	6050	3690	4240	2590	3160	1890	2300*	1800	9.27
-1,5 m	6920*	6920*	9890*	9890*	9460	5530	5900	3560	4170	2520			2690*	1980	8.73	
-3.0 m	9150*	9150*	13550*	11050	9330*	5600	5930	3590	4230	2580			3410*	2360	7.88	
-4.5 m	12820*	12820*	12050*	11220	8270*	5810	5890*	3820					4860*	3140	6.64	

Front 360°	REACH											
	0 m		3.0 m		4.5 m		6.0 m		7.5 m		At max reach	

CX220 C, Arm Size: 1.9 m, Bucket: 1.0 m³ (820 kg), Shoes: 600 mm

7.5 m							4160*	4160*					3620*	3620*	6.47
6.0 m							4460*	4460*	4110*	3250			3410*	3140	7.62
4.5 m				6340*	6340*		5050*	4700	4450*	3180			3400*	2620	8.28
3.0 m				7690*	7040		5890*	4460	4840*	3050			3510*	2370	8.59
1,5 m				8980*	6520		6580*	4210	4840	2930			3730*	2320	8.58
0 m				9620*	6260		6790	4040	4750	2850			4060	2420	8.29
-1,5 m			10830*	10830*	9460*	6270	6730	4000	4770	2860			4580	2750	7.68
-3.0 m			12350*	12350*	8700*	6420	6290*	4140					5010*	3460	6.7
-4.5 m			9480*	9480*	6650*	6550*							5090*	5090*	5.25

Front 360°	REACH													
	1.5 m		3.0 m		4.5 m		6.0 m		7.5 m		9.0 m		At max reach	

CX220 C, Arm Size: 2.4 m, Bucket: 1.0 m³ (820 kg), Shoes: 600 mm

7.5 m							3710*	3710*					2900*	2900*	7.1
6.0 m							4040*	4040*	3770*	3300			2740*	2740*	8.15
4.5 m				5680*	5680*		4600*	4600*	4200*	3200			2720*	2340	8.76
3.0 m				7370*	7040		5540*	4490	4530*	3050	3140*	2160	2810*	2130	9.05
1,5 m				8740*	6590		6320*	4220	4830	2910	3340*	2090	2990*	2070	9.05
0 m				6780*	6780*	9520*	6250	6730	4010	4710	2810		3320*	2160	8.77
-1,5 m	7260*	7260*	10120*	10120*	9480*	6170	6660	3930	4680	2770			3910*	2410	8.2
-3.0 m	10250*	10250*	13130*	12590	8970*	6280	6510*	4010					4680*	2960	7.28
-4.5 m			10750*	10750*	7480*	6480							4940*	4160	5.95

Front 360°	REACH													
	1.5 m		3.0 m		4.5 m		6.0 m		7.5 m		9.0 m		At max reach	

CX220 C, Arm Size: 2.9 m, Bucket: 0.9 m³ (680 kg), Shoes: 600 mm

7.5 m										2640*	2640*			1990*	1990*	7.73
6.0 m										3510*	3450*			1880*	1880*	8.69
4.5 m										4240*	4240*			2830*	2360	9.27
3.0 m										5280*	4680	4380*	3200	3750	2290	9.53
1.5 m										6160*	4380	4920	3040	3670	2210	9.53
0 m										6760*	4140	4820	2910	3600	2150	9.27
-1.5 m	6920*	6920*	9880*	9880*	9610*	6250	6750	4010	4750	2850				2690*	2250	8.73
-3.0 m	9140*	9140*	13550*	12680	9330*	6310	6730	4040	4790	2900				3410*	2670	7.88
-4.5 m	12810*	12810*	12050*	12050*	8270*	6520	5890*	4260						4870*	3530	6.64

Front 360°	REACH													
	0 m		3.0 m		6.0 m		9.0 m		12.0 m		15.0 m		At max reach	

CX220 C, Arm Size: 2.9 m, Bucket: 0.9 m³ (680 kg), Shoes: 600 mm

12.0 m														950*	950*	11,46
10.5 m										1530*	1530*			890*	890*	12,68
9.0 m										1690*	1690*			850*	850*	13,61
7.5 m										1750*	1750*			840*	840*	14,31
6.0 m										1840*	1790*			850*	850*	14,8
4.5 m										2280*	2280*	1970*	1720	1070*	970	15,13
3.0 m										5320*	5320*	3770*	3770*	2680*	2680*	15,3
1.5 m										3110*	3110*	4690*	4650	3060*	2540	15,31
0 m										2330*	2330*	5490*	4210	3410*	2320	15,17
-1.5 m	1750*	1750*	2710*	2710*	6040*	3840	3570	2140	2270	1310				1140*	840	14,87
-3.0 m	2310*	2310*	3250*	3250*	6300	3640	3430	2010	2210	1250				1290*	880	14,4
-4.5 m	2940*	2940*	3900*	3900*	6220	3580	3370	1950	2180	1220				1490*	970	13,76
-6.0 m	3480*	3480*	4660*	4660*	6250	3620	3370	1960	2210	1250				1790*	1100	12,91
-7.5 m	4020*	4020*	5790*	5790*	6090*	3720	3420	2020						2290*	1320	11,81
-9.0 m			7150*	7150*	5550*	3900	3480*	2160						2740*	1700	10,39
-10.5 m			8270*	8270*	4590*	4170								2890*	2430	8,51

STANDARD EQUIPMENT

ENGINE

Std configuration for temperatures -25° +50° c
 Turbocharger with air cooled intercooler
 Double element air cleaner
 Pre fuel filter
 Fuel filter w/ water separator
 Automatic/manual engine return to idle
 Neutral safety start
 Emergency stop
 Warm up mode
 Dial type throttle control
 Glow-plug pre-heat
 Tropical package

HYDRAULIC SYSTEM

2 variable flow piston pumps
 Auto/heavy/super power working modes
 Auto power boost
 Swing priority (swing+arm)
 Travel speed change

Selectable working modes
 Pre-set auxiliary pump settings
 Iso pattern controls
 Arm and boom regeneration
 Straight travel valve
 100% return oil filtration

CAB AND OPERATOR COMPARTMENT

Pre-disposal for the optional cab protection
 Pressurized cab ac/heat/defrost w/ auto climate control
 Tilting consoles - 4-position
 Mechanical suspended seat
 Arm rest
 Color lcd monitor display
 Auxiliary select system
 Rubber floormat
 One-piece right hand window
 Windshield wiper / washer
 Storage compartments

On-board diagnostic system
 Standard handrails
 Sliding front window - storable
 Cab top lights
 High band am/fm radio
 Rh front console w/ clock and cell phone holder
 Rear mirror (mounted on cab)
 Rear mirror (mounted on tool box)

EQUIPMENT AND UNDERCARRIAGE

5,70 meter boom
 Boom mounted work light (70 watt)
 Bucket linkage
 EMS pins and bushings
 bushings as standard
 Sealed and lubricated tracks

OPTIONAL EQUIPMENT

CAB AND OPERATOR COMPARTMENT

Rops/fops protection
 Sun visor & rain deflector
 Sun shade
 Case telematics

EQUIPMENT AND UNDERCARRIAGE

Arm 1.90m
 Arm 2.40m
 Arm 2.94m
 HD bucket linkage with hook

Arm and boom hose burst check valves
 600mm triple grouser steel shoes
 700mm triple grouser steel shoes
 800mm triple grouser steel shoes
 Single track guide
 Triple track guide
 Auxiliary single acting circuit
 Auxiliary single or double acting circuit
 Auxiliary double acting circuit

Hose burst control valve on boom & arm cylinder with over load warning device
 Arm and boom burst check valves
 Refuel pump
 Upper front screen (mesh type)
 Front grill (bar, opg1)
 Front grill (bar, opg2)
 Air-pre cleaner - cup type
 Air-pre cleaner - cyclone type

BUILDING A STRONG CASE.

Since 1842, at CASE Construction Equipment we have lived by an unwavering commitment to build practical, intuitive solutions that deliver both efficiency and productivity.

We continually strive to make it easier for our customers to implement emerging technologies and new compliance mandates.

Today, our global scale combined with our local expertise enables us to keep customers' real-world challenges at the center of our product development.

The vast CASE dealers' network is always ready to support and protect your investment and exceed your expectations, while also providing you with the ultimate ownership experience.

Our goal is to build both stronger machines—and stronger communities. At the end of the day, we do what's right for our customers and our communities so that they can count on CASE.

CaseCE.com

NOTE: Standard and optional fittings can vary according to the demands and specific regulations of each country. The illustrations may include optional rather than standard fittings - consult your Case dealer. Furthermore, CNH Industrial reserves the right to modify machine specifications without incurring any obligation relating to such changes.

Conforms to directive 2006/42/EC

