

570N EP | 580EV | Utility Plus | 580N EP | 580SV SS | 580SV CP | 580 Super N | 580 Super N WT | 590 Super N | 695SV SS | 695SV CP

BACKHOE LOADERS & TRACTOR LOADERS



CASE
CONSTRUCTION

GETTING THE JOB DONE, CASE AFTER CASE.



Every day, the case for CASE Construction Equipment grows stronger — from delivering smart solutions for tough on-site challenges to providing the next generation of builders the tools needed to succeed. Backed by more than 180 years of grit, sweat and get-the-job-done efficiency, CASE has pioneered a wide range of road construction equipment and was the first to introduce a factory-integrated backhoe loader in 1957. More recently, CASE became the first to commercially release an electric backhoe loader with the debut of the 580EV in 2024.

BACKHOE LOADERS (TLB) & TRACTOR LOADERS (TL)

02 CASE Story

04 TLB Overview

05 TLB Features & Benefits

10 TL Features & Benefits

12 Specifications

17 Attachments

18 Value of Support



BACKHOE LOADERS



FOR JOBS THAT NEED A LITTLE EXTRA BACKUP.

CASE backhoe loaders have been digging and lifting since 1957—the kind of reliable backup you can count on for all kinds of jobs. Whether you need the steadfast support of standard N Series backhoe loaders, extra utility from our 580SV and 695 SV loaders, clean and quiet operation with the 580EV electric backhoe loader or the straightforward, no-nonsense Utility Plus backhoe loader operators have come to know and love, our lineup has options for any—and every—task.



580EV



Utility Plus



580SV SS / 580SV CP



580 Super N



580 Super N WT



590 Super N



695SV SS / 695SV CP



GET A LOAD OF THESE FEATURES.

What needs tackling next? See how our N Series backhoe loaders combine big power with tons of flexibility for even more on-the-job productivity.



1 MORE POWER WHERE YOU NEED IT.

Activate PowerLift™ to increase backhoe hydraulic pressure, upping your lifting and placing capabilities. Use CASE-exclusive PowerBoost™ for a temporary jolt to your breakout force without affecting engine rpms (revolutions per minute).

2 REVOLUTIONARY LOADING AND ROADING.

Long loader arms and in-line linkage help you easily load trucks and bins. A revolutionary over-center backhoe design puts weight to the front axle to make riding and roading a cinch.

3 MORE SAVINGS. LESS FUEL.

Don't overspend on fuel—CASE N Series backhoe loaders come with features like ECO-mode, auto-idle and auto-shutdown to slash fuel consumption and keep operating costs low.

4 EASY SERVICE.

Ground-level service points are grouped for quick and easy tool-free maintenance.

5 NO DEF, NO REGEN.

No diesel exhaust fluid, no diesel particulate filter and no regeneration means lower operating costs, less downtime and more fuel efficiency.

6 MORE THAN A COUPLE COUPLER OPTIONS.

CASE N Series backhoe loaders feature mechanical and hydraulic couplers, including universal mechanical quick couplers for non-CASE attachments.

7 GET MORE DONE WITH A SINGLE MACHINE.

Powerful two-in-one performance with countless attachment options.

KINGS OF CONSTRUCTION.

Meet the ultimate jobsite conquerers—CASE SV Series backhoe loaders. These fearsome four-wheelers come packed with lots of tried-and-true backhoe loader features while offering the kind of lift capacity and breakout force expected of a multi-purpose, jobsite-crushing king.



1 ENGINE POWER AND PROTECTION.

Get more power and uptime with the proven F5 FPT engine. No Diesel Particulate Filter (DPF) eliminates regeneration downtime and reduces fuel use, helping you do more with less overhead.

2 BOOSTED POWER.

Need more power? The new PowerLift™ lets you up your lifting capacity for precise load placement, while the new PowerBoost™ increases your backhoe breakout force to smash through frost and tough ground.

3 TAKE YOUR BUSINESS ANYWHERE.

The new optional PowerDrive™ Powershift transmission increases your roading performance, especially uphill, without slowing you down. You also get an autoshift option and FNR loader switch, reducing cycle times for more productivity.

4 EASY SERVICE.

Take care of business quickly with a 1-piece tilt-up hood that offers instant access to important service points for daily maintenance checks.

5 TWO BOOM MOUNTING STYLES.

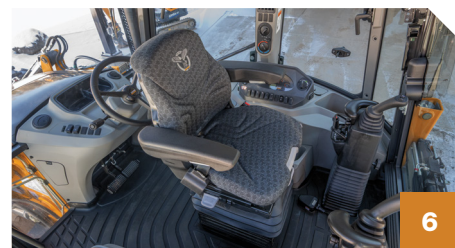
Choose a traditional center pivot boom for proven performance — or a side shift boom that allows for a greater line of sight, square hole digging, the ability to operate parallel to walls and more.

6 THE KING OF COMFORT.

CASE SV Series backhoe loaders offer generous leg and side room, along with floor-to-ceiling rear windows for exceptional visibility and airflow.

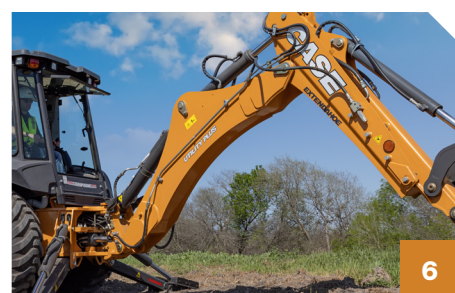
7 GO ANYWHERE.

Take your operation anywhere with four equal-sized tires with 4WD and 4-wheel steer capabilities on the 695SV backhoe loader, giving you more versatility for tight radius turns and crab crawling.



THE MOST VALUABLE UTILITY PLAYER.

The CASE Utility Plus backhoe loader is the go-to solution for rental operations and municipalities that want full-size performance without added complexity. From its simple, emissions-friendly engine to its proven CASE reliability, this machine delivers exactly what you need—without anything you don't.



1 BUILT FOR BETTER BUCKET VISIBILITY.

Loader arm design improves line of sight to attachments and the bucket — ideal for precision loading and grading. A standard anti-bucket rollback feature helps reduce spillage and retain more material.

2 74 HORSES. ZERO FLUID HASSLES.

Powered by a 74 hp, 3.4-liter FPT engine that meets Tier 4 Final standards with no DEF, no DPF and no regeneration. This means lower costs, fewer service interruptions and better fuel efficiency—all with just a simple fuel-up and go.

3 BIG COMFORT. CLEAR VISIBILITY.

Whether you opt for canopy or cab, the roomy operator station features tons of legroom, swivel space and excellent visibility. Choose the cab for a full floor-to-ceiling rear window that improves sightlines and communication on the job.

4 TRANSMISSION THAT HANDLES THE TOUGH STUFF.

A 4WD power shuttle synchromesh transmission with four forward and four reverse gears keeps you moving confidently through tight, muddy or uneven terrain.

5 STABILIZE ON ANY SURFACE.

Reversible stabilizer pads let you switch easily between pavement and rough ground — giving you the grip you need without tearing up improved surfaces.

6 CURVED BOOM WITH BUILT-IN ADVANTAGE.

The in-line cylinder curved boom gives you stronger sightlines and a durable, efficient design with fewer grease points. It's built to accept an optional Extendahoe® and engineered to reduce weight, while boosting lift capacity and stability when extended.

THE FIRST-EVER ELECTRIC BACKHOE.

We designed the first-ever electric backhoe loader to help you tackle jobs that call for clean, quiet operation without sacrificing performance power.



1 A JOLT OF POWER.

The 580EV utilizes electric motors that provide instantaneous torque across all operating speeds for optimal performance and includes features like PowerLift™ and PowerBoost™, which work to increase breakout force when lifting and digging through tough ground.

2 ZERO EMISSIONS, LOW NOISE.

With low noise and zero emissions, the CASE 580EV electric backhoe loader gives you all the tools needed to work specialized jobs—think urban locations, indoors, for a municipality or a utility.

3 CUT DOWN ON MAINTENANCE.

With no internal combustion engine to service or refuel, the 580EV dramatically cuts down on maintenance costs over time, with an estimated 30–40% savings from its zero engine oil, filter or aftertreatment system design.

4 TOTAL EFFICIENCY.

This beast only taps into power when work is getting done—which means minimal energy is wasted and components don't wear while it's not in operation. The 8-inch color display features adjustable settings, enabling the 580EV to operate optimally for any given task.

5 HOURS OF UPTIME.

A 400-volt lithium-ion battery system offers up to 8 hours of reliable runtime for backhoe digging operations.

TRACTOR LOADERS >>>>>>>>



LOADED WITH FEATURES.

Meet the CASE 570N EP tractor loader—a no-nonsense construction conqueror designed to defeat your most demanding challenges. Combine next-level lifting capacity, lightning-fast ground speeds, a frame engineered to outlast the competition and plenty of operator-first features for a machine that excels at dozing, ripping, grading and scraping in equal measure.



1 LOTS OF STAYING POWER.

A crushing 6,503 lb lifting capacity and strong pushing power help you haul, lift, move, rip, grade and scrape whatever comes your way, while a 24 mph (39 kph) max ground speed and hydraulically assisted brakes help you move between tasks quickly and smoothly.

2 CUT WHEEL TURNS IN HALF.

Optional Comfort Steer™ reduces lock-to-lock rotations when moving from full right to full left and back, helping you load, stockpile and backfill faster without discomfort.

3 NO DEF. NO NONSENSE.

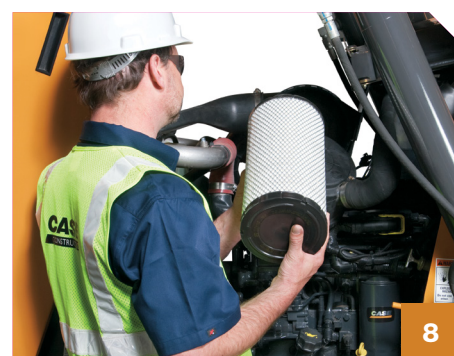
The 570N EP uses a straightforward Diesel Oxidation Catalyst (DOC) to meet Tier 4 Final emissions standards—no fluid to add, no diesel particulate filter (DPF) to replace and zero fuel-burning regeneration required.

4 PIVOT TO THE JOB AT HAND.

A roomy cab puts you in total control with intuitive switch placement and a three-position swivel seat that pivots 15 and 30 degrees right, letting you monitor rear-facing attachments without breaking a sweat.

5 HITCH YOUR WAY.

A one-of-a-kind three-point hitch features adjustable calipers, allowing you to fine-tune the amount of sway in rear attachments for better precision.



6 SMOOTH RIDING.

Ride Control™ transforms rough terrain into smooth sailing. This push-button loader arm stabilization option prevents bucket bounce, eliminating spillage and delivering a smoother ride.

7 TURN DATA INTO ACTION.

A CASE SiteWatch™ telematics subscription—which comes standard with the 570N EP gives you remote performance metrics, maintenance tracking, proactive service support and more. Connect with your machine and optimize your fleet from anywhere.

8 ONE-STOP MAINTENANCE.

All your service points. One spot. Check engine oil, oil filters, transmission fluid and coolant levels from a single ground-level point beneath the flip-up hood.

9 CONSTRUCTION-GRADE SUPPORT.

On top of remote diagnostics options, access CASE's network of 300+ dealer locations with technicians ready for scheduled maintenance, repairs and support.

BUILT TO SPEC.



SPECIFICATIONS	580EV	Utility Plus	580SV SS	580SV CP
Engine	Powertrain Battery-electric	FPT F5	FPT F5	FPT F5
Displacement/Cylinders — in³ (L)	Battery Net Usable Capacity 72.2 kWh	207 (3.4) / 4	207 (3.4) / 4	207 (3.4) / 4
Emissions Certification* Solutions	Zero Emissions	Tier 4 Final (DOC)	Tier 4 Final (SCR)	Tier 4 Final (SCR)
Gross Horsepower @ 2200 rpm — hp (kW)	Traction Motor Power (Rated) 108 (80)	74 (55)	97 (72)	97 (72)
Net Horsepower @ 2200 rpm — hp (kW)	Implement Motor Power (Rated) 55 (41)	68 (51)	95 (71)	95 (71)
Maximum Net Torque @ 1400 rpm — lbft (Nm)	—	220 (298)	333 (452)	333 (452)
Operating Weight 4WD — lb (kg)	19,947 (9 048)	18,298 (8 300)	19,445 (8 820)	18,761 (8 510)
Max Travel Speed (Forward) — mph (kph)	22.4 (36)	21.1 (34.0)	24.4 (39.3)	24.4 (39.3)
System Flow — gpm (L/min)	30 (113)	32.5 (123)	36 (136)	36 (136)
Backhoe Bucket Force — lbf (daN)	14,452 (6 424)	12,359 (5 498)	15,302 (6 807)	15,302 (6 807)
Backhoe Boom Lift Capacity @ Groundline — lb (kg)	3,527 (1 600)	3,469 (1 577)	3,956 (1 798)	3,956 (1 798)
Loader Bucket Breakout Force — lbf (daN)	10,946 (4 869)	13,788 (6 129)	15,521 (6 904)	15,521 (6 904)
Loader Lift Capacity @ Full Height — lb (kg)	7,044 (3 195)	8,157 (3 700)	7,606 (3 450)	7,606 (3 450)
DIMENSIONS	580EV	Utility Plus	580SV SS	580SV CP
Height to Top of Cab — in (mm)	107 (2 717)	111 (2 825)	113 (2 860)	113 (2 860)
Bucket Hinge Pin Height (Loader Fully Raised) — in (mm)	135 (3 417)	141 (3 580)	133 (3 384)	133 (3 384)
Overall Operating Height (Loader Fully Raised) — in (mm)	165 (4 183)	173 (4 400)	173 (4 388)	173 (4 388)
Dump Angle @ Full Height (Loader)	47°	45°	47°	47°
Dump Clearance @ Full Height (Loader, 45° Dump) — in (mm)	106 (2 690)	108 (2 732)	101 (2 554)	101 (2 554)
Dump Reach @ Full Height (Loader, 45° Dump) — in (mm)	31.5 (801)	45.3 (1 147)	33 (828)	33 (828)
Loader Bucket Rollback @ Groundline	42°	33°	44°	44°
Digging Depth Below Grade (Loader Bucket Flat) — in (mm)	6.1 (155)	4.3 (110)	8.7 (221)	8.7 (221)
Wheelbase — in (mm)	84 (2 134)	85.6 (2 175)	86 (2 180)	86 (2 180)
Reach from Front Axle Centerline (Loader Bucket on Ground) — in (mm)	81 (2 052)	78 (1 980)	82 (2 070)	82 (2 070)
Turning Radius at Curb, 4WD (Brakes Applied) — in (mm)	132 (3 360)	136 (3 450)	175 (4 440)	175 (4 440)
Backhoe Dig Depth — in (mm)	215 (5 470)	220 (5 584)	228 (5 785)	228 (5 785)

*DOC = Diesel Oxidation Catalyst, SCR = Selective Catalytic Reduction.

MADE TO LAST.



SPECIFICATIONS	580 Super N	580 Super N WT	590 Super N	695SV SS	695SV CP
Engine	FPT F5	FPT F5	FPT F5	FPT F5	FPT F5
Displacement/Cylinders — in³ (L)	207 (3.4) / 4	207 (3.4) / 4	207 (3.4) / 4	207 (3.4) / 4	207 (3.4) / 4
Emissions Certification* Solutions	Tier 4 Final (SCR)	Tier 4 Final (SCR)	Tier 4 Final (SCR)	Tier 4 Final (SCR)	Tier 4 Final (SCR)
Gross Horsepower @ 2200 rpm — hp (kW)	97 (72)	110 (82)	110 (82)	110 (82)	110 (82)
Net Horsepower @ 2200 rpm — hp (kW)	95 (71)	108 (81)	108 (81)	108 (81)	108 (81)
Maximum Net Torque @ 1400 rpm — lbf (Nm)	333 (452)	338 (459)	338 (459)	338 (459)	338 (459)
Operating Weight 4WD — lb (kg)	19,604 (8 892)	20,077 (9 107)	20,523 (9 309)	22,245 (10 090)	9,930 (9 040)
Max Travel Speed (Forward) — mph (kph)	25.0 (40.2)	25.0 (40.2)	25.2 (40.6)	27.0 (43.5)	27.0 (43.5)
System Flow — gpm (L/min)	41 (156.2)	41 (156.2)	43 (162.6)	36 (136)	36 (136)
Backhoe Bucket Force — lbf (daN)	14,452 (6 424)	15,070 (67.0)	15,853 (70.5)	15,302 (6 807)	15,302 (6 807)
Backhoe Boom Lift Capacity @ Groundline — lb (kg)	3,513 (1 594)	3,761 (1 706)	3,528 (1 600)	3,257 (1 481)	3,257 (1 481)
Loader Bucket Breakout Force — lbf (daN)	10,947 (4 965)	10,873 (4 837)	12,776 (5 683)	14,232 (6 331)	14,232 (6 331)
Loader Lift Capacity @ Full Height — lb (kg)	7,044 (3 195)	8,425 (3 822)	8,202 (3 721)	7,452 (3 380)	7,452 (3 380)
DIMENSIONS	580 Super N	580 Super N WT	590 Super N	695SV SS	695SV CP
Height to Top of Cab — in (mm)	107 (2 717)	107 (2 728)	107 (2 728)	118 (2 986)	118 (2 986)
Bucket Hinge Pin Height (Loader Fully Raised) — in (mm)	135 (3 417)	138 (3 497)	138 (3 497)	137 (3 490)	137 (3 490)
Overall Operating Height (Loader Fully Raised) — in (mm)	165 (4 183)	167 (4 242)	167 (4 242)	177 (4 490)	177 (4 490)
Dump Angle @ Full Height (Loader)	47°	45°	40°	55°	55°
Dump Clearance @ Full Height (Loader, 45° Dump) — in (mm)	106 (2 690)	107 (2 730)	107 (2 727)	103 (2 613)	103 (2 613)
Dump Reach @ Full Height (Loader, 45° Dump) — in (mm)	31.5 (801)	27.0 (685)	29.2 (741)	24 (606)	24 (606)
Loader Bucket Rollback @ Groundline	42°	40°	42°	45°	45°
Digging Depth Below Grade (Loader Bucket Flat) — in (mm)	6.1 (155)	6.1 (156)	6.2 (157)	5.5 (139)	5.5 (139)
Wheelbase — in (mm)	84 (2 134)	84.5 (2 146)	84.5 (2 150)	87 (2 200)	87 (2 200)
Reach from Front Axle Centerline (Loader Bucket on Ground) — in (mm)	81 (2 052)	81 (2 050)	81 (2 050)	81 (2 061)	81 (2 061)
Turning Radius at Curb, 4WD (Brakes Applied) — in (mm)	132 (3 360)	144 (3 645)	150 (3 812)	188 (4 770)	188 (4 770)
Backhoe Dig Depth — in (mm)	215 (5 470)	216 (5 482)	234 (5 940)	225 (5 707)	224 (5 687)

*DOC = Diesel Oxidation Catalyst, SCR = Selective Catalytic Reduction.

METRICS THAT MATTER.



SPECIFICATIONS	570N EP
Engine	FPT F5
Displacement/Cylinders — in³ (L)	207 (3.4)/4
Emissions Certification Solutions*	Tier 4 Final (DOC)
Gross Horsepower @ 2200 rpm – hp (kW)	74 (55)
Net Horsepower @ 2200 rpm – hp (kW)	72 (54)
Maximum Net Torque – lbft (Nm)	228 (310)
System Flow — gpm (L/min)	28.5 (108)
Maximum Travel Speed (Forward) — mph (kph)	24 (38.6)
3-Point Hitch Vertical Force – lbft (daN)	3,501 (1 557)
Lift Capacity @ Full Height – lb (kg)	6,503 (2 950)
Operating Weight 4WD – lb (kg)	14,508 (6 581)
Lift Cylinders Breakout Force – lbft (daN)	9,271 (4 124)
Dump Cylinders Breakout Force – lbft (daN)	9,607 (4 273)
DIMENSIONS	570N EP
Height to Top of Cab — in (mm)	108 (2 739)
Bucket Hinge Pin Height (Fully Raised) — in (mm)	135 (3 413)
Overall Operating Height (Fully Raised) — in (mm)	164 (4 170)
Overall Length with 3-Point Hitch — in (mm)	203 (5 154)
Dump Angle @ Full Height — degrees	46
Dump Clearance @ Full Height (45° Dump) — in (mm)	115 (2 934)
Dump Reach @ Full Height (45° Dump) — in (mm)	26 (657)
Bucket Rollback @ Groundline — degrees	40
Digging Depth Below Grade (Bucket Flat) — in (mm)	7.8 (199)
Wheelbase — in (mm)	84 (2 146)
Reach from Front Axle Centerline (Bucket on Ground) — in (mm)	75 (1 891)
Turning Radius at Curb, 4WD (Brakes Applied) — in (mm)	139 (3 520)

Loader dimensions taken with a 4WD, 19.5 L x 24.0 rear tires and 82 in (2.08 m) general-purpose bucket, except as noted.

*DOC = Diesel Oxidation Catalyst

CHARGED UP & READY TO CONQUER.



ELECTRICAL POWERTRAIN	580EV
Nominal Battery Voltage	400V
Total Battery Capacity — kWh	85.5
Usable Battery Capacity — kWh	72.7
On-Board Charger	SAE J1772 Level 2
Charging Time: 20–80% — hr	4.4
Charging Time: 0–100% — hr	7.4
Run Time — hr	4–8 (depending on application)
Motor Power (Traction):	
Rated — hp (kW)	108 (80)
Peak — hp (kW)	127 (95)

MOTOR POWER (HYDRAULICS)	
Rated — hp (kW)	55 (41)
Peak — hp (kW)	106 (79)
WARRANTY	580EV
Vehicle Base Warranty	1-year/unlimited-hour
Electric EV Components Warranty*	3-year/3,000-hour
EV Care**	3-year/3,000-hour

*Includes all high voltage electric powertrain system components including battery, motors, inverters, etc. **More details on EV Care available on page 19.

THE RIGHT MACHINE. NO COMPROMISES.

SPECIFICATIONS	580EV	Utility Plus	580SV (SS & CP)	580SN	580SN WT	590SN	695SV (SS & CP)	570N EP
ROPS/FOPS Certified Protective Cab with Heater and A/C	●	○	○	○	○	○	●	○
ROPS/FOPS Certified Protective Canopy	—	●	●	●	●	●	—	●
Mechanical Suspension Seat	—	●	●	●	●	●	●	●
Premium Air Suspension Seat with Heat	●	—	○	○	○	○	○	—
Bluetooth® Radio	●	○	○	○	○	○	●	○
Fuel Economy Features Including Auto Idle	●	—	●	●	●	●	●	—
Auto Engine Protection Shutdown	—	—	●	●	●	●	●	—
LED Lights	●	○	○	○	○	○	○	○
Cold Weather Package	○	—	○	○	○	○	○	—
Case SiteWatch™ Telematics (Includes Hardware and a 5-yr Advanced Data Subscription)	●	●	●	●	●	●	●	●
LOADER	580EV	Utility Plus	580SV (SS & CP)	580SN	580SN WT	590SN	695SV (SS & CP)	570N EP
PowerDrive Powershift Transmission	●	—	○	○	●	○	●	—
Forward-Neutral-Reverse Switch on Loader Control Lever	●	—	○	○	●	○	●	—
Differential Lock	●	—	●	●	—	●	—	●
Limited Slip Differentials	—	—	—	—	●	—	●	—
Speed Selectable Auto Ride Control	●	—	○	○	○	○	○	○
Comfort Steer™ for Quick Turns during Loading Operations	●	—	○	○	○	○	○	○
On-The-Go Electric 4WD Control	●	●	●	●	●	●	●	●
Reverse Parallel Linkage Loader Arms with Parallel Lift in Both Directions	●	—	—	●	●	●	—	●
Tool Carrier Loader Arms with Parallel Lift in Both Directions	—	—	●	—	—	—	●	—
Straight Loader Arms with Anti-Bucket Rollback	—	●	—	—	—	—	—	—
3-Spool Auxiliary Loader Hydraulics	●	○	○	○	○	○	○	○
FFC Front Quick Attach Coupler	○	○	○	○	○	○	○	○
BACKHOE	580EV	Utility Plus	580SV (SS & CP)	580SN	580SN WT	590SN	695SV (SS & CP)	570N EP
CASE 4-Stick Backhoe Controls with Foot Swing	—	—	—	●	●	●	—	—
Mechanical 2-Lever Backhoe Controls	—	●	—	○	○	○	—	—
Pilot Backhoe Controls with Switchable Control Patterns	EH	○	●	○	○	○	●	—
In-Line Cylinder Curved Boom Backhoe Design	—	●	●	—	—	—	●	—
Overlapping Cylinder Straight Boom Design	●	—	○	●	●	●	○	—
Over Center Backhoe Design for Improved Rooding/Loading	●	—	—	●	●	●	—	—
Extendahoe®	●	○	○	○	○	○	●	—
PowerLift™ and PowerBoost™	●	—	●	○	○	○	●	—
ProControl Swing Dampening for Precise Boom Placement	●	—	●	●	●	●	●	—
1-way Auxiliary Hammer Backhoe Hydraulics	—	●	○	○	○	○	○	—
Combo 1-way/2-way Auxiliary Backhoe Hydraulics	●	—	○	○	○	○	○	—
Hydraulic Thumb	○	—	○	○	○	○	○	—
Backhoe Hydraulic Quick Coupler	●	—	—	○	○	○	—	—

● Standard ○ Optional — Not Applicable EH Electrohydraulic

GO AHEAD. GET ATTACHED.

On top of handling a wide array of buckets, forks, grapples and other attachments, the CASE 570N EP tractor loader offers a CASE box scraper and is compatible with standard Category 1 and Category 2 hitch implements. Meanwhile, CASE backhoe loaders offer all sorts of options for endless attachment versatility—no matter the job.



See our full line at
**CASECE.COM/
ATTACHMENTS**



Auger



Plate Compactor



Hydraulic Breaker



Bale Spear



Scrap Grapple Bucket



Pallet Fork



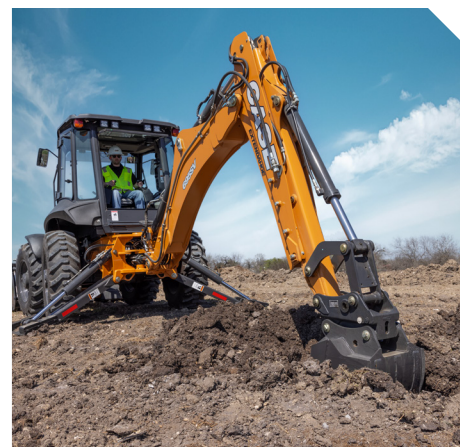
4-in-1 Bucket



Snow Blade



Arctic® Sectional Sno-Pusher™



NO ONE OUTWORKS US.

The customer doesn't just come first — you're at the center of everything we do. Your local CASE specialists are ready to help you do more of everything you do best: maximizing production, cutting costs and improving safety through a variety of services and technology.



Base & Extended Limited Warranty Coverage.*

- 1-year/Unlimited-hour full-coverage base limited warranty
- 2-year/2,000-hour extended limited engine and drivetrain warranty. Discuss the extended warranty coverage details with your dealer.

CNH CAPITAL Performance Equipment Demands Performance Financing.

From protection plans to customized leasing packages, our financial solutions through CNH Capital are engineered for businesses that don't have time for downtime.



Tech that Delivers.

Command Your Fleet with SiteWatch™ Telematics

CASE SiteWatch Telematics puts real-time data in your hands. Track location, monitor working status and anticipate maintenance needs across your entire fleet — helping you turn good data into good decisions.

Precision Machine Control that Pays for Itself

SiteControl machine control solutions don't just improve accuracy — they transform profitability. Up your efficiency, productivity and profits anywhere the job takes you.

Local Support. National Strength.

We back tough equipment with even tougher support. With over 300 dealer locations across North America, CASE delivers the right equipment, financing solutions and after-sale support to keep your business moving forward. That's the kind of boots-on-the-ground business support you can expect — and rely on — from CASE.

*See your CASE dealer for limitations, exclusions and confirmation of policies in effect. Engine/EV Batteries warranty coverage provided through CASE. Second year machine warranty coverage applies after base warranty expires.



Protect Your Investment.

EV Care

EV Care is our unique and comprehensive support package exclusively available for our EV models. EV Care consists of a 5-year Advanced SiteWatch™ Subscription, a 3-year/3,000-hour battery and EV components factory warranty and 3-year/3,000-hour planned maintenance.

PlusCare

Choose service options that match how hard you work. CASE PlusCare protects your equipment investment with customizable maintenance support tailored to your operation's demands. [Scan QR code for more information >](#)



Planned Maintenance Agreements (PMAs)

Get clear, detailed maintenance plans that maximize performance while driving down operating costs, allowing you to focus on what matters — building your business.

Purchased Protection Plan (PPP)

Get protection beyond the base warranty period for both new and used CASE equipment, with flexible payment options and customizable terms through CNH Capital.

COUNTLESS SOLUTIONS



Mini Track Loaders



Skid Steer Loaders



Compact Track Loaders



Compact Dozer Loaders



Mini Excavators



Midi Excavators



Small Articulated Loaders



Compact Wheel Loaders



Electric Vehicles



Backhoe Loaders



Tractor Loaders



Rough Terrain Forklifts



Compaction



Dozers



Large Wheel Loaders



Motor Graders



Wheeled Excavators



Large Excavators

NO ONE WILL OUTWORK US.™

CASE
CONSTRUCTION

©2025 CNH Industrial America LLC. All rights reserved. CASE, CNH Industrial Capital and CNH Industrial are trademarks registered in the United States and many other countries, owned by or licensed to CNH Industrial N.V., its subsidiaries or affiliates. Any trademarks referred to herein, in association with goods and/or services of companies other than CNH Industrial America LLC., are the property of those respective companies.

Form No. CCE202507TLTLB

IMPORTANT: CASE Construction Equipment Inc. reserves the right to change these specifications without notice and without incurring any obligation relating to such change. Availability of some models and equipment builds vary according to the country in which the equipment is used. The illustrations and text may include optional equipment and accessories and may not include all standard equipment. Your CASE dealer/distributor will be able to give you details of the products and their specifications available in your area.

CASE Construction Equipment is biodiesel-friendly.

NOTE: All engines meet current EPA emissions regulations. All specifications are stated in accordance with SAE Standards or Recommended Practices, where applicable.

Always read the Operator's Manual before operating equipment. Inspect equipment before using it, and be sure it is operating properly. Follow the product safety signs and use any safety features provided.