

ENGINE

Model	FPT NEF6
Emissions Certification	Tier 4 Final/Stage V
Fuel	Requires ultra low-sulfur fuel B5 biodiesel tolerant
Type	Water-cooled, 4-cycle diesel, 6-cylinder in-line high pressure common rail system – electric control, Fixed geometry turbocharger w/ air cooled intercooler, ATS, EGR-free
Cylinders	6-cylinder in-line
Piston displacement	411 in ³ (6 728 cm ³)
Bore/Stroke	4.09 x 5.20 in (104 X 132 mm)
Fuel injection	High pressure common rail system – electronic
Fuel filter	Replaceable, full flow spin-on cartridge
Air filter	Dry type dual element w/ warning restriction indicator
Oil filter	Replaceable, full flow spin-on cartridge
Engine gradeability:	
Side-to-side	35°
Fore and aft	35°
Rated flywheel horse power – SAE J1349 @ 1900 RPM:	
ISO 9249	259 hp (193.4 kW)
ISO 14396	274 hp (204 kW)
Net max. torque – SAE J1349 @ 1500 RPM:	
ISO 9249	737 lbf-ft (999 N-m)
ISO 14396	762 lbf-ft (1 033 N-m)
Cooling operating range:	112° to -4°F (50° to -20°C)
Oil	Requires low-ash oil CJ-4

DRIVETRAIN

Travel control	Dual stage relief/ counter balance design
Brakes	Mechanical disc
Two speed travel:	
Max. high speed	3.3 mph (5.3 km/h)
Max. low speed	2.0 mph (3.2 km/h)
Automatic downshift	
Drawbar pull	55,500 lbf (247 kN)
Gradeability	70% – 35° Slope

ELECTRICAL

Voltage	24 Volts
Alternator rating	90 amp
Batteries	2 x 12 Volt
Battery reserve capacity	128 Ah/5 hour
Work lights – 4 1 boom, 1 upper, 2 cab	24 Volt/70 watt
Starter	24 V (5.5 kW)

OPERATOR ENVIRONMENT

Air conditioner output	18,100 BTU/hr
Heater output	20,150 BTU/hr
Sound level inside cab – ISO6396	70 dBA
Electrical outlet	12 Volt
Cab interior light	10 watt
Rear and side view cameras	

Operator's Cab:

Smooth and round shape design cab; Safety glass for all windows; Shock-less cab suspension by 4-point fluid mounting; Sliding front window w/ auto lock; 10" Full-color LCD monitor display; Membrane switch on monitor display; Switch panel (including throttle dial w/ eco-mode switch); Windshield wiper & washer; AM/FM/Bluetooth Radio w/ hands-free phone; Sectioned floor mat; Polycarbonate roof hatch & Sun shade; Auto air conditioner; Roll-over protective structure (ROPS); Top guard OPG level 1 (in cab structure).

Seat:

Low frequency air suspension w/ air springs and double acting hydraulic damper; Manual weight adjustment; Backrest angle adjustment; Seat height adjustment; Adjustable armrest (Angle and height); Adjustable headrest; Retractable seat belt; Adjustable lumbar support; Console mount on suspension; Control consoles adjust independently of seat.

ATTACHMENT

Boom	20 ft 2 in (6.15 m)
Arm options:	
Standard	10 ft 5 in (3.18 m)
Short	8 ft 8 in (2.65 m)
Long	12 ft 0 in (3.66 m)
Bucket digging force* w/ Auto Power-Boost	39,340 lbf (175 kN) 42,780 lbf (190 kN)

NOTE: *Digging force ratings based on ISO6015.

OPERATING WEIGHT

Operating weight	67,000 lb (30 400 kg)
w/ shoes	2 ft 7 in (800 mm)
w/ boom	20 ft 2 in (6.15 m)
w/ arm	10 ft 5 in (3.18 m)
w/ bucket	1,940 lb (880 kg)
w/ counterweight	10,800 lb (4 900 kg)

NOTE: W/ operator/full fuel/standard equipment.

GROUND PRESSURE

@ Standard operating weight 6.2 psi (0.43 bar)
w/ 31.5 in (800 mm) triple semi-grouser shoes

HYDRAULICS

System design	Open center
Main pumps	Two-variable displacement/ axial piston
Max. rated flow x 2	67.6 gpm (256 L/min) @ 1,900 RPM
System pressures:	
Boom, arm and bucket w/ Power Boost	4,970 psi (343 bar) 5,410 psi (373 bar)
Travel circuits	4,970 psi (343 bar)
Swing circuits	4,410 psi (304 bar)
Pilot pump	1 x gear design
Max. capacity	7.5 gpm (28.5 L/min)
Pilot system working pressure:	570 psi (39 bar, 40 kgf/cm ²)
Control valve w/ boom/arm holding valve: Right track travel, bucket, boom and arm acceleration.	1 x Four-spool section
Left track travel, bucket, boom and arm acceleration.	1 x Five-spool section
Work mode selections	SP – Mode Power – Mode Eco – Mode Lift – Mode
Swing motor	Fixed displacement axial piston
Swing final drive	Planetary gear reduction
Travel motor	Two-speed independent travel/axial piston
Turn table bearing	Ball bearing type w/ internal gear
Swing torque	67,900 lbf-ft (92 100 N-m)

HYDRAULIC CYLINDERS

Boom cylinders	Two (2)
Cylinder bore	5.5 in (140 mm)
Cylinder rod diameter	3.7 in (95 mm)
Cylinder stroke	53.9 in (1 369 mm)
Arm cylinder	One (1)
Cylinder bore	5.9 in (150 mm)
Cylinder rod diameter	4.1 in (105 mm)
Cylinder stroke	65.0 in (1 650 mm)
Bucket cylinder	One (1)
Cylinder bore	5.3 in (135 mm)
Cylinder rod diameter	3.5 in (90 mm)
Cylinder stroke	42.4 in (1 078 mm)

SERVICE CAPACITIES

Fuel tank	126 gal (478 L)
Hydraulic system	83 gal (315 L)
Hydraulic tank	46 gal (173 L)
Engine oil w/ filter	3.9 gal (14.6 L)
Swing drive	1.3 gal (5.0 L)
Final drive	2.5 gal (9.5 L)
DEF tank	22 gal (84 L)

COOLING SYSTEM

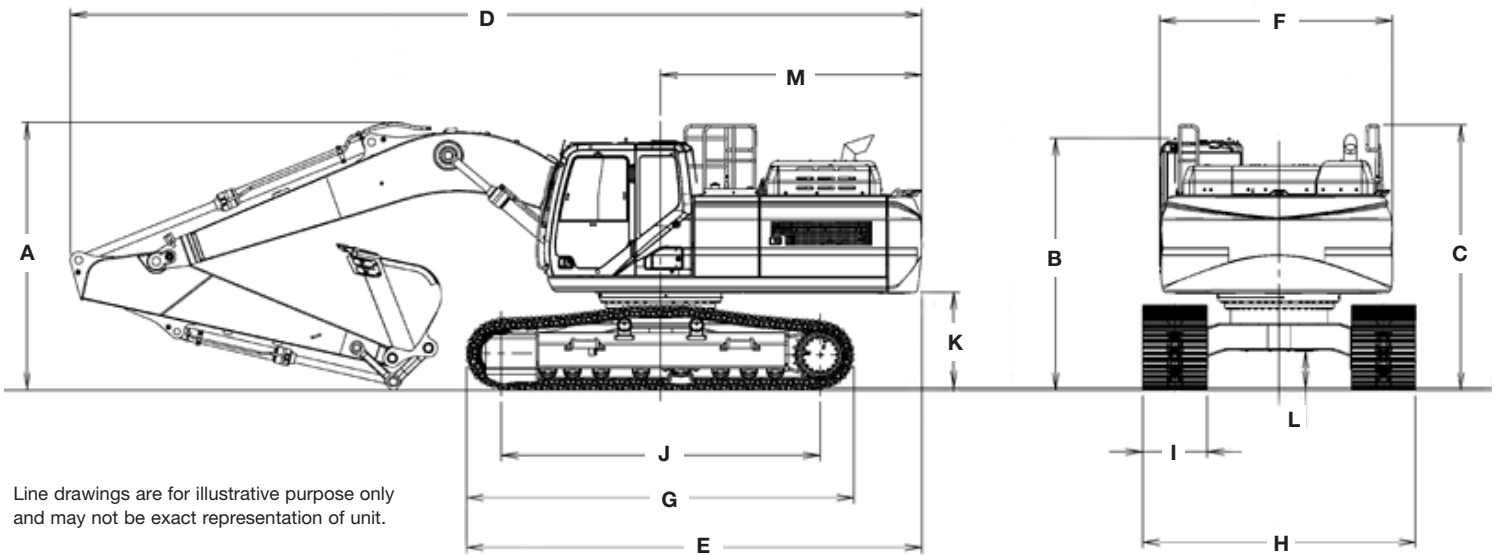
Fan	f 31.9 in (810 mm) with 9-blades
Radiator capacity	63,600 kcal/h (73.9 kW)
Fin type	Corrugated fin (wavy type)
Fin space	0.069 in (1.75 mm)
Long life coolant	Coolant 55%, Water 45%
Oil cooler capacity	47,800 kcal/h (55.6 kW)
Fin type	Corrugated fin (wavy type)
Fin space	0.069 in (1.75 mm)
Intercooler capacity	23,800 kcal/h (27.6 kW)
Fin type	Corrugated fin (wavy type)
Fin space	0.069 in (1.75 mm)
Fuel cooler capacity	1,600 kcal/h (1.9 kW)
Fin type	Corrugated fin (wavy type)
Fin space	0.079 in (2.0 mm)

Filters:

Suction filter	105 microns
Return filter	6 microns
Pilot line filter	8 microns

OTHER SPECIFICATIONS

Swing speed	10 RPM
Swing torque	68,151 lbf-ft (92.4 kN-m)
Swing brake	Mechanical disc
Undercarriage:	
Length	15 ft 11 in (4 850 mm)
Track gauge	8 ft 6 in (2 600 mm)
Carrier rollers	2
Track rollers	8
Shoes – triple grouser	50
Shoe width – std.	2 ft 7 in (800 mm)
Link pitch	8 in (203 mm)
Track:	
Chain	Grease lubricated/strutted
Guides	Single
Adjustment	Hydraulic

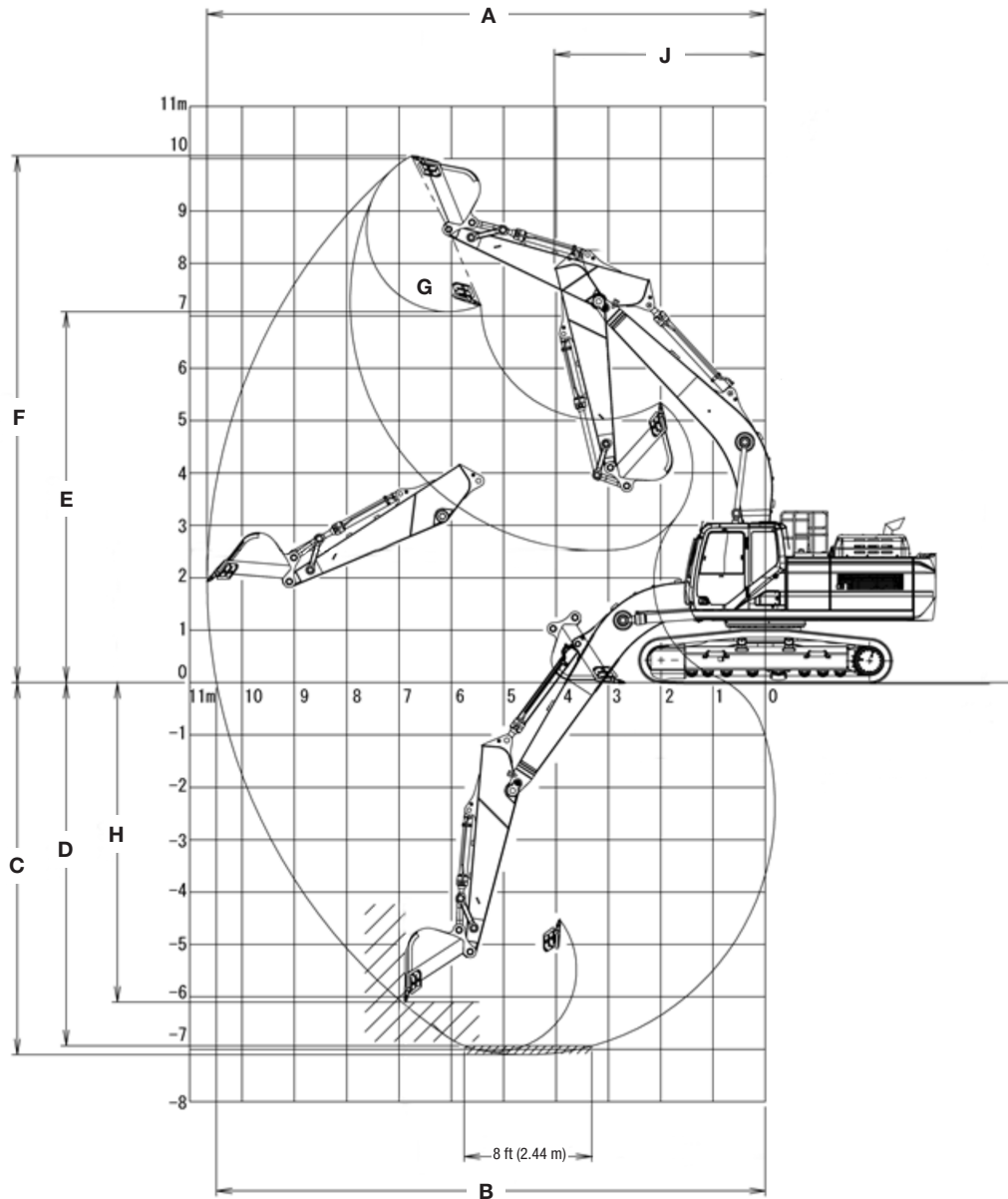


Line drawings are for illustrative purpose only and may not be exact representation of unit.

DIMENSIONS

	10 ft 5 in (3.18 m) Arm	8 ft 8 in (2.65 m) Arm	12 ft 0 in (3.66 m) Arm
A. Overall height – with attachment	10 ft 11 in (3 330 mm)	10 ft 11 in (3 320 mm)	11 ft 3 in (3 420 mm)
B. Cab height	10 ft 3 in (3 130 mm)	10 ft 3 in (3 130 mm)	10 ft 3 in (3 130 mm)
C. Overall height to top of guardrail	10 ft 10 in (3 300 mm)	10 ft 10 in (3 300 mm)	10 ft 10 in (3 300 mm)
D. Overall length – with attachment	34 ft 10 in (10 610 mm)	34 ft 10 in (10 610 mm)	34 ft 10 in (10 610 mm)
E. Overall length – without attachment	18 ft 8 in (5 680 mm)	18 ft 8 in (5 680 mm)	18 ft 8 in (5 680 mm)
F. Width of upper structure	9 ft 6 in (2 900 mm)	9 ft 6 in (2 900 mm)	9 ft 6 in (2 900 mm)
G. Track overall length	15 ft 11 in (4 850 mm)	15 ft 11 in (4 850 mm)	15 ft 11 in (4 850 mm)
H. Track overall width with 31.5 in (800 mm) shoes	11 ft 2 in (3 400 mm)	11 ft 2 in (3 400 mm)	11 ft 2 in (3 400 mm)
I. Track shoe width	2 ft 7 in (800 mm)	2 ft 7 in (800 mm)	2 ft 7 in (800 mm)
J. Center to center – idler to sprocket	13 ft 1 in (3 980 mm)	13 ft 1 in (3 980 mm)	13 ft 1 in (3 980 mm)
K. Upper structure ground clearance	3 ft 11 in (1 190 mm)	3 ft 11 in (1 190 mm)	3 ft 11 in (1 190 mm)
L. Minimum ground clearance	1 ft 6 in (450 mm)	1 ft 6 in (450 mm)	1 ft 6 in (450 mm)
M. Rear tail swing radius	10 ft 10 in (3 290 mm)	10 ft 10 in (3 290 mm)	10 ft 10 in (3 290 mm)
Operating weight*	67,271 lb (30 514 kg)	67,050 lb (30 414 kg)	67,602 lb (30 664 kg)
Ground pressure	6.4 psi (0.44 bar)	6.4 psi (0.44 bar)	6.4 psi (0.44 bar)
Track gauge	8 ft 6 in (2 600 mm)	8 ft 6 in (2 600 mm)	8 ft 6 in (2 600 mm)
Crawler tracks height	3 ft 5 in (1 040 mm)	3 ft 5 in (1 040 mm)	3 ft 5 in (1 040 mm)

NOTE: *Machine equipped with 20 ft 2 in (6.15 m) boom. 31.5 in (800 mm) track shoe, 1,940 lb (880 kg) bucket, 165 lb (75 kg) operator, full fuel and standard equipment.



PERFORMANCE SPECS

	10 ft 5 in (3.18 m) Arm	8 ft 8 in (2.65 m) Arm	12 ft 0 in (3.66 m) Arm
A. Maximum dig radius	35 ft 0 in (10 670 mm)	33 ft 6 in (10 220 mm)	36 ft 7 in (11 160 mm)
B. Dig radius at groundline	34 ft 5 in (10 490 mm)	32 ft 11 in (10 030 mm)	36 ft 0 in (10 980 mm)
C. Maximum dig depth	23 ft 4 in (7 100 mm)	21 ft 7 in (6 570 mm)	24 ft 10 in (7 580 mm)
D. Dig depth – 8 ft 0 in (2.44 m) level bottom	22 ft 9 in (6 940 mm)	21 ft 0 in (6 390 mm)	24 ft 5 in (7 440 mm)
E. Dump height	23 ft 3 in (7 080 mm)	22 ft 9 in (6 930 mm)	24 ft 3 in (7 390 mm)
F. Maximum reach height	29 ft 10 in (9 093 mm)	28 ft 4 in (8 636 mm)	31 ft 5 in (9 576 mm)
G. Bucket rotation	176°	176°	176°
H. Maximum vertical wall dig depth	20 ft 0 in (6 100 mm)	18 ft 10 in (5 750 mm)	22 ft 0 in (6 710 mm)
J. Minimum swing radius	13 ft 3 in (4 030 mm)	13 ft 7 in (3 980 mm)	13 ft 5 in (4 080 mm)
Arm digging force:			
Standard	28,865 lbf (128 kN)	33,047 lbf (147 kN)	25,696 lbf (114 kN)
Power Boost	31,383 lbf (140 kN)	35,947 lbf (160 kN)	27,944 lbf (124 kN)
Bucket digging force:			
Standard	39,342 lbf (175 kN)	39,342 lbf (175 kN)	39,342 lbf (175 kN)
Power Boost	42,781 lbf (190 kN)	42,781 lbf (190 kN)	42,781 lbf (190 kN)
Boom length	20 ft 2 in (6 150 mm)	20 ft 2 in (6 150 mm)	20 ft 2 in (6 150 mm)
Bucket radius	5 ft 2 in (1 570 mm)	5 ft 2 in (1 570 mm)	5 ft 2 in (1 570 mm)

LIFT CAPACITIES

10 ft 5 in (3.18 m) Lift capacities using a 1,786 lb (810 kg) bucket, 11,244 lb (5 100 kg) counterweight.

Load (Lift Point Height)	MINIMUM REACH			0 ft (0 m)		5 ft (1.5 m)		10 ft (3 m)		15 ft (4.5 m)		20 ft (6 m)		25 ft (7.5 m)		MAXIMUM REACH		
	@	END	SIDE	END	SIDE	END	SIDE	END	SIDE	END	SIDE	END	SIDE	END	SIDE	@	END	SIDE
+25 ft (7.5 m)	20 ft 10 in (6.35 m)	17,300 lb* (7 847 kg)*	17,300 lb* (7 847 kg)*													23 ft 2 in (7.06 m)	13,150 lb* (5 965 kg)*	13,150 lb* (5 965 kg)*
+20 ft (6 m)	20 ft 2 in (6.15 m)	17,900 lb* (8 119 kg)*	17,900 lb* (8 119 kg)*											16,500 lb* (7 484 kg)*	13,250 lb (6 010 kg)	26 ft 6 in (8.08 m)	12,550 lb* (5 693 kg)*	12,050 lb (4 466 kg)
+15 ft (4.5 m)	15 ft 11 in (4.85 m)	22,950 lb* (10 410 kg)*	22,950 lb* (10 410 kg)*									20,050 lb* (9 095 kg)*	18,300 lb (8 301 kg)	18,000 lb* (8 165 kg)*	13,000 lb (5 897 kg)	28 ft 6 in (8.69 m)	12,550 lb* (5 693 kg)*	10,500 lb (4 763 kg)
+10 ft (3 m)	11 ft 7 in (3.53 m)	37,550 lb* (17 032 kg)*	37,550 lb* (17 032 kg)*							30,050 lb* (13 630 kg)*	26,550 lb (12 043 kg)	22,900 lb* (10 387 kg)*	17,400 lb (7 893 kg)	18,700 lb (8 482 kg)	12,600 lb (5 715 kg)	29 ft 7 in (9.02 m)	13,000 lb* (5 897 kg)*	9,750 lb (4 423 kg)
+5 ft (1.5 m)	12 ft 1 in (3.68 m)	19,400 lb* (8 800 kg)*	19,400 lb* (8 800 kg)*							35,100 lb* (15 921 kg)*	24,900 lb (11 294 kg)	25,550 lb* (11 589 kg)*	16,600 lb (7 530 kg)	18,250 lb (8 278 kg)	12,150 lb (5 511 kg)	29 ft 10 in (9.09 m)	13,900 lb* (6 305 kg)*	9,450 lb (4 286 kg)
Groundline	10 ft 4 in (3.15 m)	14,650 lb* (6 645 kg)*	14,650 lb* (6 645 kg)*							37,100 lb* (16 828 kg)*	24,050 lb (10 909 kg)	24,950 lb (11 317 kg)	16,050 lb (7 280 kg)	17,900 lb (8 119 kg)	11,850 lb (5 375 kg)	29 ft 2 in (8.89 m)	14,350 lb (6 509 kg)	9,600 lb (4 354 kg)
-5 ft (-1.5 m)	4 ft 11 in (1.5 m)	16,250 lb* (7 371 kg)*	16,250 lb* (7 371 kg)*			16,300 lb* (7 394 kg)*	16,300 lb* (7 394 kg)*	25,650 lb* (11 635 kg)*	25,650 lb* (11 635 kg)*	36,350 lb* (16 488 kg)*	23,800 lb (10 795 kg)	24,650 lb (11 181 kg)	15,750 lb (7 144 kg)	17,700 lb (8 029 kg)	11,650 lb (5 284 kg)	27 ft 7 in (8.41 m)	15,450 lb (7 008 kg)	10,300 lb (4 672 kg)
-10 ft (-3 m)	4 ft 10 in (1.47 m)	28,550 lb* (12 950 kg)*	28,550 lb* (12 950 kg)*			28,800 lb* (13 063 kg)*	28,800 lb* (13 063 kg)*	41,100 lb* (18 643 kg)*	41,100 lb* (18 643 kg)*	33,200 lb* (15 059 kg)*	23,950 lb (10 864 kg)	24,700 lb (11 204 kg)	15,800 lb (7 167 kg)			24 ft 11 in (7.59 m)	17,950 lb (8 142 kg)	11,850 lb (5 375 kg)
-15 ft (-4.5 m)	7 ft 6 in (2.29 m)	41,100 lb* (18 643 kg)*	41,100 lb* (18 643 kg)*					35,400 lb* (16 057 kg)*	35,400 lb* (16 057 kg)*	26,750 lb* (12 134 kg)*	24,450 lb (11 090 kg)	19,450 lb* (8 822 kg)*	16,250 lb (7 371 kg)			20 ft 8 in (6.3 m)	18,350 lb* (8 323 kg)*	15,550 lb (7 053 kg)

8 ft 8 in (2.65 m) Lift capacities using a 1,918 lb (870 kg) bucket, 11,244 lb (5 100 kg) counterweight.

Load (Lift Point Height)	MINIMUM REACH			0 ft (0 m)		5 ft (1.5 m)		10 ft (3 m)		15 ft (4.5 m)		20 ft (6 m)		25 ft (7.5 m)		MAXIMUM REACH		
	@	END	SIDE	END	SIDE	END	SIDE	END	SIDE	END	SIDE	END	SIDE	END	SIDE	@	END	SIDE
+25 ft (7.5 m)	19 ft 1 in (5.82 m)	19,300 lb* (8 754 kg)*	19,300 lb* (8 754 kg)*									19,300 lb* (8 754 kg)*	18,900 lb (8 573 kg)			21 ft 2 in (6.45 m)	17,150 lb* (7 779 kg)*	17,150 lb* (7 779 kg)*
+20 ft (6 m)	18 ft 3 in (5.56 m)	20,150 lb* (9 140 kg)*	20,150 lb* (9 140 kg)*									19,550 lb* (8 868 kg)*	18,750 lb (8 505 kg)			24 ft 9 in (7.53 m)	16,250 lb* (7 371 kg)*	13,300 lb (6 033 kg)*
+15 ft (4.5 m)	10 ft 8 in (3.25 m)	36,050 lb* (16 352 kg)*	36,050 lb* (16 352 kg)*							26,400 lb* (11 975 kg)*	26,400 lb* (11 975 kg)*	21,500 lb* (9 752 kg)*	18,100 lb (8 210 kg)	19,100 lb (8 664 kg)	12,950 lb (5 874 kg)	27 ft 0 in (8.23 m)	16,150 lb* (7 326 kg)*	11,450 lb (5 194 kg)
+10 ft (3 m)	13 ft 5 in (4.09 m)	37,300 lb* (16 919 kg)*	30,900 lb (14 016 kg)							32,400 lb* (14 696 kg)*	26,150 lb (11 861 kg)	24,200 lb* (10 977 kg)*	17,300 lb (7 847 kg)	18,700 lb (8 482 kg)	12,600 lb (5 715 kg)	28 ft 1 in (8.56 m)	15,600 lb (7 076 kg)	10,550 lb (4 785 kg)
+5 ft (1.5 m)	13 ft 10 in (4.22 m)	26,350 lb* (11 952 kg)*	26,350 lb* (11 952 kg)*							36,600 lb* (16 601 kg)*	24,750 lb (11 226 kg)	25,550 lb (11 589 kg)	16,600 lb (7 530 kg)	18,300 lb (8 301 kg)	12,200 lb (5 534 kg)	28 ft 4 in (8.64 m)	15,250 lb (6 917 kg)	10,250 lb (4 649 kg)
Groundline	12 ft 4 in (3.76 m)	20,150 lb* (9 140 kg)*	20,150 lb* (9 140 kg)*							37,400 lb* (16 964 kg)*	24,150 lb (10 954 kg)	25,000 lb (11 340 kg)	16,150 lb (7 326 kg)	18,000 lb (8 165 kg)	11,950 lb (5 420 kg)	27 ft 8 in (8.43 m)	15,650 lb (7 099 kg)	10,450 lb (4 740 kg)
-5 ft (-1.5 m)	7 ft 8 in (2.34 m)	18,800 lb* (8 528 kg)*	18,800 lb* (8 528 kg)*					25,750 lb* (11 680 kg)*	25,750 lb* (11 680 kg)*	35,650 lb* (16 171 kg)*	24,100 lb (10 932 kg)	24,850 lb (11 272 kg)	16,000 lb (7 257 kg)	17,950 lb (8 142 kg)	11,900 lb (5 398 kg)	26 ft 0 in (7.92 m)	17,050 lb (7 734 kg)	11,350 lb (5 148 kg)
-10 ft (-3 m)	6 ft 7 in (2.01 m)	35,500 lb* (16 103 kg)*	35,500 lb* (16 103 kg)*					41,050 lb* (18 620 kg)*	41,050 lb* (18 620 kg)*	31,500 lb* (14 288 kg)*	24,350 lb (11 045 kg)	24,000 lb* (10 886 kg)*	16,100 lb (7 303 kg)			23 ft 1 in (7.04 m)	19,600 lb* (8 890 kg)*	13,400 lb (6 078 kg)
-15 ft (-4.5 m)	10 ft 3 in (3.12 m)	29,550 lb* (13 404 kg)*	29,550 lb* (13 404 kg)*							23,400 lb* (10 614 kg)*	23,400 lb* (10 614 kg)*					18 ft 5 in (5.61 m)	18,100 lb* (8 210 kg)*	18,100 lb* (8 210 kg)*

NOTE: *Following number indicates hydraulic capacity.

LIFT CAPACITIES

12 ft 0 in (3.66 m) Lift capacities using a 1,742 lb (790 kg) bucket, 11,244 lb (5 100 kg) counterweight.

Load (Lift Point Height)	MINIMUM REACH			0 ft (0 m)		5 ft (1.5 m)		10 ft (3 m)		15 ft (4.5 m)		20 ft (6 m)		25 ft (7.5 m)		30 ft (9 m)		MAXIMUM REACH		
	@	END	SIDE	END	SIDE	END	SIDE	END	SIDE	END	SIDE	END	SIDE	END	SIDE	END	SIDE	@	END	SIDE
+25 ft (7.5 m)	22 ft 5 in (6.82 m)	14,700 lb* (6 668 kg)*	14,700 lb* (6 668 kg)*											11,000 lb* (4 990 kg)*	11,000 lb* (4 990 kg)*			25 ft 2 in (7.67 m)	10,550 lb* (4 785 kg)*	10,550 lb* (4 785 kg)*
+20 ft (6 m)	21 ft 10 in (6.65 m)	16,200 lb* (7 348 kg)*	16,200 lb* (7 348 kg)*											15,400 lb* (6 985 kg)*	13,350 lb (6 055 kg)			28 ft 3 in (8.61 m)	10,100 lb* (4 581 kg)*	10,100 lb* (4 581 kg)*
+15 ft (4.5 m)	18 ft 7 in (5.66 m)	19,300 lb* (8 754 kg)*	19,300 lb* (8 754 kg)*									18,600 lb* (8 437 kg)*	18,450 lb (8 369 kg)	16,900 lb* (7 666 kg)*	13,050 lb (5 919 kg)	10,750 lb* (4 876 kg)*	9,700 lb (4 400 kg)	30 ft 2 in (9.19 m)	10,000 lb* (4 536 kg)*	9,550 lb (4 332 kg)
+10 ft (3 m)	10 ft 3 in (3.12 m)	39,300 lb* (17 826 kg)*	39,300 lb* (17 826 kg)*							27,800 lb* (12 610 kg)*	26,950 lb (12 224 kg)	21,550 lb* (9 775 kg)*	17,500 lb (7 938 kg)	18,400 lb* (8 346 kg)*	12,550 lb (5 693 kg)	14,100 lb (6 396 kg)	9,500 lb (4 309 kg)	31 ft 3 in (9.53 m)	10,300 lb* (4 672 kg)*	8,900 lb (4 037 kg)
+5 ft (1.5 m)	10 ft 10 in (3.3 m)	15,750 lb* (7 144 kg)*	15,750 lb* (7 144 kg)*							33,450 lb* (15 173 kg)*	25,050 lb (11 362 kg)	24,500 lb* (11 113 kg)*	16,600 lb (7 530 kg)	18,200 lb (8 255 kg)	12,100 lb (5 488 kg)	13,850 lb (6 282 kg)	9,250 lb (4 196 kg)	31 ft 5 in (9.58 m)	10,900 lb* (4 944 kg)*	8,650 lb (3 924 kg)
Groundline	8 ft 9 in (2.67 m)	11,150 lb* (5 058 kg)*	11,150 lb* (5 058 kg)*					15,050 lb* (6 827 kg)*	15,050 lb* (6 827 kg)*	36,400 lb* (16 511 kg)*	23,950 lb (10 864 kg)	24,850 lb (11 272 kg)	15,950 lb (7 235 kg)	17,750 lb (8 051 kg)	11,700 lb (5 307 kg)	13,650 lb (6 192 kg)	9,050 lb (4 105 kg)	30 ft 10 in (9.4 m)	11,950 lb* (5 420 kg)*	8,750 lb (3 969 kg)
-5 ft (-1.5 m)	3 ft 4 in (1.02 m)	14,000 lb* (6 350 kg)*	14,000 lb* (6 350 kg)*			14,800 lb* (6 713 kg)*	14,800 lb* (6 713 kg)*	23,900 lb* (10 841 kg)*	23,900 lb* (10 841 kg)*	36,550 lb* (16 579 kg)*	23,550 lb (10 682 kg)	24,450 lb (11 090 kg)	15,550 lb (7 053 kg)	17,500 lb (7 938 kg)	11,450 lb (5 194 kg)			29 ft 4 in (8.94 m)	13,750 lb* (6 237 kg)*	9,300 lb (4 218 kg)
-10 ft (-3 m)	3 ft 2 in (0.97 m)	23,200 lb* (10 523 kg)*	23,200 lb* (10 523 kg)*			24,750 lb* (11 226 kg)*	24,750 lb* (11 226 kg)*	36,000 lb* (16 329 kg)*	36,000 lb* (16 329 kg)*	34,250 lb* (15 536 kg)*	23,550 lb (10 682 kg)	24,350 lb (11 045 kg)	15,500 lb (7 031 kg)	17,550 lb (7 961 kg)	11,500 lb (5 216 kg)			26 ft 9 in (8.15 m)	15,950 lb (7 235 kg)	10,550 lb (4 785 kg)
-15 ft (-4.5 m)	5 ft 5 in (1.65 m)	38,050 lb* (17 259 kg)*	38,050 lb* (17 259 kg)*					39,650 lb* (17 985 kg)*	39,650 lb* (17 985 kg)*	29,050 lb* (13 177 kg)*	23,950 lb (10 864 kg)	21,650 lb* (9 820 kg)*	15,800 lb (7 167 kg)					22 ft 11 in (6.99 m)	17,500 lb* (7 938 kg)*	13,200 lb (5 987 kg)

NOTE: *Following number indicates hydraulic capacity.

SYSTEM FLUID CAPACITIES AND SPECIFICATIONS

	Capacities	Specifications
Hydraulic system	83 gal (315 L)	ISO VG 46
Hydraulic sump tank	46 gal (173 L)	ISO VG 46
Fuel tank	126 gal (478 L)	Light oil (Diesel)
Cooling system	10.4 gal (39.4 L)	Coolant 55%, Water 45%
Final drive case – per side	2.5 gal (9.5 L)	API GL-4 90
Swing drive case	1.3 gal (5.0 L)	API GL-5 90
Engine crank case – with Remote Oil Filter	3.9 gal (14.6 L)	API CK-4 SAE 10W-40
Urea water tank	22 gal (84 L)	ISO 22241

STANDARD EQUIPMENT

ENGINE

FPT NEF6
Tier 4 Final/Stage V Certified
Diesel Oxidation Catalyst – DOC
Six-cylinder turbo-charged diesel
Fixed geometry turbocharger
High pressure common rail system - electronic
Neutral safety start
Auto-engine warm up
Air intake heater
Fuel Economy Assist System – FEA
Engine Protection Feature – EPF
Dual-stage fuel filtration
Dual element air filter
Remote oil filter
Drain for fuel tank
1,000-hour engine oil/filter interval
24-volt system
Engine oil sample port
Battery disconnect switch
High ambient temperature cooling package
Emergency engine stop
External Fuel and DEF gauges
Fan housing
Fuel cooler
Fuel filter restriction indicator
Fuel shut-off valve
Radiator, oil cooler, intercooler – protective chaff screen
Air pre-cleaner – Cyclone

FUEL ECONOMY SYSTEMS

Engine Idle/Fuel Economy System:
Auto-idle
One-touch idle
Timed engine shut down
BEC – Boom Economy Control
AEC – Auto Economy Control
SWC – Swing Relief Control
SSC – Spool Stroke Control

HYDRAULIC CONTROLS

Boom/Arm/Bucket/Swing:
Pilot pressure control system (ISO control pattern)
Work mode select:
1 SP – mode
2 Power – mode
3 Eco – mode
4 Lift – mode
Travel mode select – 2-speed travel with auto downshift
Attachment cushion control
Hydraulic lock – gate lock, left side tilt console
Custom flow balance adjustment:
Arm in vs. boom up
Arm in vs. swing
Multi-function with electronic pressure and flow control/joystick activated with electronic configurable controls

UPPER STRUCTURE

ISO mirrors – 3
Cab ISO-Mounts – fluid and spring
Upper mounted work light – 70 watt
Swivel guard belly pan
Center cover – over main CV
Fuel tank belly pan
Handrail – RH access
ISO guard rails
Lifting eyes for counterweight
Lockable fuel cap, service doors and toolbox

ATTACHMENTS

Boom – 20 ft 2 in (6.15 m)
Arm – 10 ft 5 in (3.18 m)
Heavy-duty bucket linkage
Boom mounted work light – 70 watt
Auxiliary pipe brackets
Centralized grease fittings
Attachment cushion valve
Arm and boom regeneration
Bucket anti-clatter device
Chrome pins
Easy Maintenance System (EMS) bushings
Teardrop pin retention keepers

OPERATOR ENVIRONMENT

Operators cab:
Smooth and round shape design cab, fabricated by press work
Safety glass for all windows
Shock-less cab suspension by 4-point fluid mounting
Sliding front window with auto lock
10 in Full-color LCD monitor display
Membrane switch on monitor display with 5 configurable button on bottom of monitor
Switch panel – including throttle dial with eco-mode switch
Windshield wiper & washer
AM/FM/Bluetooth Radio with hands-free phone
Sectioned floor mat
Polycarbonate roof hatch & Sun shade
Auto climate control
Roll-over protective structure – ROPS
Top guard OPG level 1 – in cab structure
Operator's seat:
Low frequency air suspension with air springs and double acting hydraulic damper.
With following features:
Manual weight adjustment
Backrest angle adjustment
Seat height adjustment
Adjustable armrest – Angle and height
Adjustable headrest
Retractable seat belt
Adjustable lumbar support
Console mount on suspension
Control consoles adjust independently of seat
Others:
Rear view mirror – Cab side & Right side
Rear & Right-side view Camera

UNDERCARRIAGE

Long undercarriage
31.5 in (800 mm) steel shoes, triple semi-grouser
Full overlap turntable bearing tub
Single track chain guides
Hydraulic track adjustment
Sealed link chain
Steps
Carbody belly pan – swivel guard
X-pattern carbody
Lashing points – tie downs
Extra Filter Kit:
Engine oil filter
Filter wrench
Fuel filters
Grease gun
Green plug oil drain hose for engine oil drain
Hydraulic return filter
Pilot circuit hydraulic filter

TELEMATICS

CASE SiteWatch™ Telematics – includes hardware and a 3-yr Advanced data subscription for 2-way communication

MASS

Operating mass 67,000 lb (30 400 kg)
with 10 ft 5 in (3.18 m) Arm, 1.1 m³
Sumitomo Bucket, 800 mm grouser shoe, operator, lubricant, coolant, full fuel tank
Shipping mass 66,200 lb (30 000 kg)
Operating mass – (operator mass (75 kg) + full fuel mass + bucket mass (880 kg) + shipping fuel mass
Counterweight mass 10,800 lb (4 900 kg)
Ground pressure 6.24 psi (0.043 MPa)
with 10 ft 5 in (3.18 m) Arm, 1.1 m³
Sumitomo Bucket, 800 mm grouser shoe

ELECTRICAL SYSTEM

Engine control:
Dial type throttle control
One touch idle/Auto deceleration/timed engine shutdown system
Emergency stop
Monitor system:
Message display – Caution, condition, etc.
Work mode display – SP, Power, Eco, Lift
Machine condition – Power boost, etc.
Alarm display and buzzer
Water temperature
Hydraulic oil temperature
Fuel level
Diagnosis system
Rear & Right-side view camera image
Urea water level
Wire harness
Travel alarm
Double horn
Battery
Lights
Working light
Upper 24 V 70 W x1
Boom 24 V 70 W x1
Cab 24 V 70 W x1
Operator's cab room 24 V 10 W x1

OPTIONAL EQUIPMENT

ENGINE

Refueling pump
Air pre-cleaner – Cyclone
High ambient temperature cooling package

HYDRAULICS

Auxiliary hydraulics:
Proportionally controlled secondary
low-flow auxiliary hydraulics
Hose Burst Check Valve – HBCV

MACHINE CONTROL

Leica iCON iXE2 – 2D System
Leica iCON iXE3 – 3D System

ATTACHMENTS

Heavy-duty arm – 8 ft 8 in (2.65 m)
Long arm – 12 ft 0 in (3.66 m)
Quick coupler/Case multi-pin grabber
Tools:
Heavy-duty/Extreme-duty/Ditching
Buckets; Hammers; Thumbs;
Compaction plates.

UPPER STRUCTURE

Rubber bumper guard – order through
Service Parts

UNDERCARRIAGE

23.6 in (600 mm) steel shoes,
triple semi-grouser
27.6 in (700 mm) steel shoes,
triple semi-grouser
Track guides – triple

OPERATOR ENVIRONMENT

FOPS cab top guard – Level 2
Front grill guard – 2 x 2 in (50.8 x 50.8 mm)
screen mesh
Front rock guard – vertical bars
Two piece/OPG 1
Front rock guard – vertical bars
One piece/OPG 2
Vandal guard (front window) with
common key
Rain deflector – not available with
Front guards
Sun visor
Max View Monitor – 3 cameras with
270-degree view
LED Package:
Includes 1 6 LED Lights – 2 front cab
mounted, 2 rear mounted and 1 mounted
on each side

CaseCE.com

©2022 CNH Industrial America LLC. All rights reserved. CASE is a trademark registered in the United States and many other countries, owned by or licensed to CNH Industrial N.V., its subsidiaries or affiliates. CNH Industrial Capital is a trademark in the United States and many other countries, owned by or licensed to CNH Industrial N.V., its subsidiaries or affiliates. Printed in U.S.A. Contains 10% post-consumer fiber.

IMPORTANT: CASE Construction Equipment Inc. reserves the right to change these specifications without notice and without incurring any obligation relating to such change. Availability of some models and equipment builds vary according to the country in which the equipment is used. The illustrations and text may include optional equipment and accessories and may not include all standard equipment. Your CASE dealer/distributor will be able to give you details of the products and their specifications available in your area.



CASE Construction Equipment is biodiesel-friendly. NOTE: All engines meet current EPA emissions regulations. All specifications are stated in accordance with SAE Standards or Recommended Practices, where applicable.



Always read the Operator's Manual before operating any equipment. Inspect equipment before using it, and be sure it is operating properly. Follow the product safety signs and use any safety features provided.

Form No. CCE202209CX300E
Replaces Form No. CCE202203CX300E

CX300E

7 of 7