

**C-SERIES HYDRAULIC EXCAVATORS**  
**CX300C / CX350C / CX370C**

**CASE**  
CONSTRUCTION



**QUALITY**  
**YOU CAN TRUST**

[www.casece.com](http://www.casece.com)

**EXPERTS FOR THE REAL WORLD**  
**SINCE 1842**

# MAIN REASONS



## HIGH EFFICIENCY

Up to 8% more fuel efficiency.  
Constant consumption monitoring.  
With 5 Energy Saving Controls, Isuzu Tier III engine and the new ECO gauge function.



## HIGH RELIABILITY

Robust design.  
Increased durability.  
Lower cost of ownership.  
CASE top Manufacturing quality  
Heavy duty Arm/Boom options.



## COMFORT AND SAFETY

Spacious and safe cab.  
Low noise and vibrations.  
Ergonomic workstation.  
Real time parameters monitoring.  
Fully adjustable seat/joysticks and brand new LED cluster.



## HIGH PRECISION AND CONTROLLABILITY

High performance, smooth control and fuel saving with CASE Intelligent Hydraulic System.



# TO CHOOSE THE NEW C-SERIES



## OUTSTANDING VISIBILITY

Safe and fast operations.

Increased comfort with wider glazed areas and rear/ side cameras.



## FAST CYCLES

Higher breakout force.

Continuous operations.

Up to 10% higher digging capability.

With H/SP modes and

Auto Power boost.



## HIGH VERSATILITY

The perfect machine for every application.

With 3 available power modes and 10 auxiliary hydraulic settings.



## LOW TOTAL COST OF OWNERSHIP

Longer service intervals.Reduced downtimes.

Fast, easy and safe maintenance operations.

With the EMS bushings, high quality components and service points accessible from the ground.

# C - SERIES

## RELIABLE ENGINE

The C Series Excavators is powered by **Tier III Isuzu engines**, designed to boost machine performances and optimize fuel economy.

Fuel consumption can be constantly monitored by the operator throughout the **new ECO gauge function**, that displays in real time the energy saving level utilized.

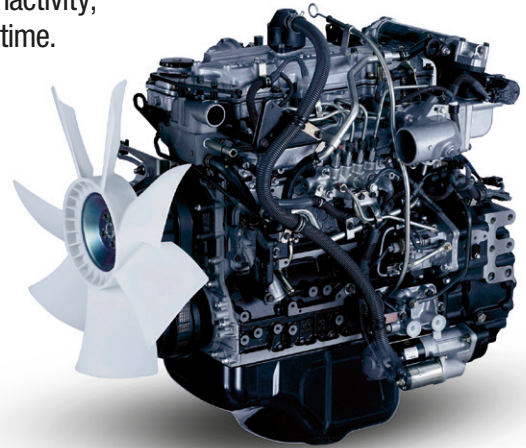
- **Auto Idle:** lowers engine rpm after 5 seconds of lever inactivity;
- **Idle Shutdown:** shuts the engine down after a pre-set time.



## HIGH RELIABILITY

Improved design and performance

- Monoboom is Heavy Duty as standard **to ensure the best durability in every working conditions.**
- New high strength casting parts with joined hinge flanges **reduce stress on components.**
- The 'sloped' lower frame design reduces the time needed to clean the undercarriage.



**Accurate, simple and robust design for high durability**

- The C Series Excavators deliver leading design solutions and manufacturing quality.
- Boom and arm feature forged brackets and **reduced tolerances for increased component life minimizing downtime.**
- The anti-friction resin shims in the boom foot and head reduce noise and free play, **increasing durability and reliability for the customer.**
- New synthetic hydraulic filter reduces system contamination, **cutting service costs and boosting machine longevity.**



## FAST CYCLES

The advanced hydraulic system offers higher breakout forces, improved swing speeds and greater swing torque, resulting in faster cycle times and 5% increase in productivity.

Power boost function is automatically engaged. The electronic management of speed and power lowers fuel consumption and offers considerable productivity benefits in terms of outputs.



## HIGH EFFICIENCY

CASE advanced energy management consists of 5 Energy Saving Controls:

- **Torque Control:** electronic control of the hydraulic oil flow to prevent engine overloads.
- **Boom Economy Control (BEC):** increased fuel efficiency in boom lowering/swinging operations.
- **Swing Relief Control (SWC):** optimized hydraulic power distribution in slewing operations to deliver the most efficient flow and pressure.
- **Spool Stroke Control (SSC):** automatic pressure adjustment during digging and leveling operations

Idle functions

- **Auto Idle:** lowers engine rpm after 5 seconds of joystick inactivity;
- **Idle Shutdown:** shuts the engine down after a pre-set time.

# CRAWLER EXCAVATORS



## HIGH VERSATILITY

3 power modes to choose from:

- A** AUTO: for normal digging, grading, lifting and precision work.
- H** HEAVY: for heavy operations always granting the best balance between productivity and fuel economy.
- SP** SUPER POWER: extra speed and power for the most demanding jobs that require maximum productivity.

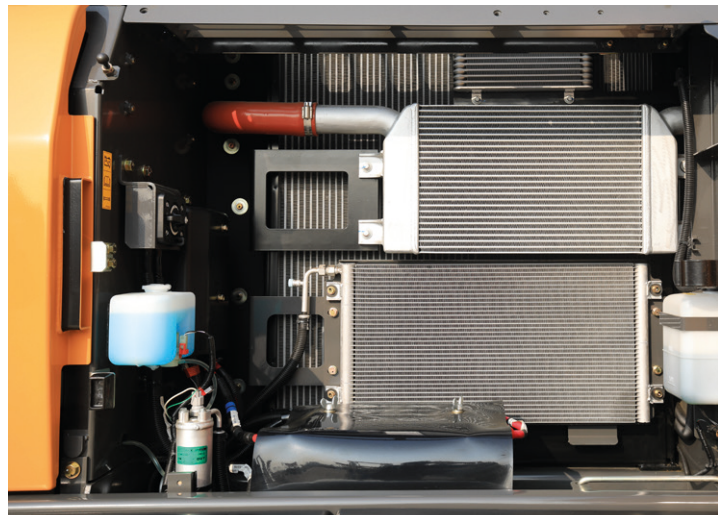


Operators can store up to **10 auxiliary hydraulic flow settings** (and pressures as optional) to easily switch among different attachments with no need of any mechanical adjustment.



## LOW TOTAL COST OF OWNERSHIP

- The *Extended Maintenance Bushings (EMS)* provide longer greasing intervals, **reducing daily and weekly maintenance for the operator.**
- All filters and regular check points are grouped and easily accessible from the ground.
- Radiator and coolers are mounted side by side for more efficient cooling and easy access for cleaning.
- Optional refueling pump with auto cut off reduces downtime for regular fills.



# C - SERIES



## COMFORT AND SAFETY

- Superior wide and roomy cab with ample legroom.
- New cushioning system to lower noise and vibration levels for the operator's ultimate comfort.
- Totally adjustable workstation with fully reclinable air –suspended seat as option.
- Air conditioning system with 25% more airflow and 6% better performances compared to B-Series.



## OUTSTANDING VISIBILITY

- Wider glazed surface with single piece side window.
- New 7" LED cluster for a more secure and safe working environment and to constant monitor the main machine parameters.





# C- SERIES

## CX300C

### ENGINE

Model \_\_\_\_\_ ISUZU GH-6HK1X  
Type \_\_\_\_\_ Water-cooled, 4-cycle diesel, 6-cylinder in line,  
high pressure common rail system, turbocharger, air cooled intercooler  
Number of cylinders/displacement \_\_\_\_\_ 6 / 7790 cc  
Bore/Stroke \_\_\_\_\_ 115 x 125 mm  
Rated flywheel horse power \_\_\_\_\_  
Horsepower ISO 9249 NET \_\_\_\_\_ 202 kW at 2000 min<sup>-1</sup>  
Horsepower ISO 14396 GROSS \_\_\_\_\_ 212 kW at 2000 min<sup>-1</sup>  
Maximum torque ISO 9249 NET \_\_\_\_\_ 989 Nm at 1500 min<sup>-1</sup>  
Maximum torque ISO 14396 GROSS \_\_\_\_\_ 1020 Nm at 1500 min<sup>-1</sup>

### HYDRAULIC SYSTEM

Type \_\_\_\_\_ 2 variable displacement axial piston pumps with regulating system  
Max. oil flow \_\_\_\_\_ 2 X 270 l/min at 2000 min<sup>-1</sup>  
Working circuit pressure \_\_\_\_\_  
Boom/Arm/Bucket circuit \_\_\_\_\_ 34.3 MPa  
Boom/Arm/Bucket circuit (with auto power up) \_\_\_\_\_ 37.3 MPa  
Swing circuit \_\_\_\_\_ 30.4 MPa  
Travel circuit \_\_\_\_\_ 34.3 Mpa

### SWING

Maximum swing speed \_\_\_\_\_ 11 min<sup>-1</sup>  
Swing torque \_\_\_\_\_ 92,100 Nm

### HYDRAULIC FILTERS

Suction filter \_\_\_\_\_ 105 µm  
Return filter \_\_\_\_\_ 6 µm  
Pilot line filter \_\_\_\_\_ 8 µm

### TRAVEL

Travel motor \_\_\_\_\_ Variable displacement axial piston motor  
Max travel speed \_\_\_\_\_ 5.7 km/h  
Low travel speed \_\_\_\_\_ 3.3 km/h  
Gradeability \_\_\_\_\_ 70% (35°)  
Drawbar pull \_\_\_\_\_ 233 kN

### ELECTRICAL SYSTEM

Circuit \_\_\_\_\_ 24 V  
Alternator \_\_\_\_\_ 50 Amp  
Starter motor \_\_\_\_\_ 5.0 kW  
Battery \_\_\_\_\_ 2 × 12 V 128 Ah/5 HR

### UNDERCARRIAGE

Number of carriers rollers (each side) \_\_\_\_\_ 2  
Number of track rollers (each side) \_\_\_\_\_ 9  
Number of shoes (each side) \_\_\_\_\_ 50  
Type of shoe \_\_\_\_\_ Triple grouser shoe

### CAPACITIES

Fuel tank \_\_\_\_\_ 450 lt  
Hydraulic system \_\_\_\_\_ 300 l  
Cooling system \_\_\_\_\_ 32,7 l  
Engine crank Case \_\_\_\_\_ 41 l

### WEIGHT

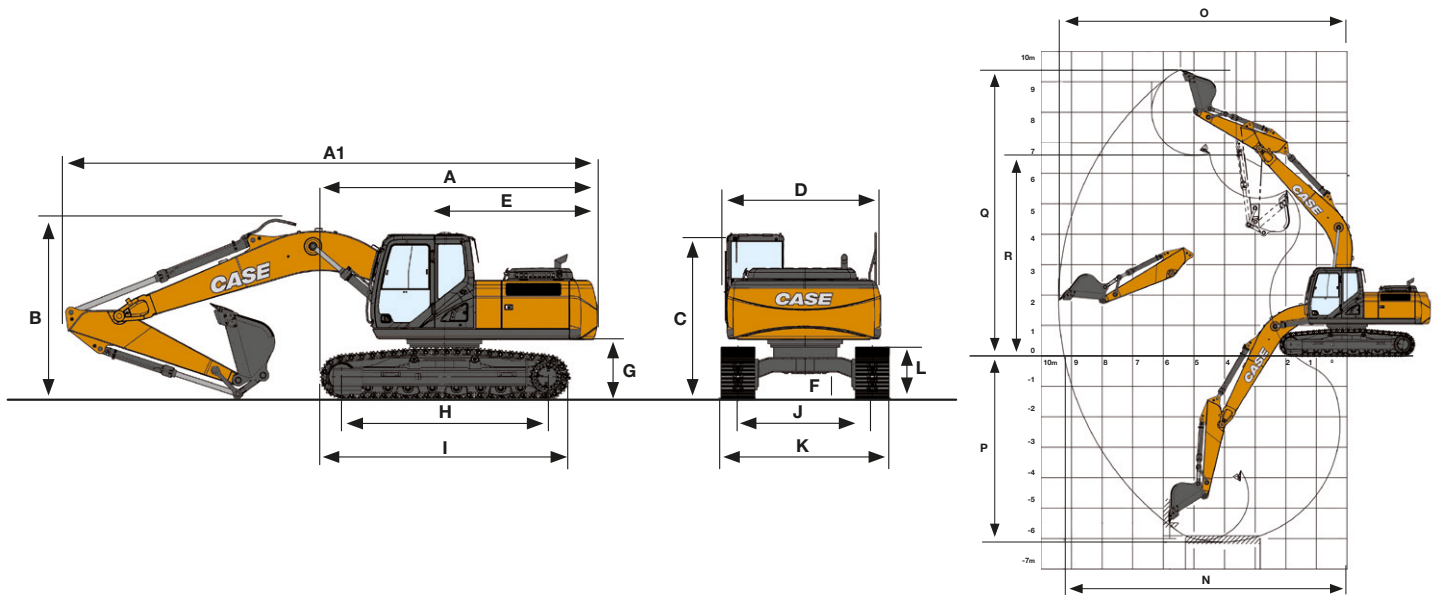
With 3.18 m Arm, 1.3 m<sup>3</sup> Bucket, 600mm grouser shoe,  
operator, lubricant, coolant and full fuel tank

Weight	29.400 kg
Ground Pressure	0.056 Mpa
Counterweight	5.300 kg



# CRAWLER EXCAVATORS

## GENERAL DIMENSIONS



			Arm 2.65	Arm 3.18 m	Arm 3.66 m
<b>CX300C</b>					
A	Overall length (without attachment)	mm	5580	5580	5580
A1	Overall length (with attachment)	mm	10480	10450	10470
B	Overall height (with attachment)	mm	3340	3260	3460
C	Cab height	mm	3090	3090	3090
D	Upper structure overall width	mm	2890	2890	2890
E	Swing (rear end radius)	mm	3160	3160	3160
F	Minimum ground clearance	mm	470	470	470
G	Clearance height under upper structure	mm	1180	1180	1180
H	Wheel base (Center to center of wheels)	mm	3980	3980	3980
I	Crawler overall length	mm	4850	4850	4850
L	Crawler tracks height	mm	1040	1040	1040
J	Track gauge	mm	2600	2600	2600
K	Undercarriage overall width (with 600 mm shoes)	mm	3200	3200	3200

## PERFORMANCE DATA

			Arm 2.65 m	Arm 3.18 m	Arm 3.66 m
Boom length	mm		6150	6150	6150
Bucket radius	mm		1570	1570	1570
Bucket wrist action	°		176	176	176
N	Maximum reach at GRP	mm	10040	10500	10990
O	Maximum reach	mm	10220	10670	11160
P	Max. digging depth	mm	6570	7100	7580
Q	Max. digging height	mm	9930	10060	10390
R	Max. dumping height	mm	6940	7090	7390
	Arm digging force with auto power up	kN	153	132	119
	Bucket digging force with auto power up	kN	190	190	190

# C- SERIES

## CX350C / CX370C

### ENGINE

Model \_\_\_\_\_ ISUZU GH-6HK1X  
Type \_\_\_\_\_ Water-cooled, 4-cycle diesel, 6-cylinder in line,  
high pressure common rail system, turbocharger, air cooled intercooler  
Number of cylinders/displacement \_\_\_\_\_ 6 / 7790 cc  
Bore/Stroke \_\_\_\_\_ 115 x 125 mm  
Rated flywheel horse power \_\_\_\_\_  
Horsepower ISO 9249 NET \_\_\_\_\_ 200 kW at 2000 min<sup>-1</sup>  
Horsepower ISO 14396 GROSS \_\_\_\_\_ 212 kW at 2000 min<sup>-1</sup>  
Maximum torque ISO 9249 NET \_\_\_\_\_ 983 Nm at 1500 min<sup>-1</sup>  
Maximum torque ISO 14396 GROSS \_\_\_\_\_ 1020 Nm at 1500 min<sup>-1</sup>

### HYDRAULIC SYSTEM

Type \_\_\_\_\_ 2 variable displacement axial piston pumps with regulating system  
Max. oil flow \_\_\_\_\_ 2 X 300 l/min at 2000 min<sup>-1</sup>  
Working circuit pressure \_\_\_\_\_  
Boom/Arm/Bucket circuit \_\_\_\_\_ 34.3 MPa  
Boom/Arm/Bucket circuit (with auto power up) \_\_\_\_\_ 37.3 MPa  
Swing circuit \_\_\_\_\_ 30.4 MPa  
Travel circuit \_\_\_\_\_ 34.3 Mpa

### SWING

Maximum swing speed \_\_\_\_\_ 10 min<sup>-1</sup>  
Swing torque \_\_\_\_\_ 112000 Nm

### HYDRAULIC FILTERS

Suction filter \_\_\_\_\_ 105 µm  
Return filter \_\_\_\_\_ 6 µm  
Pilot line filter \_\_\_\_\_ 8 µm

### TRAVEL

Travel motor \_\_\_\_\_ Variable displacement axial piston motor  
Max travel speed \_\_\_\_\_ 5.4 km/h  
Low travel speed \_\_\_\_\_ 3.4 km/h  
Gradeability \_\_\_\_\_ 70% (35°)  
Drawbar pull \_\_\_\_\_ 264 kN

### ELECTRICAL SYSTEM

Circuit \_\_\_\_\_ 24 V  
Alternator \_\_\_\_\_ 50 Amp  
Starter motor \_\_\_\_\_ 5.0 kW  
Battery \_\_\_\_\_ 2 × 12 V 128 Ah/5 HR

### UNDERCARRIAGE

Number of carriers rollers (each side) \_\_\_\_\_ 2  
Number of track rollers (each side) \_\_\_\_\_ 8 (long crawler)  
Number of shoes (each side) \_\_\_\_\_ 48 (long crawler)  
Type of shoe \_\_\_\_\_ Triple grouser shoe

### CAPACITIES

Fuel tank \_\_\_\_\_ 580 lt  
Hydraulic system \_\_\_\_\_ 350 l  
Cooling system \_\_\_\_\_ 32,9 l  
Engine crank Case \_\_\_\_\_ 41 l

### WEIGHT

CX350C with 3.25m Standard arm and Standard boom,  
1.4 m<sup>3</sup> Bucket, 600mm triple grouser shoes, double track  
guide, operator, lubricant, coolant and full fuel tank

#### CX350C

Weight (LC)	35.600 kg
Ground Pressure (LC)	0.066 Mpa
Counterweight	7.400 kg

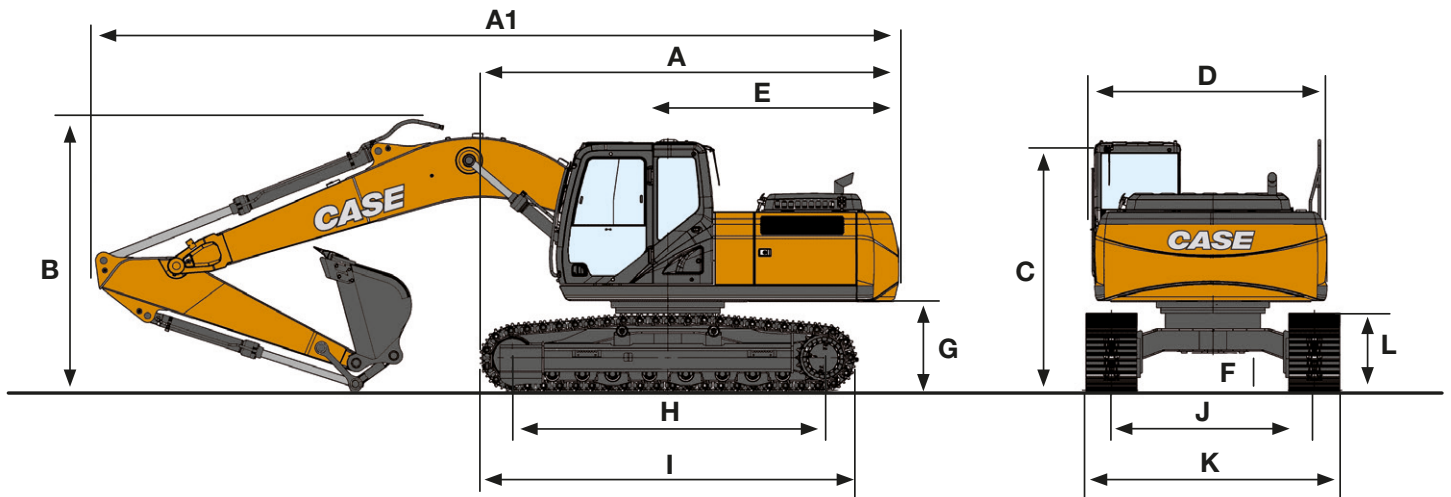
CX370C with 3.25m Heavy duty arm and Heavy duty  
boom, 1.6 m<sup>3</sup> Bucket, 600mm triple grouser shoes, full  
track guide, operator, lubricant, coolant and full fuel tank

#### CX370C

Weight (LC)	37.200 kg
Ground Pressure (LC)	0.070 Mpa
Counterweight	7.700 kg

# CRAWLER EXCAVATORS

## GENERAL DIMENSIONS

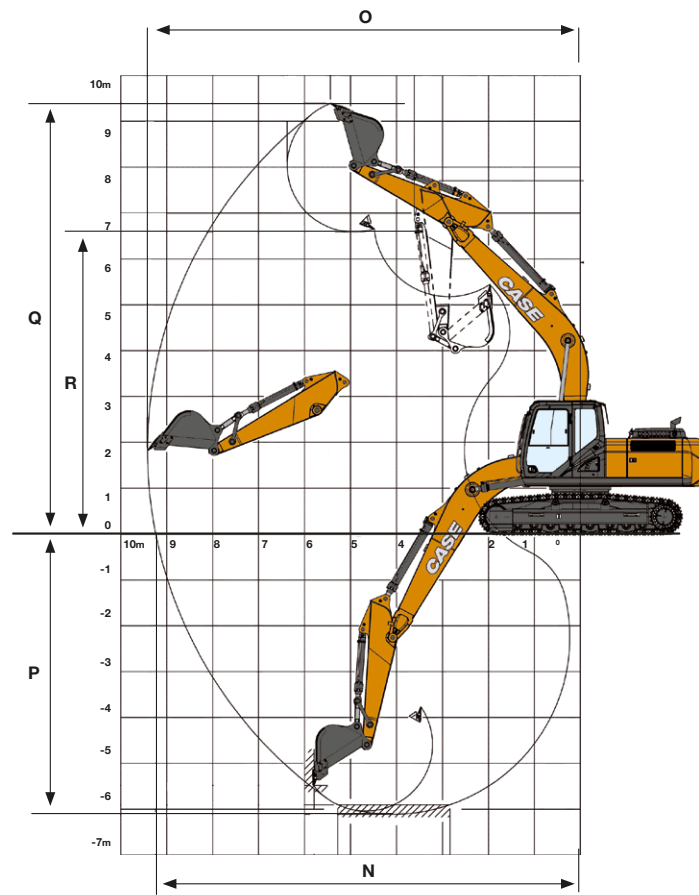


			Arm 2.21 m	Arm 2.63 m	Arm 3.25 m	Arm 4.04 m**
A	Overall length (without attachment)	mm	6010	6010	6010	6010
A1	Overall length (with attachment)	mm	11350	11230	11140	11200
B	Overall height (with attachment)	mm	3650	3640	3420	3650
C	Cab height	mm	3140	3140	3140	3140
D	Upper structure overall width	mm	3030/3120*	3030/3120*	3030/3120*	3030/3120*
E	Swing (rear end radius)	mm	3550	3550	3550	3550
F	Minimum ground clearance	mm	470	470	470	470
G	Clearance height under upper structure	mm	1200	1200	1200	1200
H	Wheel base (Center to center of wheels)	mm	4040	4040	4040	4040
I	Crawler overall length	mm	4980	4980	4980	4980
L	Crawler tracks height	mm	1090	1090	1090	1090
J	Track gauge	mm	2600	2600	2600	2600
K	Undercarriage overall width (with 600 mm shoes)	mm	3200	3200	3200	3200

\* CX370C only

\*\* Only for CX350C

# C- SERIES



## PERFORMANCE DATA

		CX350C / CX370C*	Arm 2.21 m	Arm 2.63 m	Arm 3.25 m	Arm 4.04 m**
Boom length	mm		6450	6450	6450	6450
Bucket radius	mm		1680	1680	1680	1680
Bucket wrist action	°		173	173	173	173
N	Maximum reach at GRP	mm	9990	10470	10980	11720
O	Maximum reach	mm	10200	10670	11170	11900
P	Max. digging depth	mm	6300	6730	7340	8140
Q	Max. digging height	mm	9850	10320	10370	10670
R	Max. dumping height	mm	6770	7140	7230	7540
	Arm digging force with auto power up	kN	248	213	179	153
	Bucket digging force with auto power up	kN	252	252	252	252

\* CX370C only

\*\* Only for CX350C



# LIFTING CAPACITY

## CX350C

REACH													
Front	0 m	1.0 m	2.0 m	3.0 m	4.0 m	5.0 m	6.0 m	7.0 m	8.0 m	9.0 m	10.0 m	11.0 m	At max reach
360°	[Icons of bucket configurations]												m

CX350C, Super Short arm 2.21 m, 600 mm shoes, 1.60 m<sup>3</sup> bucket (1240 kg), max reach 10.20 m

9.0 m																	7330*	7370*	6.83			
8.0 m									7880*	7880*							7000*	6530	7.81			
7.0 m									8170*	7930	7700*	6240					6830*	5470	8.53			
6.0 m								9240*	9240*	8630*	7810	8110*	6150	7300*	4870		6770*	4800	9.05			
5.0 m							11870*	11870*	10220*	9740	9090*	7560	8460*	5990	7550	4810		6800*	4370	9.42		
4.0 m					16330*	16330*	13080*	12520	11310*	9360	9770*	7280	8750*	5810	7430	4700		6540	4090	9.65		
3.0 m					14820*	14820*	14400*	11790	12320*	8930	10440*	7000	8900	5620	7300	4580		6330	3930	9.76		
2.0 m							15620*	11170	13100*	8530	10760	6740	8710	5440	7180	4470		6260	3870	9.76		
1.0 m							13370*	13770*	16440*	10750	13460	8230	10580	8540	5300	7080	4380		6330	3900	9.64	
0 m							16680*	14740	16670*	10550	13330	8020	10400	6370	8420	5190	7010	4320		6540	4020	9.42
-1.0 m					14500*	14500*	20280*	14930	16430*	10580	13240	7960	10320	6300	8380	5150	7030	4339		6940	4270	9.07
-2.0 m					16820*	16820*	18350*	18350*	19370*	15510	15830*	10670	13120*	8020	10360	6350	8450	5230		7580	4680	8.59
-3.0 m					19570*	19570*	21680*	21680*	17860*	15700*	14770*	10840	12300*	8150	10220*	6490				7870*	5330	7.96
-4.0 m							18820*	18820*	15700*	15520	13080*	11070	10810*	8420	8510*	6720				7660*	6400	7.15
-5.0 m							12520*	12520*	10360*	10360*	7910*	7910*								7340*	7340*	6.09

CX350C, Short arm 2.63 m, 600 mm shoes, 1.60 m<sup>3</sup> bucket (1240 kg), max reach 10.70 m

9.0 m																			5520*	5520*	7.53									
8.0 m											6630*	6630*	7040*	6380					5520*	5220*	8.42									
7.0 m											7780*	7860*	7370*	6360	5700*	4990			5050*	4890*	9.08									
6.0 m											8120*	7850*	7830*	6250	7120*	4970			4980*	4350	9.57									
5.0 m											11220*	11220*	9720*	9720*	8710*	7690	8040*	6080	7440*	4880	4970*	3990	9.91							
4.0 m											15200*	15200*	12820*	10850*	9550	9440*	7400	8460*	5890	7500	4760	6180	3870	5030*	3750	10.1				
3.0 m											17780*	17080*	14170*	12100	11930*	9110	10150*	7110	8890*	5690	7360	4630	6120	3800	5130*	3610	10.2			
2.0 m											16800*	15830*	15430*	11440	12820*	8690	10770*	6840	8770	5500	7220	4510	6040	3720	5310*	3560	10.2			
1.0 m											14700*	14700*	16420*	10950	13400*	8350	10670	6600	8590	5340	7100	4400	5970	3660	5540*	3580	10.1			
0 m											16150*	14860	16730*	10650	13420	8100	10460	6420	8450	5210	7010	4310			5890*	3690	9.91			
-1.0 m											12640*	12640*	19130*	14930	16600*	10590	13270	7980	10330	6310	8370	5140	6980	4290		6360	3900	9.58		
-2.0 m											14040*	14040*	16160*	16160*	20110*	15460	16190*	10650	13220*	8000	10340	6320	8390	5170	7050	4360		6880	4240	9.13
-3.0 m											16790*	16790*	20650*	20650*	18820*	15630	15350*	10780	12710*	8100	10340	6420	8440	5310			7410*	4760	8.54	
-4.0 m											21230*	21230*	20880*	20880*	16930*	15690*	13950*	11010	11550*	8300	9440*	6660					7270*	5580	7.78	
-5.0 m											17200*	14190*	14190*	11720*	11040	9450*	8410										6840*	6840*	6.81	



# LIFTING CAPACITY

## CX370C

Front 360°		REACH											At max reach	
		0 m	1.0 m	2.0 m	3.0 m	4.0 m	5.0 m	6.0 m	7.0 m	8.0 m	9.0 m	10.0 m	11.0 m	m

CX370C, Super Short arm 2.21 m, 600 mm shoes, 1.60 m3 bucket (1580 kg), max reach 10.20 m

9.0 m																		7100*	7100*	6.83															
8.0 m										7590*	7590*							6740*	6510	7.82															
7.0 m										7890*	7870	7380*	6220					6560*	5420	8.53															
6.0 m									8940*	8940*	8320*	7830	7790*	6120	7060*	4810		6500*	4730	9.06															
5.0 m										11560*	11560*	9910*	9710	8770*	7580	8140*	5960	7370*	4740	9.42															
4.0 m																				6500	3990	9.65													
3.0 m										15980*	14500*	14060*	11950	11980*	9000	10090*	7010	8830*	5580	7300	4510	6290	3820	9.76											
2.0 m																									6220	3760	9.76								
1.0 m																												6290	3790	9.65					
0 m																													6500	3920	9.42				
-1.0 m																														6910	4170	9.07			
-2.0 m																															7560	4590	8.06		
-3.0 m																																7510*	5260	7.97	
-4.0 m																																7290*	6350	7.15	
-5.0 m																																	6970*	6970*	6.09

CX370C, Short arm 2.63 m, 600 mm shoes, 1.60 m3 bucket (1580 kg), max reach 10.70 m

9.0 m																																	5240*	5240*	7.53	
8.0 m																																		4940*	4940*	8.42
7.0 m																																		4770*	4770*	9.08
6.0 m																																		4700*	4230	9.57
5.0 m																																		4690*	3850	9.91
4.0 m																																		4750*	3610	10.1
3.0 m																																		4850*	3460	10.02
2.0 m																																		5030*	3410	10.02
1.0 m																																		5260*	3430	10.01
0 m																																		5620*	3540	9.91
-1.0 m																																		6100*	3750	9.58
-2.0 m																																		6810	4100	9.13
-3.0 m																																		7000*	4630	8.54
-4.0 m																																		6860*	5480	7.78
-5.0 m																																		6420*	6420*	6.81



# LIFTING CAPACITY

## CX370C

Front 360°	REACH												At max reach m
	0 m	1.0 m	2.0 m	3.0 m	4.0 m	5.0 m	6.0 m	7.0 m	8.0 m	9.0 m	10.0 m	11.0 m	

CX370C, Standard arm 3.25 m, 600 mm shoes, 1.40 m<sup>3</sup> bucket (1510 kg), max reach 11.20 m

9.0 m																			3510*	3510*	8.23
8.0 m																			3330*	3330*	9.04
7.0 m																			3230*	3230*	9.65
6.0 m																			3190*	3190*	10.01
5.0 m																			3210*	3210*	10.04
4.0 m																			3260*	3260*	10.06
3.0 m																			3360*	3180*	10.7
2.0 m																			3500*	3120*	10.07
1.0 m																			3700*	3120*	10.06
0 m																			3980*	3210*	10.4
-1.0 m																			4360*	3370*	10.01
-2.0 m																			4890*	3640*	9.69
-3.0 m																			5660*	4060*	9.14
-4.0 m																			6820*	4700*	8.43
-5.0 m																			6700*	5750*	7.54
-6.0 m																			6470*	6470*	6.04





# STANDARD AND OPTIONAL

## STANDARD EQUIPMENT

### ENGINE

Engine Isuzu GH-6HK1X  
Tier 3/EU stage IIIA certified  
Common rail injection  
Neutral safety start  
Auto engine warm up  
Emergency stop  
Engine protection feature (EPF)  
Battery disconnection switch  
High ambient temperature cooling package

### CASE PERFORMANCE SYSTEMS

Auto Idle function  
One touch Idle  
Auto Idle shut down  
Torque control  
Boom Economy control (BEC)  
Swing Relief Control (SWC)  
Spool Stroke Control (SSC)  
**HYDRAULICS**  
Auto power boost  
2 speed travel

Auto travel speed change  
Selectable work modes

### UNDERCARRIAGE

Track shoe 600mm

### CABIN

Pressurized cab  
HVAC with auto climate control  
Mechanical suspension seat  
Multi function LED colour monitor  
Windshield wipers and washer  
On board diagnostic system  
Sun visor

## OPTIONAL EQUIPMENT

ROPS certified Cab  
FOPS top guard level 2  
Front stone guard level (OPG) 1  
Front stone guard level (OPG)2  
Rear view camera  
Side view camera  
Refuel pump  
Hammer (Breaker) circuit  
High flow circuit

Telematics  
ISO hand rails  
cyclone type air filter  
Additional fuel filters  
**CX300C**  
Buckets: 1.1m<sup>3</sup>, 1.2m<sup>3</sup>, 1.3m<sup>3</sup>, 1.4m<sup>3</sup>  
Dipper Arm: 2.65m HD, 3.18m STD, 3.66m STD  
Track shoe: 700mm 800mm  
Track guides: single, triple

### CX350C

Buckets: 1.4m<sup>3</sup>, 1.6m<sup>3</sup> GP, 1.8m<sup>3</sup> LM,  
Dipper Arm: 2.21m, 2.62m, 3.25m, 4.04m  
Track shoe: 700mm 800mm

### CX370C

Buckets: 1.6m<sup>3</sup> RB, 1.8m<sup>3</sup> RB  
Dipper Arm: 2.21m, 2.62m, 3.25m  
Track shoe: 700mm 800mm



## PARTS AND SERVICE

Wide network of customer support across the world.

No matter where you work, we're here to support and protect your investment and exceed your expectations. You can count on Case and your Case dealer for full-service solutions-productive equipment, expert advice, flexible financing, genuine Case parts and fast service. We're here to provide you with the ultimate ownership experience. To locate a Case dealer or learn more about Case equipment or customer service, go to [www.casece.com](http://www.casece.com)

**NOTE:** CASE provides specific outfits for various countries and many optional fittings (OPT). The illustrations on this or other leaflets may relate to standard or optional fittings. Please consult your CASE dealer for any information in this regard and any possible updating on components. CNH Industrial reserves the right to modify machine specifications without incurring any obligation relating to such changes.

