

Midi Excavators E-SERIES

CX70E | CX75E | CX85E | CX90E | CX100E



CASE
CONSTRUCTION



CX70E

MONO-BOOM ZERO TAIL

Engine V2607-CR-T

Engine power 44.3 kW - 60.2 hp

Operating weight 7290 kg



CX75E

2-PIECE-BOOM SHORT RADIUS

Engine V2607-CR-T

Engine power 44.3 kW - 60.2 hp

Operating weight 7580 kg



CX85E

FIXED SIDE BOOM ZERO TAIL

Engine 4TNV98CT

Engine power 53.7 kW - 73.0 hp

Operating weight 8830 kg



CX90E

BOOM SWING ZERO TAIL

Engine 4TNV98CT

Engine power 53.7 kW - 73.0 hp

Operating weight 9210 kg



CX100E

2-PIECE-BOOM ZERO TAIL

Engine 4TNV98CT

Engine power 53.7 kW - 73.0 hp

Operating weight 10080 kg

DELIVER, ADAPT, EVOLVE.

INTRODUCING THE EVOLUTION SERIES

The Evolution series combines CASE's usual lifting and loading performance with brand new "smart features", enhancing the on-board experience and ensuring the best settings for every task, no matter how challenging.



NEW MACHINES, STATE-OF-THE-ART FEATURES.

PRODUCTIVE TO THE CORE

Designed with both owners and operators in mind, the new E-Series Midi range is equipped with great features to boost productivity on every job site.

ZERO-TAIL MODELS

Work in confined spaces without compromising stability with smart design solutions such as the optional internal light additional 440kg counterweight.

LARGE HYDRAULIC CAPACITY

with up to 3 auxiliary circuits compatible with a wide range of attachments: work efficiently on any application.

TRAVEL MODE WITH JOYSTICK STEERING

Dozing and backfilling has never been so easy!

2-PIECE-BOOM MODELS

Higher dumping height, longer horizontal reach and the ability to dig much closer to the machine.

ERGONOMIC JOYSTICKS

with electro-proportional roller switches: superior controllability means more productivity!

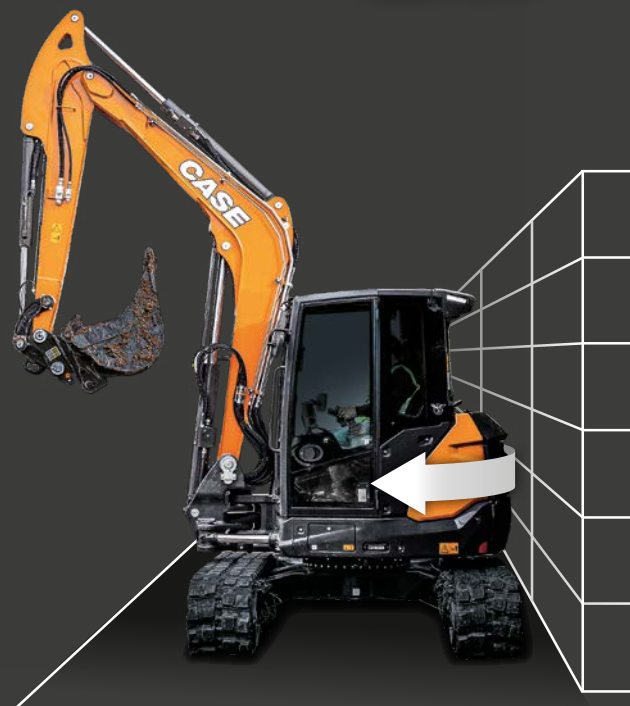
INTUITIVELY LOCATED CONTROLS

Manage all aspects of the excavator via the onboard display.





SCAN OR CLICK QR
TO LISTEN TO OUR
CUSTOMERS' VOICES



ZERO-TAIL

Highest flexibility maintaining best-in-class stability.



2-PIECE-BOOM

- Higher dumping height;
- Longer horizontal reach;
- Ability to dig much closer to the machine.



CONTROLS

Intuitive location of push buttons and roller switch.

CHOOSE THE SMART EXCAVATION SOLUTION.

SIX GREAT REASONS TO GO COMPACT



1 TOP PERFORMANCE IN A VERSATILE PACKAGE

Compact, powerful, adaptable excavators;

Varied boom types with great stability;

Large hydraulic capacity, compatible with a wide range of attachments;

Up to 3 auxiliary circuits.

2 BOOMS FOR EVERY NEED

Mono boom: robust, reliable, deep digging (CX70E, CX90E);

2-piece boom: manoeuvrable, great reach and dump height (CX75E, CX100E);

Fixed side boom: excellent lifting capacity and visibility, and reduced front overhang (CX85E).

3 FIRST-CLASS COMFORT

Ergonomic joysticks;

Intuitively located controls;

Comfortable operator position;

Foldable travel pedals;

Hands-free calls with Bluetooth radio;

Automatic air conditioning;

Low noise and vibrations.

SCAN OR CLICK QR
TO WATCH THE FULL
WALKAROUND



4 **CUTTING-EDGE TECHNOLOGY**

Highly advanced hydraulic architecture: set movements, operating modes and auxiliary circuit flow via the onboard computer*;

Travel mode with joystick steering;
2 travel speeds with auto-shift.

* On applicable models.

5 **POWERFUL EFFICIENCY**

Best-in-class engine power;

Electronically controlled,
adjustable variable volume pump
and economy operating mode:
reduced fuel consumption;

Auto-idle: better fuel efficiency
and lower noise level.

6 **SUPERIOR SAFETY & RELIABILITY**

LED lights, large mirrors
and rear camera for great
all-around visibility;

Smart 2-piece front window
design for great lower and
upper visibility;

Travel alarm;

State-of-the-art components.



CLEAN, EFFICIENT POWER.

SUSTAINABILITY CHANGES THE WORLD

Each component contributes to creating a high-performing machine, delivering maximum output when required or striving for fuel efficiency to improve running costs.



Powerful, reliable Stage V engines.



Three operating modes – Power, Standard and Economy – selectable via the onboard display.



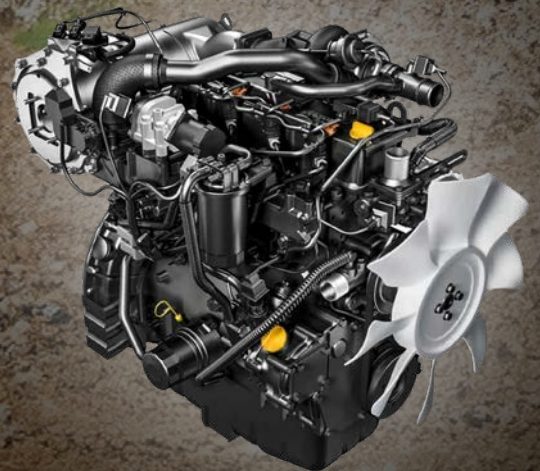
Electronic engine RPM control with auto-idle, minimising fuel consumption and noise/vibration levels.



Electronically controlled, adjustable variable volume pump, providing oil only where required.



Panolin bio-degradable oil: an eco-friendly alternative that ensures excellent performance and longevity.



OPERATE WITH EASE.

PRODUCTIVITY AND COMFORT COMBINED

CASE E-Series Midi machines are premium models with a vast variety of high-tech cab features that champion comfort for the operator.

ONBOARD COMPUTER WITH MULTIFUNCTION DISPLAY

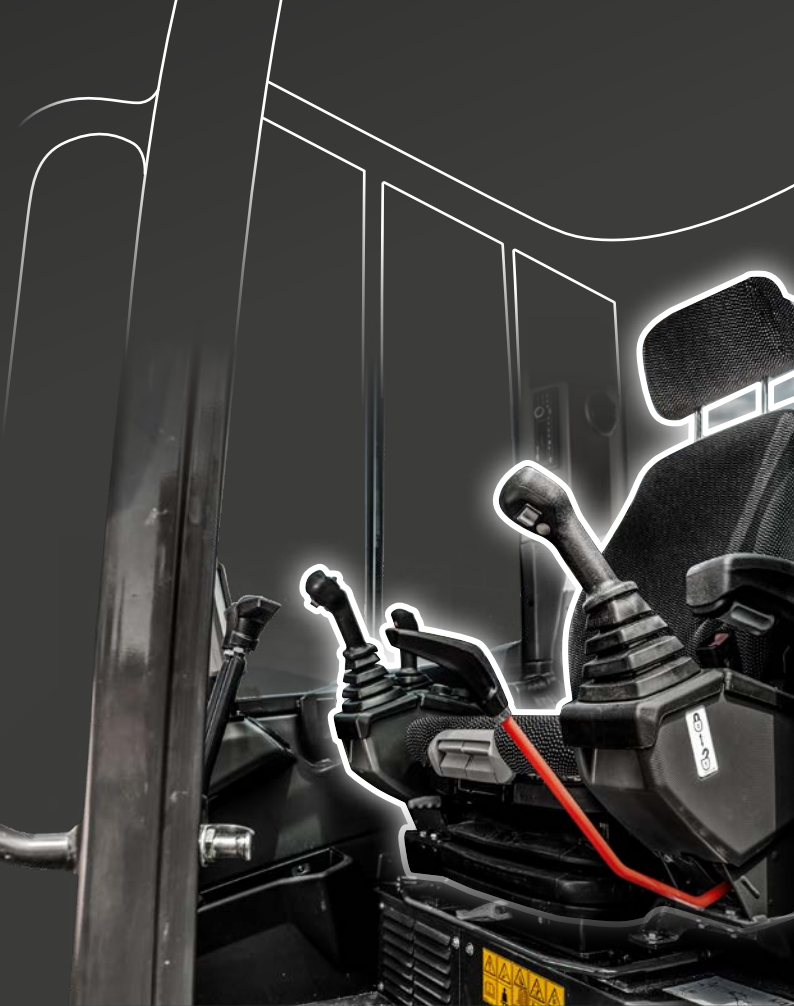
Diagnostics and machine emergencies;
Hydraulic and operating mode settings;
Display for the rear-view camera;
DPF regeneration control;
Automatic air conditioning control;
...and much, much more!

DAB RADIO

with Bluetooth connectivity, enabling
hands-free phone calls.

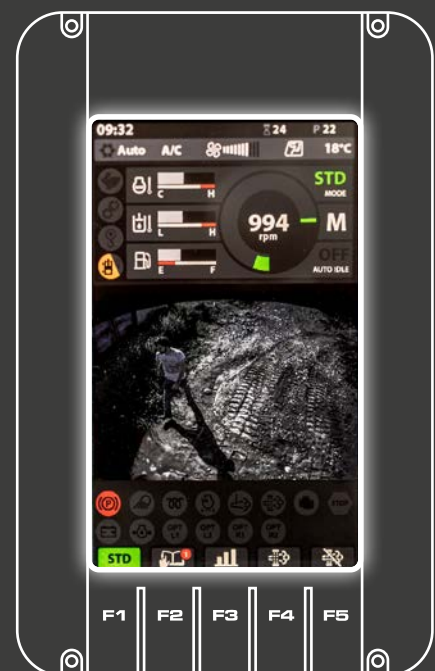
ERGONOMIC AND SPACIOUS OPERATING POSITION

3 types of seat options, with
mechanical or pneumatic suspension,
along with heated cushions.
The design of the joystick handles
ensures excellent comfort for the
operator, while the intuitive location of
push-buttons and electro-proportional
roller switches maximises productivity.



OPERATING POSITION

The spacious and ergonomically designed operating position ensures maximum operator comfort and productivity.



ON BOARD COMPUTER

All the key settings at your finger tip.



TILTABLE CAB

With all maintenance points accessible from the ground.



UNDERCARRIAGE

Five lower rollers and one upper roller. Maximum stability and comfort during travel.





RELY ON ROBUST DESIGN.

SMOOTH RUNNING MADE EASY

CASE machines are designed with components sourced from the best-in-class suppliers.

With our E-Series Midi Crawler Excavators, safe, easy maintenance is enabled thanks to the tiltable cab. Once tilted – which is a quick, easy operation – all maintenance points are perfectly accessible from the ground.

The reversible fan drive, controllable via the onboard display, features an optimal heat-exchange and efficient radiator cleaning.

The undercarriage has been designed with 5 lower rollers (with a combination of external and internal flanges) and 1 upper roller to provide maximum stability and comfort during travel, as well as to minimise the possibility of de-tracking.

MAINTAIN TOP PERFORMANCE.

OUTSTANDING AFTER SALES SERVICES

Keep your equipment performing at its best and protect your investment's value with the extensive offering of high-quality CASE Parts.

Genuine Parts HIGH PERFORMANCE

Optimize your performance and add value to your machine with high-quality genuine parts.

Attachments BUSINESS SOLUTIONS

Add versatility to performance with CASE attachments designed for CASE machines and tested by CASE engineers.

FLEETPRO

Ensure your machine's performance beyond warranty and manage your budget with CASE's quality second-line range of parts.

Reman Parts REMANUFACTURED

Choose sustainable quality with remanufactured parts designed for CASE equipment of all ages.

CASE **ServiceSolutions**

Enjoy the peace of mind of knowing CASE Service Solutions will keep your equipment in top condition with maximum uptime, no unexpected costs, and help you optimize your profitability.



CASE CARE

Maximize your machine's uptime and efficiency with this planned maintenance program.



CASE PROTECT

Avoid unexpected costs with this extended warranty program.



CASE FLUID ANALYSIS

Ensure your machine's uptime with detailed fluid reporting.



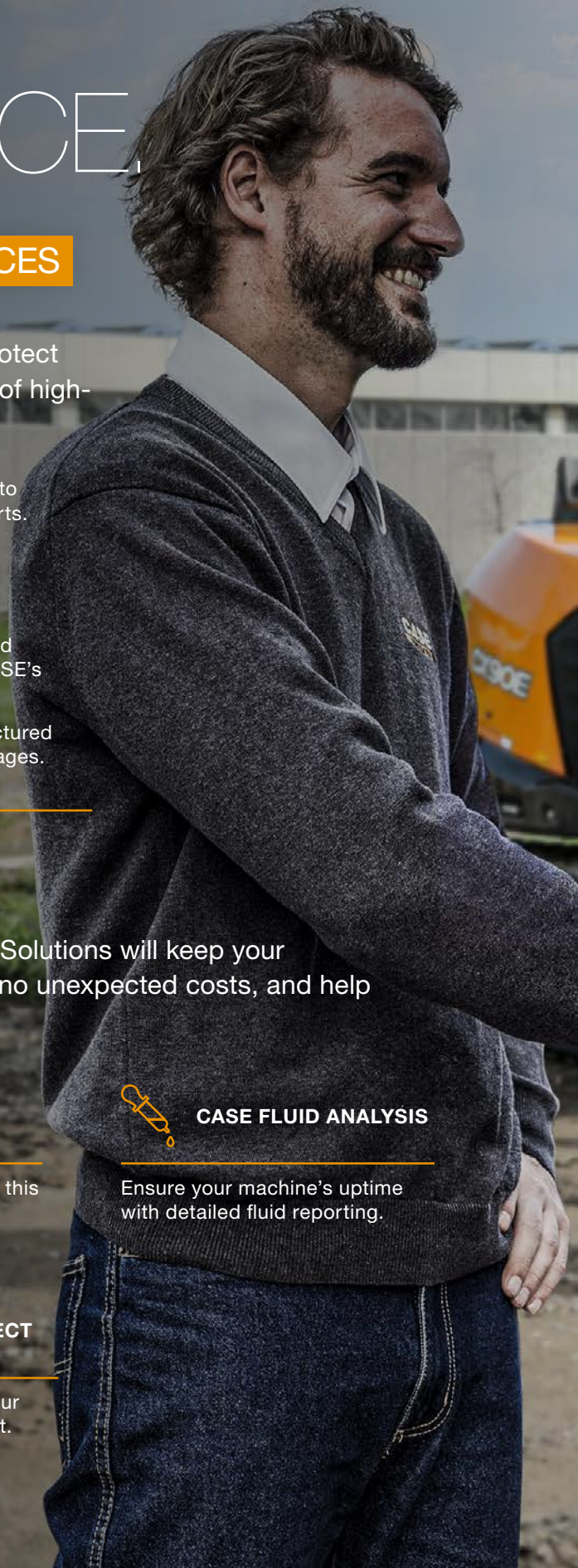
myCASEConstruction

Puts the power of centralized fleet management in your hands - through a single, easy-to-use portal and mobile app.



CASE SITECONNECT

Connects your Dealer to your machine for remote support.

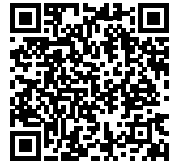




SPEC SHEET.

SPECIFICATIONS		CX70E	CX75E	CX85E	CX90E	CX100E
		MONO-BOOM ZERO TAIL	2-PIECE-BOOM SHORT RADIUS	FIXED BOOM ZERO TAIL	BOOM SWING ZERO TAIL	2-PIECE-BOOM ZERO TAIL
GENERAL						
ISO 6016 operating weight with rubber tracks (with bucket, operator and full diesel tank)	kg	7290	7580	8830	9210	10080
Specific ground pressure	kg/cm ²	0,34	0,35	0,39	0,40	0,44
Travel speed	km/h	1 st : 0 ÷ 2,1 / 2 nd : 0 ÷ 4,2 (AUTO TWO SPEED)	1 st : 0 ÷ 2,1 / 2 nd : 0 ÷ 4,2 (AUTO TWO SPEED)	1 st : 0 ÷ 2,6 / 2 nd : 0 ÷ 5,2 (AUTO TWO SPEED)	1 st : 0 ÷ 2,6 / 2 nd : 0 ÷ 5,2 (AUTO TWO SPEED)	1 st : 0 ÷ 2,6 / 2 nd : 0 ÷ 5,2 (AUTO TWO SPEED)
Upper frame rotation speed	rpm	11.0	11.0	9.5	9.5	9.5
DIMENSIONS						
Track width	mm	2100	2100	2320	2320	2320
Rear Swing radius	mm	1050	1050	1220	1220	1220
Cab height / with grid	mm	2680 / 2760	2680 / 2760	2680 / 2760	2680 / 2760	2680 / 2760
Transport lenght (std/long arm)	mm	5480 / 5460	5562 / 5582	5820 / 5650	6280 / 6310	6060 / 6530
ENGINE						
Manufacturer		Kubota	Kubota	Yanmar	Yanmar	Yanmar
Model name (for manuals and brochures)		V2607-CR-T	V2607-CR-T	4TNV98CT	4TNV98CT	4TNV98CT
Emission level		Stage V	Stage V	Stage V	Stage V	Stage V
Engine Power	kW	44.3	44.3	53.7	53.7	53.7
	hp	59.4	59.4	72.0	72.0	72.0
	rpm	2300	2300	2100	2100	2100
Displacement	cc	2615	2615	3319	3319	3319
Cylinders	n°	4	4	4	4	4
Cooling		liquid	liquid	liquid	liquid	liquid
Fuel		diesel	diesel	diesel	diesel	diesel
Alternator	V (A)	12 (60)	12 (60)	12 (80)	12 (80)	12 (80)
Battery	V (Ah/A)	12 (95)	12 (95)	12 (100/900)	12 (100/900)	12 (100/900)
HYDRAULIC SYSTEM						
Circuit Type		Load Sensing closed center system with "Flow Sharing" control valve	Load Sensing closed center system with "Flow Sharing" control valve	eHPQ Rexroth system	eHPQ Rexroth system	eHPQ Rexroth system
Pump type		1 LS hydraulic variable pump with electronic control + 1 gear pump	1 LS hydraulic variable pump with electronic control + 1 gear pump	1 electronic pump (EOC) with variable flow rate+ 1 gear pump on engine PTO (FAN DRIVE)	1 electronic pump (EOC) with variable flow rate+ 1 gear pump on engine PTO (FAN DRIVE)	1 electronic pump (EOC) with variable flow rate+ 1 gear pump on engine PTO (FAN DRIVE)
Pump capacity	l/min	141 + 27.8	141 + 27.8	192	192	192
Max. circuit calibration pressure	bar	280	280	290	290	290
Flow rate (max pressure) auxiliary system AUX1	l/min (bar)	85 (200)	85 (200)	160 (200)	160 (200)	160 (200)
Flow rate (max pressure) auxiliary system AUX1 - mulcher mode	l/min (bar)	60 (180)	60 (180)	62 (180)	62 (180)	62 (180)
Flow rate (max pressure) auxiliary system AUX2	l/min (bar)	65/90 (280)	65/90 (280)	90/60 (290)	90/60 (290)	90/60 (290)
Flow rate (max pressure) auxiliary system AUX3	l/min (bar)	45 (280)	45 (280)	50 (250)	50 (250)	50 (250)
PERFORMANCE						
Digging depth with standard arm (long arm)	mm	4070 (4270)	4120 (4320)	3670 (4020)	4130 (4480)	4320 (4670)
Max. dumping height with standard arm (long arm)	mm	4450 (4590)	5490 (5670)	5180 (5420)	4660 (4880)	5960 (6270)
Bucket breaking force ISO 6015	daN	4850	4850	6300	6300	6300

DEEP DIVE INTO
THE FULL SPECS



SPECIFICATIONS		CX70E	CX75E	CX85E	CX90E	CX100E
		MONO-BOOM ZERO TAIL	2-PIECE-BOOM SHORT RADIUS	FIXED BOOM ZERO TAIL	BOOM SWING ZERO TAIL	2-PIECE-BOOM ZERO TAIL
Standard arm breakout force ISO 6015 (long arm)	daN	2900 (2700)	2900 (2700)	4350 (3850)	4350 (3850)	4350 (3850)
Lifting capacity 1m height - 3m reach - std arm - blade down - front	kg	3150	2140	4420	5610	4270
Lifting capacity 1m height - 3m reach - std arm - blade down - side	kg	2170	2110	3540	3250	3570
Traction force	daN	7150	7150	7960	7960	7960
Max slope	% / °	60% / 30°	60% / 30°	60% / 30°	60% / 30°	60% / 30°
FILLINGS						
Fuel tank	l	85.0	85.0	105.0	105.0	105.0
Hydraulic oil tank	l	60.0	60.0	75.0	75.0	75.0
Hydraulic system capacity	l	80.0	80.0	135.0	135.0	135.0
Cooling system capacity	l	12.0	12.0	23.0	23.0	23.0
Engine oil	l	10.2	10.2	10.0	10.0	10.0
CONTROLS						
Boom, dipper stick, bucket and upper frame swing		2 pilot joysticks	2 pilot joysticks	2 canbus electronic joysticks	2 canbus electronic joysticks	2 canbus electronic joysticks
Boom swing		electroproportional switch on left joystick	electroproportional switch on left joystick	n.a.	1 canbus electronic roller on left joystick	1 canbus electronic roller on left joystick
Two-piece boom		n.a.	electroproportional switch on right joystick	n.a.	n.a.	1 canbus electronic roller on right joystick
Travel		2 pilot levers	2 pilot levers	2 canbus electronic pedals/ levers	2 canbus electronic pedals/ levers	2 canbus electronic pedals/ levers
Dozer blade		pilot lever	pilot lever	1 canbus electronic joystick	1 canbus electronic joystick	1 canbus electronic joystick
AUX1 auxiliary system		electroproportional switch on right joystick	electroproportional switch on right joystick	1 canbus electronic roller on right joystick	1 canbus electronic roller on right joystick	1 canbus electronic roller on right joystick
AUX2 auxiliary system		electroproportional switch on right joystick	electroproportional switch on right joystick	1 canbus electronic roller on right joystick	1 canbus electronic roller on right joystick	1 canbus electronic roller on right joystick
AUX3 auxiliary system		electroproportional switch on left joystick	electroproportional switch on left joystick	1 canbus electronic roller on left joystick	1 canbus electronic roller on left joystick	1 canbus electronic roller on left joystick
BOOM and ARM						
Standard arm length	mm	1900	1900	1760	1760	1760
Long arm length	mm	2100	2100	2110	2110	2110
DOZER BLADE						
Width	mm	2100	2100	2320	2320	2320
UNDERCARRIAGE						
Lower rollers	n°	5 right + 5left	5 right + 5left	5 right + 5left (rubber tracks) - 6 right + 6left (steel or steel/ rubber tracks)	5 right + 5left (rubber tracks) - 6 right + 6left (steel or steel/ rubber tracks)	5 right + 5left (rubber tracks) - 6 right + 6left (steel or steel/ rubber tracks)
Upper rollers	n°	1	1	1	1	1
Steel or steel/rubber tracks Width	mm	450	450	450 std (600 opt)	450 std (600 opt)	450 std (600 opt)
Overall width (with 450mm shoes)	mm	2100	2100	2320	2320	2320
Crawlers lenght	mm	2745	2745	2880	2880	2880

STANDARD AND OPTIONS.

	CX70E	CX75E	CX85E	CX90E	CX100E
2 speed travel with Automatic Shift Down (from 2 nd to 1 st gear if more traction is required) and Shift-up	●	●	●	●	●
Automatic Air Conditioning and Heating	●	●	●	●	●
Additional counterweight	○	●	○	○	●
Air Filter with drain valve and electric anti-clogging indicator	●	●	●	●	●
Anti-theft	○	○	○	○	○
Automatic Centralized Lubrication	○	○	○	○	○
AUX1	●	●	●	●	●
AUX2	●	●	●	●	●
AUX3	○	○	○	○	○
Standard Hydraulic oil and Lubricants	●	●	●	●	●
Bio Hydraulic oil and lubricants	○	○	○	○	○
Boom Lift cylinder and dozer blade cylinder protection	●	●	●	●	●
Buckets	○ ■	○ ■	○ ■	○ ■	○ ■
CASE Sitewatch and SiteConnect	●	●	●	●	●
Constant flow provision (for Mulcher)	○	○	○	○	○
Direct drainage to oil tank	●	●	●	●	●
Dozer Float	○	○	○	○	○
Standard dozer blade	●	●	●	●	●
6 way dozer blade	-	-	○	○	○
Electric diverter between Single effect and Double effect AUX1	●	●	●	●	●
Electric fuel refill pump with auto-stop function	●	●	●	●	●
Electronic Proportional RPM control with Auto-Idle	●	●	●	●	●
Standard LED working lights (boom, right-front hood and cab-front)	●	●	●	●	●
Extra LED working lights (cab-rear)	○	○	○	○	○
FOPS Level 2	●	●	●	●	●
Front protection grid	■	■	■	■	■
Fabric seat with Premium Mechanical suspension	○	○	○	○	○
Fabric seat with Pneumatic suspension	○	○	○	○	○
Fabric seat with Pneumatic suspension and Heating	○	○	○	○	○
Mulcher setup	○	○	○	○	○
Object handling kit	●	●	●	●	●
Pattern changer	-	-	●	●	●
Quick coupler hyd lines	○	○	○	○	○
Quick couplers (mechanical and hydraulic)	○ ■	○ ■	○ ■	○ ■	○ ■
DAB Radio, Bluetooth, USB, Aux-in	●	●	●	●	●
Rear view camera	○	○	●	●	●
Rear-view mirrors	●	●	●	●	●
Rotating beacon	○	○	○	○	○
Hydraulic Reversible Fan Drive with automatic functionality	●	●	●	●	●
Rubber pads for Steel tracks	■	■	○	○	○
Standard arm	●	●	●	●	●
Long arm	○	○	○	○	○
Rubber tracks	●	●	●	●	●
Steel tracks	○	○	○	○	○
Telematics	●	●	●	●	●
Tiltable Cab (ROPS/TOPS - FOPS Level 2)	●	●	●	●	●
Travel alarm	○	○	○	○	○
Variable Volume Pump	●	●	●	●	●
Windshield washer	●	●	●	●	●





BUILDING ON OUR HERITAGE.

Since 1842, at CASE Construction Equipment we have lived by an unwavering commitment to build practical, intuitive solutions that deliver both efficiency and productivity.

The vast CASE dealers' network is always ready to support and protect your investment.

At the end of the day, we do what's right for our customers and our communities so that they can count on CASE.

CNH Industrial
Deutschland GmbH
Case Baumaschinen
Benzstr. 1-3 - D-74076 - Heilbronn
DEUTSCHLAND

CNH Industrial
Maquinaria Spain, S.A.
Avenida Aragón 402
28022 Madrid
ESPAÑA

CNH Industrial France, S.A.
16-18 Rue des Rochettes
91150 Morigny-Champigny
FRANCE

CNH Industrial Italia Spa
Lungo Stura Lazio 19
10156, Torino
ITALIA

CASE Construction Equipment
Cranes Farm Rd
Basildon - SS14 3AD
UNITED KINGDOM

NOTE: Standard and optional fittings can vary according to the demands and specific regulations of each country. The illustrations may include optional rather than standard fittings - consult your Case dealer. Furthermore, CNH Industrial reserves the right to modify machine specifications without incurring any obligation relating to such changes.

Conforms to directive 2006/42/EC

CASECE.COM
00800-2273-7373

The call is free from a land line.
Check in advance with your Mobile Operator if you will be charged. Toll free number not available from all calling areas.