

PUMA®

MODELS: 185 / 200 / 220 / 240 / 260

SPECIFICATIONS



TECHNOLOGY MEETS LEGENDARY POWER

The Puma® series tractor provides an enhanced level of connectivity, productivity and comfort. Building on the Puma tractor footprint first established in 2006, the Puma tractor is truly a world-class tractor at home on any operation. With five models to choose — from 180 HP up to the 260 HP model, there's a tractor that's up to your demanding tasks.



CONNECTIVITY AND COMFORT

The Puma tractor delivers advanced technology, intuitive controls, and smart features that help you work efficiently. Designed for comfort, built for performance, and equipped to handle the demands of the job—this is a tractor that earns its keep every day.

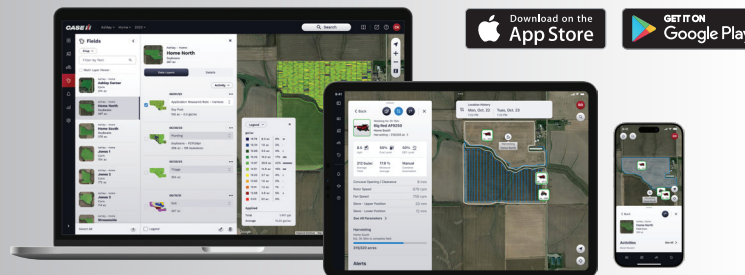
- **Spacious, quiet cab** for all-day comfort.
- **Increased fuel tank capacity.**
- **Enhanced lighting** improves road safety and provides greater visibility.
- Standard **Pro 1200 display** and **Vision Pro** operating system keeps you connected.
- Proactively monitor machine health, quickly spot high-priority issues and setup customized notifications with **Case IH FieldOps**.
- **Connectivity Included** is standard on Puma series tractors, providing subscription-free technology for the life of the modem.

There's a lot more to discover, so visit your local Case IH dealer today.



CASE IH FIELDOPS™

View and monitor your equipment and field information in one place, all on your mobile device, iPad® or the web.



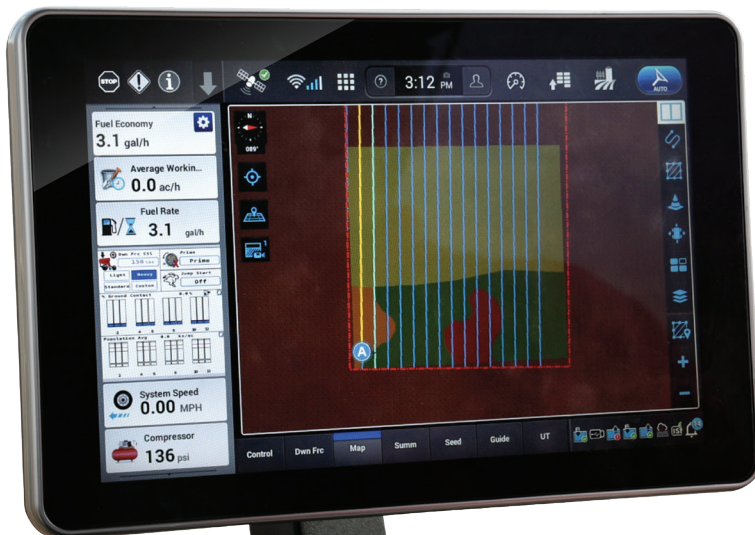
OPERATOR ENVIRONMENT

CAB AND COMFORT FEATURES

- A cab that's **4% longer** and has 7.5% more volume.
- Bigger cab means **more legroom and more glass for better views**.
- Redesigned steps, with a **larger door and wider cab entry**.
- **Armrest with MultiFunction handle**, Pro 1200 display and configurable controls.
- **Storage areas** around and behind the operator seat. Storage below the passenger seat can be converted to an **optional cool box**.
- Dual blowers **cool the cab 35% faster** than previous models.

INTEGRATED TECHNOLOGY

- Minimize set up with the factory-enabled **Vector Pro receiver engineered for quick line acquisition and precise accuracy**.
- The Vision Pro operating system and Pro 1200 12-inch touchscreen display enable easy equipment operations visualization and set up. Additionally, engage in Remote Display View sessions via FieldOps with a dealer or operator **for greater in-cab insights**.





WORK SMARTER

Engineers designed the Puma tractor not only to be ready for the field today, but to be ready for future technology that's certain to be coming tomorrow. We listened to our customers to give them **what they needed most: power, reliability, and more uptime with an enhanced operator environment** that features the latest technology.

FEATURES

- **Roof-mounted right-hand monitor rail for additional electronics.**
- Multiple power ports throughout the cab.
- Left side storage with **optional USB charging and 120-volt AC power converter.**
- External rear connections include an **ISOBUS socket, 40-amp power port and 7-pin lighting socket for implements.**
- Optional external front connections include a **power port, 7-pin lighting socket, ISOBUS breakaway socket.**
- Three tethered, reversible rubber inserts **form a dust/water seal for improved cab connections.**
- **Color-coded hydraulic couplers** with quick-release levers.

CUSTOMIZED LUXURY

Standard features make the Puma tractor great, and combined with the many optional features, you can design this tractor to fit your needs.

STANDARD FEATURES

- **Rear fender controls.**
- **Cab suspension.**
- Larger, redesigned fuel tank is **15% larger than previous models.**
- **Advanced LED** field and driving lights.
- **Large integrated tool box.**
- Redesigned right-hand steps with **easy access to the battery box.**

OPTIONAL FEATURES

- **Hydraulic cab suspension.**
- **Higher gross vehicle weight** option for 220, 240 and 260 CVXDrive models.
- **Cool box storage.**
- **Monitor rail on the window.**



- A** Additional Storage Behind and Under the Training Seat
- B** Case IH Signature Leather Wrapped Steering Wheel *(Optional)*

- C** High-Visibility Roof Panel *(Optional)*
- D** Bluetooth® Radio with Satellite Radio and Weather Band
- E** A-Pillar Display

- F** MultiFunction Handle
- G** Pro 1200 Display
- H** MultiControl Armrest



MODEL	185 POWERDRIVE	200 POWERDRIVE	220 POWERDRIVE	240 POWERDRIVE	185 CVXDRIVE	200 CVXDRIVE	220 CVXDRIVE	240 CVXDRIVE	260 CVXDRIVE
POWER									
Engine Type	Tier 4 B/Final–Stage V								
Engine HP ¹	180	200	220	240	180	200	220	240	260
Maximum Engine HP ²	200	220	240	260	200	220	240	260	281
Engine Maximum Boosted HP ³	225	245	260	270	225	245	260	270	302
PTO HP ⁴	150	170	190	210	150	170	190	210	230
Cylinders/Number of Valves/Displacement	6 cyl./4 valves/6.7 L (411 cu in.)								
Engine Aspiration	Turbocharged/air to air intercooled								
ELECTRICAL									
Alternator (Standard/Optional)	200 amps/250 amps								
Battery	12 volt–1,300 CCA								
TRANSMISSION/PTO									
Transmission (Standard/Option 1/Option 2)	18F×6R 25 mph (40 kph) PowerDrive/19F×6R 25 mph (40 kph) PowerDrive/19F×6R 30 mph (50 kph) PowerDrive				25 mph (40 kph) continuously variable transmission (CVXDrive)/30 mph (50 kph) continuously variable transmission (CVXDrive)/NA				
Creep Speeds @ Rated Engine RPM	Minimum target speed – 740 feet per hour (0.14 mph/0.022 kph)				Minimum target speed – 98 feet per hour (0.018 mph – 0.03 kph)				
PTO	540/1,000 rpm 1½ in. interchangeable shafts/1,000–1,000E electronic shifttable & 540E/1,000 interchangeable shafts								
AXLES									
Rear Axle (Standard/Optional)	112 in. (2845 mm) Bar Axle/119 in. (3023 mm) Bar Axle								
Bar Axle Diameter	4.125 in. (105 mm)								
Rear Axle Lengths (Standard/Optional)	112 in. (2 845 mm)/119 in. (3 022 mm)								
Suspended Front Axle	Optional								
Rear Axle Tread Adjustability	60.2 in. – 88 in. (1 528 – 2 235 mm)								
MFD Tread Adjustability	61.4 in. – 89 in. (1 560 – 2 258 mm)								
Wheelbase (Standard/Optional)	113.6 in. (2 884 mm)								
HYDRAULICS/HITCH									
System Type	Closed center, Pressure Flow Compensating (PFC)								
Main Implement Pump Max Flow ⁵	31.7 gpm (120 L/min.)/39.6 gpm (150 L/min.)				39.6 gpm (150 L/min.)/44.9 gpm (170 L/min.)				
Max Flow Available @ One Remote	36.9 gpm (140 L/min.)*								
Rear 3-point Hitch Category (Standard/Optional)	Cat. 2/3N								
Rear Hitch Lift Capacity (Max)	9,450 lb. (4 286 kg)/15,000 lb. (6 804 kg)								
Front Hitch Shaft Size and PTO Speed	1½ in. (85 mm), 6-spline, 1,000 rpm @ 1,895 engine rpm								
Mid-Mount Valve	2 or 3 Function								
CAPACITIES									
Standard Fuel Tank	124 gal. (470 L)								
Diesel Exhaust Fluid (DEF) Tank	14 gal. (54 L)								
Engine Oil with Filter	16 US qt. (16 L)								
Hydraulic Fluid	22 US gal. (82 L)								
CAB									
Cab Suspension (Standard/Optional)	Mechanical/NA				Mechanical/Hydraulic				
Glass Area/Cab Sound Level	68.2 sq. ft. (6.3 m ²)/66 DBa								
WEIGHT									
Average Standard Weight ⁶ w/Standard Front Axle	18,739 lb. (8 500 kg)				18,959 lb. (8 600 kg)			19,265 lb. (8 738 kg)	

*Depended on hydraulic pump selection

¹Rated 2,100 rpm ISO per ECE R120 (CV) ²1,800 rpm ISO per ECE R120 (CV) ³1,800 rpm ISO per ECE R120 (CV)–Power boost available during mobile PTO/hydraulics/transport operation ⁴Rated 2,100 rpm per SAE per ECE R120 (CV)–2,200 rpm for road transport and hydraulic work, limited @ 2,100 rpm for PTO and low range transport ⁵2,200 rpm for road transport and hydraulic work, limited @ 2,100 rpm for PTO and low range transport ⁶Average Standard Weight is based on the standard tractor, w/18.4R42 and front weight bracket without operator and minimum fuel.



f y x @ in
caseih.com

SAFETY NEVER HURTS!TM Always read the Operators Manual before operating any equipment. Inspect equipment before using it, and be sure it is operating properly. Follow the product safety signs, and use any safety features provided. CNH Industrial America LLC reserves the right to make improvements in design and changes in specifications at any time without notice and without incurring any obligation to install them on units previously sold. Specifications, descriptions and illustrative material herein are as accurate as known at time of publication, but are subject to change without notice. Availability of some models and equipment builds varies according to the country in which the equipment is used.

©2025 CNH Industrial America LLC. All rights reserved. Case IH is a trademark registered in the United States and many other countries, owned by or licensed to CNH Industrial N.V., its subsidiaries or affiliates. Any trademarks referred to herein, in association with goods and/or services of companies other than CNH Industrial America LLC, are the property of those respective companies. Printed in U.S.A. www.caseih.com CIH25052802

CASE IH