

CX5 & CX6

CX5.80

CX5.90

CX6.80

CX6.90





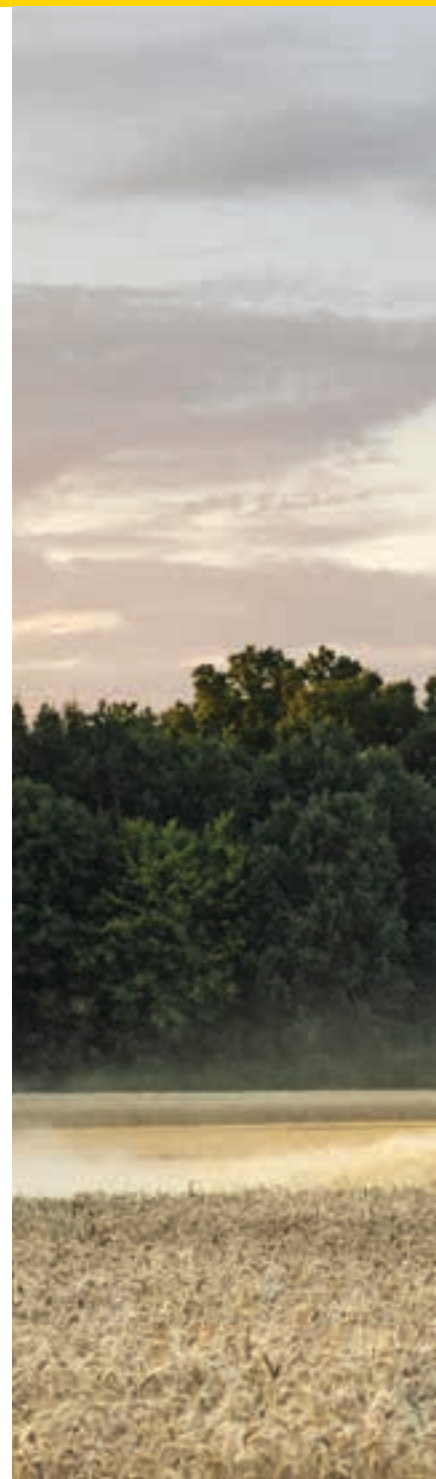
Summary

| | |
|--|----|
| A combine for every field | 04 |
| The new CX5 & CX6 range | 06 |
| Excellent capacity Best-in-class versatility | 08 |
| A perfect start | 10 |
| Enhanced crop flow for more efficient harvesting | 14 |
| Four drum combining with Opti-Thresh™ | 16 |
| Quick and easy adaptation to all crops | 18 |
| A steady flow of clean grain | 20 |
| High volume grain management | 22 |
| A professional way to deal with chaff and straw | 24 |
| Powerful, respect, for you, for your farm, for the future | 26 |
| New Harvest Suite™ Deluxe cab | 28 |
| New Holland Connectivity | 30 |
| New Holland Aftersales Products and Services | 32 |
| Specifications | 34 |

A combine for every field

The award winning Ultra-Flow™ staggered drum is now available on both CX5 & CX6 models, improving threshing performance. The proven Triple-Clean™ and self-levelling Smart Sieve™ cleaning system – which operates on slopes of up to 25% - is now matched to the Opti-Speed™ variable speed strawwalker system. Proven in the higher capacity CX7 and CX8 combine models, Opti-Speed automatically adjusts the speed of the strawwalkers both up and down slopes to deliver productivity improvements of up to 10% in hilly areas. The CX5.90 Hillside model offers side hill correction of up to 38%.

All models are offered with a choice of headers to include High Capacity and Varifeed™ grain headers of up to 9.15m. For maize, five, six and eight row maize headers are available.



- **1952:** Europe's first self-propelled conventional combine harvester rolled off the Zedelgem production line. The face of harvesting changed forever.
- **1970:** another harvesting revolution occurred: the advent of the rotary separator on the 1550 range. Forty years on, this technology is still used in flagship conventional combines today.
- **1977:** 8000 series was the first to benefit from six strawwalker technology. Cab comfort, a reversible auger drive, Roto-Thresher™ for processing tailings and a double cascade cleaning shoe significantly upped the performance stakes.
- **1994:** the TX60 developed up to 325hp and could be equipped with a mighty 9.14 metre header with lateral float technology.
- **2001:** the sleek lines of the CX700 and CX800 range were first unveiled. The benchmark Harvest Suite™ cab was an immediate hit thanks to outstanding visibility and ergonomic excellence and this range was the first to offer PLM compatibility.
- **2013:** Opti-Speed™ auto adaptive variable speed strawwalkers are introduced on the CX7000 and CX8000 Elevation range. Tailored separation performance further enhances harvesting quality and productivity.
- **2020:** launch of the new CX range with all new, optional, Agritechnica silver award winning Ultra-Flow™ staggered threshing drum technology which enhances capacity, reduces fuel consumption and blockages and makes for quieter and more efficient harvesting.



Built in Plock

CX series combines are manufactured in Plock, Poland. Today, the Plock plant, builds not only CX combines, but also CH and TC combines, high capacity and Varifeed™ headers plus fixed and variable chamber round ballers: a true New Holland centre of excellence. Across every product line, this is a facility that takes pride in its products, blending the extensive knowledge of its dedicated workforce with sophisticated manufacturing processes and the latest design technology to build today's machines.



The new CX5 & CX6 range

The four-model New Holland CX5 & CX6 strawwalker combine series offers a specification choice to exactly match specific end user demands. Available with 600mm diameter, 4 drum threshing technology, these five and six-straw walker combines benefit from a host of developments to boost productivity in more demanding terrain.

Improved threshing performance, Fuel efficient and clean running power units and a wide range of headers available for all models help to deliver productivity improvements of up to 10% in hilly areas.

New Holland. Specification choice to match specific end user needs.

Versatility comes as standard

New Holland CX5 & CX6 match stylish looks with practical features to ease maintenance, enhance visibility and make cleaning and storage easier. The Harvest Suite™ Deluxe cab now features darker interior colouring to reduce glare and provides even greater levels of operator comfort too. Less visible are the detail changes to reduce downtime.

There are now fewer grease points and the Auto-clean out function speeds swapping between different crops in the field, further enhancing the crop to crop flexibility. With New Holland, beauty is more than skin deep.



Excellent capacity Best-in-class versatility
See page 08



Enhanced crop flow for more efficient harvesting
See page 14





New Harvest Suite™ Deluxe cab
See page 28

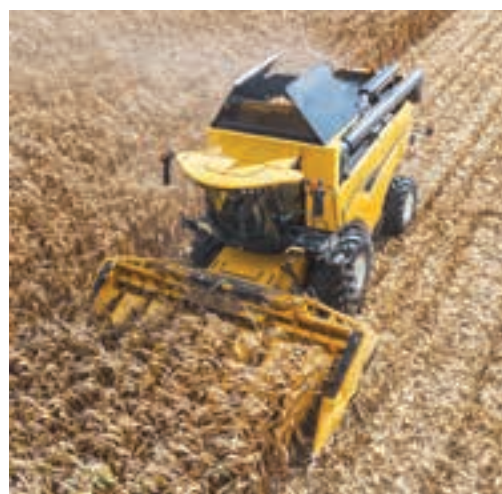
New Holland Aftersales Products and Services
See page 32



Excellent capacity Best-in-class versatility

New CX5 & CX6 combines deliver outstanding field performance. The award winning Ultra-Flow™ staggered drum is now available on both CX5 & CX6 models and improves threshing performance, with smoother crop flow, quieter operation, reduced fuel consumption and increased capacity. Overall cleaning capacity has been greatly enhanced thanks to the innovative Triple-Clean™ cascaded system, which can provide a 15% increase in performance across the cleaning shoe.

Crop-to-crop flexibility has never been better thanks to easily replaceable concave sections. Furthermore, an easy to use choice of crop-specific settings fine tune your CX combine for optimum performance in any crop or crop condition. A wide choice of grain and corn headers ensure maximum combine versatility.





Engines

Power comes from proven NEF or Cursor engines compliant with the Stage V emission standards. Fuel efficient and clean running, the power units develop maximum power outputs of 258hp - 340hp at a modest 2000rpm. In undulating terrain, these versatile combines have the power and specification to deliver level-land productivity and cleaning performance.

For those that operate in more demanding terrain, CX5 & CX6 Laterale models offer slope correction of up to 18% on both sides. The CX5.90 Hillside model offers side hill correction of up to 38%.

Ultra-Flow™ staggered drum

The award winning Ultra-Flow™ staggered drum is now available on both CX5 & CX6 models, improving threshing performance. The proven Triple-Clean™ and self-levelling Smart Sieve™ cleaning system – which operates on slopes of up to 25% - is now matched to the Opti-Speed™ variable speed strawwalker system. Proven in the higher capacity CX7 and CX8 combine models, Opti-Speed automatically adjusts the speed of the strawwalkers both up and down slopes to deliver productivity improvements of up to 10% in hilly areas.

Capacity on steep slopes

For sustained performance in hilly conditions, the CX5.90 and CX6.90 models are available in a “Laterale” versions. A simple and robust automatic levelling system provides a transversal slope correction of up to 18% on both sides. The Laterale system is in addition to the standard Triple-Clean™, self-levelling Smart Sieve™ and Opti-Speed™ straw walker speed control.

The result? Optimised cleaning efficiency over difficult terrain.

Hillside harvesting

For a professional combine operation in severe hillside conditions New Holland offers the CX5.90 Hillside. Efficiency of the separation and cleaning sections is ensured by two independent hydraulic systems: one for the lateral slope correction and one for the longitudinal corrections.

Safety and field efficiency are increased as the traction wheels remain vertical. A powerful engine producing a maximum power of 313hp, the heavy-duty hydrostatic transmission and the large disc brakes ensure optimum performance in the field.

Hillside combines are also available in a narrow version with a maximum overall width of 3.5m.

A perfect start

A powerful crop flow from the very beginning: the large diameter reel, with easy reel adjustments, the aggressive knife action and the retractable fingers over the full intake auger width, ensure consistent crop feeding right from the start. No valuable time is wasted with the quick header coupling system and the trouble-free clearing of blockages.



Saving valuable seed

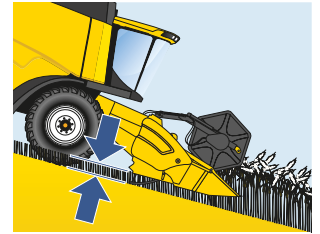
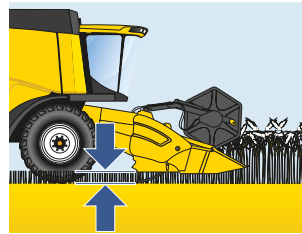
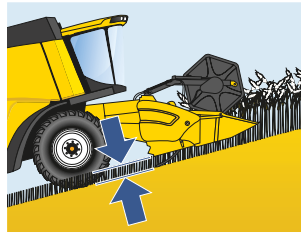
The new hydraulic vertical knife prevents the aggressive pulling apart of the crop and reduces seed loss to a minimum.

When not required they can be stored conveniently on the header frame.

Operator peace of mind

Automatic Header Height Control allows a choice between stubble height control or header height compensation.

The lateral float system takes care of correct transverse header positioning in uneven fields. For increased operator convenience, lateral float and Autofloat™ II systems operate automatically.



Autofloat™ II system

Autofloat™ II system corrects the “exaggerated weight signal” for maximum header positioning accuracy in rolling field conditions.

Header bulldozing is avoided when working downhill and maintains correct stubble height when working uphill.



Header trailers

Available for Varifeed™ headers from 7.62m – 8.5m, the new range of four wheel-steer New Holland header trailers offer security, stability and ultimate manoeuvrability at speeds up to 40kph.

Self-aligning locating brackets and a secure and reliable locking-pin system ensure minimum downtime when detaching the header. An optional large lockable storage box and on board spare wheel complete the package.

Heavy-Duty Varifeed™ grain headers

The knife position on the Varifeed™ grain header is adjustable to work with the optimum header configuration in any particular crop.

The fore-aft adjustment reach of 575mm allows ideal knife positioning and ensures top cutting efficiency and correct feeding. The electro-hydraulic adjustment is made from the cab and the header bottom is closed in all knife positions.







A perfect match

New Holland has developed a five, six and eight-row maize header line-up which has been engineered by design to perfectly match the CX5 & CX6 operating profile.

Following extensive field testing, both the rigid and flip-up versions deliver improved harvesting productivity and reliability.

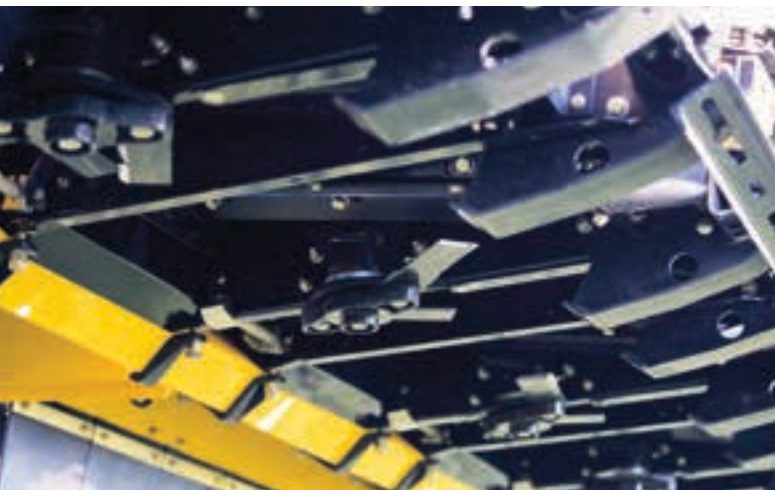
Modern maize headers for modern maize farming

Upgraded maize header offering satisfies modern demands and boost productivity and harvesting efficiency. Shorter points better follow ground contours to prevent 'run-down' of valuable crops.

The gills direct any loose kernels to the back of the header minimising waste. Replaceable wear strips extend the headers lifespan and all points flip up on self-supporting gas struts for easy cleaning and maintenance.

Row guidance boosts field performance

Minimise operator stress and increase productivity with the Automatic Row Guidance system. Digital sensors within the Auto Row Guidance system continuously monitor the combine's position and keep it on track for accurate harvesting. Accurate row following reduces cob losses and increases profitability.



Stalk Stomper tyre protection

An optional Stalk Stomper kit is now available for fixed or flip-up maize headers. Mounted on the header frame, the spring-loaded Stalk Stomper skids flatten the stubble in front of the wheels.

Uneven tyre wear and the likelihood of punctures is significantly reduced.

Enhanced crop flow for more efficient harvesting

The CX5 & CX6 feed elevator features four chains with connecting slats for improved, continuous crop flow. From the Varifeed™ header through the elevator to the drum, a continuous crop flow is produced. This ensures bunching of crop in difficult conditions is greatly reduced, for more efficient throughput.





Front face adjustment

Available on 6 strawwalker models, the new front face adjustment system allows the cutting angle to be adjusted mechanically to suit different headers or crops for optimised feeding.



Unblocking in a matter of seconds

Header blockages are instantly cleared by the hydraulic reversing system. The entire header and elevator can be 'rocked' backwards and forwards to effectively unblock the machine for minimum downtime and maximum harvesting uptime.

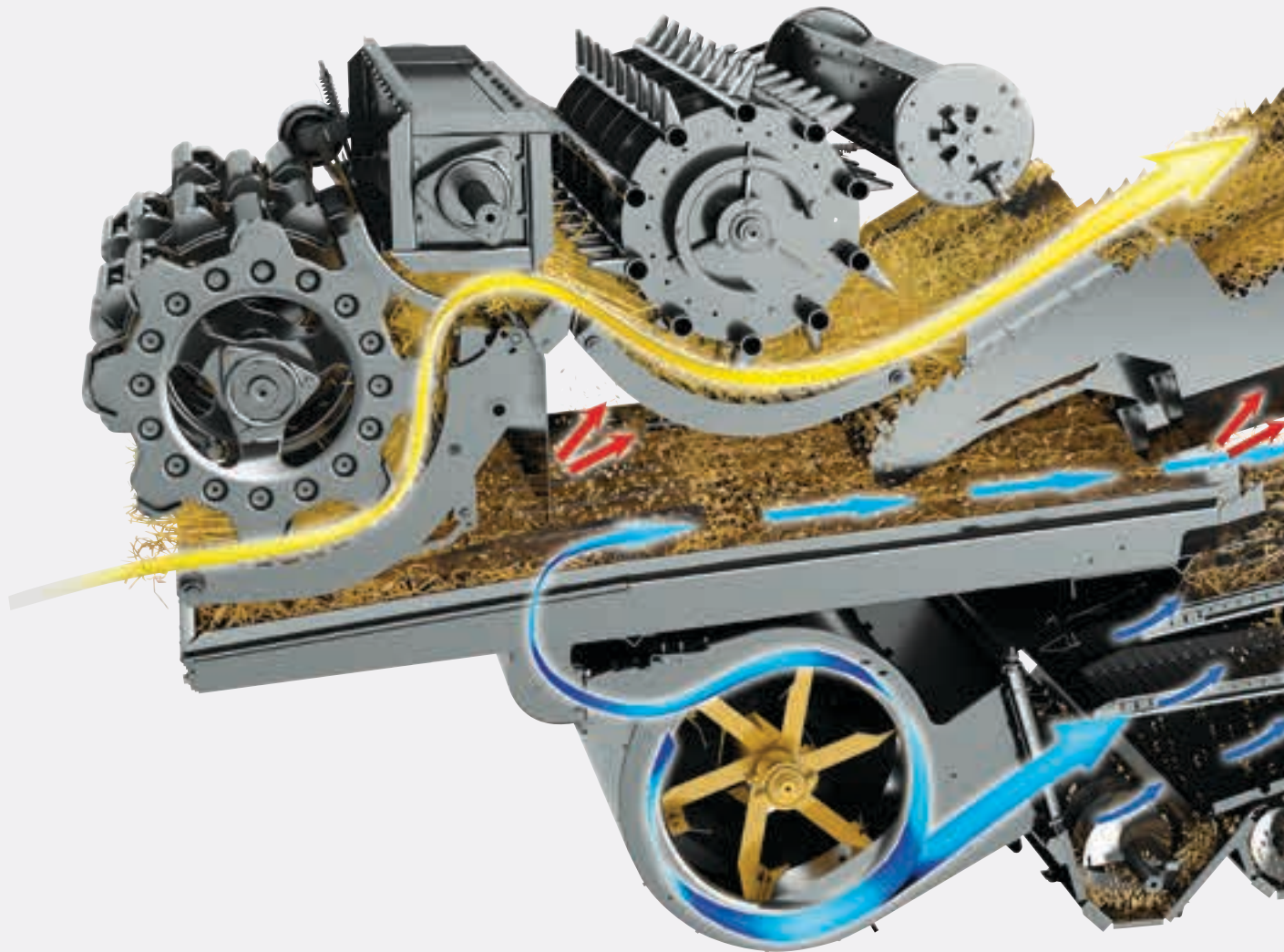


Non-stop stone protection

The mechanical stone protection system simply knocks the stones into a dedicated trap before they reach the threshing drum. This on-the-go system means zero slowdown during intensive harvesting days.

Four drum combining with Opti-Thresh™

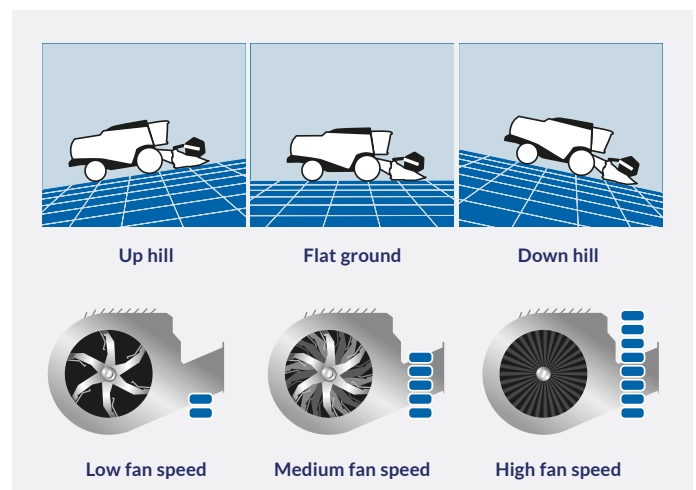
New Holland CX5 & CX6 combine models are offered with the four-drum Opti-Thresh™ that includes a Rotary Separator and Straw Flow™ beater. Opti-Thresh adapts to suit a wide variety of crops and conditions, boosting productivity without compromising kernel or straw quality. The design of the adjustable plates on the beater has been improved to further enhance raking of straw from the drum with reduced kernel damage.

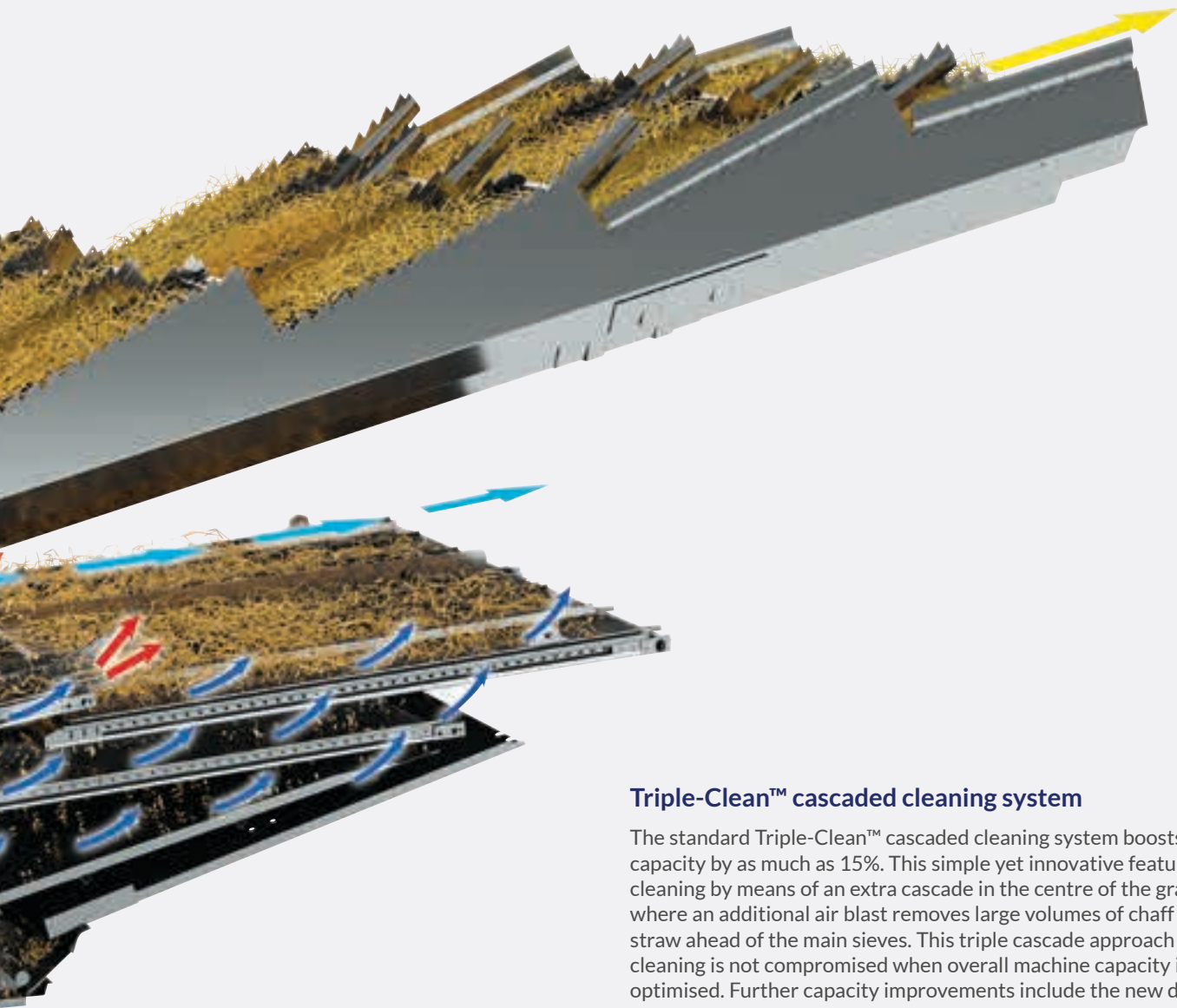


Smart Sieve™ and Opti-Fan™ really is smart

The Smart Sieve™ system automatically adjusts the sieve action to compensate for side slopes, increasing lateral movement to guide the grain so it lies in an even layer across the sieve.

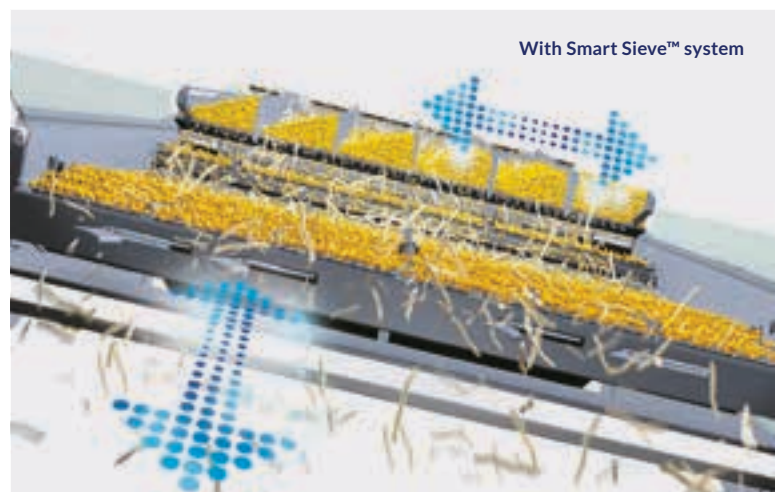
The award-winning Opti-Fan™ system corrects fluctuations in the speed of grain flow across the cleaning shoe. Whether working up-hill or down-hill, the fan speed automatically adapts to the direction and to the degree of the slope, increasing overall cleaning efficiency by up to 30% in heavy conditions.





Triple-Clean™ cascaded cleaning system

The standard Triple-Clean™ cascaded cleaning system boosts cleaning capacity by as much as 15%. This simple yet innovative feature enhances cleaning by means of an extra cascade in the centre of the grain pan, where an additional air blast removes large volumes of chaff and short straw ahead of the main sieves. This triple cascade approach ensures cleaning is not compromised when overall machine capacity is being optimised. Further capacity improvements include the new double flight cross auger which transfers grain to the elevator faster and can result in a 10% increase in throughput of the grain elevator system on 6 strawwalker models.



Quick and easy adaptation to all crops

Adding to their extreme versatility, New Holland CX5 & CX6 combine models have a broad range of adaptation possibilities that ensure outstanding performance in any number of crops and crop conditions. These avoid the need for compromise on grain or straw quality. The ease of adapting the machine from one crop to another is outstanding.



Standard sectional concave: easy to manage, quick to change

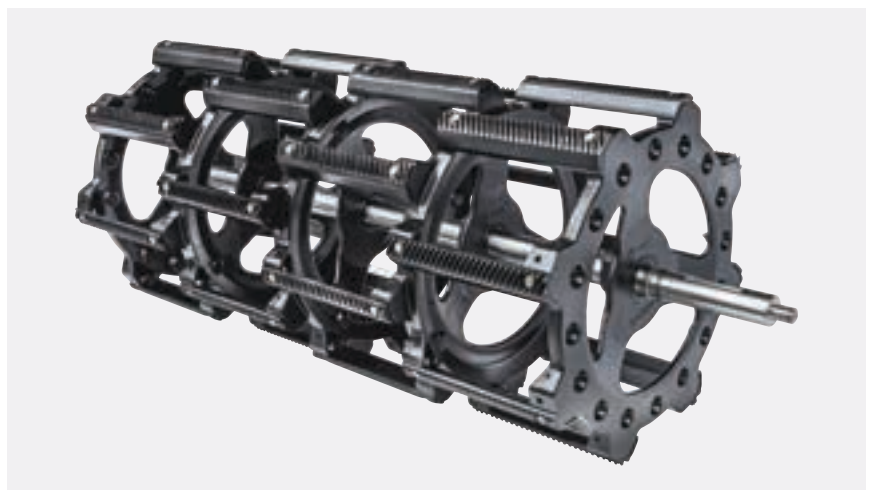
Reducing the rebuilding time from 6 hours to 20 minutes! When switching from one crop to another, without removing the straw elevator, the lower concave sections can be replaced.

Easy adjustments

Opti-Thresh™ top concave section & the Multi-Thresh™ Rotary Separator concave adjustment handles are accessible on the right hand side of the machine. Also the drive belt tensioner, for changing the Rotary Separator speed, is easily accessible.

Ultra-Flow™ staggered drum for more efficient threshing

The Ultra-Flow™ staggered drum option, developed by New Holland to enhance overall threshing performance, is now available on both CX5 & CX6. The sectional drum features offset rasp bars which are suitable for all small grains and can be configured to work with maize. This system makes for smoother crop flow, resulting in lower in-cab noise, reduced fuel consumption and a lower instance of blockages. Capacity is improved by up to 15% and is delivered within an even more durable package.





Standard drum, standard rasp bars & small grain sectional concave frame: suitable for small grains, maize and pulses.



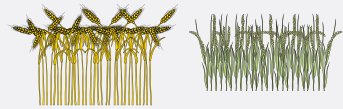
Universal drum, standard rasp bars & small grain sectional concave frame: heavy duty high-inertia drum suitable for small grains, maize and pulses, and heavy straw conditions.



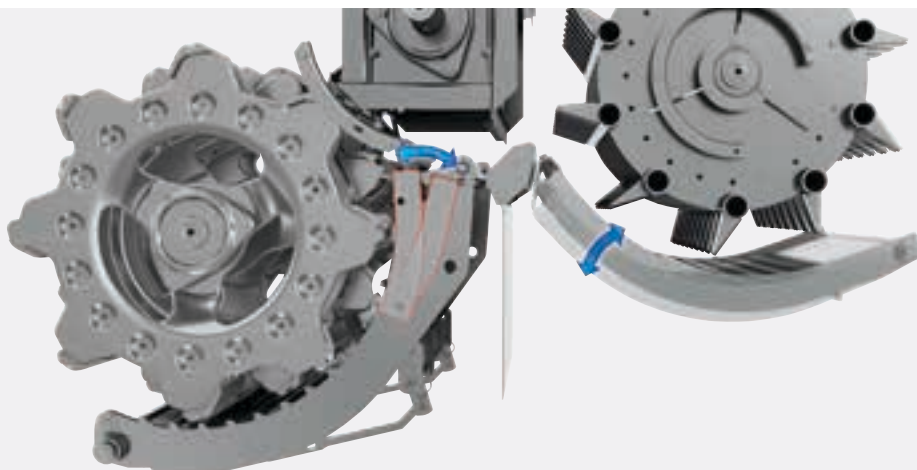
Ultra-Flow™ drum, staggered rasp bars and small grain or round bar concave frame suitable for small grains, maize and pulses.



Universal drum, rice rasp bars & rice sectional concave frame: suitable for rice.



Universal drum, standard rasp bars & rice sectional concave frame: suitable for small grains and rice.



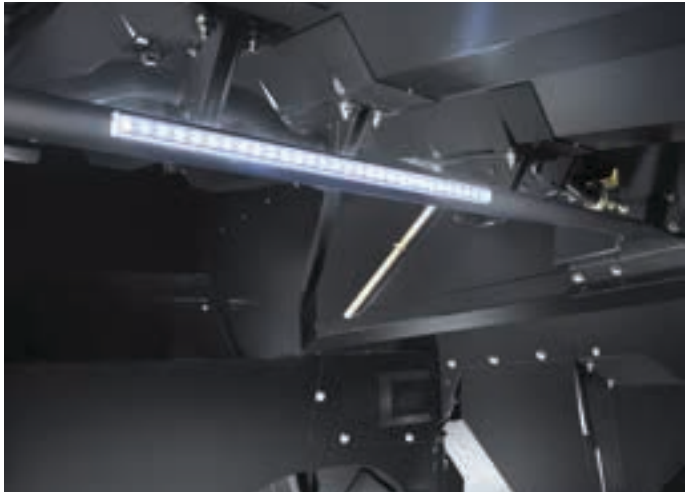
Opti-Thresh™ and Multi-Thresh™ systems

Adapting to grain maturity and yield can be done with the Opti-Thresh™ system by repositioning the rear part of the concave. Different cereal varieties or varying degrees of crop moisture can be matched thanks to the Multi-Thresh™ system with two adjustment positions of the Rotary Separator concave.

A steady flow of clean grain

The cleaning efficiency of the New Holland CX5 & CX6 combine models matches their high threshing and separation capacity. Large adjustable sieves, moving in opposite directions, and a powerful fan delivering an even distribution of air, are complemented by ingenious extra features: the Triple-Clean™ cascaded cleaning system, the Smart Sieve™ concept that virtually eliminates side slope effects and the award-winning Opti-Fan™ system that adapts the air flow to the longitudinal slope of the combine.





LED light

Available as standard, the new LED light aids the operator when inspecting the cleaning shoe, day and night.



Fingertip control

For maximum cleaning efficiency in varying crop conditions, adjusting the sieves can be done from the cab.



Easy grain pan removal

Maintaining the aggressiveness of the grain pan steps in difficult crops like rape seed or maize may require regular cleaning. The CX combine's grain pan can be removed from the front

High volume grain management

High unloading rates reduce time loss to a minimum. Unloading into even the highest type of grain trailer is easy, the over-top unloading system featuring a choice of 4.75m, 5.50m and new 6.40m unloading auger lengths. Excellent visibility of the unloading auger ensures smooth and uninterrupted harvesting when unloading on the move. High grain tank capacities deliver increased field autonomy.



High capacity, complete filling

The powerful bubble up auger ensures the entire capacity of the grain tank can be completely filled with no wasted space.

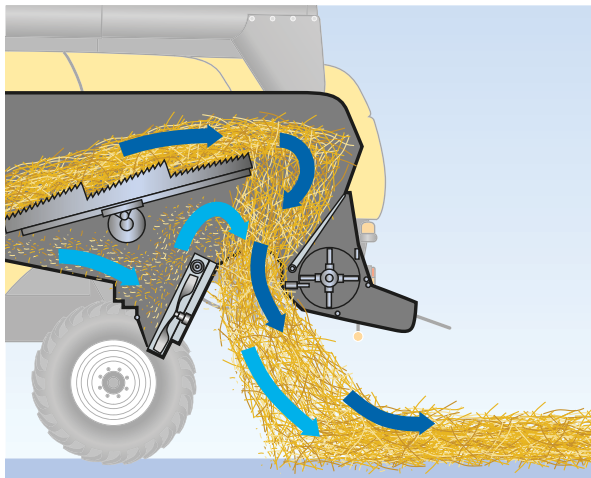




A professional way to deal with chaff and straw

High quality straw, ideal for baling is the result of the wide range of adjustment possibilities. In situations where the straw is chopped, the correct management of residue is important, especially where reduced tillage methods are practiced.

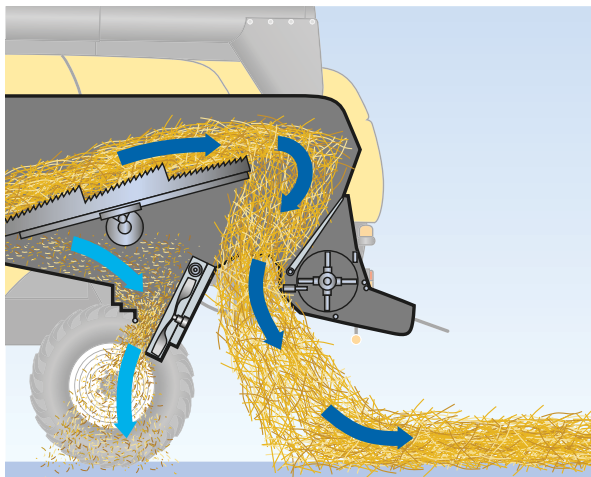




High quality bales with good bedding characteristics

The unbroken straw found in the swath of a CX5 & CX6 combine is the result of the low threshing aggressiveness.

The new straw hood has adjustable rakes which allow control of the swath width.

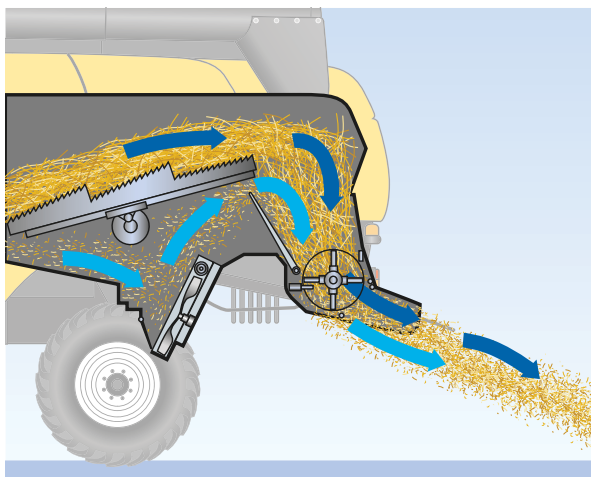


Three-way residue management: in the swath or on the stubble

The twin-disc chaff spreader spreads the chaff onto the stubble before the straw hits the ground. Straw feed value can be increased by directing the chaff into the straw to be baled.

A chaff blower can mix the chaff into the straw to be chopped for distribution together with the chopped straw.

The chaff spreader has adjustable deflector plates to fine tune the spread width to the header size and achieve uniform chaff distribution.



No escape: uniform straw chopping

Dual-Chop™ straw chopper includes an extra rake preventing long straw from escaping.

Repeated cutting of these stems ensures very uniform chopping

Powerful, respect, for you, for your farm, for the future

The CX5 & CX6 combines benefit from the productivity enhancing features of FPT Industrial Nef and Cursor 9 engines, equipped with ECOBlue™ HI-eSCR 2 technology for Stage V compliance. The proven ECOBlue™ technology uses AdBlue to transform the harmful nitrogen oxides contained in the exhaust gas into harmless water and nitrogen. This after-treatment system is separate from the engine which means the engine only breathes clean, fresh air. This results in clean running power units that offer improved performance and enhanced fuel economy.



AdBlue with no added hassle

AdBlue is a key component of the ECOBlue™ HI-eSCR 2 system and is a water and urea mix that is added to the exhaust gases to make them harmless. Fill the AdBlue tank half as often as your diesel one. Available through your New Holland dealer, you will be able to store AdBlue on your farm in a container size that suits your needs.



Larger rear wheels and ultra low ground pressure

New large steering wheels are available offering ground pressure as low as 1.2 bar and increased flotation and rolling ability in tough conditions. A wide range of tyres can be specified to suit your individual needs.



Power saving drivelines

Low power consumption and ultimate reliability are the result of proven, direct drivelines and the 3-speed hydrostatic transmission. All combines are constructed on an extremely robust frame, with superior material specifications, in line with Zedelgem tradition.



Saving fuel during road travel. New road cruise mode

For optimal fuel consumption, an automatic engine speed reducer adjusts engine rpm when travelling on the road.

New Harvest Suite™ Deluxe cab

Purpose developed for CX5 & CX6 combines, the new Harvest Suite™ Deluxe cab is 200mm wider and more spacious, an adjustable steering column and smaller steering wheel delivering improved ergonomics and even better visibility over the header. Additional work lights are standard, with detail improvements to include full-width hand rails over the front of the combine to facilitate cleaning through to new control buttons, two USB ports and an optional heated floor mat. Job data recording is now possible via the onboard printer option. The cab volume has increased to 3.7m³ and boasts 6.3m² of glass, and you can enjoy all that space in the peace and quiet of the near silent 73dB(A) cab.



Air suspended seat

The standard wide cloth trimmed seat provides exceptional features like the adjustable headrest, and ensures all operators will stay comfortable throughout the longest harvesting day.



Please, take a seat

New Holland brings to you the best-in class seat offering, with two different models providing you with a comprehensive choice. All seats benefit from improved cushioning. These firmer, more durable seat cushions provide outstanding comfort whatever the terrain.

Just touch the screen

Providing information on performance data, operational statistics and service data, the IntelliView™ IV monitor adds to optimising the combine's performance. The wide touchscreen is easy to use. One of the many time saving features available is the automatic crop setting function, whereby a specific combine setting can be stored for repetition when the same field situation pops up again.

Modern styling

The new CX5 & CX6 feature the latest New Holland styling with an emphasis on the operator environment. For your comfort and safety, our engineers completely redesigned the platform for safe and easy cab access.

Exceptional lighting

The impressive CX5 & CX6 lighting package is once more upgraded with completely new set of road lights integrated in a new cab chin skirt design. Designers incorporate the eye brow feature above the Road lights, reminiscent of the CR11 design. The spread of light has been engineered for maximum visibility of the entire header and the field ahead.

Air suspended seat Deluxe

The optional cut and sewn cloth trimmed seat with two heating level and active ventilation is perfect for the hottest days and the coldest nights, and features fore/aft movement.

New Holland Connectivity

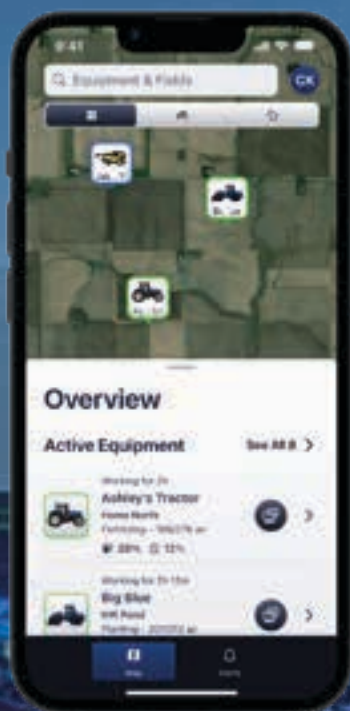
Telematics, integrated yield and moisture sensing

FieldOps™ enables you to connect to your CX5/6 from the comfort of your office via the mobile phone network. Keep in touch with your machines at all times, and even send and receive real-time information that saves time and enhances productivity. FieldOps™ offers full machine monitoring and control.

In short, FieldOps™ will help cut your fuel bills and improve fleet management and security in one simple package.



Overview



Equipment Detail



Map Applied



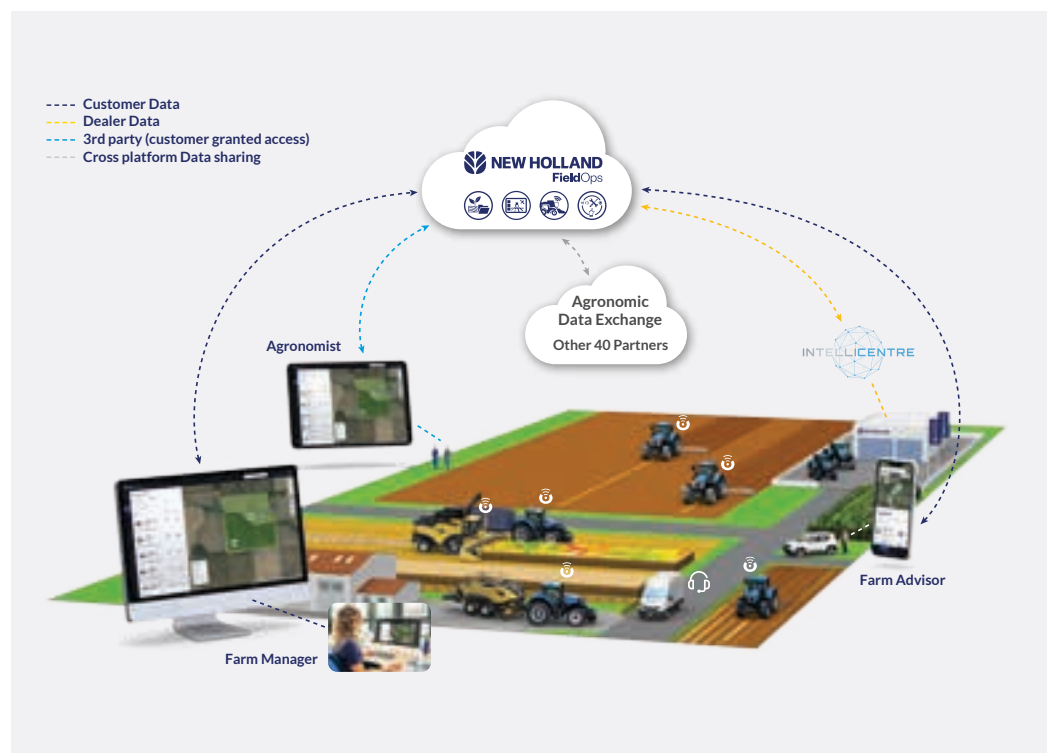
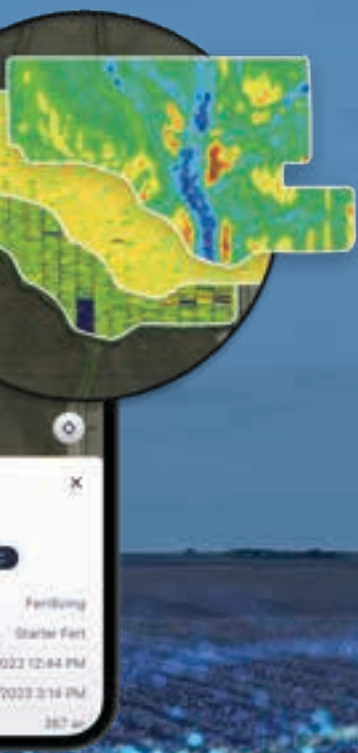


Real time data recording and sharing

The Farm tab on the FieldOps™ portal is where you can analyse all field data. This information is recorded in real time by your combine during harvesting and can be transferred over the air to FieldOps™ through telematics. Users of the FieldOps™ package will be able to transfer this data wirelessly via file transfer to enable seamless analysis of field operations.

FieldOps™ digital farming

The FieldOps™ portal and app enable you to register and manage your equipment, access dedicated documents, training and services, and on-hand support, including Uptime Support, in one place. With FieldOps™ you can access the FieldOps™ Telematics portal for real-time fleet and machine visibility, analyse agronomic data through file sharing, together with productivity boosting services. As part of the Telematics package, the FieldOps™ allows for remotes screen viewing.



New Holland Aftersales Products and Services

In choosing New Holland you have made a quality choice. You are ready to start your journey with us and our network, counting on a wide range of quality products and professional services available and next to you season after season.

GENUINE PARTS

Top performance guaranteed at all times

Committed to keeping your machines in top condition for like-new performance, New Holland offers a wide range of Genuine Parts, manufactured to the same high standards and with the same high-quality components used in new machines.

Genuine Parts are the result of a certified supply chain and stringent tests on the conformity, the reliability and the durability, to ensure consistent high levels of safety and performance over time.



REMAN PARTS

Recommended for your ageing New Holland machine

Choosing the Reman range means embracing our circular product lifecycle approach with the certainty that the components fitted to your machine will be as efficient as new.

Thanks to the unrivalled know-how acquired over the last decades, New Holland is the ideal partner for such a complex and sophisticated industrial process, sustainably remanufacturing the essential components of your machine to the highest standards, guaranteeing as good as new quality at an affordable price.

ACCESSORIES

Tailored to your farming

Every day, New Holland implement solutions that make your machine unique and reliable, covering every single demand.

From safety to productivity, from comfort to power, the complete range of accessories is adapted to your specific activities, as single items or in kits set up by your New Holland dealer.

Ambra lubricants

With the right lubricants, you can protect your machine, minimise maintenance and downtime and boost your performance.

Ambra lubricants, engineered by Petronas specifically for New Holland machines, is our recommended choice.



GENUINE PARTS: whenever, wherever!

Choose from click & collect or doorstep delivery at MYCNHSTORE.



Get your parts on www.mycnhstore.com



GENUINE PARTS



UPTIME SERVICE

Developed by New Holland, Uptime Service is the new, professional and flexible Planned Maintenance Programme designed to make it easier for you to manage long term routine maintenance.

Planned Maintenance is a key factor to keep your equipment always in good shape, maximising the performance and the uptime through scheduled operations carried out by professional New Holland Dealer' technicians, using only genuine parts and lubricants.

UPTIME SUPPORT

In high season, our Uptime Support experts are ready to support 24/7 as soon as your assistance request is recorded.

Together with your New Holland dealer, we do everything possible to provide the quickest and most effective support, until the matter is fixed and you are back in your field! You can activate Uptime Support through the Top Service phone number or MyNH App.

Connected Services



New Holland FieldOps™ is the Telematics Portal to stay constantly connected with your equipment from the comfort of your office. With New Holland FieldOps™ you can monitor the locations and the usage of your fleets, manage precision farming operations, get the Dealer's remote support 24/7 and much more.

New Holland technicians operating in the Dealer's IntelliCentre, remotely monitor the connected machines preventing possible failures before they even occur.

UPTIME WARRANTY

With Uptime Warranty you are assured that all possible failures will be professionally fixed by specialised New Holland Dealer's technicians and you won't need to pay for anything, keeping operating costs under control.

Uptime Warranty is the New Holland extended warranty program offering maximum protection, minimum cost and highest resale value.

Included on CX5 & CX6



New Holland Uptime Pack - All the best services in one pack

Uptime Pack group together the best of New Holland aftersales services in different packages designed to maximise uptime, improve operational safety, keep costs under control and increase productivity. There are three levels of support for our customer: Uptime Pack Basic, Uptime Pack Plus and Uptime Pack Premium.



Farm with peace of mind



Maximise your uptime



Stay connected with your farming



Increase your productivity



New Holland Style

Want to make New Holland a part of your everyday life? Browse the comprehensive selection on www.newhollandstyle.com

A whole range of items are available including hard wearing work clothing and a vast selection of scale models, together with so much more. New Holland. As individual as you.

| Models | CX5.80 | CX5.90 | CX6.80 | CX6.90 |
|---|----------------|-------------------|-------------|-------------|
| Grain header | | | | |
| Cutting width: High Capacity grain header (m) | 4.57 - 7.32 | 4.57 - 7.32**** | 4.57 - 9.15 | 4.57 - 9.15 |
| Heavy Duty Varifeed™ grain header (575mm of knife travel) (m) | 4.88 - 7.62 | 4.88 - 7.62**** | 4.88 - 9.15 | 4.88 - 9.15 |
| High Capacity Hillside grain header (m) | - | 4.57 - 6.10 | - | - |
| MacDon FD2 FlexDraper® header (m) | - | - | 7.60 | 7.60 |
| MacDon D2 Rigid Draper® header (m) | - | - | 7.60 - 9.10 | 7.60 - 9.10 |
| Knife speed (cuts/min) | | | 1150 | |
| Spare knife and spare bolted knife sections | | | ● | |
| Feeding auger with full-width retractable fingers | | | ● | |
| Reel diameter (m) | | | 1.07 | |
| Maize headers | | | | |
| Flip-up maize headers (number of rows) | 6 - 8***** | 6**** - 8***** | 6*** - 8 | 6*** - 8*** |
| Rigid maize headers (number of rows) | 5 - 6 - 8***** | 5*** - 6 - 8***** | 6 - 8 | 6 - 8 |
| Remotely adjusted deck-plates | | | ● | |
| Integrated stalk choppers | | | ○ | |
| Rotary dividers | | | ○ | |
| Automatic row guidance | | | ○ | |
| Harvest Suite™ Deluxe cab | | | | |
| LED working lighting pack | | | ○ | |
| Standard cloth trimmed air-suspension seat | | | ○ | |
| Deluxe air-suspension seat | | | ○ | |
| Instructor's seat with removable coolbox (12V/220V) | | | ● | |
| IntelliView™ IV monitor | | | ● | |
| CommandGrip™ handle | | | ● | |
| Harvest Suite™ Deluxe cab glass area (m²) | | | 6.3 | |
| Up to 2 additional Viewing Camera's (on hitch & unloading tube) | | | ○ | |
| Single rear view camera (on straw hood) | | | ● | |
| Air-conditioning | | | ● | |
| Automatic climate control | | | ○ | |
| Heating | | | ○ | |
| Optimum cab noise level [dB(A)] | | | 73 | |
| New Holland Precision Land Management systems | | | | |
| Guidance systems | | | | |
| EZ-Pilot™ PRO compatible with IntelliView™ IV monitor | | | ○ | |
| Cruise Control mode | | | ● | |
| Automatic row guidance system for maize headers | | | ○ | |
| Precision farming | | | | |
| Moisture measuring | | | ○ | |
| Yield measuring and moisture measuring | | | ○ | |
| Full Precision farming package including: yield measuring and moisture measuring, DGPS yield mapping, desktop software and software support service | | | ○ | |
| Threshing drum | | | | |
| Width (m) | 1.3 | | | 1.56 |
| Diameter (m) | | | 0.6 | |
| Standard type / Universal type / Ultra-Flow™ staggered type | | | ● / ○ / ○ | |
| Number of bars | | | 8 | |
| Speed range (rpm) | | | 400 - 1140 | |
| Optional drum speed reductor (rpm) | | | 240 - 685 | |
| Concave | | | | |
| Quick-change sectional concave | | | ● | |
| Area (m²) | 0.86 | | | 1.04 |
| Number of bars | | | 14 | |
| Angle of wrap Opti-Thresh™ system open (°) | | | 85 | |
| Angle of wrap Opti-Thresh™ system closed (°) | | | 121 | |
| Beater | | | | |
| Four paddle / pins beater drum | | | ● / ○ | |
| Diameter (m) | | | 0.395 | |
| Beater concave area (m²) | 0.286 | | | 0.342 |
| Synchronisation with drum speed | | | ● | |
| Rotary Separator | | | | |
| Diameter (m) | | | 0.59 | |
| Speed (rpm) | | | 400 / 760 | |
| Quick speed change without tools | | | ● | |
| Concave area (including rake) (m²) | 0.84 | | | 1.01 |
| Multi-Thresh™ system | | | ● | |
| Total powered separation area (m²) | 1.988 | | | 2.387 |
| Straw Flow™ beater | | | ○ | |

| Models | CX5.80 | CX5.90 | CX6.80 | CX6.90 |
|---|---------|--------------|-------------|------------------|
| Strawwalkers | | | | |
| Number | 5 | | 6 | |
| Separation area (m ²) | 5.38 | | 6.45 | |
| Cleaning | | | | |
| Triple-Clean™ cascade system | | | ● | |
| Smart Sieve™ self levelling: cleaning system automatic kernel size adaptation | ○ | ○**** | ○ | |
| Side slope correction on Pre- and Top Sieve (%) | | | 25 | |
| Total area under wind control FS (m ²) | 4.321 | | 5.207 | |
| Levelling system | | | | |
| Optional Lateral slope levelling system (Side-Hill) (%) | - | 18 | - | 18 |
| Wide Hillside levelling system (Side-Hill / Up-Hill / Down-Hill) - overall width = 4.0m (%) | - | 38 / 30 / 10 | - | |
| Narrow Hillside levelling system (Side-Hill / Up-Hill / Down-Hill) - overall width = 3.5m (%) | - | 32 / 30 / 10 | - | |
| Cleaning fan | | | | |
| Opti-Fan™ system | | | ● | |
| Number of blades | | | 6 | |
| Variable speed range | | | 165 - 420 | |
| Optional Low (rpm) | | | 400 - 1000 | |
| Standard High (rpm) | | | | |
| Grain tank | | | | |
| Capacity / Hillside version (l) | 8300 | 8300 / 7300 | 9300 | |
| Central filling, folding bubble-up extension | | | ● | |
| New Holland engine* | | Nef (6.7L)* | | Cursor 9 (8.7L)* |
| Compliant with engine emissions regulations | | | Stage V | |
| ECOBlue™ HI-eSCR 2 system (Selective Catalytic Reduction) | | | ● | |
| Injection system | | | common rail | |
| Gross engine power @ 2100rpm - ISO 14396 - ECE R120 [kW/hp(CV)] | 175/238 | | 205/279 | 225/306 |
| Maximum engine power @ 2000rpm - ISO 14396 - ECE R120 [kW/hp(CV)] | 190/258 | | 230/313 | 250/340 |
| Approved biodiesel blend** | | | B20 | |
| Governor type | | | electronic | |
| Air compressor and air gun | | | ○ | |
| Fuel tanks | | | | |
| Diesel Capacity / AdBlue Capacity (l) | | | 670 / 110 | |
| Transmission | | | | |
| Gearbox | | | hydrostatic | |
| Hydrostatic Hytron pump control | | | 3-speed | |
| Cruise Control mode | | | electronic | |
| Powered rear wheels | | | ● | |
| Maximum speed (kph) | | | ○ | |
| | | | 30 | |
| Residue management | | | | |
| Dual-Chop™ straw chopper | | | ○ | |
| Dimensions | | | | |
| With traction wheels***** | | | 710/75-R34 | |
| Maximum height in transport position (m) | 3.930 | 3.990**** | 3.990 | |
| Maximum width - transport (m) | 3.275 | 3.265**** | 3.500 | 3.500*** |
| Weight | | | | |
| Standard version less header and less straw chopper (kg) | 12300 | 12400 | 13200 | 13400 |
| Hillside version less header and less straw chopper (kg) | - | 14000 | - | - |
| Lateral version less header and less straw chopper (kg) | - | 13900 | - | 14700 |
| Maximum towable mass (kg) | | | 5500 | |

● Standard ○ Optional - Not available

* Developed by FPT Industrial ** Biodiesel blend must fully comply with the latest fuel specification EN14214:2009 and operation is in accordance with operator manual guidelines

*** Not available on Lateral versions **** Not available on Hillside version

***** Traction wheels other than those mentioned are also available, depending on the market (620/75-R30; 320/75-R34; 800/65-R32; 900/60-R32; 30.5x32; 1050/50-R32)

***** Only in combination with specific tyre size and on flat field conditions





New Holland prefers **Ambra** lubricants



www.newholland.com/uk - www.newholland.com/ie



The data indicated in this folder are approximate. The models described here can be subjected to modifications without any notice by the manufacturer. The drawings and photos may refer to equipment that is either optional or intended for other countries. Please apply to our Sales Network for any further information. Published by New Holland Brand Communications. BTS Adv. - Printed in Italy - 04/26 - (Turin) - 242004/INB