

D-SERIES CRAWLER EXCAVATORS
CX750D / CX750D ME
STAGE V

CASE
CONSTRUCTION



IT'S TIME
FOR MORE

www.casece.com
EXPERTS FOR THE REAL WORLD
SINCE 1842

HERITAGE

A TRADITION OF INDUSTRY FIRSTS



EXPERTS FOR THE REAL WORLD

SINCE 1842

1842 CASE is founded.

1869 The first CASE portable steam engine - road construction is born.

1957 The first factory - integrated loader/backhoe in the world: a CASE industry first.

1969 CASE begins skid steer loader production.

1992 Sumitomo becomes supplier to CASE Corporation distributing excavators ranging from 7 to 80 tons.

1998 Global Alliance signed

between CASE Corporation and Sumitomo.

2001 CASE introduces the first of its CX excavators, powerful new "thinking machines" designed to enhance productivity through onboard intelligence features.

2007 CX210B is awarded the «Good Design Award» by the design Academy of Japan.

2008 CX210B wins the 18th «Energy Conservation Award» from the Agency for Natural Resources and Energy of the Japanese

Ministry of Economy.

2011 CASE becomes the first construction equipment manufacturer to offer both selective catalytic reduction and cooled exhaust gas recirculation as solutions to meet stringent emissions standards.

2015 CASE launches the new "D-Series" Tier 4 final/ EU Stage IV Crawler Excavators.

2018 Stage V production for models CX350D and above.

CRAWLER EXCAVATORS D-NA BUILT TO LAST AND CONTROL



HIGH RELIABILITY

Improved D-esign for D-urable performances

- The boom and arm have been redesigned according to the latest stress analysis criteria to reduce stress points.
- The undercarriage is built with high-tensile strength steel for long term durability to work in the toughest heavy duty applications.

HIGH QUALITY

Accurate, simple and robust design for high durability

- True to CASE's enviable reputation for reliability and durability, the D-Series delivers leading design solutions and manufacturing quality.



HIGH PRECISION AND CONTROLLABILITY

Smooth control with the CASE Intelligent Hydraulic System

The proven CASE Intelligent Hydraulic System (CIHS) delivers energy savings in all cycle time phases (digging, boom up and swing, dumping).

D-SERIES CRAWLER EXCAVATORS



CX750D ME MASS EXCAVATOR

A dedicated model for mass excavation provides outstanding breakout force performance. With a special heavy duty shorter boom and dipper and a bigger bucket cylinder and optimized kinematics, the CX750D ME works with larger buckets than the CX750D, delivering industry leading speed, productivity and efficiency.



FAST CYCLES

High performance hydraulics control

- The new electrically controlled pumps deliver faster cycle times.
- Oil flow can be adjusted according to working needs, or increased smoothly while starting travel and boom down.
- As a result, the machine responsiveness to operation load is multiplied, resulting in cycle times 11% faster than the previous generation.



HIGH VERSATILITY

Working modes easily adapt to every work load

- A** MODE for grading, lifting and precision work.
- H** MODE the best balance between productivity and fuel economy.
- SP** MODE extra speed and power for the most demanding jobs that require maximum productivity.

Auto Power Boost automatically increases hydraulic pressure according to the operation's demands.

Optimized retractable undercarriage

Increased track gauge width (3350 mm) for better lifting capacity.
Width with retracted condition during transportation is 2740 mm.

PRODUCTIVITY

IT'S TIME FOR BIGGER PERFORMANCE



HIGH EFFICIENCY: THE SECRET

Great performances with low fuel consumption

CASE Intelligent Hydraulic System (CIHS) reads continuously the load pressure through strategic sensors and like an ORCHESTRA DIRECTOR gives always and in real time the right balance for any type of job, providing solid fuel saving opportunities. It consists of 5 Energy Saving controls:

- Torque control decreases main pump loads to prevent a drop in engine rpm, with improved sensitivity to control.
- Boom Economy Control (BEC) increases fuel efficiency during boom lower and swing operations, like dump unloading
- Swing Relief Control (SWC) carefully manages the hydraulic power distribution in slewing operations.
- Spool Stroke Control (SSC) creates an automatic pressure adjustment during digging and leveling operations.
- Idle functions: the Auto Idle function lowers engine rpm after 5 seconds of lever inactivity whatever the throttle position, while the Idle Shutdown function shuts the engine down after a pre-setted time of inactivity. Both are manually switchable.



CLEANER (STAGE V)

EU Stage V compliant CASE engines

- The new STAGE V engine meets the latest EU standards for engine exhaust emissions that sets new limit for particle number (PN) and further reduced particulate matter (PM) levels.
- Water separator sensor linked to a dedicated message on machine monitor to drain water when level in filter is too high
- New safety filter (maintenance free) to protect the engine from dust during the main filter replacement
- The closed circuit ventilation system make sure the oil gas are filtered, separated and sent back to the crankcase, avoiding dispersion into the air.
- Engine of the latest generation, electronically controlled with Variable Geometry Turbocharger, high pressure common rail with multi-injection engine ensures great performances and low fuel consumption.
- Large AdBlue tank allows longer working time without stopping for AdBlue refill (5-6 fuel refills before a stop). With CASE no time is wasted and your refill is more efficient and safe.

D-SERIES CRAWLER EXCAVATORS



COMFORTABLE AND SAFE CAB

The ultimate interior cab configuration

- Superior cab structure with ample legroom for the operator.
- Fully adjustable workstation.
- New ergonomically designed high back seat with air suspension for excellent comfort, plus seat tilting adjustment and seat heater.
- Top class features include the 178 mm colour LED monitor, Bluetooth tuner and DAB+ radio, spacious storage compartment, 12V accessory plug, clipboard holder, mobile phone holder, warm and cool box, fuse box service connection, storage tray and ergonomic arm rest.
- FOPS level 2 standard.
- Optional front guards level 1 and 2.



OUTSTANDING VISIBILITY & QUIET WORK ENVIRONMENT

- Outstanding visibility with ample glazed surface, right and rear camera
- Soundproof pressurised cab
- The cushioning system lowers noise and vibration levels for the operator's ultimate comfort.



COMFORT RULES FIRST CLASS CAB AND SEAT



D-SERIES CRAWLER EXCAVATORS



CASE MAXIMUM VIEW MONITOR

option with its bird's eye and panoramic view improves operator's safety by:

- 270° wide vision
- 3 cameras
- 7 inch full color monitor
- Blind spots eliminated by image processing
- Led lighting package LED lights for increased visibility in low light conditions



STANDARD HYDRAULIC REVERSABLE FAN

Engine layout inversion

- The new layout made it possible to accommodate two wider radiators with tank & oil cooler / fuel cooler in parallel location opposite side of the cabin assuring better cooling performance.
- The hydraulically-driven cooling fan contributes to lower noise output and improvements in fuel consumption. The reversing mode helps to reduce maintenance needs.



SAFETY AND MAINTENANCE

WORK SAFELY IN ALL CONDITIONS



SAFE ACCESS TO UPPERCARRIAGE

Solid and robust platform and handrails

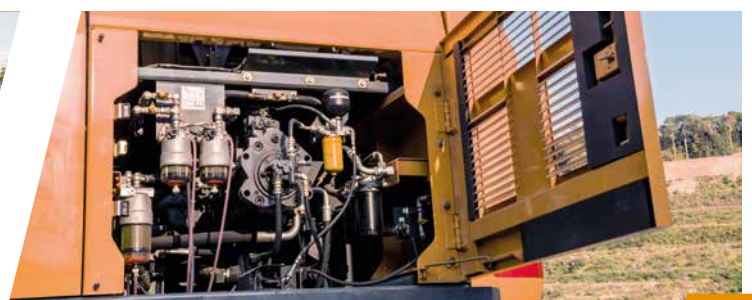
- Wide, robust and comfortable steps and ladders for safe access to the top of the hood.
- Solid handrail for protection on the top of the hood.
- Non-slip plates and top hood cover are supported by 2 gas pistons and secured by 2 mechanical stops when open.
- Solid platform (80 cm wide) on top of the engine compartment to provide a stable base for the technician working on the engine compartment.



EASY MAINTENANCE

CASE stays «grounded»

- All filters and regular fill points are grouped for easy access.
- Engine oil change intervals set at 500 hours.
- Radiator and cooler mounted side by side for easy access.
- Standard 100 l/min refueling pump with automatic cut off.
- Optional hydraulic and engine oil sampling port for easy oil check.
- Battery shutdown switch for safe maintenance on the electrical system.
- All the D-Series crawler excavators feature the Extended Maintenance System (EMS) bushings, providing 1,000 hour greasing intervals on all pins except the attachment linkage.



MAIN REASONS TO CHOOSE THE D-SERIES



THE SECRET FOR HIGH PRECISION AND CONTROLLABILITY

is the CASE Intelligent Hydraulics System (CIHS) which is the result of continuous pursuit of perfection of a legendary brand.

CASE is synonymous and reference in the market for its fastest cycles times, best energy saving performance and smooth control



HIGH VERSATILITY

- Mass excavation available (CX750D ME) for outstanding breakout force
- Wide track gauge (3350 mm) for better lifting
- Four arm lengths options



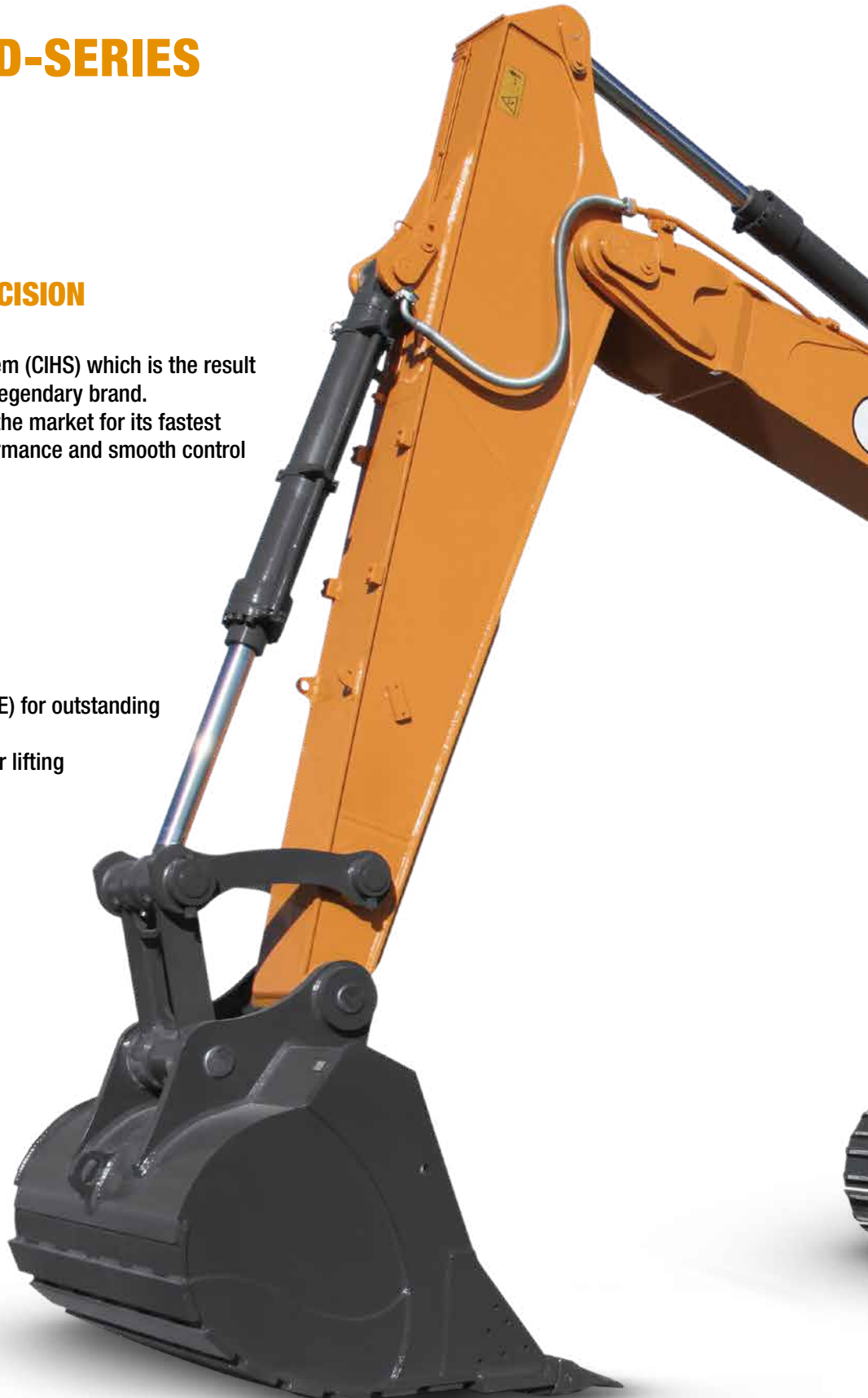
MORE EFFICIENT MUSCLE BEHIND

- 512 HP engine power
- Top class productivity without compromising fuel efficiency
- New electronically controlled hydraulic pumps for outstanding responsiveness (11% faster than previous series)



HIGH EFFICIENCY

- Energy saving system to take advantage of all fuel saving opportunities
- Large AdBlue tank (152 litres). Your refill is more efficient and safe
- Max torque value shifted to lower rpm (improved engine response)





HIGH RELIABILITY

- Arm, boom and undercarriage have been developed and improved year over year with best design elements and materials for more durability, dispersing stress concentration
- Standard hydrostatic reversible fan to match the real cooling demand, reducing power absorption and reducing maintenance needs thanks to the reversing mode
- Side by side radiators improve cooling and are easily accessible



BETTER VISIBILITY

- Standard rear camera
- Optional CASE maximum view monitor (270° rear & side view)
- New LED working light package more than three times brighter than its halogen equivalent



COMFORTABLE AND SAFE CAB

- Extra spacious cab
- Fully adjustable workstation
- New high back seat
- New layout of the power plant reduces cab inside noise (engine fan far from cab)



SAFE OPERATION AND MAINTENANCE

- All filters now located in the pump compartment
- Wider catwalk for a safer maintenance
- Optional factory fitted travel alarm for greater safety on the jobsite
- New fuel filter supply line with no need to flush after filter replacement
- Fuel prefilter water sensor with dedicated message on cabin monitor



STAGE V ENGINE

in line with the latest EU standard for engine exhaust emissions:

- New ATS with DPD filter (Diesel Particulate Diffuser)
- New closed PCV system (Positive Crankcase Ventilation)



THE SCIENCE BIT

The CASE SiteWatch telematics system uses a high-tech control unit mounted on each machine to collate information from that machine and from GPS satellites. This data is then sent wirelessly through the mobile communication networks to the CASE Telematics Web Portal.



SiteWatch: centralised fleet control benefits at your fingertips

Measure your true asset availability and optimise it

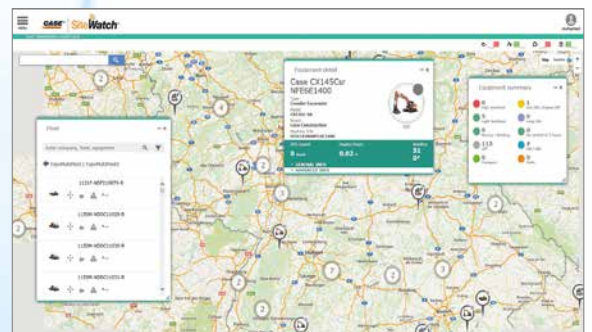
- Eliminate the “phantom fleet”: SiteWatch allows to identify spare units or under loaded machines on each site.
- Able to reallocate units where they are more needed.
- Maintenance planning is easier since the actual machine hours are available and alerts will be sent when a service is due.
- Extend the benefits of SiteWatch to the rest of your fleet: SiteWatch can be installed on the units of other brands as well.

Challenge your Total Cost of Ownership!

- Being able to compare the fuel usage of different machine types will allow you choose the right equipment.
- Save on transport costs with planned and grouped service interventions.
- Peace of mind, optimised uptime and lower repair costs: with preventive maintenance you can be alerted if the engine needs to be serviced and avoid a disruptive breakdown.
- Be able to compare your asset Return on Investment on different sites.
- Your equipment is used only during working hours. You can receive alerts when is in use during the weekend or at night.

More safety, lower insurance premium

- Keep thieves away: dissuade them from attacking your asset because it is geo-localised. SiteWatch is hidden so that thieves can't find it quickly.
- Geo-fencing your asset. You can define a virtual fence and receive an email when a machine exits that perimeter.
- Recover your asset if it is taken away, thanks to the asset's continuous tracking.



STANDARD AND OPTIONS

STANDARD EQUIPMENT

ENGINE

Isuzu 6-cylinder turbo-charged diesel
EU Stage V certified
Selective Catalytic Reduction (SCR)
Diesel Oxidation Catalyst (DOC)
Cooled Exhaust Gas Recirculation (CEGR)
Diesel Particulate Diffuser (DPD)
VGT turbocharger
Electronic fuel injection
High pressure common rail system
Neutral safety start
Auto-engine warm up, emergency stop
Glow-plug pre-heat
Engine Protection Feature (EPF)
Dual-stage fuel filtration
Dual element air filter
Remote oil filter
Green plug oil drain
500-hour engine oil change interval
24V system
Battery disconnect switch
External fuel and AdBlue gauges
Fuel cooler
Fuel filter restriction indicator
Fuel prefilter water sensor with dedicated message on cabin monitor
Idle start
Radiator, oil cooler, intercooler – protective screen
Hydraulic reversing cooling fan
Refueling pump

FUEL ECONOMY SYSTEMS

Engine Idle/Fuel Economy System:
Auto-idle
One-touch idle
Auto-idle shut-down
Torque control
Boom Economy Control (BEC)
Swing Relief Control (SWC)
Spool Stroke Control (SSC)

HYDRAULICS

Electronically controlled hydraulic pumps
Auto power boost
Auto travel speed change
Selectable work modes
Overload warning device
ISO pattern controls
Pre-set auxiliary pump settings
Manual lever for auxiliary selection outside cab
Auxiliary valve
Hydraulic filter restriction indicator
Oil cooler
5,000 hour hydraulic oil change interval
2,000 hour hydraulic filter change interval

UPPERSTRUCTURE

ISO mirrors
Handrail - RH access
Isolation mounted cab (fluid and spring)
Lifting eyes for counterweight
Lockable fuel cap, service doors and toolbox
Rear and side view safety camera

OPERATOR STATION

Catwalks
FOPS guard OPG level 2
Pressurized cab
Retractable roller screen provision
Tempered safety glass
One-touch lock front window
Sun visor&rain deflector
AC/heat/defrost w/auto climate control
Hot&coolbox, cup holder & ashtray
Interior dome light
Cloth covered air-suspension high-back seat
Sliding seat – 90 mm
Seat-belt
Adjustable armrests
Tilting consoles - 4-position
Low-effort joystick controls

Sliding cockpit 180 mm
Aux-in port for personal electronics
Multifunction LED color monitor (180 mm)
26 selectable languages for monitor
Anti-theft system (start code system)
Rubber floormat
12V electric socket
24V cigarette lighter
One-piece right hand window
Windshield wiper / washer
Storage compartments
On-board diagnostic system
Travel alarm
DAB+ radio with antenna and 2-speakers
9 LED work lights (2 cab roof, 1 LH boom, 1 RH boom, 1 toolbox, 4 all-around)

ATTACHMENTS

Standard boom 7.7 m (CX750D)
Mass Excavation boom 6.5 m (CX750D ME)
HD arm 3.55 (CX750D)
HD Mass Excavation arm 3.02 m (CX750D ME)
Safety valves and bucket linkage with hook

RETRACTABLE CHASSIS

650 mm double grouser
Full track guide

TELEMATICS

3 years advanced SiteWatch subscription with remote monitoring

OPTIONAL EQUIPMENT

HYDRAULICS

Low-flow circuit, proportional control
Multifunction (hammer/high flow) circuit with electrical proportional control, manual 3-way valve selection

ATTACHMENTS

Hydraulic quick coupler provision
HD Mass Excavation arm 3.02 m (CX750D)
Arm 4.11/5.0 m (CX750D)

OPERATOR STATION

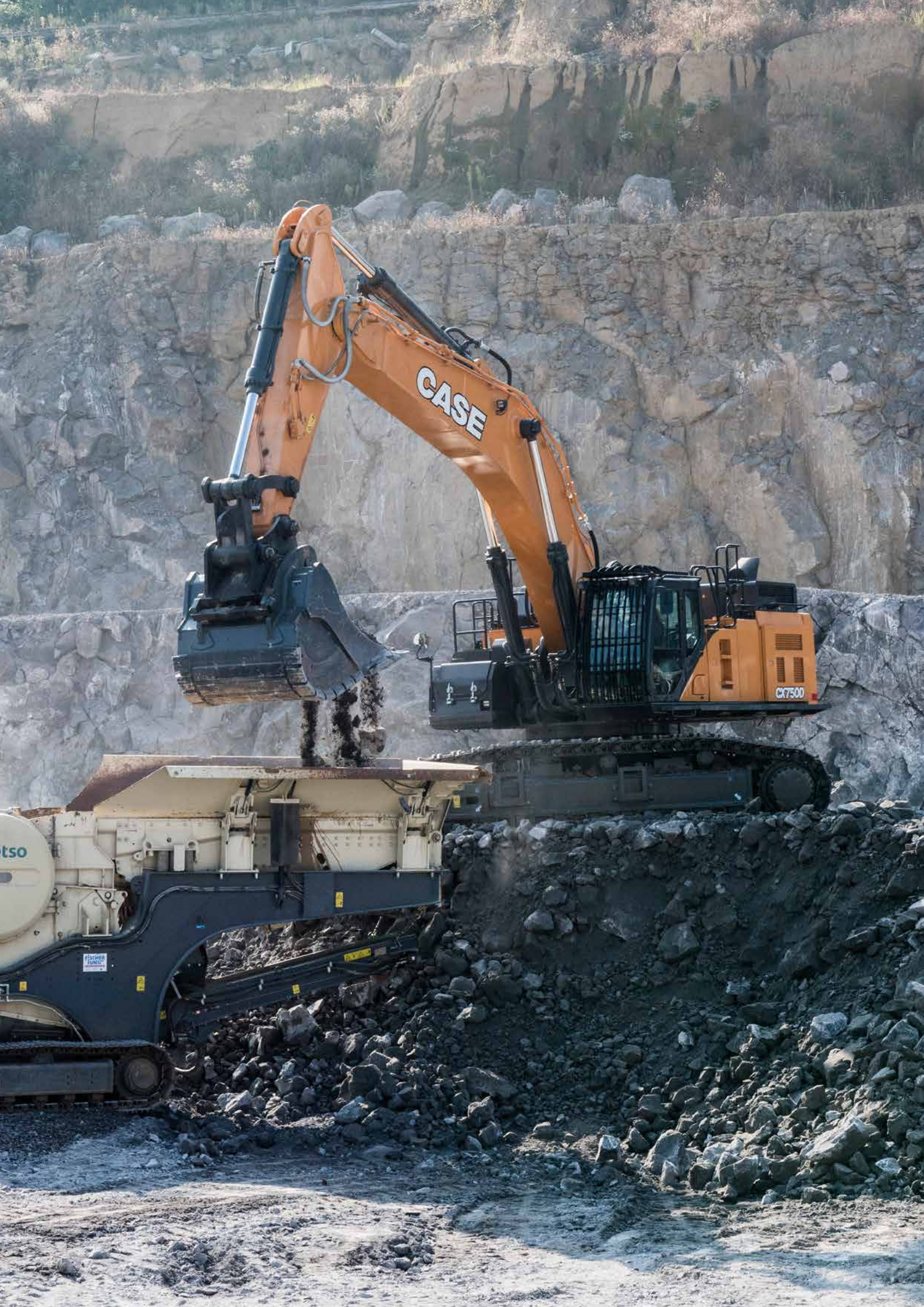
Front cab guard - vertical bars (OPG level 2)
Front cab guard - vertical bars (OPG level 1)

UPPERSTRUCTURE

Hydraulic and engine oil sampling ports

UNDERCARRIAGE

Track shoes 750 mm triple grouser
Track shoes 900 mm triple grouser



CASE

CX7500

tso

FISCHER
TECHNIK

CX D-SERIES

CX750D - CX750D ME

ENGINE

CX750D

CX750D ME

Model _____ ISUZU VE-6WG1X
 Type _____ Water-cooled, 4-cycle diesel, 6-cylinder in line, high pressure common rail system (electric control), Turbocharger with air cooled intercooler, without cooling fan, SCR & DPD system

Number of cylinders / Displacement (l) _____ 6/15.7

Emissions level _____ EU N°2016/1628 STAGE V

Bore & stroke (mm) _____ 147 x 154

Rated flywheel horse power

ISO 14396 (kW / hp) _____ 382 / 512 at 1800 min⁻¹

With fan pump (kW / hp) _____ 343 / 460

Maximum torque

ISO 14396 (Nm) _____ 2090 Nm at 1450 min⁻¹

HYDRAULIC SYSTEM

Main pumps _____ 2 variable displacement axial piston pumps with regulating system

Max. oil flow (l/min) _____ 2 x 472 at 1800 min⁻¹

Working circuit pressure

Boom/Arm/Bucket (MPa) _____ 31.4

With auto power boost (MPa) _____ 34.3

Swing circuit (MPa) _____ 27.9

Travel circuit (MPa) _____ 34.3

Pilot pump _____ 1 gear pump

Max. oil flow (l/min) _____ 27

Working circuit pressure (MPa) _____ 4.4

Boom Cylinders

Bore (mm) _____ 190

Stroke (mm) _____ 1805

Arm Cylinders

Bore (mm) _____ 210

Stroke (mm) _____ 2055

Bucket Cylinders

Bore (mm) _____ 185 | 200

Stroke (mm) _____ 1465 | 1450

SWING

Maximum swing speed (min⁻¹) _____ 6.1

Swing torque (kNm) _____ 241

UNDERCARRIAGE

High travel speed (km/h) _____ 4.3

Low travel speed (km/h) _____ 3.0

Drawbar pull (kN) _____ 449

Track shoes _____ 650 mm, 750 mm or 900 mm double grouser shoes

CX750D

CX750D ME

CIRCUIT AND COMPONENT CAPACITIES

Fuel tank (l) _____ 900

Hydraulic system (l) _____ 650

Hydraulic reservoir (l) _____ 310

Adblue tank (l) _____ 152

SOUND LEVEL

External guaranteed sound level

(EU Directive 2000/14/EC) _____ LwA 107 dB(A)

Operator cab sound pressure level

(ISO 6396) _____ LpA 72 dB(A)

WEIGHT AND GROUND PRESSURE

with 7.70 m Boom, 3.55 m Arm, 3.3 m³ Heavy Duty bucket, 650 mm grouser shoes, operator, fluids, full fuel tank, and FOPS level 2 guard.

CX750D

Weight

Ground pressure

72000 kg

0,106 MPa

With 6.58 m Boom, 3.02 m Arm, 4.2 m³ Rock bucket, 650 mm grouser shoes, operator, fluids, full fuel tank, and FOPS level 2 guard.

CX750D ME

Weight

Ground pressure

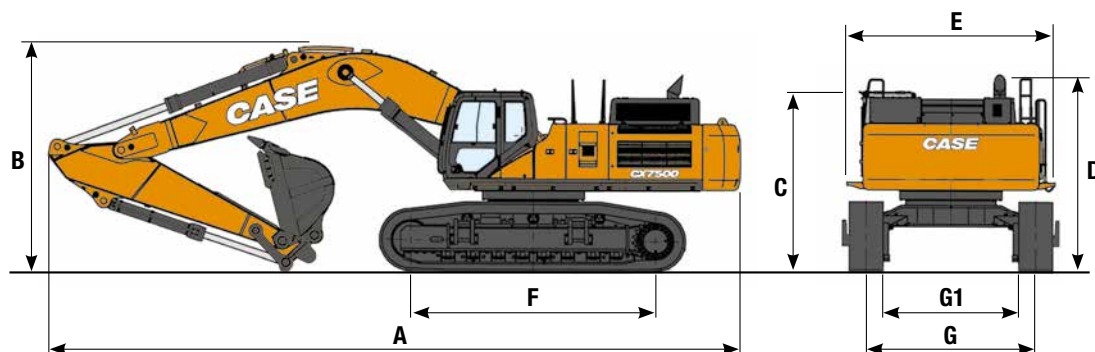
72850 kg

0,107 MPa

Counterweight 10400 kg

SPECIFICATIONS

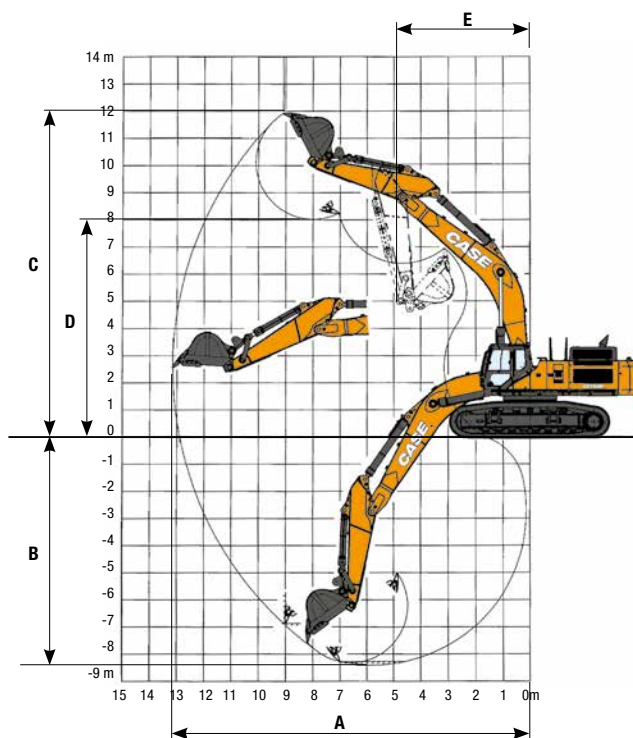
GENERAL DIMENSIONS



CX750D		Arm 3.55 m	Arm 3.02 m	Arm 4.11 m	Arm 5.00 m
A Overall length (with attachment)	mm	13370	13380	13350	13250
B Overall height (to top of boom)	mm	4320	4440	4590	5050
C Cab height	mm	3590	3590	3590	3590
D Overall height (to top of guardrail)	mm	3950	3950	3950	3950
Upper structure overall width (without catwalk)	mm	3700	3700	3700	3700
E Upper structure overall width (with catwalk)	mm	4170	4170	4170	4170
F Wheel base (center to center of wheels)	mm	4710	4710	4710	4710
G Track gauge (Extended)	mm	3350	3350	3350	3350
G1 Track gauge (Retracted)	mm	2740	2740	2740	2740
Undercarriage overall width (Extended) (with 650 mm shoes)	mm	4000	4000	4000	4000
Undercarriage overall width (Retracted) (with 650 mm shoes)	mm	3390	3390	3390	3390
Tail swing radius	mm	4050	4050	4050	4050

CX750D ME		Arm 3.02 m
A Overall length (with attachment)	mm	12250
B Overall height (to top of boom)	mm	4960
C Cab height	mm	3590
D Overall height (to top of guardrail)	mm	3950
Upper structure overall width (without catwalk)	mm	3700
E Upper structure overall width (with catwalk)	mm	4170
F Wheel base (center to center of wheels)	mm	4710
G Track gauge (Extended)	mm	3350
G1 Track gauge (Retracted)	mm	2740
Undercarriage overall width (Extended) (with 650 mm shoes)	mm	4000
Undercarriage overall width (Retracted) (with 650 mm shoes)	mm	3390
Tail swing radius	mm	4050

PERFORMANCE DATA



CX750D		Arm 3.55 m	Arm 3.02 m	Arm 4.11 m	Arm 5.00 m
Boom length	mm	7700	7700	7700	7700
Arm length	mm	3550	3020	4110	5000
A Maximum reach	mm	13070	12780	13630	14450
B Max digging depth	mm	8400	7870	8970	9850
C Max digging height	mm	11630	12100	11970	12280
D Max dumping height	mm	7810	8090	8110	8400
E Min. Swing radius	mm	5810	5830	5730	5710

CX750D ME		Arm 3.02 m
Boom length	mm	6580
Arm length	mm	3020
A Maximum reach	mm	11730
B Max digging depth	mm	7180
C Max digging height	mm	11060
D Max dumping height	mm	6990
E Min. Swing radius	mm	5150

DIGGING FORCE (ISO 6015)

CX750D		Arm 3.55 m	Arm 3.02 m	Arm 4.11 m	Arm 5.00 m
Arm digging force	kN	259	289	233	202
with auto power up	kN	283	316	254	220
Bucket digging force	kN	306	306	307	307
with auto power up	kN	334	334	335	335

CX750D ME		Arm 3.02 m
Arm digging force	kN	281
with auto power up	kN	307
Bucket digging force	kN	335
with auto power up	kN	366

CX D-SERIES

CX750D - CX750D ME

CX750D

HEAVY DUTY BUCKETS (DIRECT MOUNT)

CAPACITY (ISO7451 HEAPED)	WIDTH	WEIGHT	ARM 3.02 m	ARM 3.55 m	ARM 4.11 m	ARM 5.00 m
2.70 m ³	1450 mm	3140 kg	○	○	○	●
3.00 m ³	1600 mm	3350 kg	○	○	●	■
3.30 m ³	1750 mm	3510 kg	●	●	■	■
3.60 m ³	1900 mm	3650 kg	●	■	■	×

ROCK BUCKETS (DIRECT MOUNT)

CAPACITY (ISO7451 HEAPED)	WIDTH	WEIGHT	ARM 3.02 m	ARM 3.55 m	ARM 4.11 m	ARM 5.00 m
3.00 m ³	1600 mm	3590 kg	○	●	●	■
3.30 m ³	1750 mm	3750 kg	⊙	●	■	×
3.60 m ³	1900 mm	3960 kg	●	■	×	×

○ Rated material density up to 2 ton/m³ ⊙ Rated material density up to 1.8 ton/m³ ● Rated material density up to 1.6 ton/m³
 ■ Rated material density up to 1.2 ton/m³ × Not applicable

CX750D ME

HEAVY DUTY BUCKETS (DIRECT MOUNT)

CAPACITY (ISO7451 HEAPED)	WIDTH	WEIGHT	ARM 3.02 m
3.95 m ³	1850 mm	3750 kg	○
4.20 m ³	2000 mm	4000 kg	⊙
4.60 m ³	2200 mm	4200 kg	●

ROCK BUCKETS (DIRECT MOUNT)

CAPACITY (ISO7451 HEAPED)	WIDTH	WEIGHT	ARM 3.02 m
3.95 m ³	1850 mm	3980 kg	○
4.20 m ³	2000 mm	4260 kg	⊙

○ Rated material density up to 2 ton/m³ ⊙ Rated material density up to 1.8 ton/m³ ● Rated material density up to 1.6 ton/m³

LIFTING CAPACITY

CX750D - CX750D ME

Front. Side	REACH													
	2 m		4 m		6 m		8 m		10 m		12 m		At max reach	

RTC UNDERCARRIAGE - Super long arm 5.0 m length, 650 mm shoes. Maximum reach 12.40 m

10.0 m														10120*	10120*	9.81
8.0 m									11750*	11750*				9640*	9640*	11.07
6.0 m									12330*	11670				9590*	8560	11.86
4.0 m					20040*	20040*	15670*	15670*	13350*	11140	11420*	8160	9890*	7840	12.27	
2.0 m					24230*	22660	17780*	14800	14430*	10570	11350	7900	10550*	7540	12.34	
0 m			12640*	12640*	26660*	21180	19270*	13950	14610	10090	11130	7690	11030	7610	12.08	
-2.0 m	10800*	10800*	19940*	19940*	26930*	20550	19660*	13490	14330	9830			11810	8140	11.46	
-4.0 m	19190*	19190*	29900*	29900*	25110*	20540	18550*	13420	13860*	9860			12860*	9360	10.42	
-6.0 m	30330*	30330*	28620*	28620*	20640*	20640*	14910*	13810					12580*	12170	8.81	

RTC UNDERCARRIAGE - Long arm 4.11 m length, 650 mm shoes. Maximum reach 11.50 m

10.0 m														13150*	13150*	8.75
8.0 m									13230*	11740				12440*	11430	10.14
6.0 m							15150*	15150*	13540*	11510				12390*	9720	11
4.0 m					22380*	22380*	17070*	15620	14370*	11050				12560	8850	11.44
2.0 m					25980*	22170	18890*	14650	15100	10570				12170	8510	11.52
0 m					27430*	21110	19930*	13990	14710	10210				12440	8660	11.24
-2.0 m	11940*	11940*	21000*	21000*	26700*	20820	19720*	13700	14580	10080				13520	9380	10.57
-4.0 m	23290*	23290*	32680*	32680*	23800*	21040	17700*	13810						13890*	11120	9.43
-6.0 m			23400*	23400*	17620*	17620*								12870*	12870*	7.6

RTC UNDERCARRIAGE - Standard arm 3.55 m length, 650 mm shoes. Maximum reach 11.00 m

8.0 m														14220*	12640	9.49
6.0 m							15990*	15990*	14220*	11340				14030*	10570	10.41
4.0 m					23650*	23610	17780*	153902	14890*	10940				13550	9550	10.87
2.0 m					26770*	21840	19390*	14510	15040	10510				13120	9180	10.95
0 m					27520*	21040	20110*	13950	14730	10220				13460	9370	10.65
-2.0 m			22940*	22940*	26130*	20920	19470*	13770						14740*	10280	9.95
-4.0 m			29730*	29730*	22510*	21290	16680*	14020						14550*	12520	8.73
-6.0 m					14840*	14840*								12720*	12720*	6.71

RTC UNDERCARRIAGE - Short arm 3.0 m length, 650 mm shoes. Maximum reach 10.70 m

10.0 m														16360*	16360*	7.58
8.0 m							15630*	15630*						15220*	13150	9.16
6.0 m					20680*	20680*	16680*	16050	14860*	11120				14820*	10910	10.1
4.0 m					24650*	23000	18320*	15130	15290*	10800				14010	9850	10.58
2.0 m					27210*	21440	19690*	14320	14940	10420				13580	9490	10.67
0 m					27230*	20880	20080*	13850	14720	10210				14020	9760	10.36
-2.0 m			19010*	19010*	25240*	20390	18990*	13780						14670*	10820	9.63
-4.0 m			26380*	26380*	20910*	20910*	15170*	14210						13820*	13470	8.36

RTC UNDERCARRIAGE - ME Short arm 3.0 m length, 650 mm shoes. Maximum reach 9.53 m

8.0 m														16730*	16730*	7.78
6.0 m							17720*	16520						16020*	13800	8.88
4.0 m					24190*	24190*	19020*	15810						16310*	12170	9.42
2.0 m					27400	22900	20360*	15050						16580	11650	9.51
0 m					28270*	21990	20690*	14550						17280	12060	9.17
-2.0 m	22530*	22530*	37070*	37070*	26240*	21840	18690*	14520						17350*	13790	8.33
-4.0 m			27620*	27620*	19740*	19740*								15970*	15970*	6.82

* The above loads (kg) are compliant to the ISO standards and refer to the excavator equipped without bucket. The indicated loads are no more than 87% of hydraulic system lift capacity or 75% of static tipping load. Values marked with an asterisk (*) are limited by the hydraulic lifting capacity.

www.casece.com
EXPERTS FOR THE REAL WORLD
SINCE 1842

CASE
CONSTRUCTION



Form No. 20191GB - MediaCross Firenze - 01/25

**CNH INDUSTRIAL
DEUTSCHLAND GMBH**
Case Baumaschinen
Benzstr. 1-3 - D-74076 Heilbronn
DEUTSCHLAND

**CNH INDUSTRIAL
MAQUINARIA SPAIN, S.A.**
Avenida Aragón 402
28022 Madrid - ESPAÑA

CNH INDUSTRIAL FRANCE, S.A.
16-18 Rue des Rochettes
91150 Morigny-Champigny
FRANCE

CNH INDUSTRIAL ITALIA SPA
Lungo Stura Lazio 19
10156, Torino
ITALIA

CASE CONSTRUCTION EQUIPMENT
Cranes Farm Rd
Basildon - SS14 3AD
UNITED KINGDOM

NOTE: Standard and optional fittings can vary according to the demands and specific regulations of each country. The illustrations may include optional rather than standard fittings - consult your Case dealer. Furthermore, CNH Industrial reserves the right to modify machine specifications without incurring any obligation relating to such changes.

Conforms to directive 2006/42/EC

CASE
00800-2273-7373

The call is free from a land line.
Check in advance with your Mobile Operator if you will be charged. Toll free number not available from all calling areas.

