

Telehandler Range

TH7.42 Elite







New TH range, as good as gold.

For over 25 years New Holland telehandlers have continued to deliver an unrivalled mix of performance, dependability and affordability. The new TH series machines benefit from a striking new yellow and grey livery, reflecting their importance to the hay and forage sector and association with those product lines.

The new TH model features an all new and 6x3 PowerShift™ transmission, providing smoother shifting and shuttling performance resulting in a better driving experience. Compliant to Tier 3 emissions standards, enhanced performance and economy are matched to improve comfort and reduce operating costs. The very latest cab sets a benchmark for low noise and comfort.

Model	Max reach	Capacity	Max Power	Transmission	Hydraulic Pump
	<i>m</i>	<i>kg</i>	<i>hp</i>		<i>lpm</i>
TH7.42 Elite	7.0	4200	146	6x3	140

TH Elite model

The TH7.42 Elite model is aimed at the most demanding operators who require maximum productivity and comfort at all times. These machines produce a maximum power output of 146hp from a Tier 3, 4.5 litre NEF engine and features the new 6F-3R PowerShift™ transmission. The Elite models feature three transmission modes, Manual, Semi-auto and Full-auto. The transmission modes makes the Elite model well suited to transport work and towing capacity with a braked trailer is a massive 20 tonnes.

Elite model features include:

- > 146hp Tier 3 engine
- > Limited slip diffs front and rear
- > Reversible cooling fan
- > 142° dump angle
- > 140lpm variable pump
- > Hydraulic pressure release
- > Armrest mounted joystick
- > Full LED light pack
- > Heated air suspended seat
- > Automatic steering alignment
- > 40kph max speed
- > HVAC ventilation system
- > Hydraulic quick coupler
- > Rear hydraulic pickup hitch
- > Telescopic steering column

More choice, more productivity.

The new TH7.42 Elite model features 146hp engines, 3 mode 6x3 PowerShift™ transmissions, piston pump and a seat mounted joystick, reversible cooling fan, and limited slip front & rear diff. The new TH range is the product of years of development, investment and listening to customer feedback.

Superior visibility and comfort

The new TH range features an advanced cab design that offers improved comfort, noise suppression and visibility for maximum productivity at any time. The new LED worklight can produce up to 25,000 lumen of combined lighting power to turn night into day and increase safety and productivity.

Enhanced quality

The TH telehandlers feature a twin U shaped robot welded boom, that is extremely rigid and durable. The H shaped ladder chassis has massive torsional strength and is engineered to operate in the most demanding applications. New Holland is committed to ongoing quality improvement and has invested in a new dedicated TH production line.

Ease of ownership

Downtime is the enemy of productivity, that is why all TH telehandlers are engineered to minimise the need for routine maintenance for optimised dependability. Daily checks and routine care has been simplified, making it easier to look after the handler between its extended 600-hour service intervals.

The Telehandler TH7.42 Highlights

1. 360° vision, 71dB(A) noise levels
2. 4.2 tonne lift capacity
3. LED worklights
4. Optional complete auto lubrication system
5. Hydraulic quick-coupler
6. New 6x3 PowerShift™ transmission
7. Industrial or Agricultural tyre options
8. Best in class service access
9. 3 mode steering with auto alignment option
10. Tier 3 engine, up to 146hp
11. Automatic reversible cooling fan
12. External Aux pressure relief switch





See more for better productivity.

New Holland has taken its established expertise in tractor cab design and applied it to the 360° Vision Cab. Offering class-leading space and comfort, the cab affords excellent all-round visibility with an unparalleled view of the front of the carriage / forks when fully lowered. In work, this extra visibility boosts productivity in duties to include loader work and speeds up attachment changeovers.

More glass, brilliant visibility

Extensive research by New Holland has led to the development of the 360° Vision Cab. A key aim was to help reduce 'blind spots' over the front of the boom, particularly when fully raised and fully lowered. By combining a wide and deep front screen with slim 'A' pillars, the visibility from the operators seat is greatly enhanced.

Engineered for low noise

The best way to reduce noise is to eliminate its sources. By combining a number of design developments, TH in-cab noise levels are just 71dB(A).





New LED lights

- A powerful LED lighting package is fitted standard to the TH model
- Each LED light outputs 2500 lumen
- LED lights give all round visibility for enhanced safety and productivity – 5 front facing, 3 rear facing and 2 side facing

Eight vents for comfort

- Powerful air-conditioning system ensures day long comfort
- Eight adjustable louvers direct warm or cool air to where its needed
- The cab also features opening rear and door windows for fresh air entry



Cab and controls

- TH Elite model features an electronic joystick mounted on the seat armrest
- Gear selection, neutral, forward/reverse shuttle, boom and 3rd service functions can be operated from the joystick
- A steering column mounted shuttle lever is also optional on the Elite model
- Steering wheel adjusts for both tilt and reach
- The heated air suspended seat is standard

Proven performance. Responsive productivity.

TH telehandlers are powered by Tier 3, 4.5 litre, four-cylinder engines, manufactured in house by FPT Industrial. Proven in the New Holland T6 tractor models, these exceptionally clean running engines technology, have a long 600 hour service interval and a proven economy and dependability record. The rated power output is 131hp. This figure climbs to 146hp as engine speed drops to 1,800rpm. To minimise power loss, the engine flywheel connects directly to the transmission via a heavy-duty 280mm torque convertor, a transfer box directing power to the front and rear axles. TH Elite model achieves a maximum 40km/hr transport speed, and feature a transport mode that, when manually activated, automatically locks the boom functions. Transport mode also prevents the operator from activating 4WS or crab steer modes, permitting front axle steering only.



Reversing fans keep everything cool

- Main engine radiator fan reverses every 6 minutes and runs for 15 seconds
- Dust and debris are blown from the engine cooling package, oil coolers and intercooler
- The same cycle is repeated by two electrical fans to clean air-con, fuel cooler and transmission radiators

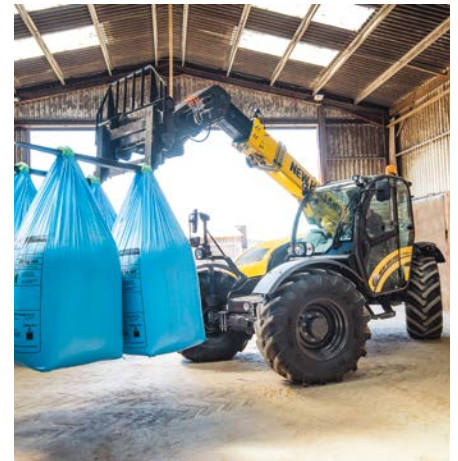
Bigger tyres, more choice

- TH telehandlers are fitted with 460/70R24 tyres
- Wider 500/70R24 option can be specified
- Ground clearance at the lowest point under the axles is a generous 415mm
- Industrial and Hybrid tyre option are now available in 460 and 500mm sizes



TH Elite 6x3 transmission features auto modes

- > Elite model features the new 6x3 transmission with 3 modes, Manual, Semi-auto and Full-auto
- > Full-auto mode is active between gears 2 - 6 for great roading performances; Semi-auto mode operates between gears 2 - 4 to maximise productivity in yards and tight spaces
- > Memory shuttle on Elite models remembers the last used forward and reverse gears when changing direction



Full time 4WD and auto traction control

- > All TH models feature full time 4WD as standard
- > Front and rear limited slip differential is also standard on all models
- > The differential directs up to 45% of available torque across the axle to ensure the wheel with the greatest traction always gets power

Hydraulic wet disc brakes

- > Sealed wet disc brakes on both TH axles require minimal maintenance and can handle high transport speeds
- > The hydraulic trailer brake circuit is linked to the TH's brakes to enhance safety
- > The parking brake* is automatically activated at any time the engine is switched off; it can be manually engaged by shuttle lever on steering column or via a dash mounted switch

* SAHR system (Spring Applied Hydraulic Release).

Manoeuvrability and steering modes

- > Turning radius when 4WS is engaged is just 3.9m
- > Transport mode permits the selection of 2WS only
- > The TH Elite model offers auto wheel alignment when switching between, all-wheel, crab and front steering

Powerful hydraulics deliver fast work cycles.

Efficient hydraulics are key to telehandler productivity. This goes beyond pump capacity; efficient use of available oil, optimised ram sizes and effective control valves all making a contribution to overall performance.

The new TH model benefits from New Holland's 25 years of telehandler development, careful attention to the design of the hydraulic circuit not just improving cycle times but also in ensuring performance is maintained in demanding conditions to include extreme heat. Two front auxiliary hydraulic outlets, complete with valves and diverters, to control front mounted attachments are fitted. Additional rear auxiliary lines are also available.





Variable pump delivers high output at low engine speeds

- > The TH7.42 Elite model is fitted with a high performance, variable displacement piston pump with a maximum output of 140 L/min
- > Guaranteed to deliver high flow rates at all engine speeds but to also close down when there is no demand on the system
- > This allows more engine power to be diverted to the transmission and is of particular value in duties to include transport and when climbing a silage bunker



External pressure release switch

- > Switch attachments over quickly and easily without returning to the cab by pressing the Aux pressure relief switch located above the front fender

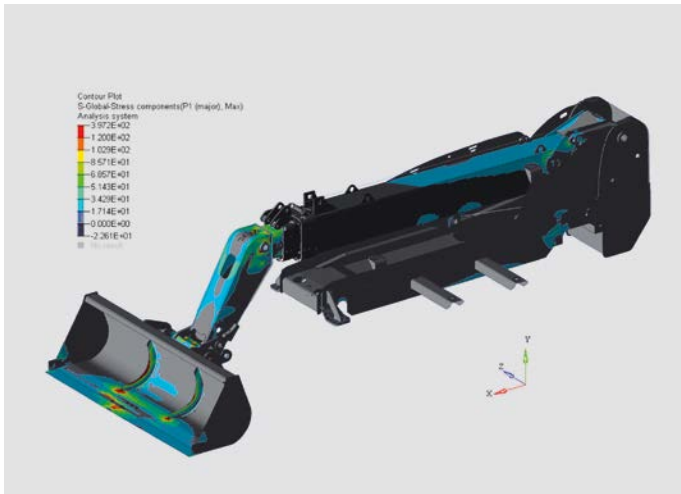


Strength by design.

New Holland employs state-of-the-art manufacturing techniques and has invested millions in the production line for the TH model. Robot welding is a key manufacturing process and ensures consistent quality during chassis and boom construction.

- Hydraulic end-stroke dampers ensure smooth boom retraction and extension
- Dampers also protect the boom and operator from regular shock loads
- Engineered 40/60 weight distribution eliminates the need for bolt-on counterweights
- Excellent stability and traction is achieved when loaded
- Chassis strength is boosted as a result of the in-built mass
- 45° low profile headstock design enables complete filling of roof cavities
- 142° tilt angle is standard on the Elite
- Hydraulic attachment lock is standard





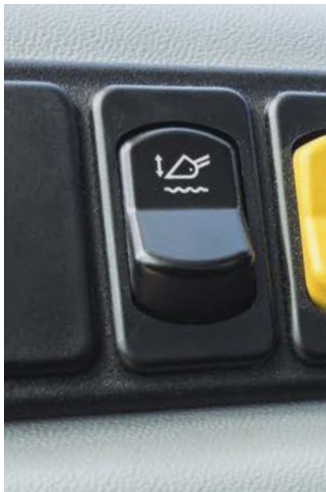
Boom construction

- > Twin U-shaped sections, 10mm - 12mm thick form the boom
- > Heavy duty pins ensure optimum durability
- > Boom wear pads are easy to adjust
- > Boom brushes prevent debris entering the sliding sections



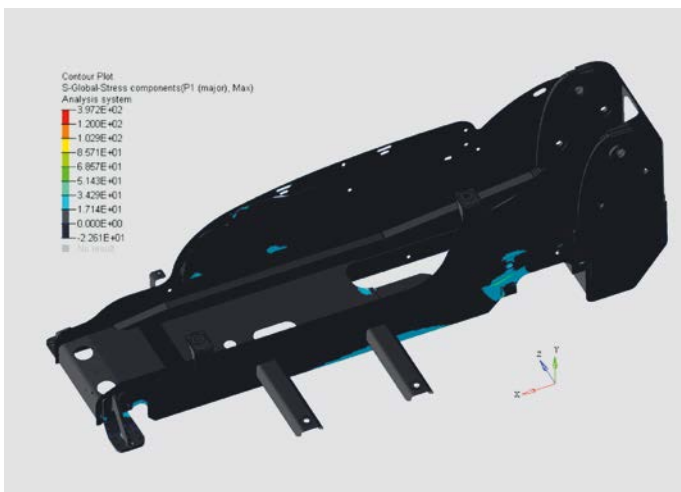
Lifting geometry

- > Main lift ram is positioned under the boom
- > Boom compensation cylinder faces rearward near the hinge point
- > Both cylinders extend in opposite directions as the boom is raised
- > This "opposite working" design improves boom control



Boom suspension

- > Boom suspension reduces shock loads over rough terrain
- > Automatic deactivation occurs when the boom exceeds a 35° lift angle



Chassis construction

- > H-shape ladder chassis is made from 25mm high tensile steel
- > Robot welding ensures exceptional torsional rigidity
- > Exceptionally strong boom support negates the need to add extra counterweights

360°: TH.

New Holland has worked hard to reduce the maintenance demands of its new TH telehandlers.



> Adjusting the telescopic boom pads has been simplified, a simple nut screw and lock nut system making adjustment quick and easy



> 140 litre fuel tank features a wide filler neck and is easy to access



> Elite model features 12 daily grease points
> Grouped grease nipples are optional to grease the axles, lift and compensation cylinders



> The engine air filter is easy to check, clean or replace, without the need for tools



Auto lubrication system (Optional)

- > New auto-lube system ensures that all important lubrication points receive the right amount of grease at the right time
- > Manual activation is possible from the cab
- > Headstock grease points are serviced by a separate dispenser unit

1. The engine hood lifts on gas struts for full access.
2. The compact cooling package is mounted on a frame that enables the radiators to both swing out and tilt for easy cleaning.



New Holland Aftersales Products and Services

In choosing New Holland you have made a quality choice. You are ready to start your journey with us and our network, counting on a wide range of quality products and professional services available and next to you season after season.

GENUINE PARTS

Top performance guaranteed at all times

Committed to keeping your machines in top condition for like-new performance, New Holland offers a wide range of Genuine Parts, manufactured to the same high standards and with the same high-quality components used in new machines.

Genuine Parts are the result of a certified supply chain and stringent tests on the conformity, the reliability and the durability, to ensure consistent high levels of safety and performance over time.



REMAN PARTS

Recommended for your ageing New Holland machine

Choosing the Reman range means embracing our circular product lifecycle approach with the certainty that the components fitted to your machine will be as efficient as new.

Thanks to the unrivalled know-how acquired over the last decades, New Holland is the ideal partner for such a complex and sophisticated industrial process, sustainably remanufacturing the essential components of your machine to the highest standards, guaranteeing as good as new quality at an affordable price.

ACCESSORIES

Tailored to your farming

Every day, New Holland implement solutions that make your machine unique and reliable, covering every single demand.

From safety to productivity, from comfort to power, the complete range of accessories is adapted to your specific activities, as single items or in kits set up by your New Holland dealer.

GENUINE PARTS: whenever, wherever!



Search your parts on <https://www.mychestore.com/anz/en/newhollandag/anz/cn/ANZ>

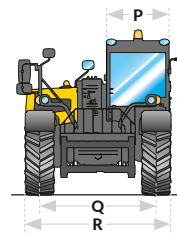
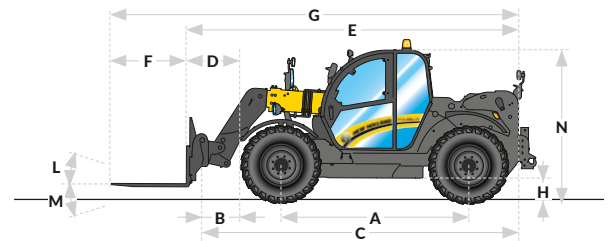
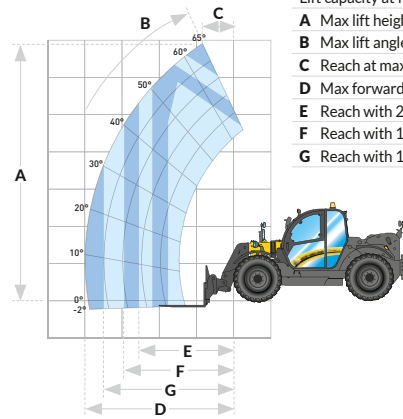
GENUINE PARTS

Model	TH7.42 Elite	
Engine*	NEF N45	
Compliant with engine emissions regulations	Tier 3	
Displacement / No. of cylinders / Valves	(cm ³)	4500 / 4 / 4
Aspiration	Turbo Intercooler	
Fuel system	High Pressure Common Rail	
Rated power - ISO 14396 - ECE R120	[kW/hp(CV)]	96/131@2200rpm
Max power - ISO 14396 - ECE R120	[kW/hp(CV)]	107/146@1800rpm
Max torque - ISO 14396 - ECE R120	(Nm)	591@1400rpm
Transmission		
Traction	4WD	
Type of transmission	PowerShift™	
Number of gears	(F/R)	6x3
Gear shifting modes	Manual, Semi-Auto, Full-Auto	
Gear shifting control	Incorporate on joystick	
Shuttling control	Incorporate on joystick optional lever on steering column	
Max speed	(kph)	40
Brakes		
Service brake actuation	Hydraulic power assisted	
Service brake type	Oil immersed discs	
Discs per axle	(front / rear)	6 / 4
Parking brake	SAHR (Spring Applied Hydraulic Release) integrated in Front Axle	
Axles and differentials		
Front axle type	Limited Slip differential	
Rear axle type	Limited Slip differential	
Steering		
Actuation	Power steering	
Operating modes	2WS, 4WS, Crab	
Manual wheel alignment with visual indicators	-	
Automatic wheel alignment	●	
Tyres		
Size	460/70R24 - 500/70R24	
Pattern type	Agriculture, Hybrid	
Hydraulics		
Variable flow pump - 140lpm / 240bar	●	
Front auxiliary flow	(lpm)	130
Rear auxiliary flow	(lpm)	140
Boom/Tilt control	Electro-Proportional	
Boom extension control	Electro-Proportional	
Auxiliary circuits control	Electro-Proportional	
Cycle time - Lift / Lower	(seconds)	6.7 / 5.2
Cycle time - Extend / Retract	(seconds)	6.2 / 4.5
Cycle time - Dump / Crowd	(seconds)	2.8 / 2.9
Electrical		
Alternator	(Amps)	120
Battery	12V-180Ah-1000A	
Cab		
Vision	360°	
Structure	ROPS - ISO 3471 / FOPS - ISO 3449	
Cab noise level - LpA - ISO 6396:2008	[dB(A)]	71
Air conditioning	●	
Air suspension seat	-	
Heated Air suspension seat	●	
Joystick mount	Seat mounted	
Steering column	Tilting and telescopic	
Capacities		
Fuel tank	(Litres)	140
Engine oil	(Litres)	12
Hydraulic oil tank	(Litres)	105

● Standard - Not available * Developed by FPT

Main performance

Max lift capacity	(kg)	4200
Lift capacity at full height	(kg)	2500
Lift capacity at full reach	(kg)	1500
A Max lift height	(mm)	7000
B Max lift angle	(°)	65
C Reach at max lift height	(mm)	850
D Max forward reach	(mm)	4050
E Reach with 2000 kg load	(mm)	3500
F Reach with 1500 kg load	(mm)	4050
G Reach with 1000 kg load	(mm)	4050



Dimensions

A Wheelbase	(mm)	3000
B Axle to carrier	(mm)	1280
C Carrier to rear of machine*	(mm)	5110
D Axle to fork heel	(mm)	1410
E Fork heel to rear of machine*	(mm)	5240
F Pallet forks length	(mm)	1200
G Overall length	(mm)	6440
H Ground clearance	(mm)	415 / 440
L Rollback angle	(°)	24
M Dump angle	(°)	118
Total angle	(°)	142
N Cab height**	(mm)	2445 / 2470
P Cab width	(mm)	1020
Q Wheel track**	(mm)	1870 / 1840
R Overall width (outside tyres)	(mm)	2340
Turning radius outside tyres - 4WS**	(mm)	3910 / 4090
Operating weight***	(kg)	8000

* Without rear hitch ** with smaller / larger tyres *** Includes forks, full fuel tank and driver



www.newholland.com/au | www.newholland.com/nz



The data indicated in this folder are approximate. The models described here can be subjected to modifications without any notice by the manufacturer. The drawings and photos may refer to equipment that is either optional or intended for other countries. Please get into contact with our dealer for any further information. Published by New Holland Brand Communications. BTS Adv. - Printed in Australia O1 26 - 26NHTRANGEB