

## ENGINE

Model	Isuzu AQ-6HK1X
Emissions Certification	Tier 4 Final
Fuel	Requires ultra-low sulfur fuel B5 biodiesel tolerant
Type	Water-cooled, 4-cycle diesel, 6-cylinder in-line high pressure common rail system – electric control, VGT Turbocharger w/ air cooled intercooler, SCR system
Cylinders	6-cylinder in-line
Displacement	475 in <sup>3</sup> (7.8 L)
Bore/Stroke	4.53 x 4.92 in (115 x 125 mm)
Fuel injection	Direct injection – electronic
Fuel filter	Replaceable, full flow spin-on cartridge
Air filter	Dry type element w/ warning restriction indicator
Oil filter	Replaceable, full flow spin-on cartridge
Engine gradeability:	
Side-to-side	35°
Fore and aft	35°
Net horsepower – SAE J1349 @ 1900 RPM:	268 hp (200 kW)
Net max. torque – SAE J1349 @ 1500 RPM:	729 lbf-ft (988 N-m)
Cooling operating range:	122° to -4°F (50° to -20°C)
Oil	Requires low-ash oil CJ-4

## DRIVETRAIN

Travel control	Dual stage relief/ counter balance design
Brakes	Mechanical disc
Service brakes	SAHR disc – each motor
Two speed travel:	
Max. high speed	3.5 mph (5.6 km/h)
Max. low speed	2.1 mph (3.3 km/h)
Automatic downshift	
Drawbar pull	61,148 lbf (272 kN)
Gradeability	70% – 35° Slope

## ELECTRICAL

Voltage	24 Volts
Alternator rating	90 amp
Batteries	2 x 12 Volt
Battery reserve capacity	128 Ah/5 hour
Work lights – 8	24 Volt
1 boom, 5 upper, 2 cab	

## OPERATOR ENVIRONMENT

Air conditioner output	18,100 BTU/hr
Heater output	20,150 BTU/hr
Sound level inside cab – ISO6396	70 dBA
Electrical outlet	12 Volt
Cab interior light	10 watt
270-degree view cameras	Standard
Seat	Air-suspension, heated and tiltable
Operator's Cab:	
Smooth and round shape design cab; Safety glass for all windows; Shock-less cab suspension by 4-point fluid mounting; Sliding front window w/ auto lock; 10" Full-color LCD monitor display; Membrane switch on monitor display; Switch panel (including throttle dial w/ eco-mode switch); Windshield wiper & washer; AM/FM/Bluetooth Radio w/ hands-free phone; Sectioned floor mat; Polycarbonate roof hatch & Sun shade; Auto air conditioner; Roll-over protective structure (ROPS); Top guard OPG level 1 (in cab structure).	

### Seat:

Low-frequency air suspension w/ air springs and double-acting hydraulic damper; Manual weight adjustment; Backrest angle adjustment; Seat height adjustment; Adjustable armrest (Angle and height); Adjustable headrest; Retractable seat belt; Adjustable lumbar support; Console mount on suspension; Control consoles adjust independently of seat.

## ATTACHMENT

Boom	21 ft 2 in (6.45 m)
HD Boom	21 ft 2 in (6.45 m)
Arm options:	
Standard	10 ft 8 in (3.25 m)
Short	8 ft 8 in (2.63 m)
Long	13 ft 3 in (4.04 m)
Bucket digging force*	51,639 lbf (229.7 kN)
w/ Auto Power-Boost	56,157 lbf (249.8 kN)

NOTE: \*Digging force ratings based on ISO6015.

## OPERATING WEIGHT

Operating weight	83,114 lb (37,700 kg)
w/ shoes	2 ft 7 in (800 mm)
w/ boom	21 ft 2 in (6.45 m)
w/ arm	10 ft 8 in (3.25 m)
w/ bucket	2,601 lb (1,180 kg)
w/ counterweight	15,873 lb (7,200 kg)

NOTE: W/ operator/full fuel tank/standard equipment.

## GROUND PRESSURE

@ Standard operating weight 7.7 psi (0.53 bar)  
w/ 31.5 in (800 mm) triple semi-grouser shoes

## HYDRAULICS

System design	Open center
Main pumps	Two-variable displacement/ axial piston
Max. rated flow	2x 79.5 gpm (301 L/min)
System pressures:	
Boom, arm and bucket	4,975 psi (343 bar)
w/ Power Boost	5,410 psi (373 bar)
Travel circuits	4,975 psi (343 bar)
Swing circuits	4,409 psi (304 bar)
Pilot pump	1 x gear design
Max. capacity	7.5 gpm (28.5 L/min)
Control valves	w/ boom/arm holding valve
1 x four-spool section right track travel, bucket, boom and arm acceleration.	
1 x five-spool selection left track travel, auxiliary, swing, boom and arm acceleration.	
Work mode selections	SP – Mode Power – Mode Eco – Mode Lift – Mode
Swing motor	Fixed displacement axial piston
Swing final drive	Planetary gear reduction
Travel motor	Two-speed independent travel/axial piston

## HYDRAULIC CYLINDERS

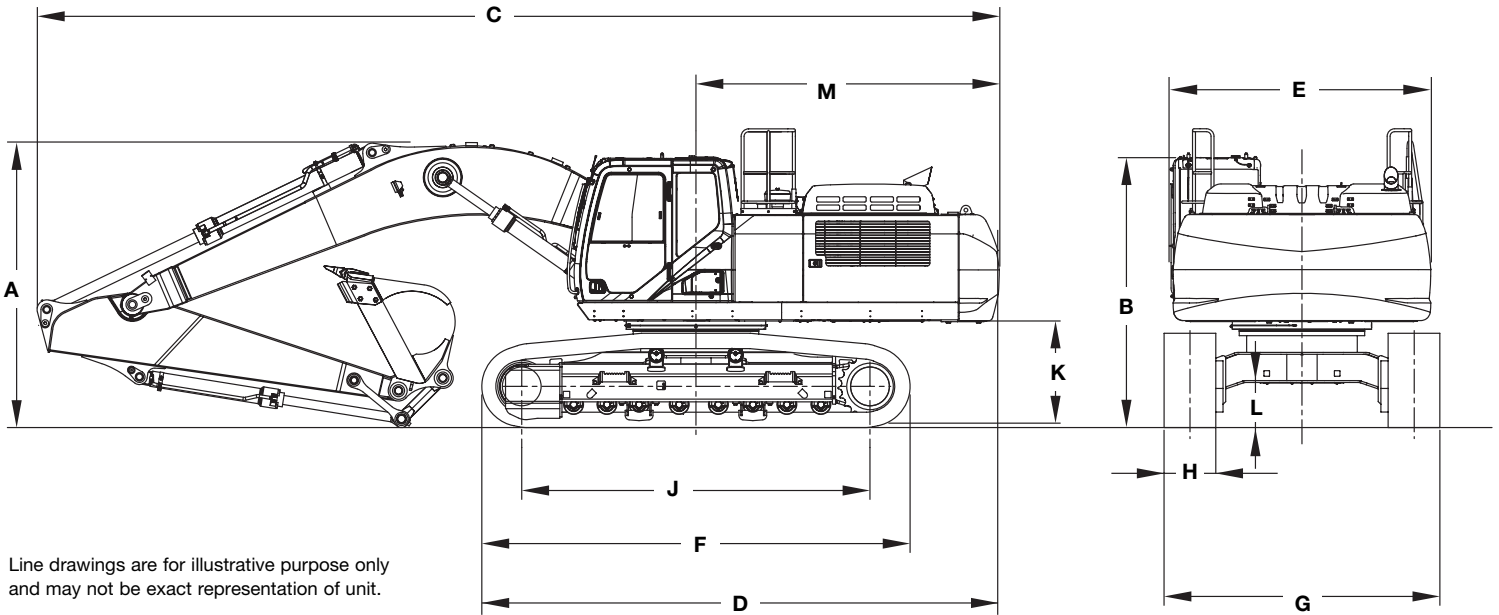
Boom cylinders	Two (2)
Cylinder bore	5.7 in (145 mm)
Cylinder rod diameter	3.9 in (100 mm)
Cylinder stroke	58.9 in (1,495 mm)
Arm cylinder	One (1)
Cylinder bore	6.7 in (170 mm)
Cylinder rod diameter	4.7 in (120 mm)
Cylinder stroke	68.8 in (1,748 mm)
Bucket cylinder	One (1)
Cylinder bore	5.9 in (150 mm)
Cylinder rod diameter	4.1 in (105 mm)
Cylinder stroke	47.6 in (1,210 mm)

## SERVICE CAPACITIES

Fuel tank	153.2 gal (580 L)
Hydraulic system	93.8 gal (355 L)
Hydraulic tank	49.1 gal (186 L)
Engine oil w/ filter	12.9 gal (48.7 L)
Swing drive	1.3 gal (5 L)
Final drive(2)	1.6 gal (6 L)
Cooling system	10.5 gal (39.8 L)
DEF Tank	22 gal (84 L)

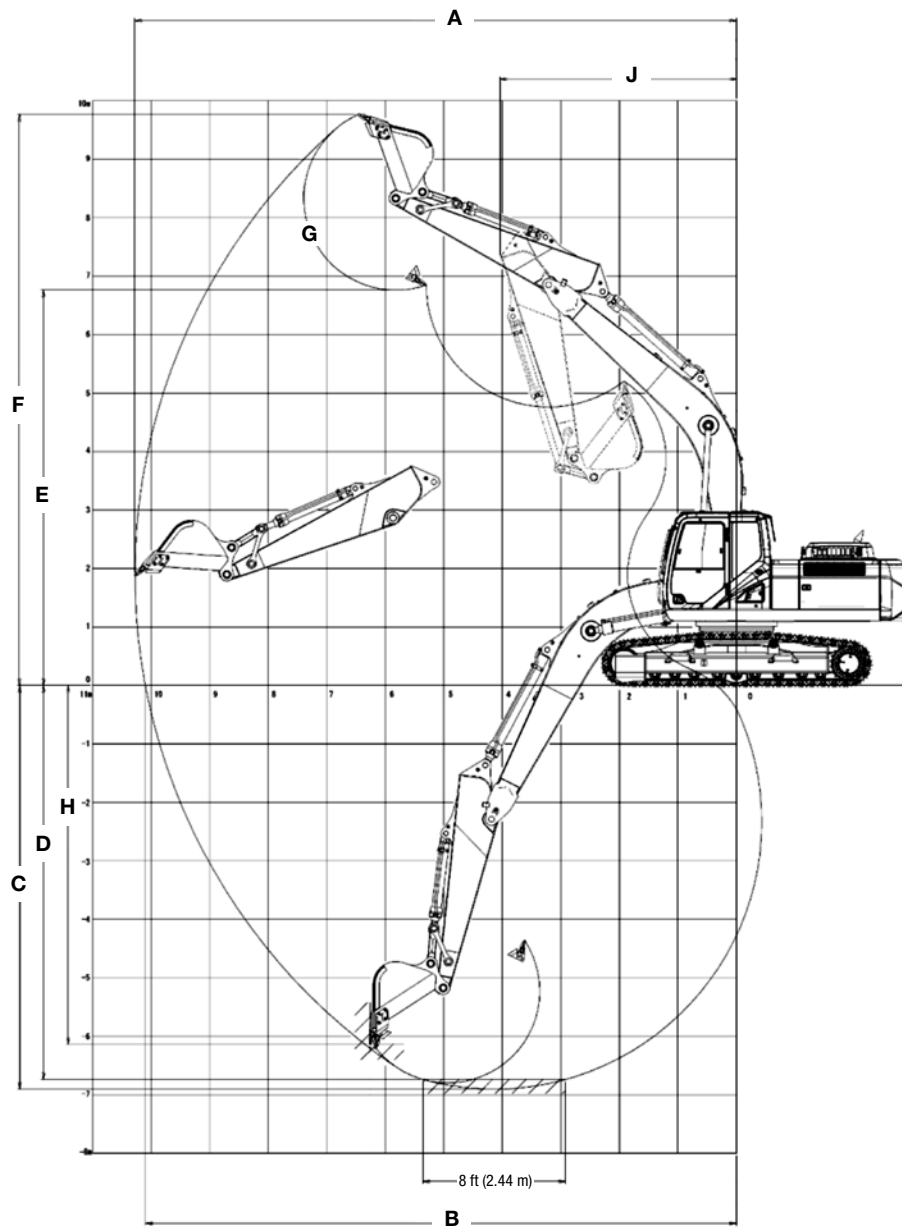
## OTHER SPECIFICATIONS

Swing speed	9.7 RPM
Swing torque	82,607 lbf-ft (112 kN-m)
Swing brake	Mechanical disc
Undercarriage:	
Length	16 ft 4 in (4,990 mm)
Track gauge	8 ft 6 in (2,600 mm)
Carrier rollers	2
Track rollers	8
Shoes – triple grouser	48
Shoe width – std.	2 ft 7 in (800 mm)
Link pitch	8.5 in (216 mm)
Track:	
Chain	Grease lubricated/strutted
Guides	Double
Adjustment	Hydraulic



## DIMENSIONS

	10 ft 8 in (3.25 m) Arm	8 ft 8 in (2.63 m) Arm	13 ft 3 in (4.04 m) Arm
<b>A.</b> Overall height – with attachment	11 ft 5 in (3,470 mm)	11 ft 11 in (3,630 mm)	11 ft 11 in (3,620 mm)
<b>B.</b> Cab height	10 ft 6 in (3,190 mm)	10 ft 6 in (3,190 mm)	10 ft 6 in (3,190 mm)
Overall height to top of guardrail	11 ft 0 in (3,360 mm)	11 ft 0 in (3,360 mm)	11 ft 0 in (3,360 mm)
<b>C.</b> Overall length – with attachment	36 ft 9 in (11,210 mm)	36 ft 11 in (11,260 mm)	36 ft 10 in (11,220 mm)
<b>D.</b> Overall length – without attachment	19 ft 10 in (6,055 mm)	19 ft 10 in (6,055 mm)	19 ft 10 in (6,055 mm)
<b>E.</b> Width of upper structure	9 ft 11 in (3,020 mm)	9 ft 11 in (3,020 mm)	9 ft 11 in (3,020 mm)
Width of upper structure with catwalks	11 ft 9 in (3,590 mm)	11 ft 9 in (3,590 mm)	11 ft 9 in (3,590 mm)
<b>F.</b> Track overall length	16 ft 4 in (4,990 mm)	16 ft 4 in (4,990 mm)	16 ft 4 in (4,990 mm)
<b>G.</b> Track overall width with 31.5 in (800 mm) shoes	11 ft 2 in (3,400 mm)	11 ft 2 in (3,400 mm)	11 ft 2 in (3,400 mm)
<b>H.</b> Track shoe width	2 ft 7 in (800 mm)	2 ft 7 in (800 mm)	2 ft 7 in (800 mm)
<b>J.</b> Center to center – idler to sprocket	13 ft 3 in (4,040 mm)	13 ft 3 in (4,040 mm)	13 ft 3 in (4,040 mm)
<b>K.</b> Upper structure ground clearance	4 ft 0 in (1,210 mm)	4 ft 0 in (1,210 mm)	4 ft 0 in (1,210 mm)
<b>L.</b> Minimum ground clearance	1 ft 7 in (470 mm)	1 ft 7 in (470 mm)	1 ft 7 in (470 mm)
<b>M.</b> Rear tail swing radius	11 ft 8 in (3,560 mm)	11 ft 8 in (3,560 mm)	11 ft 8 in (3,560 mm)



#### PERFORMANCE SPECS

	10 ft 8 in (3.25 m) Arm	8 ft 8 in (2.63 m) Arm	13 ft 3 in (4.04 m) Arm
<b>A.</b> Maximum dig radius	36 ft 9 in (11,200 mm)	35 ft 0 in (10,680 mm)	39 ft 1 in (11,920 mm)
<b>B.</b> Dig radius at groundline	36 ft 1 in (11,000 mm)	34 ft 5 in (10,480 mm)	38 ft 6 in (11,740 mm)
<b>C.</b> Maximum dig depth	24 ft 2 in (7,360 mm)	22 ft 1 in (6,740 mm)	26 ft 9 in (8,160 mm)
<b>D.</b> Dig depth – 8 ft 0 in (2.44 m) level bottom	23 ft 8 in (7,210 mm)	21 ft 7 in (6,570 mm)	26 ft 4 in (8,030 mm)
<b>E.</b> Dump height	23 ft 8 in (7,220 mm)	23 ft 3 in (7,080 mm)	24 ft 8 in (7,510 mm)
<b>F.</b> Maximum reach height	34 ft 1 in (10,390 mm)	33 ft 10 in (10,300 mm)	35 ft 0 in (10,660 mm)
<b>G.</b> Bucket rotation	173°	173°	173°
<b>H.</b> Maximum vertical wall dig depth	20 ft 11 in (6,370 mm)	19 ft 9 in (6,010 mm)	23 ft 2 in (7,050 mm)
<b>J.</b> Minimum swing radius	14 ft 10 in (4,510 mm)	14 ft 7 in (4,440 mm)	14 ft 10 in (4,530 mm)
Arm digging force:			
Standard	36,981 lbf (164.5 kN)	43,770 lbf (194.7 kN)	31,473 lbf (140 kN)
Power Boost	40,196 lbf (178.8 kN)	47,592 lbf (211.7 kN)	34,216 lbf (152.2 kN)
Bucket digging force:			
Standard	51,639 lbf (229.7 kN)	51,639 lbf (229.7 kN)	51,639 lbf (229.7 kN)
Power Boost	56,157 lbf (249.8 kN)	56,157 lbf (249.8 kN)	56,157 lbf (249.8 kN)

NOTE: \*Machine equipped with 21 ft 2 in (6.45 m) boom.

# LIFT CAPACITIES

## 10 ft 8 in (3.25 m) Arm Lift capacities calculated using no bucket.

Load (Lift Point) Height	10 ft (3 m)		15 ft (4.5 m)		20 ft (6 m)		25 ft (7.5 m)		30 ft (9 m)		MAXIMUM REACH		
	END	SIDE	END	SIDE	END	SIDE	END	SIDE	END	SIDE	@	END	SIDE
+25 ft (7.5 m)							15,450 lb* (8 180 kg)*	15,450 lb* (8 180 kg)*			25' 2" (7.5 m)	14,700 lb* (6 620 kg)*	14,700 lb* (6 620 kg)*
+20 ft (6 m)							19,300 lb* (8 810 kg)*	17,600 lb (8 190 kg)			28' 2" (8.62 m)	14,100 lb* (6 380 kg)*	14,100 lb* (6 380 kg)*
+15 ft (4.5 m)					23,250 lb* (10 740 kg)*	23,250 lb* (10 740 kg)*	20,500 lb* (9 400 kg)*	17,150 lb (7 950 kg)	14,200 lb* (7 880 kg)*	12,850 lb (5 980 kg)	30' 0" (9.17 m)	14,050 lb* (6 380 kg)*	12,850 lb (5 800 kg)
+10 ft (3 m)			35,750 lb* (16 620 kg)*	34,350 lb (15 920 kg)	26,650 lb* (12 310 kg)*	22,750 lb (10 530 kg)	22,200 lb* (10 200 kg)*	16,500 lb (7 660 kg)	18,700 lb (8 680 kg)	12,600 lb (5 850 kg)	31' 0" (9.45 m)	14,500 lb* (6 580 kg)*	12,000 lb (5 430 kg)
+5 ft (1.5 m)			41,050 lb* (19 010 kg)*	32,250 lb (14 950 kg)	29,600 lb* (13 680 kg)*	21,600 lb (10 020 kg)	23,800 lb* (10 950 kg)*	15,900 lb (7 370 kg)	18,350 lb (8 530 kg)	12,300 lb (5 710 kg)	31' 1" (9.47 m)	15,400 lb* (7 000 kg)*	11,700 lb (5 300 kg)
Groundline			42,800 lb* (19 750 kg)*	31,250 lb (14 520 kg)	31,300 lb* (14 440 kg)*	20,900 lb (9 680 kg)	23,500 lb (10 920 kg)	15,450 lb (7 160 kg)	18,150 lb (8 420 kg)	12,100 lb (5 610 kg)	30' 5" (9.26 m)	17,000 lb* (7 700 kg)*	11,900 lb (5 400 kg)
-5 ft (-1.5 m)	31,650 lb* (13 980 kg)*	31,650 lb* (13 980 kg)*	41,750 lb* (19 230 kg)*	31,050 lb (14 420 kg)	31,250 lb* (14 430 kg)*	20,550 lb (9 540 kg)	23,300 lb (10 810 kg)	15,250 lb (7 070 kg)			28' 10" (8.79 m)	19,150 lb (8 680 kg)	12,750 lb (5 770 kg)
-10 ft (-3 m)	50,400 lb* (22 230 kg)*	50,400 lb* (22 230 kg)*	38,250* (17 650 kg)*	31,250 lb (14 530 kg)	29,150 lb* (13,500 kg)*	20,650 lb (9 560 kg)	22,350 lb* (10 430 kg)*	15,400 lb (7 110 kg)			26' 2" (8 m)	20,700 lb* (9 380 kg)*	14,550 lb (6 570 kg)
-15 ft (-4.5 m)	41,150 lb* (19 130 kg)*	41,150 lb* (19 130 kg)*	31,450 lb* (14 640 kg)*	31,450 lb* (14 640 kg)*	23,600 lb* (11 110 kg)*	21,200 lb (9 790 kg)					22' 1" (6.81 m)	20,100 lb* (9 140 kg)*	18,650 lb (8 320 kg)

## 8 ft 8 in (2.63 m) Arm Lift capacities calculated using no bucket.

Load (Lift Point) Height	10 ft (3 m)		15 ft (4.5 m)		20 ft (6 m)		25 ft (7.5 m)		MAXIMUM REACH		
	END	SIDE	END	SIDE	END	SIDE	END	SIDE	@	END	SIDE
+25 ft (7.5 m)									23' 0" (7.11 m)	21,000 lb* (9 470 kg)*	19,750 lb (8 750 kg)
+20 ft (6 m)					22,350 lb* (10 260 kg)*	22,350 lb* (10 260 kg)*	20,800 lb* (9 470 kg)*	17,200 lb (7 990 kg)	26' 3" (8.05 m)	19,900 lb* (9 020 kg)*	15,800 lb (7 100 kg)
+15 ft (4.5 m)			31,500 lb* (14 660 kg)*	31,500 lb* (14 660 kg)*	24,850 lb* (11 470 kg)*	23,450 lb (10 850 kg)	21,650 lb* (9 920 kg)*	16,800 lb (7 790 kg)	28' 3" (8.63 m)	19,750 lb* (8 970 kg)*	13,850 lb (6 250 kg)
+10 ft (3 m)			38,350 lb* (17 395 kg)*	33,200 lb (15 060 kg)	27,950 lb* (12 910 kg)*	22,200 lb (10 280 kg)	23,050 lb* (10 600 kg)*	16,200 lb (7 510 kg)	29' 3" (8.92 m)	19,150 lb (9 680 kg)	12,850 lb (5 820 kg)
+5 ft (1.5 m)			37,800 lb* (17 145 kg)*	31,450 lb (14 265 kg)	30,400 lb* (14 040 kg)*	21,200 lb (9 820 kg)	13,750 lb (11 030 kg)	15,650 lb (7 260 kg)	29' 5" (8.95 m)	18,800 lb (8 520 kg)	12,550 lb (5 690 kg)
Groundline			42,350 lb* (19 510 kg)*	30,900 lb (14 360 kg)	31,400 lb* (14 490 kg)*	20,650 lb (9 560 kg)	23,350 lb (10 840 kg)	15,300 lb (7 090 kg)	28' 8" (8.73 m)	19,350 lb (8 770 kg)	12,850 lb (5 820 kg)
-5 ft (-1.5 m)	29,650 lb* (12 940 kg)*	29,650 lb* (12 940 kg)*	40,100 lb* (18 460 kg)*	30,950 lb (14 390 kg)	30,600 lb* (14 120 kg)*	20,450 lb (9 490 kg)	23,300 lb (10 800 kg)	15,250 lb (7 050 kg)	26' 11" (8.22 m)	21,050 lb (9 530 kg)	13,900 lb (6 300 kg)
-10 ft (-3 m)	45,150 lb* (20 750 kg)*	45,150 lb* (20 750 kg)*	35,500 lb* (16 390 kg)*	31,400 lb (14 580 kg)	27,450 lb* (12 720 kg)*	20,700 lb (9 600 kg)			24' 1" (7.38 m)	21,150 lb* (9 610 kg)*	16,350 lb (7 360 kg)
-15 ft (-4.5 m)			26,900 lb* (12 600 kg)*	26,900 lb* (12 600 kg)*	19,930 lb* (9 040 kg)*	19,930 lb* (9 040 kg)*			19' 7" (6.06 m)	19,350 lb* (8 850 kg)*	19,350 lb* (8 850 kg)*

NOTE: \*Lift capacities do not exceed 75% of the minimum tipping load or 87% of the hydraulic lift capacity. Capacities that are marked with an asterisk are hydraulic limited.

# LIFT CAPACITIES

**13 ft 0 in (4.04 m) Arm** Lift capacities calculated using no bucket.

Load (Lift Point) Height	5 ft (1.5 m)		10 ft (3 m)		15 ft (4.5 m)		20 ft (6 m)		25 ft (7.5 m)		30 ft (9 m)		MAXIMUM REACH		
	END	SIDE	END	SIDE	END	SIDE	END	SIDE	END	SIDE	END	SIDE	@	END	SIDE
+30 ft (9 m)													24' 0" (7.46 kg)	11,750 lb* (5 270 kg)*	11,750 lb* (5 270 kg)*
+25 ft (7.5 m)													28' 1" (8.63 kg)	10,850 lb* (4 890 kg)*	10,850 lb* (4 890 kg)*
+20 ft (6 m)									17,000 lb* (7 760 kg)*	17,000 lb* (7 760 kg)*	13,100 lb* (6 650 kg)*	13,050 lb (6 090 kg)	30' 9" (9.42 kg)	10,450 lb* (4 740 kg)*	10,450 lb* (4 740 kg)*
+15 ft (4.5 m)									18,400 lb* (8 450 kg)*	17,250 lb (8 000 kg)	17,200 lb* (7 860 kg)*	12,850 lb (5 980 kg)	32' 6" (9.92 kg)	10,450 lb* (4 740 kg)*	10,450 lb* (4 740 kg)*
+10 ft (3 m)					31,350 lb* (14 550 kg)*	31,350 lb* (14 550 kg)*	24,050 lb* (11 110 kg)*	22,950 lb (10 640 kg)	20,300 lb* (9 350 kg)*	16,500 lb (7 650 kg)	13,150 lb* (8 310 kg)*	12,450 lb (5 790 kg)	33' 4" (10.17 kg)	10,750 lb* (4 880 kg)*	10,500 lb* (4 750 kg)*
+5 ft (1.5 m)					37,800 lb* (17 510 kg)*	32,550 lb (15 100 kg)	27,500 lb* (12 710 kg)*	21,600 lb (10 020 kg)	22,250 lb* (10 250 kg)*	15,750 lb (7 300 kg)	18,150 lb (8 430 kg)	12,050 lb (5 600 kg)	33' 6" (10.2 kg)	11,350 lb* (5 160 kg)*	10,200 lb (4 640 kg)
Groundline			20,550 lb* (9 040 kg)*	20,550 lb* (9 040 kg)*	41,350 lb* (19 090 kg)*	30,950 lb (14 380 kg)	29,950 lb* (13 810 kg)*	20,600 lb (9 560 kg)	23,250 lb (10 790 kg)	15,150 lb (7 030 kg)	17,800 lb (8 260 kg)	11,750 lb (5 450 kg)	32' 10" (10 kg)	12,400 lb* (5 630 kg)*	10,350 lb (4 690 kg)
-5 ft (-1.5 m)	19,600 lb* (8 780 kg)*	19,600 lb* (8 780 kg)*	30,150 lb (13 350 kg)*	30,150 lb (13 350 kg)*	41,850 lb* (19 310 kg)*	30,350 lb (14 090 kg)	30,800 lb* (14 220 kg)*	20,050 lb (9 310 kg)	22,850 lb (10 600 kg)	14,800 lb (6 860 kg)	17,600 lb (8 170 kg)	11,550 lb (5 360 kg)	31' 4" (9.57 kg)	14,100 lb* (6 380 kg)*	10,950 lb (4 950 kg)
-10 ft (-3 m)	30,600 lb* (13 660 kg)*	30,600 lb* (13 660 kg)*	43,050 lb* (19 040 kg)*	43,050 lb* (19 040 kg)*	39,580 lb* (18 400 kg)*	30,300 lb (14 090 kg)	29,900 lb* (13 810 kg)*	19,950 lb (9 250 kg)	22,750 lb (10 560 kg)	14,700 lb (6 820 kg)			28' 11" (8.85 kg)	17,100 lb* (7 680 kg)*	12,200 lb (5 510 kg)
-15 ft (-4.5 m)	43,700 lb* (19 430 kg)*	43,700 lb* (19 430 kg)*	48,350 lb* (22 410 kg)*	48,350 lb* (22 410 kg)*	35,000 lb* (16 250 kg)*	30,800 lb (14 300 kg)	26,450 lb* (12 330 kg)*	20,250 lb (9 370 kg)	19,550 lb* (9 260 kg)*	15,050 lb (6 960 kg)			25' 4" (7.79 kg)	19,000 lb* (8 620 kg)*	14,850 lb (6 650 kg)
-20 ft (-6 m)			35,650 lb* (16 170 kg)*	35,650 lb* (16 170 kg)*	25,550 lb* (12 120 kg)*	25,550 lb* (12 120 kg)*	19,533 lb* (8 860 kg)*	19,533 lb* (8 860 kg)*					19' 11" (6.19 kg)	17,800 lb* (8 160 kg)*	17,800 lb* (8 160 kg)*

NOTE: \*Lift capacities do not exceed 75% of the minimum tipping load or 87% of the hydraulic lift capacity. Capacities that are marked with an asterisk are hydraulic limited.

## STANDARD EQUIPMENT

### ENGINE

Isuzu AQ-6HK1X  
Tier 4 Final Certified  
Selective Catalytic Reduction – SCR  
Diesel Oxidation Catalyst – DOC  
Cooled Exhaust Gas Recirculation – CEGR  
EGR Coolers  
Six-cylinder turbo-charged diesel  
VGT turbocharger  
Electronic fuel injection  
High pressure common rail system  
Neutral safety start  
Auto-engine warm up  
Glow-plug pre-heat  
Fuel Economy Assist System – FEA  
Engine Protection Feature – EPF  
Dual-stage fuel filtration  
Dual element air filter  
Remote oil filter  
Drain for fuel tank  
Remote engine oil drain  
500-hour engine oil change interval  
24 Volt system  
Engine oil sample port  
Battery disconnect switch  
Air pre-cleaner – Cyclone  
High ambient temperature cooling package  
Emergency engine stop  
External Fuel and DEF gauges  
Fan housing  
Fuel cooler  
Fuel filter restriction indicator  
Fuel shut-off valve  
Idle start  
Radiator, oil cooler, intercooler protective screen

### FUEL ECONOMY SYSTEMS

Engine Idle/Fuel Economy System:  
Auto-idle  
One-touch idle  
Auto-idle shut-down  
BEC – Boom Economy Control  
AEC – Auto Economy Control  
SWC – Swing Relief Control  
SSC – Spool Stroke Control

### HYDRAULICS

Boom/Arm/Bucket/Swing:  
Pilot pressure control system (ISO/SAE control patterns)  
Work mode select:  
1 SP – mode  
2 Power – mode  
3 Eco – mode  
4 Lift – mode  
Travel mode select – 2-speed travel with auto downshift  
Attachment cushion control  
Hydraulic lock – gate lock, left side tilt console  
Custom flow balance adjustment:  
Arm in vs. boom up  
Arm in vs. swing  
Multi-function with electronic pressure and flow control/joystick activated with electronic configurable controls

### UPPER STRUCTURE

ISO mirrors – 3  
Cab ISO-Mounts – fluid and spring  
Upper mounted work lights (5)  
Swivel guard belly pan  
Center cover – over main CV  
Fuel tank belly pan  
Handrail – RH access ISO guard rails  
Lifting eyes for counterweight  
Lockable fuel cap, service doors and toolbox

### ATTACHMENTS

Boom – 21 ft 2 in (6.45 m)  
Arm – 10 ft 8 in (3.25 m)  
Heavy-duty bucket linkage  
Boom mounted work lights (1)  
Auxiliary pipe brackets  
Centralized grease fittings  
Attachment cushion valve  
Arm and boom regeneration  
Bucket anti-clatter device  
Chrome pins  
Easy Maintenance System (EMS) bushings  
Teardrop pin retention keepers

### OPERATOR ENVIRONMENT

Operators cab:  
Smooth and round shape design cab, fabricated by press work  
Safety glass for all windows  
Shock-less cab suspension by 4-point fluid mounting  
Sliding front window with auto lock  
10-in Full-color LCD monitor display with 270-degree camera system  
Membrane switch on monitor display with 5 configurable button on bottom of monitor  
Switch panel – including throttle dial with eco-mode switch  
Windshield wiper & washer  
AM/FM/Bluetooth Radio with hands-free phone  
Sectioned floor mat Polycarbonate roof hatch & Sun shade  
Auto climate control Roll-over protective structure – ROPS Top guard OPG level 1 – in cab structure  
Operator's seat:  
Low frequency air suspension with air springs and double acting hydraulic damper.  
With following features:  
Manual weight adjustment  
Backrest angle adjustment  
Seat height adjustment  
Adjustable armrest – Angle and height  
Adjustable headrest  
Retractable seat belt  
Adjustable lumbar support  
Console mount on suspension  
Control consoles adjust independently of seat  
Others: Rear view mirror – Cab side & Right side Rear

### UNDERCARRIAGE

Long undercarriage 31.5 in (800 mm) steel shoes, triple semi-grouser  
Full overlap turntable bearing tub  
Single track chain guides  
Hydraulic track adjustment  
Sealed link chain  
Steps  
Carbody belly pan – swivel guard  
X-pattern carbody  
Lashing points – tie downs

### TELEMATICS

CASE SiteWatch™ Telematics – includes hardware and a 5-yr Advanced data subscription

### ELECTRICAL SYSTEM

Engine control:  
Dial type throttle control  
One touch idle/Auto deceleration/timed engine shutdown system  
Emergency stop  
Monitor system:  
Message display – Caution, condition  
Work mode display – SP, Power, Eco, Lift  
Machine condition – Power boost, etc.  
Alarm display and buzzer  
Water temperature  
Hydraulic oil temperature  
Fuel level  
Diagnosis system  
Rear & Right-side view camera image  
Urea water level  
Wire harness  
Travel alarm  
Double horn  
Battery  
LED work lights:  
Upper x 5  
Boom x 1  
Cab x 1  
Operator's cab room (halogen) x 1

**OPTIONAL EQUIPMENT**

**ENGINE**

Refueling pump  
Air pre-cleaner – Cyclone  
Hydraulic reversible fan

**HYDRAULICS**

Auxiliary hydraulics:  
Proportionally controlled secondary  
low-flow auxiliary hydraulics  
Hose Burst Check Valve – HBCV

**MACHINE CONTROL**

Leica iCON iXE2 – 2D System  
Leica iCON iXE3 – 3D System

**ATTACHMENTS**

Heavy-duty boom – 21 ft 2 in (6.45 m)  
Short arm – 8 ft 8 in (2.63 m)  
Heavy-duty arm – 10 ft 8 in (3.25 m)  
Long arm – 13 ft 3 in (4.04 m)  
Quick coupler/Case multi-pin grabber  
Tools:  
Heavy-duty/Extreme-duty/Ditching  
Buckets; Hammers; Thumbs;  
Compaction plates.

**UPPER STRUCTURE**

Rubber bumper guard – order through  
Service Parts  
Catwalk – left and right side

**UNDERCARRIAGE**

33.5 in (850 mm) steel shoes,  
triple semi-grouser

**OPERATOR ENVIRONMENT**

FOPS cab top guard – Level 2  
Front grill guard – 2 x 2 in (50.8 x 50.8 mm)  
screen mesh  
Front rock guard – vertical bars  
Two piece/OPG 1  
Front rock guard – vertical bars  
One piece/OPG 2  
Vandal guard (front window) with  
common key  
Side-view camera

