



CASE
CONSTRUCTION

HYDRAULIC EXCAVATORS



CX145C SR

MAIN REASONS TO CHOOSE THE C-SERIES

FULL SPECIFICATION EXCAVATORS

- Wide offering of auxiliary hydraulics (multi-function and low flow)
- Undercarriage equipped with the blade as standard
- Standard/Offset boom to fulfill any customer need

BEST IN CLASS PRECISION AND CONTROLLABILITY

A very smooth control to get the job done easily
and in total safety

HIGH RELIABILITY

Robust design, high
quality components
and durable materials



GREAT VERSATILITY

- 3 available power modes to match customers needs (A, H, SP)
- Auto Power boost job-sensing hydraulic pressure increase

HIGH EFFICIENCY

- CASE Intelligent Hydraulic System (CIHS), in combination with the powerful Tier 3 diesel engine, leads to fuel savings of up to 9% compared to the previous model
- Short Radius design, ideal for any jobsite where space is limited



COMFORTABLE AND SAFE CAB

- Certified ROPS and FOPS level 2 cab
- Larger cab with multi-adjustable suspension seat and increased foot space
- Improved air conditioning system
- Wide glazed area for an outstanding visibility

FAST CYCLES

Pump Torque Variable Control provides perfect control of the engine and hydraulic system, further boosting productivity

SAFE OPERATION AND MAINTENANCE

- All filters grouped together for an easy and safe access from the ground
- Standard EMS bushing cut greasing intervals to every 1,000 hours

C-SERIES

HYDRAULIC EXCAVATORS

SHORT SWING RADIUS

The new CX145C SR is the perfect machine for road construction, bridges projects and urban construction sites, any jobsite where space is limited without the risk of machines damage.

ROBUST QUALITY

The short radius machines continue a CASE tradition of robust design and high quality build. By bringing together the highest quality components and materials in a machine that has been designed to work productively, CASE has further improved reliability and durability, reducing ownership costs and cutting downtime for the customer.



OPTIONAL OFFSET BOOM

The optional Offset boom allows the operator to enlarge the working range staying in the same position, improving the capability to work in narrow and restricted spaces and along the walls.





PERFORMANCE AND EFFICIENCY

The CASE Intelligent Hydraulic System (CIHS) incorporates a host of energy saving, performance enhancing functions to boost efficiency and machine output. A simple operating mode dial delivers three working modes with Super Power set to provide maximum horsepower and hydraulic output. A Powerboost function provides an 8 second boost for maximum digging performance. 5 Energy saving functions allow to optimise performances reducing the fuel consumption depending on the working conditions.

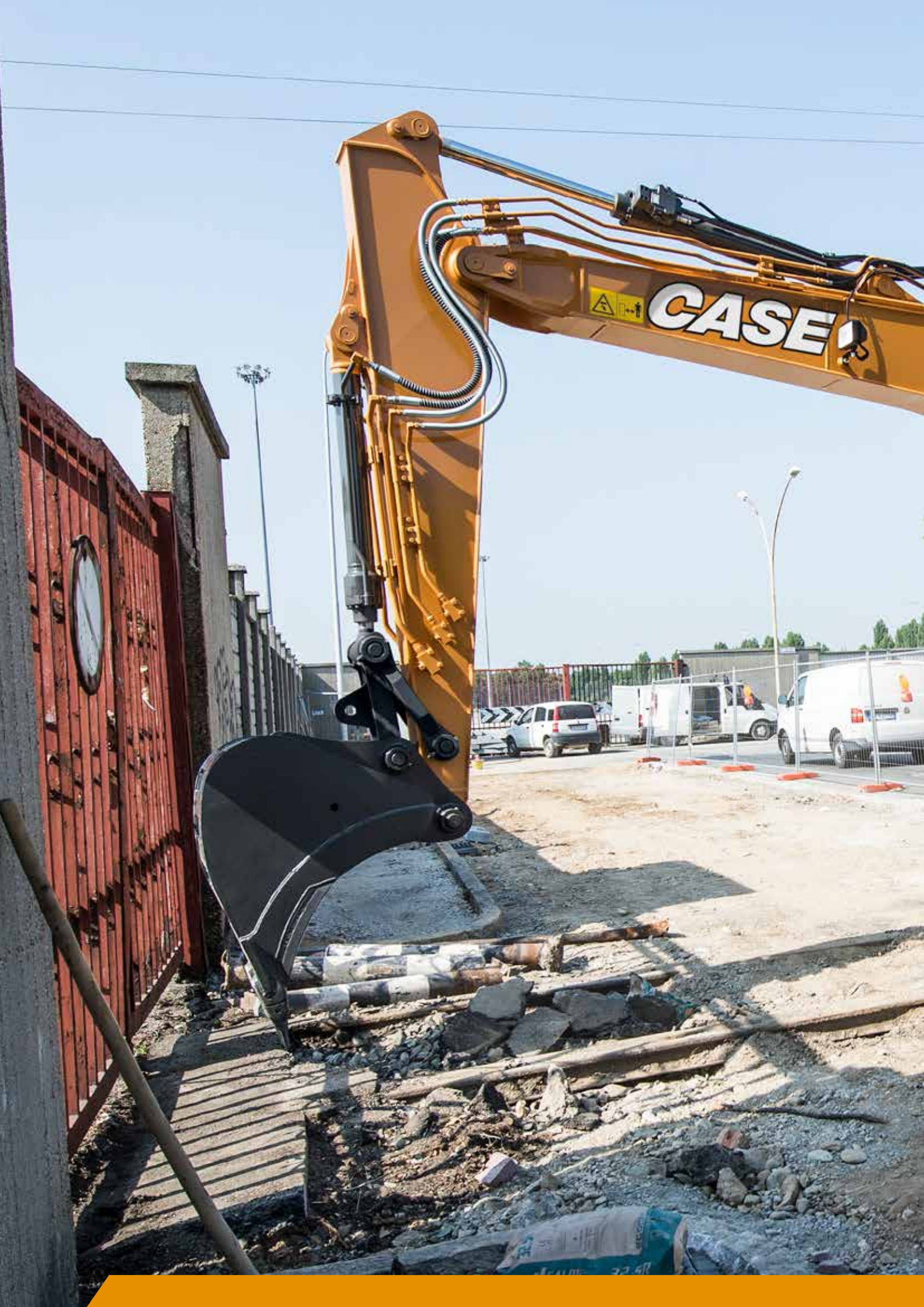
OPERATOR COMFORT AND SAFETY

ROPS and FOPS Level 2 cab delivers an almost automotive noise level. Efficient air conditioning system, multi-adjustable suspension seating, increased foot space, cup holder and storage compartments deliver the most productive working environment possible. The new full-colour Multifunction Display provides access to on-board diagnostics, reducing downtime for service and maintenance. An ECO gauge provides a constant real-time recording of fuel consumption.



SIMPLIFIED MAINTENANCE

A redesigned upper structure provides access to all service points from ground level, with large side opening access doors. All filters are grouped together for easy access, reducing service time. A synthetic filter extends hydraulic oil service intervals to 5,000 hours while engine oil change intervals are set at a competitive 500 working hours. In addition remote greasing points and standard EMS bushings cut greasing intervals to every 1,000 hours. Side-by-side coolers and radiators are easily accessed for cleaning and maintenance.





C-SERIES

HYDRAULIC EXCAVATORS

ENGINE

Model _____ Tier 3 certified ISUZU GJ-A4JJ1X
 Type ___ Water-cooled, 4-cycle diesel, 4-cylinder in line, Turbocharger with air cooled intercooler
 Number of cylinders _____ 4
 Bore/Stroke _____ 95.4 x 104.9 mm
 Horsepower ISO 9249 _____ 70.9 kW at 2000 min-1
 Maximum torque ISO 9249 _____ 340 Nm at 1600 min-1

HYDRAULIC SYSTEM

Max oil flow _____ 2 x 129 l/min @ 2000 min-1
 2 variable displacement axial piston pumps with regulating system
 Working circuit pressure _____
 Boom/Arm/Bucket _____ 343 Bar / 4974.8 PSI
 Boom/Arm/Bucket (with auto power up) _____ 363 Bar / 5264.9 PSI
 Swing circuit _____ 280 Bar / 4061 PSI
 Travel circuit _____ 343 Bar / 4974.8 PSI
 Auxiliary hydraulic flow and pressure for attachments _____ 343 Bar / 4974.8 PSI

SWING

Maximum swing speed _____ 11.2 min-1

WEIGHT

With 2.5 m Arm, 0.5 m³ bucket, operator, lubricant, coolant and full fuel tank and top guard OPG level 2

CX145C SR BLADE WITH STD BOOM	WEIGHT (KG)
500 mm grouser shoe	14,900

TRAVEL

Travel motor _____ Fixed displacement axial piston motor
 Max travel speed _____ 5.6 km/h (Automatic travel speed shifting)
 Low travel speed _____ 3.4 km/h
 Gradeability _____ 70% (35°)
 Drawbar pull _____ 116 kN

ELECTRICAL SYSTEM

Voltage _____ 24 V
 Alternator _____ 50 Amp

UNDERCARRIAGE

Number of carriers rollers (each side) _____ 1
 Number of track rollers (each side) _____ 7
 Number of shoes (each side) _____ 43
 Type of shoe _____ Triple grouser shoe

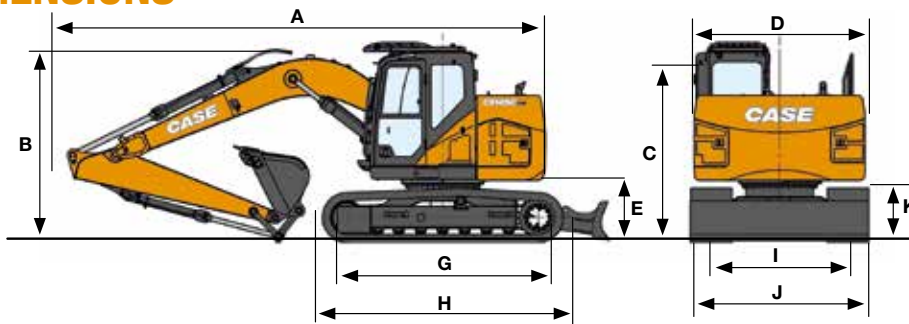
CAPACITIES

Fuel tank _____ 200 ltr
 Hydraulic system _____ 158 ltr
 Cooling system _____ 15.3 ltr
 Noise level inside cab _____ 73 dB(A)

With 2.11 m Arm, 0.45 m³ bucket, operator, lubricant, coolant and full fuel tank and top guard OPG level 2

CX145C SR BLADE WITH OFFSET BOOM	WEIGHT (kg)
500 mm grouser shoe	15,500

GENERAL DIMENSIONS



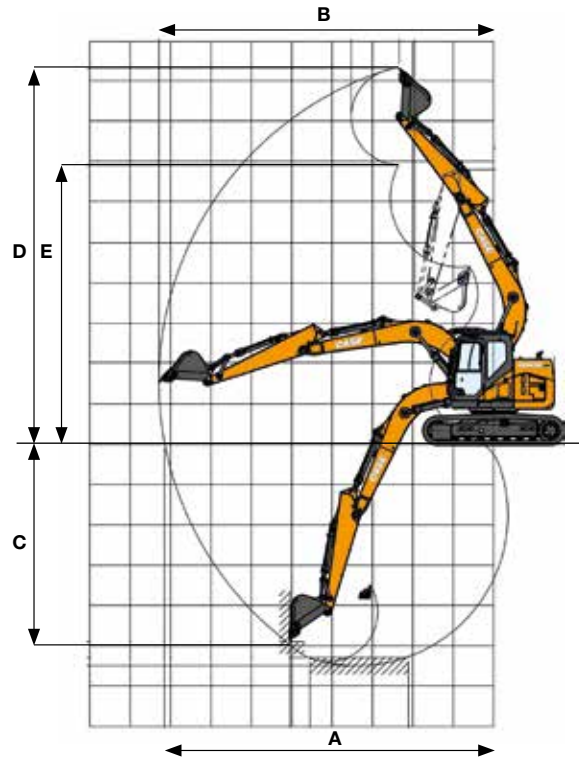
CX145C SR	MONOBOOM ARM 2.50	OFFSET BOOM ARM 2.11	OFFSET BOOM ARM 2.41
Overall length (without attachment)	mm 4160	4160	4160
A Overall length (with attachment)	mm 7880	7540	7610
B Overall height (with attachment)	mm 2900	2900	2900
C Cab height	mm 2900	2900	2900
D Upper structure overall width	mm 2490	2490	2490
Swing (rear end) radius	mm 1490	1490	1490
E Clearance height under upper structure	mm 880	880	880
F Minimum ground clearance	mm 425	425	425
G Wheel base (Centre to Centre of wheels)	mm 2790	2790	2790
H Crawler overall length	mm 3500	3500	3500
I Track gauge	mm 1990	1990	1990
J Undercarriage overall width (with 500 mm shoes)	mm 2490	2490	2490
K Crawler tracks height	mm 780	780	780

BLADE DIMENSIONS AND RANGE

CX145C SR BLADE / OFFSET BOOM	
Blade dimensions (width x height)	2490 x 570 mm
Blade range (up/down)	510 x 520 mm

SPECIFICATIONS

CX145C SR



CX145C SR BLADE		MONOBOOM ARM 2.50	OFFSET BOOM ARM 2.11	OFFSET BOOM ARM 2.41
Boom length	mm	4630	4500	4500
Bucket radius	mm	1200	1200	1200
Bucket wrist action	°	178	178	178
A Maximum reach at GPR	mm	8140	7430	7690
B Maximum reach	mm	8290	7590	7840
C Max. digging depth	mm	5510	4910	5210
D Max digging height	mm	9340	8630	8810
E Max. dumping height	mm	6940	6250	6430

DIGGING FORCE

ISO 6015

CX145C SR BLADE		MONOBOOM ARM 2.50	OFFSET BOOM ARM 2.11	OFFSET BOOM ARM 2.41
Arm digging force	kN	62	59.5	54.4
- with auto power	kN	66		
bucket digging force	kN	90	89.3	89.3
- with auto power up	kN	95		

LIFTING CAPACITY

Front 360°	REACH												
	0 m		1.5 m		3.0 m		4.5 m		6.0 m		7.5 m		At max reach

CX145C SR. Blade Down. Standard arm. 2.50 m arm length, 0.50 m³ bucket (400 kg), 500G shoes, max reach 8.29 m

7.5 m							2360*	2360*					1290*	1290*	5.24	
6.0 m							2950*	2950*	2320*	2320*			1090*	1090*	6.7	
4.5 m							3680*	3680*	2930*	2320	1090*	1090*	1030*	1030*	7.52	
3.0 m						7190*	6990	5210*	3580	3860*	2200	2300*	1460	1030*	1030*	7.92
1.5 m						9690*	6280	6250*	3300	4660*	2070	2760*	1400	1100*	1100*	8
0 m			2760*	2760*	8330*	5780	6640*	3070	4790*	1960	2470*	1350	1230*	1230	7.77	
-1.5 m			5160*	5160*	9610*	5730	6420*	2970	4560*	1910			1490*	1430	7.22	
-3.0 m			8080*	8080*	7820*	5850	5360*	3030	3430*	1980			2040*	1820	6.26	
-4.5 m					4370*	4370*	2560*	2560					2110*	2110*	4.69	

CX145C SR. BLADE DOWN. Offset boom, 2.11 m arm length, 0.45 m³ bucket (350 kg), 500G shoes, max reach 7.59 m

7.5 m														1790*	1790*	3.95
6.0 m							2430*	2430*						1530*	1530*	5.82
4.5 m						3290*	3290*	3220*	3220*	2450*	2290			1500*	1500*	6.76
3.0 m						6540*	6540*	4680*	3560	3140*	2160			1560*	1480	7.22
1.5 m						8500*	5860	5620*	3180	4190*	1980			1700*	1380	7.31
0 m						7240*	5300	5940*	2880	4290*	1840			1980*	1400	7.06
-1.5 m			4940*	4940*	8630*	5280	5750*	2760	4040*	1790				2550*	1610	6.44
-3.0 m			7040*	7040*	7010*	5470	4730*	2880						3440*	2190	5.34

CX145C SR. BLADE DOWN. Offset boom, 2.41 m arm length, 0.37 m³ bucket (340 kg), 500G shoes, max reach 7.84 m

7.5 m														1690*	1690*	4.45
6.0 m							2370*	2370*	1740*	1740*				1470*	1470*	6.15
4.5 m						2720*	2720*	2840*	2840*	2250*	2250*			1450*	1450*	7.04
3.0 m						6050*	6050*	4110*	3580	2930*	2180			1500*	1400	7.47
1.5 m						8140*	6040	5450*	3220	4010*	2000	2850*	1320	1640*	1300	7.56
0 m						7660*	5360	5910*	2890	4280*	1840			1900*	1310	7.31
-1.5 m			4580*	4580*	8530*	5220	5810*	2730	4140*	1760				2410*	1480	6.72
-3.0 m			6940*	6940*	7460*	5380	5010*	2810						3400*	1950	5.68
-4.5 m					4400*	4400*								3080*	3080*	3.91

CX145C SR. BLADE UP. Standard boom. 2.50 m arm length, 0.50 m³ bucket (400 kg), 500G shoes, max reach 8.29 m

7.5 m							2360*	2360*						1290*	1290*	5.24
6.0 m							2950*	2950*	2320*	2320*				1090*	1090*	6.7
4.5 m							3680*	3680*	2930*	2320	1090*	1090*	1030*	1030*	7.52	
3.0 m						7190*	6990	5210*	3580	3860*	2200	2300*	1460	1030*	1030*	7.92
1.5 m						9690*	6280	6250*	3300	4660*	2070	2760*	1400	1100*	1100*	8
0 m			2760*	2760*	8330*	5780	6640*	3070	4790*	1960	2470*	1350	1230*	1230	7.77	
-1.5 m			5160*	5160*	9610*	5730	6420*	2970	4560*	1910			1490*	1430	7.22	
-3.0 m			8080*	8080*	7820*	5850	5360*	3030	3430*	1980			2040*	1820	6.26	
-4.5 m					4370*	4370*	2560*	2560					2110*	2110*	4.69	

CX145C SR. BLADE UP. Offset boom, 2.11 m arm length, 0.45 m³ bucket (350 kg), 500G shoes, max reach 7.59 m

7.5 m														1790*	1790*	3.95
6.0 m							2430*	2430*						1530*	1530*	5.82
4.5 m						3290*	3290*	3220*	3220*	2450*	2190			1500*	1500*	6.76
3.0 m						6550*	6550*	4600	3390	2830	2050			1560*	1400	7.22
1.5 m						8490	5550	4270	3010	2650	1880			1700*	1300	7.31
0 m						7270*	5000	3950	2720	2490	1740			1910	1320	7.06
-1.5 m			5060*	5060*	7810	4990	3820	2600	2440	1680				2190	1510	6.44
-3.0 m			7090*	7090*	7010*	5180	3920	2720						2970	2060	5.34

CX145C SR. BLADE UP. Offset boom, 2.41 m arm length, 0.37 m³ bucket (340kg), 500G shoes, max reach 7.84 m

7.5 m														1690*	1690*	4.45
6.0 m							2370*	2370*	1740*	1740*				1470*	1470*	6.15
4.5 m						2720*	2720*	2840*	2840*	2250*	2230*			1450*	1450*	7.04
3.0 m						6050*	6050*	4110*	3450	2850	2090			1500*	1340	7.47
1.5 m						8140*	5740	4350	3080	2680	1910	1800*	1260	1640*	1230	7.56
0 m						7660*	5080	3990	2750	2510	1750			1810	1250	7.31
-1.5 m			4580*	4580*	7680	4940	3810	2590	2430	1670				2040	1410	6.72
-3.0 m			6940*	6940*	7460*	5100	3880	2670						2680	1850	5.68
-4.5 m					4400*	4400*								3080*	3080*	3.91

* Hydraulic capacity 87%

STANDARD AND OPTIONAL

ENGINE

Isuzu 4-cylinder turbodiesel in line
Certified Tier 3
Electronic fuel injection
High pressure common rail system
Variable geometry turbo charger
Cooled Exhaust Gas Recirculation (CEGR)
Neutral safety start
Auto-engine warm up, emergency stop
Glow-plug pre-heat
Idle System:
Auto-idle
One-touch idle
Idle shut-down
EPF (Engine Protection Feature)
Dual-stage fuel filtration
Dual element air filter
Remote oil filter
Green plug oil drain
500-hour engine oil change interval
Refuelling Pump

HYDRAULICS

Auto power boost
Auto swing priority
Auto travel speed change
Selectable work modes
Overload warning device
SWC - SWING RELIEF CONTROL
SSC - SPOOL STROKE CONTROL
BEC - BOOM ECONOMY CONTROL
AEC - AUTO ECONOMY CONTROL
SEC - SWING ECONOMY CONTROL
ISO pattern controls
Pre-set auxiliary pump settings

Switch controlled auxiliary selection
Auxiliary valve
Auxiliary pipe brackets
5,000 hour hydraulic oil change interval
1,000 hour hydraulic filter change interval
Hydraulic track adjustment
SAHR brake

UPPERSTRUCTURE

Common key vandal locks
Swivel guard belly pan
Rear view safety camera
Isolation mounted cab (fluid and spring)

ATTACHMENT

Boom mounted work light (70 watt)
Auxiliary pipe brackets
Centralised lube bank
Attachment cushion valve
Arm and boom regeneration
Standard boom 4.63 m
Arm 2.50 m
Arm and boom hose burst check valves
EMS bushings
Safety valves on boom and arm cylinders with overload warning device

OPERATOR STATION

ROPS/FOPS level 2 cab
Pressurised cab
Tempered safety glass
One-touch lock front window
Sun visor & rain deflector

AC/heat/defrost w/ auto climate control
Cup holder & ashtray
Interior dome light
Cloth covered air-suspension seat
Seat-belt
Adjustable armrests
Low-effort controls (short)
Radio mute switch on control lever
Controls pre-wired for auxiliary
Auxiliary select system
Straight travel
Aux-in port for personal electronics
Multifunction colour monitor
Rear-view camera
Anti-theft system (start code system)
Rubber floor mat
12-volt electric socket
24-volt cigarette lighter
One-piece right hand window
2 internal & 3 external view mirrors
2 working lights (boom & upperstructure)
2 cab top working lights
Windshield wiper / washer
Clear (Lexan) roof window w/sunshade
Storage compartments
On-board diagnostic system

UNDERCARRIAGE

500 mm steel shoes, triple semigrouser strutted and sealed link
Full overlap turntable bearing tub
Single track guide

Standard and optional equipment shown can vary by country.



BUILDING A STRONG CASE.

Since 1842, at CASE Construction Equipment we have lived by an unwavering commitment to build practical, intuitive solutions that deliver both efficiency and productivity.

We continually strive to make it easier for our customers to implement emerging technologies and new compliance mandates.

Today, our global scale combined with our local expertise enables us to keep customers' real-world challenges at the centre of our product development.

The vast CASE dealers' network is always ready to support and protect your investment and exceed your expectations, while also providing you with the ultimate ownership experience.

Our goal is to build both stronger machines—and stronger communities. At the end of the day, we do what's right for our customers and our communities so that they can count on CASE.

CASECE.com

NOTE: Standard and optional fittings can vary according to the demands and specific regulations of each country. The illustrations may include optional rather than standard fittings - consult your CASE dealer. Furthermore, CNH Industrial reserves the right to modify machine specifications without incurring any obligation relating to such changes.

Conforms to directive 2006/42/EC

