

AFS ACCUGUIDE AND FIELD XPLORER



CASE IH

CASE IH AUTO GUIDANCE

All Austoft 9000 Harvester are built ready with the latest innovations in Sugarcane production. Case IH auto guidance, known as AFS AccuGuide, is one of these innovations.

A factory ordered option, AFS AccuGuide technology enables automatic steering of your harvester with ultimate precision along every row thanks to our high performance AFS GPS receiver and steering controller.



BENEFITS

- **Peace of mind** with repeatably accuracy thanks to superior GPS technology onboard.
- **Intuitive operation** through the familiar AFS Pro700 Display operators can easily enable auto steering functions.
- **Improve operator performance** using automated steering, allowing the operator to concentrate on harvesting functions.

DID YOU KNOW WE OFFER AUTO GUIDANCE SOLUTIONS FOR ALL BRANDS, NOT JUST CASE IH?

Planting with auto guidance can unlock even more potential from your production. Using our mixed fleet packages, for old or new tractors, enables automated custom planting rows for each field.

Complete with a high resolution display, auto steering controller and an advanced GPS receiver to ensure easy planting accuracy across every single row.

BENEFITS

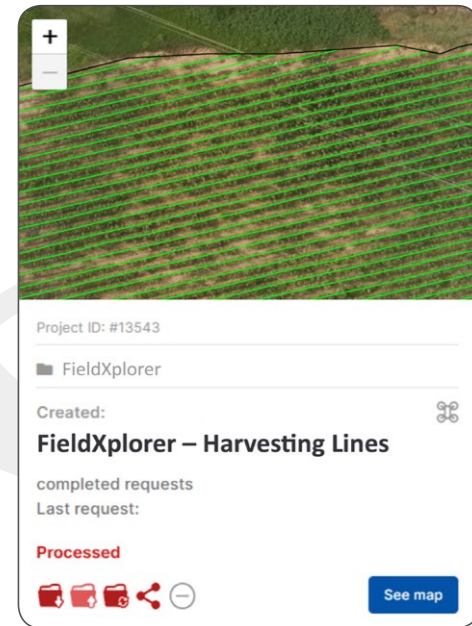
- **Simple operation** thanks to seamless data compatibility between harvester and planter auto guidance system.
- **Mixed fleet support** provides you with the right solution across any brand of equipment you own.
- **Improved field health** by reducing compacted ground and disturbed soil through repeatable planting paths.



HARVESTING LINES

Using a GPS enabled drone, images of the crop are captured and converted using the FieldXplorer platform into guidance lines for harvesting operations.

This allows immediate implementation of the investment into auto guidance resulting in fast returns through improved harvester operation and reduced crop damage.



BENEFITS

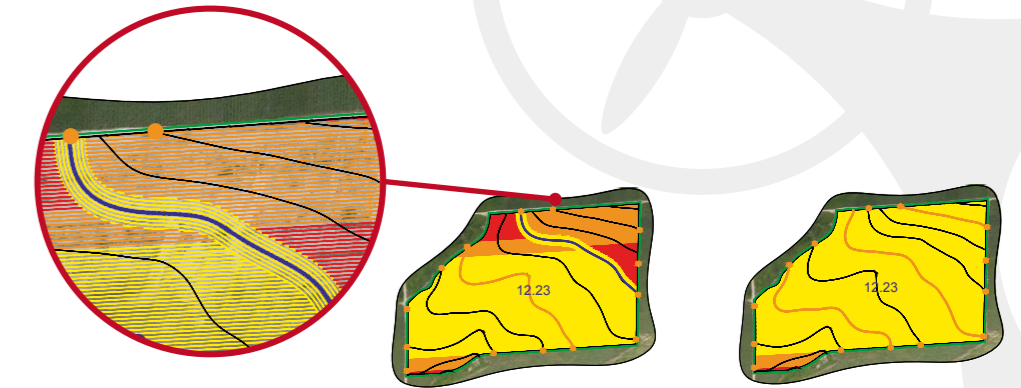
- **Fast return on investment** by greater utilization of guidance equipment.
- **Less sugarcane damage** by auto steering the harvester along with precise path.
- **Reduce expensive machinery damage** by simplifying harvesting operation.



PLANTING LINES

Use FieldXplorer to analyse different planting line configurations, providing an informed choice for the best planting pathways to be used. The selected configuration is then exported to the auto guidance system in the tractor.

This results in an optimized planting plan for each field that promises higher production of sugarcane.



	OPTION 1	OPTION 2
Avg Run Length (m)	240	377
Number of Lines	170	108 (36% less turns)
Total Line Length (m)	40,725	40,731 (same area planted)

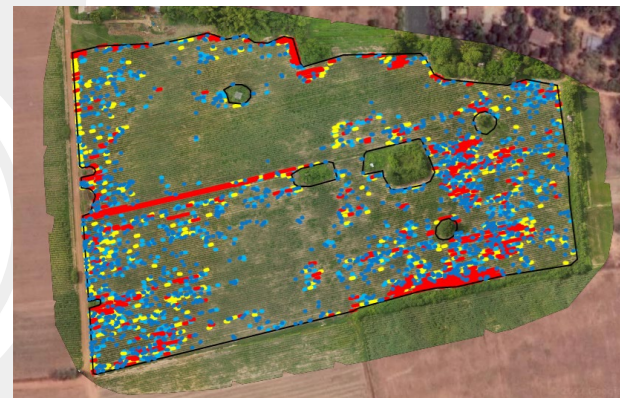
BENEFITS

- **Plant more sugarcane** by optimizing land use.
- **Improve vehicle efficiency** by maximizing crop row lengths, reducing time spent turning.
- **Optimize water flow** across the field through calculated positioning of crop rows with respect to the land slope.

PLANTING FAILURES

Precision imagery is used to pin-point planting failures across an entire field.

This powerful data can be used to assess and act on crop efficiency, replanting decisions and operator performance.



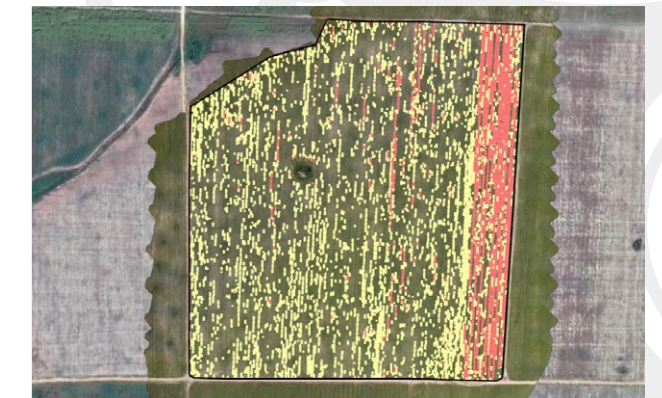
BENEFITS

- **Faster decision making** by surveying large areas for production efficiency.
- **Optimize replant decision** from data driven reports generated on total losses.
- **Increase field productivity** by replanting gaps soon after harvest or planting.
- **Reduced planting failure** by optimizing operator performance.



SPACING QUALITY

FieldXplorer calculates quality of spacing between each row. Use the results to evaluate field productivity by assessing the crop at risk of damage due to poor row spacing.



BENEFITS

- **Minimize losses** by identifying crop at risk of being crushed.
- **Measure planting performance** by using precise spacing quality reports.



AUSTOFT 9000 HARVESTER SOLUTION

Less crop and machine damage, improved operator performance and fast payback with this complete end-to-end solution to automate harvesting with the Austoft 9000. As a complete solution, your Case IH dealers offers installation and training support to deliver in field results.

Case IH, your partner on your path to precision.

INCLUDES:

- Completion kit for auto guidance ready Austoft 9000 – Steering controller & high accuracy receiver
- FieldXplorer credit
- Standard installation*
- Guidance operator training*
- FieldXplorer application training*

**Participating dealers only*





PLANTER SOLUTIONS

Improve production efficiency, plant more sugarcane and optimize decision making with this complete end-to-end solution to automate planting. Focused on in field results, your Case IH dealers offers installation and training support to deliver the complete solution.

Case IH, your partner on your path to precision.

INCLUDES:

- **Tractor guidance** – XCN-1050, steering controller, EZ-Pilot motor drive, platform kit and high accuracy receiver
- **FieldXplorer credit**
- **Standard installation***
- **Guidance operator training***
- **Fieldxplorer application training***

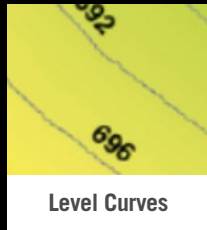
**Participating dealers only*



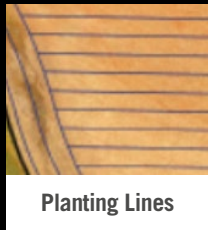
FIELDXPLORER

MORE TO EXPLORE ON YOUR PATH TO PRECISION

PLANNING REPORTS



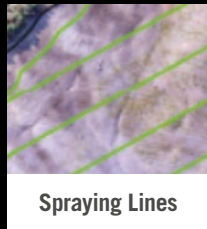
Level Curves



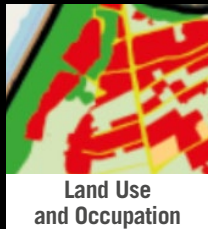
Planting Lines



Water Flow

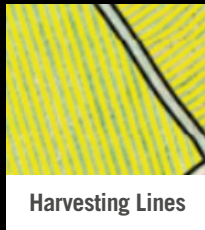


Spraying Lines

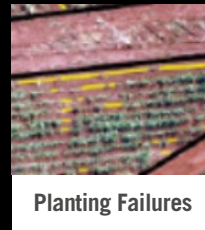


Land Use and Occupation

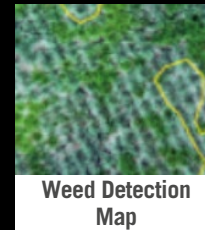
MANAGEMENT REPORTS



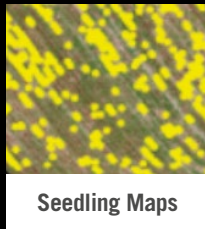
Harvesting Lines



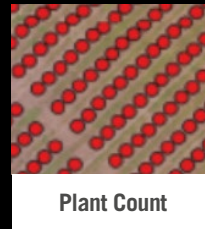
Planting Failures



Weed Detection Map



Seedling Maps

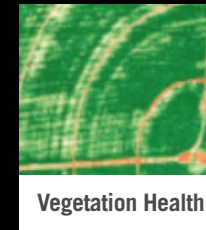


Plant Count



Spacing Quality

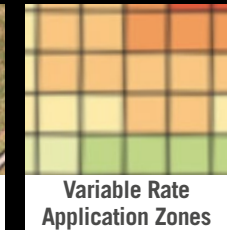
MONITORING REPORT



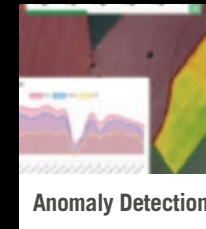
Vegetation Health



Stand Count



Variable Rate Application Zones



Anomaly Detection



Nitrogen Variable Prescription Map (N)



Cotton Growth Regulator (PIX)



Defoliant



CNH Industrial Asia Pacific

Safety never hurts! Always read the Operator's Manual before working with any equipment. Inspect equipment before using it, and be sure it is operating properly. Follow the product safety signs, and use any safety features provided. This literature has been published for worldwide circulation. The standard and optional equipment and the availability of individual models may vary from one country to the next. Case IH reserves the right to undertake modifications without prior notice to the design and technical equipment at all times without this resulting in any obligation whatsoever to make such modifications to units already sold. Whilst every effort is made to ensure that the specifications, descriptions and illustrations in this brochure are correct at the time of going to press, these are also subject to change without prior notice. Illustrations may show optional equipment or may not show all standard equipment. Case IH recommends genuine lubricants. CASE IH Austoft 9000 series brochure - 07/2022

22APACCOMAFS001

CASE IH