

# ZOOM



## GENUINE FUEL FILTER

GET THE BEST OUT OF YOUR MACHINE

CASE IH MAKES THE DIFFERENCE.  
LET'S SEE HOW.



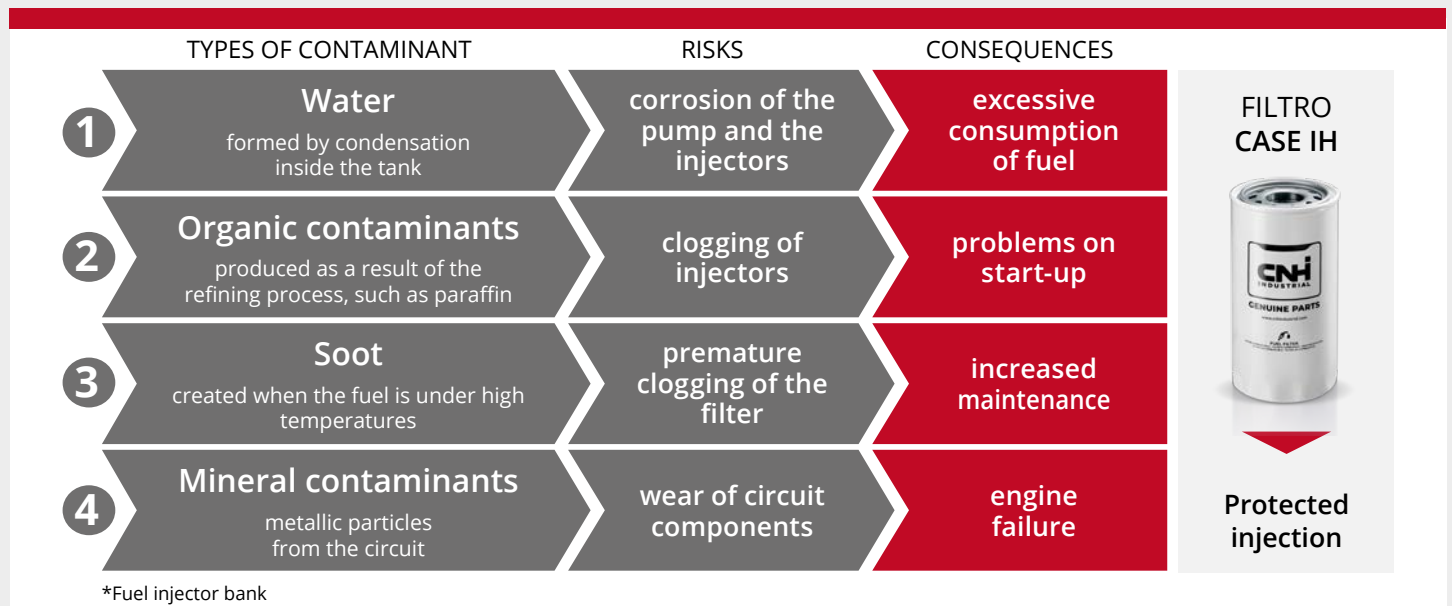
**GENUINE**PARTS  
HIGH PERFORMANCE


**CASE IH**


# The key role played by the fuel filter.

With the increasing prevalence of "common rail" \* systems, the quality of diesel fuel filtration is essential for **the protection and performance of the injection system.**


CASE IH fuel filters are designed specifically for your engine, and ensure the cleanliness of the fuel, removing four types of contaminants:







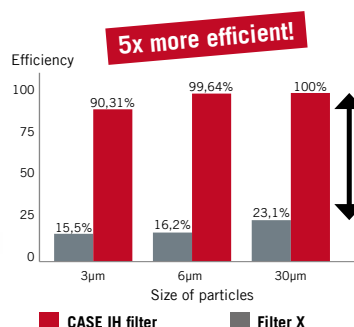
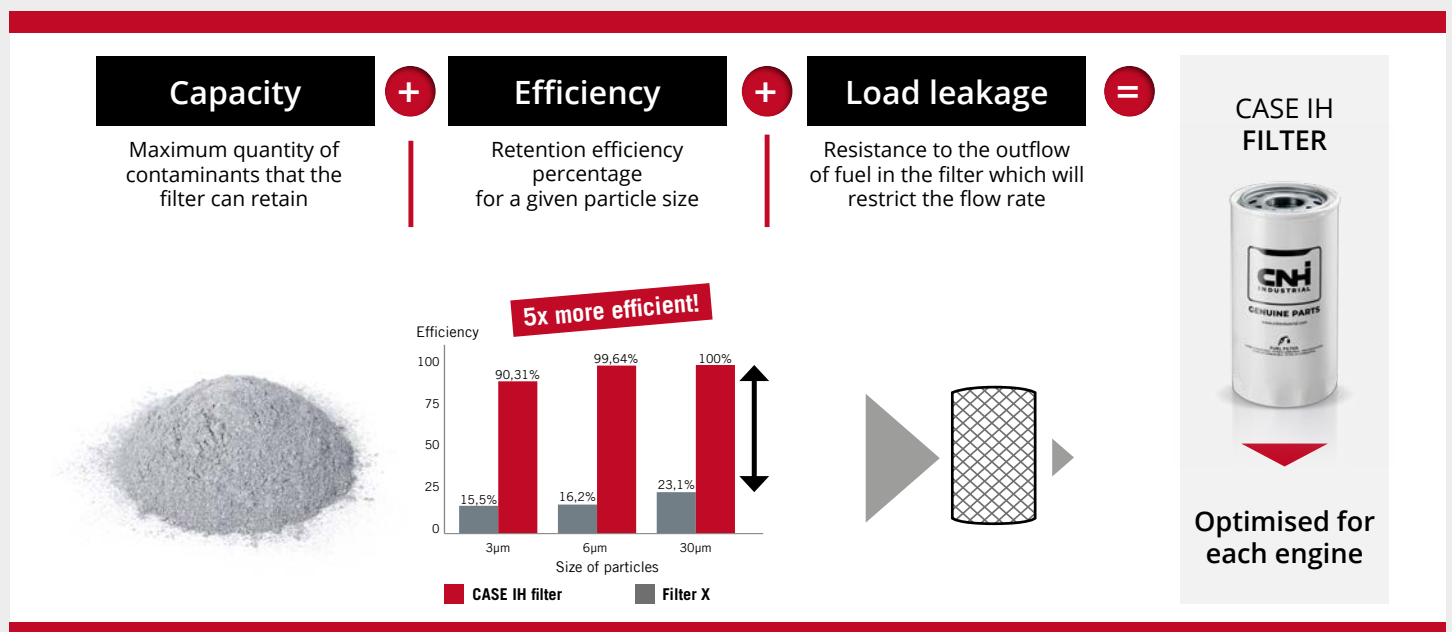
**WHY CHOOSE GENUINE FUEL FILTER?**



## Why choose Genuine CASE IH fuel filter?

### ESSENTIAL PROPERTIES OF A FILTER

CASE IH fuel filters boast three complementary properties:



These three characteristics must be combined in the right measure, so that the fuel circulates and stays clean over time. Only genuine replacement parts can guarantee optimum filtration for your specific usage needs.

## THE FILTERING MATERIAL: A HIGH-TECHNOLOGY ELEMENT

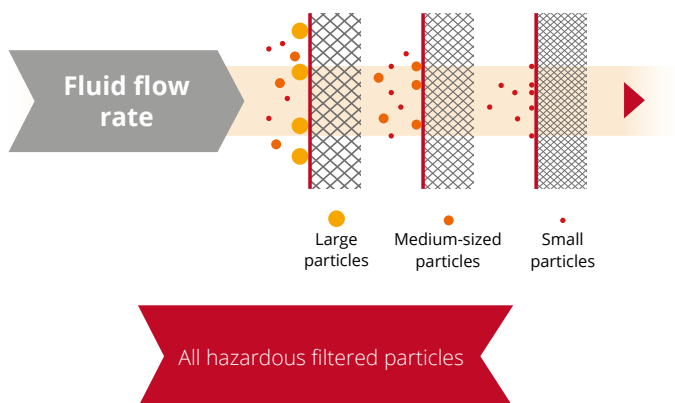
To ensure that these 3 characteristics are present, the quality of the filtering element is crucial. CASE IH uses **a multi-layer filtering material** which stops the majority of particles of all sizes.



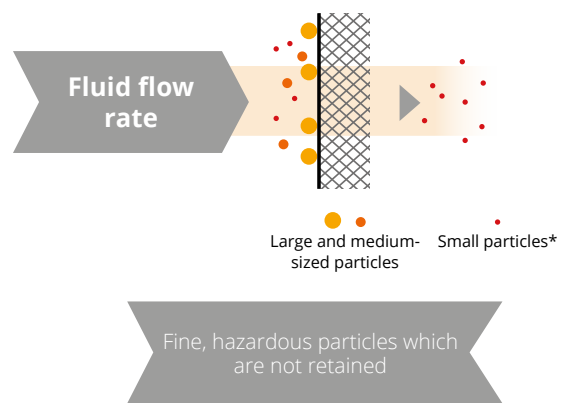
**Reinforced structure of the inner cartridge which prevents leaks and unfiltered fluid from bypassing the filter.**



### CASE IH filter



### Low-quality filter



\* Particles which lead to premature engine wear.

## THE STRUCTURE: THE DIFFERENCE IS ON THE INSIDE

**CASE IH chooses materials that can withstand extreme temperature, vibrations and pressure.**

These conditions, which are subjected to dynamic pressure tests\* in the laboratory, allow us to validate the quality of our products.

### CASE IH filter

**4 000 000 cycles**



Fault free

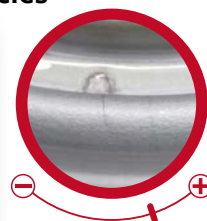


### Low-quality filter

**3099 cycles**



Crack failure =  
fuel leakage



### CASE IH FILTER



**Made to last**

\*Test conducted at a frequency of 10 Hz with pressures varying from 0 to 12 bar, equal to a pressure of 12 kg /cm<sup>2</sup> applied every second.



# Recommendations for use.

## MAINTENANCE INTERVALS

It is recommended that you **change your filter, along with the pre-filter, every 600 hours, or once a year\***.

## USAGE PRECAUTIONS

- If the filter is not packaged, store it upside down to prevent dust from falling into it
- Always handle by the tank
- Lightly oil the joint for ease of tightening

\* Duration generally observed, please refer to your vehicle maintenance manual or the filter booklet for more information.

**IT'S BETTER TO CHANGE A FILTER THAN A BANK OF FUEL INJECTORS!**

## Did you know?

A new filter can contain metal residues left over from the manufacturing process. These residues can cause irreversible damage to your fuel injection system. For this reason, CASE IH produces key components in a controlled environment, and in addition, washes some of these to ensure the best performance of your new filter.



Controlled environment site.

### CASE IH FILTER



**CLEAN  
FILTER**



**At any time, easily and safely  
from the CASE IH web shop**

