

PUMA SERIES

VERSATILITY AND RELIABILITY WITH
PRECISION AGRICULTURE TECHNOLOGY.

MODELS 140 - 155 - 170 - 185



CASE IH

PUMA TRACTORS

In keeping with its strategy of offering complete agricultural mechanization solutions, Case IH is presenting its new line of medium-power tractors in the Puma family.

Made up of four models manufactured in Brazil, these tractors have a nominal power of between 144 and 182 hp and an excellent power-to-weight ratio, guaranteeing efficient and versatile performance, even in harsh conditions and in the most demanding planting or tillage applications.

The great advantage of the new line of Puma tractors is their versatility. Ideal for activities such as soil preparation, planting, cultivation, spraying, and other tasks, always offering the same efficiency and agility. This makes the Puma line the perfect choice for the farmer who needs a multifunctional tractor, capable of carrying out both light and heavy tasks for greater productivity.

In addition, the Puma line offers models that can be equipped with an electronic engine and 18x6 Semi-Powershift transmission.

AVAILABLE MODELS:

- **Puma 140** = 144 hp nominal power
- **Puma 155** = 157 hp nominal power
- **Puma 170** = 167 hp nominal power
- **Puma 185** = 182 hp nominal power

CAB

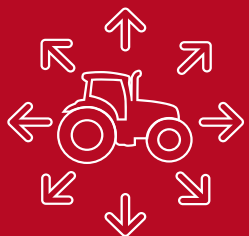
- Larger glazed area
- Suspension with shock absorbers
- Lower noise level
- Multi-function lever with 85% of the controls
- End of line button

HYDRAULIC

- Up to 4 remote valves
- Up to 150 liters/min
- 6,616 kg lifting capacity

TRANSMISSION

- Semi-Powershift
- Operational Ease
- 18x6



**VERSATILITY
WITH EFFICIENCY AND AGILITY**



AFS GUIDE

- Telemetry as standard
- Full pilot (optional)
- New Pro 700 Plus monitor

APM

- Up to 24% fuel savings
- Selects the best gear for the job automatically
- Keeps hydraulic speed and flow constant

AVAILABILITY

- Quality items
- Engine hose seals
- Cab cushion
- Tank vent

NEW HOOD DESIGN

CANE KIT

- Factory warranty
- Gauge up to 3 meters
- Reversible gauges
- Complete solution

MAR-I ENGINE

The machines are equipped with Case IH 6.75 L engines, which have very modern cylinder heads with 4 valves per cylinder (2 intake and 2 exhaust), for a total of 24 valves. This allows for better circulation of intake and exhaust gases and consequently provides more power and high torque.

In addition to electronic injection and multi-valve cylinder heads, the electronic engines in the Puma range are equipped with the well-established and modern Common Rail injection system. This feature consists of a pressurization system that causes the fuel to reach high pressures in the combustion chamber and burn better. As a result, its energy is put to better use, allowing for greater power with reduced fuel consumption.

With electronic engines, the range also features Power Boost as standard, a system that gives the engine an automatic power boost of up to 35 hp, used to overcome heavy demands during work.



New engines with Tier 3 emission level (MAR-I), with iEGR system (with internal gas recirculation).





MOTORIZATION

ENGINE COOLING SYSTEM

This system, which equips Puma tractors, guarantees adequate engine cooling in severe operating conditions. It can be said that the cooling box with three main radiators requires less ventilation power, allowing the engine to dedicate more power to the operations carried out.

VISTRONIC TECHNOLOGY

In this system, which equips the Puma range, the fan speed is adjusted electronically based on temperature sensors, so that the fan only spins at the required speed, thus consuming the right amount of power.

FUEL TANK

- High fuel tank capacity - long periods of work before refueling.
- Capacity (all): 395 liters.



**MORE POWER
FOR OPERATIONS**

SEMI-POWERSHIFT TRANSMISSION

Equipped with the Semi-Powershift Transmission, the Puma tractors have 18 forward speeds and 6 reverse speeds, 3 electrically driven mechanical ranges (with the use of the clutch for shifting), and 6 Powershift speeds (shifting without the use of the clutch).

In the Semi-Powershift Transmission, the electro-hydraulic inverter located on the left side of the steering wheel column changes the forward/reverse direction without using the clutch pedal.

Complementing this advantage, the tractor's electronic system allows the operator to logically and automatically program the transmission between different forward and reverse speeds.





"APM DIESEL SAVER" SYSTEM

The "APM Diesel Saver" is an advanced system that equips the Puma line with Semi-Powershift Transmission, which makes it possible to reduce fuel consumption in certain conditions.

- With the "Field" APM mode active, in soil or slope conditions where greater torque is required, the tractor automatically downshifts, thus overcoming the obstacle, and automatically returning to the working gear, facilitating operation and increasing performance.
- In transport operations, activating the APM "Road" mode automatically selects the gears according to the engine speed and the loads being hauled, thus maintaining the ideal ratio for that operation.

HYDRAULIC SYSTEM

A well-established hydraulic system that aims to meet the higher demand for hydraulic flow is available for the Puma series.

This system has technology that allows for better responses to commands and more precise flow control.

HYDRAULIC LIFTING SYSTEM

Puma tractors have a high lifting system capacity of 6,616 kgf, guaranteeing high performance and maximum productivity with the most modern implements.

- High flow for the category with up to 150 L/min
- Hydraulic valves with flow control
- Four hydraulic valves
- Hydraulic return valve with drain
- Pressure and flow compensated (PFC) pump

 **PRECISE COMMANDS
GREATER FLOW CONTROL**





AXLE SYSTEM

FRONT AXLE

Class IV HD front axle with electro-hydraulic locking.

- Reinforced housing
- Reinforced differential
- Breathing space in the cubes
- Final reduction with 4 planetary gears
- 6.3m turning radius



REAR AXLE

The rear axle has pressurized lubrication, which guarantees maximum lubrication for the axle/transmission assembly even during long working hours.

- Wide gauge adjustment possibilities.
- Settings: 1,528 to 2,698 mm.
- **Standard** rear axle size: 112" long.
- Multi-disc locking differential.
- Final reductions with 3 planetary gears.
- Hydraulically operated disc brakes.

CANE KIT

ADVANTAGES OF THE ORIGINAL FACTORY CASE IH CANE KIT:

- It ensures that the correct gauge is used, avoiding compaction of the cane ratoons;
- It comes factory-assembled and requires no disassembly or adaptation;
- Single axle for both gauge sizes, greater savings for the customer;
- Extended axle tested and approved by Case IH;
- Full factory warranty, according to the equipment's current warranty;
- Pneumatic brake synchronized with the tractor's service brake, no extra control required.

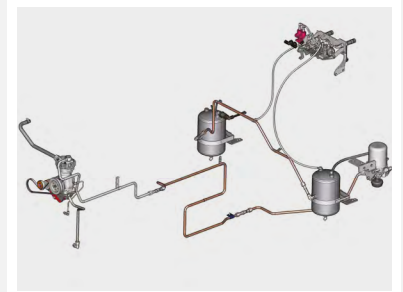
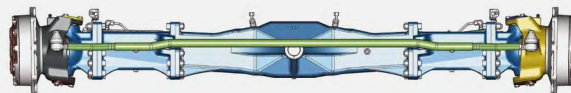




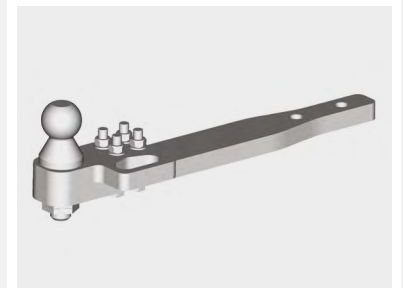
SPECIAL CONFIGURATIONS FOR SUGARCANE APPLICATIONS

The new Puma models are specially designed for the sugarcane sector. In these models, some items are available:

- Predisposition for AFS Guide autopilot.
- Class IV reinforced front axle with a gauge up to 3 meters, ideal for applications in sugarcane plantations, preventing trampling and compaction of the ratoon. The version features a single axle for different applications/balls, without the need to purchase an additional axle, with technology tested by Case IH and a full factory warranty.
- Pneumatic brakes for application with overflows and pin-ball coupling.



Air brake kit



Drawbar with pin-ball coupling

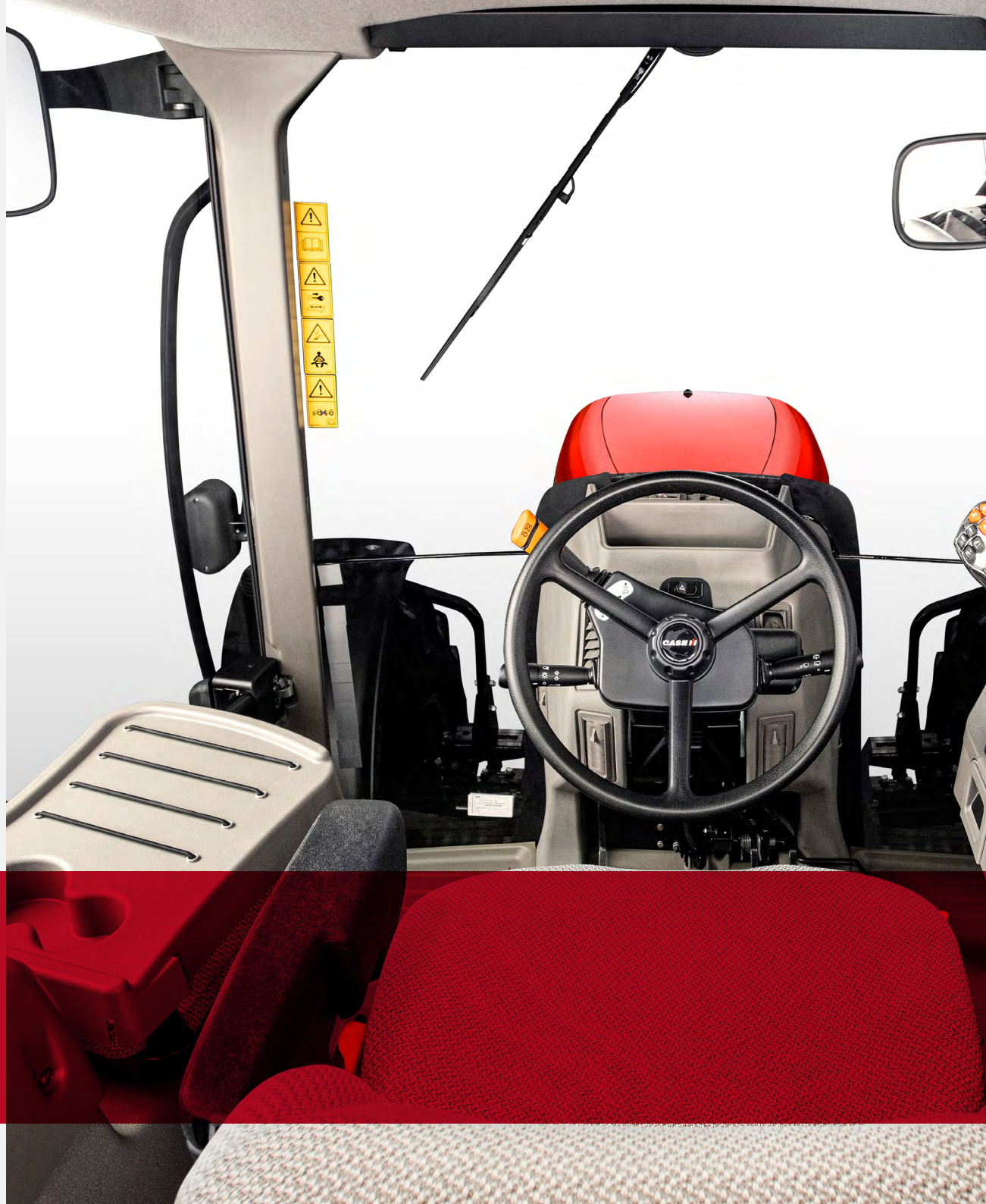
"SURVEYOR" CAB

The Puma's cab is a benchmark for comfort and space. In addition, its glazed area of 5.87 m² allows for superior visibility in any working condition.

The front supports are mounted vertically, and the cab is supported by sets of adjustable shock absorbers and springs, making the machine one of the most comfortable in the segment, without excess vibrations and with a low noise level (reaching 69 dB), which guarantees high productivity without increasing operator stress and fatigue.

In addition, the machines in the new Puma line have a high-tech multifunctional armrest, with easy access and total control of the tractor's various tools and resources.

+COMFORT
GREATER PRODUCTIVITY





The multi-function lever has been designed to fit perfectly in the operator's right hand, giving them total comfort when operating the tractor and access to the main operating functions at their fingertips.

The operator's seat is ultra-comfortable and provides the best possible ergonomics and working position. The models also have an additional seat for instruction, allowing two people to sit safely and comfortably inside the cab.

OPERATIONAL EASE

END-OF-LINE OPERATIONS MANAGEMENT

The electronic system in Puma tractors allows the operator to record certain actions taken during the start and end of a soil preparation line, planting, or other necessary operation. Actions such as raising or lowering the rpm, switching the front-wheel drive or differential lock on or off, raising or lowering the implement when engaged with the hydraulic lifts, can all be recorded. At the touch of a button, the tractor will perform the operations at the recorded times. This is Case IH Technology.



SERVICEABILITY
MAINTENANCE MADE EASY



QUICK AND EASY MAINTENANCE

The **design** of the Puma has been developed to allow easy and quick daily maintenance. The wide hood is supported by strong gas shock absorbers and can be completely opened, making it easy to access and avoiding the removal of side bulkheads, which makes daily checks possible.

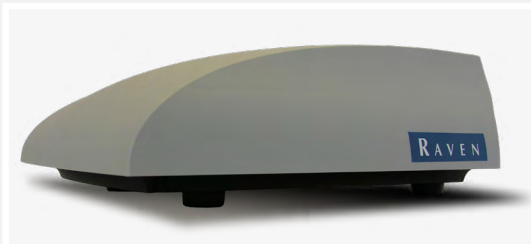
PRECISION TECHNOLOGIES

AUTOPILOT - CASE IH'S PRECISION AGRICULTURE SOLUTION

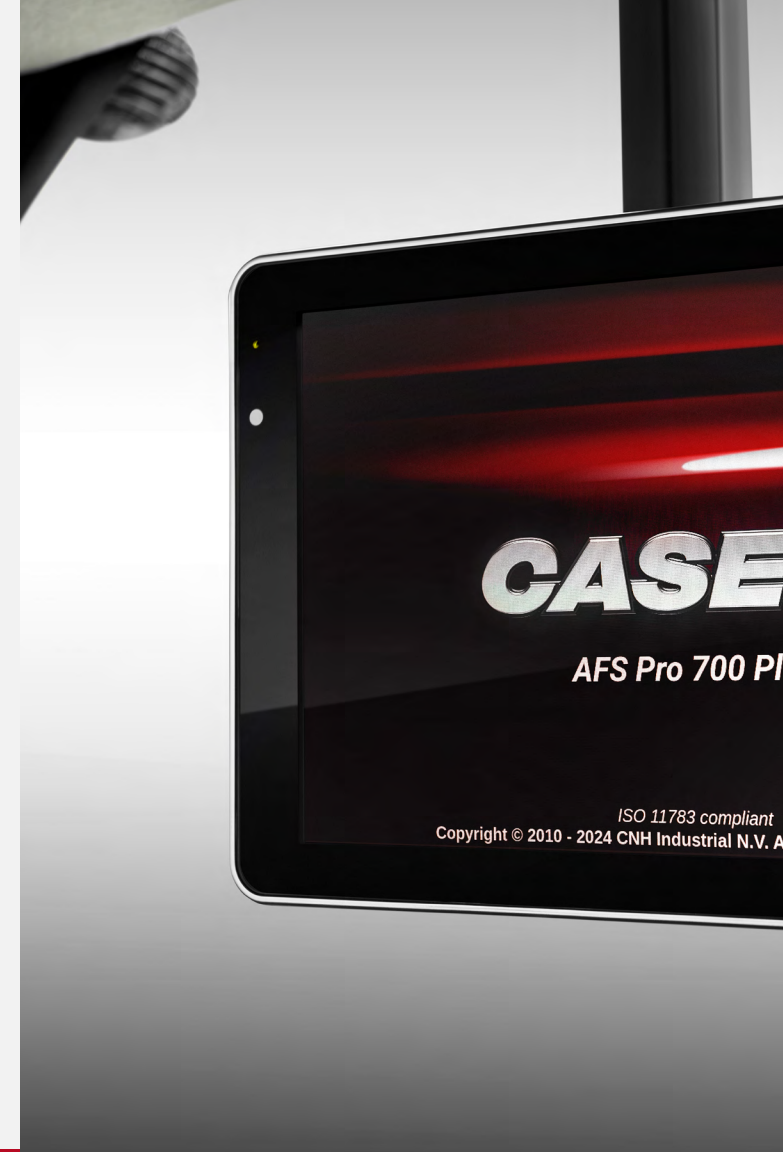
The new Puma range includes models with autopilot capability. Equipped with Case IH technology, these tractors allow the producer to access important data such as fuel consumption and operating performance directly on the computer. With this information, it is possible to generate management reports and make more strategic decisions, increasing the profitability of operations.



Monitor



RS-1 antenna



- Compatible with Pro700 Plus
- All-in-one concept - easy installation
- Integrated steering controller
- Integrated GNSS receiver and antenna
- Easy-to-use calibration wizard
- High-quality steering
- Continuous driving in reverse
- Compatible with ISOBUS 11783
- Virtual terminal
- Programmable timer of up to 24 hours to maintain convergence



REAL-TIME TELEMETRY AND MANAGEMENT IN THE PALM OF YOUR HAND

FOR YOU TO OPTIMIZE DATA COLLECTION AND LEVERAGE ALL THE POSSIBILITIES OF PRECISION AGRICULTURE

Puma tractors set new standards for what connectivity and productivity can bring to your operation. Now you can keep track of your tractor remotely, allowing you to manage and monitor it from a distance, which optimizes time and maximizes results. The project incorporates the renowned Case IH technology into the tractor, increasing efficiency and reducing operating costs through the data and information generated by the tractor.

- Fleet monitoring
- Agronomic management
- Data management
- Real-time information

PRO700 PLUS MONITOR

Here are some of the features:

- Touch screen and intuitive interface.
- The screen size is one of the largest among the competition.
- Allows the operator to monitor the specific functions of the tractor, such as distance traveled and fuel consumption.

The new Pro700 Plus monitor has greater processing capacity than its predecessor, with internal memory changed from 1GB to 16GB and RAM from 256MB to 2GB, while maintaining the same operating interface to facilitate operation in the field.

SPECIFICATIONS

MODEL	Puma 140	Puma 155	Puma 170	Puma 185
ENGINE				
Number of cylinders/type	6/Turbo with intercooler			
Capacity	6.7 liters			
Rated power	144 hp	157 hp	167 hp	182 hp
Maximum power	152 hp	168 hp	174 hp	195 hp
Maximum power with <i>boost</i>	177 hp	193 hp	201 hp	209 hp
Nominal motor speed	2,200 rpm			
Maximum torque (Nm)	643	690	710	760
Maximum torque with <i>boost</i> (Nm)	678	748	778	800
Torque reserve	42%	37%	35%	35%
Fuel tank	395 liters			
TRANSMISSION				
Transmission type	Semi-Powershift 18x6			
Rear differential lock	Electro-hydraulic drive			
Service brake	Self-adjusting oil-bath multi-disks			
FRONT-WHEEL DRIVE				
Type	Electro-hydraulic drive			
Steering angle	55°			
Minimum turning radius	6.1 m			
POWER TAKE-OFF				
Type	Electro-hydraulic drive			
Speeds	540/750/1,000 rpm			
Engine rpm	2,200 rpm			
Axle type	1 3/8" 21 splines 1 3/8" 6 splines			
HYDRAULIC SYSTEM				
Main hydraulic system flow	113 L/min STD (or 150 L/min optional)	113 L/min STD (or 150 L/min)	150 L/min	150 L/min
System pressure	215 bar			
Pump type	PFC - Closed Center			
Maximum lifting capacity at 610 mm	6,616 kg			
Category type	II/III			
Number of remote control valves	3 STD or 4 Optional	3 STD or 4 Optional	4	4

MODEL	Puma 140	Puma 155	Puma 170	Puma 185
WEIGHT				
Minimum weight	6,725 kg			
Total permissible weight	10,500 kg			
Maximum permissible front weight	4,200 kg			
Maximum permissible rear weight	6,300 kg			
DIMENSIONS				
Total length	4,916 mm			
Total height	3,100 mm			
Total width	2,334 mm			
Front gauge adjustment	1,560/2,258 mm or 2,800/3,000 mm			
Rear gauge adjustment	1,528/2,698 mm or 2,800/3,000 mm			
TIRE OPTIONS				
Option 1 Front 16.9-28R1 - 10PR - Bias and Rear 24.5-32R1 - 12PR - Bias	Available	Available	Not available	Not available
Option 2 Front 18.4-26R1 - 12PR - Bias and Rear 24.5-32R1 - 12PR - Bias	Not available	Not available	Available	Available
Option 3 Front 16.9-28R1 - 10PR - Bias and Rear 20.8-38R1 - 10PR DUAL - Bias	Available	Available	Not available	Not available
Option 4 Front 18.4-26R1 - 12PR - Bias and Rear 20.8-38R1 - 10PR DUAL - Bias	Not available	Not available	Available	Available
Option 5 Front 600/55R30.5 A8 - TRELLEBORG and Rear 710/65 R38 A8 - TRELLEBORG	Available	Available	Available	Available
Option 6 Front 540/65 R28 R1W A8 and Rear 650/75 R32 R1W A8	Available	Available	Available	Available
Option 7 Front 14.9-28R2 - 8PR - Bias and Rear 23.1-34R2 - 8PR - Bias	Not available	Not available	Available	Available
Option 8 Front 18.4-26R2 - 10PR - Bias and Rear 20.8-38R2 - 10PR DUAL - Bias	Available	Available	Available	Available

CIH-IO-B1037 - 11/2025



WhatsApp +54 11 2034-1408

Contact for Customer Service.
24 hours per 7 days a week.

caseih.com
CaseIH