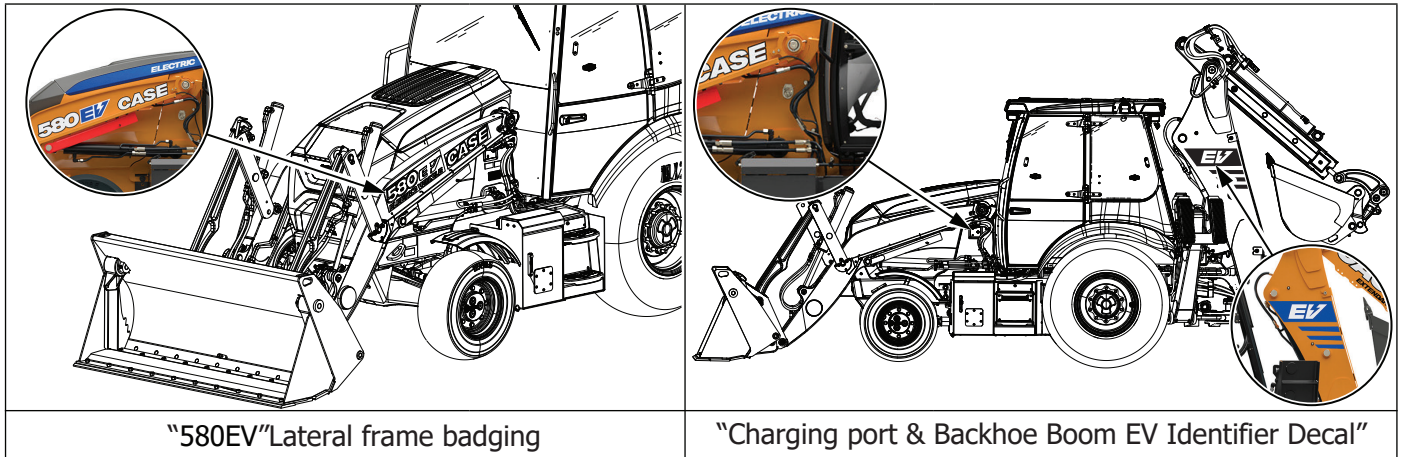


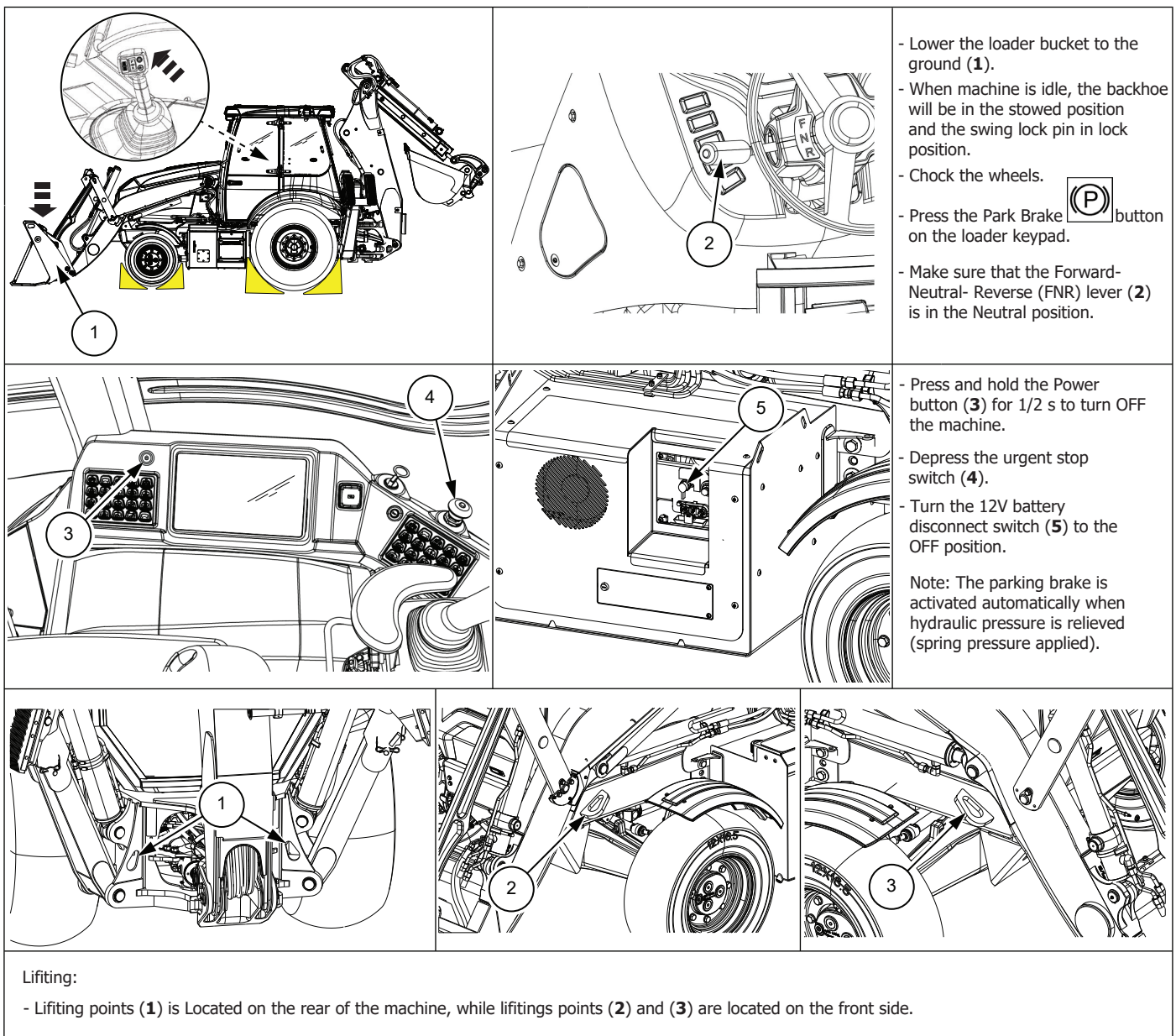
	Battery low voltage		Low voltage Power shutdown able to disconnect High voltage		Accumulator		Steering column adjustment
	Battery High voltage		Gas strut / preloaded spring		Swivel		Seat Backrest tilt adjustment
	Air conditioning component		High voltage component		Seat adjustment- Raise		Seat longitudinal adjustment
	Seat adjustment- Lower						



1 - IDENTIFICATION / RECOGNITION



2 - IMMOBILIZATION / STABILIZATION / LIFTING





3 - DISABLE DIRECT HAZARDS / SAFETY REGULATIONS

<p>In emergency, if accessible:</p> <ol style="list-style-type: none"> 1. Set parking brake and chock the wheels. 2. Press the urgent stop switch (1). 3. If the battery disconnect access door is locked, unlock with the key or pry from the top to open the door. 4. Rotate the 12V battery disconnect switch (2) to the OFF position. <p>Note: The parking brake is activated automatically when hydraulic pressure is relieved (spring pressure -applied).</p>	

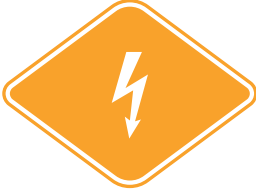
4 - ACCESS TO THE OCCUPANTS

<p>Steering column tilt lever: Push the adjustment lever (1) to adjust the steering wheel.</p>	<p>Seat height: Driver seat Seat adjustment- Raise / Lower (2).</p>
<p>Backrest tilt : Lift the lever to tilt the seat backrest (3).</p>	<p>Swivel / Forward & rearward: Lift the lever to rotate between the normal and the backhoe operation position (5), Lift the lever to move the seat forward or rearward. Release the lever and ensure the seat is locked in position. (6).</p>







5 - STORED ENERGY / LIQUIDS / GASES / SOLIDS

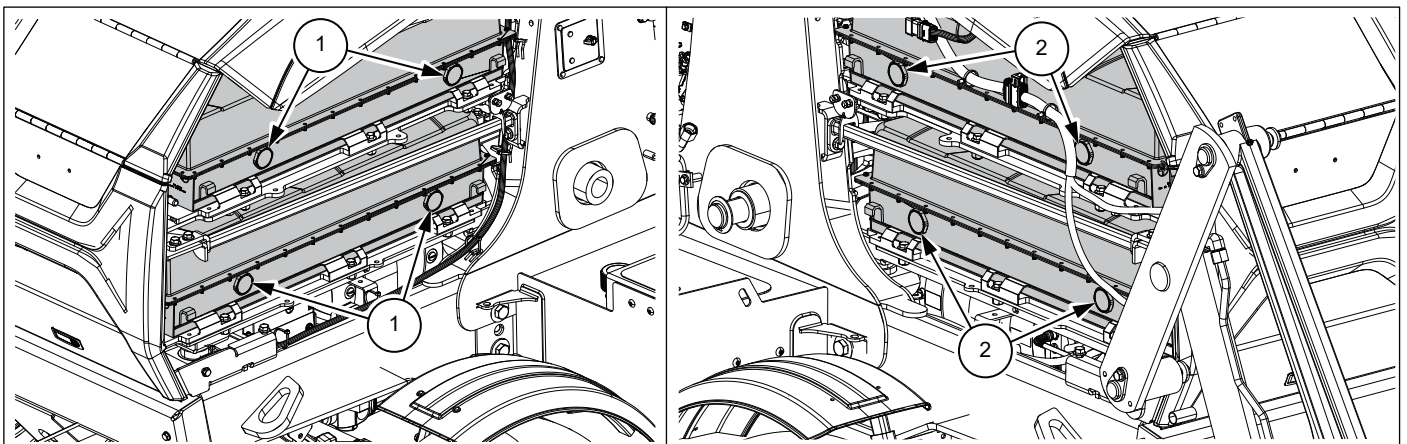
Li-ion battery		Hydraulic oil	
Nominal battery voltage (each)	400 V	Oil type	ISO VG 46, DIN 51524 HVLP 46, Biodegradable, synthetic
Energy capacity (total)	84 kW	Reservoir capacity	30 L (32 US qt)



All the High Voltage cables have orange insulation, DO NOT CUT.

6 - IN CASE OF FIRE

	Use water to extinguish vehicle and cool the heat source(s). To cool the Lithium-ion battery use water.
	Use an ABC, CO ₂ or class D extinguisher in case of fire.
	Monitor the battery pack temperature through the use of a thermal imaging camera and after the fire extinguishment.
	In the event of FIRE where the loader or backhoe are in a raised position- Keep personnel clear off raised implements due to the risk of the implement falling or releasing its load due to hose bursts. Establish a SAFETY PERIMETER around the machine.



If available, use thermal imaging camera to monitor for the presence of fire inside the battery packs. Battery vents are present on the left-hand side (1) and right-hand side (2) of the machine.



7 - IN CASE OF SUBMERSION

If the vehicle is submerged or partially submerged, first pull the vehicle out of water.
Then shut down the high voltage system.



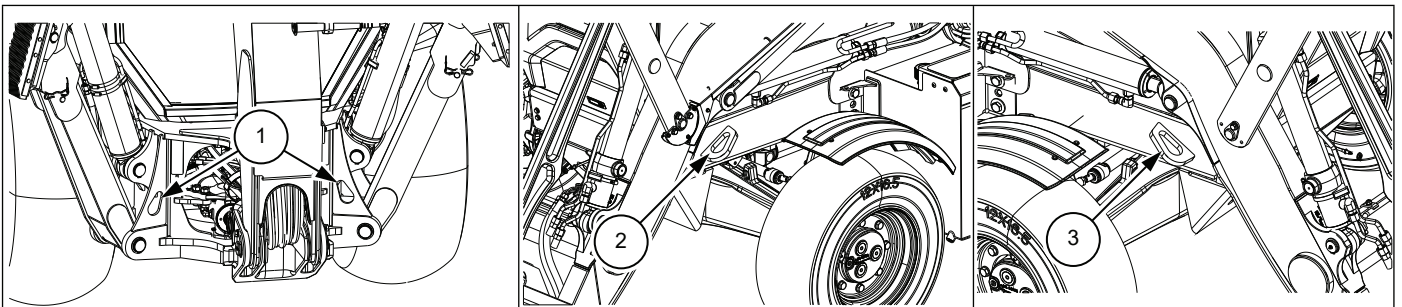
If the vehicle high voltage battery is submerged in water, it may generate flammable hydrogen gas.



Do not touch electrical parts. Risks of severe injury and electric shock.



8 - TOWING / TRANSPORTATION / STORAGE



- To avoid damaging the transmission or other components that turn but are not lubricated during towing, observe the following:
 - . Position all the levers in neutral.
 - . Only tow for short distances.
 - . Keep speed below 8 km/h (5 mph).
- Tow the machine from the rear, using only the Rear tiedown points (1).
- Tow the machine from front using the Front left tiedown point (2), and the Front Right tiedown point (3).



WARNING: Do not cut, breach, or touch High Voltage components or cabling.



All the High Voltage cables have orange insulation, DO NOT CUT.

9 - IMPORTANT ADDITIONAL INFORMATION

N.A.



10 - EXPLANATION PICTOGRAMS USED

	Battery low voltage		Low voltage power Shutdown able to disconnect high voltage
	High voltage component		Battery High voltage
	Steering column adjustment		Gas strut/Preloaded spring
	Electric vehicle		Air conditioning component
	Flammable		Danger of heat
	Use an ABC, CO ₂ class D extinguisher		Corrosive
	General warning		Use water (H ₂ O) to extinguish fire
	Use IR Camera		Warning HV voltage
	High voltage disconnect		Accumulator
	Crush hazard		Seat adjustment-Raise
	Swivel		Seat adjustment-Lower
	Seat longitudinal adjustment		Seat Backrest tilt adjustment