

**CASE II**  
AGRICULTURE

**PATRIOT<sup>®</sup>**

SERIES SPRAYERS





**SUPERIOR APPLICATION QUALITY  
TO MAKE THE MOST OF YOUR SPRAY WINDOW**





You need a sprayer that's ready when you are to take advantage of the ideal window to get into the field. You want it to provide consistent, accurate application across every piece of ground, and to work smoothly and reliably all season, every season.

Regardless which model you choose, in today's Patriot series sprayers, you'll find a high-efficiency spraying package that fits your operation perfectly.



**MAKE YOURSELF COMFORTABLE**

Ergonomic Case IH cab and smooth ride allow longer hours with less fatigue. Plus, sitting a full sprayer length away from the engine, you'll enjoy an exceptionally quiet ride.

# DISTINCTIVE APPEARANCE

Unmatched performance

The cab-forward, rear-engine configuration gives Case IH Patriot sprayers their distinctive look and their performance edge. This design puts the static weight of the cab and engine over the front and rear axles. The dynamic weight of the product tank is in the center of the machine, so there is more even weight distribution when the tank is full and the booms are out.



**Patriot Sprayer Boom Widths**

Model	250 EXTREME	3230	3330	4430
18.3/27.4 M (60/90 FT.)	✓	✓	✓	✓
18.3/30.5 M (60/100 FT.)		✓	✓	✓
18.3/27.4/36.5 M (60/90/120 FT.)			✓	✓

**SUPERIOR SUSPENSION**

Aircraft-style trailing-link suspension provides a smooth ride. Even over challenging fields, this suspension system absorbs shock loads in ways no other suspension package can. Optional active suspension is perfect to make light work of hilly terrain.



#### **HEAVY-DUTY BOOM CONSTRUCTION**

Large, rectangular tube structure and a truss-style design with fewer but larger support members provide boom strength and durability. Independent right and left booms, plus full boom and boom tip breakaway features, respond to tough field stress loads.

#### **EVEN WEIGHT DISTRIBUTION**

Cab-forward, rear-engine design provides an extremely light footprint, yet maintains powerful performance. When time is of the essence, even weight distribution allows you to get into fields sooner and on to the next with less rutting and soil compaction.

#### **HEAVY-DUTY FRAMES**

Constructed of welded one-piece rectangular steel tubing, the frames of Patriot sprayers are engineered for durability and long service life. The rigid low-deflection frame not only protects the cab, product tank and power plant from field loads, it also provides a stable attachment point for the sprayer's booms.





# ADVANCED BOOM CHOICES

For any application

Case IH offers choices of boom widths and options to fit any application – each one built with the rugged and durable parallel-link design. The advanced boom and boom suspension provide superior strength without excessive weight, plus a wide range of spray heights for various crops and conditions. The parallel-link design delivers the versatility retailers and producers need with a 152-centimeter (60-inch) range of motion for spraying pre-plant, post-tassel or anytime in between. This design also maintains boom position at all speeds, including high-speed turns. Patriot booms offer greater durability and longer service life.

The AccuBoom Automatic Boom Section control system automatically turns off boom sections when they enter an area that has already been sprayed. When leaving the applied area, the sections are turned back on. AccuBoom is operated simply, through the AFS Pro 700 display in combination with the GPS system. It is standard on all Case IH Patriot models.

AutoBoom Automatic Boom Height control detects changes in terrain and adjusts the booms height accordingly. Entirely automatic the system decreases operator fatigue, along with machine wear and tear. AutoBoom also increases application accuracy and coverage. Plus, it can be configured with additional ultrasonic sensors or gauge wheels to maintain a level spray platform and maximize boom life.

AutoFold Plus allows to begin the unfolding process at the touch of a single switch, in about 30 seconds, the inner, mid- and outer-boom sections are completely unfolded and the center section height is lowered to its most recent setting. Hence, the system eliminates the guesswork about boom height when moving from field to field. AutoFold Plus is included as part of the Case IH 36.5 m (120-foot) spray boom package.

**PATRIOT SPRAYER. SIMPLY BETTER.**

## ADVANTAGES

- Durable and adaptable boom design
- AccuBoom ensures a consistent, regular spray performance
- AutoBoom increases spray accuracy and coverage
- AutoFold Plus makes changing field simple and easy



# AIM COMMAND FLEX

For ultimate spray quality

Get the most out of every tankful, every hour and every acre with AIM Command FLEX advanced spray technology. This superior spray system is a factory-equipped option on Case IH Patriot sprayers\*. AIM Command FLEX enhances sprayer productivity thanks to its advanced control over product flow and pressure. It is more precise than conventional rate controllers and it optimizes application rates and droplet sizes for consistent application, regardless of speed and ground conditions. AIM Command FLEX delivers more consistent, flexible and accurate application, even in turns, rough terrain and irregular-shaped fields. Our commitment is to integrate precision technology to help your operations achieve greater efficiency.

AIM Command FLEX relies on pulse width modulation (PWM) spray technology, which ensures a constant application rate and spray pressure, even when sprayer speed changes. You may think of it as a way to change nozzle tips without leaving the cab. Once you select a standard tip based on application rate, chemical droplet size and travel speed, AIM Command FLEX automatically and precisely controls the flow to meet targeted application rates. Working at 10 pulses per second, nozzle valves vary the duty cycle to maintain the correct application rate as sprayer speed changes.

**PATRIOT SPRAYER. SUPERIOR SPRAY TECHNOLOGY.**

## ADVANTAGES

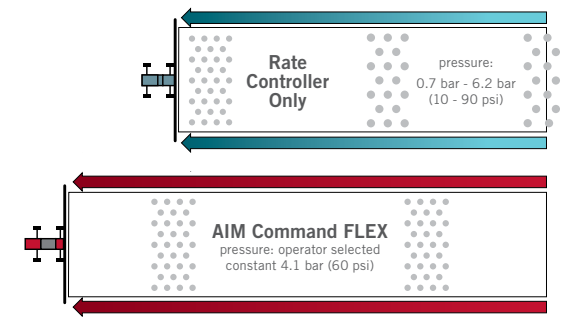
- Consistent application regardless the conditions
- More precise than conventional rate controller system
- Easy to adjust

\*AIM Command Flex is not available on Patriot 250 Extreme Series



**AIM** Command  
**FLEX**





# BETTER APPLICATION QUALITY ACROSS EVERY FIELD

To meet your productivity demands

AIM Command FLEX helps you achieve a level of spray coverage that's not possible with conventional rate controller-only technology by precisely controlling product flow and spray pressure. AIM Command FLEX operates 36 separate "virtual" boom sections, delivering the ultimate in spray accuracy and precision. The ability to control more boom sections helps reduce over-application that adds costs and potential crop damage. To accommodate sprayer wheel tracks, fence rows or other field conditions, AIM Command Flex lets you pre-set spray rates up to 30 percent higher than your target rate on up to eight nozzles.

AIM Command FLEX eliminates worry about over- or under-application as it delivers quality application for effective and efficient use of crop protection products and spray operations. The system maintains consistent application rate and spray pressure across the field and over a wide range of speeds - up to 8:1 with properly sized spray tips. Because pressure is constant, you can choose the speed

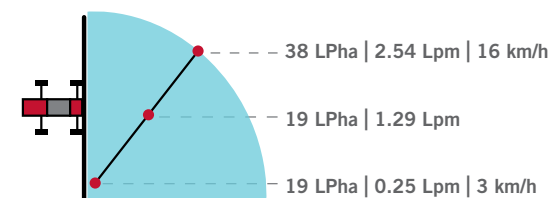
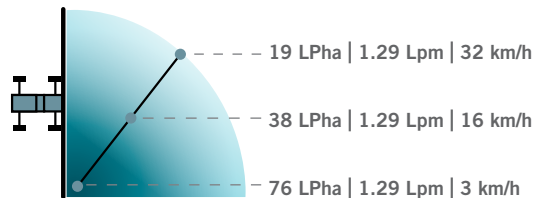
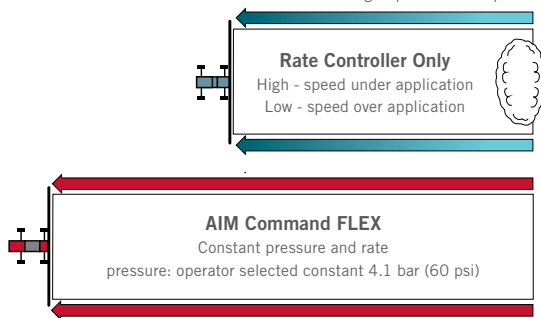
that fits the field or conditions and still get the best possible product coverage. AIM Command FLEX increases your sprayer's production potential while reducing per-acre operating costs.

When your sprayer runs in a straight line, every nozzle moves over the field at the same speed. But during turns, ground speed varies across the boom - causing under-application on the outside of the boom and over-application on the inside of the boom. AIM Command FLEX solves that problem by compensating for different speeds across the boom to ensure correct application rates. Each nozzle adjusts its duty cycle to match the targeted application rate based on speed, nozzle position on the boom and the arc or turn radius. There's no need to manually increase spray rates at lower speeds to deliver consistent, accurate application rates.

**PATRIOT SPRAYER. PRECISION AT ITS BEST.**

## ADVANTAGES

- Precise product flow
- Turn compensation
- Improved drift control
- Instant on/off



- 1 Consistent coverage everywhere
- 2 Out of the corner control
- 3 Conventional rate controller
- 3 AIM Command FLEX

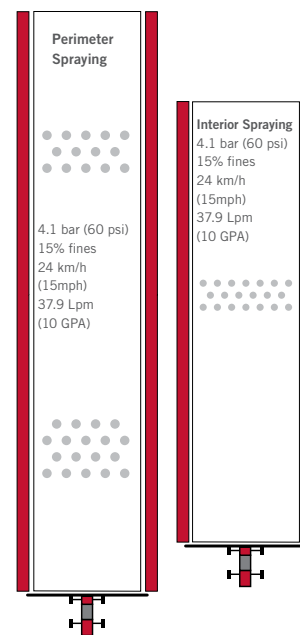
Unpredictable weather and changing winds can create headaches in sensitive areas. For on-demand drift control, AIM Command FLEX allows you to toggle between two pre-set spray pressures that can be reset up or down at any time. You can pre-set a target spray pressure to achieve the desired droplet size for the product you are applying. Input a lower pressure setting to selectively avoid off-target application in sensitive areas or to respond to wind gusts. When normal conditions return, toggle back to the higher pressure setting on the go. You also have the option of inputting a higher pressure setting for greater canopy penetration.

With AIM Command FLEX, you reach target rate and spray pressure immediately after nozzles are turned on. And, there is no pressure bleed-down or nozzle dribble at turn-off that can lead to over-application.

**PATRIOT SPRAYER. EFFICIENT, EFFECTIVE APPLICATION.**

**STEP 1**

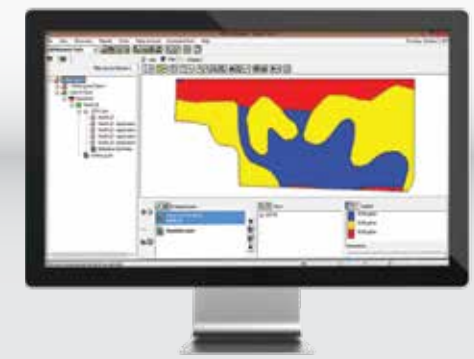
Dial to lower pressure selection for fewer fines.



**STEP 2**

Switch to higher rate to increase droplet count.





# ADVANCED DIAGNOSTICS AND PRECISION TOOLS

To achieve greater spray efficiency

High-efficiency spraying is all about giving every field the best chance of achieving the highest possible yield and with short time windows and high input costs, every acre needs accurate and efficient application. To make the most of your chemical application, every Case IH Patriot sprayer can be equipped with AIM Command Flex advanced spray technology, a high-efficiency spraying feature that makes every hour and every day count.

With a nozzle valve diagnostic system, AIM Command FLEX gives you peace of mind that you will be able to spot malfunctioning nozzles. The system monitors each nozzle and alerts you immediately if a valve quits working or a wire becomes unplugged. In addition to an alert on your in-cab display, LED indicator lights on each solenoid valve flash

colors to help you spot problem nozzles quickly and easily. AIM Command FLEX operates through the sprayer's rate controller – AFS Pro 700 display. Monitor and adjust application rate, spray pressure, boom section status, product tank volume and other operating parameters – all from one display. AIM Command FLEX is ISO Virtual Terminal (VT) – compatible for system flexibility.

With AIM Command FLEX, you can export application data in Shapefile format, generate as-applied maps and application reports for each field or farm. AIM Command FLEX recognizes internal and external boundaries, along with no-spray zones.

**PATRIOT SPRAYER. PRECISE AND RELIABLE.**

## ADVANTAGES

- Nozzle valve diagnostics
- Simple on-screen operation
- Accurate spray mapping



# PATRIOT SPRAYER CAB

Where comfort and performance meet

When application windows are narrow and every hour in the field counts, operator comfort isn't a luxury - it's a necessity. That's why Patriot sprayers are designed to let you work longer with less fatigue. Expansive front windshields offer a wide vista of tinted glass and put the operator in control.

The ergonomically designed, line-of-sight instrumentation positions your critical operating functions right up front. The pressurized cabs keep the inside air fresh, while the automatic temperature control (standard on the Patriot 4430, optional on the 250 Extreme, 3230 and 3330) and sunshades keep you cool and comfortable. The air-ride seat is adjustable for position, ride firmness and lumbar support.

Exclusive 40-degree right-hand swivel seat (only on the Patriot 4430, shown above) gives you a 180-degree full field of vision. Additionally, the Patriot 4430 instructional seat can be folded to provide a convenient workstation with cup holders.

All sprayer control switches are ergonomically placed and attached directly to the operator's seat. And the most commonly used ones are conveniently placed on the hydrostatic control lever for one-handed operation.

The optional AFS Pro 700 display puts total control at your fingertips. Its large, bright touchscreen display allows you to monitor and control guidance functions and application rate as well as track ground speed, acres covered and other variables. The AFS Pro 700 also integrates seamlessly with Case IH Advanced Farming Systems (AFS) software; order your sprayer AFS AccuGuide-ready, and then complete the installation with the AFS Pro 700, the AFS 372 GPS receiver and the Navigation II controller. The AFS Pro 700 display is transferable to other Case IH machines.

**PATRIOT SPRAYERS. COMFORT BOOSTS ACRES PER DAY.**



- A** Air-ride seat
- B** Instructional seat
- C** Tilt and telescoping steering column
- D** A-post gauges and readouts
- E** AFS Pro 700 display
- F** Hydrostatic control lever
- G** Right-hand control console
- H** Wheel track adjustment (under armrest cover)

**B**

**A**

**C**

**D**

**E**

**F**

**G**

**H**







# CASE IH PATRIOT SPRAYERS

What sets them apart

- 1 Optional LED lighting package
- 2 Aircraft-style suspensions are the promise of a smooth ride
- 3 Advanced nozzle options

All four Patriot models share key design features that set these sprayers apart, including cab-forward, rear-engine design, advanced boom construction, long field life, easy service and high resale value.

Case IH Patriot sprayers are popular with leading custom applicators, retailers and producers because they help operators consistently make timely and accurate applications. With a deep understanding of production agriculture, the Case IH design helps you get the most out of every tank, every acre, every day.

Finish the job after nightfall. Standard lighting includes halogen lighting in the front hood, cab and service center/booms (optional on the Patriot 3230), along with LED amber turn signals and red taillights. Optional deluxe lighting packages for the Patriot 3230, 3330 and 4430 models include high-intensity discharge (HID) lights and LED lights on the front hood and the cab roof. Cab post-mounted rotating beacons are also available. The design feature allows Patriot sprayers to handle a full range of field loads and travel speeds for a smooth, comfortable ride.

**PATRIOT SPRAYER. UNMATCHED PERFORMANCE.**

## ADVANTAGES

- Wide choice of lighting packages to fit your needs
- Reliable and efficient suspensions
- Smooth ride regardless the field conditions
- Consistent spraying performance

1



2



18



# CASE IH PATRIOT SPRAYER

The range

## 1 CASE IH PATRIOT 4430 SPRAYER

- Award-winning, industry- leading
- 4542 L Class IV sprayer
- Case IH FPT engine of 325 base hp (356 peak hp)
- Surveyor cab provides great comfort and view

## 2 CASE IH PATRIOT 3330 SPRAYER

- 3785 L Class III sprayer
- Case IH FPT engine of 250 hp
- 36,58 m boom available
- Improved hood design delivers easy access

## 3 CASE IH PATRIOT 3230 SPRAYER

- Mid-size sprayer, big-time productivity
- 3028 L Class III sprayer
- Case IH FPT engine of 220 hp
- Easy access to routine service and maintenance items





# NEW PATRIOT SPRAYER 250 EXTREME

Unmatched performance for your low/medium-sized business

Case IH has introduced its new Patriot 250 Extreme sprayer as the entry-level option in the four-model Patriot range, offering an easier step-up to self-propelled spraying for farmers who previously had to rely on tractor-pulled sprayers. The right and left booms of the new Patriot are independent, with a total span of 27 metres and the boom height can be varied from 60 to 220 cm fewer passes and a greater sprayed area. The booms are fed by a 2,500-litre solution tank and a 280-litre rinse tank, with a 36.5-litre chemical eductor.

The 1.7 metre-high chassis affords best-in-class ground clearance of 1.6 metres, making it possible to work in taller crops. For the flexibility needed when spraying different crops, the wheel track can be varied from 250 to 305 cm. It is powered by a strong and proven FPT 4.5-litre in-line four-cylinder engine with common rail injection and a turbo intercooler, this makes 177 horsepower. To put all of this power to good use, traction assist for the 4x4 hydraulic transmission is standard.

**PATRIOT 250 EXTREME. COMPACT AND STRONG.**

## SPECIFICATION

- Case IH FPT engine of 177 hp
- Transmission, 4-wheel drive with drive aid
- 2,500 L product tank capacity
- 27 m boom size (optional 24 m)
- 250-305 cm gauge size



# MORE TIME TO SPRAY

## EVERY DAY

- 1** Simple access to the tank
- 2** Easy-to-access eductor
- 3** Easy-open hoods
- 4** Full-length walkway, for easy service

Case IH Patriot sprayers are designed to get maintenance out of the way quickly and efficiently - and get you back in the field ASAP. A one-stop service center lets you perform all tendering functions from a single location. Connections are provided to make it easy to fill tanks from ground level. Large plumbing hoses, direct hose routings and minimal fittings and connections are standard, making tank-fill time shorter.

In-field service is a snap. An open architecture design allows easy access to components under the sprayer frame. And ladders, walkways and platforms make it easy to access service points higher up.

The easy-access stainless-steel eductor is designed for simple, efficient operation. The chemical eductor lowers to waist level, then stores conveniently out of the way.

Lightweight, easy-open hoods on the Patriot sprayer models give you unrestricted access to service items. This access point allows for quick checks or service and gets you back in the field sooner - enhancing the machine's productivity. To keep things moving, fuel tanks are sized to allow for a full day of spraying.

All Patriot sprayers have a full-length walkway that provides easy access to all routine maintenance and inspection points on one side of the sprayer - including the fuel and DEF tanks, cab, product tank and engine compartment.

**PATRIOT SPRAYER. SIMPLE, EASY OPERATIONS.**

### ADVANTAGES

- Easy-to-access service points
- Quick and simple daily maintenance
- Reliable structure
- Rugged construction



Product Tank Gravity

1	2	3	4	5	6	7	8	9	10	11	12	13	14	15	16	17	18	19	20	21	22	23	24	25	26	27	28	29	30	31	32	33	34	35	36	37	38	39	40	41	42	43	44	45	46	47	48	49	50	51	52	53	54	55	56	57	58	59	60	61	62	63	64	65	66	67	68	69	70	71	72	73	74	75	76	77	78	79	80	81	82	83	84	85	86	87	88	89	90	91	92	93	94	95	96	97	98	99	100
---	---	---	---	---	---	---	---	---	----	----	----	----	----	----	----	----	----	----	----	----	----	----	----	----	----	----	----	----	----	----	----	----	----	----	----	----	----	----	----	----	----	----	----	----	----	----	----	----	----	----	----	----	----	----	----	----	----	----	----	----	----	----	----	----	----	----	----	----	----	----	----	----	----	----	----	----	----	----	----	----	----	----	----	----	----	----	----	----	----	----	----	----	----	----	----	----	----	----	-----

S1 - Lights, must be on (I) for the rest of the panel switches to work  
S2 - M is pump manual mode, allows use of foreline switch to control pump speed  
Spray - SWITCH LOCATED IN CAB - Operates electric spray valve, hold switch for 7 seconds for full open or close of spray valve  
Spray & Sparge: Switches and valves in gray position

**EMERGENCY STOP**

STOP

TANK RINSE

1 CHEM RINSE

Product Tank Fill

3

1

TRANSFER PUMP

2

TANK RINSE

**WARNING**

DO NOT OPERATE

IN THE PRESENCE OF

FLAMMABLE OR

EXPLOSIVE VAPORS

OR GASES

OR

HAZARDOUS

SUBSTANCES

CHEMICAL INDUCTION

6







REDUCE THE CONSUMPTION OF RESOURCES BY MOVING FROM FOSSIL FUELS TO A **RENEWABLE ENERGY SYSTEM**



INCREASE AGRICULTURAL PRODUCTIVITY TO **IMPROVE FOOD AVAILABILITY**



REDUCE **ENVIRONMENTAL IMPACT** AND OPTIMIZE **ENERGY CONSUMPTION** IN ALL COMPANY PROCESSES



INCREASE OPPORTUNITIES FOR EXCHANGING **IDEAS** AND **GOOD PRACTICES** WITH ALL **STAKEHOLDERS**

# SUSTAINABILITY

It's part of everything we do

Case IH is part of CNH Industrial, one of the world's largest capital goods companies. It has a firm focus on its environmental responsibilities, and has been a seven-time leader in the Dow Jones Sustainability Index. Within the CNH Industrial group:

- 91% of waste is recovered
- 27.5% of water used is recycled and
- 56% of electricity used is from renewable sources.

Being a global leader in capital goods carries great responsibilities, which means that we must be accountable for every global activity we perform. Our responsibility does not stop at the factory gate, and we have made great efforts to be proactive when it comes to the broader global issues surrounding sustainability. Over the years, our work in research and development has been geared towards ensuring that our products continue to achieve increasingly high standards in terms of safety and eco-compati-

bility. Rather than limiting customers to a choice between low operating costs and eco-efficiency, our strategy is to offer products that deliver both.

By providing innovative products and solutions that abide by environmentally responsible operating practices, Case IH is doing its part to address global issues such as climate change. Today's companies face complex and interconnected challenges that demand an ever-evolving approach to sustainability, a scenario that Case IH believes is an important driver in creating long-term value for all its stakeholders, which is a core objective of the brand.

At Case IH, our engineers are focused on producing machines that not only work on the land, but work with it too.

**CASE IH. ALWAYS FUTURE-FOCUSED.**

## THE SUSTAINABILITY GROWTH DRIVERS ARE:

- Necessity to feed an increasing population
- Importance of soil protection for future generations
- Growing sustainable farming solutions
- Increasing public awareness
- Fostering people engagement



# SERVICETEAM

We'll keep you farming.

The Case IH **SERVICETEAM**, a strong dealer network backed up by local Case IH market teams, industry leading Case IH supporting tools, modern training methods, best in class spare parts support and logistics performance providing Case IH customers with an excellent all-encompassing after-sales service, keeping customers farming!

TECHNICAL SUPPORT | SERVICE | PARTS | SERVICEFINANCE

## GENUINEPARTS HIGH PERFORMANCE

### WE KEEP YOUR EQUIPMENT RUNNING.

Your local Case IH dealer and our dedicated parts call centre technicians and their logistic colleagues are all part of the Case IH ServiceTeam network. They're highly trained to give you expert advice and solve problems, ensuring the correct, genuine Case IH parts are located and dispatched right away, reaching you next day or sooner to keep your machine in top condition.



### AN OPTIMAL FINANCING SOLUTION FOR EVERY INVESTMENT.

CNH Industrial Capital is the financing company for Case IH. Our employees are financial experts and have many years of experience in agriculture. We do not only know about Case IH products and the market, we also understand the individual requirements of your operations. Therefore we are always able to offer you a financial solution for your new investments that is tailored specifically to your operational requirements. Our most important goal is improving the profitability of your investments!


	PATRIOT 250 EXTREME	PATRIOT 3230	PATRIOT 3330	PATRIOT 4430
<b>SPECIFICATIONS</b>				
Engine	6.7L (409 cu. in.) Case IH NEF inline 6-cylinder, 177 rated hp (132 kW), 216 peak hp (162kW), 752 ft.-lbs. (1,020 Nm) peak torque, turbocharged, after-cooled, electronically controlled diesel. Tier 3 emission.	6.7L (409 cu. in.) Case IH NEF inline 6-cylinder, 220 rated hp (164 kW), 240 peak hp (179 kW), 752 ft.-lbs. (1,020 Nm) peak torque, turbocharged, after-cooled, electronically controlled diesel. Tier 3 emission.	6.7L (409 cu. in.) Case IH NEF inline 6-cylinder, 250 rated hp (186 kW), 270 peak hp (202 kW), 789 ft.-lbs. (1,175 Nm) peak torque, turbocharged, after-cooled, electronically controlled diesel. Tier 3 emission.	8.7L (531 cu. in.) Case IH NEF inline 6-cylinder, 325 rated hp (243 kW), 356 peak hp (266 kW), 1,084 ft.-lbs. (1,470 Nm) peak torque, turbocharged, after-cooled, electronically controlled diesel, Tier 2 emission.
Drive	Transmission, 4-wheel drive with drive aid. Hydrostatic with full-time 4-wheel drive. Infinitely variable speed control returns wheel motor swash plates to maximum angle each time the hydro lever is returned to neutral. Allows maximum torque for each start.			
Wheel Track Adjustment	250 – 305 cm (98 - 120 in.) hydraulically adjusted from the cab with manual stops at 2,54 cm (1 in.) increments per wheel.	305-399 cm (120-157 in.) hydraulically adjusted from the cab with manual stops at 2,54 cm (1 in.) increments per wheel.		
Travel Speed	30 km/h (18.6 mph)	48 km/h (30 mph)		
Dry Weight	9,526 kg (21,001 lbs) (27.4 m boom)	10,560 kg (23,480 lbs) (18.3/27.4 m boom)	11,367 kg (25,060 lbs) (18.3 / 27.4 m boom) 12,047 kg (26,560 lbs) (36.5 m boom)	12,428 kg (27,400 lbs) (18.3 / 27.4 m boom) 13,109 kg (28,900 lbs) (36,5 m boom)
Solution Tank Size	2,500 L (600 gal.) poly construction	3,028 L (800 gal.) stainless steel or poly construction	3,758 L (1,000 gal.) stainless steel	4,542 L (1,200 gal.) stainless steel
Nozzle Spacing	50.8 cm (20 in.) off-center	50.8 cm (20 in.) off-center or 50.8-76.2 (20-30 in.) with 76.2 cm (30 in.) on-center		
Overall Length	7.2 m (23 ft. 7 in.)	8.8 m (28 ft. 10 in.)		9.1 m (29 ft. 10 in.)
Overall Height	3.7 m (12 ft.)			
Overall Width	Wheels retracted 3,05 m (10 ft.) Wheels extended 3,99 m (13 ft. 1 in.)	Wheels retracted 3,5 m (11 ft. 6 in.); Wheels extended 4.5 m (14 ft. 7 in.)		
Wheelbase	3.56 m (12 ft.)	3.8 m (12 ft. 6 in.)		4.1 m (13 ft. 4 in.)
Tire Size	Available with 320 / 90R42	Available with 320/90R46, 380/85R46, 380/90R46, 480/80R42, 520/85R38 and 650/65R38	Available with 320/90R46, 380/90R46, 480/80R42, 520/85R38 and 650/65R38	Available with 320/90R46, 380/90R46, 480/80R42, 650/65R38 and 620/70R38
Ground Clearance	1.70 m (67 in.)	132 cm (52 in.)		135 cm (53 in.)
Turning Radius	6.9 m (22 ft. 8 in.) from center line of rear axle	7.1 m (23 ft. 3 in.) from center line of rear axle		7.5 m (24 ft. 9 in.) from center line of rear axle
Boom Length	27 / 24 m (90 / 80 ft.), self-centering	18.3 / 30.5 m (60 / 100 ft.), self-centering	18.3 / 27.4 (60 / 90 ft.), 18.3 / 30.5 (60 / 100 ft.) or 18.3 / 27.4 / 36.5 m (60 / 90 / 120 ft.), self-centering	
Boom Adjustment Height	60 – 220 cm (23 - 86 in.)	61 - 213 cm (24 - 84 in.)		
Full Boom Breakaway	30 degrees			
Wingtip Breakaway	27.4 m (90ft.) - 1.5 m (4 ft. 11 in.) /	27.4 m (90ft.) - 1.7 m (5 ft. 6 in.) / 30.5 m (100 ft.) - 3.2 m (10 ft. 6 in.)	27.4 m (90 ft.) - 1.7 m (5 ft. 6 in.) / 30.5 m (100 ft.) - 3.2 m (10 ft. 6 in.) / 36.5 m (120 ft.) - 2.7 m (9 ft.)	27.4 m (90 ft.) - 1.7 m (5 ft. 6 in.) / 30.5 m (100 ft.) - 3.2 m (10 ft. 6 in.) / 36.5 m (120 ft.) - 2.7 m (9 ft.)
Suspension	Active hydraulic	4-wheel independent trailing-link with spring and shock standard; active suspension optional.		
Steering	Hydraulic power steering with master / slave re-phasing cylinders.			
Fuel Tank/DEF Tank	319 L (84 gal.) / -	454 L ( 120 gal.) / 79.5 L (21 gal.)		530 L (140 gal.) / 79 L (21 gal.)
Sprayer Control	Case IH AFS Pro 700			
Product Pump	Hydraulic drive, centrifugal, stainless steel, 473 l/min	Centrifugal-hydraulic motor drive by product control system		
Foam Marker	-	208 L (55 gal.) high-volume foam marker system. Air supply take from turbocharger.	208 L (55 gal.) high-volume foam marker system. Air supply take from turbocharger standard; engine-driven air compressor optional.	
Rinse Tank	350 L (92 gal.)	424 L (112 gal.)		424 L (112 gal.)

CASE IH Patriot sprayer series brochure –  
09/2018 – Cod. 18MEAC1001COMINB  
Printed in TURKEY

[WWW.CASEIH.COM](http://WWW.CASEIH.COM)

**CNH Industrial Österreich GmbH**  
**Steyrer Straße 32, A-4300 St. Valentin – Austria**

Free phone: 00 800 22 73 44 00

 Safety never hurts! Always read the Operator's Manual before working with any equipment. Inspect equipment before using it, and be sure it is operating properly. Follow the product safety signs, and use any safety features provided. This literature has been published for worldwide circulation. The standard and optional equipment and the availability of individual models may vary from one country to the next. Case IH reserves the right to undertake modifications without prior notice to the design and technical equipment at all times without this resulting in any obligation whatsoever to make such modifications to units already sold. Whilst every effort is made to ensure that the specifications, descriptions and illustrations in this brochure are correct at the time of going to press, these are also subject to change without prior notice. Illustrations may show optional equipment or may not show all standard equipment. Case IH recommends **AKCELA** lubricants.



**CASE IH**  
AGRICULTURE  
FOR THOSE WHO DEMAND MORE