

**D-SERIES CRAWLER EXCAVATORS**  
**CX350D / CX370D / CX370D 2 PIECE BOOM**  
**STAGE V**

**CASE**  
CONSTRUCTION



**IT'S TIME**  
**FOR MORE**

[www.casece.com](http://www.casece.com)  
**EXPERTS FOR THE REAL WORLD**  
**SINCE 1842**

# CX D-SERIES

## CX350D - CX370D

### ENGINE

Model \_\_\_\_\_ ISUZU VE-6HK1X  
 Type \_\_\_\_\_ Water-cooled, 4-cycle diesel, 6-cylinder in line,  
 High pressure common rail system (electric control), Turbocharger  
 with air cooled intercooler, SCR system & DPD system.  
 Emission level \_\_\_\_\_ REG. EU 2016/1628 STAGE V  
 Number of cylinders / Displacement (l) \_\_\_\_\_ 6 / 7,79  
 Bore & stroke (mm) \_\_\_\_\_ 115 x 125  
 Rated flywheel horse power  
 SAE J1349, ISO 9249 \_\_\_\_\_ 200 kW / 268 hp at 1900 min<sup>-1</sup>  
 ISO 14396 \_\_\_\_\_ 210 kW / 282 hp at 1900 min<sup>-1</sup>  
 Maximum torque  
 SAE J 1349, ISO 9249 \_\_\_\_\_ 988 N-m at 1500 min<sup>-1</sup>  
 ISO 14396 \_\_\_\_\_ 1020 N-m at 1500 min<sup>-1</sup>

### HYDRAULIC SYSTEM

Main pumps \_\_\_\_\_ 2 variable displacement axial piston pumps with  
 regulating system  
 Max. oil flow \_\_\_\_\_ 2 x 300 liter/min at 1900 min<sup>-1</sup>  
**Working circuit pressure**  
 Boom/Arm/Bucket (MPa) \_\_\_\_\_ 34.3 - 37.3 with auto power boost  
 Swing circuit (MPa) \_\_\_\_\_ 30.4  
 Travel circuit (MPa) \_\_\_\_\_ 34.3  
 Pilot pump (l/min) \_\_\_\_\_ 28.5  
 Working circuit pressure (MPa) \_\_\_\_\_ 3.9  
**Boom Cylinders**  
 Bore (mm) \_\_\_\_\_ 145  
 Stroke (mm) \_\_\_\_\_ 1495  
**Boom Positioning (2 piece boom only)**  
 Bore (mm) \_\_\_\_\_ 170  
 Stroke (mm) \_\_\_\_\_ 1335  
**Arm Cylinder**  
 Bore (mm) \_\_\_\_\_ 170  
 Stroke (mm) \_\_\_\_\_ 1748  
**Bucket Cylinder**  
 Bore (mm) \_\_\_\_\_ 150  
 Stroke (mm) \_\_\_\_\_ 1210

### PERFORMANCE DATA CX350D/CX370D

		Arm 3.25 m	Arm 2.20 m	Arm 2.63 m	Arm 4.05 m*
Boom length	mm	6450	6450	6450	6450
Bucket radius	mm	1680	1680	1680	1680
Bucket wrist action		173°	173°	173°	173°
A Maximum reach at GRP	mm	10980	9970	10450	11710
B Maximum reach	mm	11170	10180	10650	11900
C Max. digging depth	mm	7340	6300	6720	8140
D Max. digging height	mm	10380	9830	10280	10650
E Max. dumping height	mm	7240	6730	7110	7530
F Min. swing radius	mm	4510	4410	4440	4530

### DIGGING FORCE (ISO 6015)

		Arm 3.25 m	Arm 2.20 m	Arm 2.63 m	Arm 4.05 m*
Arm digging force	kN	164.5	225.3	194.7	140.0
with Auto power boost	kN	178.8	245.0	211.7	152.2
Bucket digging force	kN	229.7	229.7	229.7	229.7
with Auto power boost	kN	249.8	249.8	249.8	249.8

\*CX350D only

### SWING

Swing Motor \_\_\_\_\_ Fixed displacement axial piston motor  
 Maximum swing speed (min<sup>-1</sup>) \_\_\_\_\_ 7.1  
 Swing torque (Nm) \_\_\_\_\_ 112,000

### FILTERS

Suction filter (µm) \_\_\_\_\_ 105  
 Return filter (µm) \_\_\_\_\_ 6  
 Pilot line filter (µm) \_\_\_\_\_ 8

### ELECTRICAL SYSTEM

Voltage (V) \_\_\_\_\_ 24  
 Alternator (Amp) \_\_\_\_\_ 90  
 Starter (V/kW) \_\_\_\_\_ 24/5.0  
 Battery \_\_\_\_\_ 2X12V - 128 Ah/5 HR

### UNDERCARRIAGE

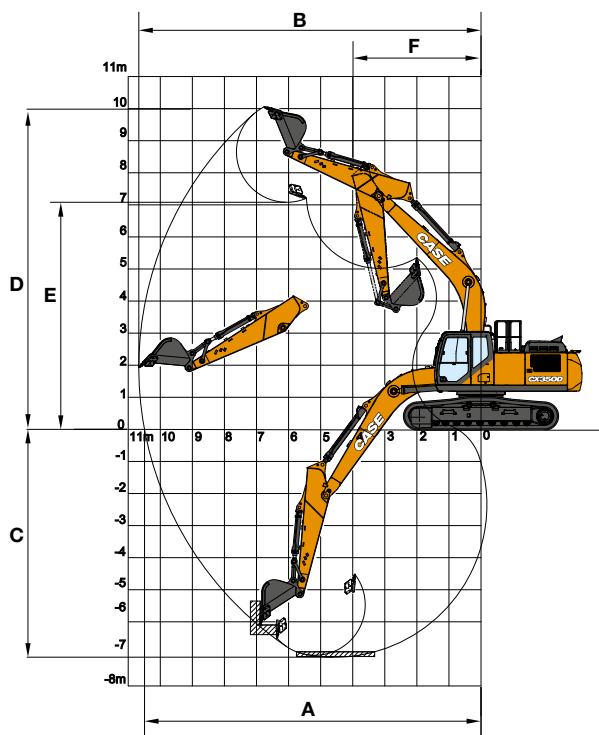
Travel motor \_\_\_\_\_ Variable displacement axial piston motor  
 High travel speed (Automatic travel speed shifting) (km/h) \_\_\_\_\_ 5.5  
 Low travel speed (km/h) \_\_\_\_\_ 3.3  
 Drawbar pull (kN) \_\_\_\_\_ 273  
 Number of carrier rollers (each side) \_\_\_\_\_ 2  
 Number of track rollers (each side) \_\_\_\_\_ 8  
 Number of shoes (each side) \_\_\_\_\_ 48  
 Type of shoes \_\_\_\_\_ Triple grouser shoes  
 Grade ability \_\_\_\_\_ 70 % (35°)

### SOUND LEVEL

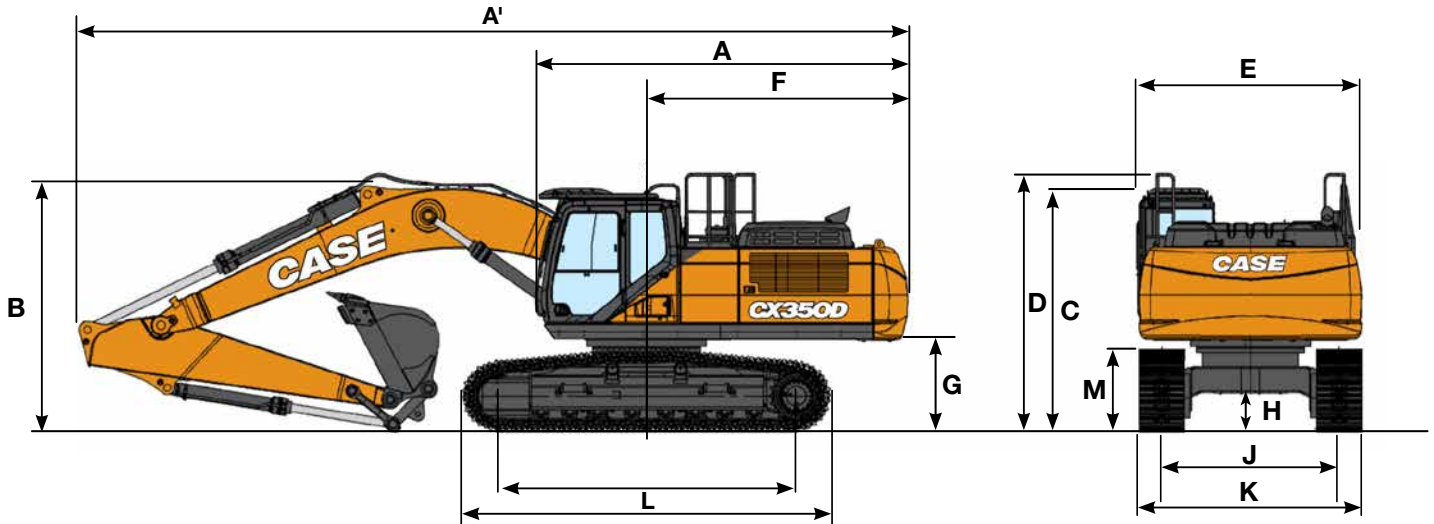
External guaranteed sound level  
 (EU Directive 2000/14/EC) \_\_\_\_\_ LwA 105 dB(A)  
 Operator cab sound pressure level (ISO 6396) \_\_\_\_\_ LpA 71 dB(A)

### CIRCUIT AND COMPONENT CAPACITIES

Fuel tank (l) \_\_\_\_\_ 580  
 Hydraulic system (l) \_\_\_\_\_ 350  
 Hydraulic tank (l) \_\_\_\_\_ 175  
 Adblue tank (l) \_\_\_\_\_ 152



## GENERAL DIMENSIONS MONO LC-NLC



LC/NLC		Arm 3.25 m	Arm 2.20 m	Arm 2.63 m	Arm 4.05 m*	
A	Overall length (without attachment)	mm	6010	6010	6010	6010
A'	Overall length (with attachment)	mm	11170	11250	11220	11190
B	Overall height (to top of boom)	mm	3470	3620	3630	3620
C	Cab height	mm	3260	3260	3260	3260
D	Overall height (to top of hand rail)	mm	3470	3470	3470	3470
E	Upper structure overall width	mm	3030	3030	3030	3030
F	Swing (rear end radius)	mm	3550	3550	3550	3550
G	Clearance height under upper structure	mm	1210	1210	1210	1210
H	Minimum ground clearance	mm	470	470	470	470
I	Wheel base (Center to center of wheels)	mm	4040	4040	4040	4040
L	Crawler overall length	mm	4980	4980	4980	4980
M	Crawler tracks height	mm	1090	1090	1090	1090
<b>LC</b>						
J	Track gauge	mm	2600	2600	2600	2600
K	Undercarriage overall width (with 600 mm shoes)	mm	3200	3200	3200	3200
<b>NLC</b>						
J	Track gauge	mm	2390	2390	2390	2390
K	Undercarriage overall width (with 600 mm shoes)	mm	2990	2990	2990	2990

\*CX350D only

## WEIGHT AND GROUND PRESSURE CX350D

With 3.25 m Arm, 1.54 m<sup>3</sup> Heavy Duty bucket, 600 mm grouser shoes, operator, fluids, full fuel tank, and FOPS level 2 guard.

CX350D LC	Weight	Ground pressure
	36150 kg	0.067 MPa
CX350D NLC	Weight	Ground pressure
	36050 kg	0.067 MPa

Counterweight 6.400 kg

## WEIGHT AND GROUND PRESSURE CX370D

With 3.25 m Heavy Duty Arm, 1.75 m<sup>3</sup> Heavy Duty bucket, 600 mm grouser shoes, operator, fluids, full fuel tank, and FOPS level 2 guard.

CX370D LC	Weight	Ground pressure
	38200 kg	0.071 MPa
CX370D NLC	Weight	Ground pressure
	38100 kg	0.071 MPa

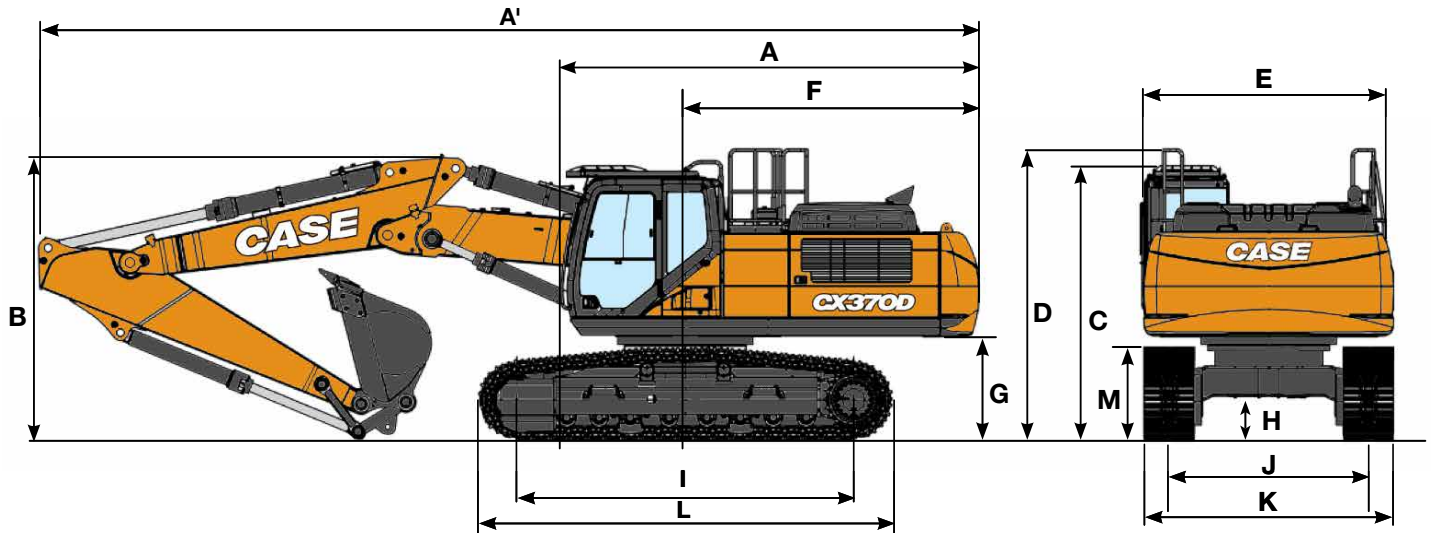
Counterweight 7.400 kg



# CX D-SERIES

## CX370D 2 PIECE BOOM

### GENERAL DIMENSIONS



LC/NLC		Arm 3.25 m	Arm 2.63 m	
A	Overall length (without attachment)	mm	6010	6010
A'	Overall length (with attachment)	mm	11270	11290
B	Overall height (to top of boom)	mm	3400	3400
C	Cab height	mm	3260	3260
D	Overall height (to top of hand rail)	mm	3360	3360
E	Upper structure overall width	mm	3030	3030
F	Swing (rear end radius)	mm	3550	3550
G	Clearance height under upper structure	mm	1210	1210
H	Minimum ground clearance	mm	470	470
I	Wheel base (Center to center of wheels)	mm	4040	4040
L	Crawler overall length	mm	4980	4980
M	Crawler tracks height	mm	1090	1090
J	Track gauge	mm	2600	2600
K	Undercarriage overall width (with 600 mm shoes)	mm	3200 / 2990	3200 / 2990

### WEIGHT AND GROUND PRESSURE CX370D 2 PIECE BOOM

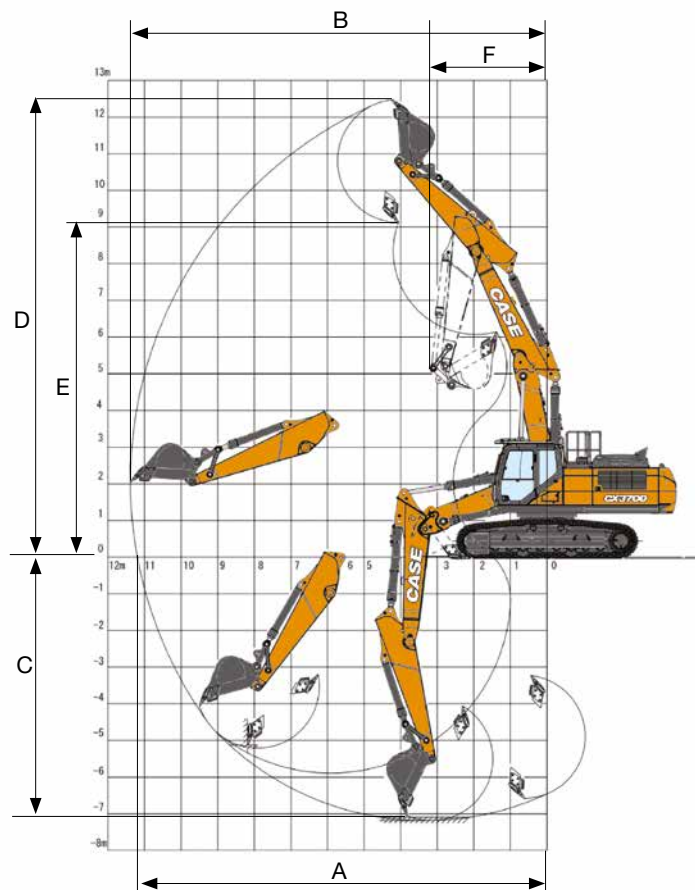
With 3.25 m Arm, 1.54 m<sup>3</sup> Heavy Duty bucket, 600 mm grouser shoes, operator, fluids, full fuel tank, and FOPS level 2 guard.

CX370D LC	Weight	Ground pressure
	38450 kg	0.072 MPa

CX370D NLC	Weight	Ground pressure
	38350 kg	0.072 MPa

Counterweight 7.400 kg

## PERFORMANCE DATA



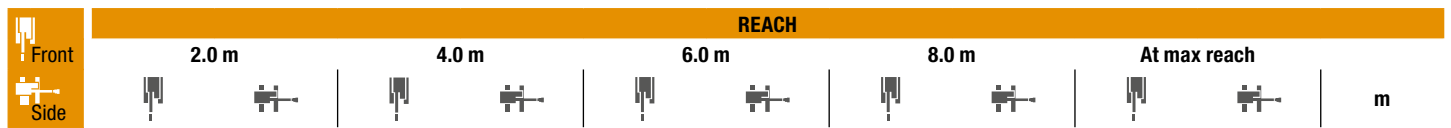
LC/NLC		Arm 3.25 m	Arm 2.63 m
1 <sup>st</sup> boom length	mm	3460	3460
2 <sup>nd</sup> boom length	mm	3100	3100
Bucket radius	mm	1680	1680
Bucket wrist action	°	173	173
A Maximum reach at GRP	mm	11200	10640
B Maximum reach	mm	11390	10840
C Max. digging depth	mm	7190	6600
D Max. digging height	mm	12470	12110
E Max. dumping height	mm	9130	8750
F Min. swing radius	mm	3520	3520

## DIGGING FORCE (ISO 6015)

		Arm 3.25 m	Arm 2.63 m
Arm digging force	kN	164.5	194.7
with Auto power boost	kN	178.8	245.0
Bucket digging force	kN	229.7	229.7
with Auto power boost	kN	249.8	249.8

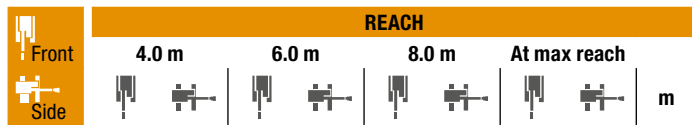
# LIFTING CAPACITY

## CX350D MONO



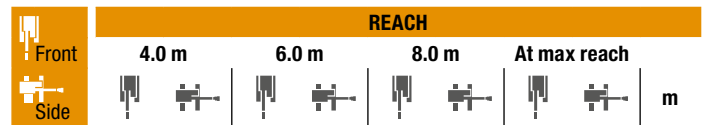
**LC UNDERCARRIAGE - Standard arm 3.25 m, 600 mm shoes, max reach 9.49 m**

Height	2.0 m	4.0 m	6.0 m	8.0 m	At max reach	Reach (m)
8.0 m						7.37
6.0 m				8680*	6690	8.62
4.0 m		16200*	16200*	11230*	9950	9.29
2.0 m		14670*	14670*	13260*	9200	9.49
0 m		15610*	15610*	13850	8710	9.26
-2.0 m	12600*	12600*	20870*	15670	13670	8.56
-4.0 m	23180*	23180*	17350*	16020	12140*	7.27



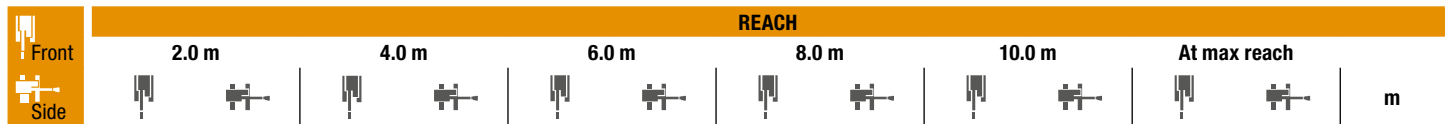
**LC UNDERCARRIAGE**  
Short arm 2.63 m, 600 mm shoes, max reach 8.97 m

Height	4.0 m	6.0 m	8.0 m	At max reach	Reach (m)
8.0 m				9730*	8.68
6.0 m	10230*	10230*	9390*	6480	8.05
4.0 m	11930*	6890	9480	6300	8.76
2.0 m	13710*	8970	9170	6020	8.97
0 m	13700	8580	8950	5820	8.73
-2.0 m	19540*	15690	13640	8520	7.98
-4.0 m	15300*	15300*	10760*	8830	6.57



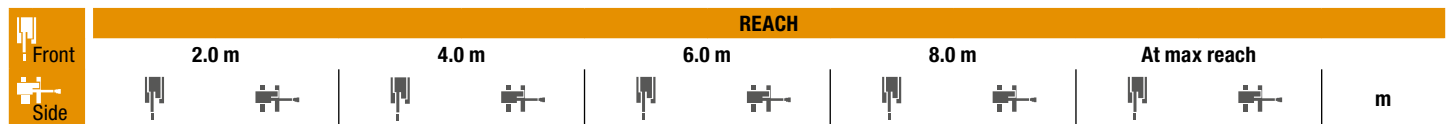
**LC UNDERCARRIAGE**  
S-Short arm 2.20 m, 600 mm shoes, max reach 8.50 m

Height	4.0 m	6.0 m	8.0 m	At max reach	Reach (m)
8.0 m		10650*	10480*		6.04
6.0 m		10870*	10290		7.52
4.0 m		12490*	9620	9480	8.28
2.0 m		14110*	8970	9210	8.5
0 m		13770	8650	9050	8.25
-2.0 m	18570*	15950	13530*	8660	7.45
-4.0 m	13880*	13880*			5.91



**LC UNDERCARRIAGE - Long arm 4.05 m, 600 mm shoes, max reach 10.20 m**

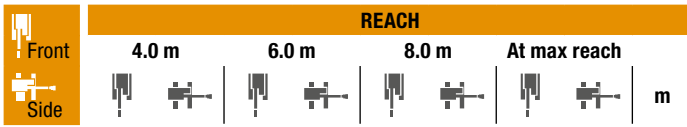
Height	2.0 m	4.0 m	6.0 m	8.0 m	10.0 m	At max reach	Reach (m)
8.0 m				6160*	6160*		8.28
6.0 m				7660*	6760		9.42
4.0 m				9960*	9960*	8430*	10.03
2.0 m		19200*	16750	12200*	9240	9240	10.22
0 m		17890*	15490	13750	8590	8880	10
-2.0 m	11300*	11300*	21500*	15220	13420	8300	9.36
-4.0 m	18830*	18830*	18900*	15430	12980*	8340	8.19
-6.0 m		13350*	13350*	8660*	8660*		6.19



**NLC UNDERCARRIAGE - Standard arm 3.25 m, 600 mm shoes, max reach 9.49 m**

Height	2.0 m	4.0 m	6.0 m	8.0 m	At max reach	Reach (m)
8.0 m						7.37
6.0 m				8680*	6190	8.62
4.0 m		16200*	16200*	11230*	9170	9.29
2.0 m		14670*	14670*	13260*	8430	9.49
0 m		15610*	14090	13820	7950	9.26
-2.0 m	12600*	12600*	20870*	14090	13640	8.56
-4.0 m	23180*	23180*	17350*	14430	12140*	7.27

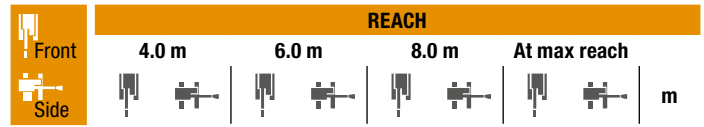
\* The above loads (kg) are compliant to the ISO standards and refer to the excavator equipped without bucket. The indicated loads are no more than 87% of hydraulic system lift capacity or 75% of static tipping load. Values marked with an asterisk (\*) are limited by the hydraulic lifting capacity.



### NLC UNDERCARRIAGE

Short arm 2.63 m, 600 mm shoes, max reach 8.97 m

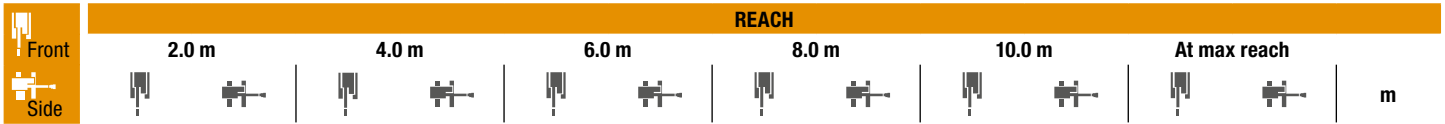
8.0 m						9730*	8160	6.68
6.0 m		10230*	9580	9390*	5990	8990*	5920	8.05
4.0 m		11930*	8900	9460	5810	8170	5020	8.76
2.0 m		13710*	8210	9150	5530	7710	4680	8.97
0 m		13680	7820	8940	5340	7910	4770	8.73
-2.0 m	19540*	14120	13610	7770		900	5380	7.98
-4.0 m	15300*	14570	10760*	8070		9220*	7220	6.57



### NLC UNDERCARRIAGE

S-Short arm 2.20 m, 600 mm shoes, max reach 8.50 m

8.0 m			10650*	9690			10650*	9590	6.04
6.0 m			10870*	9500			10070*	6610	7.52
4.0 m			12490*	8850	9460	5810	8960	5510	8.28
2.0 m			14110*	8210	9190	5570	8400	5120	8.5
0 m			13740	7900	9030	5430	8660	5230	8.25
-2.0 m	18570*	14360	13530*	7910			10040	6010	7.45
-4.0 m	13880*	13880*					9700	8500	5.91



NLC UNDERCARRIAGE - Long arm 4.05 m, 600 mm shoes, max reach 10.20 m

8.0 m							6160*	6160*			4960*	4960*	8.28	
6.0 m							7660*	6250			4710*	4650	9.42	
4.0 m						9960*	9320	8430*	5950	4950*	4070	4750*	4050	10.03
2.0 m			19200*	15120	12200*	8470	9220	5570	6520	3930	5020*	3790	10.22	
0 m			17890*	13910	13720	7830	8860	5250	5620*	3800	5590*	3800	10	
-2.0 m	11300*	11300*	21500*	13650	13390	7550	8680	5090			6700*	4130	9.36	
-4.0 m	18830*	18830*	18990*	13860	12980*	7580	8780	5170			8510	5030	8.19	
-6.0 m			13350*	13350*	8660*	8040					8150*	7720	6.19	

## CX350D LC

### HEAVY DUTY BUCKETS (DIRECT FIT)

CAPACITY m <sup>3</sup> (ISO7451 HEAPED)	WIDTH mm	WEIGHT kg	ARM 2.21 m	ARM 2.63 m	ARM 3.25 m	ARM 4.04 m
0.91	900	1220	○	○	○	○
1.19	1100	1340	○	○	○	○
1.33	1200	1440	○	○	○	●
1.54	1350	1540	○	○	●	▲
1.75	1500	1670	●	●	▲	■
2.03	1700	1830	●	▲	■	×

### HEAVY DUTY BUCKETS (QUICK COUPLED)

CAPACITY m <sup>3</sup> (ISO7451 HEAPED)	WIDTH mm	WEIGHT kg	ARM 2.21 m	ARM 2.63 m	ARM 3.25 m	ARM 4.04 m
0.91	900	1220	○	○	○	○
1.19	1100	1340	○	○	○	●
1.33	1200	1440	○	○	●	▲
1.54	1350	1540	●	●	▲	■
1.75	1500	1670	●	▲	■	×
2.03	1700	1830	■	■	×	×

### ROCK BUCKETS (DIRECT FIT)

CAPACITY m <sup>3</sup> (ISO7451 HEAPED)	WIDTH mm	WEIGHT kg	ARM 2.21 m	ARM 2.63 m	ARM 3.25 m	ARM 4.04 m
0.92	900	1310	○	○	○	○
1.19	1100	1440	○	○	○	○
1.34	1200	1550	○	○	○	●
1.56	1350	1650	○	○	●	▲
1.78	1500	1800	●	●	▲	■
2.03	1700	1970	▲	▲	■	×

### ROCK BUCKETS (QUICK COUPLED)

CAPACITY m <sup>3</sup> (ISO7451 HEAPED)	WIDTH mm	WEIGHT kg	ARM 2.21 m	ARM 2.63 m	ARM 3.25 m	ARM 4.04 m
0.92	900	1310	○	○	○	○
1.19	1100	1440	○	○	○	●
1.34	1200	1550	○	○	●	▲
1.56	1350	1650	●	●	▲	■
1.78	1500	1800	▲	▲	■	×
2.03	1700	1970	■	■	×	×

## CX350D NLC

### HEAVY DUTY BUCKETS (DIRECT FIT)

CAPACITY m <sup>3</sup> (ISO7451 HEAPED)	WIDTH mm	WEIGHT kg	ARM 2.21 m	ARM 2.63 m	ARM 3.25 m	ARM 4.04 m
0.91	900	1220	○	○	○	○
1.19	1100	1340	○	○	○	●
1.33	1200	1440	○	○	○	●
1.54	1350	1540	○	●	●	■
1.75	1500	1670	●	▲	■	×
2.03	1700	1830	▲	■	×	×

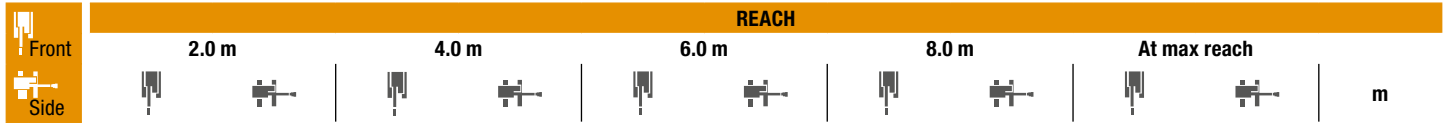
### ROCK BUCKETS (DIRECT FIT)

CAPACITY m <sup>3</sup> (ISO7451 HEAPED)	WIDTH mm	WEIGHT kg	ARM 2.21 m	ARM 2.63 m	ARM 3.25 m	ARM 4.04 m
0.92	900	1310	○	○	○	○
1.19	1100	1440	○	○	○	●
1.34	1200	1550	○	○	○	▲
1.56	1350	1650	○	●	●	■
1.78	1500	1800	●	▲	■	×
2.03	1700	1970	▲	■	×	×

○ Rated material density up to 2 ton/m<sup>3</sup> ● Rated material density up to 1.6 ton/m<sup>3</sup> ▲ Rated material density up to 1.4 ton/m<sup>3</sup>  
■ Rated material density up to 1.2 ton/m<sup>3</sup> × Not applicable

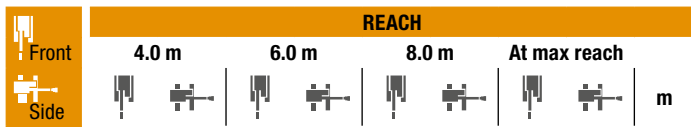
# LIFTING CAPACITY

## CX370D MONO



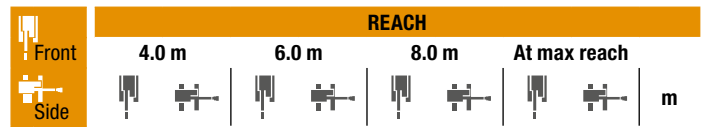
**LC UNDERCARRIAGE - Standard arm 3.25 m, 600 mm shoes, max reach 9.49 m**

Height	2.0 m	4.0 m	6.0 m	8.0 m	At max reach	Capacity (kg)	Capacity (kg)	Capacity (kg)	Capacity (kg)	Capacity (kg)	
8.0 m									6670*	6670*	7.37
6.0 m					8430*	7070		6270*	6190		8.62
4.0 m			15840*	15840*	10940*	10540	9010*	6800	6320*	5330	9.29
2.0 m			14610*	14610*	12890*	9710	9770	6450	6720*	4990	9.49
0 m			15540*	15540*	14010*	9160	9480	6180	7580*	5050	9.26
-2.0 m	12520*	12520*	20280*	16530	13800*	9000	9390	6100	8560	5600	8.56
-4.0 m	23110*	23110*	16800*	16800*	11740*	9180			8930*	7150	7.27



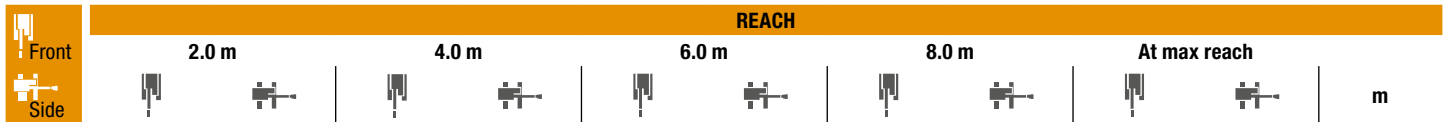
**LC UNDERCARRIAGE**  
Short arm 2.63 m, 600 mm shoes, max reach 8.97 m

Height	4.0 m	6.0 m	8.0 m	At max reach	Capacity (kg)	Capacity (kg)	Capacity (kg)	Capacity (kg)
8.0 m					9680*	9460		6.68
6.0 m		10130*	10130*	9270*	6960	8950*	6890	8.05
4.0 m		11800*	10400	9610*	6770	8740	5860	8.76
2.0 m		13550*	9660	9790	6480	8250	5480	8.97
0 m		14290*	9240	9570	6270	8470	5590	8.73
-2.0 m	19270*	16890	13590*	9180		9550*	6320	7.98
-4.0 m	15060*	15060*	10570*	9490		9060*	8460	6.57



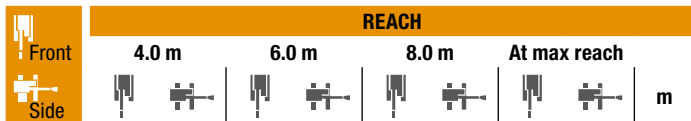
**LC UNDERCARRIAGE**  
S-Short arm 2.20 m, 600 mm shoes, max reach 8.50 m

Height	4.0 m	6.0 m	8.0 m	At max reach	Capacity (kg)	Capacity (kg)	Capacity (kg)	Capacity (kg)
8.0 m					10540*	10540*		6.04
6.0 m		10760*	10760*			9940*	7680	7.52
4.0 m		12360*	10340	10020*	6770	9580	6420	8.28
2.0 m		13930*	9650	9830	6520	8990	5980	8.5
0 m		14390*	9310	9660	6360	9270	6120	8.25
-2.0 m	18300*	17140	13330*	9320		10250*	7040	7.45
-4.0 m	13630*	13630*				9520*	9520*	5.91



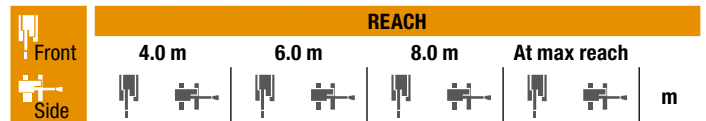
**NLC UNDERCARRIAGE - Standard arm 3.25 m, 600 mm shoes, max reach 9.49 m**

Height	2.0 m	4.0 m	6.0 m	8.0 m	At max reach	Capacity (kg)	Capacity (kg)	Capacity (kg)	Capacity (kg)		
8.0 m								6670*	6670*	7.37	
6.0 m					8430*	6550		6270*	5720	8.62	
4.0 m			15840*	15840*	10940*	9720	9010*	6280	6320*	4910	9.29
2.0 m			14610*	14610*	12890*	8900	9750	5930	6720*	4590	9.49
0 m			15540*	14860	14010*	8370	9460	5660	7580*	4640	9.26
-2.0 m	12520*	12520*	20280*	14870	13800*	8210	9370	5590	8550	5140	8.56
-4.0 m	23110*	23110*	16800*	15260	11740*	8380			8930*	6560	7.27



**NLC UNDERCARRIAGE**  
Short arm 2.63 m, 600 mm shoes, max reach 8.97 m

Height	4.0 m	6.0 m	8.0 m	At max reach	Capacity (kg)	Capacity (kg)	Capacity (kg)	Capacity (kg)
8.0 m					9680*	8760		6.68
6.0 m		10130*	10130*	9270*	6440	8950*	6370	8.05
4.0 m		11800*	9580	9610*	6250	8730	5400	8.76
2.0 m		13550*	8860	9770	5960	8230	5050	8.97
0 m		14290*	8450	9550	5760	8450	5140	8.73
-2.0 m	19270*	15220	13590*	8390		9550*	5810	7.98
-4.0 m	15060*	15060*	10570*	8690		9060*	7770	6.57



**NLC UNDERCARRIAGE**  
S-Short arm 2.20 m, 600 mm shoes, max reach 8.50 m

Height	4.0 m	6.0 m	8.0 m	At max reach	Capacity (kg)	Capacity (kg)	Capacity (kg)	Capacity (kg)
8.0 m					10540*	10400		6.04
6.0 m		10760*	10210			9940*	7110	7.52
4.0 m		12360*	9520	10020*	6260	9560	5930	8.28
2.0 m		13930*	8850	9810	6000	8970	5510	8.5
0 m		14390*	8510	9640	5850	9250	5640	8.25
-2.0 m	18300*	15470	13330*	8520		10250*	6470	7.45
-4.0 m	13630*	13630*				9520*	9150	5.91

\* The above loads (kg) are compliant to the ISO standards and refer to the excavator equipped without bucket. The indicated loads are no more than 87% of hydraulic system lift capacity or 75% of static tipping load. Values marked with an asterisk (\*) are limited by the hydraulic lifting capacity.



# LIFTING CAPACITY

## CX370D 2 PIECE BOOM

Front Side	REACH											
	0.0 m		2.0 m		4.0 m		6.0 m		8.0 m		At max reach	

### LC UNDERCARRIAGE - Standard arm 3.25 m, 600 mm shoes, max reach 9.71 m

8.0 m								8200*	8200*			6720*	6720*	7.64
6.0 m								8570*	8570*	6750*	6750*	5790*	5790*	8.86
4.0 m					18620*	18620*		9910*	9910*	9780*	8510	5430*	5160	9.50
2.0 m			16890*	16890*	21150*	18990		12320*	10710*	7790*	6830	5410*	4860	9.70
0 m			20110	20110	21730*	18650		14060*	10280	15290*	11450	5710*	4940	9.48
-2.0 m	20410*	20410*	28440*	28440*	22160*	17750		14180*	9740	9300*	6260	6400*	5490	8.80
-4.0 m	19960*	19960*	36330*	36330*	20250*	17700		22830*	22830*			5580*	5580*	7.06

### LC UNDERCARRIAGE - Short arm 2.63 m, 600 mm shoes, max reach 9.16 m

10.0 m					12540*	12540*						12010*	12010*	4.43
8.0 m										8860*	8860*	7850*	7850*	6.93
6.0 m					13350*	13350*	9150*	9150*	7270*	7000	6580*	6540		8.25
4.0 m					19280*	19280*	10640*	10540	7500*	6970	6110*	5590		8.94
2.0 m					21130*	18780	13210*	10820	8150*	6700	6070*	5250		9.15
0 m			20110*	20110*	21810*	18220	14080*	10090	8930*	6380	6430*	5380		8.91
-2.0 m	19200*	19200*	33470*	33470*	22130*	17640	14150*	9590	7620*	6260	6260*	6090		8.19
-4.0 m			35040*	35040*	17730*	17730*	8670*	8670*						

### NLC UNDERCARRIAGE - Standard arm 3.25 m, 600 mm shoes, max reach 9.71 m

8.0 m								8200*	8200*			6720*	6720*	7.64
6.0 m								8570*	8570*	6750*	6720*	5790*	5460	8.86
4.0 m					18620*	18010		9910*	9890	9780*	7820	5430*	4720	9.50
2.0 m			16890*	16890*	21150*	17320		12320*	10220	7790*	6340	5410*	4440	9.70
0 m			20110*	20110*	21730*	16800		14060*	9400	15290*	10400	5710*	4510	9.48
-2.0 m	20410*	20410*	28440*	28440*	22160*	15930		14180*	8870	9300*	5710	6400*	5000	8.80
-4.0 m	19960*	19960*	36330*	36330*	20250*	15880		22830*	22830*			5580*	5580*	7.06

### NLC UNDERCARRIAGE - Short arm 2.63 m, 600 mm shoes, max reach 9.16 m

10.0 m					12540*	12540*						12010*	12010*	4.43
8.0 m								8860*	8860*			7850*	7850*	6.93
6.0 m					13350*	13350*	9150*	9150*	7270*	6430	6580*	6000		8.25
4.0 m					19280*	17840	10640*	9860	7500*	6400	6110*	5110		8.94
2.0 m					21130*	17110	13210*	9930	8150*	6140	6070*	4800		9.15
0 m			20110*	20110*	21810*	16390	14080*	9210	8930*	5830	6430*	4910		8.91
-2.0 m	19200*	19200*	33470*	33470*	22130*	15830	14150*	8730	7620*	5710	6260*	5560		8.19
-4.0 m			35040*	35040*	17730*	15940	8670*	8670*						

\* The above loads (kg) are compliant to the ISO standards and refer to the excavator equipped without bucket. The indicated loads are no more than 87% of hydraulic system lift capacity or 75% of static tipping load. Values marked with an asterisk (\*) are limited by the hydraulic lifting capacity.

# BUCKETS

## CX370D MONO

### CX370D LC

#### HEAVY DUTY BUCKETS (DIRECT FIT)

CAPACITY m <sup>3</sup> (ISO7451 HEAPED)	WIDTH mm	WEIGHT kg	ARM 2.21 m	ARM 2.63 m	ARM 3.25 m
0.91	900	1220	○	○	○
1.19	1100	1340	○	○	○
1.33	1200	1440	○	○	○
1.54	1350	1540	○	○	○
1.75	1500	1670	○	○	●
2.03	1700	1830	●	●	▲
2.17	1800	1900	●	▲	■

#### HEAVY DUTY BUCKETS (QUICK COUPLED)

CAPACITY m <sup>3</sup> (ISO7451 HEAPED)	WIDTH mm	WEIGHT kg	ARM 2.21 m	ARM 2.63 m	ARM 3.25 m
0.91	900	1220	○	○	○
1.19	1100	1340	○	○	○
1.33	1200	1440	○	○	○
1.54	1350	1540	○	○	●
1.75	1500	1670	○	●	▲
2.03	1700	1830	●	▲	■
2.17	1800	1900	▲	■	×

#### ROCK BUCKETS (DIRECT FIT)

CAPACITY m <sup>3</sup> (ISO7451 HEAPED)	WIDTH mm	WEIGHT kg	ARM 2.21 m	ARM 2.63 m	ARM 3.25 m
0.92	900	1310	○	○	○
1.19	1100	1440	○	○	○
1.34	1200	1550	○	○	○
1.56	1350	1650	○	○	○
1.78	1500	1800	○	○	●
2.03	1700	1970	●	●	▲
2.18	1800	2070	●	▲	■

#### ROCK BUCKETS (QUICK COUPLED)

CAPACITY m <sup>3</sup> (ISO7451 HEAPED)	WIDTH mm	WEIGHT kg	ARM 2.21 m	ARM 2.63 m	ARM 3.25 m
0.92	900	1310	○	○	○
1.19	1100	1440	○	○	○
1.34	1200	1550	○	○	○
1.56	1350	1650	○	○	●
1.78	1500	1800	●	●	■
2.03	1700	1970	●	■	×
2.18	1800	2070	▲	■	×

### CX370D NLC

#### HEAVY DUTY BUCKETS (DIRECT FIT)

CAPACITY m <sup>3</sup> (ISO7451 HEAPED)	WIDTH mm	WEIGHT kg	ARM 2.21 m	ARM 2.63 m	ARM 3.25 m
0.91	900	1220	○	○	○
1.19	1100	1340	○	○	○
1.33	1200	1440	○	○	○
1.54	1350	1540	○	○	●
1.75	1500	1670	○	●	▲
2.03	1700	1830	●	▲	■
2.17	1800	1900	▲	■	×

#### HEAVY DUTY BUCKETS (QUICK COUPLED)

CAPACITY m <sup>3</sup> (ISO7451 HEAPED)	WIDTH mm	WEIGHT kg	ARM 2.21 m	ARM 2.63 m	ARM 3.25 m
0.92	900	1310	○	○	○
1.19	1100	1440	○	○	○
1.34	1200	1550	○	○	●
1.56	1350	1650	○	●	▲
1.78	1500	1800	●	▲	■
2.03	1700	1970	▲	■	×
2.18	1800	2070	■	×	×

#### ROCK BUCKETS (DIRECT FIT)

CAPACITY m <sup>3</sup> (ISO7451 HEAPED)	WIDTH mm	WEIGHT kg	ARM 2.21 m	ARM 2.63 m	ARM 3.25 m
0.92	900	1310	○	○	○
1.19	1100	1440	○	○	○
1.34	1200	1550	○	○	○
1.56	1350	1650	○	○	●
1.78	1500	1800	○	●	▲
2.03	1700	1970	●	▲	■
2.18	1800	2070	▲	■	×

#### ROCK BUCKETS (QUICK COUPLED)

CAPACITY m <sup>3</sup> (ISO7451 HEAPED)	WIDTH mm	WEIGHT kg	ARM 2.21 m	ARM 2.63 m	ARM 3.25 m
0.92	900	1310	○	○	○
1.19	1100	1440	○	○	○
1.34	1200	1550	○	○	●
1.56	1350	1650	○	●	■
1.78	1500	1800	●	■	×
2.03	1700	1970	▲	■	×
2.18	1800	2070	■	×	×

○ Rated material density up to 2 ton/m<sup>3</sup> ● Rated material density up to 1.6 ton/m<sup>3</sup> ▲ Rated material density up to 1.4 ton/m<sup>3</sup>  
 ■ Rated material density up to 1.2 ton/m<sup>3</sup> × Not applicable

# BUCKETS

## CX370D 2 PIECE BOOM

### CX370D LC

#### HEAVY DUTY BUCKETS (DIRECT FIT)

CAPACITY m <sup>3</sup> (ISO7451 HEAPED)	WIDTH mm	WEIGHT kg	ARM 2.63 m	ARM 3.25 m
0.91	900	1220	○	○
1.19	1100	1340	○	○
1.33	1200	1440	○	○
1.54	1350	1540	○	○
1.75	1500	1670	●	●
2.03	1700	1830	●	▲
2.17	1800	1900	▲	■

#### ROCK BUCKETS (DIRECT FIT)

CAPACITY m <sup>3</sup> (ISO7451 HEAPED)	WIDTH mm	WEIGHT kg	ARM 2.63 m	ARM 3.25 m
0.92	900	1310	○	○
1.19	1100	1440	○	○
1.34	1200	1550	○	○
1.56	1350	1650	○	●
1.78	1500	1800	●	●
2.03	1700	1970	▲	■

#### HEAVY DUTY BUCKETS (QUICK COUPLED)

CAPACITY m <sup>3</sup> (ISO7451 HEAPED)	WIDTH mm	WEIGHT kg	ARM 2.63 m	ARM 3.25 m
0.91	900	1220	○	○
1.19	1100	1340	○	○
1.33	1200	1440	○	○
1.54	1350	1540	●	●
1.75	1500	1670	▲	■
2.03	1700	1830	■	×

#### ROCK BUCKETS (QUICK COUPLED)

CAPACITY m <sup>3</sup> (ISO7451 HEAPED)	WIDTH mm	WEIGHT kg	ARM 2.63 m	ARM 3.25 m
0.92	900	1310	○	○
1.19	1100	1440	○	○
1.34	1200	1550	○	●
1.56	1350	1650	●	▲
1.78	1500	1800	▲	■
2.03	1700	1970	■	×

### CX370D NLC

#### HEAVY DUTY BUCKETS (DIRECT FIT)

CAPACITY m <sup>3</sup> (ISO7451 HEAPED)	WIDTH mm	WEIGHT kg	ARM 2.63 m	ARM 3.25 m
0.91	900	1220	○	○
1.19	1100	1340	○	○
1.33	1200	1440	○	○
1.54	1350	1540	○	●
1.75	1500	1670	●	▲
2.03	1700	1830	▲	■
2.17	1800	1900	■	×

#### ROCK BUCKETS (DIRECT FIT)

CAPACITY m <sup>3</sup> (ISO7451 HEAPED)	WIDTH mm	WEIGHT kg	ARM 2.63 m	ARM 3.25 m
0.92	900	1310	○	○
1.19	1100	1440	○	○
1.34	1200	1550	○	○
1.56	1350	1650	●	●
1.78	1500	1800	●	■
2.03	1700	1970	■	×

#### HEAVY DUTY BUCKETS (QUICK COUPLED)

CAPACITY m <sup>3</sup> (ISO7451 HEAPED)	WIDTH mm	WEIGHT kg	ARM 2.63 m	ARM 3.25 m
0.91	900	1220	○	○
1.19	1100	1340	○	●
1.33	1200	1440	●	●
1.54	1350	1540	▲	■
1.75	1500	1670	■	×

#### ROCK BUCKETS (QUICK COUPLED)

CAPACITY m <sup>3</sup> (ISO7451 HEAPED)	WIDTH mm	WEIGHT kg	ARM 2.63 m	ARM 3.25 m
0.92	900	1310	○	○
1.19	1100	1440	○	●
1.34	1200	1550	●	▲
1.56	1350	1650	▲	■
1.78	1500	1800	■	×

www.casece.com  
**EXPERTS FOR THE REAL WORLD**  
**SINCE 1842**

**CASE**  
CONSTRUCTION



Form No. 20283GB - MediaCross Firenze - 01/25

**CNH INDUSTRIAL  
DEUTSCHLAND GMBH**  
Case Baumaschinen  
Benzstr. 1-3 - D-74076 Heilbronn  
DEUTSCHLAND

**CNH INDUSTRIAL  
MAQUINARIA SPAIN, S.A.**  
Avenida Aragón 402  
28022 Madrid - ESPAÑA

**CNH INDUSTRIAL FRANCE, S.A.**  
16-18 Rue des Rochettes  
91150 Morigny-Champigny  
FRANCE

**CNH INDUSTRIAL ITALIA SPA**  
Lungo Stura Lazio 19  
10156, Torino  
ITALIA

**CASE CONSTRUCTION EQUIPMENT**  
Cranes Farm Rd  
Basildon - SS14 3AD  
UNITED KINGDOM

**NOTE:** Standard and optional fittings can vary according to the demands and specific regulations of each country. The illustrations may include optional rather than standard fittings - consult your Case dealer. Furthermore, CNH Industrial reserves the right to modify machine specifications without incurring any obligation relating to such changes.

Conforms to directive 2006/42/EC

**CASE**  
**00800-2273-7373**

The call is free from a land line.  
Check in advance with your Mobile Operator if you will be charged. Toll free number not available from all calling areas.

