

WHEEL LOADER - WI70D+ FORAGE POWER



**CONSTRUCTION POWER.
INDUSTRIAL
PRODUCTIVITY.**



BUILT FOR SILAGE EXCELLENCE.

New Holland's WI70D+ Forage Power is a purpose-built evolution of the WI70D Wheel Loader—designed specifically for silage clamping. It's engineered for silage contractors who demand more: more pushing power, more uptime, more autonomy, more comfort.

This version features 37% higher torque versus the standard WI70D and its new 6-speed gearbox ensures maximum pushing force and efficiency—especially on steep slopes. The unique cooling box design with self-cleaning reverse fan provides outstanding cooling efficiency and more uptime. A 400-litre diesel tank ensures long-lasting autonomy during peak harvest days. And with the engine speed control function, contractors can travel farm-to-farm with less fatigue and more control.



6-SPEED TRANSMISSION WITH LOCK-UP

To maximise clamp performance, lock-up engages from first gear, significantly boosting pushing power. The WI70D+ Forage Power features 100% front differential locks and a self-locking limited-slip rear differential for exceptional traction control.



PRECISE CONTROL WITH POWER INCH

The Power Inch function gives the operator full control by proportionally disengaging the drive as the brake is applied. This ensures smooth, precise unloading—even on steep slopes—without the risk of rollback.

THE HEART OF HIGH-PERFORMANCE SILAGING.



BEST-IN-CLASS TORQUE-TO-WEIGHT RATIO

Powered by a 6.7-litre Stage V FPT engine, the W170D+ Forage Power delivers 255hp and 1,300Nm of torque. Its superior torque ensures top performance under heavy loads and on steep slopes—where torque matters more than peak power.

EFFICIENT AFTER-TREATMENT-SYSTEM

The HI-eSCR 2 system complies with Stage V emissions standards without the need for exhaust gas recirculation (EGR), resulting in lower maintenance requirements and enhanced engine reliability.

FUTURE-PROOF FUEL COMPATIBILITY

New Holland Wheel Loaders run on B7 Biodiesel, HVO, and all XTL synthetic fuels (DIN EN 15940), ensuring long-term sustainability and flexibility.



OPTIMUM WEIGHT DISTRIBUTION

The D+ series features a rear-mounted engine for ideal weight balance, eliminating extra ballast and lowering the centre of gravity for superior stability. This layout also improves ground-level access to service points—enhancing uptime and safety.

UNIQUE COOLING PACKAGE

The D+ series features a cooling cube layout with unstacked radiators, allowing each of the five main radiators to receive direct airflow. The programmable reversible fan pushes cool air through each radiator individually, preventing hot air from circulating between them. This design reduces fan workload and power consumption—ensuring efficient, reliable cooling even during demanding silage clamping operations.



BUILT FOR UNINTERRUPTED WORK

To support extended operations, the W170D+ is equipped with a large 400-litre diesel tank—minimizing refuelling stops and maximizing productivity.



REACH HIGHER, WORK SMARTER

The W170D+ Forage Power delivers top performance with powerful Z-kinematics and a Long Reach loader arm, offering excellent visibility and the ability to load even the highest trailers.

YOUR ALL-DAY COMFORT ZONE.



PANORAMIC VISIBILITY

The D+ series cab offers near-360° visibility through an elevated driving position, curved glass, and slim pillars. A curved one-piece windshield provides a clear view of the loader arm and surroundings—ideal for precise work in tight spaces. For added safety, a standard 178° rear-view camera activates automatically in reverse and displays on the 8" screen.



PREMIUM COMFORT AND SAFETY

Built for long shifts, the D+ series cab offers easy access via 180° doors, a quiet 68dB(A) workspace, and full FOPS/ROPS certification. Operators enjoy a well-designed cab that provides a comfortable and ergonomic working environment, supporting efficiency and focus. Advanced ventilation and low-vibration suspension contribute to consistent comfort during daily operations. Selected comfort and connectivity features are available as optional equipment.



JOYSTICK STEERING CONTROL (Optional)

Joystick steering on the left armrest reduces operator fatigue and boosts productivity in repetitive-cycle tasks like truck loading. With selectable aggressiveness—Smooth, Moderate, or Aggressive—it adapts to your working style for optimal comfort and control.

SMART AUTOMATION FOR SEAMLESS OPERATION.

EASY TO USE

The D+ series cab is designed for intuitive operation. All controls are ergonomically grouped around the multifunction joystick, with three configurable buttons on the right armrest and a soft-touch keyboard on the side console. The armrest, mounted on the air-suspended seat, moves with the seat—ensuring consistent comfort even on uneven terrain.



1 AUTOMATED EFFICIENCY

New Holland D+ Wheel Loaders feature “Click & Dig” automation for fast, efficient loading: Autodig, Autodump, Autometering, and a customizable Recorded Mode—all activated with a switched and a joystick movement.

2 SMART FEATURES

Return-to-Dig, Return-to-Height, and Return-to-Travel streamline repetitive tasks by reducing operator fatigue and ensuring consistent precision. Activated via joystick, they function independently of attachments and retain target positions even after engine restart.

3 EFFORTLESS TRAVEL BETWEEN FARMS

The engine speed control system allows operators to set a target rpm, reducing the need to press the accelerator during long-distance travel. Ideal for contractors moving between farms, it enhances comfort and reduces fatigue.



SILAGE-READY FENDERS

Height and width-adjustable fenders with removable extensions prevent grass build-up and protect against damage during close contact with silage walls—ensuring the tyres, not the fenders, take the hit.



LED LIGHTING FOR LONG DAYS (Optional)

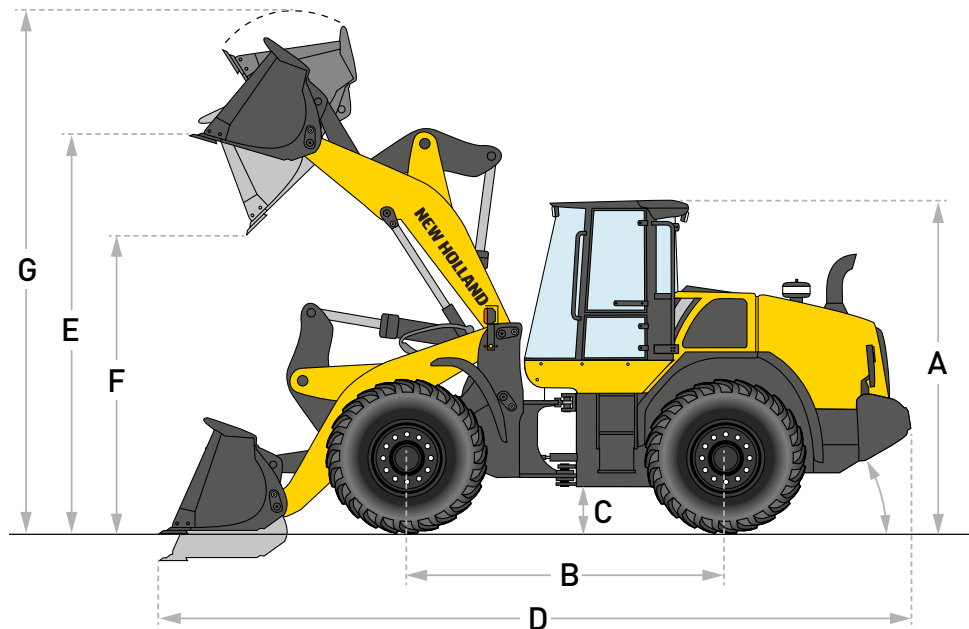
During long harvest days, the W170D+ keeps productivity high with up to ten high-intensity LED work lights and two rear hood lights, delivering a total of 43,000 lumens. A new egress lighting option ensures safe exit after shutdown.

W170D + Forage Power

SPECIFICATIONS		
Model	W170D+ Forage Power	
Engine		
Peak engine power	[kW/hp(CV)]	187/255
Max. Torque	(Nm)	1300
No. cylinders		6
Displacement	(l)	6.7
Aspiration and Injection	Turbocharger with air-to-air cooling. No EGR valve is used: Only fresh air is taken for combustion and no extra cooling system is needed.	
Exhaust gas treatment and Exhaust level	HI-eSCR 2 (DOC+SCRoF)	
Fuel tank capacity	(l)	400
DEF (AdBlue) capacity	(l)	41.3
WORK HYDRAULICS		
System and pump type	Variable displacement pump with closed centre	
Max pump flow	(l/min)	209
Max. system pressure	(bar)	250
Pilot control boom / 3. service	Electro-hydraulic control	
Hydraulics capacity	(l)	180
DRIVELINE		
Type of transmission	Ecoshift: 6-speed powershift with lock up from the first gear. Lock up clutch eliminates torque converter losses from first gear up to sixth gear. Intelligent Clutch Cut Off (ICCO) with Power Inch: Proportional declutching	
Max speed (std. / opt.)	(km/h)	50* / 20 *limited to 40 km/h if required by specific country regulations"
Standard tyres	Michelin MegaXBib 750/65R26	
Oscillating angle rear axle	16°	
Differential lock front and rear	100% differential lock in the front and limited slip differential in the rear	
BRAKES		
Service brake	Maintenance free, self-adjusting wet 4-wheel disc brakes	
Parking brake	With the negative brake, all four wheels lock automatically when the engine shuts off	
ELECTRICAL SYSTEM		
Onboard voltage	(V)	24
Cab		
Protection against falling objects (FOPS)	According to ISO 3449:2005	
Protection against roll over (ROPS)	According to ISO 3471:2008	
Sound pressure level at operator's station - LpA - ISO 6396:2008	[dB(A)]	68
Outside sound power level - LwA - EU Directive 2000/14/EC	[dB(A)]	103

W170D + Forage Power		
	Z-BAR Standard	Z-BAR Long Reach
DIMENSIONS		
A - Overall height (mm)		3437
Overall height with beacon (mm)		3741
C - Ground clearance (mm)		450
D - Overall length with 4.0m ³ bucket (mm)	8411	8777
Overall width w/o bucket (mm)		2757
Turning Radius Outside of Tyres (mm)		5847
B - Wheelbase (mm)		3253
Rear Wheel to Rear (mm)		2069
E - Hinge pin height (mm)	4141	4539
Rear Departure Angle (°)		31°
Specification with 2.7m ³ bucket		
F - Dump Height @ 45° Dump (mm)	2902	3300
G - Max. bucket height (mm)	5515	5913
Bucket Reach @ 45° Dump Angle - 2m Height (mm)	1570	1887
Standard bucket volume (m ³)		2.7
SPECIFICATION WITH FORKS		
Maximum stacking height (mm)	4179	4577
Fork Reach @ Full Height (mm)	551	526
Maximum Fork Reach (mm)	1431	1718

PERFORMANCE WITH BUCKET		
Bucket Tipping Load – Straight (kg)	12418	10507
Bucket Tipping Load @ 40° Turn (kg)	10606	8912
Payload – 2,7 m ³ Bucket - Rigid Tyres (ISO 14397-1) (kg)	4568	3849
Operating Weight - Bucket (kg)	16269	16471
Breakout Force (kg)	12065	11939
PERFORMANCE WITH FORKS		
Forks Tipping Load - Straight (kg)	10227	9020
Forks Tipping Load @ 40° Turn (kg)	8808	7731
Payload – Forks 80 % (Firm and Level Ground) (kg)	4497	4182
Payload – Forks 60 % (Uneven terrain) (kg)	4497	4182
Operating Weight Forks (kg)	15579	15780





The New Holland dealer network is, in itself, the best guarantee of continued productivity for the machines it delivers to its customers. New Holland service technicians are fully equipped to resolve all maintenance and repair issues, with each and every service point providing the high standards they are obliged to observe under New Holland's stringent quality guidelines. The New Holland global parts network ensures fast, reliable, replacement parts for less downtime, increased productivity and, of course, profitable operation for its customers.

Learn more at www.newholland.com

Printed on recycled paper
CoC-FSC 000010 CQ Mixed sources



ELEMENTAL
CHLORINE
FREE
GUARANTEED

AT YOUR OWN DEALERSHIP

The information contained in this brochure is intended to be of general nature only. The NEW HOLLAND CONSTRUCTION MACHINERY S.p.A. company may at any time and from time to time, for technical or other necessary reasons, modify any of the details or specifications of the product described in this brochure. Illustrations do not necessarily show products in standard conditions. The dimensions, weights and capacities shown herein, as well as any conversion data used, are approximate only and are subject to variations within normal manufacturing techniques.