



CASE
CONSTRUCTION

HYDRAULIC EXCAVATORS



CX235C SR

MAIN REASONS TO CHOOSE THE C-SERIES

FULL SPECIFICATION EXCAVATORS

- Wide offering of auxiliary hydraulics (multi-function and low flow)
- Undercarriage equipped with the blade as standard

HIGH RELIABILITY

Robust design, high quality components and durable materials

GREAT VERSATILITY

- 3 available power modes to match customers needs (A, H, SP)
- Auto Power boost job-sensing hydraulic pressure increase



COMFORTABLE AND SAFE CAB

- Certified ROPS and FOPS level 2 cab
- Larger cab with multi-adjustable suspension seat and increased foot space
- Improved air conditioning system
- Wide glazed area for an outstanding visibility

BEST IN CLASS PRECISION AND CONTROLLABILITY

A very smooth control to get the job done easily and in total safety

HIGH EFFICIENCY

- CASE Intelligent Hydraulic System (CIHS), in combination with the powerful Tier 3 diesel engine, leads to fuel savings of up to 9% compared to the previous model.
- Short Radius design, ideal for any jobsite where space is limited

FAST CYCLES

Pump Torque Variable Control provides perfect control of the engine and hydraulic system, further boosting productivity

SAFE OPERATION AND MAINTENANCE

- All filters grouped together for an easy and safe access from the ground
- Standard EMS bushing cut greasing intervals to every 1,000 hours



C-SERIES

HYDRAULIC EXCAVATORS



SHORT SWING RADIUS

The CX235C SR is the perfect machine for road construction, bridges projects and in urban construction sites, any jobsite where space is limited, without the risk of machines damage.

ROBUST QUALITY

The short radius machines continue a CASE tradition of robust design and high quality build. By bringing together the highest quality components and materials, in a machine that has been designed to work productively, CASE has further improved reliability and durability, reducing ownership costs and cutting downtime for the customer.



SIMPLIFIED MAINTENANCE

A redesigned upper structure provides access to all service points from ground level, with large side opening access doors. All filters are grouped together for easy access, reducing service time. A synthetic filter extends hydraulic oil service intervals to 5,000 hours while engine oil change intervals are set at a competitive 500 working hours. In addition remote greasing points and standard EMS bushings cut greasing intervals to every 1,000 hours. Side-by-side coolers and radiators are easily accessed for cleaning and maintenance.



PERFORMANCE AND EFFICIENCY

The CASE Intelligent Hydraulic System (CIHS) incorporates a host of energy saving, performance enhancing functions, to boost efficiency and machine output. A simple operating mode dial delivers three working modes with Super Power set to provide maximum horsepower and hydraulic output. A Powerboost function provides an 8 second boost for maximum digging performance. 5 Energy saving functions allows to optimise performances reducing the fuel consumption depending on the working conditions.

OPERATOR COMFORT AND SAFETY

ROPS and FOPS Level 2 cab delivers an almost automotive noise level. Efficient air conditioning system, multi-adjustable suspension seating, increased foot space, cup holder and storage compartments deliver the most productive working environment possible. The new full-colour Multifunction Display provides access to on-board diagnostics, reducing downtime for service and maintenance. An ECO gauge provides a constant real-time recording of fuel consumption.







C-SERIES

HYDRAULIC EXCAVATORS

ENGINE

Model _____ Tier 3 certified ISUZU GI-4HK1X
 Type _____ Water-cooled, 4-cycle diesel, 4-cylinder in line,
 High pressure common rail system (electric control), Turbocharger with air
 cooled intercooler
 Number of cylinders _____ 4
 Bore/Stroke _____ 115 x 125 mm
 Horsepower ISO 9249 _____ 117.3 kW @ 1800 min-1
 Maximum torque ISO 9249 _____ 608 Nm @ 1600 min-1

HYDRAULIC SYSTEM

Max oil flow _____ 2 x 211 l/min @ 1800 min-1
 2 variable displacement axial piston pumps with regulating system
 Working circuit pressure _____
 Boom/Arm/Bucket _____ 343 Bar / 4974.8 PSI
 Boom/Arm/Bucket (with auto power up) _____ 368 Bar / 5337.4 PSI
 Swing circuit _____ 294 Bar / 4264.1 PSI
 Travel circuit _____ 343 Bar / 4974.8 PSI
 Auxiliary hydraulic flow and pressure for attachments _____ 343 Bar / 4974.8 PSI

SWING

Maximum swing speed _____ 11.8 min-1

WEIGHT

With 2,94 m Arm, 0.8 m³ bucket, 600 mm grouser shoe, operator, lubricant, coolant and full fuel tank

CX235C SR LC	WEIGHT (KG)
600 mm grouser shoe	24,200

TRAVEL

Travel motor _____ Variable displacement axial piston motor
 Max travel speed _____ 5.0 km/h (Automatic travel speed shifting)
 Low travel speed _____ 3.2 km/h
 Gradeability _____ 70% (35°)
 Drawbar pull _____ 201 kN

ELECTRICAL SYSTEM

Voltage _____ 24 V
 Alternator _____ 50 Amp

UNDERCARRIAGE

Number of carriers rollers Blade/LC (each side) _____ 2/2
 Number of track rollers Blade/LC (each side) _____ 7/8
 Number of shoes Blade/LC (each side) _____ 46/49
 Type of shoe _____ Triple grouser shoe

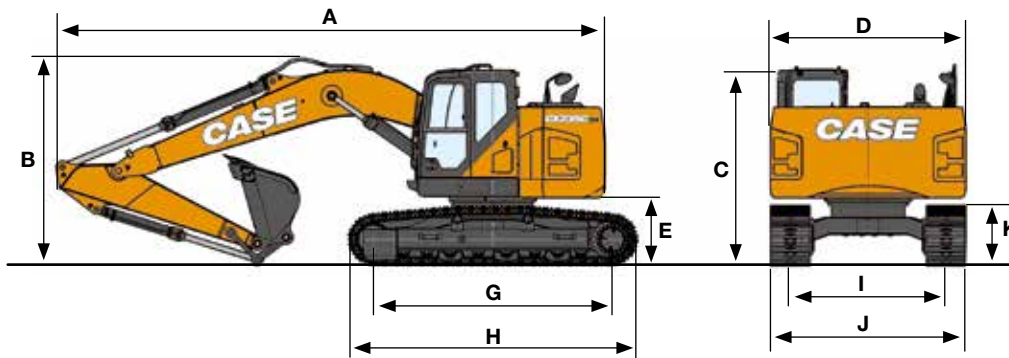
CAPACITIES

Fuel tank _____ 320 l
 Hydraulic system _____ 252 l
 Cooling system _____ 30.9 l
 Noise level inside cab _____ 73 dB(A)

With 2,94 m Arm, 0.8 m³ bucket, 600 mm grouser shoe, operator, lubricant, coolant and full fuel tank

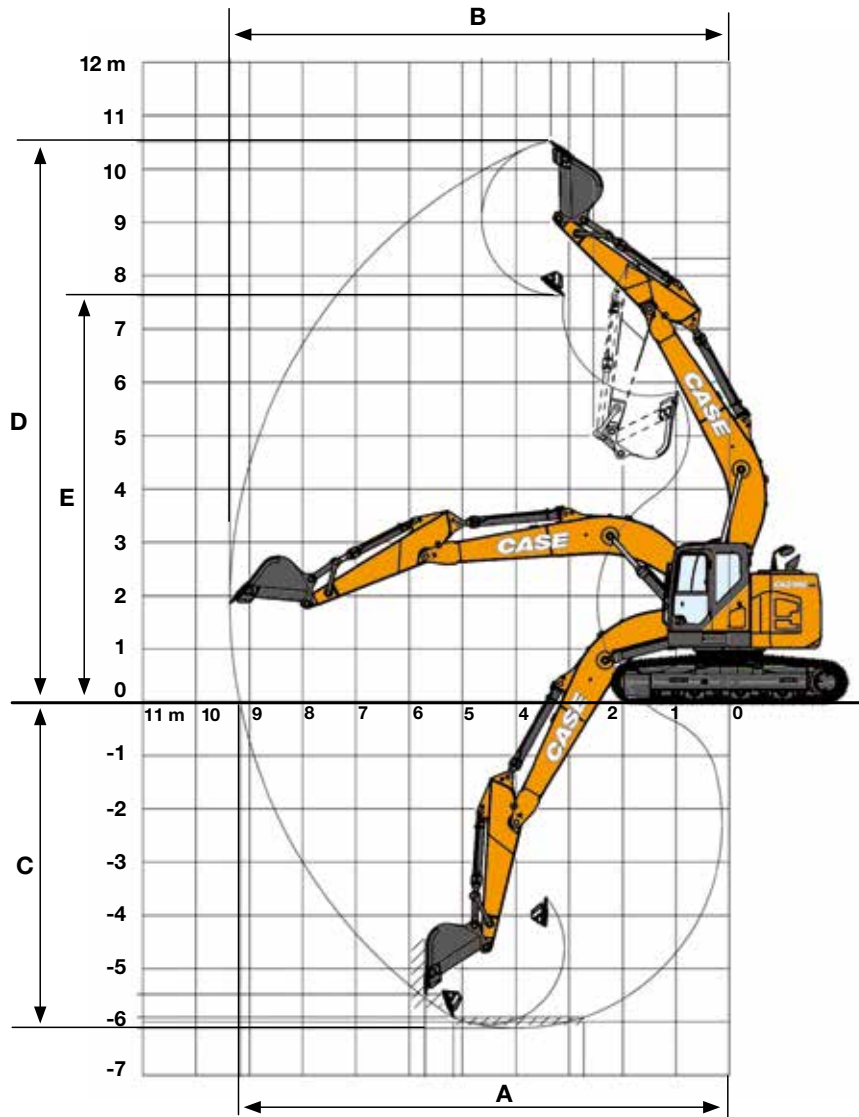
CX235C SR BLADE	WEIGHT (kg)
600 mm grouser shoe	25,600

GENERAL DIMENSIONS



CX235C SR		BLADE ARM 2.94 M	LC ARM 2.94 M
	Overall length (without attachment)	mm 4700	4470
A	Overall length (with attachment)	mm 9210	8830
B	Overall height (with attachment)	mm 3090	3090
C	Cab height	mm 3140	3040
D	Upper structure overall width	mm 2990	2990
	Swing (rear end) radius	mm 1720	1720
E	Clearance height under upper structure	mm 1020	1020
F	Minimum ground clearance	mm 440	440
G	Wheel base (Center to center of wheels)	mm 3370	3660
H	Crawler overall length	mm 4180	4470
I	Track gauge	mm 2200	2390
J	Undercarriage overall width (with 500 mm shoes)	mm 2800	2990
K	Crawler tracks height	mm 920	920

SPECIFICATIONS



CX235C SR

BLADE/LC ARM 2.4 M

BLADE/LC ARM 2.94 M

Boom length	mm	5700	5700
Bucket radius	mm	1450	1450
Bucket wrist action	°	177	177
A Maximum reach at GRP	mm	9180	9670
B Maximum reach	mm	9370	9850
C Max. digging depth	mm	6120	6650
D Max. digging height	mm	10520	10860
E Max. dumping height	mm	7630	7970

DIGGING FORCE

With 0,80 m³ bucket (ISO 6015)

CX235 SR

BLADE/LC ARM 2.4 M

BLADE/LC ARM 2.94 M

Arm digging force	kN	123	103
- with auto power up	kN	132	110
Bucket digging force	kN	142	142
- with auto power up	kN	152	152

LIFTING CAPACITY

Front 360°	REACH													
	0 m		1.5 m		3.0 m		4.5 m		6.0 m		7.5 m		At max reach	

CX235C BLADE. Version Standard arm. 2.94 m arm length, 0.80 m³ bucket (645 kg), 600G shoes, max reach 9.85 m - Blade down

9.0 m								3090*	3090*					2470*	2470*	6.26
7.5 m								3950*	3950*	2960*	2960*			2180*	2180*	7.76
6.0 m								4330*	4330*	3980*	3430			2080*	2080*	8.69
4.5 m																
3.0 m																
1.5 m																
0 m																
-1.5 m																
-3.0 m																
-4.5 m																
-6.0 m																

CX235C BLADE. Version Standard arm. 2.94 m arm length, 0.80 m³ bucket (645 kg), 600G shoes, max reach 9.85 m - Blade up

9.0 m								3090*	3090*					2470*	2470*	6.26
7.5 m								3950*	3950*	2960*	2960*			2180*	2180*	7.76
6.0 m								4330*	4330*	3980*	3270			2080*	2080*	8.69
4.5 m																
3.0 m																
1.5 m																
0 m																
-1.5 m																
-3.0 m																
-4.5 m																
-6.0 m																

* Hydraulic capacity 87%



STANDARD AND OPTIONAL

ENGINE

Isuzu 4-cylinder turbodiesel in line
Certified Tier 3
Electronic fuel injection
High pressure common rail system
Variable geometry turbo charger
Cooled Exhaust Gas Recirculation (CEGR)
Neutral safety start
Auto-engine warm up, emergency stop
Glow-plug pre-heat

Idle System:

Auto-idle
One-touch idle
Idle shut-down
EPF (Engine Protection Feature)
Dual-stage fuel filtration
Dual element air filter
Remote oil filter
Green plug oil drain
500-hour engine oil change interval

HYDRAULICS

Auto power boost
Auto swing priority
Auto travel speed change
Selectable work modes
Overload warning device
SWC - SWING RELIEF CONTROL
SSC - SPOOL STROKE CONTROL
BEC - BOOM ECONOMY CONTROL
AEC - AUTO ECONOMY CONTROL
SEC - SWING ECONOMY CONTROL

10 x auxiliary flow settings in memory
Auxiliary valve
Auxiliary pipe brackets
5,000 hour hydraulic oil change interval
1,000 hour hydraulic filter change interval
Hydraulic track adjustment
SAHR brake
10 x auxiliary flow settings in memory

UPPERSTRUCTURE

Common key vandal locks
Swivel guard belly pan
Rear view safety camera
4-point isolation mounted cab (fluid and spring)

ATTACHMENT

Bucket linkage with hook
Boom mounted work light (70 watt)
Attachment cushion valve
Arm and boom regeneration
Standard boom 5.70m
Arm 2.40 m HD / Arm 2.94 m
EMS bushings

OPERATOR STATION

ROPS/FOPS level 2 cab
Pressurised cab
Tempered safety glass
One-touch lock front window
Sun visor & rain deflector
AC/heat/defrost w/ auto climate control
Cup holder & ashtray
Interior dome light
Cloth covered air-suspension seat

Seat-belt
Adjustable armrests
Low-effort controls (short)
Radio mute switch on control lever
Controls pre-wired for auxiliary
Auxiliary select system
Straight travel
Aux-in port for personal electronics
Multifunction color monitor
Rear-view camera
Anti-theft system (start code system)
Rubber floor mat
12-volt electric socket
24-volt cigarette lighter
One-piece right hand window
2 internal & 3 external view mirrors
2 working lights (boom & upperstructure)
Beacon harness
2 cab top working lights
Windshield wiper / washer
Clear (Lexan) roof window w/sunshade
Storage compartments
On-board diagnostic system
Interior dome light (10W)
Sliding cockpit (100 mm)
Beacon harness
UNDERCARRIAGE
600 mm steel shoes, triple semigrouser strutted and sealed link
Full overlap turntable bearing tub
Single track guide

Standard and optional equipment shown can vary by country.



BUILDING A STRONG CASE.

Since 1842, at CASE Construction Equipment we have lived by an unwavering commitment to build practical, intuitive solutions that deliver both efficiency and productivity.

We continually strive to make it easier for our customers to implement emerging technologies and new compliance mandates.

Today, our global scale combined with our local expertise enables us to keep customers' real-world challenges at the center of our product development.

The vast CASE dealers' network is always ready to support and protect your investment and exceed your expectations, while also providing you with the ultimate ownership experience.

Our goal is to build both stronger machines—and stronger communities. At the end of the day, we do what's right for our customers and our communities so that they can count on CASE.

CASECE.com

NOTE: Standard and optional fittings can vary according to the demands and specific regulations of each country. The illustrations may include optional rather than standard fittings - consult your CASE dealer. Furthermore, CNH Industrial reserves the right to modify machine specifications without incurring any obligation relating to such changes.

Conforms to directive 2006/42/EC

