

FARMLIFT 742

7M HEIGHT
742



CASE IH

FARMLIFT

CASE IH



FARMLIFT. THE MODEL THAT LIFTS IT ALL.

Take your business to new heights.

Case IH continues its tradition of meeting the needs of modern farms with the latest Farmlift telehandler. This powerful model delivers a lift capacity of 4,200 kg and reaches heights up to 7 metres, combining the ruggedness, reliability, and operator comfort that define Case IH.

With enhanced styling, including new exterior design elements, and a complete new cab interior, they offer a fresh and modern look. Featuring a new 7 inch display and ergonomic controls on the armrest, they provide improved functionality. Equipped with smart hydraulics and a 140 l/min CCLS pump, they deliver optimal performance.



COMFORT

The new Farmlift gives you a seamless operation experience with a better overview, its user-friendly joystick, innovative 7 inch display, and redesigned controls.



EFFICIENCY

Take efficiency to new heights : Engine hood perfectly protected within the wheelbase, coupled with an innovative load monitor indicator featuring LED lights to ensure adherence to load limits.



PRODUCTIVITY

Boost your material handling rates with efficient 140 l/min CCLS pump, advanced electro-hydraulic self-leveling of tool carrier for precise control, and superior boom suspension for comfortable transport applications.



THE NEW FARMLIFT	2 – 3
OVERVIEW	4 – 5
INTRO	6 – 7
CAB	8 – 9
ENGINE & TRANSMISSION	10 – 11
BOOM & HYDRAULICS	12 – 13
SERVICE SOLUTIONS & SPECS	14 – 15

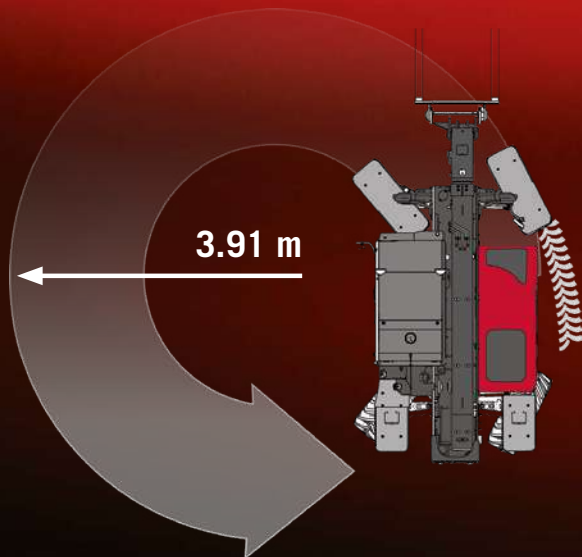
CASE IH

THE RIGHT FARMLIFT FOR EVERY JOB

Elevated Performance

With a powerful 4,200 kg maximum lift capacity and a robust design built for demanding tasks, the Farmlift 742 is made to handle tough agricultural workloads with ease. Designed for today's modern farms, it delivers superior operating comfort, fast loading times, and responsive handling—helping you get more done, faster.





FARMLIFT 742

Suited for businesses with extensive material volumes and strict requirements concerning efficiency, dependability, and convenience.

-  FPT Tier III I 4 cylinders 4,500 cm³
-  6x3 Auto-Shift powershift transmission
-  4WD with Limited-Slip-Differential
– Standard for front axle / optional for rear axle
-  460/70R24 or 500/70R24
-  **HIGH CAPACITY BOOM**
7 m lift height capacity
with 4.2 t lift capacity
-  **ALL-ROUND VISIBILITY**
9 % better visibility



DESIGNED FOR HANDLING EFFICIENCY

The all new Farmlift

140 l/min
piston pump

The Farmlift's transformation isn't merely an upgrade; it's a game-changing breakthrough. This remarkable evolution embodies power, all while setting new standards in efficiency and productivity. With improved ergonomics, unparalleled comfort, enhanced visibility, and accelerated cycle times, the Farmlift promises an intuitive, high-tech experience that elevates farming operations to new heights.

NEW STYLING AND VISIBILITY

- New bonnet design
- 9 % better visibility to the right-hand side
- Excellent 360° visibility all-round
- High visibility roof ensures a perfect view of the loader

ELECTRO-HYDRAULIC SELF-LEVELLING OF TOOL CARRIER

- Perfect accuracy in self levelling
- Less maintenance cost and time

FIELDOPS™ TELEMATICS

- Manage your machine data and fleet
- Proactive business decisions thanks to real time notifications

MAXIMUM STABILITY

- Low centre of gravity
- Rear mounted boom acts as a counter balance
- Longer wheelbase





360°
all-round visibility

146 hp
max power

EASY MAINTENANCE

- Extended engine service interval (600 hours)
- One piece bonnet and side panels allow easy access to the entire engine bay
- Fold-out radiators for easy cleaning

Models	Lift capacity	Max. reach	Engine rated / Max. power	Transmission	Load sensing hydraulic system
Farmlift 742	4.2 to	7.0 m	146 hp	6x3 Autoshift	140 l



A CAB THAT PUTS YOU FIRST

Take command in comfort

Upon entering the expansive and updated cab of our latest range, you'll instantly appreciate the enhanced right-side visibility, courtesy of a streamlined bonnet design, and a quieter environment. This comprehensive revamp offers unobstructed operator visibility and pairs it with our newly designed ergonomic controls and instruments for intuitive operation.

BEST-IN-CLASS VISIBILITY

Enhanced Visibility: The new full-length design of the Case IH Telehandler incorporates a new bonnet design that increases right-hand visibility by 9 %. It also features a high-visibility roof, providing an optimal upward view when working at height and a clear forward view over the dashboard for convenient attachment changes.

INSTRUMENTATION WITH STYLE

The advanced 7 inch display offers an at-a-glance view of all machine parameters, simplifying the setup of all machine functions. Additionally, the display incorporates the feed from a reverse camera, enhancing safety and maneuverability.

DESIGNED FOR COMFORT AND SAFETY

A wide door, accompanying steps, and rails ensure effortless entry into the climate-controlled cab. Emphasizing comfort, an air-suspended seat is provided, while an adjustable steering column simplifies accessibility.

FINGERTIP CONTROL AND ERGONOMICS

The advanced joystick, mounted on the seat, offers adjustable sensitivity for precision in controlling boom movements, managing both transmission and hydraulics. Positioned conveniently on the armrest, the new keypad puts critical functions within easy reach, ensuring clear visibility and accessibility from the operator's seat.

NEW LOAD MOMENT INDICATOR (LMI)

The LED lights clearly indicate the machine's current load level to the operator.





THE POWER YOU NEED

For any application

Engineered for exceptional fuel efficiency and high-level performance, Case IH Farmlifts incorporate trusted components for reliable operation. These are your dependable worktools, ready to tackle critical and demanding tasks.

POWER AND TORQUE

All Farmlift models boast a 4.5 L NEF engine for Tier III compliance. Farmlift 742 deliver 146 hp at impressive fuel efficient 1,800 rpm. Maximum torque levels of up to 591 Nm at 1,500rpm keep the machine pushing in the most arduous of conditions.

TIME-EFFICIENT. COST-EFFICIENT

Daily maintenance is easily managed thanks to the wide opening one piece bonnet and side panels. And with 600-hour service intervals, Farmlift telehandlers require the minimum of regular scheduled care.

SMART DESIGN

Courtesy of a compact design of the engine, the bonnet has become a fresh styling that significantly improves right hand visibility for the operator. It also facilitates daily checks as oil level dipstick and radiators that can be easily accessed and thoroughly cleaned.

ADVANTAGES

- Powerful Tier III engines
- Versatile engine matches all power requirements
- Impressive torque even at lower engine speeds
- 600-hour oil change intervals

WE SHIFTED UP A GEAR

For economic driving

Every Farmlift model comes standard with an electronically controlled 6x3 fullpowershift transmission, promising outstanding performance. Models equipped with a 145 hp engine feature a 40 kph transmission, providing best performance for road transport.

SHIFTING MODES

The standard 6x3 Autoshift is fully automatic through the forward speeds and can also be operated with the semi-automatic through forward gears 2-3-4. These models benefit from 40 kph top speed for faster travel between jobs, and a memory shuttle feature, where the power shuttle selects the last-used forward and reverse gear when changing direction.

SMOOTH OPERATION

Leveraging an innovative torque converter design, Farmlift delivers unparalleled response and immediate start-up. With wet multi-disc clutches, smooth gear transitions are ensured. A declutch button and an electronic modulation system further optimise operations, enhancing gear ratios for efficient loading applications.

STRONG AXLES FOR HIGH PAYLOAD

All Farmlifts are fitted with high dynamic load capability axles with limited slip differential (LSD) on the front axle, another can be specified for the rear axle. Inboard wet disc service brakes offer excellent stopping power whilst being well-protected and simple to service.

FOR SENSITIVE TASKS

Powershuttle commands are ergonomically positioned on the joystick, facilitating smooth directional shifts without letting go of the joystick. Moreover, advanced [customization](#) options are available, permitting the tailoring of Powershuttle's responsiveness to match personal preferences.



THE BEST BOOM IN THE BUSINESS

Boosted productivity at any height

Operators of Case IH Farmlift can trust in a sturdy telescopic boom that offers exceptional torsion resistance and payload capacity.

ELECTRO-HYDRAULIC SELF-LEVELLING

Using electronic sensors, this unique feature accomplishes automatic attachment levelling, bypassing the need for a telehandler's compensation cylinder. The benefits include full bucket capacity with no losses, great attachment levelling accuracy, less operator effort, and reduced maintenance time and cost.

SMOOTH RIDE CONTROL

Boom suspension enhances safety and comfort, delivering a smoother ride and improved stability.

STABILITY AND AGILITY

With a rear-mounted boom and a long wheelbase, it guarantees stability. Its under 4 m turning radius coupled with three steering modes ensures exceptional agility, even in tight spots. All these are made possible by a robust H-shaped ladder chassis, making it a specialist of handling high payloads.

**TWO ANGLE SENSORS
PROVIDE MORE PRECISE
MOVEMENT AND LEVELING
OF ATTACHMENTS**



FULL HYDRAULIC POWER

YOUR BEST LIFTING ASSET

The Farmlift's hydraulic system offers electro-hydraulic, proportional functions through a CCLS load-sensing system, ensuring precise control and fast response. It also includes smart features such as bucket return, adjustable boom reactivity, and shaking function to boost productivity thanks to shorter cycle times.

SPEED UP YOUR LOADING CYCLES

Two Farmlift models can come with a new variable displacement piston pump that delivers 140 l/min of hydraulic power for improved hydraulic multi-functioning.

EXTRA COMFORTABLE

All hydraulic features are electro-proportionally controlled by the integrated multifunction electronic joystick, located on the end of the seat armrest, offering ergonomic excellence. Furthermore, the system supports the simultaneous use of three functions, boosting efficiency while reducing downtime.

SMART HYDRAULIC FEATURES

The SMART HYDRAULIC FEATURES package offers intelligent systems for enhanced operator comfort, convenience, and task efficiency. One notable feature is the bucket shaking function, which efficiently empties sticky materials and accurately portions straw or silage.

Additionally, the automatic 'return to position' feature allows for seamless movement of attachments to a pre-set target position from any initial situation.

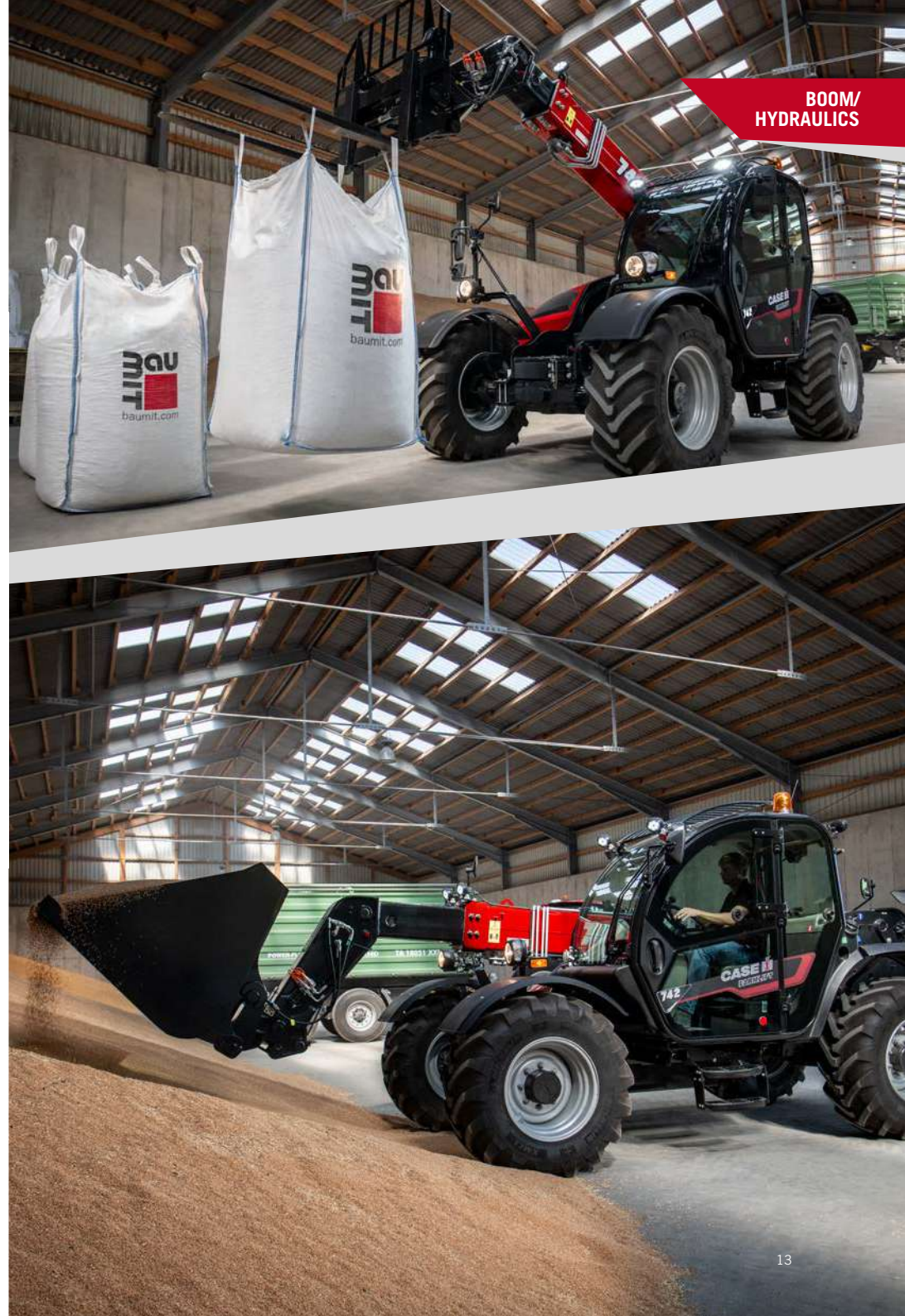
- Adjustable boom responsiveness
- Adjustable continuous flow w/engine speed control
- Vertical lift

QUICK MOUNTING AND DISMOUNTING

The optional quick coupling/uncoupling system option available on all Farmlifts makes changing attachments as fast and safe as possible.

ADVANTAGES

- CCLS 140 l/min. pump for shorter cycle times
- Auxiliary pressure release (APR) switch simplifies connecting attachments





PARTS AND SERVICES

Solutions for your farming

Our professional dealer network backed up by local Case IH teams, industry-leading Case IH support tools, modern training methods, best-in-class replacement parts, support and logistics performance. All you need for an excellent all-encompassing after-sales service to keep you farming.

Case IH GENUINE PARTS

Case IH genuine parts are engineered specifically for Case IH equipment. Our genuine parts and fluids are tested against the industry's highest quality standards and are backed by warranty and proven to provide optimal performance for your Case IH equipment.



CNH REMAN PARTS

CNH Reman parts are genuinely remanufactured parts that have been assembled and tested to meet OEM specifications. All CNH Reman parts are completely disassembled, inspected and reassembled to OEM specification, providing environmentally sustainable, like-new functionality for Case IH equipment.

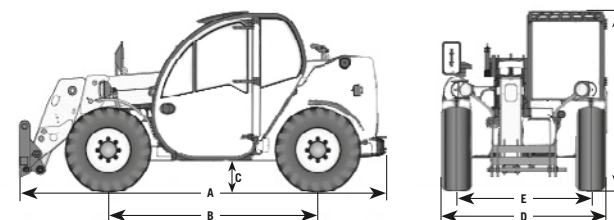


FLEETPRO™ PARTS

FLEETPRO™ parts are designed to fit your equipment on your farm regardless of brand or age. Over your lifetime, different machines come and go. Old or new, the FLEETPRO™ portfolio provides you with a wide selection of competitively priced parts options to meet your operation's unique equipment needs.



MODEL	FARMLIFT 742
Max. lift capacity (kg)	4,200
Max. lift height (m)	7
HYDRAULICS	
Piston Pump (140) litres	•
Hydraulic Oil tank capacity (litres)	105
CYCLING TIMES (SECONDS)	
Lift (140L / 160L piston pump)	6.7 / 5.2
Lower (140L / 160L piston pump)	5.2 / 5.2
Extend (140L / 160L piston pump)	6.2 / 5.4
Retract (140L / 160L piston pump)	4.5 / 4.1
Dump (140L / 160L piston pump)	2.8 / 2.8
Rollback (140L / 160L piston pump)	2.9 / 2.9
Total Time (140L / 160L piston pump)	28.3 / 25.6
BUCKET ANGLE	
Dump Angle	118°
Total Rotation Angle	142°
ENGINE	
Type	4 cylinder, EURO Tier III, Common Rail Diesel, Turbo Intercooler
Displacement (cm³)	4,485
Rated Engine Power ISO TR14396 - ECE R120 (kW/CV)	96 / 129 @2,200 rpm
Max. Engine Power	107 / 146 @1,800 rpm
Max. torque (Nm @ engine rpm)	591 @ 1,500
Fuel tank/Urea capacity (Litres)	140 / 27
TRANSMISSION	
6 x 3 Powershift (manual and auto shifting)	•
Max. Travel Speed (kph)	40
AXLES	
Limited Slip differential Front and rear	4WD
STEERING	
Steering Mode	2WS / 4WS / CRAB
WEIGHTS AND DIMENSIONS	
A. Length fork heel to counter weight (mm)	5,239
B. Wheel Track (mm)	3,000
C. Ground Clearance (mm)	415
D. Max. Width (mm)	2,340
E. Wheel Base (mm)	1,873
F. Cab Height (mm)	2,447
Total weight with forks and operator (kg)	8,000
WHEELS AND TYRES	
Standard	460 / 70 R24
Optional	500 / 70 R24



* To comply with legislation and specification in your country ¹⁾ with standard tyres ²⁾ ECE R120 correspond to ISO 14396 and 97/68/EC or 2000/25/EC
• Standard ○ Optional — not available



f y in @
caseih.com

SAFETY NEVER HURTS!™ Always read the Operators Manual before operating any equipment. Inspect equipment before using it, and be sure it is operating properly. Follow the product safety signs, and use any safety features provided. CNH Industrial Australia Pty Ltd reserves the right to make improvements in design and changes in specifications at any time without notice and without incurring any obligation to install them on units previously sold. Specifications, descriptions and illustrative material herein are as accurate as known at time of publication, but are subject to change without notice. Availability of some models and equipment builds varies according to the country in which the equipment is used.

©2024 CNH Industrial Australia Pty Ltd. All rights reserved. Case IH is a trademark registered in the United States and many other countries, owned by or licensed to CNH Industrial N.V., its subsidiaries or affiliates. Any trademarks referred to herein, in association with goods and/or services of companies other than CNH Industrial Australia Pty Ltd, are the property of those respective companies. Printed in Australia.
www.caseih.com 225CIHFARMLIFT742B July 2025

CASE IH