

PUMA SERIES

TRACTORS FROM
185 – 260 hp



CASE IH

PUMA SERIES

CASE IH

THE NEXT LEVEL

The most powerful Puma ever
– with up to 302 hp

+11 %
more powerful

When we designed our first Puma more than a decade ago, we had power and reliability in mind.

Today's farming requires more than that. Case IH has listened to and understood the needs of countless farmers and contractors – and prioritised what they need most: the latest on- and offboard telematics to enhance productivity, lower cost of ownership, a quieter, more premium operating experience and better uptime in the fields.

+18 %
footprint





+8 %
enlarged cab

+50 %
quieter

RANGE OVERVIEW	04 – 05
PACKAGES	06 – 07
PRECISION TECHNOLOGY	08 – 09
FIELDOPS.....	10 – 11
COMFORT & CUSTOMIZATION.....	12 – 15
VERSATILITY.....	16 – 17
PERFORMANCE & PRODUCTIVITY	18 – 21
SAFETY	22 – 23
ENDURANCE & AFTERWORK ROUTINE.....	24 – 27
SAFEGUARD CONNECT	28 – 29
SPECIFICATIONS	30 – 31

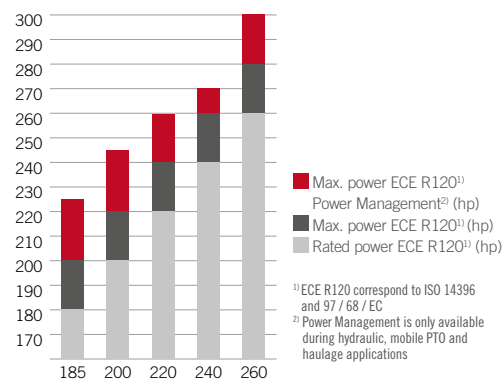
CASE IH

WHATEVER YOU CHOOSE, PERFORMANCE GOES UP

At Case IH, we understand that each farm has unique priorities. That's why we provide options to meet your specific needs, including two transmission types, a variety of tyre options and high-capacity axle choices. Whether you value versatility, performance, or tractive power, we have a Puma that can fit your needs.

ENGINE

FPT 6 / 6 cylinders / 6.700 m³



PUMA 185 - 200 - 220 - 240 MULTICONTROLLER



TRANSMISSION

PowerDrive 19x6 full powershift
40 kph ECO or 50 kph



GVW

up to 14,000 kg (with 4.5 front axle)



TYRES

Front: 600/65 R28
Rear: 650/65 R42



AXLES

- Suspended front axle with or without brakes
- Standard rear axle**





PUMA 185 - 200 CVXDRIVE



TRANSMISSION

CVXDrive 40 kph ECO
or 50 kph ECO



GVW

up to 14,400 kg



STANDARD TYRES

Front: 600/65 R28
Rear: 650/65 R42



AXLES

- Suspended front axle with or without brakes
- Optional suspended HD front axle with or without brakes
- Standard rear axle

PUMA 220 - 240 CVXDRIVE



TRANSMISSION

CVXDrive 40 kph ECO
or 50 kph ECO



GVW

up to 14,500 kg or 15,000* kg



STANDARD TYRES

Front: 600/65 R28
Rear: 650/65 R42



AXLES

- Suspended front axle with or without brakes
- Optional suspended HD front axle with or without brakes
- Standard rear axle or HD rear axle as option**

PUMA 260 CVXDRIVE



TRANSMISSION

CVXDrive 40 kph ECO
or 50 kph ECO



GVW

up to 15,000 kg



STANDARD TYRES

Front: 600/70 R30
Rear: 710/70 R42



AXLES

- Suspended HD front axle with or without brakes
- HD rear axle**

ONE STANDARD – TWO PACKAGES

The choice is yours

Your machine, your choice of comfort. Choose from Advanced and Professional editions to tailor your Puma to your needs.

The equipment packages can be changed by Case IH without prior notification. Please contact your local dealer for the latest configuration.

ADVANCED

ADVANCED FEATURES FOR DAILY OPERATIONS

- CVXDrive continuously variable transmission (40 kph Eco or 50 kph Eco options) or Full Powershift 18/19x6
- Electro-hydraulic remotes and powerful hydraulic pump
CVXDrive: 150 l/min or 170 l/min / Full Powershift: 120 l/min or 150 l/min
- 4 speed PTO (540/540E/1,000/1,000E)
- Electronic park lock is standard (optional on Full Powershift transmission)
- Air conditioning, passenger seat & cab suspension
- Front axle suspension is optional
- Intuitive PRO 1200 touchscreen monitor
- Optional advanced headland management (HMC II),
AccuGuide autoguidance and FieldOps telematics
- ISOBUS Class II or III optional



PROFESSIONAL

UNLOCK THE FULL POTENTIAL OF THE TRACTOR

- CVXDrive continuously variable transmission (40 kph Eco or 50 kph Eco options) or Full Powershift 18/19x6
- Electro-hydraulic remotes and powerful hydraulic pump
CVXDrive: 170 l/min is standard / Full Powershift: 150 l/min is standard
- 4 speed PTO (540/540E/1,000/1,000E)
- Electronic park lock is standard
- Air conditioning, passenger seat & cab suspension
- Front axle suspension is optional
- Intuitive PRO 1200 touchscreen monitor
- Advanced functionality Joystick is standard
- Optional advanced headland management (HMC II),
AccuGuide autoguidance and FieldOps telematics
- Power Beyond is optional
- ISOBUS Class II or III optional



THE NEXT LEVEL OF PROFITABILITY

Case IH Precision Technology systems revolutionised precision farming in 1995, allowing farmers to monitor the entire crop production cycle.

With Precision Technology solutions, farmers can increase profits through repeatable accuracy, lower operating costs and reduced overlaps.

A PRECISION SOLUTION FOR EVERY NEED

Case IH offers a number of precision farming signals with varying levels of accuracy, so that you can choose what's best for your operation.

RTK+

- Pass to pass: 1.5 cm
- Repeatable: 1.5 cm

AFS1

- Pass to pass: 15 cm



TRADITIONAL SINGLE BASE RTK NETWORK

Degraded signal



Blocked signal

CASE IH RTK+ NETWORK

RTK+ (Real Time Kinematic) is the top-end technology that ensures a fast, dependable signal and maximum accuracy in all conditions, regardless of field location.



PRECISE AND REPEATABLE AUTOMATED STEERING

AccuGuide is a highly accurate auto guidance system designed to maintain parallel swaths with precision down to 1.5 cm. Choose from various guidance patterns including field, circle, curved, heading, spiral and straight.

- Fewer “skips” and “overlaps” for more precise planting, fertilizing and tilling
- Less compaction for higher yields
- Faster field speeds to reduce your time on the job
- Reduced operator stress and fatigue



FULLY AUTOMATIC HANDS-FREE STEERING

Our **Case IH AccuTurn Pro** technology combines headland management and headland steering processes. Turning radius, speed, and implement control when turning on headlands are automated and optimised, resulting in increased efficiency and improved comfort.

- Automation optimises headland turns and field layouts
- Improves the repeatability and the overall efficiency
- Minimises operator error and reduces fatigue



AUTOMATIC HEADLAND TURNING

The **Headland Management Control II** system assists drivers when turning at the headland by allowing them to program each step by time or distance. It can also trigger other automated functions, such as lowering engine speed after lifting the implement.

- Automates workflows for less driver fatigue and higher productivity
- HMC II turns a repetitive manual task into an automated pinpoint process



CONNECT. VIEW. MANAGE.



The all-in-one FieldOps simplified platform for all your Case IH and multi-branded equipment.

Get access to real-time data and insights, including real-time monitoring, precise equipment location and duty status, estimated job completion time, and more.

Create a free account to access all features of Case IH FieldOps!



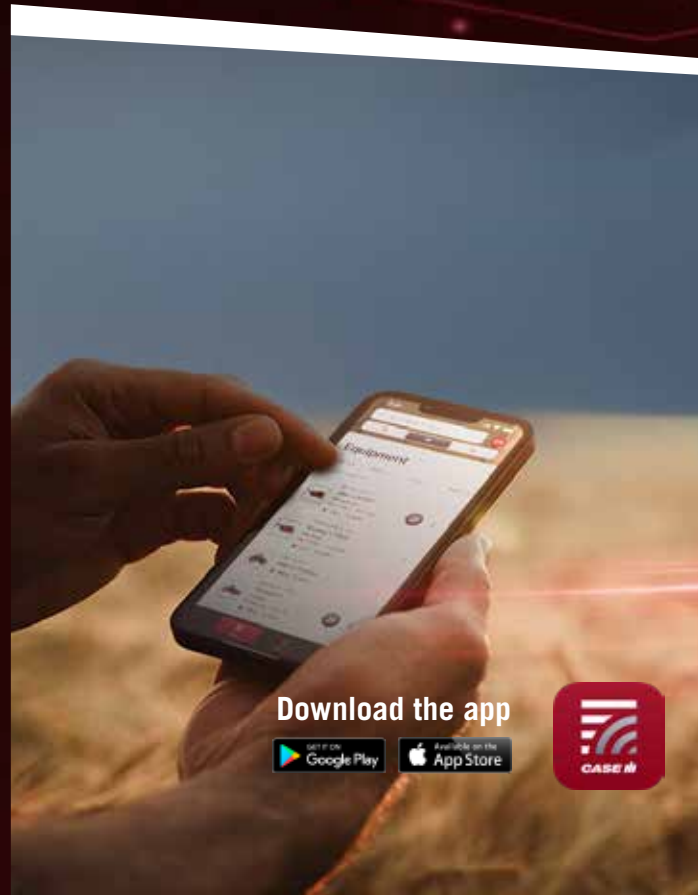
REAL-TIME MACHINE MONITORING

- Get precise equipment location and duty status.
- Monitor task completion and view 24-hour machine history.
- For a specific job, the robust performance data from FieldOps tells you how much area in the field is left and gives you an estimated time to completion.

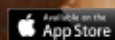


MACHINE PERFORMANCE TRACKING

- Improve your fleet's efficiency from anywhere.
- Monitor every detail of your fleet to make real-time decisions.
- Build your setup with your choice of over 50 real-time parameters, including:
 - telematics,
 - work status,
 - fuel and DEF consumption,
 - engine hours and more...



Download the app



DATA VISUALIZATION

- Quickly view the activities for a given field and choose which data layers to visualize.
- Turn agronomic data layers into prescriptions, run agronomic reports and create manual agronomic data layers.
- Set-up data integration between Case IH equipment and third-party systems which streamlines data collection and analysis, providing a holistic view of your farm operations.
- Easily find what you're looking for by toggling between tabs or using powerful search and quick filters.



SUPPORT & SERVICE REMOTELY

VIEW IN-CAB DISPLAY REMOTELY

No matter where they are, a farm manager or dealer can easily see exactly what the operator is seeing on the screen in the tractor cab.

REMOTE SERVICE SUPPORT

Work with your local Case IH dealer to remotely diagnose maintenance and service issues and identify the parts you need to stay up and running.

FIRMWARE OVER THE AIR (FOTA)

Your dealer can update your operating firmware wirelessly, giving you the advantage of new features, functionality and enhancements.



Launch a remote display session from your mobile phone and view monitor's screen to provide guidance to operators and offer near real-time adjustments from anywhere.



THE NEXT LEVEL OF COMFORT

Unmatched silence in the cab

Get ready for a premium 360-degree experience and a unique farming experience.

IT ALL STARTS FROM THE GROUND

The wider cab steps are fully integrated into the fuel tank design, taking the form of a real staircase for more comfort and safety to jump in/off.

+8 % ENLARGED CAB

The enlarged cab and larger frames enable more legroom as well as ample storage capacity, including a 20-litre cooled compartment under the passenger seat.

+11 % GLASS AREA

Enjoy an unobstructed view around you and of your implements.

+50 % QUIETER

With only 66 dB(A), the Puma is one of the quietest tractors on the market. Acoustics contributes to reduce stress and fatigue at the end of a long working day.

CUSTOMIZE YOUR RIDE COMFORT

Different cab suspensions are available to bring the comfort you need: mechanical, semi-active or the Advanced Vehicle Suspension system (more in page 22).

DETAILS THAT MAKE THE DIFFERENCE

- Automatic AC and heated with ideal 360° air repartition
- Electronically-telescoping mirrors that can be adjusted in-cab
- De-frosting electrical mirrors
- Multiple electrical outlets and USB charging points to keep your electronic devices charged
- Smartphone holder to always keep an eye on notifications
- Key fob for keyless operation and an engine start button
- Premium sound system





THE NEXT LEVEL OF CUSTOMISATION

Everything in control

The Case IH Pro 1200 monitor maximises control and automation in the cab. With just a few touches, operators can view and fine-tune most machine functions. Each driver can configure and save submenu and shortcut options to suit their needs.

PRO 1200 MONITOR

- 12" size
- Anti-fingerprint coating
- Bluetooth® pairing with mobile phone
- Ambient light sensor
- Multi-touch screen
- USB port

EXCLUSIVE ENCODER KNOB

The integrated encoder allows an easy navigation and an accurate monitoring under harsh field condition.



PERSONALISE YOUR WORKING SCREEN

Easily customise your run screens with seven nameable options, giving you the freedom to choose which information to display.



CUSTOMIZE YOUR EXPERIENCE

Choose from over 100 functions to assign to eight freely-programmable keys.



CONFIGURE AUXILIARY BUTTONS

Assign implement functions according to individual preferences or implement requirements thanks to AUX-N capability.



THE NEXT LEVEL OF VERSATILITY

The hydraulic layout of a tractor plays a crucial role in the daily routine of hitching and unhitching implements. With the latest ISOBUS standards and a variety of hitches and remote valves, Puma tractors facilitate the efficient use of large implements, easily and safely.

PULL ANY IMPLEMENT YOU NEED

The Puma series is equipped with a wide slider with choice of different hitch inserts to meet any needs like [\[market to give 2 examples of most sold locally\]](#). Drawbar can be specified either in cat. II, cat. III or with the HD K80 ball-type hitch extension.

QUICK AND EASY HITCHING/SWITCHING

The new design of pressure-release couplers makes the daily work of attaching and removing implements even faster and more comfortable. Colour-coded inlet and outlet sides prevent errors in attaching the implements.

CONFIGURABLE CONTROL SWITCHES

Use the high definition Pro 1200 monitor to assign four remote valves to hot keys on the Multicontroller, or to the electrical joystick. The backlit toggle switches change colour depending on which remote valve has been assigned to them.



SHORTCUT KEYS BRING YOU DIRECTLY TO THE SETTINGS MENU TO CONFIGURE YOUR REMOTE VALVES.



SUCCESS UNDER PRESSURE

A Power Beyond connection is available for implements with a load sensing controller. The machine is also provided with an unpressurised return line.

ISOBUS CLASS III – AEF CERTIFIED

ISOBUS allows compatibility and connectivity between displays, tractors, and implements, regardless of brand. The plug-and-play capability ensures greater flexibility for your mixed fleet.

HIGHER PRODUCTIVITY WITH TIM

The new AEF TIM (Tractor Implement Management) module allows the implement to automatically manage certain tractor functions and operating parameters (ground speed, lift, PTO...). This enhances the quality, efficiency, and driver experience of the entire process, resulting in increased productivity and easier operation for users.



ISOBUS ALLOWS TO SET UP AND VISUALIZE DATA FROM MULTIPLE EQUIPMENT DIRECTLY FROM THE PRO 1200.



THE NEXT LEVEL OF PERFORMANCE



Strength without compromise

Our engineers have achieved what you wished for: power, compact design, low cost of ownership, performance under tough conditions, and environmental compatibility.

THE MOST POWERFUL PUMA EVER

The Puma boasts a 6.7 L NEF engine with HI-eSCR2 tech for Stage V compliance. The flagship Puma 260 CVXDrive delivers 302 hp and impressive fuel efficiency.

IMPRESSIVE POWER BOOST

All models benefit from an innovative power management system that provides up to 30 hp extra power when transporting heavy loads or moving at higher speeds.

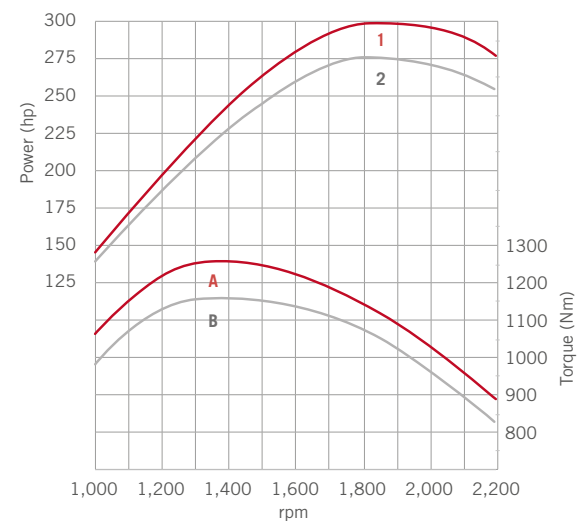
ADVANCED ENGINE CHARACTERISTICS

The electronically controlled Variable Geometry Turbocharger (eVGT) system ensures optimal combustion, resulting in improved torque and fuel efficiency. This, combined with a superior torque rise of 46 % and a wide constant performance range, makes even the most challenging situations easy to handle.

ENVIRONMENTALLY FRIENDLY

Hydro-treated vegetable oil, or HVO, is a biosynthetic diesel that is fully compatible with the Stage V FPT engine. Combined with extended service intervals and biodegradable transmission oil, HVO compatibility cements the Puma's eco-credentials.

PUMA 260 CVXDRIVE



Curves 1 and A with Power Management
Curves 2 and B without Power Management

CVXDRIVE TRANSMISSION

For those who demand maximum versatility

PUMA 185 - 200 - 220 - 240 - 260

MORE EFFICIENCY

The APM system automatically selects the most suitable engine speed and gearbox ratio combination to perform the task at hand, at the same time optimising fuel consumption and power efficiency.

Added to that, the Case IH double-clutch technology results in less torque interruption, making this transmission more suited for power-hungry tasks where momentum is important.

PRODUCTIVITY

Uninterrupted power to the ground delivers the exact speed for any operation with full flexibility during transport.

EASY-TO-USE

Stepless operations concept with automatic range change: ideal for inexperienced or seasonal operators.

SETTINGS ON THE GO

You can easily customize your transmission settings directly from the Pro 1200 monitor

- Acceleration / deceleration
- Shuttling speed
- Drive pedal behaviour
- Overdrive / Speed control



POWERDRIVE TRANSMISSION

Efficient power for your traction activities

PUMA 185 - 200 - 220 - 240

SMOOTH RIDE

Shifting through all gears without torque interruption allows up to 20 % faster acceleration with each gear change.

OPERATOR COMFORT

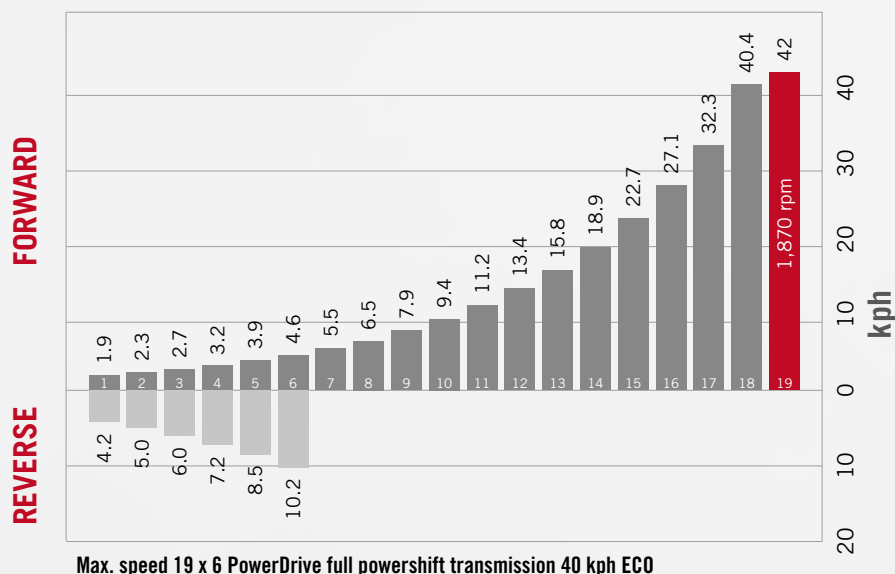
Right hand power shuttle or dedicated buttons on the Multicontroller allow direction changes without releasing the steering wheel.

FOR SENSITIVE TASKS

The optimal number of gears are available with no clutching or torque interruption in the crucial 2.5 kph to 14 kph working range.

PowerDrive is available in:

- 40 kph ECO @ 1,870 engine rpm
- 50 kph @ 2,200 engine rpm





THE NEXT LEVEL OF PRODUCTIVITY

Every detail carefully designed

Transmitting power efficiently is the key to tractor performance. Puma tractors feature larger axles to transfer more power, bigger tyres for greater traction and high hydraulic capacities to handle the heaviest implements.

**15 t
GVW**

An engine side frame and bigger axles allow a gross vehicle weight of 15 t, ideal for handling the heaviest attachments and improving draft performance.

**170 l/min
FLOW RATE**

Puma tractors are fitted with high performance hydraulic pumps with flowrates of up to 170 l/min to run with the heaviest implements.



+18 % FOOTPRINT

The latest VF technology with 2.05 m rear tyres makes sure the Puma (only CVXDrive models) converts more tractive power into draft work without compacting the soil.

LIFTING CAPACITY

10,400 KG REAR LIFT CAPACITY

Easy to switch between Cat. II and Cat. III

6,000 KG FRONT LIFT CAPACITY

Choice of stabilizers (telescopic, automatic and hydraulic)

1,000 RPM FRONT PTO

The 1,000 rpm speed allows maximum productivity to be maintained in dense forage. Combined with the reversible eco-fan, you ensure full productivity.

4 REAR PTO SPEEDS

4 speeds are offered as standard for maximum versatility. The 540E and 1,000E are reached at less than 1,600 rpm for improved fuel efficiency.

THE NEXT LEVEL OF STABILITY

To protect what matters most

UNIQUE ADVANCED VEHICLE SUSPENSION (AVS)

Thanks to the clever suspension software, the tractor's front axle, semi-active cab suspension and rear linkage react instantly to changes in terrain. This system reduces operator fatigue on longer working days and, importantly, protects the vehicle and implement.

SAFE AND STRESS-FREE WORK

Active hold control is always a standard feature. It automatically prevents the tractor from rolling on slopes, without needing to activate brakes or clutch. To continue forward, simply push the Multicontroller forward.



SYNCHRONIZED
REAR HITCH DAMPING

SYNCHRONIZED
CAB DAMPING

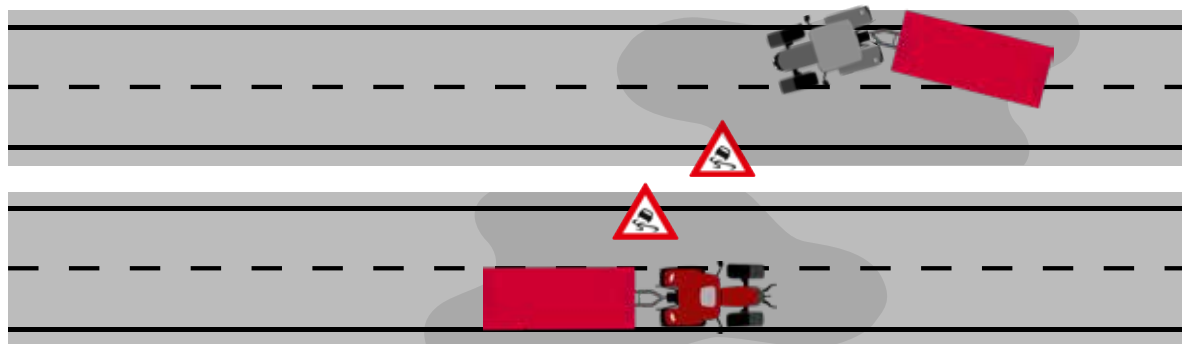
SYNCHRONIZED
FRONT AXLE DAMPING



WATCH THE
ADVANCED VEHICLE
SUSPENSION
VIDEO HERE!



WITHOUT ADVANCED TRAILER BRAKE SYSTEM



WITH ADVANCED TRAILER BRAKE SYSTEM

FEEL SECURE WITH YOUR HEAVY TRAILED EQUIPMENT

The Advanced Trailer Brake enhances safety, as the patented system actively recognises driving situations and changes to the load on the flywheel – followed by stabilising the tractor through pulsed activation of pneumatic trailer brakes. When decelerating either by pulling back the Multicontroller or using the brake pedal, the system keeps the combination stable and in line.

24-HOUR WORKING LIGHTING POWER

The 24-LED light package delivers a 360° illumination area with a specific long-range lights so that you can work in perfect safety with a wide implement even at night. Two configurable memories can have any lights assigned to them to quickly switch light patterns, from left to right for example.

FOLLOW ME HOME

Enter or exit the cab safe in dark conditions with this function which allows several lights (configurable in the monitor) to stay on after key-off.



**THE ICONS ON ALL SWITCHES ARE BACKLIT
WHEN THE HEADLIGHTS ARE ON.**

THE NEXT LEVEL OF ENDURANCE

Keep performance up no matter what

We know that time is critical in this business. We have designed the Puma series tractors with longer run-to-fill time features and quick daily maintenance to reduce your costs and machine downtimes.

UP TO 3 EXTRA WORKING HOURS

The bigger fuel tank of 460 l (395 l previously) and the 54 l AdBlue capacity means longer intervals between refuelling. This allows Puma to work longer without stopping up to 3 hours longer depending on the workload.

- Time and labour savings for the farm fuel truck
- Easier to plan supporting tractors in the field

50 % LONGER SERVICE INTERVALS THAN THE COMPETITION

The patented HI-eSCR2 system boasts industry-leading service intervals of 750 hours, letting you operate your machinery longer. The maintenance-free solution eliminates the need for SCR component cleaning or filter replacement during the system's entire lifecycle.

- 750 hours for the main service interval
- 1,500 hours for the transmission

COST-EFFECTIVE ROUTINE MAINTENANCE

When you run a Puma, daily checks and regular maintenance are easy and quick, getting you in the field faster and home sooner.

- Ground-level fluid checks
- Battery compartment close at hand with including jump start connector
- Convenient access to filters
- Easy access to the right-hand side of the cab with ladder and platform

STAY COOL TO SAVE FUEL AND TIME

The Puma comes equipped with an adjustable fan that can reverse air flow to clean the cooling unit. Optimal engine cooling enables significant fuel savings as well as contributing to extend the life of your machine.





THE NEXT LEVEL OF AFTERWORK ROUTINE

Smart ideas to simplify your life

We at Case IH strive to innovate and provide solutions that enhance your productivity. The Puma is designed with smart features that streamline your workload and offer long-term cost savings.

EXCLUSIVE INTEGRATED AND LOCKABLE TOOLBOX

Located beside the cab steps, the fuel tank is designed to accommodate the storage of a large toolbox on rails for easy and safe handling

- Store essentials for on-the-go adjustments without leaving the field
- Located at ground level for easy access
- Lockable with a key for peace of mind
- Keep your cab clean and tidy

EXCLUSIVE HAND-WASHING WATER TANK

Provided right below the toolbox is a 5-litre water tank which can easily be removed for refills.

- Wash your hands wherever you are and keep your cab clean

SECONDARY OUTSIDE LOCKABLE STORAGE

You can store even more tools or accessories in a built-in upper storage area, which is also lockable. Easy to access and with enough space for items such as a grease pump or the coupling ball joints to keep your cab tidy.

EASY CLEANING ROUTINE

Two compressed air nozzles, one right below the cab door and one at the back next to the hydraulic outlets allow easy 360° cleaning of the tractor and your implements without struggling with the hose.



SAFE*GUARD* WARRANTY

PROTECTED FOR 3 YEARS

Extend your warranty for two more years: SAFEGUARD WARRANTY allows you to protect your investment from exposure to risk of unexpected repair cost. Harvest with peace of mind, keep operating cost under control and, at same time, increase machine resale value.

**INCREASED
RESALE VALUE**

OPERATOR *TRAINING*

KNOWLEDGE IS POWER

Unleash the full potential of your machine: Reach maximum performance and avoid an improper use of your new Case IH machine. Our professional training for operators delivered by your Case IH Dealer focuses on the new functionalities of your machine.

**INCREASE
OPERATOR
SAFETY AND
PERFORMANCE**

PRE-SEASON *CHECK*

PEACE OF MIND FOR 3 YEARS

The Case IH dealer technicians offer a Pre-Season Check to keep your machines in good shape and prevent downtime. The inspection covers over 100 checkpoints, and the technician will suggest ways to optimize machine performance based on the history report data.

**MAXIMIZE
MACHINE USE,
PREVENT
DOWNTIME**

SAFE*GUARD*

PROTECT YOUR INVESTMENT,



CONNECT

ENHANCE YOUR PRODUCTIVITY

Increase uptime and keep your costs to an absolute minimum

This Case IH service package includes the professional services you need to help you reach the full potential of your Case IH machine.

**FASTER
REPAIR, LESS
DOWNTIME**

MAXSERVICE

3 YEARS OF ALL AROUND SUPPORT

Reduce downtime to a minimum: Get support around the clock in your busiest season and in close partnership with the dealer network. Take advantage of priority shipment of needed parts (24/7), in-field support by Case IH technicians and courtesy units wherever possible.

**INCREASED
PRODUCTIVITY
PER HA**

FieldOps

Use precision farming data and manage your fleet: FieldOps™ provides you with information about recent operations and lets you monitor machine status. Adapt in-field precision farming AB lines at any time so that all machines will follow the same lines every season.

**INCREASED
PRODUCTIVITY,
FASTER
REPAIR**

CONNECTROOM

CONNECT ROOM: YOUR PIT CREW

Connect Room continuously monitors machines, proactively identifies potential issues, and alerts dealers for quick help, maximising productivity and minimising downtime.

MODELS	PUMA 185 MULTICONTROLLER	PUMA 200 MULTICONTROLLER	PUMA 220 MULTICONTROLLER	PUMA 240 MULTICONTROLLER
ENGINE				
Number of cylinders / Capacity [cm ³]	6 / 6,700			
Type / Emission level	Common Rail Diesel engine, turbocharger and HI-eSCR2 only exhaust after treatment / Stage V			
Rated power ECE R120 ¹⁾ [kW/hp(CV)]	132 / 180	147 / 200	162 / 220	177 / 240
... at engine speed [rpm]	2,200	2,200	2,200	2,200
Maximum power ECE R120 ¹⁾ [kW/hp(CV)]	147 / 200	162 / 220	176 / 239	191 / 260
... at engine speed [rpm]	1,800	1,800	1,800	1,800
Maximum power ECE R120 ¹⁾ Power Management ²⁾ [kW/hp(CV)]	165 / 224	180 / 245	191 / 260	199 / 271
... at engine speed [rpm]	1,800	1,800	1,800	1,800
Maximum torque [Nm @ 1,500 rpm]	942	1,038	1,101	1,159
Torque rise [%]	44	45	44	40
Fuel tank capacity, diesel / urea [litres]	470 / 54			
TRANSMISSION				
CVXDrive continuously variable transmission 50 kph or 40 kph ECO	–			
PowerDrive 19x6 full powershift 40 kph ECO @ reduced rpm	○			
PowerDrive 19x6 full powershift 50 kph	○			
Powershuttle	●			
Creeper	○			
Rear axle diff-lock type	Multi disc wet plate with management system			
Service brake	Hydraulically operated multiple wet disc brake, self adjusting			
POWER TAKE OFF				
Type	Shiftable with progressive electro-hydraulic engagement. Auto-PTO optional			
4 speeds	540 / 540E / 1,000 / 1,000E			
... at engine speeds [rpm]	1,931 / 1,598 / 1,912 / 1,583			
Shaft type Standard (Option)	1 3/8" 21 splines or 1 3/8" 6 splines			
FRONT PTO AND FRONT HITCH				
Front PTO 1,000 speed @ engine rpm	1,886			
Front hitch max. lift capacity [kg]	5,812			
FOUR-WHEEL DRIVE AND STEERING (DRIVELINE)				
Type	Electro-hydraulic with management system, differential lock as standard			
Active front axle suspension	○			
Min. turning radius ³⁾ track setting 1,829 mm [m]	5.9			
HYDRAULIC SYSTEM				
System type	Variable displacement, pressure flow compensated pump			
Max. pump flow rate Standard (Option) / System pressure	120 l/min (150 l/min) / 210 bar			
Control type	Electronic Hitch Control (EHC) with cushion ride control			
Max. lift capacity [kg]	10,464			
OECD lift capacity through range @ 610 mm [kg]	7,280			
Max. number of rear remote valves	5 electrical			
Max. number of mid mount valves with electronic joystick	3 electrical			
Remote valve timer control	1 - 60 seconds on all models			
Category type	Cat II-III quick adjust			
Slip control	●			

PUMA 185 CVXDRIVE	PUMA 200 CVXDRIVE	PUMA 220 CVXDRIVE	PUMA 240 CVXDRIVE	PUMA 260 CVXDRIVE
6 / 6,700				
Common Rail Diesel engine, turbocharger and HI-eSCR2 only exhaust after treatment / Stage V				
132 / 180	147 / 200	162 / 220	177 / 240	191 / 260
2,200	2,200	2,200	2,200	2,200
147 / 200	162 / 220	176 / 239	191 / 260	205 / 281
1,800	1,800	1,800	1,800	1,800
165 / 224	180 / 245	191 / 260	199 / 271	222 / 302
1,800	1,800	1,800	1,800	1,800
942	1,038	1,101	1,159	1249
44	45	44	40	39
470 / 54				
●				
–				
–				
●				
–				
Multi disc wet plate with management system				
Hydraulically operated multiple wet disc brake, self adjusting				
Shiftable with progressive electro-hydraulic engagement. Auto-PTO optional				
540 / 540E / 1,000 / 1,000E				
1,931 / 1,598 / 1,912 / 1,583				
1 3/8" 21 splines or 1 3/8" 6 splines				
1,886				
5,812				
Electro-hydraulic with management system, differential lock as standard				
○				
5.9				
Variable displacement, pressure flow compensated pump				
150 l/min (170 l/min) / 210 bar				
Electronic Hitch Control (EHC) with cushion ride control				
10,464				
7,280				
5 electrical				
3 electrical				
1 – 60 seconds on all models				
Cat II-III quick adjust				
●				●

MODELS	PUMA 185 MULTICONTROLLER	PUMA 200 MULTICONTROLLER	PUMA 220 MULTICONTROLLER	PUMA 240 MULTICONTROLLER
STANDARD TYRES ⁴⁾				
Standard front tyre size		600/65 R28		
Standard rear tyre size		650/65 R42		
Maximum rear tyre size		Group 47		
WEIGHT / DIMENSIONS ³⁾				
Approximate shipping weight standard / suspended front axle [kg] ³⁾		8,625 / 9,550		
Maximum permissible total weight [kg]		14,000		
A: Max. length with front and rear lower links downstandard / suspended front axle [mm]		5,398 / 5,517		
B: Total height [mm]		3,314		
C: Minimum width across rear fenders (narrow / wide type fender) [mm]		2,550 / 2,750		
D: Wheel base standard / suspended front axle [mm]		2,884 / 2,884		
E: Height at centre of rear axle, highest point cab [mm]		2,339		
F: Track setting front / rear [mm]		1,560-2,258 / 1,530-2,240		

● Standard Equipment ○ Optional Equipment — Not available

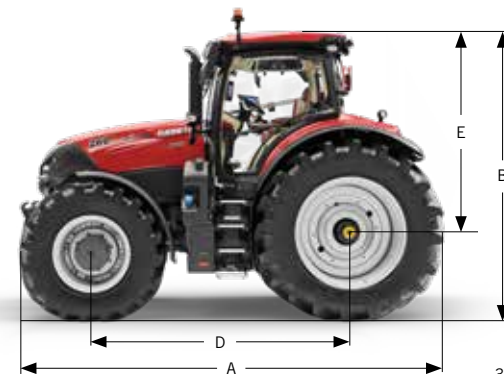
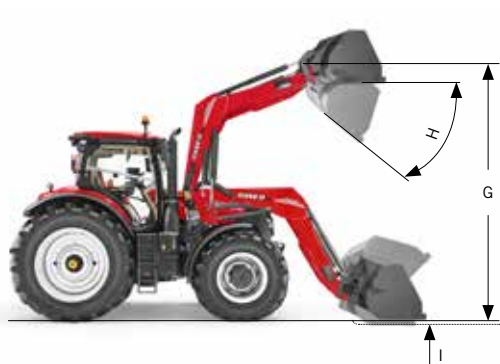
¹⁾ ECE R120 correspond to ISO 14396 and 97 / 68 / EC ²⁾ Power Management is only available during hydraulic, mobile PTO and haulage applications

³⁾ With standard tyres ⁴⁾ Other tyres on request ⁵⁾ Weight can vary according to tractor configuration

PUMA 185 CVXDRIVE	PUMA 200 CVXDRIVE	PUMA 220 CVXDRIVE	PUMA 240 CVXDRIVE	PUMA 260 CVXDRIVE
	600/65 R28			600/70 R30
	650/65 R42			710/70 R42
Group 48				
		8,625 / 9,550		
14,400			15,000	
		5,467 / 5,467		
3,314			3,367	
		2,550 / 2,750		
		2,884 / 2,884		
		2,339		
		1,544-2,276 / 1,530-2,240		

COMPATIBLE FRONT LOADER	L4727T
Self-levelling type	Hydraulic self-levelling
Loader working pressure [bar]	210
LIFT HEIGHT / WORKING ANGLE / DIGGING DEPTH	
G: Maximum lift height at implement pivot pin ¹⁾ [mm]	4,680
H: Maximum dumped angle ¹⁾ [°]	55
I: Digging depth ¹⁾ [°]	172
LIFTING CAPACITY	
Lift capacity to maximum height - at load gravity center ¹⁾ [kg]	2,626
Lift capacity to 1.5 m height - at load gravity center ¹⁾ [kg]	3,424
Breakout force at load gravity center ¹⁾ [kg]	3,582
Bucket rollback force at maximum height ¹⁾ [kg]	3,083
Bucket rollback force at ground level ¹⁾ [kg]	3,147

¹⁾ According to ASABE S301.5





f y in @
caseih.com



Subscribe now
for exclusive
offers & updates



Free phone: 00 800 22 73 44 00

Safety never hurts! Always read the Operator's Manual before working with any equipment. Inspect equipment before using it, and be sure it is operating properly. Follow the product safety signs, and use any safety features provided. This literature has been published for worldwide circulation. The standard and optional equipment and the availability of individual models may vary from one country to the next. Case IH reserves the right to undertake modifications without prior notice to the design and technical equipment at all times without this resulting in any obligation whatsoever to make such modifications to units already sold. Whilst every effort is made to ensure that the specifications, descriptions and illustrations in this brochure are correct at the time of going to press, these are also subject to change without prior notice. Illustrations may show optional equipment or may not show all standard equipment. Case IH recommends **AKCELA** lubricants.

TP01 / SM / 10.24 / Printed in Austria - Cod.No. 24C0005COMINB

CASE IH