



**CASE**  
CONSTRUCTION

# HYDRAULIC EXCAVATORS



CX300C | CX350C | CX470C | CX470C MASS EXCAVATION

# MAIN REASONS TO CHOOSE THE C-SERIES

## HIGH VERSATILITY

- Standard Flow Regulation;
- Up to 10 attachments settings can be memorised;
- Optional Clamshell circuit;
- MULTI-FITS (safe, automatic and universal).

## HIGH RELIABILITY

- New HD boom and arm design: more robust and reinforced to optimise durability and performance;
- Re-designed attachment for more durability: less maintenance cost, higher resale value.

With the CASE top manufacturing quality.

## HIGH PRECISION AND CONTROLLABILITY

- Advanced Hydraulic System;
- Unique pump torque control system;
- Advanced energy management with innovative fuel saving functions;
- 3 available power modes to match customers needs.



## MAXIMUM COMFORT

Estra large cab: 7% more space vs previous model.

Low noise and vibrations.

Ergonomic workstation.

Real time parameters monitoring.

Fully adjustable seat/joysticks and brand new LCD cluster.

## SAFETY FIRST

- A full range of optional front guards;

- Superior visibility;

- Standard Rear view camera.

With Standard Rops cab and Fops, level II certified.

## HIGH EFFICIENCY

A combination of engine technology and Advanced Hydraulic System grants 10% of fuel economy. With the 5 Energy Saving Controls, Isuzu Tier IV Interim engine and the new ECO gauge function.

## LOW TOTAL COST OF OWNERSHIP AND REPAIR COST

- Cab filters access form
- Standard EMS (Easy Maintenance System) bushings
- Long maintenance intervals
- Low effort for serviceability
- Good service access, onboard diagnosis



# C-SERIES

## HYDRAULIC EXCAVATORS

### POWERFUL AND FUEL EFFICIENT ENGINE

The C-Series Hydraulic Excavators are powered by Tier 4 Interim - certified Isuzu Engine with double to multi CEGR (cooled exhaust gas recirculation) and one-piece diesel particle difusor (DPD) that burns cleaner while delivering superior horsepower.

The combination of engine technology and Advanced Hydraulic System grants **10% of fuel economy**.

Automatic self-regeneration of the diesel particulate diffusor (DPD) ensures no loss of productivity, while low engine rpm, improved hydraulic pump control and five new energy saving systems boost fuel economy up by 10%.

A green economy gauge can be activated in the cab to inform the operator of the most economical settings for the machine, reporting fuel consumption in real-time.



### ADVANCED ENERGY MANAGEMENT

- **POWER SAVE:** the pump discharge pressure when the machine is at rest.
- **PUMP TORQUE CONTROL:** prevents drop in engine rpm when lifting heavy loads.

Less fuel consumption and effective energy usage thanks to the **5 ENERGY SAVING FUNCTIONS:**

- **BEC - Boom Economy Control:** it increases the fuel efficiency during the lowering of the boom and swing operations;
- **AEC - Automatic Economy Control:** it reduces the rpm when the joysticks are in neutral position;
- **SRC - Swing Relief Control:** the pump sends a small amount of oil at the very beginning of the slewing operations;
- **SSC - Spool Stroke Control:** automatic speed adjustment during digging and leveling;
- **AES - Auto Energy Safe:** Auto Idle and Idle Shut Down.





## HIGH RELIABILITY

### Improved design for durable performances

The new boom and arm are Heavy Duty, more robust and reinforced in the more stressed areas, optimising the durability and the performances at the same time: the boom is average 8% lighter than the previous series.

HD booms and arms are standard, to grant the maximum reliability also in the toughest applications.

**Increased productivity:** extra lifting capacity thanks to the front attachment optimisation;

**Maximum efficiency:** lighter, but stronger front attachment (more lifting, less fuel consumption);

**Higher resale value:** re-designed attachment for more durability and less maintenance cost.



## ROBUSTNESS

The C-Series Hydraulic Excavators undercarriage is made with high quality components, with thick structural plates in the areas where components required and higher level of resistance.

### Heavy duty solutions

The Heavy duty undercarriage ensures safe and productive performance in all terrains.

- X-chassis design to grant a better weight distribution and a superior stability;
- Heavy duty and high quality material;
- Heavy duty travel engine protection;
- Extra heavy duty carrier roller brackets.

# C-SERIES

## HYDRAULIC EXCAVATORS

### COMFORT AND SAFETY

- Superior wide and roomy cab with ample legroom.
- New cushioning system to lower noise and vibration levels for the operator's ultimate comfort.
- Totally adjustable workstation with fully reclinable air –suspended seat.
- Air conditioning system with 25% more airflow and 6% better performances.



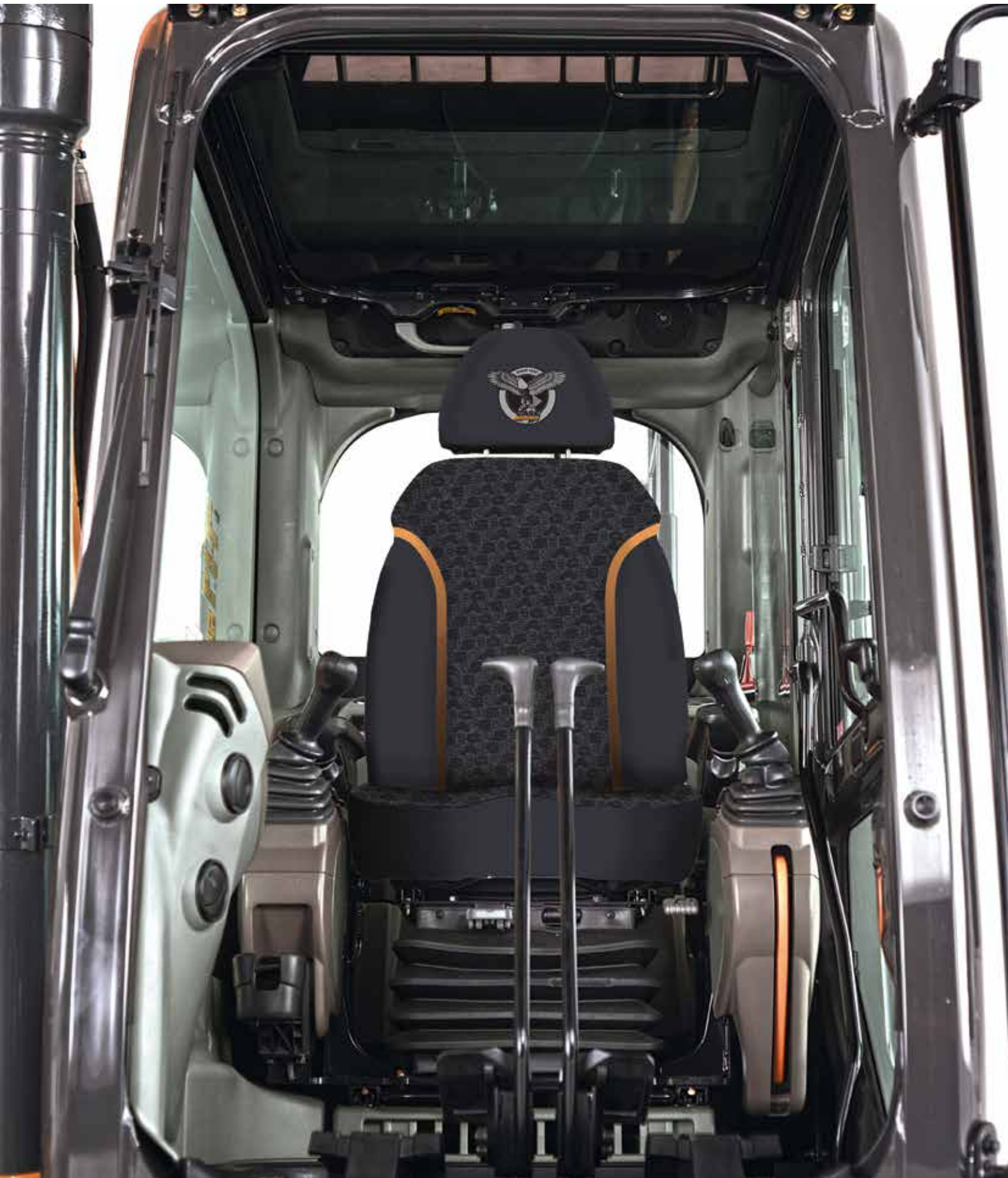
### OUTSTANDING VISIBILITY

- Wider glazed surface with single piece side window.
- New 7" LCD cluster for a more secure and safe working environment and to constant monitor the main machine parameters.



# COMFORT RULES

## FIRST CLASS CAB AND SEAT









# C-SERIES

## HYDRAULIC EXCAVATORS

### CX300C

#### ENGINE

Model \_\_\_\_\_ ISUZU GH-6HK1X  
 Type \_\_\_\_\_ Water-cooled,  
 4-cycle diesel, 6-cylinder in line, electronically controlled, high pressure common rail  
 system, variable geometry turbocharger, air cooled intercooler, triple exhaust gas  
 recirculation, DPD system with auto-regeneration.  
 Emission certified \_\_\_\_\_ Tier IV Interim  
 Displacement \_\_\_\_\_ 7,79 l  
 Bore/stroke \_\_\_\_\_ 115 mm x 125 mm  
 Horsepower SAE J1349 (net) \_\_\_\_\_ 154 kW / 207 hp at 1800 min<sup>-1</sup>  
 Maximum torque SAE J1349 (net) \_\_\_\_\_ 909 Nm at 1500 min<sup>-1</sup>

#### HYDRAULIC SYSTEM

Type \_\_\_\_\_ 2 variable displacement axial piston pumps with  
 regulating system  
 Max. oil flow \_\_\_\_\_ 2 x 243 liter/min at 1800 min<sup>-1</sup>  
 Working circuit pressure \_\_\_\_\_  
 Boom/Arm/Bucket circuit \_\_\_\_\_ 34.3 MPa  
 Boom/Arm/Bucket circuit (with Power Boost) \_\_\_\_\_ 37.3 MPa  
 Swing circuit \_\_\_\_\_ 29.4 MPa  
 Travel circuit \_\_\_\_\_ 34.3 MPa

#### SWING

Maximum swing speed \_\_\_\_\_ 10,0 min<sup>-1</sup>  
 Swing torque \_\_\_\_\_ 92,100 Nm

#### FILTERS

Suction filter \_\_\_\_\_ 105 µm  
 Return filter \_\_\_\_\_ 6 µm  
 Pilot line filter \_\_\_\_\_ 8 µm

#### WEIGHT AND GROUND PRESSURE

With 3.18 m arm, 1.1 m<sup>3</sup> bucket, 600 mm grouser shoes, operator, lubricant, coolant and full fuel tank, top guard OPG level 2.

CX300C	WEIGHT	GROUND PRESSURE
600 mm grouser shoe	29.900 Kg	0.058 Mpa

#### TRAVEL

Travel motor \_\_\_\_\_ Variable displacement axial piston motor (Automatic travel  
 speed shifting)  
 Max travel speed \_\_\_\_\_ 5.4 km/h  
 Low travel speed \_\_\_\_\_ 3.2 km/h  
 Gradeability \_\_\_\_\_ 70% (35°)  
 Drawbar pull \_\_\_\_\_ 233 kN

#### ELECTRICAL SYSTEM

Voltage \_\_\_\_\_ 24 V  
 Alternator \_\_\_\_\_ 50 Amp  
 Starter motor \_\_\_\_\_ 5.0 kW  
 Battery \_\_\_\_\_ 2X12V 128 Ah/5 HR

#### UNDERCARRIAGE

Number of carriers rollers (each side) \_\_\_\_\_ 2  
 Number of track rollers (each side) \_\_\_\_\_ 9  
 Number of shoes (each side) \_\_\_\_\_ 50  
 Type of shoe \_\_\_\_\_ Triple grouser shoe

#### CAPACITIES

Fuel tank \_\_\_\_\_ 450  
 Hydraulic system \_\_\_\_\_ 300  
 Cooling system \_\_\_\_\_ 30.8 l  
 Engine Crank Case \_\_\_\_\_ 39 l

# SPECIFICATIONS

## CX350C

### ENGINE

Model \_\_\_\_\_ ISUZU AL-6HK1X  
Type \_\_\_\_\_ Water-cooled, 4-cycle diesel, 6-cylinder in line,  
Electronically controlled, high pressure common rail system, variable  
geometry turbocharger, air cooled intercooler, triple exhaust gas recirculation,  
DPD system with auto-regeneration.  
Emission certified \_\_\_\_\_ Tier IV Interim  
Displacement \_\_\_\_\_ 7.79 l  
Bore/Stroke \_\_\_\_\_ 115 x 125 mm  
Horsepower SAE J1349 (net) \_\_\_\_\_ 198 kw @ 1900 min<sup>-1</sup>  
Maximum torque SAE J1349 (net) \_\_\_\_\_ 1043 Nm @ 1500 min<sup>-1</sup>

### HYDRAULIC SYSTEM

Type \_\_\_\_ 2 variable displacement axial piston pumps with regulating system  
Max oil flow \_\_\_\_\_ 2 x 285 l/min @ 1900 min<sup>-1</sup>  
Boom/Arm/Bucket circuit \_\_\_\_\_ 34.3 MPa  
Boom/Arm/Bucket circuit (With Power Boost) \_\_\_\_\_ 37.3 MPa  
Swing circuit \_\_\_\_\_ 30.4 MPa  
Travel circuit \_\_\_\_\_ 34.3 Mpa

### SWING

Swing torque \_\_\_\_\_ 112,000 Nm  
Max swing speed \_\_\_\_\_ 9.7 min<sup>-1</sup>

### TRAVEL

Travel motor \_\_\_\_ Variable displacement axial piston motor (automatic travel  
speed shifting)  
Max travel speed \_\_\_\_\_ 5.4 km/h  
Low travel speed \_\_\_\_\_ 3.2 km/h  
Gradeability \_\_\_\_\_ 70% (35°)  
Drawbar pull \_\_\_\_\_ 263 kN

### WEIGHT AND GROUND PRESSURE

With 3.25 m arm, 1.4 m<sup>3</sup> bucket, operator, lubricant, coolant, full fuel tank and top guard OPG level 2

CX350C LC	WEIGHT	GROUND PRESSURE
600 mm grouser shoe	36.400 Kg	0.068 Mpa

### FILTERS

Suction filter \_\_\_\_\_ 105 µm  
Return filter \_\_\_\_\_ 6 µm  
Pilot line filter \_\_\_\_\_ 8 µm

### ELECTRICAL SYSTEM

Circuit \_\_\_\_\_ 24V  
Alternator \_\_\_\_\_ 50 Amp  
Starter motor \_\_\_\_\_ 5.0 kW  
Battery \_\_\_\_\_ 2x12 128 Ah/5 HR

### UNDERCARRIAGE

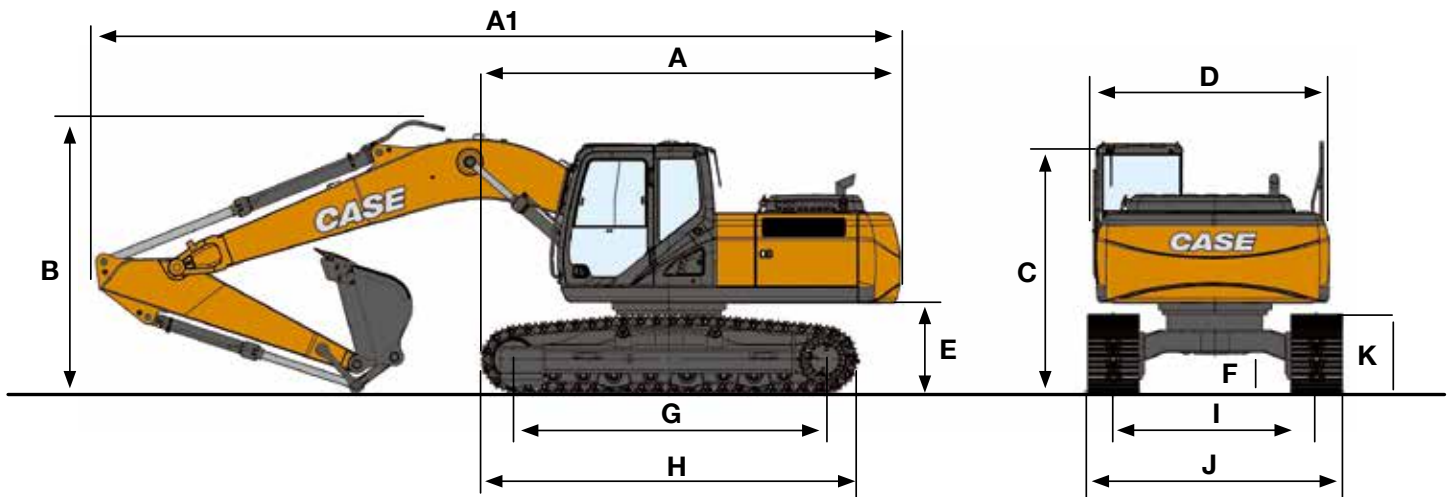
Number of carriers rollers (each side) \_\_\_\_\_ 2  
Number of track rollers (each side) \_\_\_\_\_ 8  
Number of shoes (each side) \_\_\_\_\_ 48  
Type of shoe \_\_\_\_\_ Triple grouser shoe

### CAPACITIES

Fuel tank \_\_\_\_\_ 580 l  
Hydraulic system \_\_\_\_\_ 350 l  
Cooling system \_\_\_\_\_ 35.4 l  
Engine Crank Case \_\_\_\_\_ 49 l

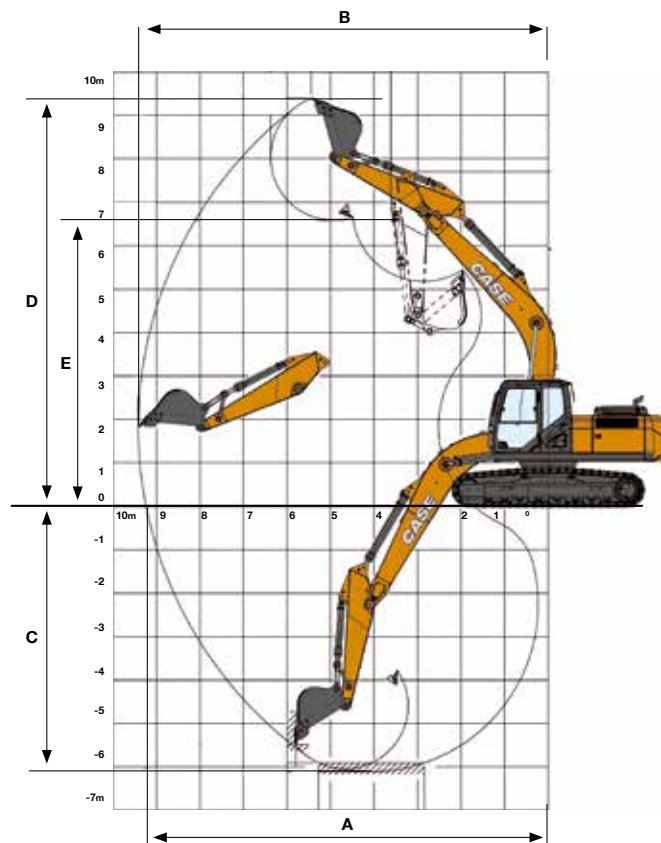
# C-SERIES

## HYDRAULIC EXCAVATORS



### GENERAL DIMENSIONS

		CX300C Arm 3.18m	CX350C Arm 3.25 m
A	Overall length (without attachment)	mm	5580
A1	Overall length (with attachment)	mm	10450
B	Overall height (with attachment)	mm	3260
C	Cab height	mm	3210
D	Upper structure overall width	mm	2890
	Swing (rear end radius)	mm	3160
E	Clearance height under upper structure	mm	1180
F	Minimum ground clearance	mm	470
G	Wheel base (Center to center of wheels)	mm	3980
H	Crawler overall length	mm	4850
K	Crawler tracks height	mm	1040
I	Track gauge	mm	2600
J	Undercarriage overall width (with 600 mm shoes)	mm	3200



## PERFORMANCE DATA

		<b>CX300C</b> Arm 3.18 m	<b>CX350C</b> Arm 3.25 m
<b>Boom length</b>	mm	6150	6450
<b>Bucket radius</b>	mm	1570	1680
<b>Bucket wrist action</b>	°	176°	173°
<b>A Maximum reach at GRP</b>	mm	10500	10980
<b>B Maximum reach</b>	mm	10670	11170
<b>C Max. digging depth</b>	mm	7100	7340
<b>D Max. digging height</b>	mm	10060	10370
<b>E Max. dumping height</b>	mm	7090	7230
<b>Arm digging force (with Power Boost)</b>	kN	132.4	178
<b>Bucket digging force (with Power Boost)</b>	kN	190.2	248.4

# C-SERIES

## HYDRAULIC EXCAVATORS

### CX470C / CX470C MASS EXCAVATION

#### ENGINE

Model \_\_\_\_\_ ISUZU AL-6UZ1X  
 Type \_\_\_\_\_ Water-cooled, 4-cycle diesel, 6-cylinder in line,  
 High pressure common rail system (electric control), turbocharger with air  
 cooled intercooler, without cooling fan, DPD system  
 Emission certified \_\_\_\_\_ Tier IV Interim  
 Displacement \_\_\_\_\_ 9.84 l  
 Bore/Stroke \_\_\_\_\_ 120 x 145 mm  
 Horsepower ISO 14396 (gross) \_\_\_\_\_ 270 kW / 362 hp @ 2000 min<sup>-1</sup>  
 (without fan-pump)  
 Horsepower SAE J1349 (net) \_\_\_\_\_ 245 kW / 329 hp @ 2000 min<sup>-1</sup>  
 (with fan-pump)  
 Maximum torque SAE J1349 (net) \_\_\_\_\_ 1435 Nm @ 1500 min<sup>-1</sup>  
 (without fan-pump)

#### HYDRAULIC SYSTEM

Type \_\_\_\_\_ 2 variable displacement axial piston pumps with regulating system  
 Max oil flow \_\_\_\_\_ 2 x 364 l/min @ 2000 min<sup>-1</sup>  
 Working circuit pressure \_\_\_\_\_  
 Boom/Arm/Bucket circuit \_\_\_\_\_ 31.4 MPa  
 Boom/Arm/Bucket (with Power Boost) \_\_\_\_\_ 34.3 MPa  
 Swing circuit \_\_\_\_\_ 29.4 MPa  
 Travel circuit \_\_\_\_\_ 34.3 MPa

#### SWING

Swing torque \_\_\_\_\_ 150,000 Nm  
 Maximum swing speed \_\_\_\_\_ 9 min<sup>-1</sup>

#### FILTERS

Suction filter \_\_\_\_\_ 105 µm

Return filter \_\_\_\_\_ 6 µm  
 Pilot line filter \_\_\_\_\_ 8 µm

#### TRAVEL

Travel motor \_\_\_\_\_ Variable displacement axial piston motor (automatic travel  
 speed shifting)  
 Max travel speed \_\_\_\_\_ 5.3 km/h  
 Low travel speed \_\_\_\_\_ 3.2 km/h  
 Gradeability \_\_\_\_\_ 70% (35°)  
 Drawbar pull \_\_\_\_\_ 340 kN

#### ELECTRICAL SYSTEM

Circuit \_\_\_\_\_ 24 V  
 Alternator \_\_\_\_\_ 50 Amp  
 Starter motor \_\_\_\_\_ 5.5 kW  
 Battery \_\_\_\_\_ 2 x 12 V 128 Ah / 5 HR

#### UNDERCARRIAGE

Number of carriers rollers (each side) \_\_\_\_\_ 2  
 Number of carriers rollers (each side) \_\_\_\_\_ 3  
 Number of track rollers (each side) \_\_\_\_\_ 9  
 Number of shoes (each side) \_\_\_\_\_ 50  
 Type of shoe \_\_\_\_\_ Triple grouser shoe

#### CAPACITIES

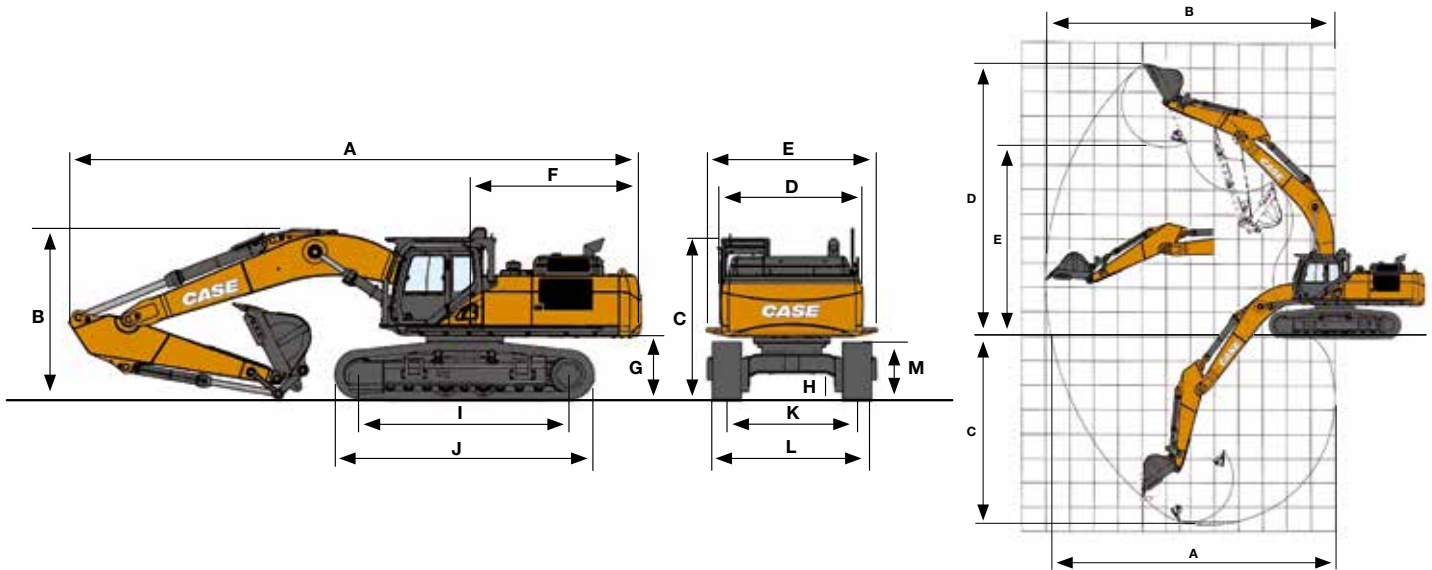
Fuel tank \_\_\_\_\_ 650 l  
 Hydraulic system \_\_\_\_\_ 460 l  
 Cooling system \_\_\_\_\_ 47 l  
 Engine Crank Case \_\_\_\_\_ 36 l

#### WEIGHT

With 3.38 m arm, 2.0 m<sup>3</sup> HD bucket, 600 mm grouser shoe, operator lubricant, cooland and full fuel tank.

CX470C LC	WEIGHT	GROUND PRESSURE
600 mm grouser shoe with fixed sideframe undercarriage	48.100 Kg	0.082 MPa
600 mm grouser shoe with fixed retractable sideframe undercarriage	49.600 Kg	0.085 MPa
CX470C MASS EXCAVATION	WEIGHT	GROUND PRESSURE
600 mm grouser shoe with fixed sideframe undercarriage	49.100 kg	0.083 MPa
600 mm grouser shoe with retractable sideframe undercarriage	50.500 kg	0.086 MPa

# SPECIFICATIONS



## GENERAL DIMENSIONS

		<b>CX470C</b> (Retractable sideframe undercarriage) Arm 3.38 m	<b>CX470C ME</b> (Fixed sideframe undercarriage) Arm 2.53 m	<b>CX470C ME</b> (Retractable sideframe undercarriage) Arm 3.38 m
A	Overall length (without attachment)	mm	6445	6445
A1	Overall length (with attachment)	mm	12060	12030
B	Overall height (with attachment)	mm	3620	3650
C	Cab height	mm	3440	3590
D	Upper structure overall width w/o catwalks	mm	3060	3060
E	Upper structure overall width with catwalks	mm	3590	3590
F	Swing (rear end radius)	mm	3550	3550
G	Clearance height under upper structure	mm	1330	1480
H	Minimum ground clearance	mm	540	740
I	Wheel base (Center to center of wheels)	mm	4400	4400
J	Crawler overall length	mm	5450	5450
M	Crawler tracks height	mm	1240	1220
K	Track gauge	mm	2890	2890
L	Undercarriage overall width (with 600 mm shoes) Retracted"	mm	2990	2990
	Extended	mm	3490	3490

## PERFORMANCE DATA

		<b>CX470C</b> (Retractable sideframe undercarriage) Arm 3.38 m	<b>CX470C ME</b> (Fixed sideframe undercarriage) Arm 2.53 m	<b>CX470C ME</b> (Retractable sideframe undercarriage) Arm 3.38 m
	Boom length	mm	6980	6980
	Bucket radius	mm	1840	1840
	Bucket wrist action	°	176	176
A	A Maximum reach at GRP	mm	11770	11740
B	B Maximum reach	mm	12000	12000
C	C Max. digging depth	mm	7720	7570
D	D Max. digging height	mm	11140	11290
E	E Max. dumping height	mm	7740	7890
	Arm digging force with Power Boost	kN	229 kN	229 kN
	Bucket digging force with Power Boost	kN	270 kN	270 kN

# LIFTING CAPACITY

Front 360°	REACH												
	1.5 m		3.0 m		4.5 m		6.0 m		7.5 m		9.0 m		At max reach

CX300C Standard arm 3.18 m, 1.1 m³ bucket (810 kg) bucket, 600 mm shoes, max reach 10.30 m

9.0 m														3540*	3540*	7,41
7.5 m									4920*	4920*				3290*	3290*	8,72
6.0 m									5790*	5640	4700*	4050		3200*	3200*	9,56
4.5 m							8090*	7790*	7260*	5460	5780*	3960		3240*	3180	10,1
3.0 m			18480*	18480*	12910*	11810	9750*	7480	7940	5220	5900	3830		3370*	2980	10,3
1.5 m			7270*	7270*	15540*	10910	11020	7040	7730	4980	5750	3690		3590*	2930	10,3
0 m			8280*	8280*	16420*	10310	10740	6690	7510	4780	5630	3580		3940*	3000	10
-1.5 m	8220*	8220*	10890*	10890*	16580*	10140	10520	6510	7380	4660	5580	3540		4520*	3230	9,54
-3.0 m	10640*	10640*	14530*	14530*	15850*	10210	10520	6530	7400	4690				5520*	3690	8,78
-4.5 m	14240*	14240*	19680*	19680*	13970*	10420	10390*	6700	7440	4820				6950*	4600	7,66
-6.0 m			14040*	14040*	10210*	10210*	6860*	6790*						6570*	6570	6,04

Front 360°	REACH														
	1.5 m		3.0 m		4.5 m		6.0 m		7.5 m		9.0 m		10.5 m		At max reach

CX350C Standard arm 3.25 m, 1.4 m³ bucket (1170 kg) bucket, 600 mm shoes, max reach 10.70 m

9.0 m															3850*	3850*	8,23
7.5 m									6610*	6610*	5210*	5210*			3620*	3620*	9,36
6.0 m									7420*	7170	6730*	5240			3540*	3540*	10,1
4.5 m																	
3.0 m																	
1.5 m																	
0 m																	
-1.5 m	10500*	10500*	14270*	14270*	18960*	12980	13480	8290	9420	5910	7100	4470		4940*	3850	9,91	
-3.0 m	14510*	14510*	19160*	19160*	18050*	13100	13360*	8340	9460	5960	7160	4560		5990*	4420	9,13	
-4.5 m	19170*	19170*	22330*	22330*	15950*	13400	11930*	8560	8820*	6230				7400*	5500	8,01	
-6.0 m			16200*	16200*	11910*	11910*	8390*	8390*						7110*	7110*	6,4	

Front 360°	REACH														
	1.5 m		3.0 m		4.5 m		6.0 m		7.5 m		9.0 m		10.5 m		At max reach

CX470C Short HD arm 3.38 m, retractable sideframe undercarriage, 2.0 m³ HD bucket (1950 kg), 600 mm shoes, max reach 11.50 m

9.0 m									7590*	7590*					7070*	7070*	8,53
7.5 m									10190*	10190*	8880*	7720			6790*	6770	9,58
6.0 m																	
4.5 m																	
3.0 m																	
1.5 m																	
0 m																	
-1.5 m	17970*	17970*	17970*	17970*	22220*	19940	16820*	12330	13030*	8680	10140*	6560		8540*	5820	9,73	
-3.0 m	25100*	25100*	25100*	25100*	19690*	19650*	15210*	12560	11680*	8870				8200*	6920	8,83	
-4.5 m	19400*	19400*	19400*	19400*	15610*	15610*	12060*	12060	7870*	7870*				7420*	7420*	7,54	
-6.0 m	19400*	19400*	19400*	19400*	15610*	15610*	12060*	12060	7870*	7870*				7420*	7420*	7,54	

Front 360°	REACH											
	3.0 m		4.5 m		6.0 m		7.5 m		9.0 m		At max reach	

CX470C mass excavation, short HD arm 2.53 m, fixed sideframe undercarriage, 3.0 m³ bucket (2400 kg) bucket, 600 mm shoes, max reach 10.40 m

9.0 m									7780*	7780*				5990*	5990*	8,13
7.5 m									9380*	9380*	7720*	6540		5650*	5650*	9,22
6.0 m																
4.5 m																
3.0 m																
1.5 m																
0 m																
-1.5 m	19120*	19120*	22670*	17380	16740*	10690	12780*	7390	9720*	5480	7960*	4990		7960*	4990	9,49
-3.0 m	27010*	27010*	20140*	17630	15160*	10920	11360*	7610			8020*	6020		8020*	6020	8,61
-4.5 m	20500*	20500*	15810*	15810*	11790*	11020								7150*	7150*	7,34





# AROUND YOU

## THE CASE DEALER: YOUR PROFESSIONAL PARTNER

Your success starts with world-class CASE machinery and attachments.

Your CASE dealer will help you work smarter and faster by selecting equipment that delivers performance and operator comfort.

Your dealer has the knowledge and experience necessary to help you choose the right attachments so you can...

- **Work faster and extend equipment life.**
- **Increase machine utilisation.**
- **Increase your capabilities.**

Let your CASE dealer service your machine on the jobsite. You'll be back on the job faster.

Advantages include...

- **Responsive job site service to keep your equipment running.**
- **Increase machine uptime.**
- **Certified service staff and improved parts availability.**



## PARTS

When you're looking for superior parts options to maximise the performance and lower the operating costs of your CASE machinery, turn to CNH Industrial Genuine Parts to keep you equipped for success.

CNH Industrial Genuine Parts fit better, install faster and last longer and in an industry where "high impact" and "heavy lifting" are the norm, the smallest mechanical differences can lead to big problems.

CNH Industrial Genuine Parts from CASE are manufactured from superior materials and specifically designed for CASE construction equipment to continually and reliably withstand the punishment of everyday construction. So steer clear of mechanical problems and future breakdowns, by choosing CNH Industrial Genuine Parts from CASE. They're the only parts that are field-tested and proven to keep your CASE equipment performing its best.

## SERVICE. RELY ON CASE TO DELIVER FOR YOU

Your commitment to your operation is evident every day, but that doesn't minimise the enormous pressure you face to reduce operating costs and improve productivity. So when you're on the job, make sure you have top-notch service and support of CASE behind you every step of the way.

With our factory trained technicians, you can ensure that top-notch service professionals are working on your maintenance needs, so you can focus on your business and the big job challenges ahead, not on the tasks of servicing your equipment.

With your CASE Service, you get more than mere oil changes. A CASE Service ensures your Case equipment receives a thorough service that meets all requirements of its service schedules and properly maintains it for the day-in, day-out punishment of construction work.

Don't give another thought to time-consuming maintenance tasks. Simply rest easy and make certain that your service needs are taken care of by a CASE factory trained technician.

# STANDARD AND OPTIONAL

## STANDARD EQUIPMENT

### ENGINE

Isuzu 6-cylinder turbo-charged diesel  
Tier IV Interim Certified  
Electronic fuel injection  
High pressure common rail system  
Neutral safety start  
Auto-engine warm up, emergency stop  
Glow-plug pre-heat  
EPF (Engine Protection Feature)  
Dual-stage fuel filtration  
Dual element air filter  
Remote oil filter  
Green plug oil drain  
500-hour engine oil change interval  
24-Volt system  
Battery disconnect switch  
High ambient temperature cooling package  
Fuel cooler  
Fuel filter restriction indicator  
Idle start  
Radiator, oil cooler, intercooler  
Refueling Pump

### FUEL ECONOMY SYSTEMS

Engine Idle/Fuel Economy System:  
Auto-idle  
One-touch idle  
Auto-idle shut-down  
Torque control  
Boom Economy Control (BEC)  
Swing Relief Control (SWC)  
Spool Stroke Control (SSC)

### HYDRAULICS

Auto power boost  
Auto travel speed change  
Selectable work modes  
Single acting pedal activated hammer circuit  
Pre-set auxiliary pump settings  
Switch controlled auxiliary selection  
Hydraulic filter restriction indicator  
Oil cooler  
5,000 hour hydraulic oil change interval  
2,000 hour hydraulic filter change interval

### UPPERSTRUCTURE

ISO mirrors  
Handrail – RH access  
ISO guard rails  
Isolation mounted cab (4 point fluid mounting)  
Lifting eyes for counterweight  
Lockable fuel cap, service doors and toolbox  
Rear and side view safety camera

### UNDERCARRIAGE

600 mm steel triple grouser shoes  
LC type (Long Carriage) undercarriage  
Full overlap turntable bearing tub  
Sealed link chain  
Double center track guards on CX350C  
Full Track Guards on CX370C

### ATTACHMENTS

HD Monoboom 6.45 m  
HD Arm 2.63 m

HD bucket linkage without hook  
Boom mounted work light  
Auxiliary pipe brackets  
Centralised lube bank  
Attachment cushion valve

### OPERATOR STATION

Pressurised cab  
Safety glasses for all windows  
Sun visor&rain deflector  
AC/heat/defrost w/auto climate control  
Hot&coolbox, cup holder & ashtray  
Cloth covered air-suspension seat fully adjustable and reclinable  
Adjustable armrests  
Tilting consoles - 4-position  
Low-effort joystick controls  
Sliding cockpit 180 mm  
Auxiliary select system  
Multifunction LCD color monitor (180 mm)  
Anti-theft system (start code system)  
Rubber floor mat  
12 V electric socket /24 Vcigarette lighter  
One-piece right hand window  
Internal & external view mirrors  
Working lights (boom&upperstructure)  
Cab top working lights  
Windshield wiper / washer  
Storage compartments  
On-board diagnostic system

## OPTIONAL EQUIPMENT

### HYDRAULICS

Clamshell circuit/Low-flow circuit  
Single/Double acting multifunction auxiliary circuit - pedal activated (hammer/high flow)

### ATTACHMENTS

HD Arm 3.25 m  
Hydraulic quick coupler provision  
Safety valves and HD bucket linkage with hook

### UNDERCARRIAGE

700 / 800 mm steel shoes  
Full Track Guards on CX350C  
Double center track guards on CX370C

### OPERATOR STATION

ROPS level II  
Front cab guard - vertical bars (OPG level 2)  
Front cab guard - vertical bars (OPG level 1)  
Front mesh screen  
AM/FM CD/radio with antenna and 2-speakers

### OTHERS

Overload warning device  
Travel alarm



# BUILDING A STRONG CASE.

Since 1842, at CASE Construction Equipment we have lived by an unwavering commitment to build practical, intuitive solutions that deliver both efficiency and productivity.

We continually strive to make it easier for our customers to implement emerging technologies and new compliance mandates.

Today, our global scale combined with our local expertise enables us to keep customers' real-world challenges at the center of our product development.

The vast CASE dealers' network is always ready to support and protect your investment and exceed your expectations, while also providing you with the ultimate ownership experience.

Our goal is to build both stronger machines—and stronger communities. At the end of the day, we do what's right for our customers and our communities so that they can count on CASE.

[CASECE.com](http://CASECE.com)

NOTE: Standard and optional fittings can vary according to the demands and specific regulations of each country. The illustrations may include optional rather than standard fittings - consult your CASE dealer. Furthermore, CNH Industrial reserves the right to modify machine specifications without incurring any obligation relating to such changes.

Conforms to directive 2006/42/EC

