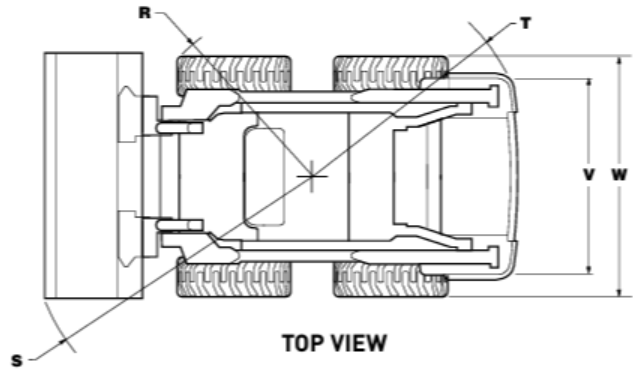
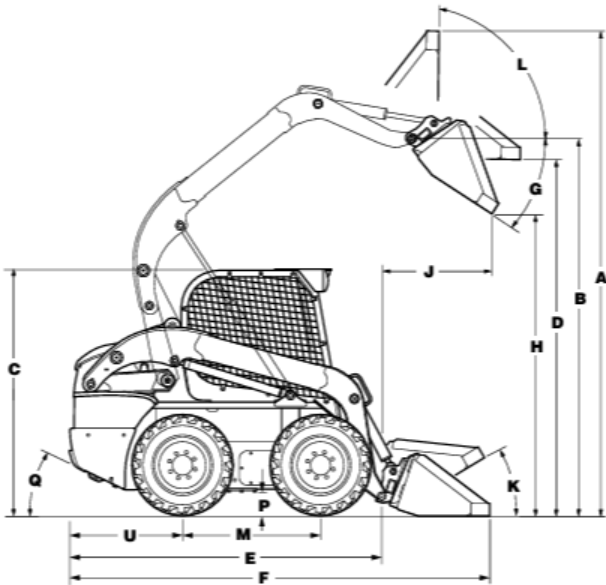


# L320



<b>DIMENSIONS</b>			
<b>Overall operating height</b>			
A	with foundry/excavating bucket short	in (mm)	151.4 (3845)
A	with low profile/standard bucket	in (mm)	155.6 (3952)
A	with low profile extended/long bucket	in (mm)	160.6 (4080)
<b>Height to</b>			
B	Bucket hinge pin	in (mm)	121 (3073)
C	Top of ROPS	in (mm)	78.7 (1998)
D	Bottom of level bucket, fully raised	in (mm)	114.3 (2902)
<b>Overall Length</b>			
E	without attachment with coupler	in (mm)	105.7 (2697)
F	with foundry excavation bucket on ground	in (mm)	131.4 (3338)
F	with low profile bucket	in (mm)	135.4 (3440)
F	with low profile extended bucket	in (mm)	140.5 (3569)
<b>Dump</b>			
G	Dump angle	degrees	52
H	Dump height		
	with foundry/excavating bucket short in (mm)	in (mm)	94.7 (2405)
	with low profile/standard bucket	in (mm)	91.7 (2330)
J	Dump reach (max height)	in (mm)	29.8 (758)

<b>Maximum attachment rollback</b>			
K	Bucket on ground	degrees	34
L	Bucket at full height	degrees	88
<b>Track and clearance</b>			
M	Wheelbase	in (mm)	44.4 (1128)
P	Ground clearance (bottom of belly pan)	in (mm)	8 (203)
Q	Angle of departure	in (mm)	25
<b>Clearance circle</b>			
R	Without bucket	in (mm)	50.7 (1289)
S	With foundry bucket in carry position	in (mm)	80.9 (2055)
S	With low profile bucket on ground	in (mm)	84.6 (2150)
S	With extended low profile bucket on ground	in (mm)	89.3 (2268)
T	Clearance circle rear	in (mm)	62.9 (1599)
V	Tread width	in (mm)	56.9 (1448)
W	Overall width	in (mm)	69.1 (1755)
<b>ENGINE</b>			
Manufacturer/model			ISM / N4LDI-TA-50SL
Type			Diesel 4-stroke, Turbo, D.I.
Bore/stroke	in (mm)	3.31 x 3.94 (84 x 100)	
Displacement	in <sup>3</sup> (L)	135 (2.2)	
Fuel injection			HPCR Direct
Fuel			#2 diesel
Fuel filter			Pre-filter spin on @ 30 microns Main-filter spin on @ 4 microns
Air intake			Turbocharged Aftercooled with external EGR
Cooling			Liquid
<b>Engine Speeds</b>			
High idle - no load		rpm	2825 +/- 25
Rated - full load		rpm	2800
Low idle		rpm	1200 +/- 50

<b>Horsepower per SAE J1349</b>		
	Gross hp (kW)	67 (50) @ 2800 rpm
	Net hp (kW)	64 (47.7) @ 2800 rpm
Peak torque	lb-ft (N•m)	153 (208) @ 1800 rpm
<b>POWER TRAIN</b>		
<b>Drive pump electro hydraulic</b>		
Pump to engine ratio		1:1
Displacement	in <sup>3</sup> (L)	2.14 (35)
Flow	gpm (lpm)	25.1 (95)
Charge pressure	psi (bar)	362 (25)
System relief	psi (bar)	5220 (360)
Control		Electro hydraulic
<b>Drive Motors</b>		
Effective max displacement	in <sup>3</sup> (cc)	19.83 (325)
Effective Displacement opt high speed	in <sup>3</sup> (cc)	-
Speed @ high idle engine	rpm	313
Speed @ optional high speed	rpm	443
Torque @ max displ. and relief pressure	lb-ft (N•m)	1315 (1783)
<b>Travel Speed</b>		
Low range	mph (km/h)	7.8 (12.5)
High range	mph (km/h)	11.4 (18.3)
Final drive	mph (km/h)	Single-reduction chain drive
<b>Parking Brake</b>		
Type		Spring applied, hydraulic release disc
Engagement		Depress on/off brake button on right hand joystick, disconnect lapbelt, get off seat, or stop engine
<b>UNDERCARRIAGE</b>		
System		-
Idlers / rollers per side		-
<b>Ground Pressure</b>		
PSI (with spec belt)		-

<b>HYDRAULIC SYSTEM</b>		
<b>Pumps</b>		
Type		Gear
Displacement standard aux.	in <sup>3</sup> (cc)	1.7 (27.8)
Displacement high flow aux.	in <sup>3</sup> (cc)	84 (13.8)
Standard pump flow	gpm (Lpm)	20.6 (78)
Optional high flow	gpm (Lpm)	30.7 (116.2)
Enhanced high flow	gpm (Lpm)	-
<b>Loader control valve</b>		
Type		3 spool / open center / series
Standard relief pressure	psi (bar)	3046 (210)
Enhanced high flow relief pressure	psi (bar)	-
Hydraulic filter		4 microns / spin on
<b>CYLINDERS</b>		
<b>Lift Cylinder</b>		
Bore diameter	in (mm)	2.5 (63.5)
Rod diameter	in (mm)	1.75 (44.45)
Stroke in	in (mm)	26.8 (681)
Closed length	in (mm)	38.7 (982)
<b>Bucket Cylinders</b>		
Bore diameter	in (mm)	2.75 (69.9)
Rod Diameter	in (mm)	1.38 (34.9)
Stroke in	in (mm)	16.1 (410)
Closed length	in (mm)	24 (610)
<b>Rated Operating Load</b>		
50% tip	lbs. (kg)	2000 (905)
35% tip	lbs. (kg)	-
Tipping load	lbs. (kg)	4000 (1814)
<b>Breakout Forces</b>		
Lift cylinder	lbs. (kN)	3450 (15.3)
Bucket cylinder	lbs. (kN)	7300 (32.5)

<b>Cycle Times</b>		
Raise	sec	3.5
Lower	sec	2.3
Dump	sec	2.6
Roll back	sec	2.0
<b>Loader control valve</b>		
Type		-
Standard relief pressure	psi (bar)	-
Enhanced high flow relief pressure	psi (bar)	-
Hydraulic filter		-
<b>WEIGHTS</b>		
Operating weight	lbs (kg)	6470 (2930)
Shipping weight	lbs (kg)	6170 (2795)
<b>SERVICE CAPACITIES</b>		
Fuel tank, gal (L)		19.5 (73.8)
Engine oil with filter, qt (L)		7.5 (7.1)
System Capacity with filter, qt (L)		34 (32.2)
DEF tank, gal (L)		-