

M SERIES 650M | 750M | 850M | 1150M | 1650M | 2050M

DOZERS



CASE
CONSTRUCTION

GETTING THE JOB DONE, CASE AFTER CASE.



Every day, the case for CASE Construction Equipment grows stronger — from delivering smart solutions for tough on-site challenges to providing the next generation of builders the tools needed to succeed, CASE machines are backed by more than 180 years of grit, sweat and get-the-job-done efficiency.

That no-nonsense attitude extends to our team, too: with over 300 North American dealer locations, a pipeline of inventors and engineers who will stop at nothing to create swift, smooth machines, service technicians who offer fix-it-right the first time service and an expansive parts inventory available at your fingertips, we're serious about offering steadfast sales, service and support as your construction equipment partner.

Together, we're not just building infrastructure — we're building stronger communities on a rock-solid foundation of hard work, hustle and pragmatic innovation. Because when it comes to helping you achieve your goals, no one will outwork us.

DOZERS

02 CASE Story

03 Overview

04 Features & Benefits

06 Specifications

08 Precision

10 Value of Support



WHEN IT COMES TO POWER, WE DON'T BULLDOZE AROUND.

Move over, other dozers — the king of out-push and out-shove has arrived. CASE M Series dozers deliver productivity like no other: they're compact without sacrificing power, precise but fast, customizable while simple to use, comfortable during the dirtiest jobs and — best of all — some of the easiest earthmovers to own and maintain. Whether you're moving mountains or going for the finish grade, CASE dozers will do it, no questions asked.



650M



750M



850M



1150M



1650M



2050M



THESE DOZERS LOVE DIRTY JOBS.

From commercial construction jobs to landscaping and more, CASE M Series dozers confidently, comfortably and quickly help you push even the toughest roadblocks out of the way.



1 THE DEFINITION OF DRAWBAR PULL.

Whether you need huge power or compact strength, we have it: CASE M Series dozer models deliver drawbar pull ranging from 39,086 lb to 80,979 lb.

2 NO DPF, NO REGEN.*

Easily meet Tier 4 Final emissions standards with no diesel particulate filter (DPF) and no stationary active regen required for a DPF. This reduces downtime and maintenance costs.

3 SEE THE BENEFITS.

Floor-to-ceiling glass doors offer a direct line of sight to blade corners, while a sloped hood and an intuitive cab seat positioning give you a direct sightline to your workspace.

4 CUSTOMIZED CONTROL.

Dial in shuttle, steering and blade sensitivities** — including EH (Electro-Hydraulic) Blade Control with blade shake and fine grade buttons — according to your preference, experience level and site conditions.

5 NEXT-LEVEL TRANSMISSION.

All CASE M Series dozers are equipped with a robust dual path hydrostatic transmission that allows both tracks to travel independently, letting you perform counter-rotation while maintaining pushing power.

*750M has EGR & DPF, but no DEF required.

**650M does not offer EH blade control but includes an improved mechanical blade control valve.



6 LOAD SPEED OPTIMIZATION.

The hydrostatic drive system and advanced load management system work together to reduce or increase track speed depending on blade load weight, keeping your dozer running at optimal efficiency 24/7.

7 MULTIPLE TRACK CONFIGURATIONS.

No matter the job, CASE has the right tracks. LT/XLT is the narrowest track gauge with the narrowest track shoe, best used in rocky and harder underfoot conditions. Wide Track (WT) is the wider track gauge with the medium-width track shoe, providing stability and can be used in varying ground conditions. Low Ground Pressure (LGP) is the wider track gauge with widest track shoe width, best used in soft ground conditions.

8 MAINTAIN AND GET BACK ON THE MOVE.

Grouped service points, a removable floor pan, flip-up seat, removable belly pans and large-hinged access panels give you lightning-fast access to maintenance areas. A pin and bushing blade mount also lowers costs and makes servicing easier.

9 QUALITY COMFORT.

A comfortable, sealed cab protects you from the elements, while features like cab-mounted LED lighting, rear camera view and new Bluetooth® radio — making for a quality ride.

SPECS TO SUPPORT WHATEVER'S NEXT.



| SPECIFICATIONS | 650M WT PAT Blade | 750M WT PAT Blade | 850M WT PAT Blade | 1150M WT PAT Blade | 1650M WT PAT Blade | 2050M WT PAT Blade |
|---------------------------------------|---------------------------|-----------------------|-----------------------|-----------------------|-----------------------|-----------------------|
| Engine | FPT F5C F5HFL463D*G003 | FPT F5HFL413J*A002 | FPT F4HFE413P*A008 | FPT F4HFE613F*A002 | FPT F4HFE6132 | FPT F4HFE613J |
| Displacement/Cylinders — in³ (L) | 207.5 (3.4)/4 | 207.5 (3.4)/4 | 275 (4.5)/4 | 409 (6.7)/6 | 409 (6.7)/6 | 409 (6.7)/6 |
| Gross Horsepower @ 2000 rpm — hp (kW) | 74 (55) | 96 (72) | 120 (90) | 138 (103) | 164 (122) | 232 (173) |
| Emissions Certification* Solutions | Tier 4 Final (DOC) | Tier 4 Final (DPF) | Tier 4 Final (SCR) | Tier 4 Final (SCR) | Tier 4 Final (SCR) | Tier 4 Final (SCR) |
| Operating Weight — lb (kg) | 16,457 (7 465) | 20,892 (9 476) | 22,855 (10 367) | 32,271 (14 638) | 39,251 (17 804) | 47,119 (21 372) |
| Blade Width — in (mm)** | 108 (2 731) | 108 (2 731) | 112 (2 845) | 132 (3 353) | 156 (3 962) | 158 (4 064) |
| Maximum Drawbar Pull — lb (kN)† | 39,086 (173.9) | 41,010 (182.4) | 41,010 (182.4) | 48,000 (213.5) | 61,200 (272.2) | 81,000 (360) |
| Maximum Travel Speed — mph (kph)† | 5.0 (8) | 5.2 (8.4) | 5.4 (8.7) | 5.8 (9.3) | 5.8 (9.3) | 6.1 (9.8) |
| Total Flow — gpm (L/min) | 20.3 (78.8) | 20.3 (78.8) | 20.3 (78.8) | 34.9 (132) | 34.9 (132) | 40.4 (153) |
| DIMENSIONS | 650M WT PAT Blade | 750M WT PAT Blade | 850M WT PAT Blade | 1150M WT PAT Blade | 1650M WT PAT Blade | 2050M WT PAT Blade |
| Height to Top of Cab — in (mm) | 105 (2 653) | 109 (2 755) | 109 (2 766) | 116 (2 956) | 116 (2 945) | 124 (3 150) |
| Ground Clearance — in (mm)‡ | 13 (332) | 14 (355) | 14 (366) | 13 (322) | 13 (342) | 16 (408) |
| Blade Height — in (mm)** | 33 (841) | 33 (841) | 36 (910) | 44 (1 119) | 46 (1 176) | 56 (1 418) |
| Blade Lift Above Ground — in (mm) | 35 (892) | 34 (860) | 34 (864) | 36 (926) | 42 (1 077) | 49 (1 238) |
| Blade Depth Below Ground — in (mm) | 21 (533) | 33 (580) | 19 (488) | 20 (518) | 20 (503) | 22 (547) |
| Length of Track On Ground — in (mm) | 85 (2 159) | 89 (2 266) | 93 (2 365) | 108 (2 600) | 122 (3 091) | 128 (3 251) |
| Length (Blade Straight) — in (mm) | 195 (4 951) | 201 (5 110) | 208 (5 277) | 244 (6 191) | 277 (7 038) | 269 (6 833) |
| Width (Blade Straight) — in (mm) | 108 (2 731) | 108 (2 731) | 112 (2 845) | 132 (3 353) | 156 (3 962) | 158 (4 064) |
| Width (Over Track) — in (mm) | 88 (2 228) | 91 (2 304) | 91 (2 320) | 105 (2 692) | 118 (2 994) | 124 (3 150) |
| Link Pitch — in (mm) | 6.125 (155.6) | 6.75 (171.45) | 6.73 (171) | 6.9 (175) | 7.5 (190) | 7.99 (202.9) |

*DOC = Diesel Oxidation Catalyst, DPF = Diesel Particulate Filter, SCR = Selective Catalytic Reduction. **Various blade options available for each track configuration.

†Measured using standard track chain. Increase travel speeds by 4% and reduce drawbar pull by 4% with the optional extended life track chain.

‡Track configuration may impact ground clearance.

THE RIGHT MACHINE. NO COMPROMISES.

| SPECIFICATIONS | 650M | 750M | 850M | 1150M | 1650M | 2050M |
|-------------------------------------|------|------|------|-------|-------|-------|
| ROPS Canopy | ● | ● | ● | — | — | — |
| Optional ROPS Cab | ○ | ○ | ○ | ● | ● | ● |
| Bluetooth® Radio | ● | ● | ● | ● | ● | ● |
| Rear View Camera (Cab Only) | ○ | ○ | ○ | ○ | ○ | ○ |
| Vinyl Mechanical Suspension Seat | ● | ● | ● | — | — | — |
| Cloth Air Suspension Seat | ○ | ○ | ○ | ● | ● | ● |
| Premium LED Work Light Package | ● | ● | ● | ● | ● | ● |
| EH Blade Control | — | ● | ● | ● | ● | ● |
| Drawbar with step | ● | ● | ● | ● | ● | ● |
| Sweeps | ● | ● | ● | ○ | ○ | ○ |
| Rear ROPS Screens | ○ | ○ | ○ | ○ | ○ | ○ |
| 4-Spool Valve | ● | ● | ● | ● | ● | ● |
| Rear Auxiliary Ready | — | — | — | ● | ● | ● |
| Hydraulic Track Adjusters | ● | ● | ● | ● | ● | ● |
| Undercarriage Spade Shovel Holder | ● | ● | ● | ○ | ○ | ○ |
| Ripper – 5 Position with 3 Shank | ○ | ○ | ○ | ○ | ○ | ○ |
| Factory Fit Machine Control Options | — | ○ | ○ | ○ | ○ | ○ |
| CASE Telematics (5 yr) | ● | ● | ● | ● | ● | ● |
| CASE ProCare | ● | ● | ● | ● | ● | ● |

● Standard ○ Optional — Not Applicable

MACHINE CONTROL MADE EASY.



CASE M Series dozers now come factory-fit and calibrated with 2D, dual mast 3D and SiteControl™ CoPilot precision construction solutions. The factory-fit option simplifies acquisition and allows dozer owners to group the precision solution of their choice in with the initial purchase of the machine. It also combines all elements of the investment into a single payment, financing package and interest rate — making ordering and implementation seamless.





Universal Machine Control.

CASE universal machine control provides a universal harness for blade guidance systems, universal machine brackets and mounts and universal jumpers to integrate any industry solution into each dozer (750M–2050M). This allows CASE dozers to be deployed straight from the dealer into any fleet-wide precision or grade control solution an owner, operator or contractor may use on their jobsites.



Get Yourself a Copilot.

CASE SiteControl CoPilot is an easy-to-use system that allows operators to set a desired slope or grade reference. Automatically hold the slope or grade without the need for lasers, masts or GPS. By automatically adjusting the blade position, SiteControl CoPilot enables operators at any experience level to easily achieve and maintain a smooth surface, slope or grade without the need for additional passes and re-work.



Go Mastless with On-Cab.

CASE offers on-cab dozer machine control through its dealer network — eliminating the need for masts affixed to the dozer blade, improving operator visibility to the jobsite, simplifying transportation of the machine, minimizing risk of damage and related downtime.

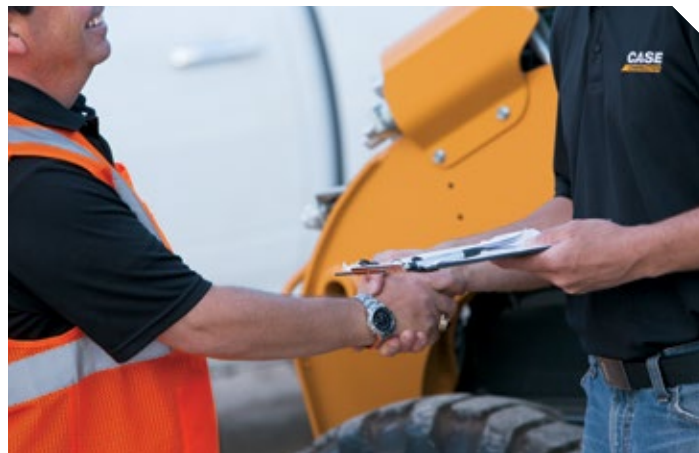


The Power of Scalability.

Our machine control focus at CASE is on scalability: start with the system that works for you and grow from there. CASE and its partners offer a full spectrum of 2D and 3D solutions that are easy to deploy, intuitive to learn and designed to immediately improve operations and the long-term value of your equipment.

NO ONE OUTWORKS US.

The customer doesn't just come first — you're at the center of everything we do. Your local CASE specialists are ready to help you do more of everything you do best: maximizing production, cutting costs and improving safety through a variety of services and technology.



Base & Extended Limited Warranty Coverage.*

- 1-year/Unlimited-hour full-coverage base limited warranty
- 2-year/2,000-hour extended limited engine warranty. Discuss the extended warranty coverage details with your dealer.

CNH CAPITAL Performance Equipment Demands Performance Financing.

From protection plans to customized leasing packages, our financial solutions through CNH Capital are engineered for businesses that don't have time for downtime.



Tech that Delivers.

Command Your Fleet with Telematics

CASE Telematics puts real-time data in your hands. Track location, monitor working status and anticipate maintenance needs across your entire fleet — helping you turn good data into good decisions.

Precision Machine Control that Pays for Itself

SiteControl machine control solutions don't just improve accuracy — they transform profitability. Up your efficiency, productivity and profits anywhere the job takes you.

Local Support. National Strength.

We back tough equipment with even tougher support. With over 300 dealer locations across North America, CASE delivers the right equipment, financing solutions and after-sale support to keep your business moving forward. That's the kind of boots-on-the-ground business support you can expect — and rely on — from CASE.

*See your CASE dealer for limitations, exclusions and confirmation of policies in effect. Engine/EV Batteries warranty coverage provided through CASE. Second year machine warranty coverage applies after base warranty expires.



Protect Your Investment.

ProCare

CASE ProCare is the industry's most comprehensive and standard from-the-factory heavy machine support program that's as powerful as the equipment it protects. Best of all, ProCare comes standard on all new M Series dozers and keeps you covered for up to three years. It's the assurance businesses need to stay competitive, productive and profitable.

PlusCare

Choose service options that match how hard you work. CASE PlusCare protects your equipment investment with customizable maintenance support tailored to your operation's demands. [Scan QR code for more information >](#)



Planned Maintenance Agreements (PMAs)

Get clear, detailed maintenance plans that maximize performance while driving down operating costs, allowing you to focus on what matters — building your business.

Purchased Protection Plan (PPP)

Get protection beyond the base warranty period for both new and used CASE equipment, with flexible payment options and customizable terms through CNH Capital.

COUNTLESS SOLUTIONS



Mini Track Loaders



Skid Steer Loaders



Compact Track Loaders



Compact Dozer Loaders



Mini Excavators



Midi Excavators



Small Articulated Loaders



Compact Wheel Loaders



Electric Vehicles



Backhoe Loaders



Tractor Loaders



Rough Terrain Forklifts



Dozers



Large Wheel Loaders



Motor Graders



Wheeled Excavators



Large Excavators

NO ONE WILL OUTWORK US.™

CASE
CONSTRUCTION

©2025 CNH Industrial America LLC. All rights reserved. CASE and CNH Industrial are trademarks registered in the United States and many other countries, owned by or licensed to CNH Industrial N.V., its subsidiaries or affiliates. Any trademarks referred to herein, in association with goods and/or services of companies other than CNH Industrial America LLC., are the property of those respective companies.

Form No. CCE202509DZ
Replaces Form No. CCE202506DZ

IMPORTANT: CASE Construction Equipment Inc. reserves the right to change these specifications without notice and without incurring any obligation relating to such change. Availability of some models and equipment builds vary according to the country in which the equipment is used. The illustrations and text may include optional equipment and accessories and may not include all standard equipment. Your CASE dealer/distributor will be able to give you details of the products and their specifications available in your area.

CASE Construction Equipment is biodiesel-friendly.

NOTE: All engines meet current EPA emissions regulations. All specifications are stated in accordance with SAE Standards or Recommended Practices, where applicable.

Always read the Operator's Manual before operating equipment. Inspect equipment before using it, and be sure it is operating properly. Follow the product safety signs and use any safety features provided.