



**CASE**  
CONSTRUCTION

# HYDRAULIC EXCAVATORS



CX235C SR

# MAIN REASONS TO CHOOSE THE C-SERIES

## FULL SPECIFICATION EXCAVATORS

- Wide offering of auxiliary hydraulics (multi-function and low flow)
- Undercarriage equipped with the blade as standard

## HIGH RELIABILITY

Robust design, high quality components and durable materials

## GREAT VERSATILITY

- 3 available power modes to match customers needs (A, H, SP)
- Auto Power boost job-sensing hydraulic pressure increase



## COMFORTABLE AND SAFE CAB

- Certified ROPS and FOPS level 2 cab
- Larger cab with multi-adjustable suspension seat and increased foot space
- Improved air conditioning system
- Wide glazed area for an outstanding visibility

## BEST IN CLASS PRECISION AND CONTROLLABILITY

A very smooth control to get the job done easily and in total safety

## HIGH EFFICIENCY

- CASE Intelligent Hydraulic System (CIHS), in combination with the powerful Tier 3 diesel engine, leads to fuel savings of up to 9% compared to the previous model.
- Short Radius design, ideal for any jobsite where space is limited

## FAST CYCLES

Pump Torque Variable Control provides perfect control of the engine and hydraulic system, further boosting productivity

## SAFE OPERATION AND MAINTENANCE

- All filters grouped together for an easy and safe access from the ground
- Standard EMS bushing cut greasing intervals to every 1,000 hours



# C-SERIES

## HYDRAULIC EXCAVATORS



### SHORT SWING RADIUS

The CX235C SR is the perfect machine for road construction, bridges projects and in urban construction sites, any jobsite where space is limited, without the risk of machines damage.

### ROBUST QUALITY

The short radius machines continue a CASE tradition of robust design and high quality build. By bringing together the highest quality components and materials, in a machine that has been designed to work productively, CASE has further improved reliability and durability, reducing ownership costs and cutting downtime for the customer.



### SIMPLIFIED MAINTENANCE

A redesigned upper structure provides access to all service points from ground level, with large side opening access doors. All filters are grouped together for easy access, reducing service time. A synthetic filter extends hydraulic oil service intervals to 5,000 hours while engine oil change intervals are set at a competitive 500 working hours. In addition remote greasing points and standard EMS bushings cut greasing intervals to every 1,000 hours. Side-by-side coolers and radiators are easily accessed for cleaning and maintenance.



## PERFORMANCE AND EFFICIENCY

The CASE Intelligent Hydraulic System (CIHS) incorporates a host of energy saving, performance enhancing functions, to boost efficiency and machine output. A simple operating mode dial delivers three working modes with Super Power set to provide maximum horsepower and hydraulic output. A Powerboost function provides an 8 second boost for maximum digging performance. 5 Energy saving functions allows to optimise performances reducing the fuel consumption depending on the working conditions.

## OPERATOR COMFORT AND SAFETY

ROPS and FOPS Level 2 cab delivers an almost automotive noise level. Efficient air conditioning system, multi-adjustable suspension seating, increased foot space, cup holder and storage compartments deliver the most productive working environment possible. The new full-colour Multifunction Display provides access to on-board diagnostics, reducing downtime for service and maintenance. An ECO gauge provides a constant real-time recording of fuel consumption.







# C-SERIES

## HYDRAULIC EXCAVATORS

### ENGINE

Model \_\_\_\_\_ Tier 3 certified ISUZU GI-4HK1X  
 Type \_\_\_\_\_ Water-cooled, 4-cycle diesel, 4-cylinder in line,  
 High pressure common rail system (electric control), Turbocharger with air  
 cooled intercooler  
 Number of cylinders \_\_\_\_\_ 4  
 Bore/Stroke \_\_\_\_\_ 115 x 125 mm  
 Horsepower ISO 9249 \_\_\_\_\_ 117.3 kW @ 1800 min-1  
 Maximum torque ISO 9249 \_\_\_\_\_ 608 Nm @ 1600 min-1

### HYDRAULIC SYSTEM

Max oil flow \_\_\_\_\_ 2 x 211 l/min @ 1800 min-1  
 2 variable displacement axial piston pumps with regulating system  
 Working circuit pressure \_\_\_\_\_  
 Boom/Arm/Bucket \_\_\_\_\_ 343 Bar / 4974.8 PSI  
 Boom/Arm/Bucket (with auto power up) \_\_\_\_\_ 368 Bar / 5337.4 PSI  
 Swing circuit \_\_\_\_\_ 294 Bar / 4264.1 PSI  
 Travel circuit \_\_\_\_\_ 343 Bar / 4974.8 PSI  
 Auxiliary hydraulic flow and pressure for attachments \_\_\_\_\_ 343 Bar / 4974.8 PSI

### SWING

Maximum swing speed \_\_\_\_\_ 11.8 min-1

### WEIGHT

With 2,94 m Arm, 0.8 m<sup>3</sup> bucket, 600 mm grouser shoe, operator, lubricant, coolant and full fuel tank

CX235C SR LC	WEIGHT (KG)
600 mm grouser shoe	24,200

### TRAVEL

Travel motor \_\_\_\_\_ Variable displacement axial piston motor  
 Max travel speed \_\_\_\_\_ 5.0 km/h (Automatic travel speed shifting)  
 Low travel speed \_\_\_\_\_ 3.2 km/h  
 Gradeability \_\_\_\_\_ 70% (35°)  
 Drawbar pull \_\_\_\_\_ 201 kN

### ELECTRICAL SYSTEM

Voltage \_\_\_\_\_ 24 V  
 Alternator \_\_\_\_\_ 50 Amp

### UNDERCARRIAGE

Number of carriers rollers Blade/LC (each side) \_\_\_\_\_ 2/2  
 Number of track rollers Blade/LC (each side) \_\_\_\_\_ 7/8  
 Number of shoes Blade/LC (each side) \_\_\_\_\_ 46/49  
 Type of shoe \_\_\_\_\_ Triple grouser shoe

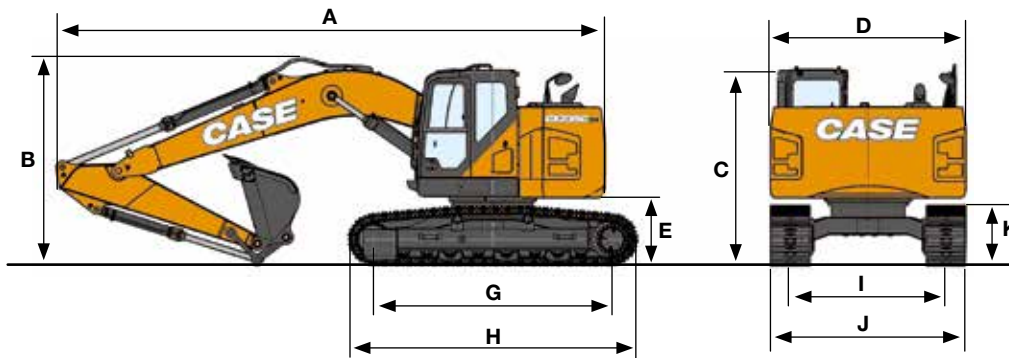
### CAPACITIES

Fuel tank \_\_\_\_\_ 320 l  
 Hydraulic system \_\_\_\_\_ 252 l  
 Cooling system \_\_\_\_\_ 30.9 l  
 Noise level inside cab \_\_\_\_\_ 73 dB(A)

With 2,94 m Arm, 0.8 m<sup>3</sup> bucket, 600 mm grouser shoe, operator, lubricant, coolant and full fuel tank

CX235C SR BLADE	WEIGHT (kg)
600 mm grouser shoe	25,600

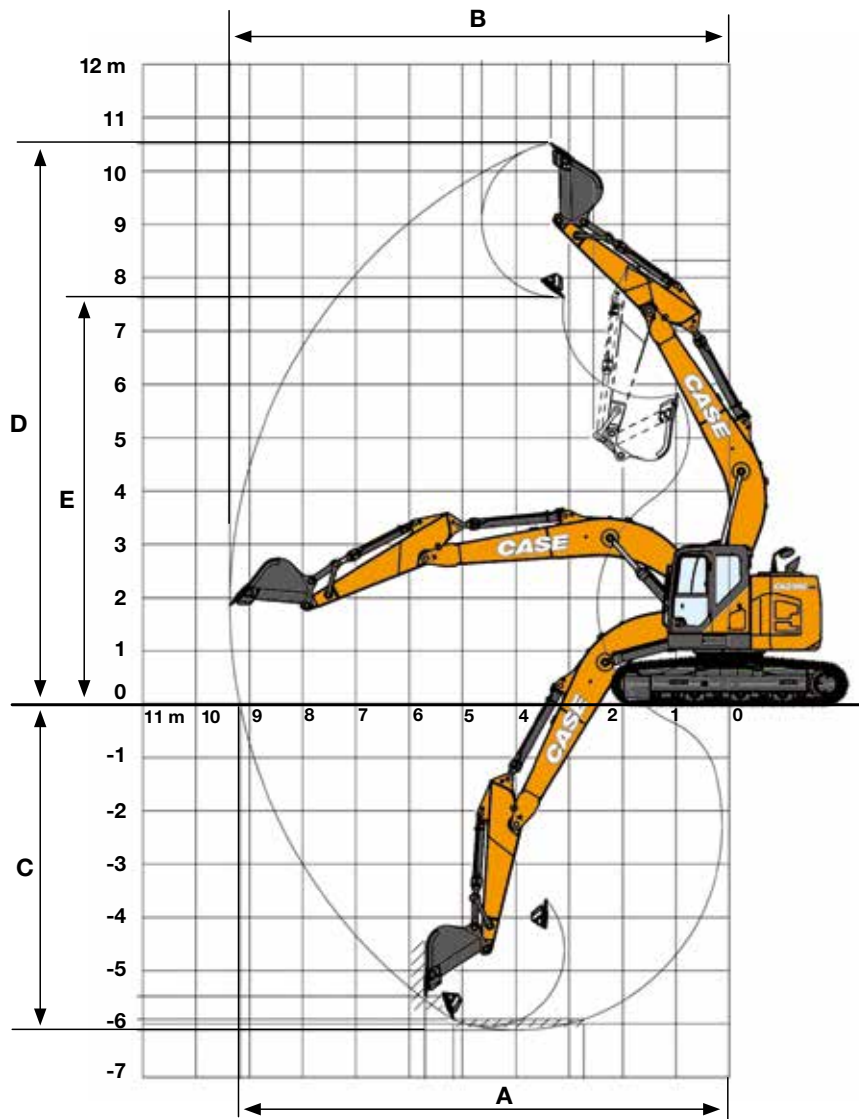
### GENERAL DIMENSIONS



CX235C SR		BLADE ARM 2.94 M	LC ARM 2.94 M
	Overall length (without attachment)	mm 4700	4470
A	Overall length (with attachment)	mm 9210	8830
B	Overall height (with attachment)	mm 3090	3090
C	Cab height	mm 3140	3040
D	Upper structure overall width	mm 2990	2990
	Swing (rear end) radius	mm 1720	1720
E	Clearance height under upper structure	mm 1020	1020
F	Minimum ground clearance	mm 440	440
G	Wheel base (Center to center of wheels)	mm 3370	3660
H	Crawler overall length	mm 4180	4470
I	Track gauge	mm 2200	2390
J	Undercarriage overall width (with 500 mm shoes)	mm 2800	2990
K	Crawler tracks height	mm 920	920



# SPECIFICATIONS



## CX235C SR

## BLADE/LC ARM 2.4 M

## BLADE/LC ARM 2.94 M

<b>Boom length</b>	mm	5700	5700
<b>Bucket radius</b>	mm	1450	1450
<b>Bucket wrist action</b>	°	177	177
<b>A Maximum reach at GRP</b>	mm	9180	9670
<b>B Maximum reach</b>	mm	9370	9850
<b>C Max. digging depth</b>	mm	6120	6650
<b>D Max. digging height</b>	mm	10520	10860
<b>E Max. dumping height</b>	mm	7630	7970

## DIGGING FORCE

With 0,80 m<sup>3</sup> bucket (ISO 6015)

## CX235 SR

## BLADE/LC ARM 2.4 M

## BLADE/LC ARM 2.94 M

<b>Arm digging force</b>	kN	123	103
- with auto power up	kN	132	110
<b>Bucket digging force</b>	kN	142	142
- with auto power up	kN	152	152

# LIFTING CAPACITY

Front 360°	REACH													
	0 m		1.5 m		3.0 m		4.5 m		6.0 m		7.5 m		At max reach	

CX235C BLADE. Version Standard arm. 2.94 m arm length, 0.80 m<sup>3</sup> bucket (645 kg), 600G shoes, max reach 9.85 m - Blade down

9.0 m								3090*	3090*					2470*	2470*	6.26
7.5 m								3950*	3950*	2960*	2960*			2180*	2180*	7.76
6.0 m								4330*	4330*	3980*	3430			2080*	2080*	8.69
4.5 m																
3.0 m																
1.5 m																
0 m																
-1.5 m																
-3.0 m																
-4.5 m																
-6.0 m																

CX235C BLADE. Version Standard arm. 2.94 m arm length, 0.80 m<sup>3</sup> bucket (645 kg), 600G shoes, max reach 9.85 m - Blade up

9.0 m								3090*	3090*					2470*	2470*	6.26
7.5 m								3950*	3950*	2960*	2960*			2180*	2180*	7.76
6.0 m								4330*	4330*	3980*	3270			2080*	2080*	8.69
4.5 m																
3.0 m																
1.5 m																
0 m																
-1.5 m																
-3.0 m																
-4.5 m																
-6.0 m																

\* Hydraulic capacity 87%



# STANDARD AND OPTIONAL

## ENGINE

Isuzu 4-cylinder turbodiesel in line  
Certified Tier 3  
Electronic fuel injection  
High pressure common rail system  
Variable geometry turbo charger  
Cooled Exhaust Gas Recirculation (CEGR)  
Neutral safety start  
Auto-engine warm up, emergency stop

Glow-plug pre-heat

### Idle System:

Auto-idle  
One-touch idle  
Idle shut-down  
EPF (Engine Protection Feature)  
Dual-stage fuel filtration  
Dual element air filter  
Remote oil filter  
Green plug oil drain  
500-hour engine oil change interval

## HYDRAULICS

Auto power boost  
Auto swing priority  
Auto travel speed change  
Selectable work modes  
Overload warning device  
SWC - SWING RELIEF CONTROL  
SSC - SPOOL STROKE CONTROL  
BEC - BOOM ECONOMY CONTROL  
AEC - AUTO ECONOMY CONTROL  
SEC - SWING ECONOMY CONTROL

10 x auxiliary flow settings in memory  
Auxiliary valve  
Auxiliary pipe brackets  
5,000 hour hydraulic oil change interval  
1,000 hour hydraulic filter change interval  
Hydraulic track adjustment  
SAHR brake  
10 x auxiliary flow settings in memory

## UPPERSTRUCTURE

Common key vandal locks  
Swivel guard belly pan  
Rear view safety camera  
4-point isolation mounted cab (fluid and spring)

## ATTACHMENT

Bucket linkage with hook  
Boom mounted work light (70 watt)  
Attachment cushion valve  
Arm and boom regeneration  
Standard boom 5.70m  
Arm 2.40 m HD / Arm 2.94 m  
EMS bushings

## OPERATOR STATION

ROPS/FOPS level 2 cab  
Pressurised cab  
Tempered safety glass  
One-touch lock front window  
Sun visor & rain deflector  
AC/heat/defrost w/ auto climate control  
Cup holder & ashtray  
Interior dome light  
Cloth covered air-suspension seat

Seat-belt  
Adjustable armrests  
Low-effort controls (short)  
Radio mute switch on control lever  
Controls pre-wired for auxiliary  
Auxiliary select system  
Straight travel  
Aux-in port for personal electronics  
Multifunction colour monitor  
Rear-view camera  
Anti-theft system (start code system)  
Rubber floor mat  
12-volt electric socket  
24-volt cigarette lighter  
One-piece right hand window  
2 internal & 3 external view mirrors  
2 working lights (boom & upperstructure)  
Beacon harness  
2 cab top working lights  
Windshield wiper / washer  
Clear (Lexan) roof window w/sunshade  
Storage compartments  
On-board diagnostic system  
Interior dome light (10W)  
Sliding cockpit (100 mm)  
Beacon harness  
**UNDERCARRIAGE**  
600 mm steel shoes, triple semigrouser strutted and sealed link  
Full overlap turntable bearing tub  
Single track guide

Standard and optional equipment shown can vary by country.



# BUILDING A STRONG CASE.

Since 1842, at CASE Construction Equipment we have lived by an unwavering commitment to build practical, intuitive solutions that deliver both efficiency and productivity.

We continually strive to make it easier for our customers to implement emerging technologies and new compliance mandates.

Today, our global scale combined with our local expertise enables us to keep customers' real-world challenges at the center of our product development.

The vast CASE dealers' network is always ready to support and protect your investment and exceed your expectations, while also providing you with the ultimate ownership experience.

Our goal is to build both stronger machines—and stronger communities. At the end of the day, we do what's right for our customers and our communities so that they can count on CASE.

## CASECE.com

NOTE: Standard and optional fittings can vary according to the demands and specific regulations of each country. The illustrations may include optional rather than standard fittings - consult your CASE dealer. Furthermore, CNH Industrial reserves the right to modify machine specifications without incurring any obligation relating to such changes.

Conforms to directive 2006/42/EC

