



**CASE**  
CONSTRUCTION

# HYDRAULIC EXCAVATORS



CX210C LC | CX250C LC

# MAIN REASONS TO CHOOSE THE C-SERIES

## HIGH VERSATILITY

- Standard Flow Regulation;
- Up to 10 attachments settings can be memorised;
- Optional Clamshell circuit;
- MULTI-FITS (safe, automatic and universal).

## HIGH RELIABILITY

- New HD boom and arm design: more robust and reinforced to optimise durability and performance;
  - Re-designed attachment for more durability: less maintenance cost, higher resale value.
- With the CASE top manufacturing quality.

## HIGH PRECISION AND CONTROLLABILITY

- Advanced Hydraulic System;
- Unique pump torque control system;
- Advanced energy management with innovative fuel saving functions;
- 3 available power modes to match customers needs.



## MAXIMUM COMFORT

Extra large cab: 7% more space Vs previous model.

Low noise and vibrations.

Ergonomic workstation.

Real time parameters monitoring.

Fully adjustable seat/joysticks and brand new LCD cluster.

## SAFETY FIRST

- A full range of optional front guards;
- Superior visibility;
- Standard Rear view camera.

## HIGH EFFICIENCY

A combination of engine technology and Advanced Hydraulic System grants 10% of fuel economy. With the 5 Energy Saving Controls, Isuzu Tier III engine and the new ECO gauge function.

## LOW TOTAL COST OF OWNERSHIP AND REPAIR COST

- Cab filters access form
- Standard EMS (Easy Maintenance System) bushings
- Long maintenance intervals
- Low effort for serviceability
- Good service access, onboard diagnosis



# C-SERIES

## HYDRAULIC EXCAVATORS

### POWERFUL AND FUEL EFFICIENT ENGINE

The C-Series Hydraulic Excavators are powered by Isuzu engines, designed to boost machine performances and optimize fuel economy.

The 4 cylinders Isuzu engine delivers outstanding power and torque, that reduces the transient time making the hydraulic system immediately reactive to any load.

Fuel consumption can be constantly monitored by the operator throughout the new ECO gauge function, that displays in real time the energy level utilized.



### ADVANCED ENERGY MANAGEMENT

- **POWER SAVE:** the pump discharge pressure when the machine is at rest.
- **PUMP TORQUE CONTROL:** prevents drop in engine rpm when lifting heavy loads.

Less fuel consumption and effective energy usage thanks to the **5 ENERGY SAVING FUNCTIONS:**

- **BEC - Boom Economy Control:** it increases the fuel efficiency during the lowering of the boom and swing operations;
- **AEC - Automatic Economy Control:** it reduces the rpm when the joysticks are in neutral position;



- **SRC - Swing Relief Control:** the pump sends a small amount of oil at the very beginning of the slewing operations;
- **SSC - Spool Stroke Control:** automatic pressure adjustment during digging and leveling;
- **AES - Auto Energy Safe:** Auto Idle and Idle Shut Down.



## HIGH RELIABILITY

### Improved design for durable performances

The new boom and arm are Heavy Duty, more robust and reinforced in the more stressed areas, optimising the durability and the performances at the same time: the boom is average 8% lighter than the previous series. HD booms and arms are standard, to grant the maximum reliability also in the toughest applications.

**Increased productivity:** extra lifting capacity thanks to the front attachment optimisation;

**Maximum efficiency:** lighter, but stronger front attachment (more lifting, less fuel consumption);

**Higher resale value:** re-designed attachment for more durability and less maintenance cost.



## ROBUSTNESS

The C-Series Hydraulic Excavators undercarriage is made with high quality components, with thick structural plates in the areas where components required and higher level of resistance.

### Heavy duty solutions

The Heavy duty undercarriage ensures safe and productive performance on all terrains.

- X-chassis design to grant a better weight distribution and a superior stability;
- Heavy duty and high quality material;
- Heavy duty travel engine protection;
- Extra heavy duty carrier roller brackets.

# C-SERIES

## HYDRAULIC EXCAVATORS

### COMFORT AND SAFETY

- Superior wide and roomy cab with ample legroom.
- New cushioning system to lower noise and vibration levels for the operator's ultimate comfort.
- Totally adjustable workstation with fully reclinable air –suspended seat.
- Air conditioning system with 25% more airflow and 6% better performances.



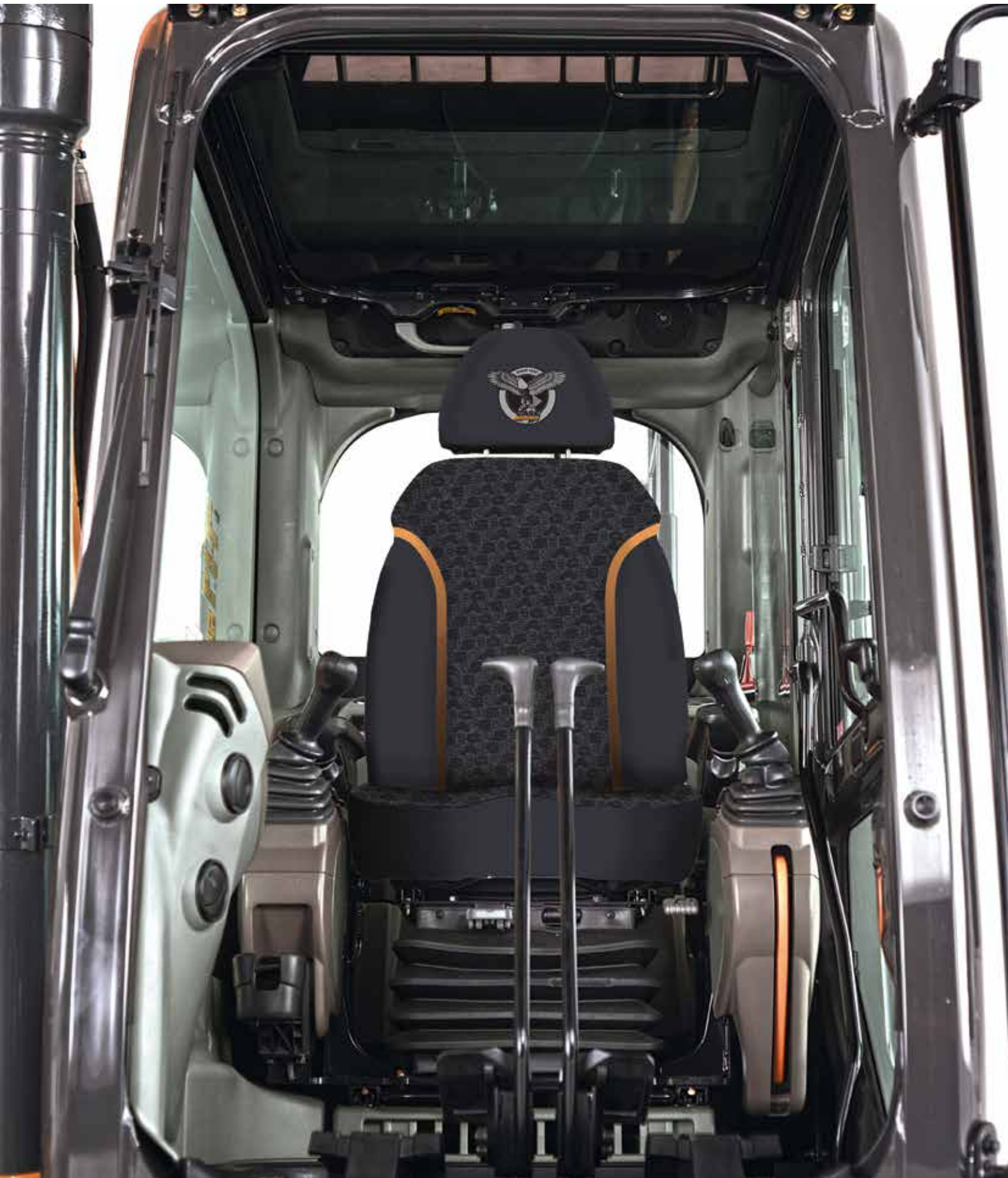
### OUTSTANDING VISIBILITY

- Wider glazed surface with single piece side window.
- New 7" LCD cluster for a more secure and safe working environment and to constant monitor the main machine parameters.



# COMFORT RULES

## FIRST CLASS CAB AND SEAT









**CX210C**

# C-SERIES

## HYDRAULIC EXCAVATORS

### CX210C LC

#### ENGINE

Model \_\_\_\_\_ ISUZU GI-4HK1X  
 Type \_\_\_\_\_ Water-cooled, 4-cycle diesel, 4-cylinder in line,  
 High pressure common rail system (electric control), Turbocharger with air  
 cooled intercooler.  
 Emission certified \_\_\_\_\_ Tier III  
 Displacement \_\_\_\_\_ 5.19 l  
 Bore/Stroke \_\_\_\_\_ 115 x 125 mm  
 Horsepower ISO 14396 (net) \_\_\_\_\_ 122 kW at 1800 min<sup>-1</sup>  
 Imperial \_\_\_\_\_ 163 hp  
 Metric \_\_\_\_\_ 166 hp  
 Maximum torque ISO 14396 (net) \_\_\_\_\_ 624 Nm at 1500 min<sup>-1</sup>

#### HYDRAULIC SYSTEM

Type \_\_\_\_ 2 variable displacement axial piston pumps with regulating system  
 Max oil flow \_\_\_\_\_ 2 x 211 l/min @ 1800 min<sup>-1</sup>  
 Working circuit pressure \_\_\_\_\_  
 Boom/Arm/Bucket circuit \_\_\_\_\_ 34.3 MPa  
 Boom/Arm/Bucket (with Power Boost) \_\_\_\_\_ 36.8 MPa  
 Swing circuit \_\_\_\_\_ 29.4 MPa  
 Travel circuit \_\_\_\_\_ 34.3 MPa

#### SWING

Maximum swing speed \_\_\_\_\_ 11.5 min<sup>-1</sup>  
 Swing torque \_\_\_\_\_ 64000 Nm

#### FILTERS

Suction filter \_\_\_\_\_ 105 µm  
 Return filter \_\_\_\_\_ 6 µm  
 Pilot line filter \_\_\_\_\_ 8 µm

#### WEIGHT AND GROUND PRESSURE

With 2.94 m Arm, 0.8 m<sup>3</sup> bucket, 600 mm grouser shoe, operator, lubricant, coolant, full fuel tank and top guard OPG level 2

CX210C LC	WEIGHT (kg)	GROUND PRESSURE (MPa)
600 mm grouser shoe	21,600	0.045

#### TRAVEL

Travel motor \_\_\_\_\_ Variable displacement axial piston motor  
 Max travel speed \_\_\_\_\_ 5.6 km/h  
 Low travel speed \_\_\_\_\_ 3.4 km/h  
 Gradeability \_\_\_\_\_ 70% (35°)  
 Drawbar pull \_\_\_\_\_ 188 kN

#### ELECTRICAL SYSTEM

Voltage \_\_\_\_\_ 24V  
 Alternator \_\_\_\_\_ 50 Amp  
 Starter motor \_\_\_\_\_ 5.0 kW  
 Battery \_\_\_\_\_ 2x12V 92 Ah/5HR

#### UNDERCARRIAGE

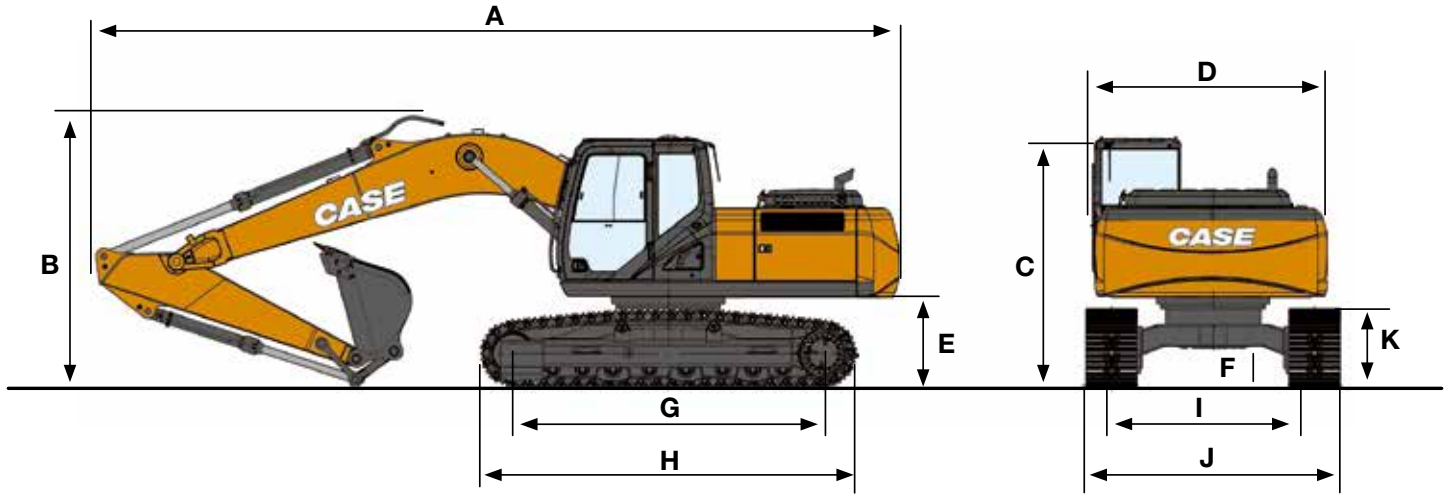
Number of carriers rollers (each side) \_\_\_\_\_ 2  
 Number of track rollers (each side) \_\_\_\_\_ 8  
 Number of shoes (each side) \_\_\_\_\_ 49  
 Type of shoe \_\_\_\_\_ Triple grouser shoe

#### CAPACITIES

Fuel tank \_\_\_\_\_ 410 l  
 Hydraulic system \_\_\_\_\_ 240 l  
 Cooling system \_\_\_\_\_ 30.6 l  
 Engine crank case \_\_\_\_\_ 23.1 l

# SPECIFICATIONS

## CX210C LC

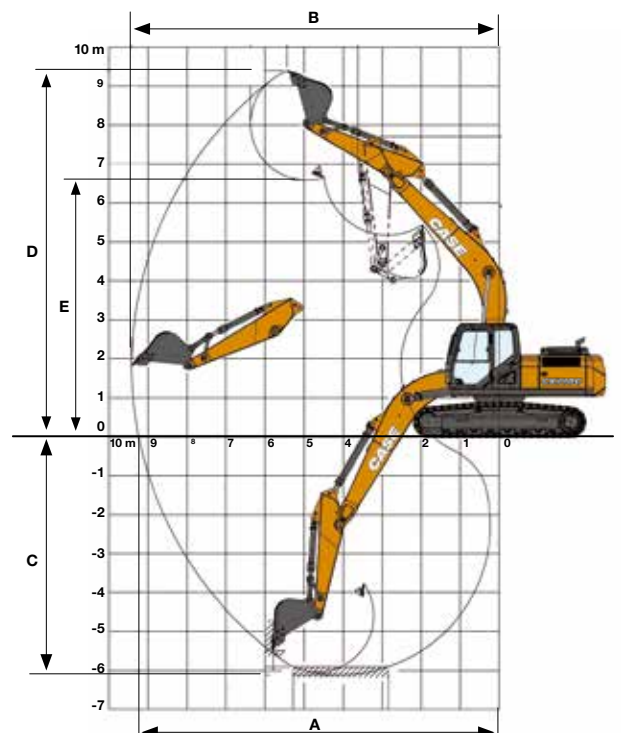


## GENERAL DIMENSIONS

		Arm 2.94 m
	Overall length (without attachment)	mm 4960
A	Overall length (with attachment)	mm 9400
B	Overall height (with attachment)	mm 3070
C	Cab height	mm 3070
D	Upper structure overall width	mm 2770
	Swing (rear end) radius	mm 2750
E	Clearance height under upper structure	mm 1040
F	Minimum ground clearance	mm 440
G	Wheel base (Center to center of wheels)	mm 3660
H	Crawler overall length	mm 4470
K	Crawler tracks height	mm 920
I	Track gauge	mm 2390
J	Undercarriage overall width (with 600 mm shoes)	mm 2990

## PERFORMANCE DATA

		Arm 2.94 m
	Boom length	mm 5700
	Bucket radius	mm 1450
	Bucket wrist action	° 177
A	Maximum reach at GRP	mm 9730
B	Maximum reach	mm 9900
C	Max. digging depth	mm 6650
D	Max. digging height	mm 9610
E	Max. dumping height	mm 6810
	Arm digging force	kN 103
	Arm digging force with Power Boost	kN 110
	Bucket digging force	kN 142
	Bucket digging force with Power Boost	kN 152



# C-SERIES

## HYDRAULIC EXCAVATORS

### CX250C LC

#### ENGINE

Model \_\_\_\_\_ ISUZU GH-4HK1X  
 Type Water-cooled, 4-cycle diesel, 4-cylinder in line, High pressure common rail system (electric control), Turbocharger with air cooled intercooler.  
 Emission certified \_\_\_\_\_ Tier III  
 Displacement \_\_\_\_\_ 5.19 l  
 Bore/Stroke \_\_\_\_\_ 115 x 125 mm  
 Horsepower ISO 14396 \_\_\_\_\_ 140 kw @ 2000 min<sup>-1</sup>  
 \_\_\_\_\_ Imperial \_\_\_\_\_ 188 hp  
 \_\_\_\_\_ Metric \_\_\_\_\_ 190 hp  
 Maximum torque ISO 14396 \_\_\_\_\_ 643 Nm @ 1800 min<sup>-1</sup>

#### HYDRAULIC SYSTEM

Max oil flow \_\_\_\_\_ 2 x 234 l/min @ 2000 min<sup>-1</sup>  
 Boom/Arm/Bucket circuit \_\_\_\_\_ 34.3 MPa  
 Boom/Arm/Bucket circuit (with Power Boost) \_\_\_\_\_ 36.8 MPa  
 Swing circuit \_\_\_\_\_ 28.9 MPa  
 Travel circuit \_\_\_\_\_ 34.3 MPa

#### SWING

Maximum swing speed \_\_\_\_\_ 10.6 rpm  
 Swing torque \_\_\_\_\_ 74900 Nm

#### FILTERS

Suction filter \_\_\_\_\_ 105 µm  
 Return filter \_\_\_\_\_ 6 µm  
 Pilot line filter \_\_\_\_\_ 8 µm

#### TRAVEL

Travel motor \_\_\_\_\_ Variable displacement axial piston motor  
 Max travel speed \_\_\_\_\_ 5.5 km/h  
 Low travel speed \_\_\_\_\_ 3.5 km/h  
 Gradeability \_\_\_\_\_ 70% (35°)  
 Drawbar pull \_\_\_\_\_ 201 kN

#### ELECTRICAL SYSTEM

Voltage \_\_\_\_\_ 24V  
 Alternator \_\_\_\_\_ 50 Amp  
 Starter motor \_\_\_\_\_ 5.0 kW  
 Battery \_\_\_\_\_ 2x12V 92 Ah/5HR

#### UNDERCARRIAGE

Number of carriers rollers (each side) \_\_\_\_\_ 2  
 Number of track rollers (each side) \_\_\_\_\_ 9  
 Number of shoes (each side) \_\_\_\_\_ 51  
 Type of shoe \_\_\_\_\_ Triple grouser shoe

#### CAPACITIES

Fuel tank \_\_\_\_\_ 410 l  
 Hydraulic system \_\_\_\_\_ 250 l  
 Cooling system \_\_\_\_\_ 30.2 l  
 Engine crank case \_\_\_\_\_ 23.1 l

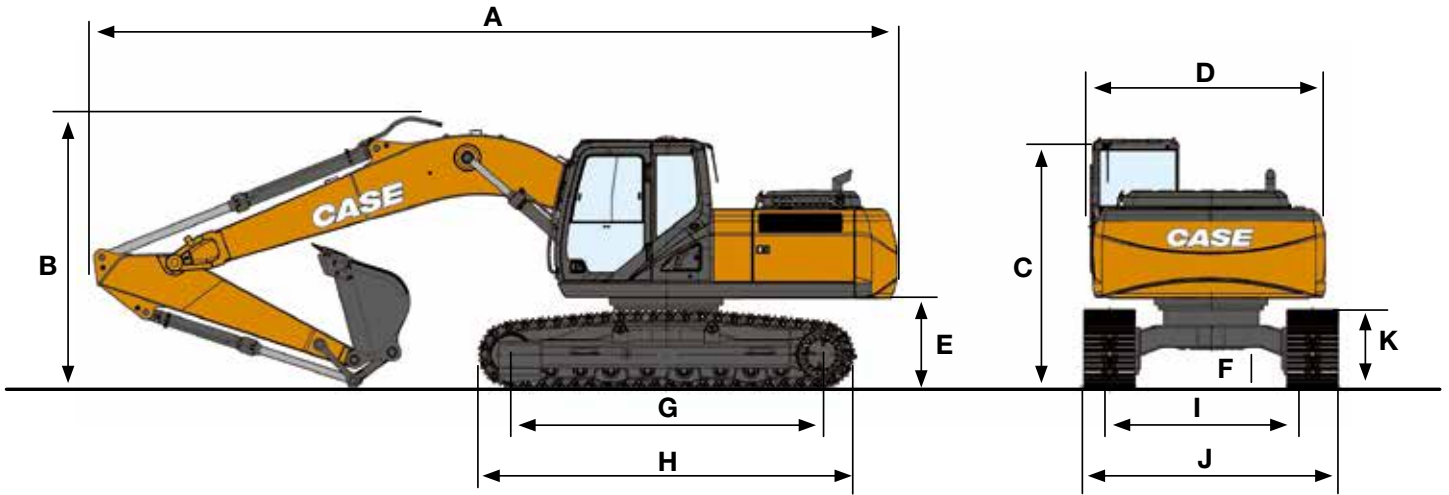
### WEIGHT AND GROUND PRESSURE

With 3.00 m Arm, 1.1 m<sup>3</sup> bucket, 600 mm grouser shoe, operator, lubricant, coolant, full fuel tank

CX250C LC	WEIGHT (kg)	GROUND PRESSURE (MPa)
600 mm grouser shoe	25,400	0.050

# SPECIFICATIONS

## CX250C LC

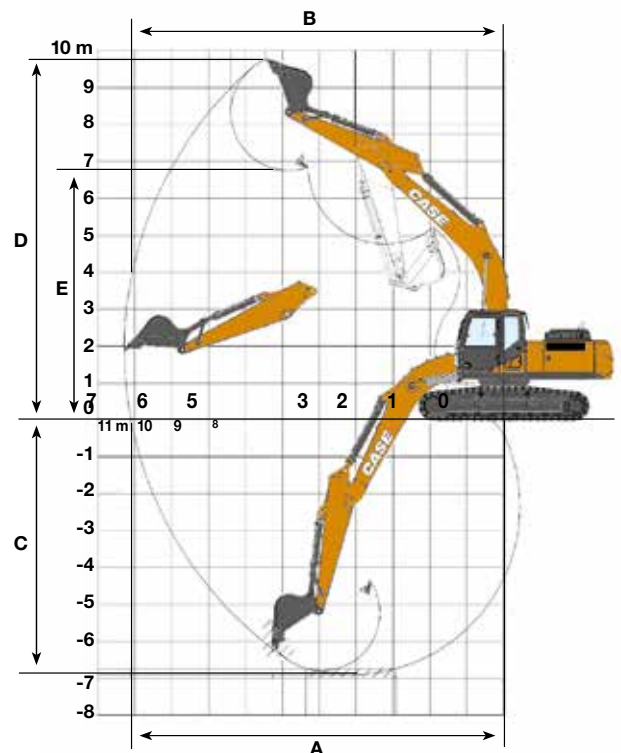


## GENERAL DIMENSIONS

		Arm 3.00 m
	Overall length (without attachment)	mm 5270
A	Overall length (with attachment)	mm 9930
B	Overall height (with attachment)	mm 3150
C	Cab height	mm 3130
D	Upper structure overall width	mm 2770
E	Clearance height under upper structure	mm 1100
F	Minimum ground clearance	mm 440
G	Wheel base (Center to center of wheels)	mm 3840
H	Crawler overall length	mm 4650
K	Crawler tracks height	mm 940
I	Track gauge	mm 2590
J	Undercarriage overall width (with 600 mm shoes)	mm 3190

## PERFORMANCE DATA

		Arm 3.0 m
	Boom length	mm 5850
	Bucket radius	mm 1580
	Bucket wrist action	° 175
A	Maximum reach at GRP	mm 10100
B	Maximum reach	mm 10280
C	Max. digging depth	mm 6900
D	Max. digging height	mm 9760
E	Max. dumping height	mm 6760
	Arm digging force	kN 120
	Arm digging force with Power Boost	kN 129
	Bucket digging force	kN 162
	Bucket digging force with Power Boost	kN 174



# AROUND YOU

## THE CASE DEALER: YOUR PROFESSIONAL PARTNER

Your success starts with world-class CASE machinery and attachments.

Your CASE dealer will help you work smarter and faster by selecting equipment that delivers performance and operator comfort.

Your dealer has the knowledge and experience necessary to help you choose the right attachments so you can...

- **Work faster and extend equipment life.**
- **Increase machine utilisation.**
- **Increase your capabilities.**

Let your CASE dealer service your machine on the jobsite. You'll be back on the job faster.

Advantages include...

- **Responsive job site service to keep your equipment running.**
- **Increase machine uptime.**
- **Certified service staff and improved parts availability.**



## PARTS

When you're looking for superior parts options to maximise the performance and lower the operating costs of your CASE machinery, turn to CNH Industrial Genuine Parts to keep you equipped for success.

CNH Industrial Genuine Parts fit better, install faster and last longer and in an industry where "high impact" and "heavy lifting" are the norm, the smallest mechanical differences can lead to big problems.

CNH Industrial Genuine Parts from CASE are manufactured from superior materials and specifically designed for CASE construction equipment to continually and reliably withstand the punishment of everyday construction. So steer clear of mechanical problems and future breakdowns, by choosing CNH Industrial Genuine Parts from CASE. They're the only parts that are field-tested and proven to keep your CASE equipment performing its best.

## SERVICE. RELY ON CASE TO DELIVER FOR YOU

Your commitment to your operation is evident every day, but that doesn't minimise the enormous pressure you face to reduce operating costs and improve productivity. So when you're on the job, make sure you have top-notch service and support of CASE behind you every step of the way.

With our factory trained technicians, you can ensure that top-notch service professionals are working on your maintenance needs, so you can focus on your business and the big job challenges ahead, not on the tasks of servicing your equipment.

With your CASE Service, you get more than mere oil changes. A CASE Service ensures your Case equipment receives a thorough service that meets all requirements of its service schedules and properly maintains it for the day-in, day-out punishment of construction work.

Don't give another thought to time-consuming maintenance tasks. Simply rest easy and make certain that your service needs are taken care of by a CASE factory trained technician.

# LIFTING CAPACITY

Front 360°	REACH												
	1.5 m		3.0 m		4.5 m		6.0 m		7.5 m		9.0 m		At max reach

CX210C Standard arm 2.94 m, 0.80 m<sup>3</sup> bucket (650 kg) bucket, 600 mm shoes, max reach 9.90 m

7.5 m									2970*	2970*			2190*	2190*	7,76	
6.0 m									3790*	3500			2080*	2080*	8,71	
4.5 m								4630*	4630*	4290*	3380	3140*	2370	2070*	2070*	9,28
3.0 m			9870*	9870*	7400*	7300*	5690*	4720	4760*	3230	3640	2300	2140*	2040	9,54	
1.5 m	6960*	6960*	9250*	9250*	9160*	6890	6620*	4410	4840	3070	3550	2220	2280*	1990	9,53	
0 m	9520*	9520*	8340*	8340*	10170*	6440	6710	4170	4690	2930	3490	2160	2520*	2050	9,28	
-1.5 m	13390*	13390*	10500*	10500*	10360*	6290	6560	4030	4610	2860			2940*	2240	8,77	
-3.0 m			14210*	12790	10090*	6360	6590	4080	4690	2930			3700*	2650	7,95	
-4.5 m			13170*	12830	9040*	6580	6490*	4320					5220*	3450	6,79	
-6.0 m					6160*	6160*							5840*	5840*	4,66	

CX250C Standard arm 3 m, 1.0 m<sup>3</sup> bucket (790 kg) bucket, 600 mm shoes, max reach 9.90 m

9.0 m									2240*	2240*			2120*	2120*	7,57
7.5 m									3300*	3300*			1890*	1890*	8,85
6.0 m									4330*	4330*	3480*	3270	1790*	1790*	9,68
4.5 m									5110*	4510	4290*	3200	1770*	1770*	10,18
3.0 m					8700*	8700*	6850*	6250	5800*	4290	4670	3080	1810*	1810*	10,41
1.5 m			13410*	13410*	11110*	9250	8110*	5860	6170	4060	4530	2950	1910*	1910*	10,4
0 m	4270*	4270*	9700*	9700*	12710*	8590	8580	5500	5950	3860	4410	2840	2100*	2100*	10,16
-1.5 m	7650*	7650*	11290*	11290*	13240*	8290	8330	5290	5810	3730	4350	2780	2400*	2400*	9,68
-3.0 m	9810*	9810*	14490*	14490*	13060*	8310	8300	5270	5810	3740			2900*	2840	8,94
-4.5 m	14320*	14320*	17920*	17210	12140*	8490	8390	5420	5930	3910			3860*	3550	7,86
-6.0 m			14120*	14120*	9730*	8720	6580*	5620					5760*	5150	6,3

\* Lift capacities are taken in accordance with SAE J1097 / ISO 10567 / DIN 15019-2

Lift capacities shown in kg do not exceed 75% of the tipping load or 87% of the hydraulic lift capacity

Capacities that are marked with an asterisk (\*) are hydraulic limited

If the machine is equipped with a quick coupler, subtract the weight of the quick coupler from the load shown in the table to calculate the real lift capacity

## STANDARD EQUIPMENT

### ENGINE

Isuzu 4-cylinder turbo-charged diesel  
Tier III  
Electronic fuel injection  
High pressure common rail system  
Neutral safety start  
Auto-engine warm up, emergency stop  
Glow-plug pre-heat  
EPF (Engine Protection Feature)  
Dual-stage fuel filtration  
Dual element air filter  
Remote oil filter  
Green plug oil drain  
500-hour engine oil change interval  
24-Volt system  
Battery disconnect switch  
High ambient temperature cooling package  
Fuel cooler  
Fuel filter restriction indicator  
Idle start  
Radiator, oil cooler, intercooler  
Refueling Pump  
**FUEL ECONOMY SYSTEMS**  
Engine Idle/Fuel Economy System:  
Auto-idle  
One-touch idle  
Auto-idle shut-down  
Torque control  
Boom Economy Control (BEC)

Swing Relief Control (SWC)  
Spool Stroke Control (SSC)  
**HYDRAULICS**  
Auto power boost  
Auto travel speed change  
Selectable work modes  
Pre-set auxiliary pump settings  
Switch controlled auxiliary selection  
Hydraulic filter restriction indicator  
Oil cooler  
5,000 hour hydraulic oil change interval  
2,000 hour hydraulic filter change interval  
**UPPERSTRUCTURE**  
ISO mirrors  
Handrail – RH access  
ISO guard rails  
Isolation mounted cab (4 point fluid mounting)  
Lifting eyes for counterweight  
Lockable fuel cap, service doors and toolbox  
Rear and side view safety camera  
**UNDERCARRIAGE**  
600 mm steel triple grouser shoes  
LC type (Long Carriage) undercarriage  
Sealed link chain  
Travel alarm  
**ATTACHMENTS**  
HD Monoboomb  
HD Arm  
HD bucket linkage

Boom mounted work light  
Auxiliary pipe brackets  
Centralised lube bank  
Attachment cushion valve  
**OPERATOR STATION**  
Pressurised cab  
Safety glasses for all windows  
Sun visor&rain deflector  
AC/heat/defrost w/auto climate control  
Hot&coolbox, cup holder & ashtray  
Cloth covered air-suspension seat fully adjustable and reclinable  
Adjustable armrests  
Tilting consoles - 4-position  
Low-effort joystick controls  
Sliding cockpit  
Auxiliary select system  
Multifunction LCD color monitor  
Anti-theft system (start code system)  
Rubber floor mat  
12 V electric socket /24 Vcigarette lighter  
One-piece right hand window  
Internal & external view mirrors  
Working lights (boom&upperstructure)  
Cab top working lights  
Windshield wiper / washer  
Storage compartments  
On-board diagnostic system

## OPTIONAL EQUIPMENT

### HYDRAULICS

Clamshell circuit/Low-flow circuit  
Single/Double acting multifunction auxiliary circuit - pedal activated (hammer/high flow)  
Single acting pedal activated hammer circuit

### ATTACHMENTS

Hydraulic quick coupler provision  
Safety valves and HD bucket linkage with hook  
Overload warning device  
**UNDERCARRIAGE**  
700 / 800 mm steel shoes

### OPERATOR STATION

FOPS level II  
Front cab guard - vertical bars (OPG level 2)  
Front cab guard - vertical bars (OPG level 1)  
Front mesh screen  
AM/FM CD/radio with antenna and 2-speakers



# BUILDING A STRONG CASE.

Since 1842, at CASE Construction Equipment we have lived by an unwavering commitment to build practical, intuitive solutions that deliver both efficiency and productivity.

We continually strive to make it easier for our customers to implement emerging technologies and new compliance mandates.

Today, our global scale combined with our local expertise enables us to keep customers' real-world challenges at the center of our product development.

The vast CASE dealers' network is always ready to support and protect your investment and exceed your expectations, while also providing you with the ultimate ownership experience.

Our goal is to build both stronger machines—and stronger communities. At the end of the day, we do what's right for our customers and our communities so that they can count on CASE.

[CASECE.com](http://CASECE.com)

NOTE: Standard and optional fittings can vary according to the demands and specific regulations of each country. The illustrations may include optional rather than standard fittings - consult your CASE dealer. Furthermore, CNH Industrial reserves the right to modify machine specifications without incurring any obligation relating to such changes.

Conforms to directive 2006/42/EC

