

# SPECIAL FORCES.

THE STEYR **ORANGE** SERIES FROM 58 TO 300 HP.



**STEYR**  
TRAKTOREN

Your partner to rely on.

**YOUR PARTNER TO RELY ON  
WHEN YOU NEED TO TACKLE  
ANY TASK AT  
YOUR BEST.**



MUNICIPAL



FORESTRY



GROUND  
CARE



INDUSTRY



## **CONTENTS**

**04–05 MUNICIPAL**

**06–07 FORESTRY**

**08–09 GROUND CARE**

**10–11 INDUSTRY**

**12–13 TERRUS CVT**

**14–15 CVT**

**16–17 PROFI**

**18–19 MULTI**

**20–21 KOMPAKT**

**22–23 KOMFORT**

**24–25 ENGINES**

**26–27 CVT TRANSMISSION**

**28–29 S-FLEET TELEMATICS SOLUTIONS**

**30–31 STEYR MUNICIPAL CHASSIS**

**32–33 SF AND SZ FRONT LOADERS**

**34–35 SPECIAL EQUIPMENT**

**36–37 DEALERS AND SERVICE**

**38 MAINTENANCE**

**39–41 TECHNICAL DATA**

# ECONOMY ON FOUR WHEELS: MUNICIPAL-TRACTORS FROM STEYR.

Our STEYR tractors are the perfect work machine for use in the municipal sector, in winter operation, road maintenance and road cleaning. They provide the maximum level of reliability, comfort and efficiency. There is a choice of eight models: the flexible Kompakt S, the versatile Kompakt, the universal Multi, the remarkably economical PROFI Classic, the innovative PROFI, the continuously variable PROFI CVT and our flagships, CVT and Terrus CVT



## MUNICIPAL

### WINTER OPERATION

Snowplough, rotary snow plough, gritter

### ROAD MAINTENANCE

Greenery/verge mower,  
Hedge shears/branch trimmer

### CLEANING

Road-sweeper, weed brush  
Washing brush

### WATER SUPPLY

Mowing/mulching device with boom arm, ditch clearing  
implements, flail mower

TERRUS CVT

CVT

PROFI CVT

PROFI

PROFI  
CLASSIC

MULTI

KOMPAKT

KOMPAKT S



- Comfort with a capital 'C': windscreen, rear window and rear-view mirrors with the option of heating, engine and transmission preheating, and a LED signal light bar.
- Municipal frame with EURO III system - Robust front attachment area for safe and versatile attachment of front-mounted equipment.
- Combinations of tyres and wheels to suit all applications.







# FORST CLASS: FORESTRY TRACTORS FROM STEYR.

Forestry is a heavy burden for tractors. STEYR offers you a wide range of models, engine power and transmission variants to help you get the job done. And the best: Unlike other dedicated machines, our tractors are universal.

**FULL PROTECTION OF THE FOREST.** For the special requirements of forests, STEYR offers a comprehensive range of additional, customizable equipment for the tractor series from 75 to 300 HP.

- Robust forestry frame with branch guard in 4- or 6-column design.
- Protective grille in the roof area and in front of the rear window.
- Shatter-proof Makrolon rear window for Kompakt and Multi series.
- Protective rear window grille for PROFI, CVT and Terrus CVT series.
- Solid floor plate and side panels for protection of the engine, gear box, rear axle, fuel and hydraulic tank.
- Removable rear-view mirror, adjustable exit steps.
- Robust forestry tires with reinforced forest rims with valve protection.
- STEYR Multi: contour frame for better protection and perfect all-round visibility.



## FORESTRY

	TERRUS CVT	CVT	PROFI CVT	PROFI	PROFI CLASSIC	MULTI	KOMPAKT
<b>HANDLING SHORT AND LONG SECTIONS OF TIMBER</b> Cable winch, forwarder		■	■	■	■	■	■
<b>TRANSPORT &amp; LOADING</b> Garbage loader, Crane, Trailer		■	■	■	■	■	■
<b>HEDGE/TIMBER CARE</b> Forest mulcher, hedge trimmer, Bush cutter		■	■	■	■	■	
<b>WOOD-CHIPPER</b> Operating and loading of wood-chipper machine	■	■					

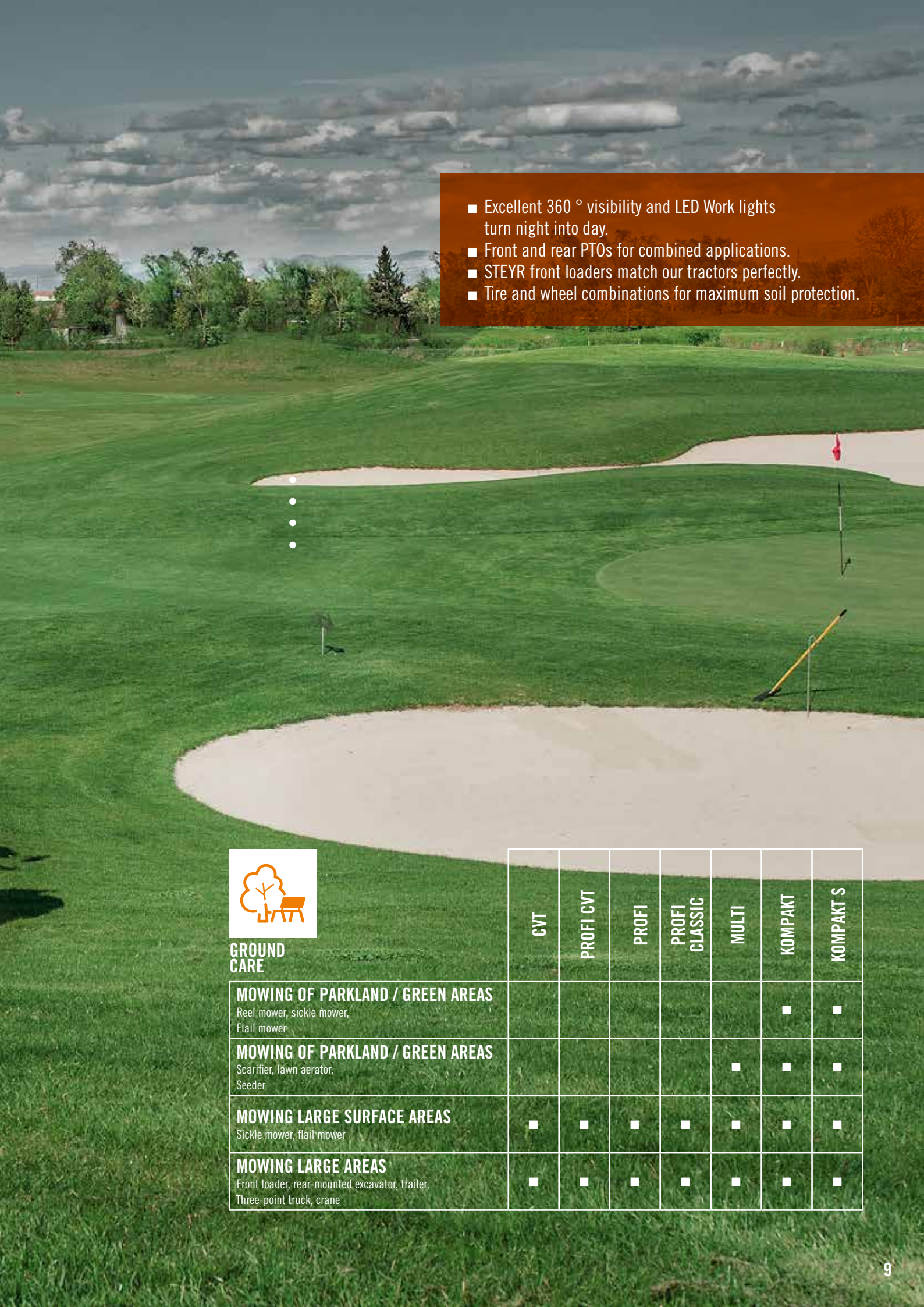
# THE GROUND CARE SPECIALISTS FROM STEYR FOR PARKLAND AND GREEN AREAS.

In the field of landscape management, STEYR tractors are used primarily for the care and mowing of parks and plant areas. Thanks to front and rear PTOs, you can operate up to 3 mowers at the same time, allowing you to mow large areas with maximum efficiency. The STEYR tractor is particularly recommended for horticulture, as it can also be fitted with a suitable front loader. This makes our tractors even more universally versatile and suitable for performing a variety of tasks quickly.

**SOIL FRIENDLY.** The wide turf tires of the tractors offer a wide, flat tread, thus giving them excellent load distribution. The weight of the tractor is evenly distributed on the ground, thereby avoiding deep tread marks and less compacting of the ground.







- Excellent 360 ° visibility and LED Work lights turn night into day.
- Front and rear PTOs for combined applications.
- STEYR front loaders match our tractors perfectly.
- Tire and wheel combinations for maximum soil protection.

- 
- 
- 
- 



**GROUND CARE**

	CVT	PROFI CVT	PROFI	PROFI CLASSIC	MULTI	KOMPAKT	KOMPAKT S
<b>MOWING OF PARKLAND / GREEN AREAS</b> Reel mower, sickle mower, Flail mower						■	■
<b>MOWING OF PARKLAND / GREEN AREAS</b> Scarifier, lawn aerator, Seeder					■	■	■
<b>MOWING LARGE SURFACE AREAS</b> Sickle mower, flail mower	■	■	■	■	■	■	■
<b>MOWING LARGE AREAS</b> Front loader, rear-mounted excavator, trailer, Three-point truck, crane	■	■	■	■	■	■	■

# RUGGED: INDUSTRIAL-TRACTORS FROM STEYR.

Transportation, industrial assembly, material handling, water, sewage construction, drilling and other special tasks: The benefits of the rugged STEYR tractor stand out in the construction industry. The powerful and reliable engines with modern transmission technology are the hallmarks of our tractor - ideal for use on the construction site.

**ALL-TERRAIN.** Wherever a large, robust tractor is required, you will find a STEYR. This is why people appreciate the power and reliability of the Terrus CVT. In addition to their high off-road capabilities, STEYR tractors score highly in the construction sector due to their fast set-up and turning times in transport chains and their flexible application possibilities.

Attached to a dump truck, for example, the tractors are highly efficient and very cost-effective. Our tractors are also ideal for use with graders, stone crushers or special milling equipment.

- High off-road capability
- Fast set-up times
- Flexible use as a tractor
- S-Fleet telematics solutions increase productivity and ensures optimal organization of the vehicle fleet



## INDUSTRY

	TERRUS CVT	CVT	PROFI CVT	PROFI	PROFI CLASSIC	MULTI
<b>TRANSPORT</b> Low-loader, tipper	■	■	■	■	■	■
<b>INDUSTRIAL INSTALLATIONS</b> Load cranes, front loader, trailer	■	■	■	■	■	■
<b>MATERIALS HANDLING</b> Front-mounted wheeled hopper, front loader	■	■	■	■	■	
<b>CONSTRUCTION</b> Tipper truck, bulldozer blade	■	■	■			







**MACHINE  
OF THE YEAR 2016**



**STEYR 6300 TERRUS CVT**

**PowerMix**

DLG Test Report 6298

**PROVEN EFFICIENCY.** As shown in independent tests conducted by DLG (Deutsche Landwirtschafts-Gesellschaft), the Terrus CVT is incredibly efficient, boasting fuel consumption of just 249 g/kWh in the DLG PowerMix!

# STRONG, STRONGER, TERRUS CVT.

**Our STEYR engineers have performed the remarkable feat of building an incredibly high-performance tractor - The Terrus CVT - Terrus CVT, the most powerful STEYR of all time.**

It comes in three models, boasting ultra-efficient, reliable ECOTECH engines, in a choice of 250 hp or 300 hp. Its ideal power-to-weight ratio makes the Terrus CVT the ideal tractor for fast transporting jobs and heavy-duty field work. But that is not all; our most powerful tractor also boasts exceptional levels of comfort. Its spring-mounted front axle combined with a luxurious and remarkably quiet cabin make work comfortable and fatigue-free.

Terrus CVT: The modern to drive a tractor. All models boast a highly-responsive steering system and high payloads, which extend up to 6,300 kg. They are all fitted with wet dual disk brakes (4 disk brakes on the rear axle). Since these HD wet disc brakes are more resistant to wear in heavy-duty transport situations, the brakes deliver a longer service life. This optimum relationship between all components ensures a unique, new-generation, driving experience.





# STANDS UP TO ANY CHALLENGE.

Whether working under the harshest of winter conditions, engaging in the most arduous of road maintenance operations or the power-sapping recovery of bio energy, or, indeed, undertaking heavy-duty, special-purpose transport operations, the STEYR CVT is the tractor you need. Its powerful range of 6-cylinder, intercooled turbo diesel engines can deliver between 150 and 240 hp. Also, its S-TRONIC management system means that engine, transmission and all moving components can be networked and coordinated. Our CVT is incredibly versatile and comfortable to operate.

You can choose from a range of seven models. Its outstanding transmission design ensures excellent performance, hence the name of the range: CVT stands for Continuously Variable Transmission because its gearbox has a continuously variable ratio. The ECOTECH engine concept, with its environmentally friendly Hi-eSCR 6.7 L turbo diesel system with intercooling and Common Rail injection, comply with EU emission level IV, thus ensuring sustainable cost-effectiveness.







# UNCOMPROMISING.

Providing efficiency and versatility with a fresh design look, our STEYR PROFÍ series excels in winter work, road maintenance, heavy-duty transport and also when operating as a front loader. The PROFÍ Series provides optimum safety and convenience.

There is a choice of three versions, in 15 different models, ranging from 116 hp to 145 hp. The entry-level version is the PROFÍ Classic series, with mechanical control units, constant-displacement hydraulic pump and a high roof in its standard version. It offers an excellent level of functionality. The new PROFÍ models now feature an 8-speed Powershift transmission with 24 x 24 gears, and are equipped with a Multi-controller armrest. The innovative PROFÍ CVT with S-Control™ CVT transmission and ISOBUS III provides an optimum level of comfort and refinement.

The STEYR ECOTECH engine is common to all models. Thanks to the environmentally-friendly Hi-eSCR system on the 4.5 litre (4-cylinder) and 6.7 litre (6-cylinder) turbo diesel engines with intercooling and common-rail fuel injection, the tractors effortlessly meet Level IV EU exhaust emission standards, therefore guaranteeing long-term cost-efficiency.



**MACHINE  
OF THE YEAR 2018**



# MULTIFUNCTIONAL.

**Flexibility made in Austria. Our STEYR Multi models simply respond to every need: Powerful torque, fuel-efficient engines and the 4-stage powershift automatic transmission, make them genuine all-rounders. They have a convincingly low centre of gravity coupled with excellent manoeuvrability on any terrain.**

Our universal STEYR Multi models can satisfy all your tractor requirements. They provide superb all-round visibility, with optimum safety and convenience. These tractors are ideally suited to use in the municipal and forestry sectors and for landscaping. Working on difficult terrain is no problem for the Multi. Despite weighing only 4.5 tons, it is powerful enough to operate front loading systems or cabinle winches and for driving a wide range of equipment, even under harsh winter conditions.





# THE COMPACT.

**Our STEYR Kompakt models are economical, manoeuvrable and easy to operate. They represent many decades of experience. The spacious cabin, with excellent visibility and ergonomic design, comes straight from our larger STEYR tractors.**

The Kompakt class from STEYR is revolutionising the meaning of cost-benefits. Equipped with the proven technology of its larger brothers, these models are ideally suited to a host of purposes. Their 58 hp to 114 hp engines coupled with a superlative power-to-weight ratio guarantee optimum efficiency. Their unique manoeuvrability also makes the Kompakt the perfect workhorse for municipal, commercial or forestry work. They combine great versatility with low investment and operating costs.



# THE BENEFITS OF IMPROVED COMFORT.

All models offer a spacious, comfortable cabin with a flat floor that can easily be accessed from either side, thus satisfying all the requirements for an optimum working environment. The ergonomics of the control panel, comfortable driver and passenger seats, excellent acoustic insulation and an equally efficient ventilation and air-conditioning system all make for perfect working conditions. The cabin offers perfect all-round visibility, as does the roof window fitted with a sun roller blind.

**ERGONOMIC MULTICONTROLLER.** A Multicontroller lever is available for every STEYR model. For easy of use, the Multicontroller is positioned on a separate console (Kompakt and Multi) or on the Multicontroller armrest (Profi, Profi CVT, CVT and Terrus CVT) near the driver's seat. As well as operating the transmission the Multicontroller houses the operation of the electrical clutch (Kompakt and Multi) and the Powershuttle for reversing the direction of travel. The controller can

also raise and lower the rear hitch, while the shift key can raise and lower the optional front hitch.

**OPTIMUM WORKING ENVIRONMENT** The air distribution system regulates heating, cooling and ventilation, thus assuring a constant, comfortable cabin working environment. The windows are prevented from misting up in any weather or ambient temperature. Efficient acoustic insulation makes the cabin a pleasant environment to work in.

**COMFORT AND SAFETY** The cabin offers outstanding seating comfort. Even after a long working day, your back and lumbar region will scarcely feel the strain. The high visibility sun roof has integrated solar protection, thus making operation of the front loader convenient and safe. When needed, the powerful LED Work light system with roof-mounted headlights can turn night into day, enabling the STEYR tractor to be used even poor lighting conditions.



- 1 Everything in sight and under control. In the Kompakt cabin, as well as in the...
- 2 ... Multi cabin with Multicontroller armrest and also...
- 3 ... with the most advanced Multicontroller armrest with intuitive control panel and S-Tech 700 touchscreen monitor (PROFI CVT, CVT and Terrus CVT models).



### COMFORT CABIN:

- Low noise levels helps concentration.
- PROFI models come in low-roof or high-roof comfort cabin versions.
- Cabin and front axle suspension for added comfort on PROFI, CVT and Terrus CVT models.
- Various seat options, with a choice of fabric or leather upholstery.
- Heated front and rear window for winter use.
- Air-conditioning unit, with the option of auto climate control for PROFI, CVT and Terrus CVT Series.
- Hi-fi stereo sound system with Bluetooth hands-free unit.



### ECOTECH AT A GLANCE

- 4 and 6-cylinder engines with turbocharger and intercooler.
- Powerful engines from 58 hp up to 300 hp.
- Hi-eSCR exhaust technology: highly efficient SCR (selective catalytic reduction) system above 120 hp.
- Long service intervals (600 operating hours) for the engine.
- High maximum engine torque.
- EU exhaust standard, stage IV.
- S-TRONIC engine/transmission management on the PROFI CVT, CVT and Terrus CVT models.
- Individual adaptation of driving mode.
- Engine back-pressure brake.





# MORE POWER, LESS FUEL.

The electronically controlled diesel engines effortlessly handle demanding jobs even at low engine speeds. The STEYR tractor range today covers a nominal power range of 58 hp to 300 hp.

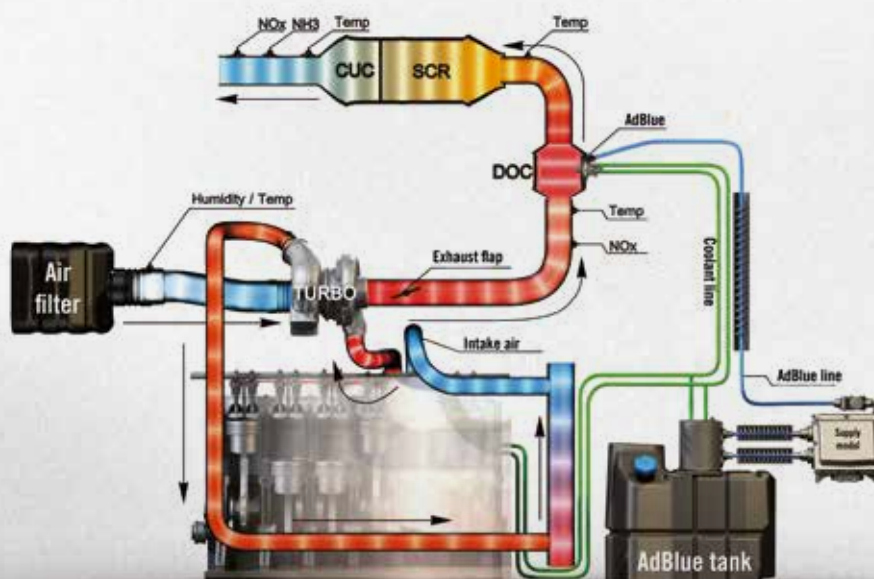


**Top-class engine technology.** Intelligent use of power. Thanks to ECOTECH technology, the all engine models rank among the best in their class. Profitability, productivity, environmentally friendly and ultra-modern energy management all working in perfect symbiosis. The unique Hi-eSCR treatment system optimises fuel consumption and improves power and engine responsiveness for all PROFI, CVT and Terrus CVT models. As exhaust fumes recirculation is not required, there is no negative impact on the engine or cooling system. Therefore, servicing can be done at 600-hour intervals, beating all competition. The system also requires no particle filters, therefore reducing maintenance costs.

**Always enough reserves with Power Plus.** The Power Plus engine management system boosts power during transportation, PTO and hydraulic operations. When Power Plus is operational, it provides 45 hp more engine power. PowerPlus is also available for PTO work while reversing, for example with a reversing unit.



The STEYR 4145 PROFI with S-Control™ 8 transmission offers specific fuel consumption as low as 258 g/kWh - the most fuel-efficient in its class in the DLG PowerMix test.



### NEW GENERATION OF DRIVE UNIT

- Continuously variable from 0 to 50kph.
- Active stationary control.
- DKT – double-clutch technology.
- S-TRONIC engine-transmission management.
- 50kph at 1,700 rpm for optimised fuel consumption.



# SMOOTH WAY TO SUCCESS.

Everything just runs smoothly with **Continuously Variable Transmission (CVT)**. An intelligent interplay of hydraulic and mechanical components ensures **cost-effectiveness compromising power**. The **continuously variable ratio enables you to tackle every conceivable task effortlessly**.

**High mechanical efficiency rating.** The CVT transmission delivers a high proportion of mechanical propulsion. This robust transmission unit with double-clutch technology provides outstanding power transmission without interruption to traction. It also provides excellent acceleration. The CVT control logic delivers the right transmission required. S-TRONIC controls the transmission ratio and engine speed to suit power requirements and automatically assures optimum fuel efficiency. This design principle optimises engine power.

**Active stationary control.** The active stationary control is a clear safety benefit. It can keep the tractor and its towed load stationary, even on steep gradients. It also makes it possible to resume movement effortlessly without the need to operate clutch and brake.

**Gently aggressive.** There are three 'transmission aggressiveness' settings for the accelerator pedal and Multicontroller. This alters the acceleration characteristics as well as the unpowered rolling characteristics of the PROFI CVT, CVT and Terrus CVT. The transport setting allows for smooth change of direction - ideal for high-speed transport operations and for operations on slippery ground. Together with the tractor-trailer brake, this improves safety when slowing down, thus preventing the trailer from shunting into the tractor. The "standard" setting is intended for normal field activities. The 'aggressive' setting is specifically intended for heavy-duty field work and for operations involving a front loader. It delivers direct and rapid changes of direction.



Continuously variable from 0 to 50kph



DKT – double-clutch technology





# SIMPLY CLEVER: OUR TELEMATICS SOLUTIONS.

**Fleet Management.** With fleet management, you can locate your machinery and - via an optional feature - your team, all from a single website. This allows you to pinpoint the exact location of any machine. Machine logistics can also manage maintenance and tank filling operations. This leaves your employees to be productive and helps with seamless operation of your machinery.

**STEYR S-FLEET telematics.** This system enables you to call up real-time operational data on your machine using your mobile phone. Thus allowing fleet managers to stay in touch with their machines and drivers and to send and receive real-time data. This saves time and boosts productivity.

**S-FLEET Basic.** Protect your investments and rationalise maintenance by using the S-FLEET Basic Alarm and burglar alarm systems. Geofencing ensures that a machine remains within defined coordinates. The Curfew Management system sends an alarm whenever a machine starts up after the end of business. S-FLEET Basic is compatible with existing Precision Farming systems, meaning that your regional STEYR retail dealer can retrofit the system in your vehicle fleet. S-FLEET Basic can be used with all devices that use the ISO J1939 CAN standard protocol.

**S-FLEET Advanced.** Includes all features of S-FLEET Basic plus a few important optional functions. Including:

- **Two-way messaging** so that the manager can select what machines to send information to. Messages appear immediately on the display of the machines for the driver to confirm.
- **Virtual display** so that the manager can view the screen display of every machine on a computer. A wide range of work data and parameter values can be monitored, e.g. the surface area being worked on, the number of operating hours and fuel consumption.

**STEYR MUNICIPAL FRAME WITH EURO III SYSTEM ADAPTER:**

- Modular layout with integrated tow coupling and removable straps for swivel screw connections.
- Robust design, protection against torsional forces.
- Up to 6 hydraulic connections.
- Can be combined with front loader.
- Optional transfer transmission, 3-point front hydraulics and front axle support with level control.



# EQUIPMENT UPGRADES.

Our many years of experience and close cooperation with attachment manufacturers enable us to offer optimum and individual solutions for use throughout the year. Snow-clearing, road maintenance, care of public areas, sports facilities, parkland, forestry work and building site operations – with just one STEYR tractor, all of these tasks can be performed simply and efficiently.

**HIGHLY UPGRADEABLE.** Our municipal frame with EURO III system adapter now features an improved design principle and is extremely stable. Attachments with big boom widths and high torque moments can be easily operated without in great safety. The standard interface keeps set-up times to a minimum for a vast array of municipal attachments. The EURO III system adapter plate is easy and convenient to fit to a front-mounted hydraulic system. This also enables front-mounted implements to be operated with a 3-point attachment.



# GREAT FRONT STRUCTURE.

The STEYR SF and SZ front loaders are perfectly designed for use with our Steyr models. They represent ultimate precision, rapid response features and are remarkably easy to handle. This adds a significant boost to productivity.

All models supplied ex-factory for operation with front loaders are equipped with the necessary installation spaces and hydraulic lines. However, it is also possible to retrofit all of our tractors with an SF or SZ loader.

**CONVENIENT OPERATION.** All necessary couplings are already factory-fitted. It is easy and convenient to operate the front loader via the joystick integrated into the armrest.

**EQUIPPED FOR ANY AND EVERY TASK.** Even in very confined spaces, e.g. in a farmyard or in a forest, reversing or going forward with a front loader is very easy. Quick Turn and Powershuttle also help to improve the manoeuvrability of PROFI and CVT. The loader can be connected to or disconnected from the tractors with effortless ease. The hydraulic connections are arranged on a central, easily accessible distributor. This enables the loader to be mounted and removed in seconds.



1 Joystick for front loader work on the PROFI, PROFI CVT and CVT

2 Front loader joystick on the Multi

3 Front loader 3720 SF for Multi series

4 Adaptive Steering Control reduces the number of steering wheel turns required





## AN UPLIFTING FEELING

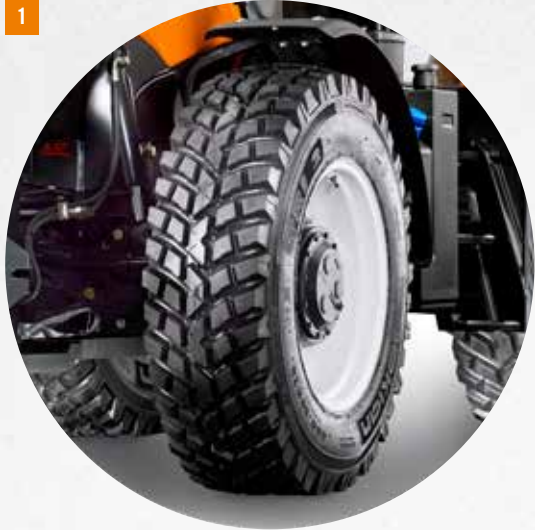
- Wide loader support frame and quick-release adapter plate to simplify mounting a front loader attachment.
- Optional ex-factory preparation for front loader attachment.
- 2 optional electronic central control units.
- Intuitive control via joystick in armrest.
- Perfect visibility to the front and to the top.
- Adaptive steering control for faster turns on PROFI, PROFI CVT and CVT models.



FRONT LOADER MODELS	Max. lifting capacity (kg)	Max. lifting height for linkage pivot point (mm)	Vertical access loading height for shovel blade parallel/tilted (mm) / (mm)	Tractor minimum / maximum power (HP)
<b>3720 SF*</b>	2,115	3,750	3,350 / 2,720	90 / 120
<b>15 SZ</b>	2,540	3,740	3,530 / 2,690	70 / 110
<b>30 SZ</b>	2,300	4,070	3,860 / 3,010	90 / 120
<b>35 SZ</b>	2,640	4,070	3,860 / 3,010	90 / 140
<b>50 SZ</b>	2,800	4,260	4,050 / 3,210	120 / 180

\* STEYR 3720 SF only available for STEYR MULTI

1



2



3



4



5



6





## TOP CLASS OPTIONS.

For the specialist requirements of forestry work, STEYR offers a range of made-to-measure auxiliary equipment items. These range from a specialist forestry frame with branch deflector and protective guards for axles, engine and transmission, to Work lights and additional headlights to provide optimum illumination. To improve manoeuvrability, STEYR forestry tractors can be equipped with front loaders and a shorter swinging link, and special tyres with reinforced forestry rims and valve protection.



### AN OVERVIEW OF SELECTED EQUIPMENT OPTIONS:

- 1 NOKIAN TRI2 Municipal tyres
- 2 NOKIAN forestry tyres with reinforced forestry rims and valve protection
- 3 Individual special tyres are also possible\*
- 4 Municipal signal beam, heated front and rear windows, heated exterior mirrors
- 5 Reversible seat\* and reversing equipment\*
- 6 Various special-purpose attachments, e.g. branch shears\*



\* Your dealer will be pleased to advise you.



# STEYR SERVICE IS ALWAYS THERE FOR YOU.

## ALL-ROUND PROTECTION WITH STEYR PREMIUM SERVICE.

Safe operation with no downtime periods. With STEYR Premium Service you can call on expert help seven days a week, right around the clock. Our 24-hour emergency service provides you with specialist support, products and spare parts, and can be reached on the freefone / toll-free number 00800 7839 7000.



**FINANCING MADE EASY: CNH INDUSTRIAL CAPITAL.** An expert partner is essential when you are financing your STEYR tractor. We recommend CNH Industrial Capital. This agricultural and construction vehicle financing expert can offer you a range of services – from individually tailored loans to leasing and rental offers. CNH Industrial Capital endeavours to find the financing option best suited to your new investments, the requirements of your farm and your financial position.

## OPTIMUM PROTECTION HAS A NAME: STEYR PROTECT.

STEYR PROTECT is a combination of service and warranty services that gives you peace of mind and saves you money. STEYR PROTECT can be tailored precisely to suit your wishes and needs, and helps you to remain genuinely productive longer.

STEYR PROTECT protects you from high repair costs, it assures you of fixed maintenance costs for up to 5,000 operating hours, and it provides you with total protection for up to five years. There is a choice of three protection packages\*: STEYR PROTECT Gold, Silver and Bronze.

**GOOD SERVICE IS CLOSE BY - YOUR LOCAL STEYR DEALER.** Our tractors are designed for thousands of hours of hard work and are remarkably easy to maintain and service. You can obtain all the spare parts and service support you need from your STEYR dealer. Your local dealer is also your first point of contact for maintenance and warranty support.



## STEYR GENUINE PARTS:

- 12 months of warranty
  - 24-hour delivery + support from technical specialists
  - Best price-performance ratio throughout the year
- Our genuine parts are manufactured by our engineers to precise specifications, and are subject to stringent quality control to ensure that your vehicles deliver optimum performance. The installation of genuine parts ensures that all the carefully matched mechanical components operate flawlessly. You can obtain genuine parts directly from your STEYR dealer.

## /// STEYR PROTECT GOLD

- Maintenance contract
- Extended warranty
- Comprehensive insurance

## /// STEYR PROTECT SILVER

- Maintenance contract
- Extended warranty

## /// STEYR PROTECT BRONZE

- Maintenance contract

# MAINTENANCE MADE EASY.



Easy tank filling.



Effortless inspection of vee belt.



Oil level check and top up without lifting the bonnet



Continuous cleaning via a Piclon filter ensures that the filter only needs to be maintained when the corresponding warning lamp lights up.



One-section bonnet support by gas struts can be lifted into two positions (45°/90°), even with a front-mounted attachment.

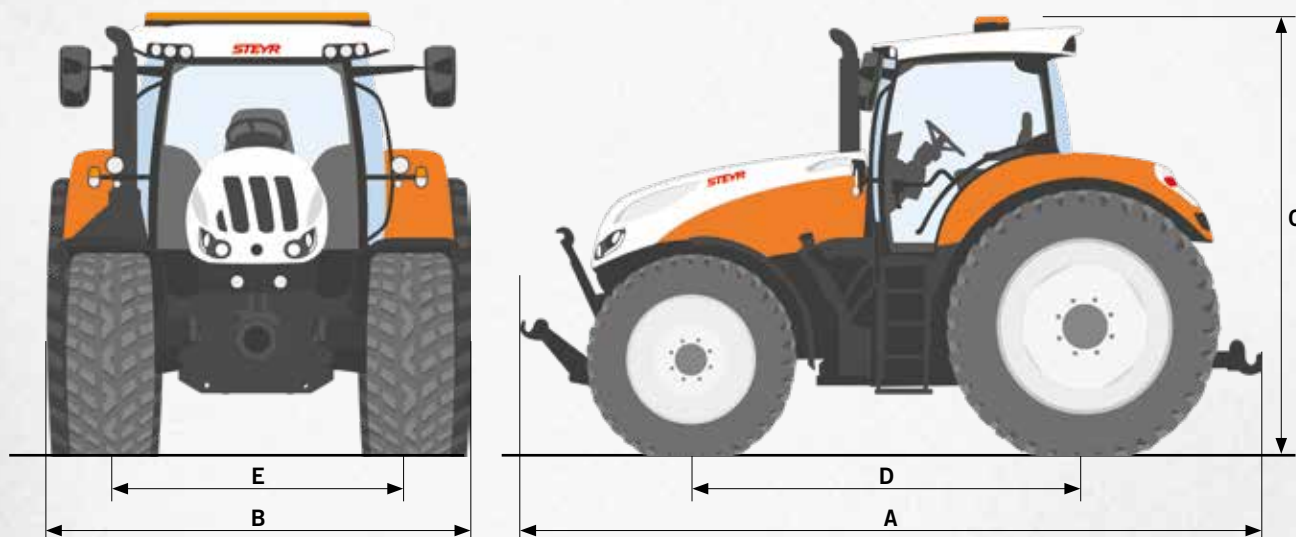


Fast and simple cleaning of the radiator and air-conditioning system.



# MEASUREMENTS.

## DIMENSIONS: MODEL-SPECIFIC



DIMENSIONS <sup>1)</sup>	TERRUS CVT	
A Max. length / B Min. width / C total height [mm]	4,031 / 1,922 / 2,594	
D Wheelbase [mm] / E Track width front [mm] rear [mm]	2,132 1,545 – 1,945 1,327 – 1,930	
DIMENSIONS <sup>1)</sup>	6150 CVT - 6175 CVT	6185 CVT - 6240 CVT
A Max. length / B Min. width / C total height [mm]	5,316 / 2,476 / 3,026	5,467 / 2,476 / 3,068
D Wheelbase [mm] / E Track width front [mm] rear [mm]	2,789 1,325 – 2,285 1,430 – 2,230	2,884 1,538 – 2,260 1,530 – 2,230
DIMENSIONS <sup>1)</sup>	PROFI CVT / PROFI / PROFI CLASSIC	
A Max. length / B Min. width / C total height [mm]	4,556 / 2,470 / 3,025	
D Wheelbase [mm] / E Track width front [mm] rear [mm]	2,684 1,580 – 2,256 1,430 – 2,134	
DIMENSIONS <sup>1)</sup>	MULTI	
A Max. length / B Min. width / C total height [mm]	4,403 / 2,100 / 2,725	
D Wheelbase [mm] / E Track width front [mm] rear [mm]	2,420 1,752 1,630	
DIMENSIONS <sup>1)</sup>	KOMPAKT	
A Max. length / B Min. width / C total height [mm]	4,241 / 1,923 / 2,594	
D Wheelbase [mm] / E Track width front [mm] rear [mm]	2,235 1,440-1,948 1,411-1,937	
DIMENSIONS <sup>1)</sup>	KOMPAKT S	
A Max. length / B Min. width / C total height [mm]	4,031 / 1,922 / 2,594	
D Wheelbase [mm] / E Track width front [mm] rear [mm]	2,132 1,545-1,945 1,327-1930	

<sup>1)</sup> with standard tyres

MODEL	ENGINE					TRANSMISSION*
	Cylinder/cubic cc [cm <sup>3</sup> ]	Rated power ECE R120 <sup>1)</sup> with Power Plus <sup>2)</sup> [kW/hp] at engine speed [rpm]	Rated power ECE R120 <sup>1)</sup> [with Power Plus <sup>2)</sup> ] [kW/hp] at engine speed [rpm]	Max. torque / at engine speed [Nm / rpm]	Fuel tank diesel standard (optional) / AdBlue [l]	
<b>6300 TERRUS CVT</b>	6 / 6,728	—	221 / 300 2,100	1,282 / 1,400	630 (-) / 96	Continuously Variable Transmission 0-50 km/h ECO or 40 km/ECO
<b>6270 TERRUS CVT</b>	6 / 6,728	—	199 / 271 2,100	1,194 / 1,400	630 (-) / 96	
<b>6250 TERRUS CVT</b>	6 / 6,728	—	184 / 250 2,100	1,173 / 1,400	410 (-) / 96	
<b>6240 CVT</b>	6 / 6,728	192 / 260 2,200	177 / 240 2,200	1,100 / 1,500	390 (-) / 48	Continuously Variable Transmission 0-50 km/h ECO or 40 km/ECO
<b>6220 CVT</b>	6 / 6,728	177 / 240 2,200	162 / 220 2,200	1,000 / 1,500	390 (-) / 48	
<b>6200 CVT</b>	6 / 6,728	165 / 225 2,200	147 / 200 2,200	930 / 1,500	390 (-) / 48	
<b>6185 CVT</b>	6 / 6,728	151 / 205 2,200	132 / 180 2,200	840 / 1,500	390 (-) / 48	
<b>6175 CVT</b>	6 / 6,728	151 / 205 2,200	132 / 180 2,200	770 / 1,500	330 (-) / 48	
<b>6165 CVT</b>	6 / 6,728	140 / 190 2,200	121 / 165 2,200	770 / 1,500	330 (-) / 48	
<b>6150 CVT</b>	6 / 6,728	129 / 175 2,200	110 / 150 2,200	700 / 1,500	330 (-) / 48	
<b>6145 PROFI CVT</b>	6 / 6,728	121 / 165 2,200	107 / 145 2,200	650 / 1,500	210 (250) / 39.5	<b>S-Control™ CVT</b> Continuously Variable Transmission 0-50 km/h ECO or 40 km/ECO
<b>4145 PROFI CVT</b>	4 / 4,485	118 / 160 2,200	107 / 145 2,200	650 / 1,500	210 (250) / 39.5	
<b>4135 PROFI CVT</b>	4 / 4,485	114 / 155 2,200	99 / 135 2,200	605 / 1,500	210 (250) / 39.5	
<b>4125 PROFI CVT</b>	4 / 4,485	103 / 140 2,200	92 / 125 2,200	560 / 1,500	210 (250) / 39.5	
<b>4115 PROFI CVT</b>	4 / 4,485	96 / 131 2,200	85 / 116 2,200	528 / 1,500	210 (250) / 39.5	
<b>6145 PROFI</b>	6 / 6,728	121 / 165 2,200	107 / 145 2,200	650 / 1,500	210 (250) / 39.5	<b>S-Control™ 8</b> Automated 8-speed Powershift transmission with 24 forward and 24 reverse gears with Powershuttle  Optional: Automated 8-speed Powershift transmission with 48 forward and 48 reverse gears with Powershuttle and creeper gear
<b>4145 PROFI</b>	4 / 4,485	118 / 160 2,200	107 / 145 2,200	650 / 1,500	210 (250) / 39.5	
<b>4135 PROFI</b>	4 / 4,485	114 / 155 2,200	99 / 135 2,200	605 / 1,500	210 (250) / 39.5	
<b>4125 PROFI</b>	4 / 4,485	103 / 140 2,200	92 / 125 2,200	560 / 1,500	210 (250) / 39.5	
<b>4115 PROFI</b>	4 / 4,485	96 / 131 2,200	85 / 116 2,200	528 / 1,500	210 (250) / 39.5	
<b>6145 PROFI CLASSIC</b>	6 / 6,728	121 / 165 2,200	107 / 145 2,200	650 / 1,500	210 (250) / 39.5	<b>S-Control™ 4</b> 4-speed powershift transmission with 16 forward and 16 reverse gears with Powershuttle  Optional: 4-speed powershift transmission with 32 forward and 32 reverse gears with Powershuttle and creeper gear
<b>4145 PROFI CLASSIC</b>	4 / 4,485	118 / 160 2,200	107 / 145 2,200	650 / 1,500	210 (250) / 39.5	
<b>4135 PROFI CLASSIC</b>	4 / 4,485	114 / 155 2,200	99 / 135 2,200	605 / 1,500	210 (250) / 39.5	
<b>4125 PROFI CLASSIC</b>	4 / 4,485	103 / 140 2,200	92 / 125 2,200	560 / 1,500	210 (250) / 39.5	
<b>4115 PROFI CLASSIC</b>	4 / 4,485	96 / 131 2,200	85 / 116 2,200	528 / 1,500	210 (250) / 39.5	
<b>4120 MULTI</b>	4 / 3,400	—	86 / 117 2,200	491 / 1,500	150 (-) / 14	Automated 4-speed powershift transmission with 32 forward and 32 reverse gears with Powershuttle, 40 km/h Economy at 1,750 rpm
<b>4110 MULTI</b>	4 / 3,400	—	79 / 107 2,200	468 / 1,500	150 (-) / 14	
<b>4100 MULTI</b>	4 / 3,400	—	73 / 99 2,200	430 / 1,500	150 (-) / 14	
<b>4115 KOMPAKT</b>	4 / 3,400	—	84 / 114 2,300	457 / 1,500	115 (-) / -	Synchronmesh transmission with 12 forward and 12 reverse gears with Synchroshuttle 40 km/h  Optional: Synchronmesh transmission with 12 forward and 12 reverse gears with Powershuttle 40 km/h or Synchronmesh transmission with 20 forward and 20 reverse gears with Synchroshuttle 40 km/h  Automated 2-speed powershift transmission with 24 forward and 24 reverse gears with Powershuttle, 40 km/h Economy at 1,750 rpm 2-speed powershift transmission with 40 forward and 40 reverse gears with Powershuttle and creeper gear  Synchronmesh transmission with mechan. Split shift with 24 forward and 24 reverse gears with reversing shift or with Powershuttle
<b>4105 KOMPAKT</b>	4 / 3,400	—	79 / 107 2,300	444 / 1,500	115 (-) / -	
<b>4095 KOMPAKT</b>	4 / 3,400	—	73 / 99 2,300	407 / 1,500	115 (-) / -	
<b>4085 KOMPAKT</b>	4 / 3,400	—	63 / 86 2,300	351 / 1,500	115 (-) / -	
<b>4075 KOMPAKT</b>	4 / 3,400	—	55 / 75 2,300	309 / 1,500	115 (-) / -	
<b>4065 COMPACT S</b>	4 / 3,400	—	48 / 65 2,300	275 / 1,500	90 (-) / -	
<b>4055 KOMPACT S</b>	4 / 3,400	—	43 / 58 2,300	244 / 1,500	90 (-) / -	

— not available



PTO		HYDRAULICS		WEIGHT	TYRES <sup>*, 3)</sup>
Rear PTO speed [rpm]	Front PTO speed* [rpm]	Max. lifting capacity Rear hitch [kg]	Max. lifting capacity front hitch [kg]	Min. weight [kg]* / permitted GVW [kg]	
540/540E/1,000/1,000E	1,000/1,000E	11,058	5,821	10,500 / 16,800	<b>Municipal tyres:</b> NOKIAN TRI 2 front: 540/65 R30 / rear: 650/65 R42 <b>Forestry tyres:</b> NOKIAN FOREST KING T front: 540/70 - 30 / rear: 650/75 - 38
540E/1.0000 or 1,000/1,000E or 540/540E/1,000/1,000E	1,000	10,463	3,785	6,950 / 13,000	<b>Municipal tyres:</b> NOKIAN TRI 2 front: 440/80 R28 rear: 540/80 R38  Optional: NOKIAN TRI front: 540/65 R30 rear: 650/65 R42 <b>Forestry tyres:</b> NOKIAN FR FOREST MULTIPLUS front: 540/65 R28 rear: 650/65 R38
				6,950 / 13,000	
				6,950 / 13,000	
				6,950 / 13,000	
540/540E/1,000 or 540E/1.000/1.000E	1,000	8,257	3,568	6,480 / 11,500	<b>Forestry tyres:</b> NOKIAN FR FOREST MULTIPLUS front: 540/65 R28 rear: 650/65 R38
				6,480 / 11,500	
				6,480 / 11,500	
540/540E/1,000 or 540E/1.000/1.000E	1,000	7,864	3,100	5,020 / 10,500	<b>Municipal tyres:</b> NOKIAN TRI 2 front: 400/80 R28 rear: 480/80 R38 <b>Forestry tyres:</b> NOKIAN FOREST MULTIPLUS front: 500/65 R28 rear: 600/65 R38
				4,890 / 10,500	
				4,890 / 10,500	
				4,890 / 10,500	
540/540E/1,000 or 540E/1.000/1.000E	1,000	7,864	3,100	5,020 / 10,500	<b>Municipal tyres:</b> NOKIAN TRI 2 front: 400/80 R28 rear: 480/80 R38 <b>Forestry tyres:</b> NOKIAN FOREST MULTIPLUS front: 500/65 R28 rear: 600/65 R38
				4,890 / 10,500	
				4,890 / 10,500	
				4,890 / 10,500	
540/540E/1,000 or 540E/1.000/1.000E	1,000	7,115 / 7,864	2,800 / 3,100	5,020 / 9,500	<b>Municipal tyres:</b> NOKIAN TRI 2 front: 400/80 R28 rear: 480/80 R38 <b>Forestry tyres:</b> NOKIAN FOREST MULTIPLUS front: 500/65 R28 rear: 600/65 R38
				4,890 / 9,500	
				4,890 / 9,500	
				4,890 / 9,500	
540/540E/1,000/1,000E	1,000	5,555	1,985	4,500 / 8,000	<b>Municipal tyres:</b> NOKIAN TRI 2 front: 400/80 R24 rear: 480/80 R34 <b>Forestry tyres:</b> NOKIAN FOREST MULTIPLUS front: 500/65 R24 rear: 600/65 R34
				4,500 / 8,000	
				4,500 / 8,000	
540 or 540/540E or 540/1,000 or 540E/1,000	1,000	3,700	1,670	3,600 / 6,000	<b>Municipal tyres:</b> NOKIAN TRI 2 front: 360/80 R20 rear: 440/80 R30 <b>Lawn tyres:</b> TRELLEBORG T404 front: 400/55-22,5 rear: 600/55-26,5
				3,600 / 6,000	
				3,600 / 6,000	
				3,600 / 6,000	
				3,600 / 6,000	
540 or 540/540E	-	2,500	-	2,280 / 4,500	<b>Municipal tyres:</b> ALLIANCE 550 front: 360/80 R20 / rear: 440/80 R30 <b>Lawn tyres:</b> TRELLEBORG T404 front: 400/55-22,5 / rear: 600/55-26,5
				2,280 / 4,500	

\* depending on country-specific regulations and specifications <sup>1)</sup> ECE R120 complies with ISO 14396 and 97/68EC <sup>2)</sup> Power Plus is available on the basis of defined prerequisites for transport operations and PTO operations

<sup>3)</sup> Other tyres available as cost options on request

# SUSTAINABILITY COMES FIRST

Our tractors meet the highest demands both of our customers and our environment. Conveniently, this goes hand in hand, because not only do our efficient solutions save time and fuel, they also deliver top marks in terms of sustainability. This is demonstrated by the fact that our Group, CNH Industrial, has already topped the Dow Jones Sustainability Index seven times.



## SUSTAINABLE MANUFACTURING

For us, sustainability starts with manufacturing. Our CNH Industrial group covers 56% of its electricity needs from renewable energy sources and recycles over 90% of the resulting waste and about 30% of the wastewater directly on site.



## PROFESSIONAL KNOWLEDGE

Our most valuable resource is our employees. Values like security at the workplace, and careful education and training, are therefore very important to us.





### **EFFICIENT TECHNOLOGIES**

With S-TECH, our precision agricultural technology, as we increase productivity and comfort in our tractors, we reduce emissions to a minimum.



### **SUSTAINABLE CONCEPTS**

When developing our tractors, we pay special attention to environmentally friendly technologies in order to minimize fuel and energy consumption.

a partner company of

**STEYR**  
TRAKTOREN

**steyr-traktoren.com**  
**facebook.com/steyrtraktoren**

We want you to be safe. Before using this vehicle, please read the Operating Manual to become familiar with using each control. Note the contents of the instruction panels and use the safety equipment for your own personal safety. This brochure is intended for international distribution. The availability of certain models, standards and special equipment items may vary from country to country. STEYR reserves the right to make changes to the design and technical version without notice and without obliging STEYR to transfer any such updates to units already sold.

Details, descriptions and pictorial material reflect the current status at the date of publication. This can be amended without prior notice. Pictorial materials may show certain national versions, items of special equipment or incomplete standard versions.

SM / 04.18 / Printed in Austria – Cod. n. 18S8001COMING – [www.STEYR-traktoren.com](http://www.STEYR-traktoren.com)

