



NEW RELEASE 4000VT GRAIN ANALYSER

Integrates with MY23 and future New Holland Combines.



The Tech

- Near Infrared Transmission Technology; the world standard for measuring whole grains and oil seeds.
- Real-time measurement of protein moisture, oil, fibre and starch for all major crop types.
- New NIR ECU running via ISOBUS software in the existing cab Virtual Terminal display.
- New Sample Head provides 3-4 second scan speed for high density field maps.



INDUSTRY LEADING SOLUTION

NUTRITION



Increase yields by optimising nutrient management with protein and yield maps.

EFFICIENCY



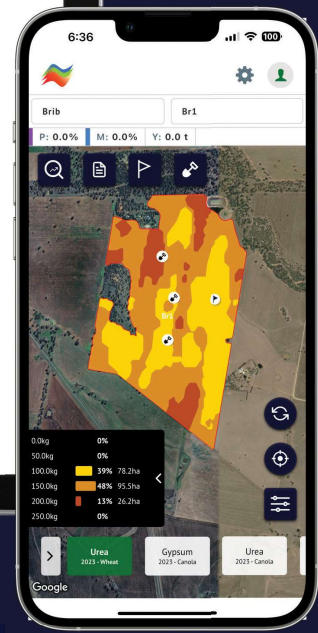
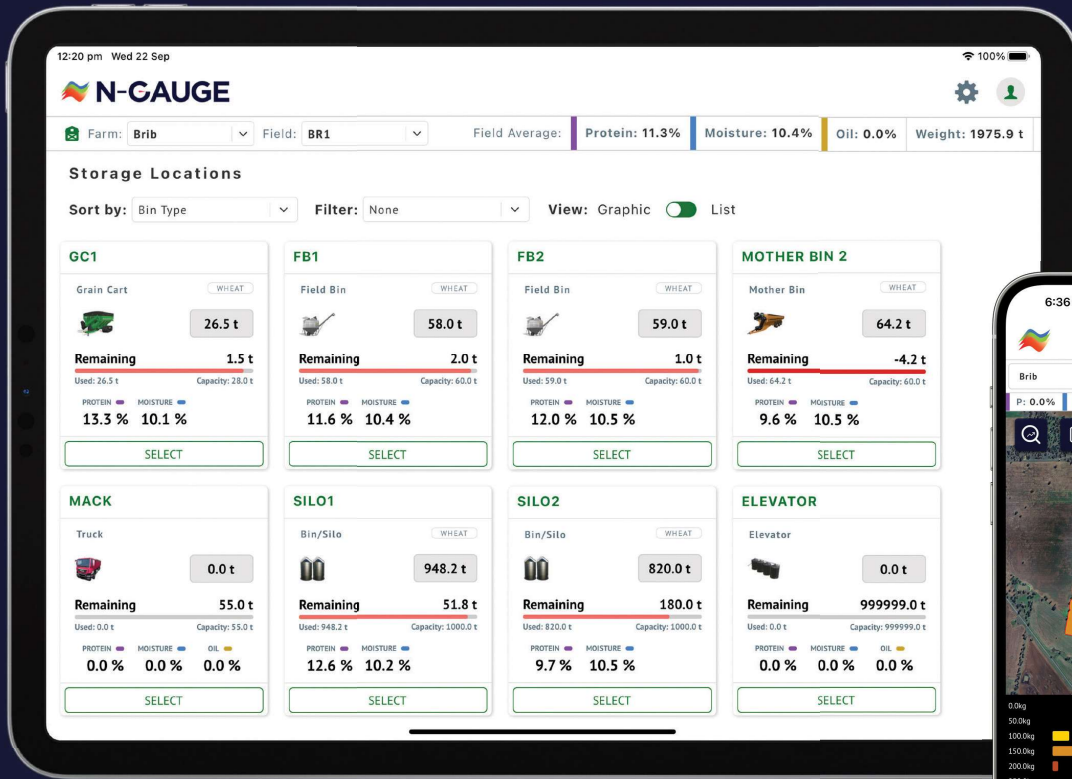
Save time and resources with streamlined data collection and analysis.

SUSTAINABILITY



Maximise nitrogen efficiency and ensure your fertiliser is where you need it.

PART NUMBER	DESCRIPTION
CSC4H4000-1NH	CROPSCAN 4000VT ON COMBINE GRAIN ANALYSER NEW HOLLAND KIT



HARVEST MANAGER

5 Year Subscription included

- Digital grain storage management.
- Track and manage every tank load of grain from the field to delivery.
- Segregate and blend grain based on quality attributes.
- View protein, oil, moisture and yield maps.

NUTRIENT MANAGER

(Optional Annual Subscription
Part Number: CSCAS001)

- From app to map: simplifying the protein to prescription strategy.
- Generate variable rate prescription maps from harvest data.
- Reports and built-in analytics for field performance and nutrient removal.
- Create and send Rx prescriptions to your machinery platform.

**For all New Holland Combines before MY23
opt for a CropScan 3300H Grain Analyser.**