

ML50 T

TELESCOPIC REACH SMALL ARTICULATED LOADER



OPERATING WEIGHT	
Open cab	11,464 lb (5200 kg)

OVERALL DIMENSIONS	
Overall height	99.3 in (2523 mm)
Overall length:	
Without bucket	209.1 in (5310 mm)
Machine width	57.5 in (1460 mm)

LOADER PERFORMANCE SPECS	
Lifting height	171.3 in (4350 mm)
Tipping load (ISO) – Straight	See graph page 2
Lifting capacity	See graph page 2

ELECTRICAL	
System voltage	12 volts
Alternator	60 amp
Battery	120 AHR 1,000 cold-cranking amps

ENGINE	
Model	Kubota V3307 CR
Emissions certification	Tier 4 Final/Stage V
Cylinders	4
Displacement	203.3 in3 (3.331 L)
Fuel	Diesel
Exhaust aftertreatment	DOC + DPF
Engine speeds	RPM
Rated – full load	2,600
Horsepower @ 2,600 RPM – SAE J1349:	
Gross	74 hp (55.4 kW)
Peak torque @ 1,500 RPM	195.4 lb-ft (265.0 N-m)

DRIVETRAIN	
Transmission type	Hydrostatic, 2+2 speed
Differential type	Open Center w/ Differential Lock
Parking brake:	
Type	Hydraulic multidisc SAHR
Max. travel speed	
Turtle – Low Gear	4.2 mph (6.7 kph)
Rabbit – Low Gear	18.6 mph (30 kph)
Turtle – High Gear	8.1 mph (13.1 kph)
Rabbit – High Gear	21.6 mph (34.7 kph)

HYDRAULICS	
Control valve type	Open center
Pump type	Fixed gear
Driving hydraulics:	
Flow rate	38.3 gpm (145 L/min)
Operating pressure	7,000 psi (480 bar)
Working Hydraulics:	
Total flow rate	20.6 gpm (78 L/min)
Operating pressure	3,600 psi (250 bar)
Auxiliary 1:	
Max. flow rate	20.6 gpm (78 L/min)
Pressure	3,600 psi (250 bar)
Auxiliary 2 — optional:	
Max. flow rate	20.6 gpm (78 L/min)
Pressure	3,600 psi (250 bar)
Continuous flow — optional:	
Max. flow rate	35.7 gpm (135 L/min)
Pressure	3,600 psi (250 bar)

SERVICE CAPACITIES	
Fuel tank	20.3 gal (77 L)
Engine oil w/ filter	11.9 qt (11.3 L)
Hydraulic system	21.1 gal (80 L)
Engine coolant	3.3 gal (12.35 L)

Standard Equipment

Operator Environment

- ROPS/FOPS safety roof
- Safety entry bar
- Key start
- Air suspension vinyl seat
- Armrests
- Retractable seat belt
- Exterior mirrors

Engine

- Diesel oxygen catalyst
- Diesel particulate filter
- Glow plug starting aid
- Engine block heater
- Locking fuel cap
- Cyclone air filter

Drivetrain

- Hydrostatic 4-wheel drive
- FNR control on joystick
- Electrical differential lock axles
- Multidisc brake SAHR

Hydraulics

- 3-spool main control valve
- 1x dual acting auxiliary hydraulics
- Attachment case drain return
- Hydraulic self-level function
- Hose rupture protection on lift cylinder
- Oil cooler

Loader

- Telescopic reach loader arm
- Loader lift arm support strut
- SSL compatible attachment coupler, hydraulic powered
- Additional counterweights

Electrical

- 12 volt system
- 120 AHR, 1,000 CCA battery
- 60 A alternator
- 1 boom worklight
- 2 front cab work lights
- 2 rear cab work lights
- Anti-theft protection with access code
- Battery disconnect switch

Other Standard Features

- Recovery Hook
- Backup alarm
- Horn
- Fleet Force Telematics with 5-Year Advanced Connectivity

Warranty

- Base warranty coverage: 2-Year/1,000-Hour Full Machine Limited Warranty

Optional Equipment

Operator Environment

- Enclosed cab with HVAC

Engine

- Hand throttle

Drivetrain

- Pro inching creep control
- Oscillation lock-out

Hydraulics

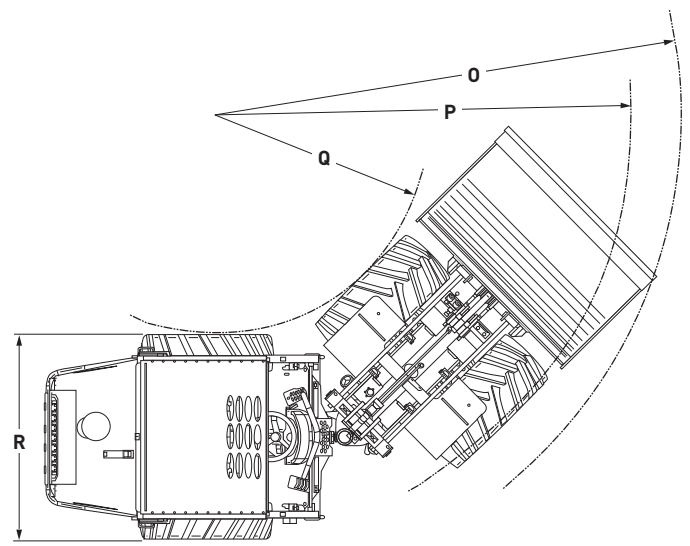
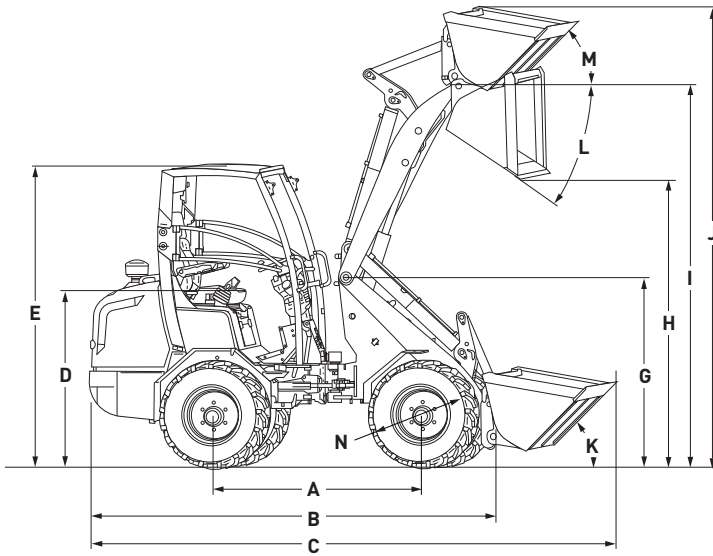
- 2x dual acting auxiliary hydraulics
- Auxiliary hydraulics detent hold function
- High flow auxiliary hydraulics
- Hydraulic boom suspension (ride control)

Electrical

- Road Lights / Turn Signals
- 2 Boom Work Lights
- 14-pin electrical auxiliary connection
- Rotating beacon light
- Strobe light

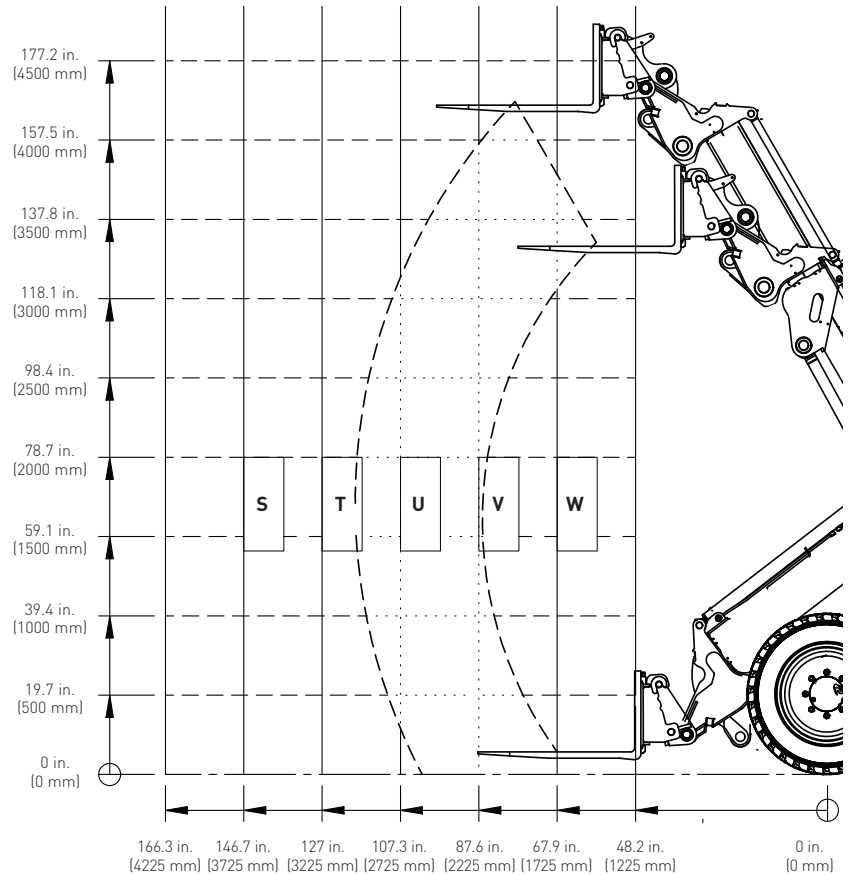
Other

- English, Spanish, or French operator manual



DIMENSIONS

A	Wheelbase	80.5 in (2044 mm)
B	Total length	175.4 in (4454 mm)
C	Length with bucket	209.1 in (5310 mm)
D	Seat height	63.0 in (1600 mm)
E	Max. height with safety roof	99.3 in (2523 mm)
F	Max. height with cabin	99.3 in (2523 mm)
G	Height front frame	75.0 in (1906 mm)
H	Max. dumping height	133.9 in (3400 mm)
I	Lifting height	171.3 in (4350 mm)
J	Height with bucket	200.8 in (5100 mm)
K	Rollback angle on the ground	41°
L	Max. dumping angle	41°
M	Max. loading angle	29°
N	Outer size of tires	41.3 in (1050 mm)
O	Maximum radius external	147.2 in (3738 mm)
P	Turning radius on outer edge	125.6 in (3190 mm)
Q	Inner turning radius	68.7 in (1745 mm)
R	Width on standard tires	57.5 in (1460 mm)



Line drawings are for illustrative purpose only and may not be exact representation of unit.

TIPPING LOAD PATHS

S	2,780 lb (1260 kg)
T	3,240 lb (1470 kg)
U	3,940 lb (1785 kg)
V	4,820 lb (2185 kg)
W	6,170 lb (2800 kg)



New Holland Construction
500 Diller Ave.
New Holland, PA 17557

Learn more at www.newholland.com



Design, materials and/or specifications are subject to change without notice and without liability therefor. Specifications are applicable to units sold in Canada, the United States, its territories and possessions, and may vary outside these areas.

© 2023 CNH Industrial America LLC. All rights reserved. New Holland is a trademark registered in the United States and many other countries, owned by or licensed to CNH Industrial N.V., its subsidiaries or affiliates. Any trademarks referred to herein, in association with goods and/or services of companies, other than owned by or licensed to CNH Industrial N.V., its subsidiaries or affiliates, are the property of those respective companies.



Safety begins with a thorough understanding of the equipment. Always make sure you and your operators read the Operator's Manual before using the equipment. Pay close attention to all safety and operating decals and never operate machinery without all shields, protective devices and structures in place.