

# RB344 FIXED CHAMBER

**BALER**  
ROTOR CUTTER  
AND ROTOR FEEDER

#RED   
BALING



**CASE IH**





# BALING MADE SIMPLE

Outstandingly quick and incredibly easy

At Case IH, our job is to keep you productive at your job, and that's never more true than during the harvest. When it comes to baling, you need reliability first and foremost.

Our remarkably robust fixed chamber round baler series is simple and effective, including everything you need, and nothing you don't.



### SMART DESIGN

Efficiently engineered throughout for high density bales even under the most challenging crop conditions. Bale when you want without waiting.



### RELIABLE AND ROBUST

High wear resistance and easy maintenance make RB344 balers sturdy and uncomplicated. Your baler is ready to go when you need it.



### EASY TO HANDLE

Simple, intuitive operator terminal make the machine easy to control from the cab. Save time on long days.

OVERVIEW .....	4 – 5
PICK-UP .....	6 – 7
FEEDING .....	8 – 9
WRAPPING .....	10 – 11
CONTROLS .....	12 – 13
SERVICE AND MAINTENANCE .....	14 – 15
SERVICE TEAM .....	16
CAPITAL .....	17
SUSTAINABILITY .....	18
SPECIFICATIONS .....	19



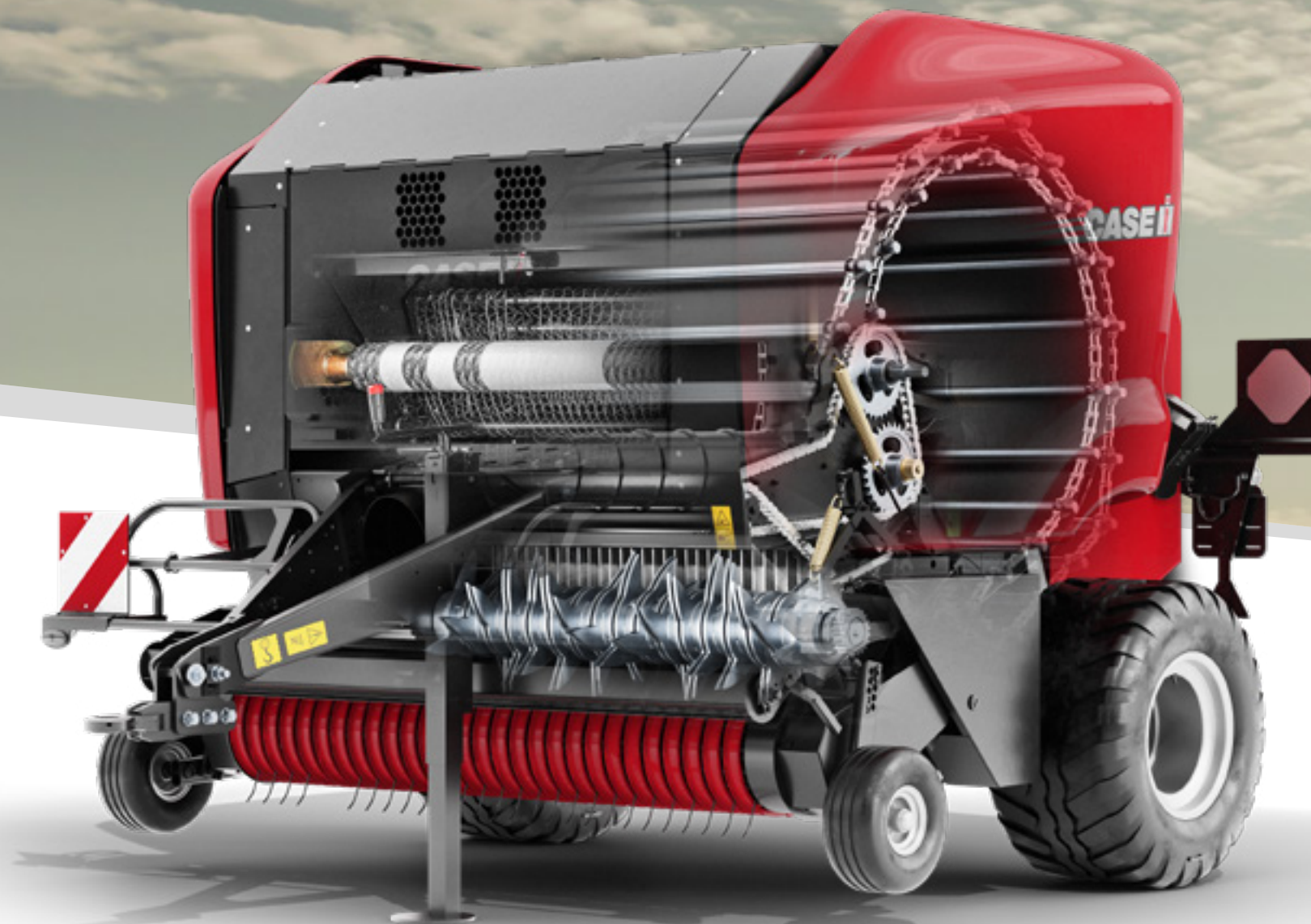


# THE RB344 RANGE

Simply reliable

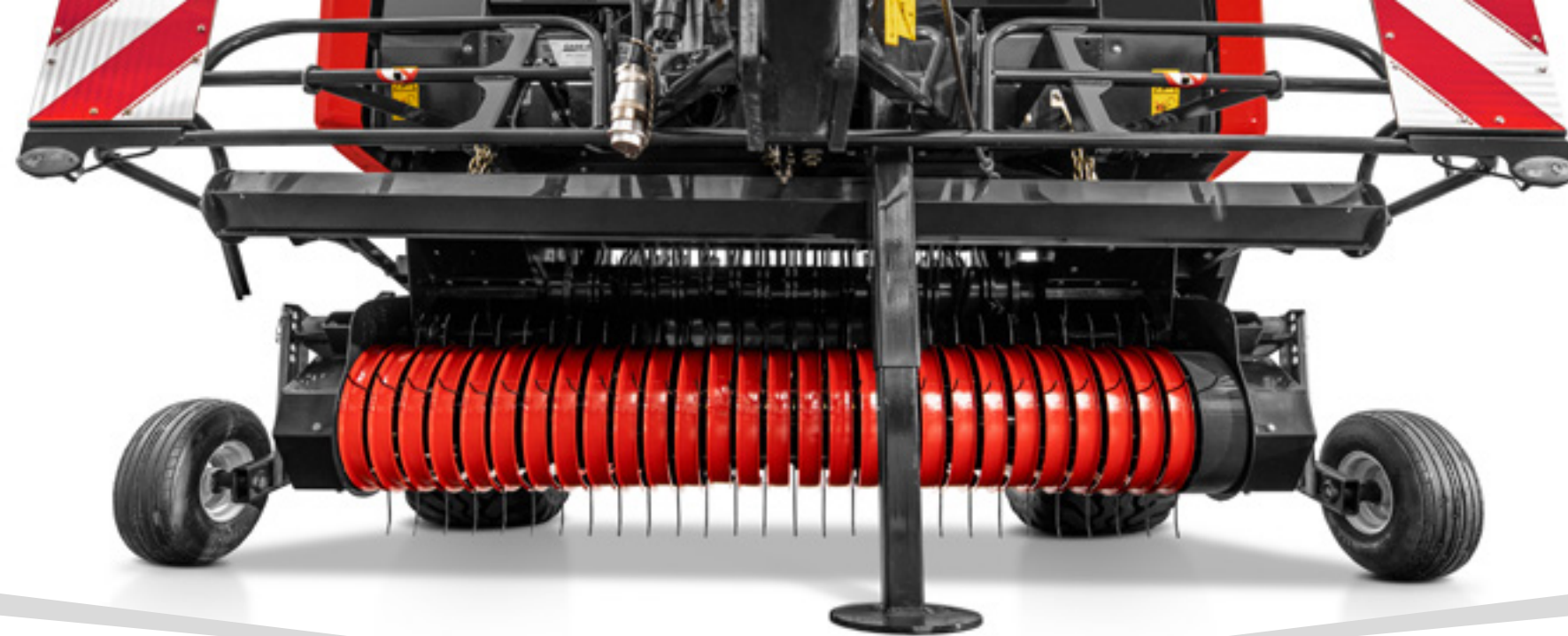
The RB344 fixed chamber concept has received a new modern style with practical details for faster maintenance. You'll get the robust simplicity you're used to from the Case IH RB344 baler, and enjoy newly-improved drivelines and a hydraulic rotor reverser to make your work less complicated. Keep it simple with this robust workhorse.

MODELS	Bale diameter (cm)	Bale width (cm)	Knife selection	Minimum PTO power (hp)
RB344 ROTOR FEEDER	125	120	-	55
RB344 ROTOR CUTTER	125	120	15 / 8 / 7 / 0	70



- 1 IDEAL BALE FORMATION**
  - Secured bale start under all crop conditions
  - Duckbill net feeding system always provides a perfect bale shape with covered edges
- 2 EASE OF OPERATION**
  - Electronic bale management system gives you total control and includes an on-board diagnosis
  - Hydraulic rotor reverser clears clogs without leaving the cab
- 3 HIGH-CAPACITY CROP FLOW**
  - Cam pick-up provides smooth, high-capacity feeding with a low losses
  - Wide, high capacity rotary feeder/cutter for high quality bales with compact, firm edges
  - Rotor cutter system for superior cutting quality whatever length of cut is required
- 4 FULLY WRAPPED FROM EDGE TO EDGE**
  - Electronically controlled net or twine generates tight, sturdy bales of excellent quality
- 5 SIMPLE AND ROBUST DESIGN**
  - All rotating elements are positively driven via heavy duty chains to maximize durability
  - Durable slat-chain bale chamber design for high bale count and a long service life
- 6 EASY ON FIELDS**
  - Large flotation tyres help reduce soil compaction, especially during headland turns in wet conditions





# MAXIMISE CAPACITY BY PREVENTING LOSSES

Nothing is lost or wasted

Everything starts where the baler meets the crop. The RB3 series' efficient and gentle pick-up can handle any kind of crop, from long straw up to short autumn silage or crops with fragile leaves.

- 2 m working width
- 1.8 m tine to tine
- 2 choices: plate or roller windguard

## WIDE PICK-UP FOR WIDE SWATHS

RB344 models are equipped with a generous 2.0 m width pick-up to gently yet easily handle heavy swaths. To keep productivity high, the pick-up can be raised and lowered hydraulically from the driver's seat, adjusting working height for best ground tracking.

## 4 TINE BARS FOR EXCELLENT FORAGE PICK-UP

The pick-up is equipped with 4 tine bars with 112 closely spaced, curved steel tines to make sure all of the crop is collected from the windrow under any condition.

## SIDE AUGERS OPTIMISE CROP FLOW

Two short side augers improve crop flow and reduce the risk of blockages, especially in wide swaths. Bales turn out particularly firm around the edges so they will hold up to handling during transport and storage.

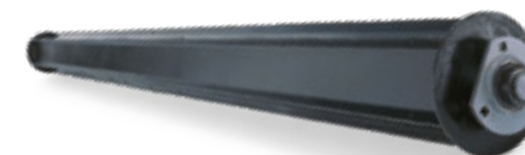
## ADVANTAGES

- High throughput in heavy swaths
- No crop losses
- Even filling of the bale for more uniform density
- Spring mounted knives prevent damage to the driveline

## ROLLER OR PLATE-TYPE WINDGUARD

You have the choice: the fully-pivoting standard plate windguard with single height adjustment chain or the front-mounted crop roller windguard (optional). Whichever you choose, the incoming crop is compressed and throughput sped up, ensuring active feeding of the crop to the rotor.

FORWARD MOUNTED CROP ROLLER ENSURES UNIFORM FILLING OF THE BALE CHAMBER



## A CLEAR VIEW OF THE SWATH

Operators have an excellent view across the entire width of the pick-up. When you can see what you're picking up, your losses go down and your bales are better shaped.

## LESS RISK OF SOIL DAMAGE

RB344 balers are fitted with large flotation tyres for optimized ground-contour following. You don't have to worry about soil compaction, even at high speed or during headland turns.



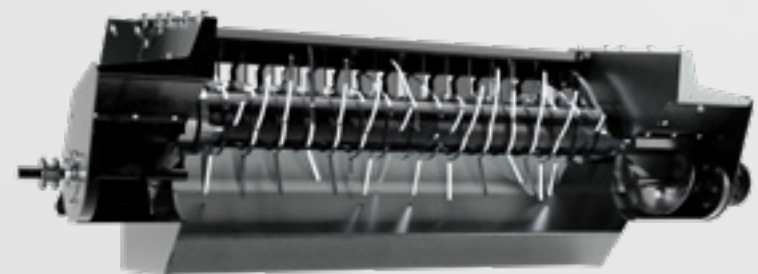
# TWO FEEDER TYPES TO SUIT YOUR NEEDS

## ROTOR FEEDER

### MAXIMUM INTAKE

The rotor feeder is the first choice for fragile crops to minimize damage and crop losses. Equipped with a 140 cm wide rotor turning at 138 rpm, the rotor feeder provides excellent feeding and nice bale shape/weight in all swath conditions.

- Ideal for dry crops
- Gentle feeding for fragile crops



## ROTOR CUTTER

### TOP QUALITY FORAGE

The rotor cutter's 15 knives maximise cutting performance and thus the quality of the crop. When baling silage, the higher compaction means less air in the bale for optimum fermentation, resulting in best fodder quality for high milk production.

- Versatile solution (dry or silage crops)
- Higher compaction for better fodder quality



### FULL FLEXIBILITY WITH THE ROTOR CUTTER KNIFE BAR

The 1.4 m wide rotor cutter features an electric knife group selection allowing easy switching between 15, 8, 7 or 0 knives in operation. Choose your preferred cutting length to suit your needs.



## EFFICIENT BALE CHAMBER FILLING

### MAXIMUM CROP FLOW

RB344 balers are fitted with rotary feeders to match capacity requirements, so the crop is delivered to the bale chamber floor in one smooth, continuous flow.

### WIDE FEEDER FOR EXCELLENT BALE SHAPE

The RB3 series feeder is wider than the bale chamber, resulting in progressive filling of the bale ends. This ensures your bales are well-shaped with straight corners every time.

### UNBLOCKING FEATURE FOR SHORTER DOWNTIMES

A manual feeder reversing system is fitted to both models to quickly clear any blockages. Or, opt for a hydraulic feeder reversing kit and clear blockages without leaving your seat.





# NET, TWINE OR FILM – YOU CHOOSE

Reliable binding without compromises

**WHETHER TWINE OR NET, YOU'LL BE SURE TO GET WELL-WRAPPED BALES TIME AFTER TIME. THE RB3 SERIES' PROVEN NET WRAPPING SYSTEM WORKS UNDER ANY CONDITIONS AND QUICKLY TOO: THE WRAPPING PROCESS IS FULLY AUTOMATIC AND TAKES ONLY A FEW SECONDS.**

- Net wrapping system as standard (film optional)
- Three rolls of net storage (one active and two stored)
- Optional twine wrapping system (up to six twine balls storage)
- Automatic wrapping for maximum productivity
- Over the edge wrapping system reduces logistic costs

## **STRAIGHTFORWARD WRAPPING**

RB344 models feature a net wrapping system as standard, which ensures the bales are formed and wrapped right to their edges for optimal storage and nutritional value.

## **INCREASED BALE PROTECTION**

For straw bales stored outside, the RB344 models can work with full width plastic film. For silage baling, the additional plastic layers protect the crop and can help improve silage quality.

## **SECURE NET START EVERY TIME**

The wrapping process gets off to a positive start thanks to the unique duckbill assembly. This simple yet clever system takes net, twine or plastic and introduces it into the bale chamber. The wrapping material is then guided onto the bale surface and pulled around the finished bale as it rotates. This fully automated system ensures well wrapped bales time after time.





# FULL CONTROL FROM YOUR CAB SEAT

## NEW DELUXE MONITOR

The backlit LCD monitor gives you the full picture at a glance, showing main baler functions and controlling major settings.

Baler settings are easy to change with intuitive menus and a soft-touch keypad.

Essential set-up and operating data are at your fingertips:

- Bale production per nominated period (per day/field etc),
- Number of bales chopped/unchopped
- Number of bales wrapped with net or twine,
- Self-diagnostic system

**With an intuitive interface, new drivers can quickly become master operators.**



**YOU CAN STORE  
20 MEMORY PAGES,  
FOR BETTER DATA  
MANAGEMENT.**

### **AUTOMATIC OPERATION**

As soon as the desired bale size is reached, the bale is automatically wrapped ready for the operator to eject. It's simple, fast and very efficient.

### **PRECISION WRAP CONTROL**

The 'wrap' key lets you apply a precise amount of netting to the bale - between 1.5 and 6 rotations. This will ensure that the bale is perfectly presented and wrapped from edge to edge.

### **SELF-DIAGNOSTIC SYSTEM**

Designed to instantly alert the operator should any malfunction occur in the system during the baling process. You can make adjustments on the move and be fully informed of any issues.



# ROBUST BUILD, EASY MAINTENANCE

Start your baling season right

## AUTOMATIC CHAIN LUBRICATION

The drive chains of the RB344 are automatically tensioned and lubricated for a longer service life with minimal wear. The amount of oil applied is automatically adjusted to requirements.

- Increased chain life and reliability
- Further reduction of daily maintenance
- Reduced power consumption

## LARGE OIL RESERVOIR

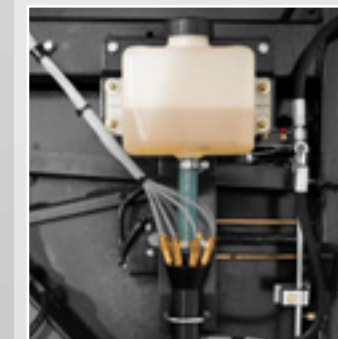
The large capacity of the 1,9l oil tank keeps you going even through long working days.

## ROBUST DRIVELINE

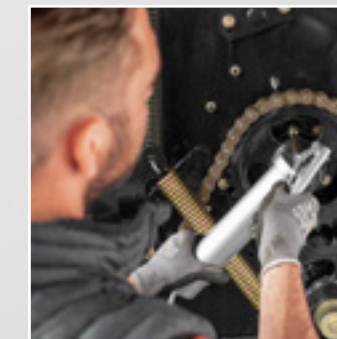
Thanks to its simple driveline, RB344 models require less maintenance. Everything from the the drive chains, sealed drive bearings and cutting system, to the knives and knife guards, is designed for the toughest conditions and heaviest loads.

## EASY COUPLING

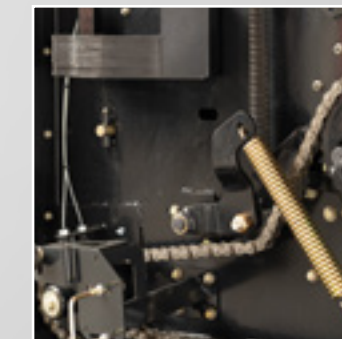
The requirement of only two single acting and one double acting (hydraulic reverser optional) remote valves makes connecting up the hydraulic lines very straightforward. All hydraulic lines are color coded for easy and safe coupling.



The automatic lubrication system reduces daily maintenance to a minimum.



Lubricating nipples are easily accessible from the right side of the machine at standing height.



With spring tensioners, all chains maintain optimum tension, resulting in increased chain life.





# SERVICE TEAM

Be a farmer, we take care of the rest

The Case IH SERVICE TEAM, a strong dealer network backed up by local Case IH market teams, industry-leading Case IH support tools, modern training methods, best-in-class spare parts support and logistics performance: These provide Case IH customers with excellent all-encompassing after-sales service, keeping you farming!

## GENUINE PARTS WE KEEP YOUR EQUIPMENT RUNNING.

Your local Case IH dealer and our dedicated 24/7 parts call centre technicians and their logistics colleagues are all part of the Case IH ServiceTeam network. They're highly trained to give you expert advice and solve problems, ensuring the correct, genuine Case IH parts are located and dispatched right away, reaching you next day or sooner to keep your machine in top condition.

## MAXSERVICE AROUND THE CLOCK. AROUND THE COUNTRY.

When you're working around the clock, MaxService ensures you're never alone. It's a dedicated helpline that connects you to the Case IH ServiceTeam 24/7. Call technicians at your local dealer are ready to assist with technical advice, software solutions and genuine parts ordering. At peak season, we can keep you farming with breakdown assistance.

## SAFEGUARD WARRANTY SAFEGUARD THREE-YEAR WARRANTY

The best things come in threes: Our extremely high quality standards and continual improvements to our products have allowed us to offer a 3-year factory warranty. The warranty covers all necessary repairs in years 2 and 3 to the extent of the base warranty. Labour and Case IH original parts are covered for every warranty repair without any unexpected cost to you. Terms and conditions apply, call your local Case IH dealer for details!



## OPTIMAL FINANCING SOLUTION FOR EVERY INVESTMENT

CNH Industrial Capital is the financing company for Case IH. Our employees are financial experts and have many years of experience in agriculture. We not only know about Case IH products and the market – we also understand the individual requirements of your operations.

Therefore, we are always able to offer you a financial solution for your new investments that is tailored specifically to your operational requirements. Our most important goal is improving the profitability of your investments!



# SUSTAINABILITY

Case IH is part of CNH Industrial, one of the world's largest capital goods companies. It has a firm focus on its environmental responsibilities, and has been a eleven-time leader in the Dow Jones Sustainability Index.

Within the CNH Industrial group:

- 93.3% of waste is recovered
- 50% of water used is recycled and
- 72% of electricity used is from renewable sources.

Being a global leader in capital goods carries great responsibilities, which means that we must be accountable for every global activity we perform. Our responsibility does not stop at the factory gate, and we have made great efforts to be proactive when it comes to the broader global issues surrounding sustainability. Over the years, our work in research and development has been geared towards ensuring that our products continue to achieve increasingly high standards in terms of safety and eco-compatibility. Rather than limiting customers to a choice between low operating costs and eco-efficiency, our strategy is to offer products that deliver both.

At Case IH, our engineers are focused on producing machines that not only work on the land, but work with it too.



**REDUCE THE CONSUMPTION OF RESOURCES BY MOVING FROM FOSSIL FUELS TO A RENEWABLE ENERGY SYSTEM**



**INCREASE AGRICULTURAL PRODUCTIVITY TO IMPROVE FOOD AVAILABILITY**



**REDUCE ENVIRONMENTAL IMPACT AND OPTIMISE ENERGY CONSUMPTION IN ALL COMPANY PROCESSES**




**INCREASE OPPORTUNITIES FOR EXCHANGING IDEAS AND GOOD PRACTICES WITH ALL STAKEHOLDERS**

MODEL	RB344 ROTOR CUTTER	RB344 ROTOR FEEDER
<b>BALE DIMENSIONS</b>		
Width [cm]	120	120
Diameter [cm]	125	125
<b>TRACTOR REQUIREMENTS</b>		
Minimum PTO power [kW / hp(CV)]	51 / 70	40 / 55
Hydraulic distributors (standard / optional)	2 / 3	2 / 3
<b>PICK-UP</b>		
Width, effective (DIN 11220) [m]	2.0	2.0
Flotation	Adjustable spring	Adjustable spring
Gauge wheels, 15 x 6.00-6	2	2
Roller type windguard	•	•
Plate type windguard	◦	◦
<b>ROTOR CUTTER</b>		
Maximum number of knives	15	-
Knife selector	15 / 8 / 7 / 0	-
Knife distance [mm]	≈ 80	-
Knife activation	Electric	-
Knife protection	Spring	-
<b>FEEDING SYSTEM</b>		
Feeder	Rotor with double tines - rotor width 1.4m	Rotor with single tines - rotor width 1.4m
<b>WRAPPING CONTROL</b>		
Type	Deluxe monitor controlled net - standard	Deluxe monitor controlled net - standard
Wrap type	Net or plastic std.- twine option	Net or plastic std.- twine option
<b>BALE DENSITY CONTROL</b>		
Type	Tension spring controlled	Tension spring controlled
<b>TYRES</b>		
Standard	480 / 45 / 17 - 10ply	480 / 45 / 17 - 10ply
Option	15.0 / 55 x 17 - 10ply	15.0 / 55 x 17 - 10ply
<b>BALER DIMENSIONS</b>		
Total length [mm]	4,050	4,050
Total height [mm]	2,350	2,350
Width, less pick-up wheel [mm]	2,450 (with 15.0 / 55 x 17)	2,450 (with 15.0 / 55 x 17)
Width, with pick-up wheel [mm]	2,690 (with 15.0 / 55 x 17)	2,690 (with 15.0 / 55 x 17)
Weight [kg]	2,775	2,775
<b>OTHER EQUIPMENT</b>		
Twine tie	◦	◦
Performance monitor	•	•
Hydraulic rotor reverser kit	◦	◦





     
[caseih.com](http://caseih.com)

 Free phone: 00 800 22 73 44 00

Safety never hurts! Always read the Operator's Manual before working with any equipment. Inspect equipment before using it, and be sure it is operating properly. Follow the product safety signs, and use any safety features provided. This literature has been published for worldwide circulation. The standard and optional equipment and the availability of individual models may vary from one country to the next. Case IH reserves the right to undertake modifications without prior notice to the design and technical equipment at all times without this resulting in any obligation whatsoever to make such modifications to units already sold. Whilst every effort is made to ensure that the specifications, descriptions and illustrations in this brochure are correct at the time of going to press, these are also subject to change without prior notice. Illustrations may show optional equipment or may not show all standard equipment. Case IH recommends **AKCELA** lubricants.

TP01 / SM / 05.22 / Printed in Austria - Cod.No. 22C3002COMINB

**CASE IH**